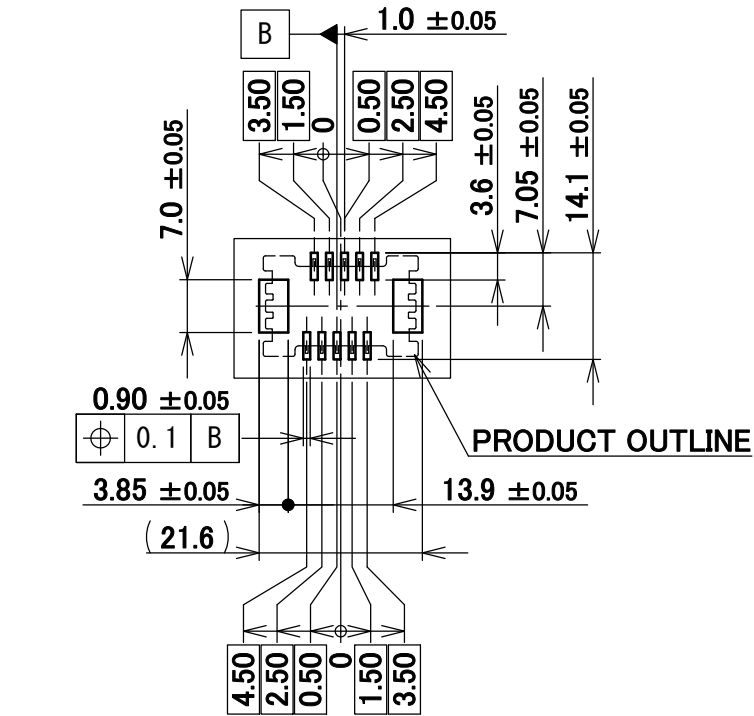
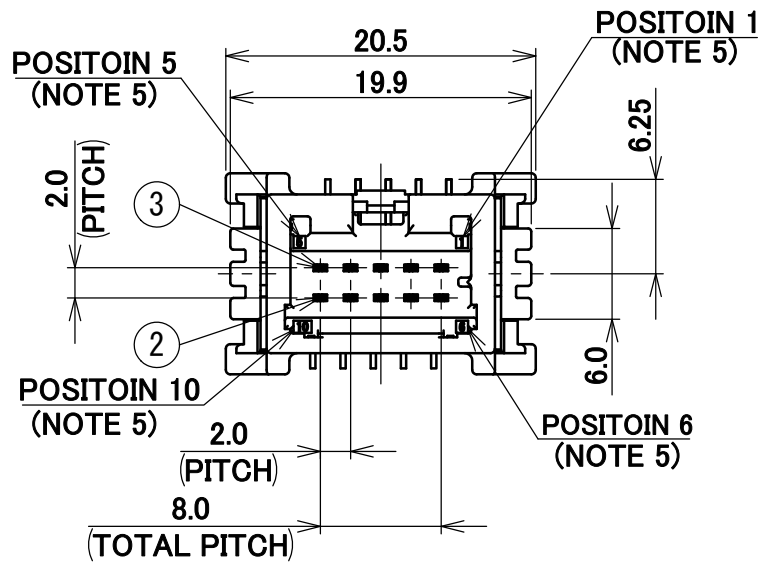
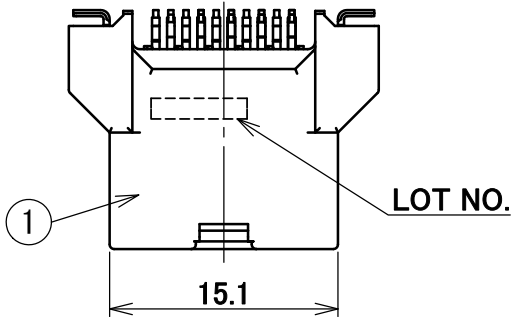
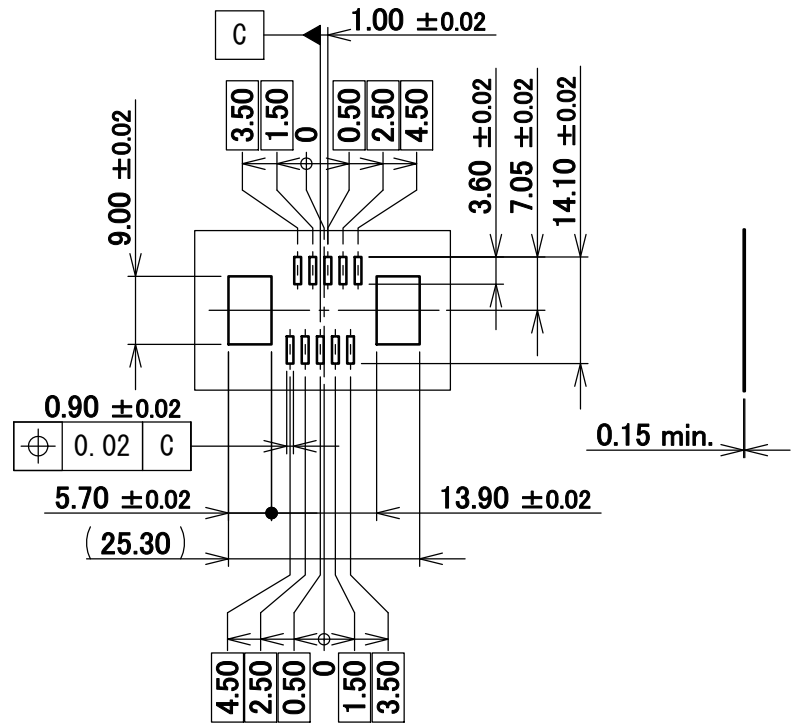
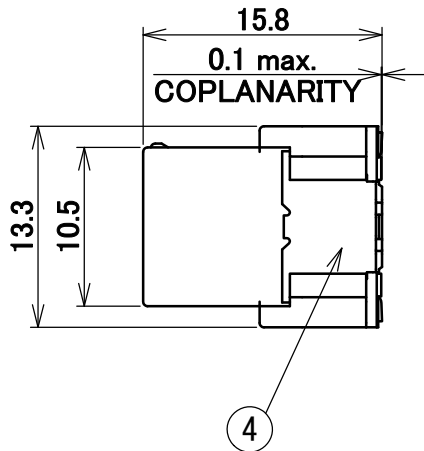


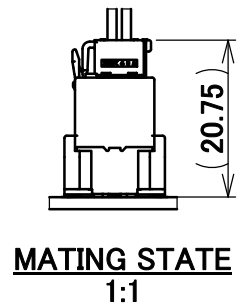
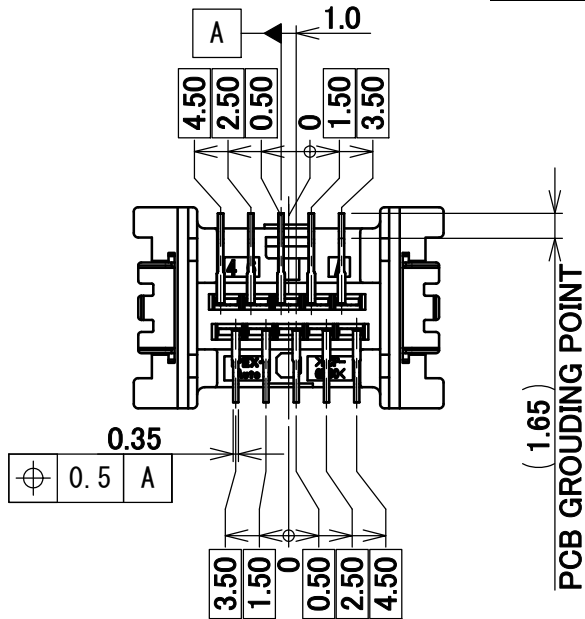
PART NO.	VACUUM CAP
V0019-010E-001	WITH
V0019-010E-002	WITHOUT



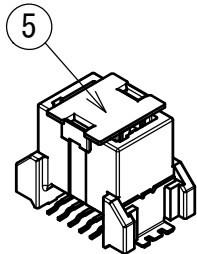
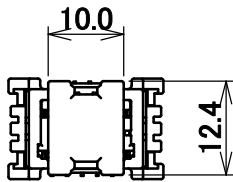
RECOMMENDED FOOTPRINT PATTERN LAYOUT
1:1



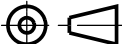
RECOMMENDED METAL MASK LAYOUT
1:1



- NOTES
- 1.APPLICABLE PART NO.:
 - FEMALE HOUSING...V0020-91010-211
 - FEMALE RETAINER...V0020-92010-211
 - FEMALE TERMINAL...VT001-512
 - 2.COMPLY WITH ELV/RoHS.
 - 3.HANDLE OF PRODUCT IN COMPLIANCE WITH HANDLING MANUAL[HDM-0002]
 - 4.USE METAL MASK WHICH HAS A THICKNESS OF 0.15mm MIN. WHEN THE MALE CONNECTOR IS MOUNTED ON THE PCB.
 - 5.POSITION NUMBERS ARE INDICATED.



PART NO:V0019-010E-001

5	VACUUM CAP		GLASS-FILLED LCP		NATURAL			
4	HOLD DOWN		BRASS		Sn REFLOW			
3	MALE TERMINAL-2		BRASS		Sn REFLOW			
2	MALE TERMINAL-1		BRASS		Sn REFLOW			
1	MALE HOUSING		GLASS-FILLED LCP		BLACK / UL94V-0			
NO.	DESCRIPTION		MATERIAL		FINISH/COLOR/REMARKS			
ANGLE	±2°	6 OVER 30 MAX.	±0.3	PROJECTION	SERIES No.	CUSTOMER COPY		
6 MAX.	±0.2	30 OVER 120 MAX.	±0.5		R2			
GENERAL TOLERANCE.	120 OVER	±0.5%	TITLE			SCALE	I-PEX	
DWG.	K. HANAKI	DATE	June/20/' 14	ISH® CONNECTOR 10P	2:1			
CHK.	J. MUKUNOKI	DATE	June/20/' 14	MALE CONNECTOR	UNIT			
	S. YAGI	DATE	June/20/' 14	(VERTICAL TYPE)	mm			
APP.	T. ENDO	June/20/' 14	DWG. No.	CV0019-010	SIZE	SHEET	REV.	
					A3	1/1	5	

5	S2155	H.H	Sep./01/'21	J.T	ANGLE	±2°	6 OVER 30 MAX.	±0.3
4	S1574	D.M	Aug./27/'18	E.K	6 MAX.	±0.2	30 OVER 120 MAX.	±0.5
3	S1552	Y.S	June/25/'18	E.K	GENERAL TOLERANCE.	120 OVER	±0.5%	
2	S1154	S.T	Oct./31/'16	T.E	DWG.	K. HANAKI	DATE	June/20/' 14
1	S0580	K.H	Nov./07/'14	T.E	CHK.	J. MUKUNOKI	DATE	June/20/' 14
0	S0471	K.H	June/20/'14		APP.	S. YAGI	DATE	June/20/' 14
REV.	ECN	BY	DATE	APP.	APP.	T. ENDO	DATE	June/20/' 14
REVISION RECORD								

I-PEX Inc.

CONFIDENTIAL C