

MINIDOCK™ Slim Type Right Angle Plug

Part No. 30046

Packing Standard

6	S24126	May 30, 2024	Y. Kawano	Y. Baba	S. Suzuki
5	S13265	July 3, 2013	Y. Watanabe	K. Narita	T. Takano
4	S12098	April 4, 2012	M. Yoshimura	K. Narita	E. Kawabe
3	S06061	May 7, 2006	J. Ohsaka		T. Harada
Rev.	ECN	Date	Prepared by	Checked by	Approved by

1. Product Name(s) and Part Number(s)

Product Name	Part Numbers
MINIDOCK Slim Type Right Angle Plug	30046-160T-**F 30046-160T-F
Cross recessed head screws M1.6	90061-001
Note: Connectors with screws only	

2. Packing Material and Part Number

2.1 Connector

Tray				Shipping Carton	Packing Carton	
950138-160				950001-001	950000-001	
Outer Dimension		Pocket		Outer Dimension	Outer Dimension	
Pos	Width	Depth	Number of Pockets	W×D×H	W×D×H	
160P	360×165	20.3	18.9	16	385×175×90	406×406×214

2.2 Screw

Plastic Bag

W×D

190 x 120 (reference)

3. Packing Quantity

3.1 Connector

Quantity per Tray	Quantity per Packing Carton
16	16 pockets × 3 trays per shipping carton × 4 shipping cartons = 192 pieces per packing carton

3.2 Screw

Number of Screws per Connector	Number of Screws per Packing Carton
5 screws	960 screws per bag

4. Label

- ① Part Number
- ② Quantity
- ③ Ten Digits Product Lot Number

Y	Y	M	M	D	D	#	#	#	#
Year		Month		Day		Four Digit Code for I-PEX usage			

- ④ Product Name
- ⑤ QR Code
- ⑥ Check Stamp
- ⑦ Country of Origin
- ⑧ Recycle Mark and Compliance Mark
- ⑨ Logo Mark
- ⑩ Manufacture Name

5. Packing Method

5.1 Packing of Tray

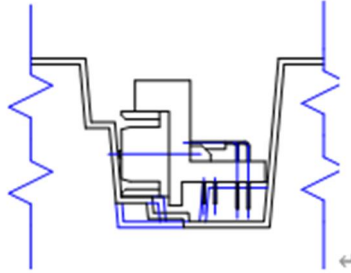


Fig. 1 Connector Orientation Inside the Pocket

5.2 Packing of Shipping Carton

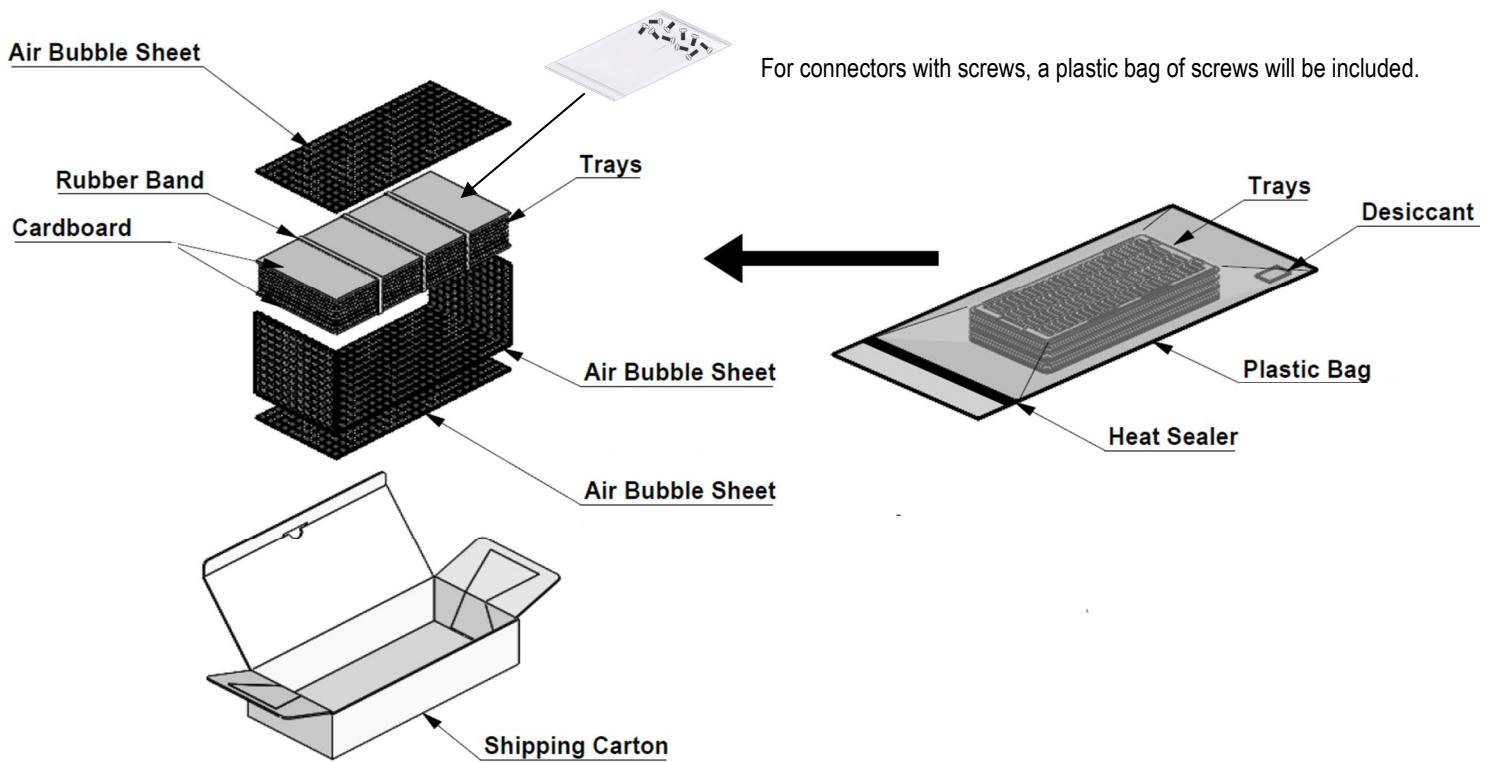


Fig. 2 Packing of Shipping Carton

5.3 Packing of Packing Carton

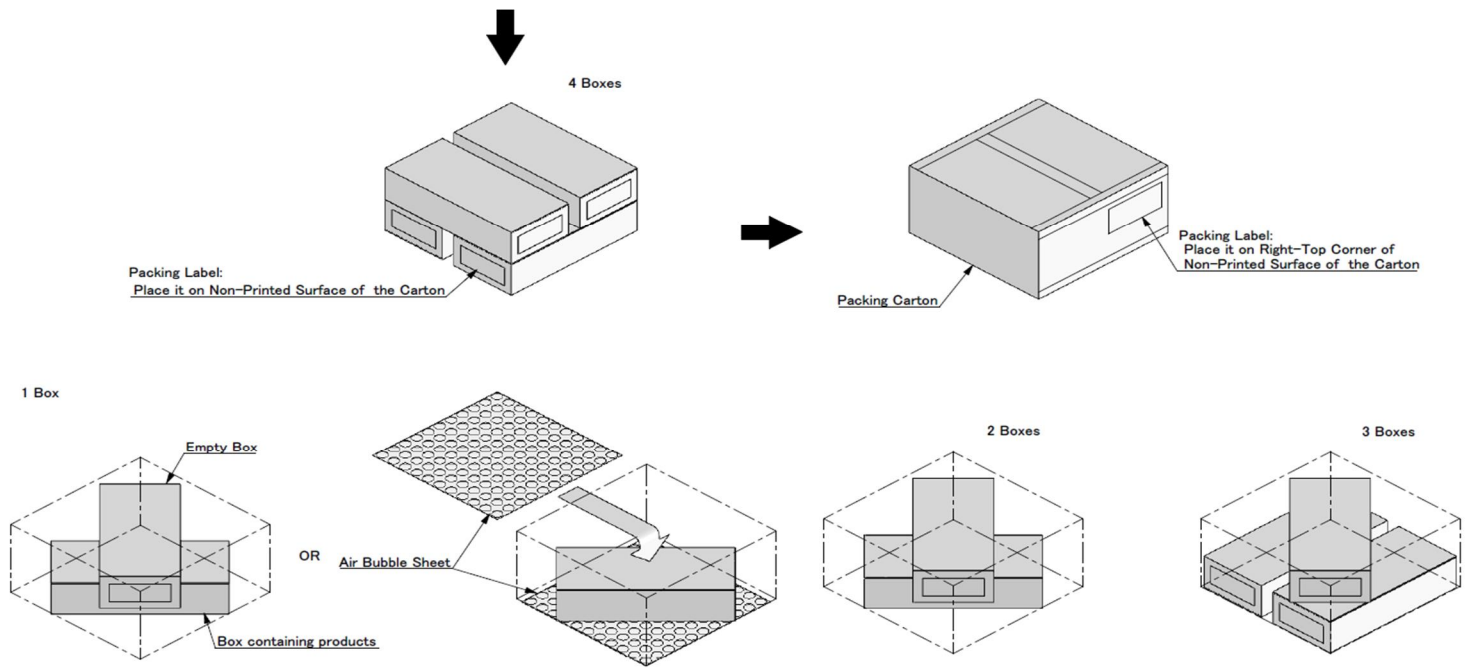


Fig. 3 Packing of Packing Carton