

# CABLINE®-UA II Plug Housing Assembly

Part No. 20497-\*\*\*T-\*\*

## Packing Standard

7	S24136	September 6, 2024	R.Minohara	T.Tanigawa	H.Ikari
6	S18102	January 31, 2018	R.Hoshino	K.Tanaka	M.Takemoto
5	S17549	July 31, 2017	R.Hoshino	K.Tanaka	M.Takemoto
4	S13511	December 25, 2013	S.Kawamura	K.Narita	T.Takano
Rev.	ECN	Date	Prepared by	Checked by	Approved by

# CABLINE-UA II Plug Housing Assembly Packing Standard

Document No.  
300-695-C07EN

## 1. Product Name(s) and Parts Number(s)

Product Name	Part Number
CABLINE-UA II Plug Housing Assembly	20497-***T-**

## 2. Packing Material (Tray)

Pos.	Measure	Pocket Width Refer to Fig. 2	Depth	Pocket Quantity	Shipping Carton	Packing Carton
26P		15.0 × 2.0				
32P	360 × 165	22.5 × 2.0	1.8	200 (Total)	373 × 166 × 84 Inner	406 × 406 × 214 Outer
34P						
40P						
50P						

## 3. Packing Quantity

Pos.	Quantity in Ditch	Quantity in Tray	Quantity in Shipping Carton (Tray Quantity)	Quantity in Packing Carton (Shipping Carton Quantity)
26P				
32P				
34P	1	200	4,000 (20Trays)	16,000 Boxes
40P				
50P				

## 4. Label

- ① Part Number
- ② Quantity
- ③ Ten Digits Product Lot Number

Y	Y	M	M	D	D	#	#	#	#
Year		Month		Day		Four Digit Code for I-PEX usage			

- ④ Product Name
- ⑤ QR Code
- ⑥ Check Stamp
- ⑦ Country of Origin
- ⑧ Recycle Mark and Compliance Mark
- ⑨ Logo Mark
- ⑩ Manufacture Name

Direction of products putting in tray

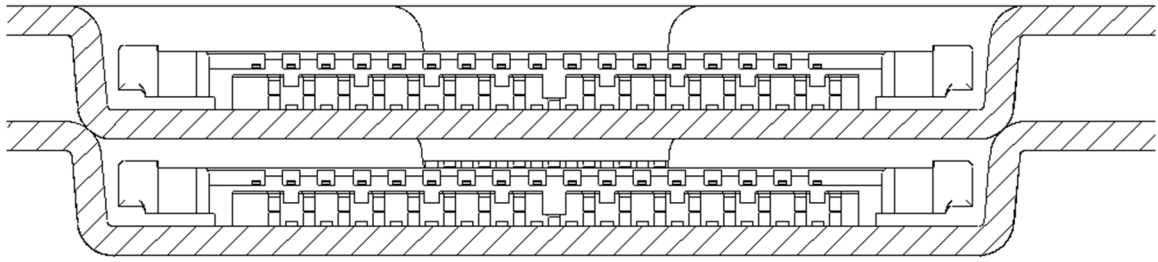
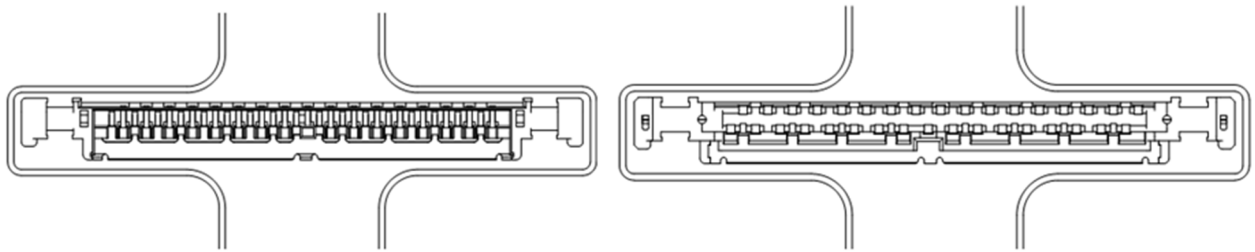


Fig. 1

[NOTE] piling the tray to the same direction and putting lid on the tray with empty tray.



Correct

Incorrect

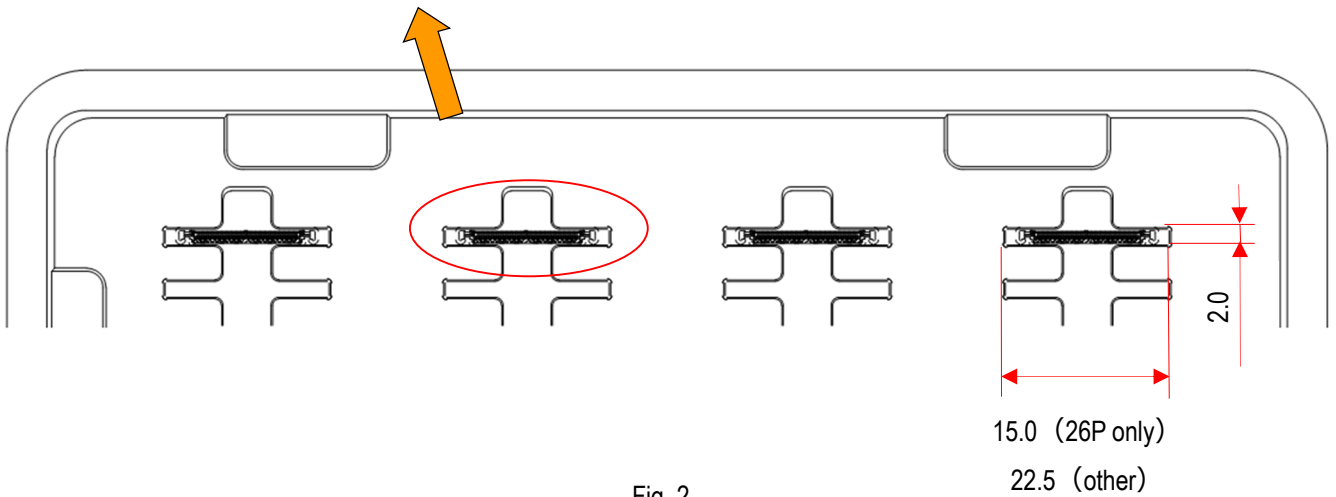


Fig. 2

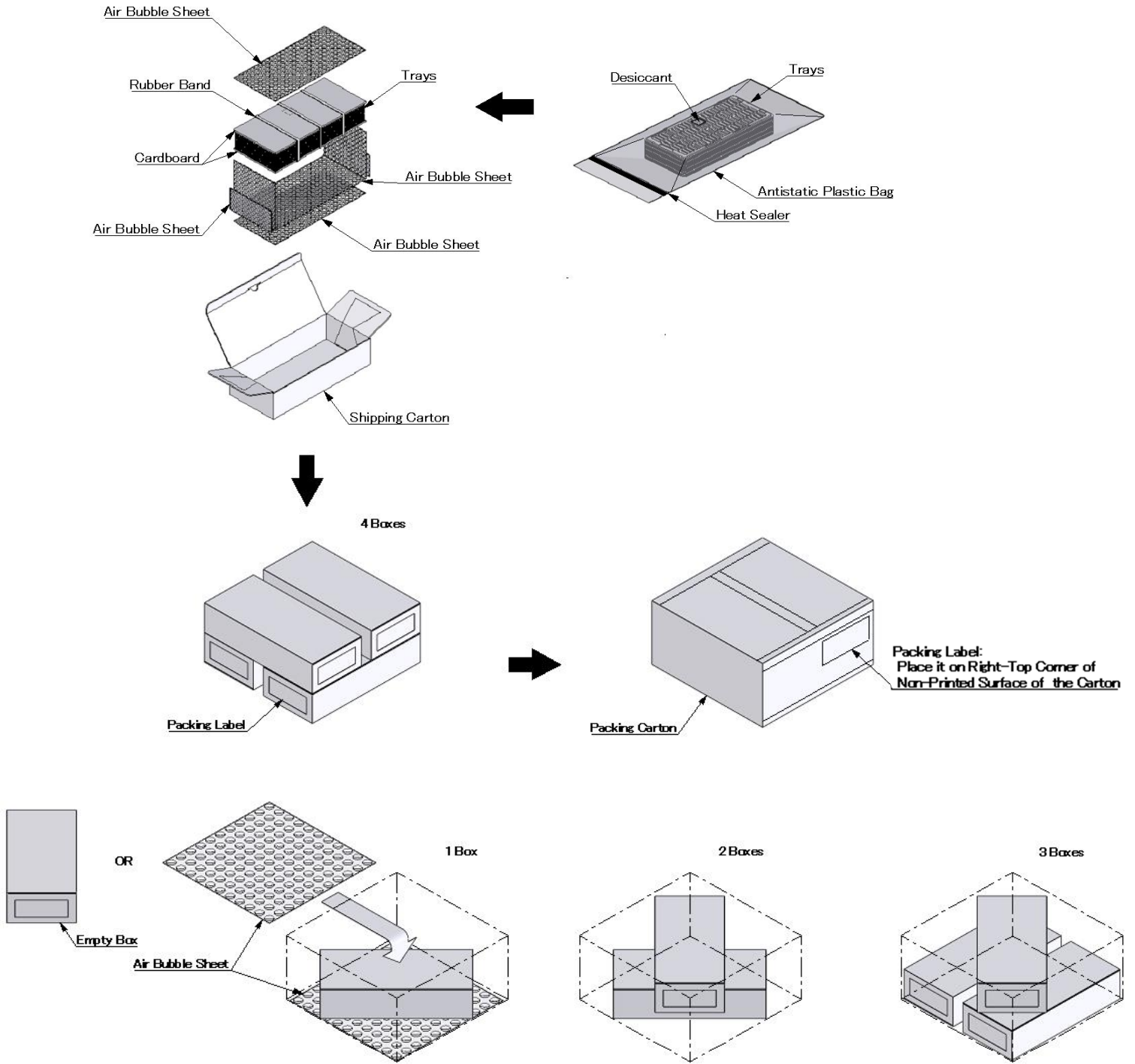


Fig.3