

AP-TSS10 and AP-LT10

Part No. AP-TSS10: 3782-000* AP-LT10: 3571-0081-0*T

Instruction Manual

Rev.	ECN	Date	Prepared by	Checked by	Approved by
1	S25055	January 29, 2025	T. Ito	S. Kamada	Y. Hashimoto
0	S23466	January 11, 2024	S. Kamada	-	Y. Hashimoto

This manual outlines precautions for proper handling of I-PEX AP-TSS10 and AP-LT10 power terminal.

Part Names and Part Numbers

Product Name	AP-TSS10	AP-LT10
Product No.	3782-000*	3571-0081-0*T
Plating	Sn	Sn

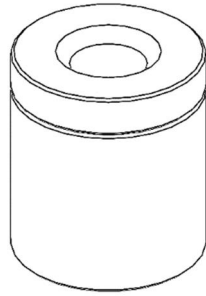


Fig.1: AP-TSS10, 3782-000*

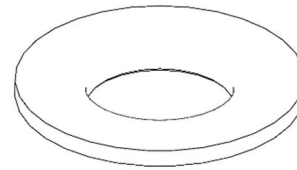


Fig.2: AP-LT10, 3571-0081-0*T

Assembly Components

Height between PCBs	h=8.5 mm
AP-TSS10	3782-000*
AP-LT10	3571-0081-0*T
Bolt	M3-L8 (Strength classification 8.8)
Spring washer	M3
Washer	M3

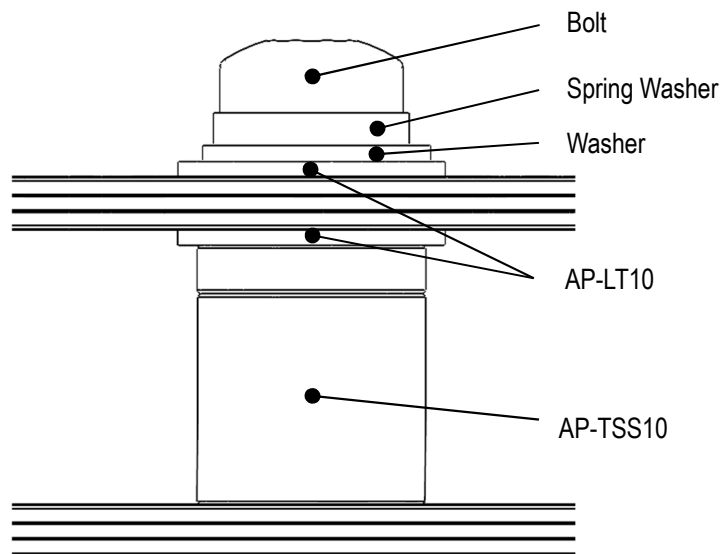


Fig. 3 Assembly Diagram

Assembling Method

Ensure to align the holes of the AP-LT10 and AP-TSS10, as shown in Fig. 4. Install the bolt, spring washer, and washer, then tighten to a torque value within the range of 0.84 ± 0.09 Nm.

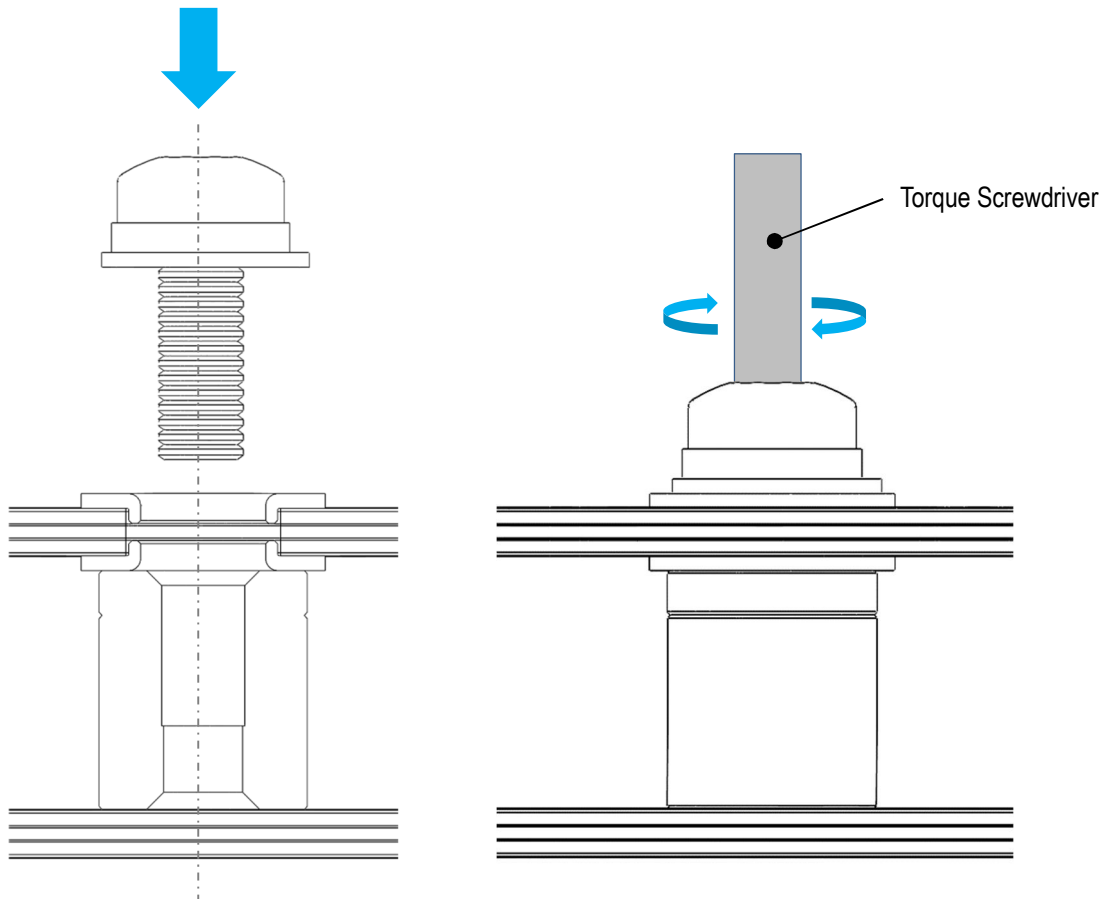


Fig.4 Assembling Method

Precautions for usage

1. Ensure that the orientation groove on the AP-TSS10 is positioned on the upper side before proceeding with the assembly.
To prevent flux from adhering to the contact surfaces of the AP-TSS10 and AP-LT10 during soldering, use a method that inhibits flux adherence.

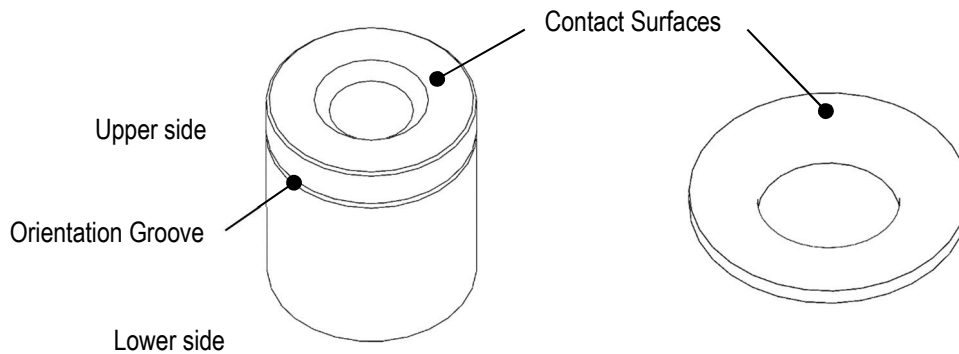


Fig. 5 Component Orientation

2. Ensure to select the appropriate thickness for the PCB to prevent interference with AP-LT10 units or unnecessary clearance between the PCB and AP-LT10.

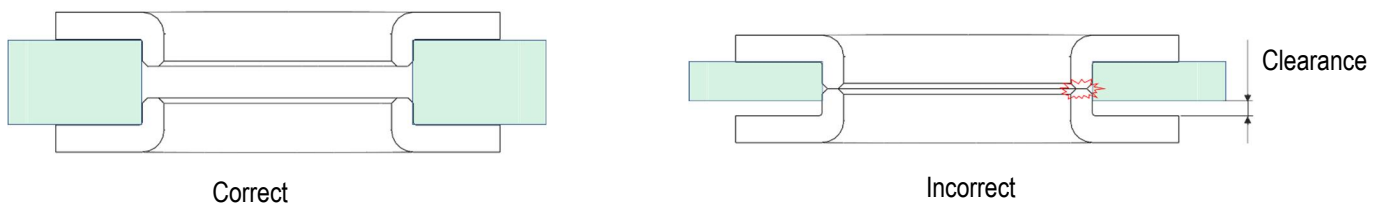


Fig. 6 Selecting Appropriate Thickness for the PCB

3. Align the bolt and AP-LT10 within a non-interfering range.

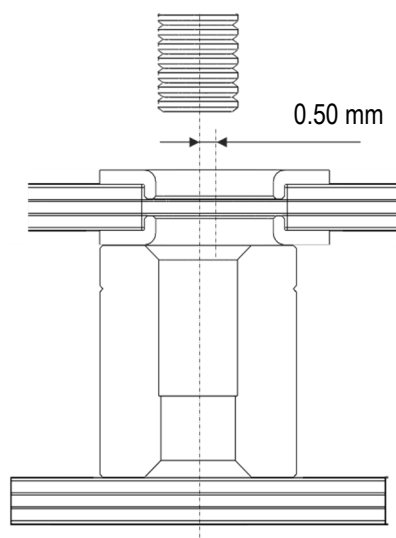


Fig. 7 Misalignment Range

4. The specified bolt length is the appropriate length when the board thickness is 1.6 mm. Please adjust the bolt length according to the board thickness to avoid the following issues:

- ① If the bolt is too long: It may stop midway, causing clearance issues.
- ② If the bolt is too short: It may not engage properly, resulting in poor tightening.

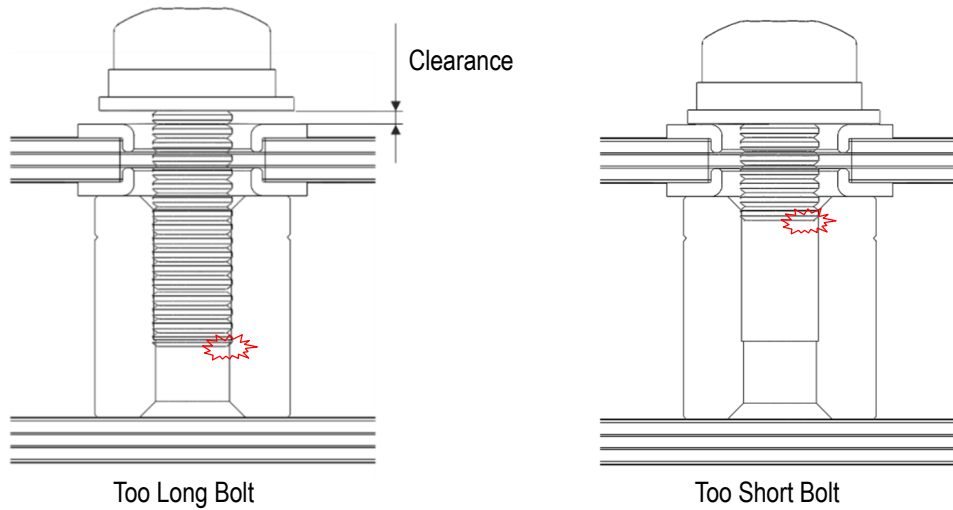


Fig. 8 Issues Caused by Using the Unsuitable Bolt Length

5. Due to the pressure applied during bolt tightening, whiskers will be produced. After installation in your application, please ensure that these whiskers do not affect performance before using the product.