



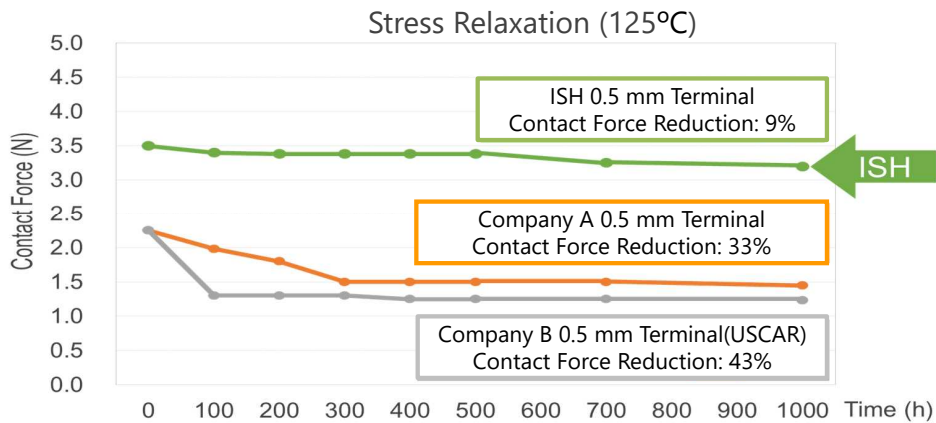
- ✓ High heat and strong vibration resistance for high-reliability applications
- ✓ Unique embedded spring terminals for long-term stable electrical connection
- ✓ LV214 compliant, designed for automotive and industrial grade applications

Pin counts: Single-row		Pin counts: Double-row	
Range	Up to 20	Range	Up to 40
Available	-	Available	8*, 10, 20, 26

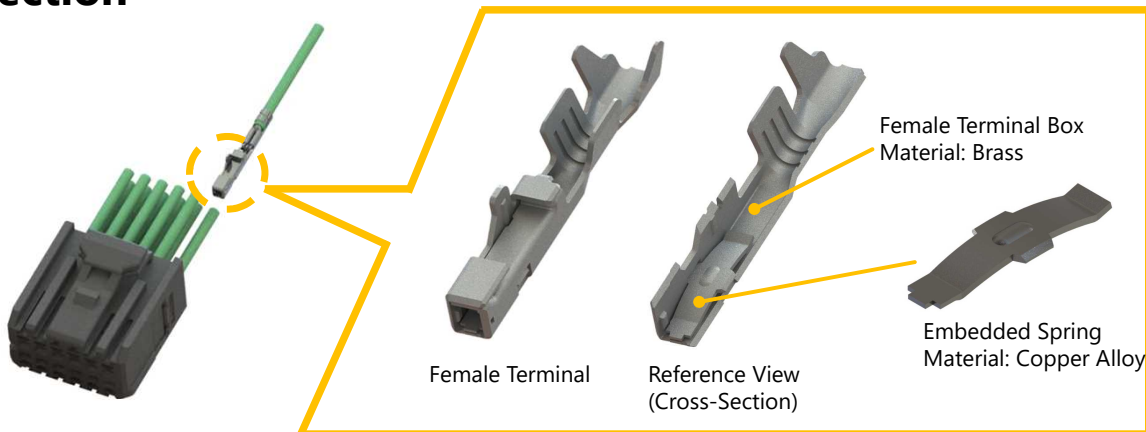
*Please inquire for pin counts not listed or outside of the pin count range.
*ISH V is available in 8P.

Pitch (mm)	2.0
Pin Size (mm)	0.5 × 0.4(020)
Mated Height (mm)	ISH: 20.75 ISHV: 19.95
Width Formula (mm)	ISH : 7.6+1.0*?pin ISHV : 10.5+1.0*?pin
Depth (mm)	ISH : 12.8 ISHV : 13.3
Operating Temperature	-40 - 125°C
Insulation Resistance	100Mohm min.
Vibration Resistance	10G
Current Rating	4.5A per pin
Voltage rating	100V
Withstand Voltage	AC 1000V/minute
Plating	Sn
Housing	Male: glass-filled LCP Female: PBT
Applicable Cable	AWG#22,#20 *Insulation Diameter 1.6 mm max.
Evaluation	Several OEM specs

High heat and strong vibration resistance for high-reliability applications



Unique embedded spring terminals for long-term stable electrical connection



LV214 compliant, designed for automotive and industrial grade applications



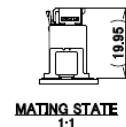
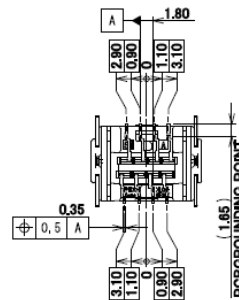
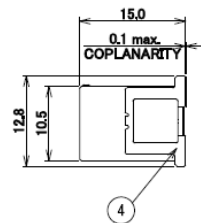
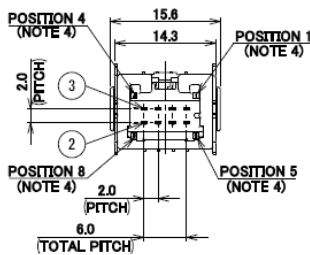
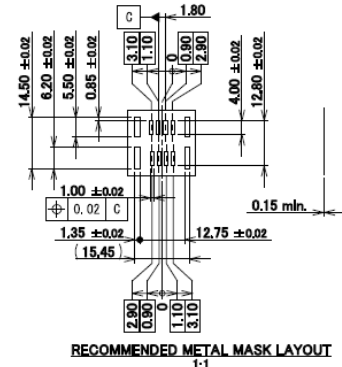
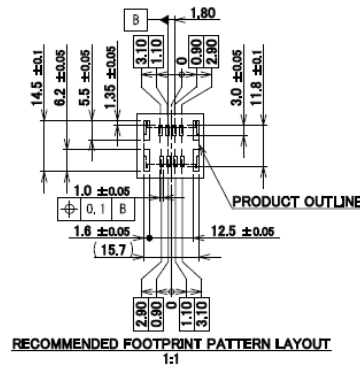
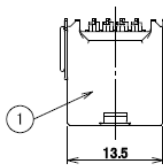
- Headlamp control unit
- Inverter & DC/DC converter
- Battery control module
- Rear view camera module
- Instrument cluster
- Robotic equipment
- Factory automation equipment, etc.

Suitable for high-temperature applications

ISH[®] (Vertical Type) Component Parts Detail

ISH[®] (Vertical Type) MALE (8P):

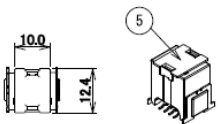
PART NO.	VACUUM CAP
V0026-008E-001	WITH
V0026-008E-002	WITHOUT



NOTES

- APPLICABLE PART NO.:
 - FEMALE HOUSING...V0027-01008-211
 - FEMALE RETAINER...V0027-02008-211
 - FEMALE TERMINAL...VT001-512
- COMPLY WITH ELV/RoHS
- USE METAL MASK WHICH HAS A THICKNESS OF 0.15mm MIN. WHEN THE MALE CONNECTOR IS MOUNTED ON THE PCB.
- POSITION NUMBERS ARE INDICATED.

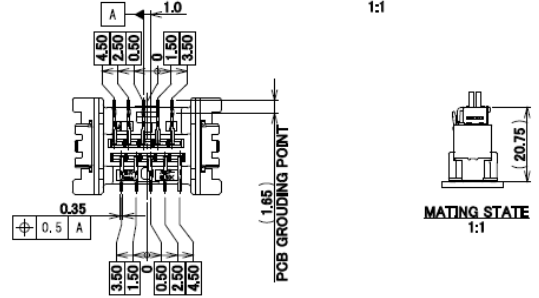
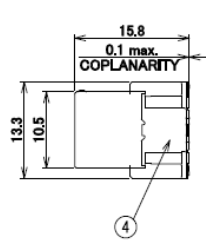
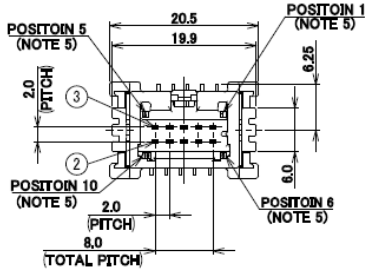
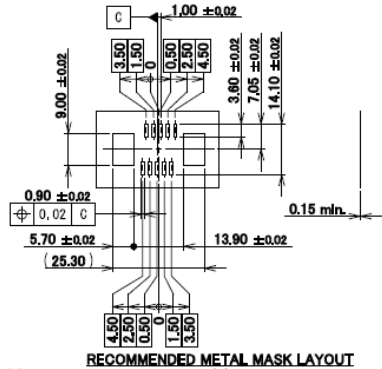
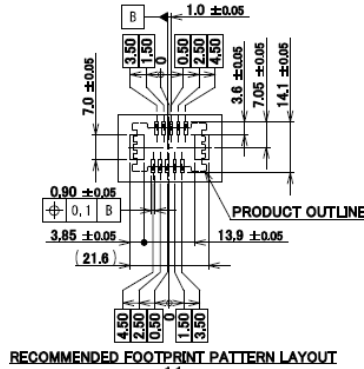
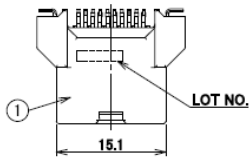
5	VACUUM CAP	GLASS-FILLED LCP	NATURAL
4	HOLD DOWN	BRASS	Sn REFLOW
3	MALE TERMINAL-2	BRASS	Sn REFLOW
2	MALE TERMINAL-1	BRASS	Sn REFLOW
1	MALE HOUSING	GLASS-FILLED LCP	BLACK/UL94V-0
NO.	DESCRIPTION	MATERIAL	FINISH/COLOR/REMARKS



PART NO: V0026-008E-001

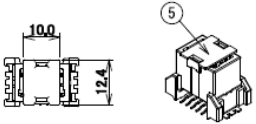
ISH® (Vertical Type) MALE (10P):

PART NO.	VACUUM CAP
V0019-010E-001	WITH
V0019-010E-002	WITHOUT



- NOTES**
- 1.APPLICABLE PART NO.:
 - FEMALE HOUSING...V0020-81010-211
 - FEMALE RETAINER...V0020-82010-211
 - FEMALE TERMINAL...VT001-512
 - 2.COMPLY WITH ELV/RoHS.
 - 3.HANDLE OF PRODUCT IN COMPLIANCE WITH HANDLING MANUAL(HDM-0002)
 - 4.USE METAL MASK WHICH HAS A THICKNESS OF 0.15mm MIN. WHEN THE MALE CONNECTOR IS MOUNTED ON THE PCB.
 - 5.POSITION NUMBERS ARE INDICATED.

NO.	DESCRIPTION	MATERIAL	FINISH/COLOR/REMARKS
5	VACUUM CAP	GLASS-FILLED LCP	NATURAL
4	HOLD DOWN	BRASS	Sn REFLOW
3	MALE TERMINAL-2	BRASS	Sn REFLOW
2	MALE TERMINAL-1	BRASS	Sn REFLOW
1	MALE HOUSING	GLASS-FILLED LCP	BLACK / UL94V-0

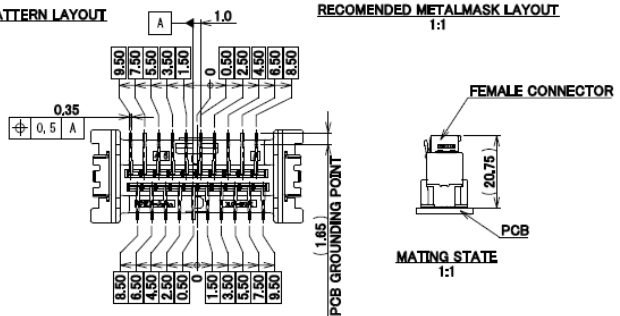
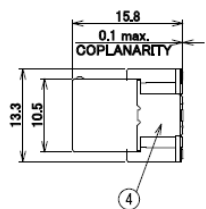
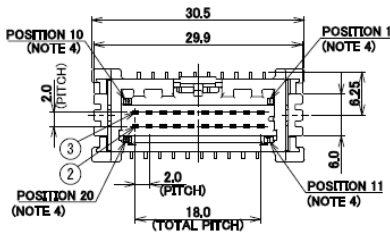
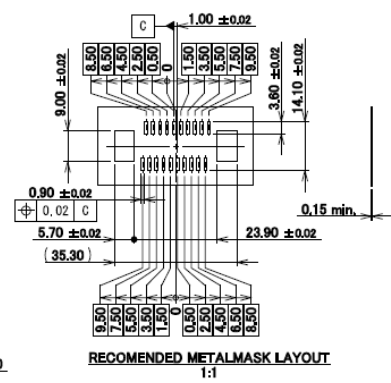
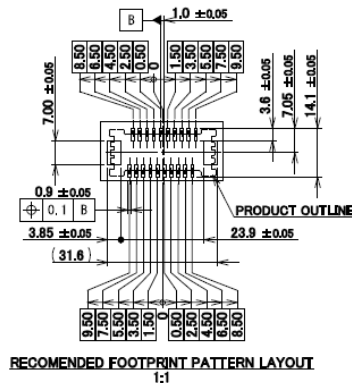
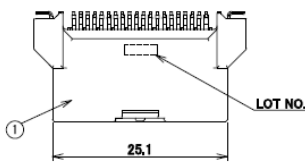


PART NO:V0019-010E-001

Rev. 5

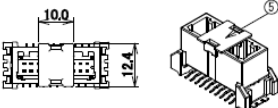
ISH® (Vertical Type) MALE (20P):

PART NO.	VACUUM CAP
V0019-020E-001	WITH
V0019-020E-002	WITHOUT



- NOTES**
- 1.APPLICABLE PART NO.:
 - FEMALE HOUSING...V0020-81020-211
 - FEMALE RETAINER...V0020-82020-211
 - FEMALE TERMINAL...VT001-512
 - 2.COMPLY WITH ELV/RoHS.
 - 3.USE METAL MASK WHICH HAS A THICKNESS OF 0.15mm MIN. WHEN THE MALE CONNECTOR IS MOUNTED ON THE PCB.
 - 4.POSITION NUMBERS ARE INDICATED.

NO.	DESCRIPTION	MATERIAL	FINISH/COLOR/REMARKS
5	VACUUM CAP	GLASS-FILLED LCP	NATURAL
4	HOLD DOWN	BRASS	Sn REFLOW
3	MALE TERMINAL-2	BRASS	Sn REFLOW
2	MALE TERMINAL-1	BRASS	Sn REFLOW
1	MALE HOUSING	GLASS-FILLED LCP	BLACK/UL94V-0

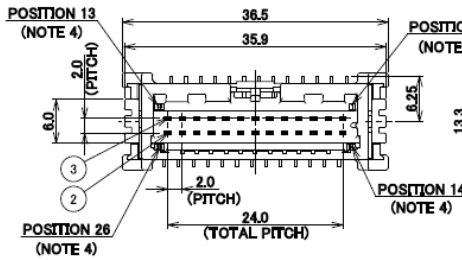
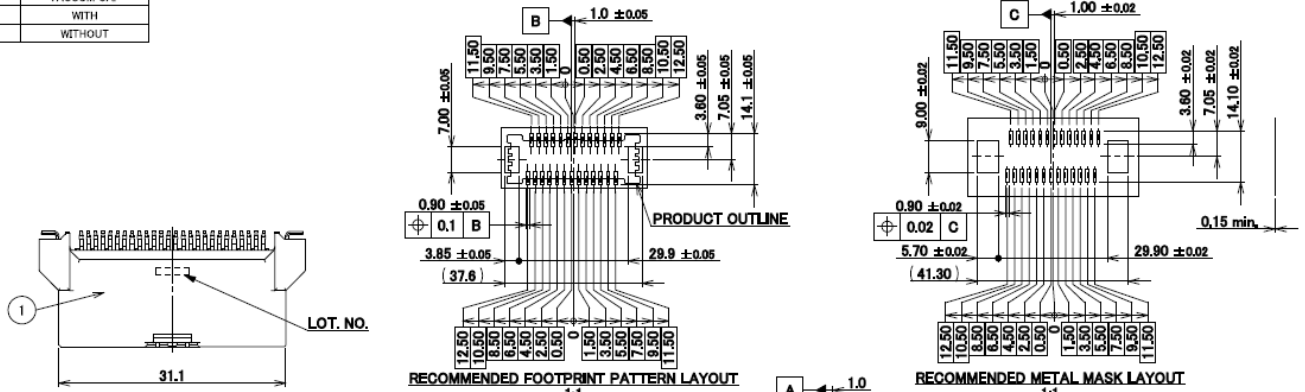


PART NO:V0019-020E-001

Rev. 6

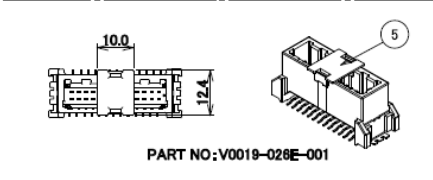
ISH[®] (Vertical Type) MALE (26P):

PART NO.	VACUUM CAP
V0019-026E-001	WITH
V0019-026E-002	WITHOUT



NOTES
 1. APPLICABLE PART NO.:
 * FEMALE HOUSING *** V0020-91026-211
 * FEMALE RETAINER *** V0020-92026-211
 * FEMALE TERMINAL *** VT001-512
 2. COMPLY WITH ELV/RoHS
 3. USE METAL MASK WHICH HAS A THICKNESS OF 0.15mm MIN. WHEN THE MALE CONNECTOR IS MOUNTED ON THE PCB.
 4. POSITION NUMBERS ARE INDICATED.

5	VACUUM GAP	GLASS-FILLED LCP	NATURAL
4	HOLD DOWN	BRASS	Sn REFLOW
3	MALE TERMINAL-2	BRASS	Sn REFLOW
2	MALE TERMINAL-1	BRASS	Sn REFLOW
1	MALE HOUSING	GLASS-FILLED LCP	BLACK
NO.	DESCRIPTION	MATERIAL	FINISH/COLOR/REMARKS

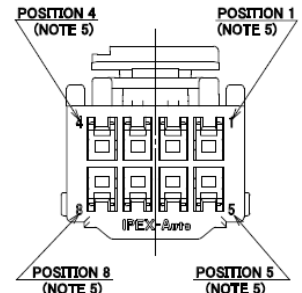
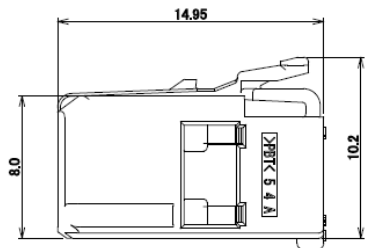
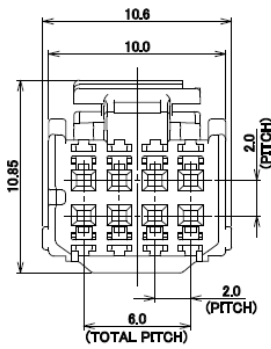
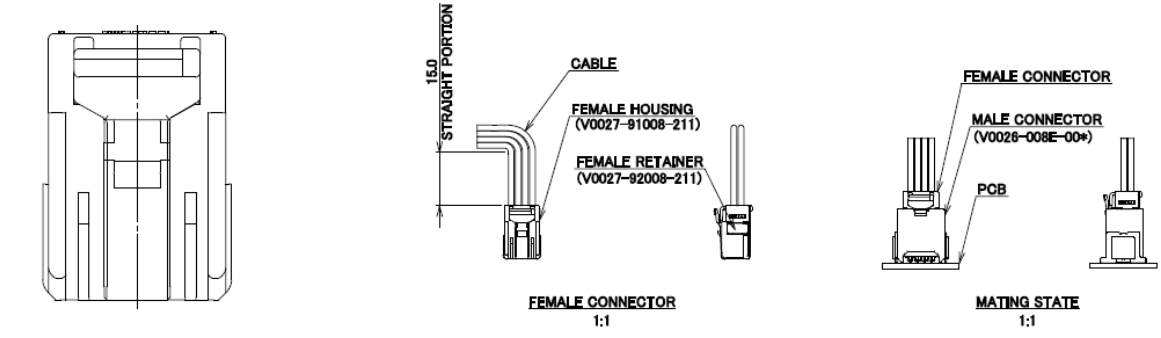


PART NO: V0019-026E-001

Rev. 4

ISH[®] (Vertical Type) FEMALE (8P):

PART NO.	LOCK TYPE	KEY CODING	COLOR	FOR REAR COVER
V0027-91008-211	NORMAL ROCK	-	BLACK	N/A



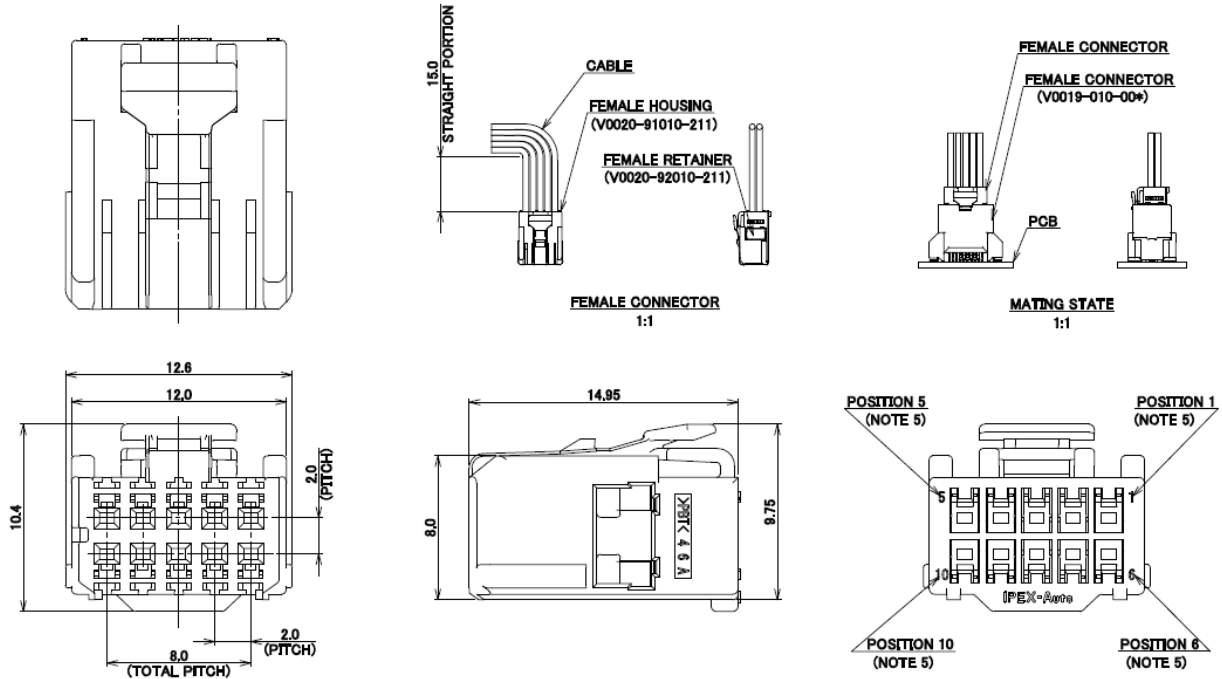
1	FEMALE HOUSING	PBT	BLACK
NO.	DESCRIPTION	MATERIAL	FINISH/COLOR/REMARKS

NOTES
 1. APPLICABLE PART NO.:
 * FEMALE TERMINAL *** VT001-512
 * FEMALE RETAINER *** V0027-92008-211
 2. MATERIAL: PBT
 3. COMPLY WITH ELV/RoHS
 4. HANDLE OF PRODUCT IN COMPLIANCE WITH HANDLING MANUAL [HDM-0002]
 5. POSITION NUMBERS ARE INDICATED.

Rev. 3

ISH® (Vertical Type) FEMALE (10P):

PART NO.	LOCK TYPE	KEY CODING	COLOR	FOR REAR COVER
V0020-91010-211	NORMAL ROCK	-	BLACK	N/A



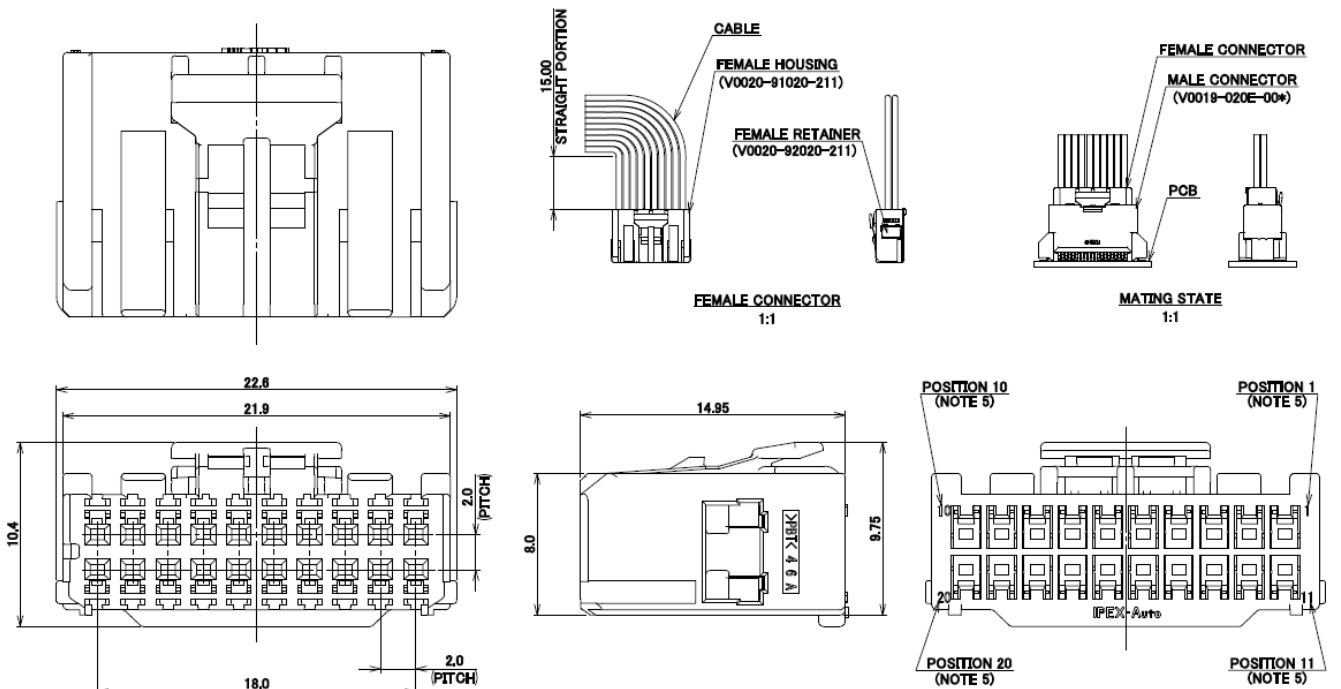
NO.	DESCRIPTION	MATERIAL	FINISH/COLOR/REMARKS
①	FEMALE HOUSING	PBT	BLACK

- NOTES
- 1.APPLICABLE PART NO.:
 *FEMALE TERMINAL ... VT001-512
 *FEMALE RETAINER ... V0020-92010-211
 - 2.MATERIAL: PBT
 - 3.COMPLY WITH ELV/RoHS.
 - 4.HANDLE OF PRODUCT IN COMPLIANCE WITH HANDLING MANUAL [HDM-0002]
 - 5.POSITION NUMBERS ARE INDICATED.

Rev. 3

ISH® (Vertical Type) FEMALE (20P):

PART NO.	LOCK TYPE	KEY CODING	COLOR	FOR REAR COVER
V0020-91020-211	NORMAL ROCK	-	BLACK	N/A



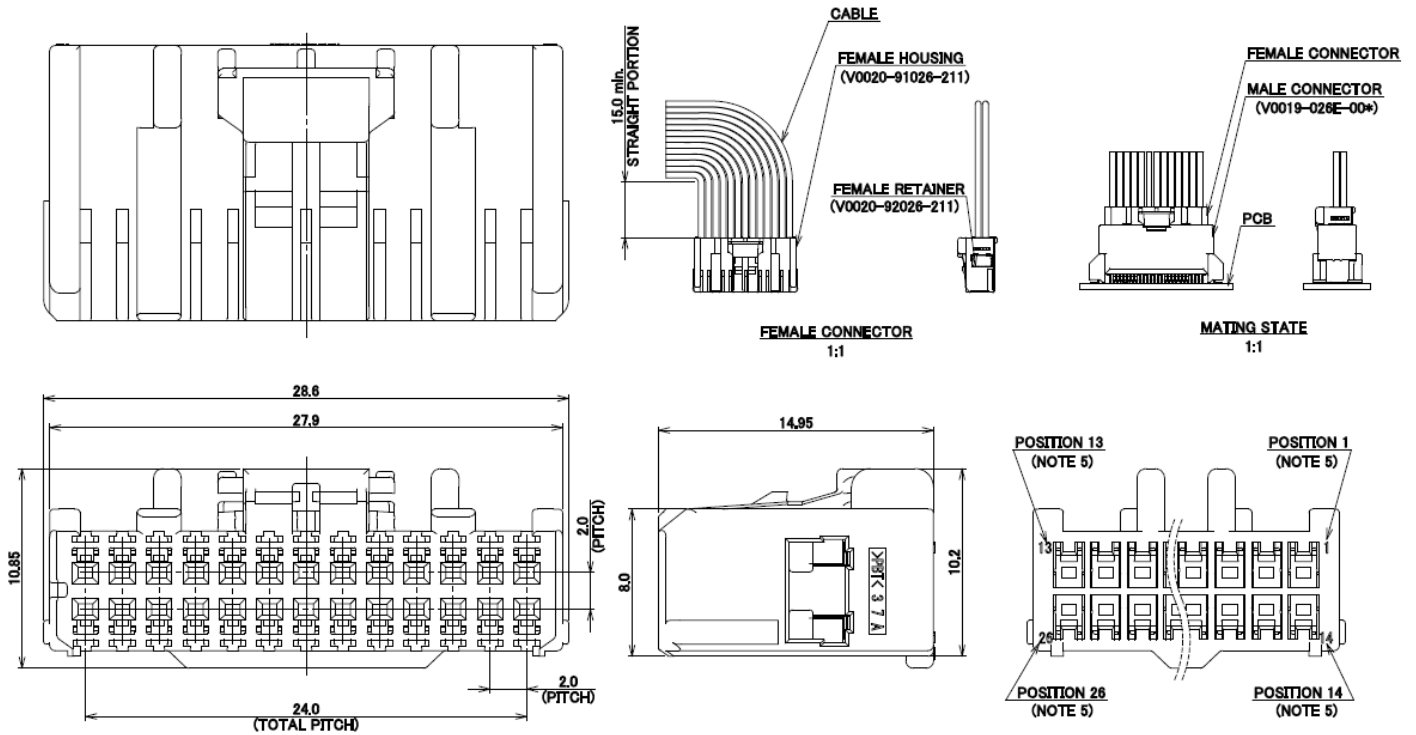
NO.	DESCRIPTION	MATERIAL	FINISH/COLOR/REMARKS
1	FEMALE HOUSING	PBT	BLACK

- NOTES
- 1.APPLICABLE PART NO.:
 *FEMALE TERMINAL ... VT001-512
 *FEMALE RETAINER ... V0020-92020-211
 - 2.MATERIAL: PBT
 - 3.COMPLY WITH ELV/RoHS.
 - 4.HANDLE OF PRODUCT IN COMPLIANCE WITH HANDLING MANUAL [HDM-0002]
 - 5.POSITION NUMBERS ARE INDICATED.

Rev. 4

ISH® (Vertical Type) FEMALE (26P):

PART NO.	LOCK TYPE	KEY CODING	COLOR	FOR REAR COVER
V0020-91026-211	NORMAL ROCK	-	BLACK	N/A



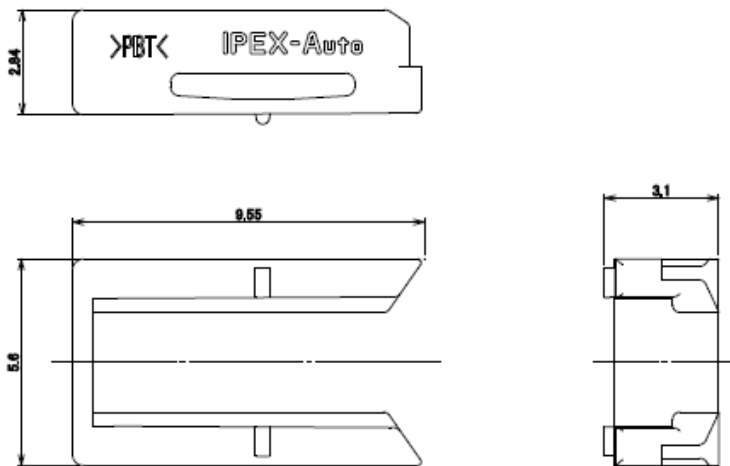
1	FEMALE HOUSING	PBT	BLACK
NO.	DESCRIPTION	MATERIAL	FINISH/COLOR/REMARKS

- NOTES**
 1. APPLICABLE PART NO.:
 * FEMALE TERMINAL *** VT001-512
 * FEMALE RETAINER *** V0020-92026-211
 2. MATERIAL: PBT
 3. COMPLY WITH ELV/RoHS.
 4. HANDLE OF PRODUCT IN COMPLIANCE WITH HANDLING MANUAL [HDM-0002]
 5. POSITION NUMBERS ARE INDICATED.

Rev. 3

ISH® (Vertical Type) FEMALE RETAINER (8P):

PART NO.
V0027-92008-211

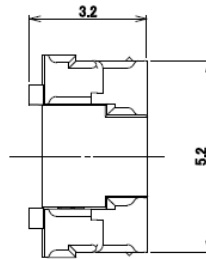
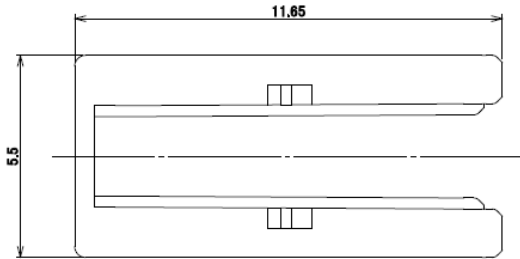
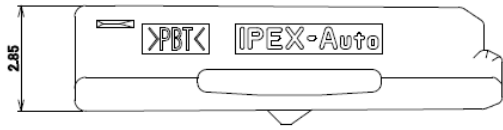


- NOTES**
 1. APPLICABLE PART NO.:
 * FEMALE HOUSING *** V0020-91008-211
 V0020-91008-212
 V0020-91008-213
 V0020-91008-214
 V0020-91008-215
 V0027-91008-211
 2. MATERIAL: PBT
 3. COMPLY WITH ELV/RoHS.
 4. HANDLE OF PRODUCT IN COMPLIANCE WITH HANDLING MANUAL [HDM-0002]
- | 1 | FEMALE RETAINER | PBT | BLACK |
|-----|-----------------|----------|----------------------|
| NO. | DESCRIPTION | MATERIAL | FINISH/COLOR/REMARKS |

Rev. 5

ISH® (Vertical Type) FEMALE RETAINER (10P):

PART NO.
V0020-92010-211



NOTES

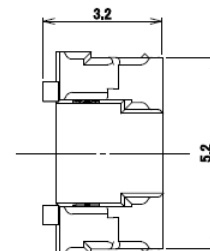
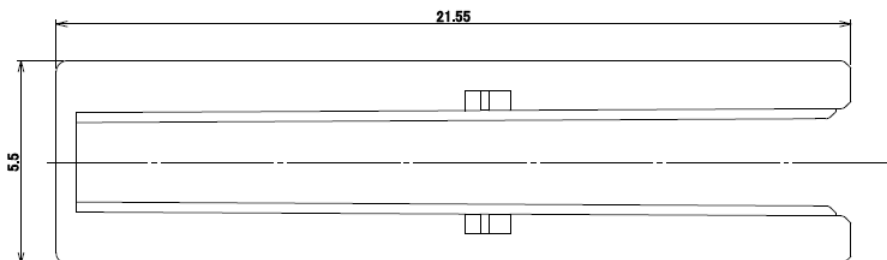
- 1. APPLICABLE PART NO.:
• FEMALE HOUSING---V0020-91010-211
- 2. MATERIAL: PBT
- 3. COMPLY WITH ELV/RoHS.
- 4. HANDLE OF PRODUCT IN COMPLIANCE WITH HANDLING MANUAL [HDM-0002]

1	FEMALE RETAINER	PBT	BLACK
NO.	DESCRIPTION	MATERIAL	FINISH/COLOR/REMARKS

Rev. 3

ISH® (Vertical Type) FEMALE RETAINER (20P):

PART NO.
V0020-92020-211



NOTES

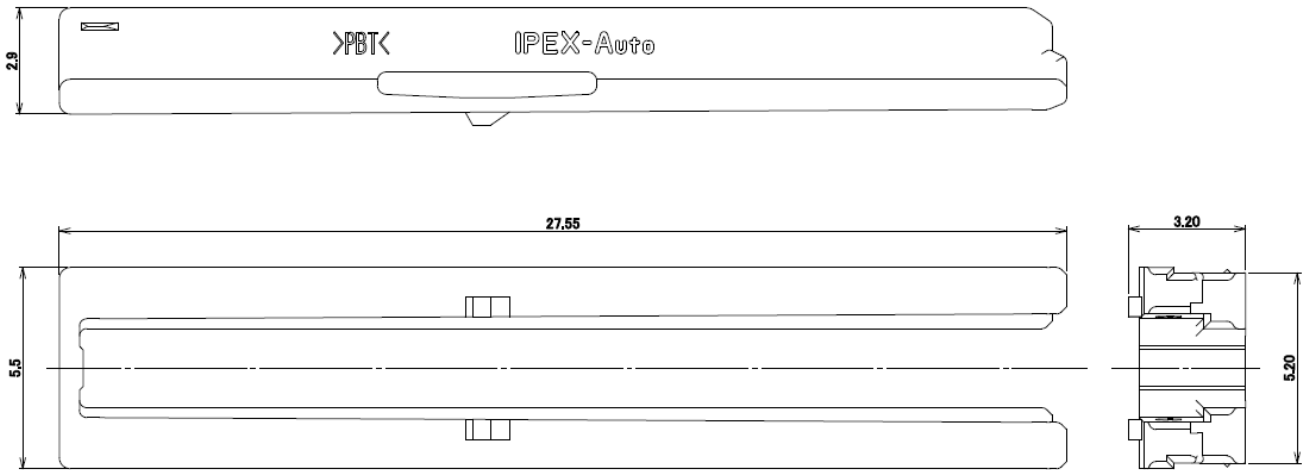
- 1. APPLICABLE PART NO.:
• FEMALE HOUSING---V0020-91020-211
- 2. MATERIAL: PBT
- 3. COMPLY WITH ELV/RoHS
- 4. HANDLE OF PRODUCT IN COMPLIANCE WITH HANDLING MANUAL [HDM-0002]

1	FEMALE RETAINER	PBT	BLACK
NO.	DESCRIPTION	MATERIAL	FINISH/COLOR/REMARKS

Rev. 4

ISH® (Vertical Type) FEMALE RETAINER (26P):

PART NO.
V0020-92026-211



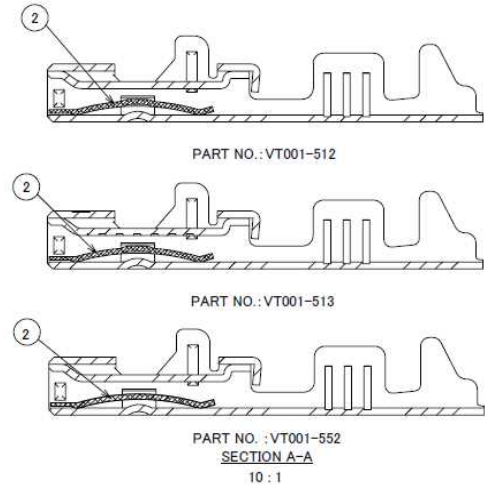
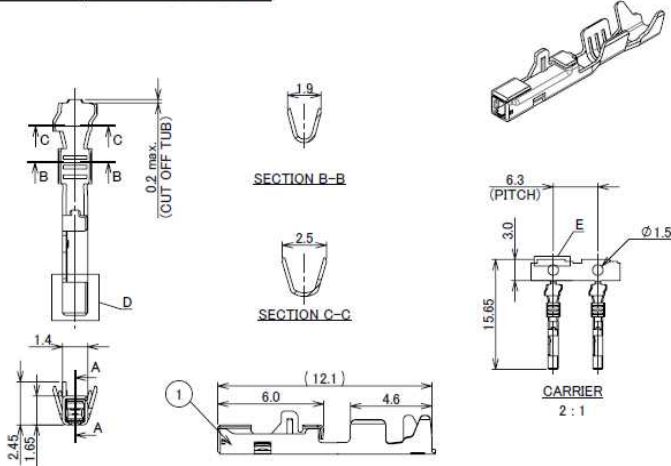
- NOTES**
 1. APPLICABLE PART NO.:
 • FEMALE HOUSING...V0020-91026-211
 2. MATERIAL: PBT
 3. COMPLY WITH ELV/RoHS
 4. HANDLE OF PRODUCT IN COMPLIANCE WITH HANDLING MANUAL [HDM-0002]

NO.	DESCRIPTION	MATERIAL	FINISH/COLOR/REMARKS
1	FEMALE RETAINER	PBT	BLACK

Rev. 3

ISH® (Vertical Type) TERMINAL:

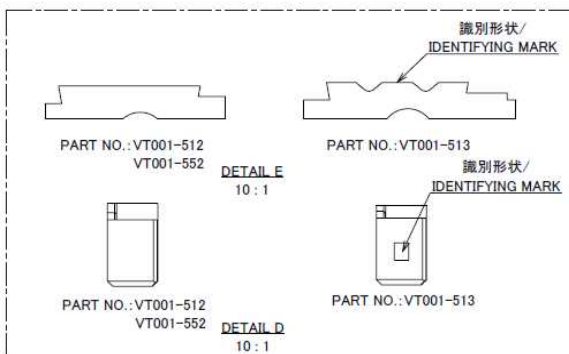
PART NO.	PLATING
VT001-512	Sn REFLOW
VT001-513	Sn REFLOW
VT001-552	CONTACT AREA : Au PLATING CRIMPING AREA : Sn REFLOW



- 注記**
 1. 適合メスハウジング: ISH CONNECTOR シリーズ
 2. 適用電線: 0.3mm² / 0.5mm² (被覆外径 φ1.60mm MAX.)
 3. ELV/RoHS 対応品
 4. 圧着仕様は取扱説明書 [HDM-0002] に準拠

- NOTE**
 1. APPLICABLE FEMALE HOUSING: ISH CONNECTOR SERIES
 2. APPLICABLE CABLE SIZE: 0.3mm² / 0.5mm² (FINISHED φ1.60mm MAX.)
 3. COMPLY WITH ELV/RoHS
 4. TERMINAL CRIMP SPECIFICATION MUST BE COMPLIANT WITH HANDLING MANUAL [HDM-0002].

2	SPRING	COPPER ALLOY	VT001-51* PLATING : Sn REFLOW VT001-552 PLATING : Au PLATING
1	BODY	BRASS	VT001-51* PLATING : Sn REFLOW VT001-552 PLATING : Au PLATING CONTACT AREA : Au PLATING CRIMPING AREA : Sn REFLOW
NO.	DESCRIPTION	MATERIAL	FINISH/COLOR/REMARKS



Rev. 8



Copyright © I-PEX Inc. 2020. All rights reserved.

I-PEX, MHF, CABLINE, NOVASTACK, EVAFLEX, MINIFLEX, ISH, IARPB, IASLP, ESTORQ, i-Fit and ISFIT are registered trademarks of I-PEX Inc. Please note that the contents in the catalog might be changed without prior notification. I-PEX Inc. assumes no responsibility for any inaccuracies or obligation to update Information on these documents. Please be sure to read and understand the latest "Precautions for Use" and "Instruction Manual" before you use our products. We shall not be responsible for any defects, damages or troubles in case you use our products without following the precautions for use. Please feel free to contact our sales representatives when you use our products for any applications that require very high reliability and safety, or that relate to human life (ex. nuclear power control, aerospace, transportation, medical equipment, safety equipment etc.).

Contact your sales representative for more detailed information. [i-pex.com]