

Recommended P/N 20709-0**E-01

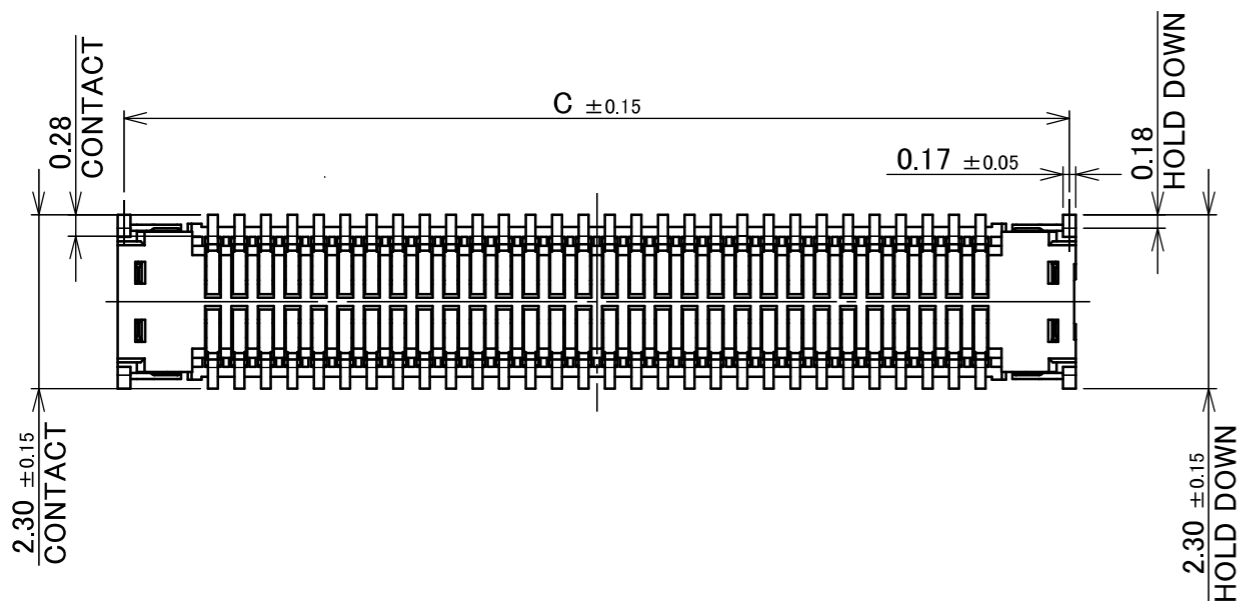
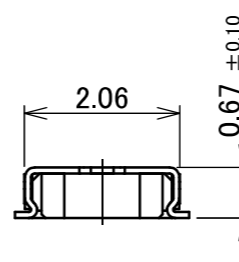
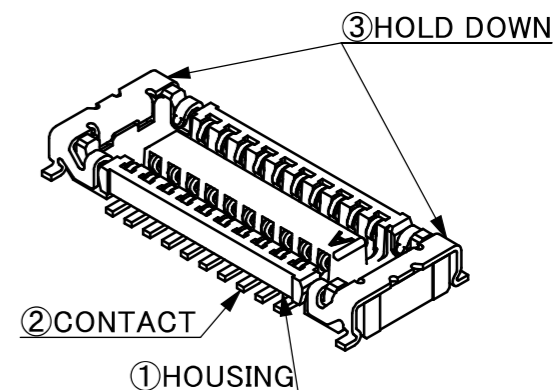
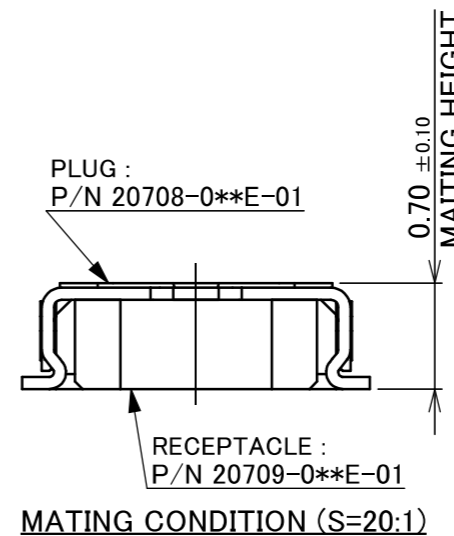
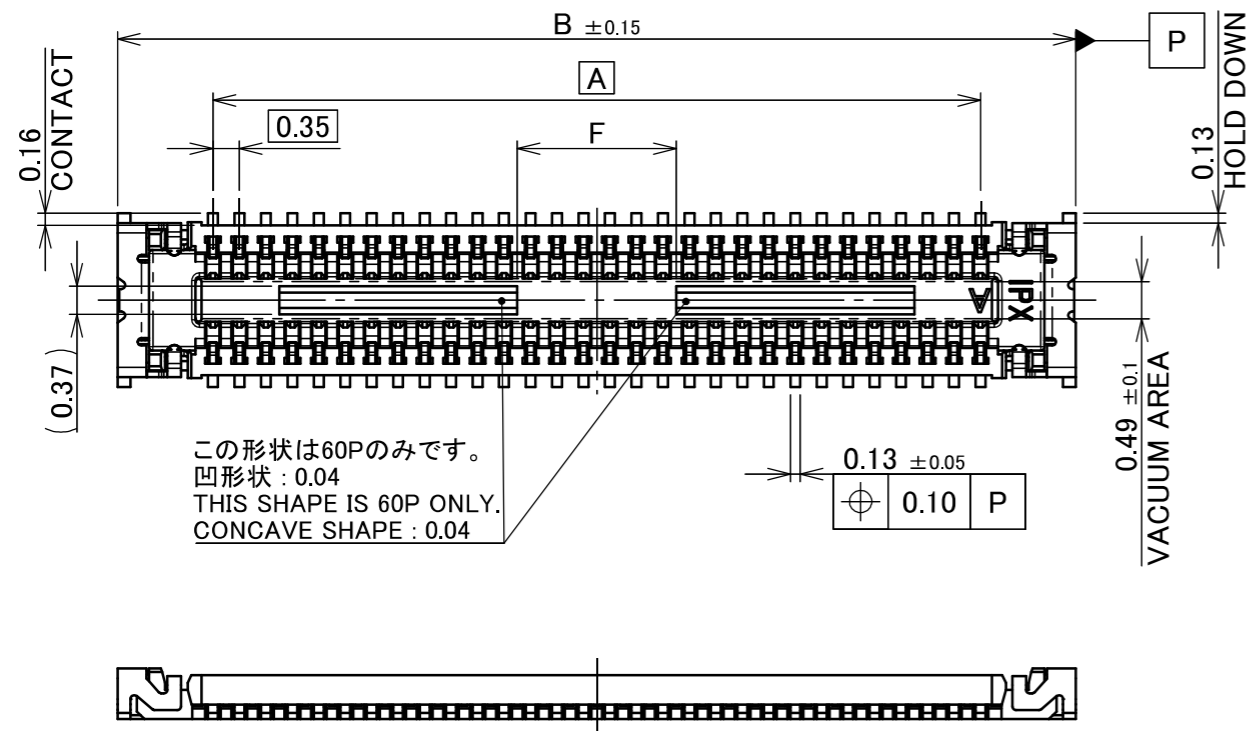
PART No.	Pos	A	B	C	D	E	F
20709-010E-01	10	1.40	3.92	3.75	2.70	4.10	-
20709-014E-01	14	2.10	4.62	4.45	3.40	4.80	-
20709-018E-01	18	2.80	5.32	5.15	4.10	5.50	-
20709-020E-01	20	3.15	5.67	5.50	4.45	5.85	-
20709-024E-01	24	3.85	6.37	6.20	5.15	6.55	-
20709-030E-01	30	4.90	7.42	7.25	6.20	7.60	-
20709-034E-01	34	5.60	8.12	7.95	6.90	8.30	-
20709-040E-01	40	6.65	9.17	9.00	7.95	9.35	-
20709-050E-01	50	8.40	10.92	10.75	9.70	11.10	-
20709-060E-01	60	10.15	12.67	12.50	11.45	12.85	2.10



Halogen Free



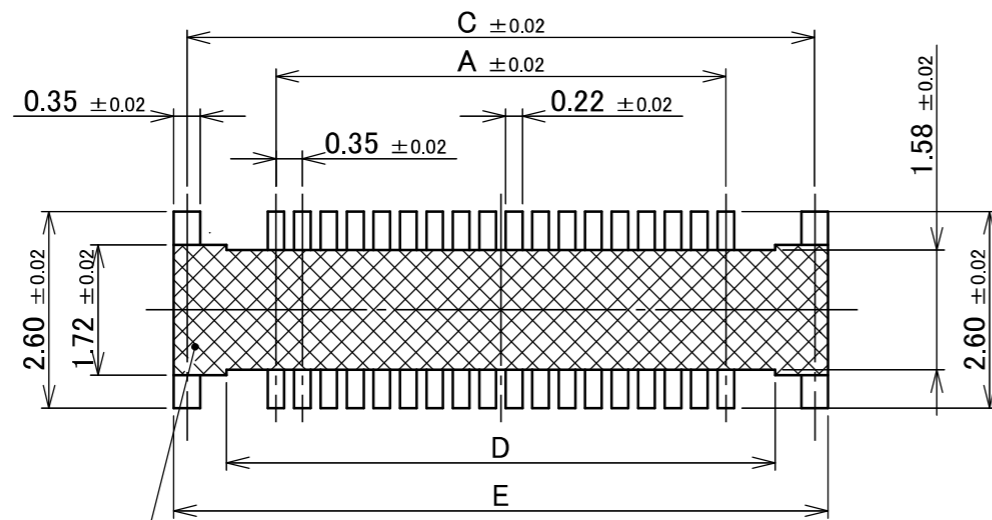
RoHS Compliant



3	HOLD DOWN	CORSON ALLOY	ALL OVER Ni 1.27 μm MIN. CONTACT PART Au 0.1 μm MIN./ SOLDERING PART Au 0.01 μm MIN.	
2	CONTACT	CORSON ALLOY	ALL OVER Ni 1.27 μm MIN. CONTACT PART Au 0.1 μm MIN./ SOLDERING PART Au 0.01 μm MIN.	
1	HOUSING	LCP	UL94V-0, BEIGE	
NO.	DISCRIPTION	MATERIAL	FINISH , REMARKS	
16	Z241858	Haji	2024/12/24	S.S
15	Z230376	M.H	2023/03/30	Y.H
14	Z220204	K.W	2022/02/28	Y.H
13	Z190514	R.S	2019/04/12	TAK
12	Z180678	R.H	2018/05/28	TAK
11	Z171526	Y.B	2017/12/27	TAK
REV.	ECN	BY	DATE	APP.
REVISION RECORD				
		E.Kawabe		
NO. DISCRIPTION		MATERIAL		FINISH , REMARKS
16	Z241858	Haji	2024/12/24	S.S
15	Z230376	M.H	2023/03/30	Y.H
14	Z220204	K.W	2022/02/28	Y.H
13	Z190514	R.S	2019/04/12	TAK
12	Z180678	R.H	2018/05/28	TAK
11	Z171526	Y.B	2017/12/27	TAK
REV.	ECN	BY	DATE	APP.
REVISION RECORD				
		E.Kawabe		
NO. DISCRIPTION		MATERIAL		FINISH , REMARKS
16	Z241858	Haji	2024/12/24	S.S
15	Z230376	M.H	2023/03/30	Y.H
14	Z220204	K.W	2022/02/28	Y.H
13	Z190514	R.S	2019/04/12	TAK
12	Z180678	R.H	2018/05/28	TAK
11	Z171526	Y.B	2017/12/27	TAK
REV.	ECN	BY	DATE	APP.
REVISION RECORD				
		E.Kawabe		
NO. DISCRIPTION		MATERIAL		FINISH , REMARKS
16	Z241858	Haji	2024/12/24	S.S
15	Z230376	M.H	2023/03/30	Y.H
14	Z220204	K.W	2022/02/28	Y.H
13	Z190514	R.S	2019/04/12	TAK
12	Z180678	R.H	2018/05/28	TAK
11	Z171526	Y.B	2017/12/27	TAK
REV.	ECN	BY	DATE	APP.
REVISION RECORD				
		E.Kawabe		
NO. DISCRIPTION		MATERIAL		FINISH , REMARKS
16	Z241858	Haji	2024/12/24	S.S
15	Z230376	M.H	2023/03/30	Y.H
14	Z220204	K.W	2022/02/28	Y.H
13	Z190514	R.S	2019/04/12	TAK
12	Z180678	R.H	2018/05/28	TAK
11	Z171526	Y.B	2017/12/27	TAK
REV.	ECN	BY	DATE	APP.
REVISION RECORD				
		E.Kawabe		
NO. DISCRIPTION		MATERIAL		FINISH , REMARKS
16	Z241858	Haji	2024/12/24	S.S
15	Z230376	M.H	2023/03/30	Y.H
14	Z220204	K.W	2022/02/28	Y.H
13	Z190514	R.S	2019/04/12	TAK
12	Z180678	R.H	2018/05/28	TAK
11	Z171526	Y.B	2017/12/27	TAK
REV.	ECN	BY	DATE	APP.
REVISION RECORD				
		E.Kawabe		
NO. DISCRIPTION		MATERIAL		FINISH , REMARKS
16	Z241858	Haji	2024/12/24	S.S
15	Z230376	M.H	2023/03/30	Y.H
14	Z220204	K.W	2022/02/28	Y.H
13	Z190514	R.S	2019/04/12	TAK
12	Z180678	R.H	2018/05/28	TAK
11	Z171526	Y.B	2017/12/27	TAK
REV.	ECN	BY	DATE	APP.
REVISION RECORD				
		E.Kawabe		
NO. DISCRIPTION		MATERIAL		FINISH , REMARKS
16	Z241858	Haji	2024/12/24	S.S
15	Z230376	M.H	2023/03/30	Y.H
14	Z220204	K.W	2022/02/28	Y.H
13	Z190514	R.S	2019/04/12	TAK
12	Z180678	R.H	2018/05/28	TAK
11	Z171526	Y.B	2017/12/27	TAK
REV.	ECN	BY	DATE	APP.
REVISION RECORD				
		E.Kawabe		
NO. DISCRIPTION		MATERIAL		FINISH , REMARKS
16	Z241858	Haji	2024/12/24	S.S
15	Z230376	M.H	2023/03/30	Y.H
14	Z220204	K.W	2022/02/28	Y.H
13	Z190514	R.S	2019/04/12	TAK
12	Z180678	R.H	2018/05/28	TAK
11	Z171526	Y.B	2017/12/27	TAK
REV.	ECN	BY	DATE	APP.
REVISION RECORD				
		E.Kawabe		
NO. DISCRIPTION		MATERIAL		FINISH , REMARKS
16	Z241858	Haji	2024/12/24	S.S
15	Z230376	M.H	2023/03/30	Y.H
14	Z220204	K.W	2022/02/28	Y.H
13	Z190514	R.S	2019/04/12	TAK
12	Z180678	R.H	2018/05/28	TAK
11	Z171526	Y.B	2017/12/27	TAK
REV.	ECN	BY	DATE	APP.
REVISION RECORD				
		E.Kawabe		
NO. DISCRIPTION		MATERIAL		FINISH , REMARKS
16	Z241858	Haji	2024/12/24	S.S
15	Z230376	M.H	2023/03/30	Y.H
14	Z220204	K.W	2022/02/28	Y.H
13	Z190514	R.S	2019/04/12	TAK
12	Z180678	R.H	2018/05/28	TAK
11	Z171526	Y.B	2017/12/27	TAK
REV.	ECN	BY	DATE	APP.
REVISION RECORD				
		E.Kawabe		
NO. DISCRIPTION		MATERIAL		FINISH , REMARKS
16	Z241858	Haji	2024/12/24	S.S
15	Z230376	M.H	2023/03/30	Y.H
14	Z220204	K.W	2022/02/28	Y.H
13	Z190514	R.S	2019/04/12	TAK
12	Z180678	R.H	2018/05/28	TAK
11	Z171526	Y.B	2017/12/27	TAK
REV.	ECN	BY	DATE	APP.
REVISION RECORD				
		E.Kawabe		
NO. DISCRIPTION		MATERIAL		FINISH , REMARKS
16	Z241858	Haji	2024/12/24	S.S
15	Z230376	M.H	2023/03/30	Y.H
14	Z220204	K.W	2022/02/28	Y.H
13	Z190514	R.S	2019/04/12	TAK
12	Z180678	R.H	2018/05/28	TAK
11	Z171526	Y.B	2017/12/27	TAK
REV.	ECN	BY	DATE	APP.
REVISION RECORD				
		E.Kawabe		
NO. DISCRIPTION		MATERIAL		FINISH , REMARKS
16	Z241858	Haji	2024/12/24	S.S
15	Z230376	M.H	2023/03/30	Y.H
14	Z220204	K.W	2022/02/28	Y.H
13	Z190514	R.S	2019/04/12	TAK
12	Z180678	R.H	2018/05/28	TAK
11	Z171526	Y.B	2017/12/27	TAK
REV.	ECN	BY	DATE	APP.
REVISION RECORD				
		E.Kawabe		
NO. DISCRIPTION		MATERIAL		FINISH , REMARKS
16	Z241858	Haji	2024/12/24	S.S
15	Z230376	M.H	2023/03/30	Y.H
14	Z220204	K.W	2022/02/28	Y.H
13	Z190514	R.S	2019/04/12	TAK
12	Z180678	R.H	2018/05/28	TAK
11	Z171526	Y.B	2017/12/27	TAK
REV.	ECN	BY	DATE	APP.
REVISION RECORD				
		E.Kawabe		
NO. DISCRIPTION		MATERIAL		FINISH , REMARKS
16	Z241858	Haji	2024/12/24	S.S
15	Z230376	M.H	2023/03/30	Y.H
14	Z220204	K.W	2022/02/28	Y.H
13	Z190514	R.S	2019/04/12	TAK
12	Z180678	R.H	2018/05/28	TAK
11	Z171526	Y.B	2017/12/27	TAK
REV.	ECN	BY	DATE	APP.
REVISION RECORD				
		E.Kawabe		
NO. DISCRIPTION		MATERIAL		FINISH , REMARKS
16	Z241858	Haji	2024/12/24	S.S
15	Z230376	M.H	2023/03/30	Y.H
14	Z220204	K.W	2022/02/28	Y.H
13	Z190514	R.S	2019/04/12	TAK
12	Z180678	R.H	2018/05/28	TAK
11	Z171526	Y.B	2017/12/27	TAK
REV.	ECN	BY	DATE	APP.
REVISION RECORD				
		E.Kawabe		
NO. DISCRIPTION		MATERIAL		FINISH , REMARKS
16	Z241858	Haji	2024/12/24	S.S
15	Z230376	M.H	2023/03/30	Y.H
14	Z220204	K.W	2022/02/28	Y.H
13	Z190514	R.S	2019/04/12	TAK
12	Z180678	R.H	2018/05/28	TAK
11	Z171526	Y.B	2017/12/27	TAK
REV.	ECN	BY	DATE	APP.
REVISION RECORD				
		E.Kawabe		
NO. DISCRIPTION		MATERIAL		FINISH , REMARKS
16	Z241858	Haji	2024/12/24	S.S
15	Z230376	M.H	2023/03/30	Y.H
14	Z220204	K.W	2022/02/28	Y.H
13	Z190514	R.S	2019/04/12	TAK
12	Z180678	R.H	2018/05/28	TAK
11	Z171526	Y.B	2017/12/27	TAK
REV.	ECN	BY	DATE	APP.
REVISION RECORD				
		E.Kawabe		
NO. DISCRIPTION		MATERIAL		FINISH , REMARKS
16	Z241858	Haji	2024/12/24	S.S
15	Z230376	M.H	2023/03/30	Y.H
14	Z220204	K.W	2022/02/28	Y.H
13	Z190514	R.S	2019/04/12	TAK
12	Z180678	R.H	2018/05/28	TAK
11	Z171526	Y.B	2017/12/27	TAK
REV.	ECN	BY	DATE	APP.
REVISION RECORD				
		E.Kawabe		
NO. DISCRIPTION		MATERIAL		FINISH , REMARKS
16	Z241858	Haji	2024/12/24	S.S
15	Z230376	M.H	2023/03/30	Y.H
14	Z220204	K.W	2022/02/28	Y.H
13	Z190514	R.S	2019/04/12	TAK
12	Z180678	R.H	2018/05/28	TAK
11	Z171526	Y.B	2017/12/27	TAK
REV.	ECN	BY	DATE	APP.
REVISION RECORD				
		E.Kawabe		
NO. DISCRIPTION		MATERIAL		FINISH , REMARKS
16	Z241858	Haji	2024/12/24	S.S
15	Z230376	M.H	2023/03/30	Y.H
14	Z220204	K.W	2022/02/28	Y.H
13	Z190514	R.S	2019/04/12	TAK

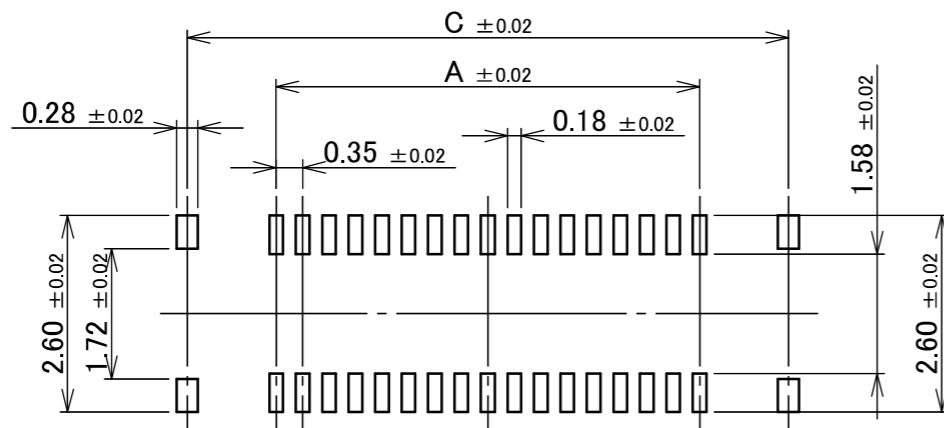
ITEMS	SPECIFICATION
APPLICABLE CONNECTOR PART No.	20708-0**E-01
RATING VOLTAGE	50V AC (r.m.s) / DC
RATING AMPERAGE (FOR SIGNAL CONTACT)	0.3A AC/DC (PER CONTACT PIN), 12.0A AC/DC(TOTAL) 1.0A AC/DC (PER CONTACT OF UP TO 8 PINS)
RATING AMPERAGE (FOR POWER CONTACT)	2.0A AC/DC (PER CONTACT PIN), 4.0A AC/DC(TOTAL)
OPERATING TEMPERATURE	233~358K(-40°C~+85°C)
OPERATING HUMIDITY	85% MAX.(NON-CONDENSING)
CONTACT RESISTANCE (FOR SIGNAL CONTACT)	INITIAL : 30mohm MAX. / AFTER TEST : \triangleleft 20mohm MAX.
CONTACT RESISTANCE (FOR POWER CONTACT)	INITIAL : 30mohm MAX. / AFTER TEST : \triangleleft 20mohm MAX.
INSULATION RESISTANCE	INITIAL : 1,000Mohm MIN. / AFTER TEST : 500Mohm MIN.
DIELECTRIC WITHSTANDING VOLTAGE	AC200V 1min
DURABILITY	20 CYCLES
MATING FORCE (INITIAL)	~28P 2.0 N/Pin MAX. 30P~ 1.0 N/Pin MAX.
UNMATING FORCE (AFTER TEST)	~28P 0.30 N/Pin MIN. 30P~ 0.15 N/Pin MIN.
COPLANARITY	0.08 MAX.
PRODUCT SPECIFICATION	PRS-2334
TEST REPORT	TR-16143
PACKING STANDARD	PST-15077
INSTRUCTION MANUAL	HIM-15014
APPEARANCE CRITERIA No.	QLS-A***

ANGLE	$\pm 2^\circ$	6 OVER 30 MAX.	± 0.3	PROJECTION 	SERIES No. R2	CUSTOMER COPY		
6 MAX.	± 0.2	30 OVER 120 MAX.	± 0.5					
GENERAL TOLERANCE.				TITLE NOVASTACK® 35-P RECEPTACLE ASSEMBLY	SCALE UNIT mm	I-PEX		
DWG.	DATE							
CHK.								
APP.								
				DWG. No.	20709	SIZE	SHEET	REV.
						A3	2/5	16

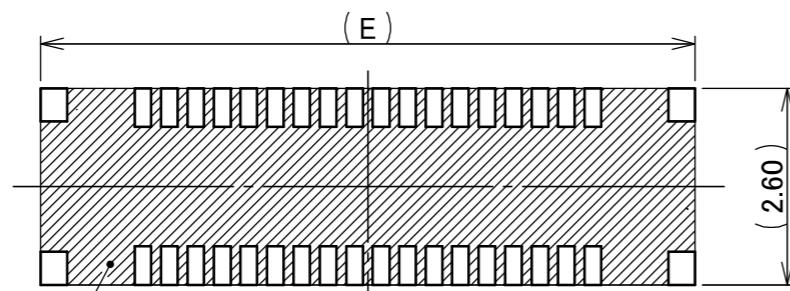


半田上がり防止の為、半田付けをしないで下さい。
 パターンを設けるときは、レジストを設けて下さい。
 MUST BE NOT SOLDERING AREA FOR PREVENT FROM SOLDER WICKING.
 MUST BE RESIST COATING ON THE PATTERN.

RECOMMENDED PATTERN LAYOUT



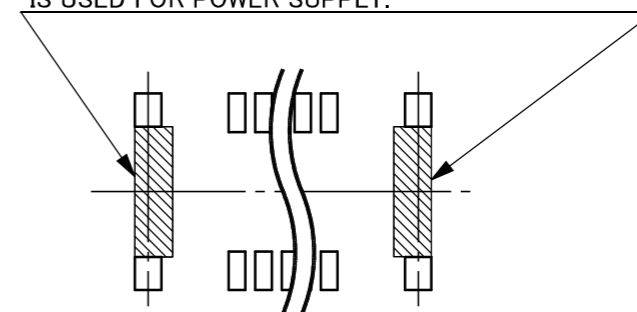
RECOMMENDED METAL MASK LAYOUT
 THICKNESS : 0.10 mm



NOTE. 1

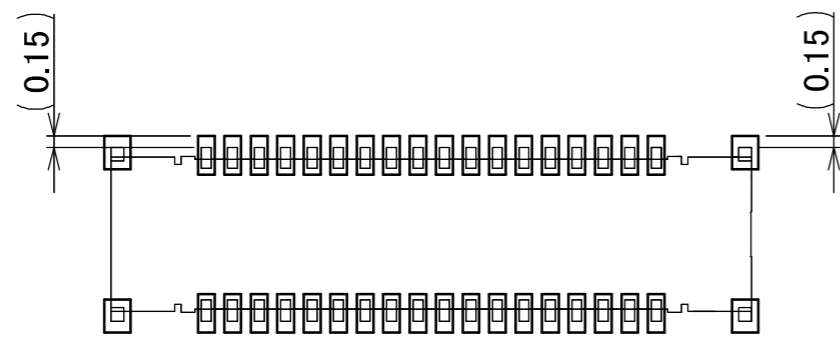
NOTES.
 1. THIS AREA CANNOT MOUNT ANOTHER COMPONENTS.

ホールドダウンを電源用としてご使用の場合は、
 両パットを図のように繋げて下さい。
 PAD IS CONNECTED LIKE FIGURE WHEN HOLD DOWN
 IS USED FOR POWER SUPPLY.

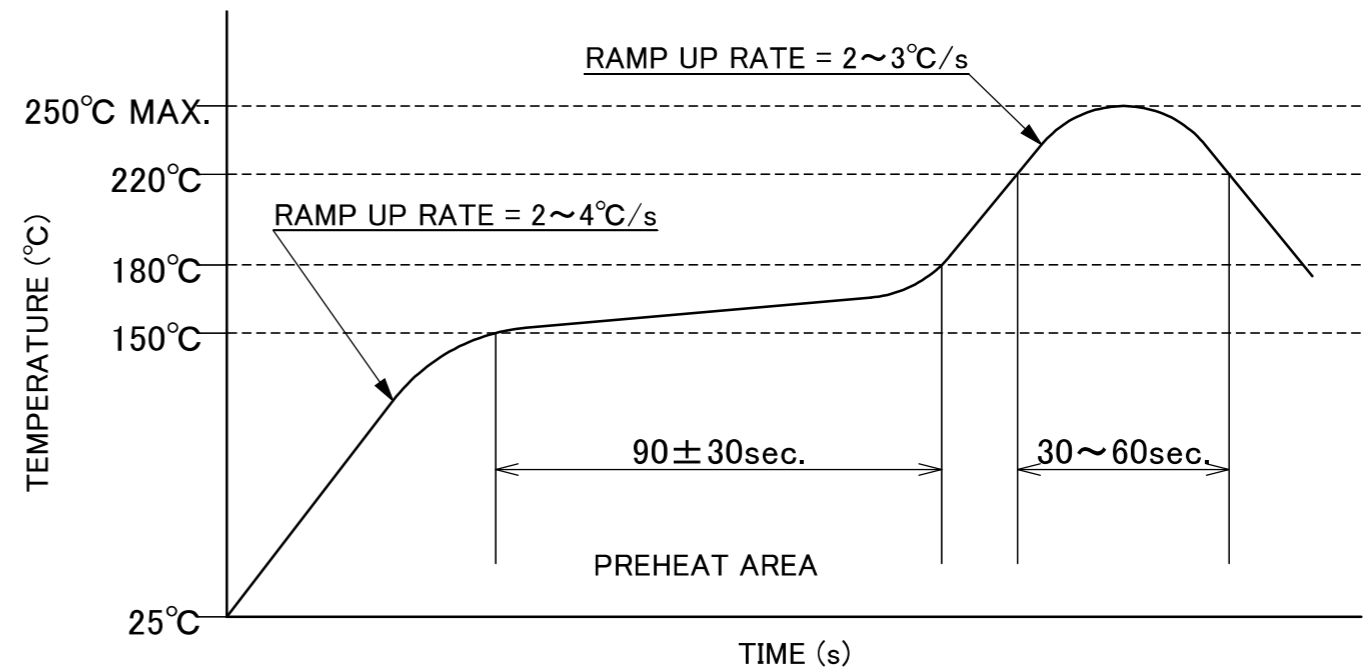


HOLD DOWN PAD LAYOUT
 USED FOR POWER SUPPLY

ANGLE	±2°	6 OVER 30 MAX.	±0.3	PROJECTION 	SERIES No. R2	CUSTOMER COPY		
6 MAX.	±0.2	30 OVER 120 MAX.	±0.5					
GENERAL TOLERANCE.				TITLE NOVASTACK® 35-P RECEPTACLE ASSEMBLY	SCALE 5:1 UNIT mm			
DWG.	DATE							
CHK.								
APP.								
				DWG. No.	20709	SIZE A3	SHEET 3/5	REV. 16



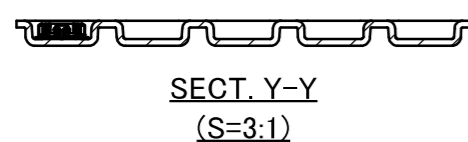
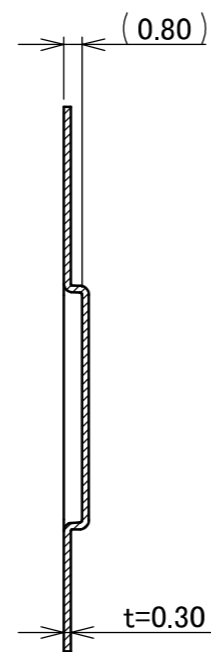
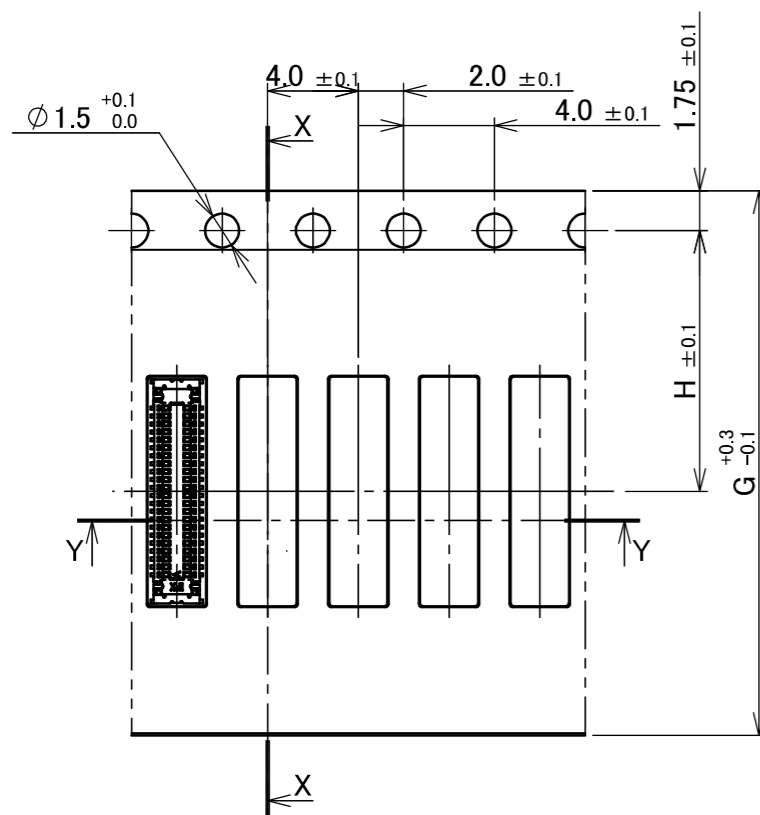
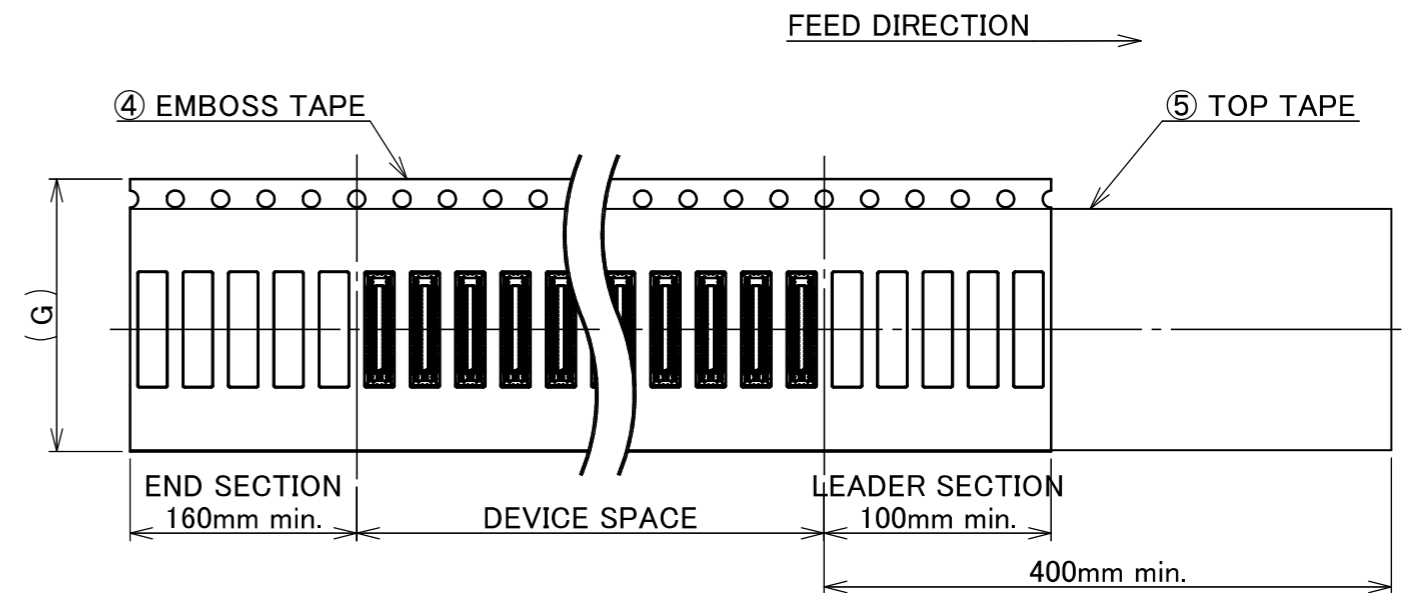
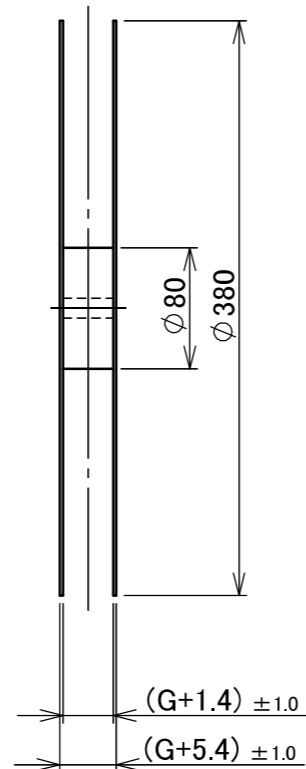
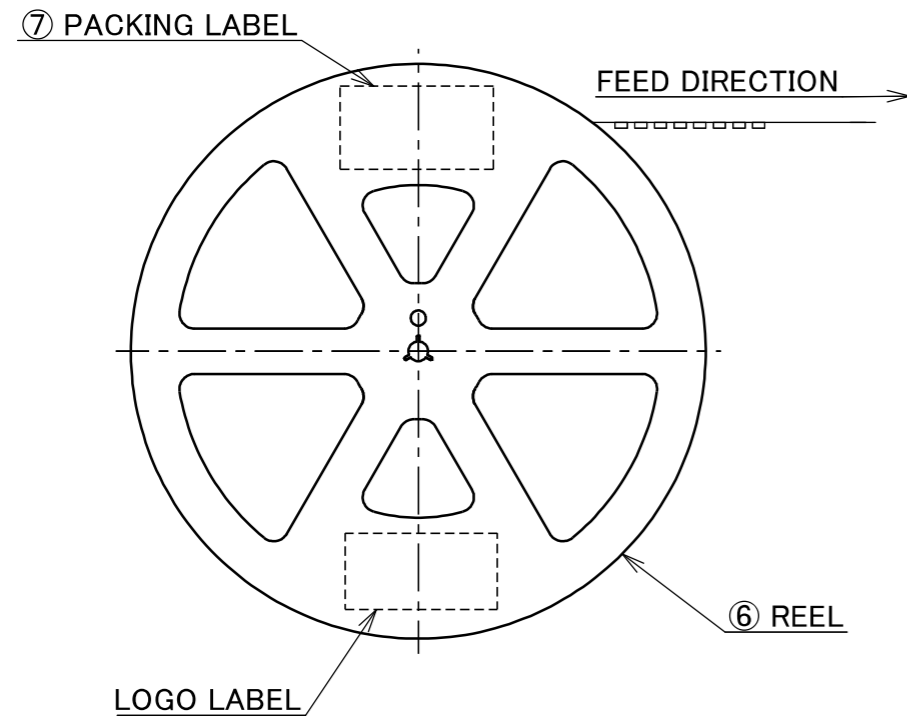
CONNECTOR ON RECOMMENDED FOOTPRINT PATTERN



REFLOW TEMPERATURE PROFILE
 SENJU METAL INDUSTRY CO., LTD. : M705-SHF(Sn96.5 Ag3.0 Cu0.5)

ANGLE	±2°	6 OVER 30 MAX.	±0.3	PROJECTION 	SERIES No. R2	CUSTOMER COPY		
6 MAX.	±0.2	30 OVER 120 MAX.	±0.5					
GENERAL TOLERANCE.				TITLE NOVASTACK® 35-P RECEPTACLE ASSEMBLY	SCALE 10:1 UNIT mm			
DWG.	DATE							
CHK.								
APP.								
				DWG. No.	20709	SIZE	SHEET	REV.
						A3	4/5	16

PART NO.	Pos.	G	H	QTY. PER EMBOSS REEL (PIECES / REEL)	QTY. PER PACKING CARTON (REELS / CARTON)
20709-0**E-01	10~14P	12	5.5	20,000 / REEL	20,000 × 9 REELS = 180,000
	16~36P	16	7.5		20,000 × 7 REELS = 140,000
	38~70P	24	11.5		20,000 × 5 REELS = 100,000



- NOTES.
2. TAPING SPECIFICATION FOLLOWS JIS C 0806 (IEC 60286-3).
3. MAKE EMPTY SECTION OF LEADER AND END ON EACH END OF THE TAPE.
4. TOP TAPE SHALL NOT STICK OUT FROM EMBOSS TAPE.
5. TOP TAPE SHALL NOT COVER FEED HOLE.

NO.	DISCRIPTION	MATERIAL	FINISH , REMARKS
7	PACKING LABEL	-	-
6	REEL	PS	ANTI-STATIC TYPE BLACK
5	TOP TAPE	PET t=0.062 TRANSPARENCY	ANTI-STATIC TYPE
4	EMBOSS TAPE	TRANSPARENCY	ANTI-STATIC TYPE

NO.	DISCRIPTION	MATERIAL	FINISH , REMARKS
ANGLE	$\pm 2^\circ$ 6 OVER 30 MAX.	± 0.3	PROJECTION
6 MAX.	± 0.2 30 OVER 120 MAX.	± 0.5	
GENERAL TOLERANCE.		TITLE	SERIES No.
DWG.	DATE	NOVASTACK® 35-P RECEPTACLE ASSEMBLY	R2
CHK.			CUSTOMER COPY
APP.		DWG. No. 20709	SCALE 1:X UNIT mm
			SIZE SHEET REV. A3 5/5 16