

Recommended P/N 20708-0\*\*E-01

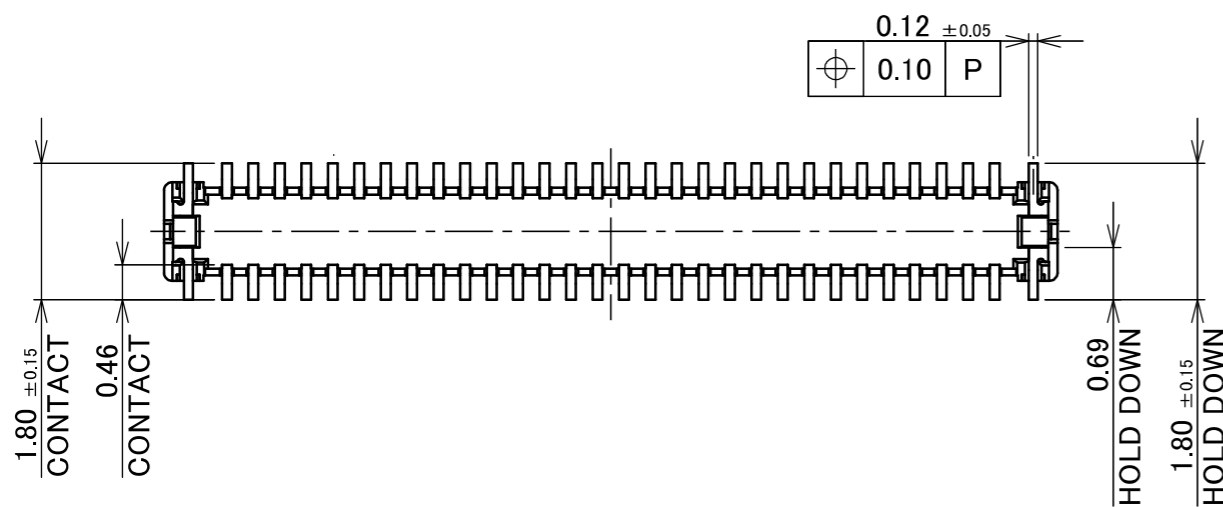
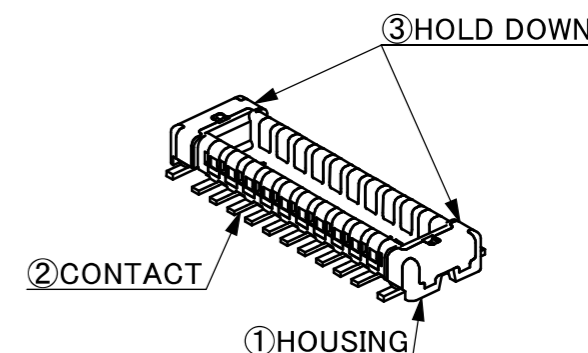
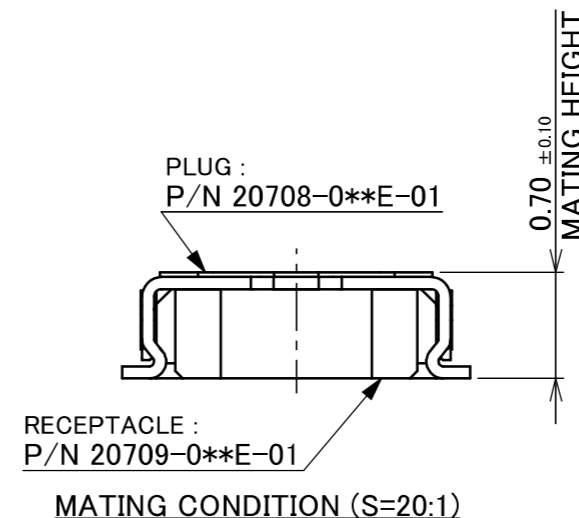
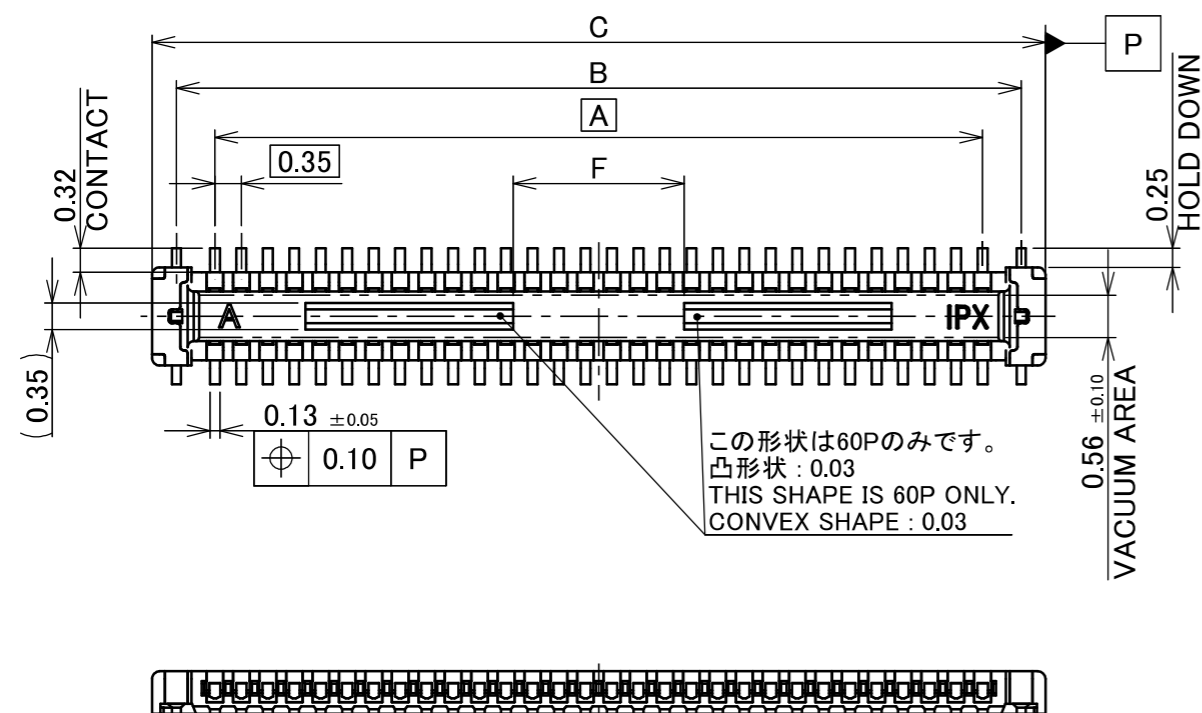
PART No.	Pos.	A	B	C	D	E	F
20708-010E-01	10	1.40	2.42	3.06	3.92	4.10	-
20708-014E-01	14	2.10	3.12	3.76	4.62	4.80	-
20708-016E-01	16	2.45	3.47	4.11	4.97	5.15	-
20708-018E-01	18	2.80	3.82	4.46	5.32	5.50	-
20708-020E-01	20	3.15	4.17	4.81	5.67	5.85	-
20708-024E-01	24	3.85	4.87	5.51	6.37	6.55	-
20708-030E-01	30	4.90	5.92	6.56	7.42	7.60	-
20708-034E-01	34	5.60	6.62	7.26	8.12	8.30	-
20708-040E-01	40	6.65	7.67	8.31	9.17	9.35	-
20708-050E-01	50	8.40	9.42	10.06	10.92	11.10	-
20708-060E-01	60	10.15	11.17	11.81	12.67	12.85	2.26



Halogen Free



RoHS Compliant



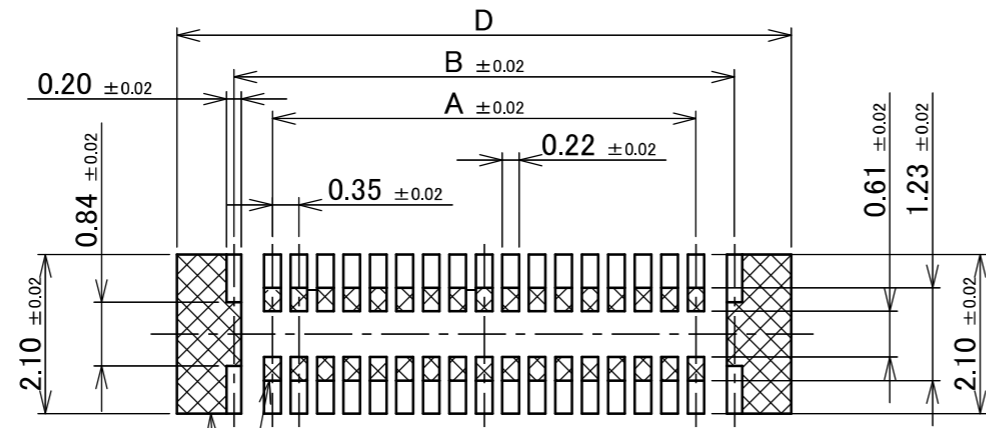
NO.	DISCRIPTION	MATERIAL	FINISH , REMARKS
3	HOLD DOWN	CORSON ALLOY	ALL OVER Ni 1.27 μm MIN. CONTACT PART Au 0.1 μm MIN. SOLDERING PART Au 0.01 μm MIN.
2	CONTACT	CORSON ALLOY	ALL OVER Ni 1.27 μm MIN. CONTACT PART Au 0.1 μm MIN. SOLDERING PART Au 0.01 μm MIN.
1	HOUSING	LCP	UL94V-0, BLACK

NO.	DISCRIPTION	MATERIAL	FINISH , REMARKS						
16	Z250241	Haji	2025/02/14	S.S	ANGLE ±2° 6 OVER 30 MAX. ±0.3	PROJECTION SERIES No. R1	CUSTOMER COPY		
15	Z241858	Haji	2024/12/24	S.S	6 MAX. ±0.2 30 OVER 120 MAX. ±0.5				
14	Z241236	Haji	2024/09/11	S.S	GENERAL TOLERANCE.		TITLE NOVASTACK® 35-P PLUG ASSEMBLY	SCALE	
13	Z220204	K.W	2022/02/28	Y.H	DWG. DATE	10:1		UNIT	
12	Z190514	R.S	2019/04/12	TAK	T.Hirakawa 2015/08/20				mm
11	Z180678	R.H	2018/05/28	TAK	CHK. T.Tagawa	SIZE SHEET		REV.	
REV.	ECN	BY	DATE	APP.	APP. E.Kawabe		DWG. No. 20708		A3

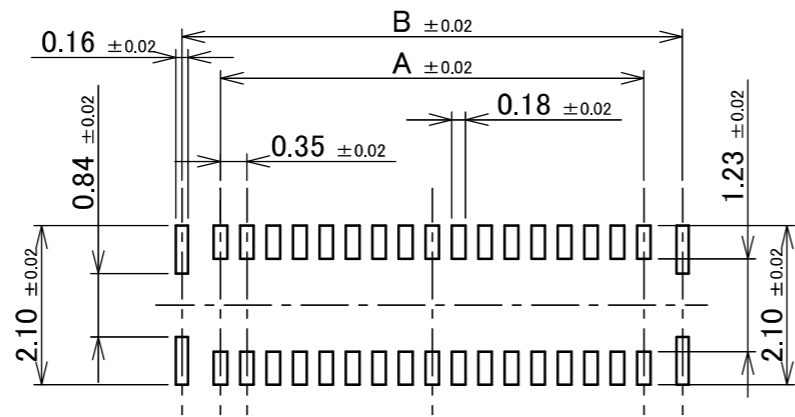
ITEMS	SPECIFICATION
APPLICABLE CONNECTOR PART No.	20709-0**E-01
RATING VOLTAGE	50V AC (r.m.s) / DC
RATING AMPERAGE (FOR SIGNAL CONTACT)	0.3A AC/DC (PER CONTACT PIN), 12.0A AC/DC(TOTAL) 1.0A AC/DC (PER CONTACT OF UP TO 8 PINS)
RATING AMPERAGE (FOR POWER CONTACT)	2.0A AC/DC (PER A CONTACT)/ 4.0A AC/DC(TOTAL)
OPERATING TEMPERATURE	233~358K(-40°C~+85°C)
OPERATING HUMIDITY	85% MAX.(NON-CONDENSING)
CONTACT RESISTANCE (FOR SIGNAL CONTACT)	INITIAL : 30mohm MAX. / AFTER TEST : $\triangleleft$ 20mohm MAX.
CONTACT RESISTANCE (FOR POWER CONTACT)	INITIAL : 30mohm MAX. / AFTER TEST : $\triangleleft$ 20mohm MAX.
INSULATION RESISTANCE	INITIAL : 1,000Mohm MIN. / AFTER TEST : 500Mohm MIN.
DIELECTRIC WITHSTANDING VOLTAGE	AC200V 1min
DURABILITY	20 CYCLES
MATING FORCE (INITIAL)	~28P 2.0 N/Pin MAX. 30P~ 1.0 N/Pin MAX.
UNMATING FORCE (AFTER TEST)	~28P 0.30 N/Pin MIN. 30P~ 0.15 N/Pin MIN.
COPLANARITY	0.08 MAX.
PRODUCT SPECIFICATION	PRS-2334
TEST REPORT	TR-16143
PACKING STANDARD	PST-15076
INSTRUCTION MANUAL	HIM-15014
APPEARANCE CRITERIA No.	QLS-A***

ANGLE	$\pm 2^\circ$	6 OVER 30 MAX.	$\pm 0.3$	PROJECTION 	SERIES No. R1	CUSTOMER COPY		
6 MAX.	$\pm 0.2$	30 OVER 120 MAX.	$\pm 0.5$					
GENERAL TOLERANCE.				TITLE NOVASTACK® 35-P PLUG ASSEMBLY	SCALE 	I-PEX		
DWG.	DATE							
CHK.								
APP.								
				DWG. No.	20708	SIZE A3	SHEET 2/5	REV. 16



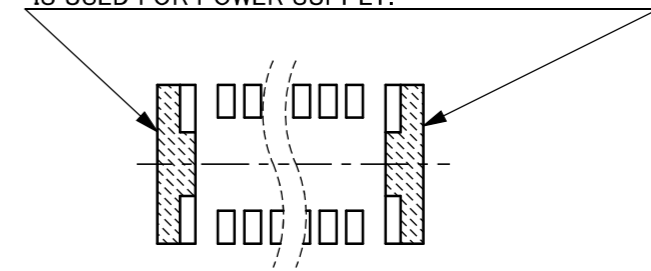
半田上がり防止の為、半田付けをしないで下さい。  
 パターンを設けるときは、レジストもしくはカバーレイを設けて下さい。  
 MUST BE NOT SOLDERING AREA FOR PREVENT FROM SOLDER WICKING.  
 MUST BE COVER LAY OR RESIST COATING ON THE PATTERN.

RECOMMENDED PATTERN LAYOUT

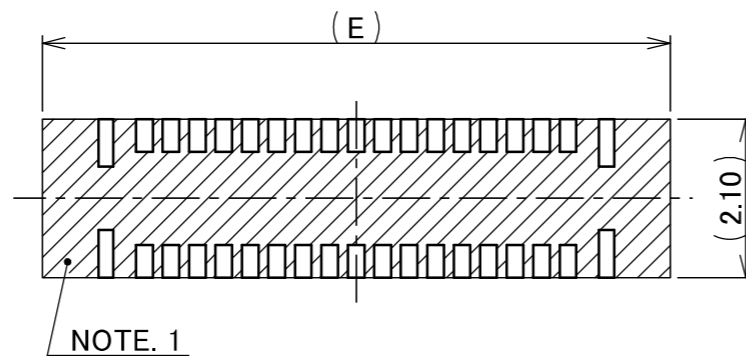


RECOMMENDED METAL MASK LAYOUT  
 THICKNESS : 0.10 mm

ホールダウンを電源用としてご使用の場合は、  
 両パットを図のように繋げて下さい。  
 PAD IS CONNECTED LIKE FIGURE WHEN HOLD DOWN  
 IS USED FOR POWER SUPPLY.



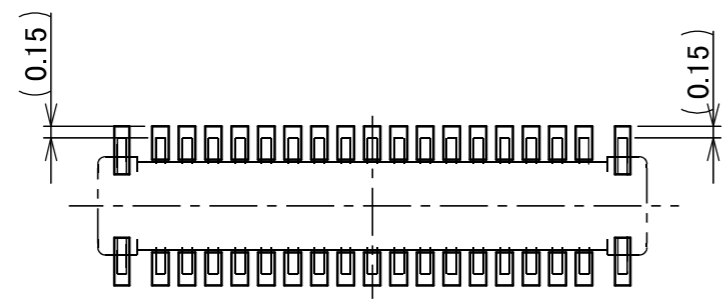
HOLD DOWN PAD LAYOUT  
 USED FOR POWER SUPPLY.



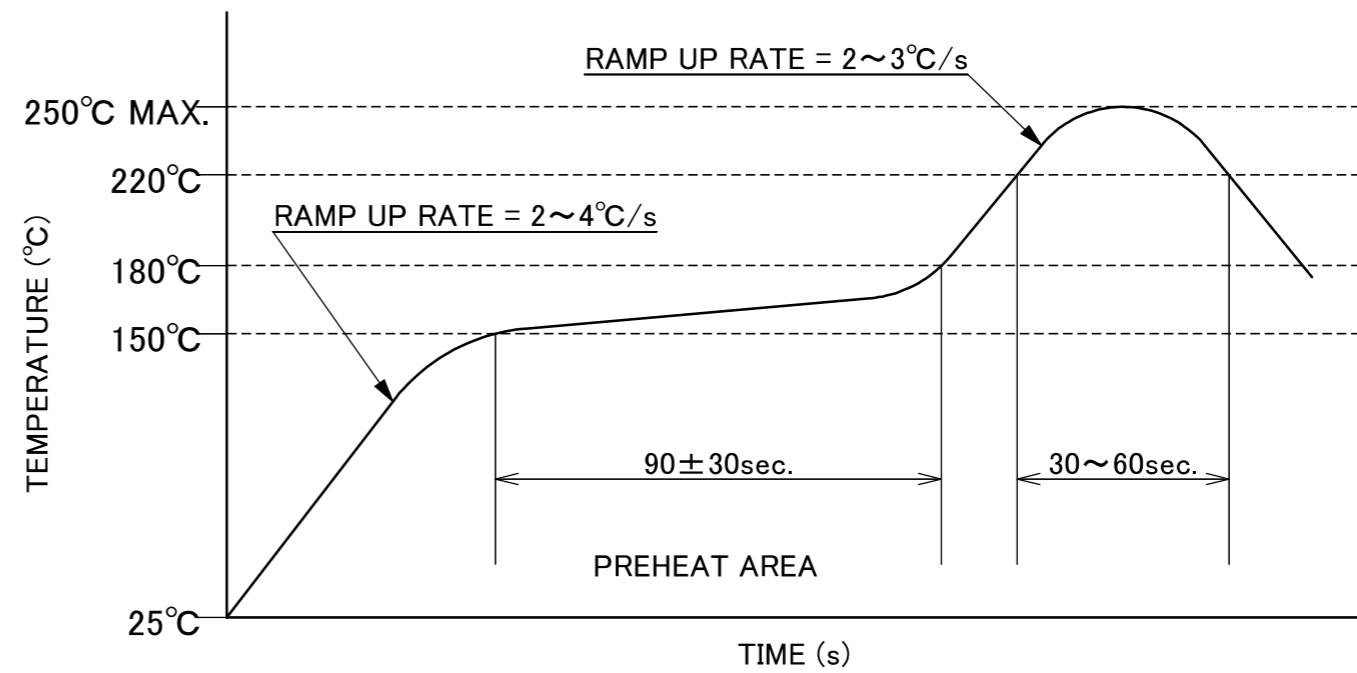
NOTE. 1

NOTES.  
 1. THIS AREA CANNOT MOUNT ANOTHER COMPONENTS.

ANGLE	±2°	6 OVER 30 MAX.	±0.3	PROJECTION 	SERIES No. R1	CUSTOMER COPY			
6 MAX.	±0.2	30 OVER 120 MAX.	±0.5						
GENERAL TOLERANCE.				TITLE		SCALE			
DWG.	DATE			NOVASTACK® 35-P PLUG ASSEMBLY		10:1			
CHK.						UNIT mm			
APP.				DWG. No.	20708	SIZE A3	SHEET 3/5	REV. 16	



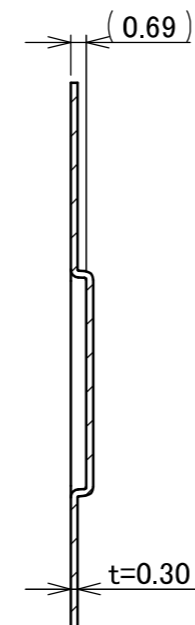
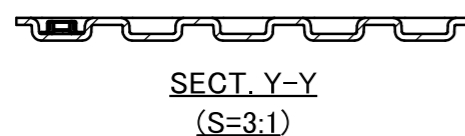
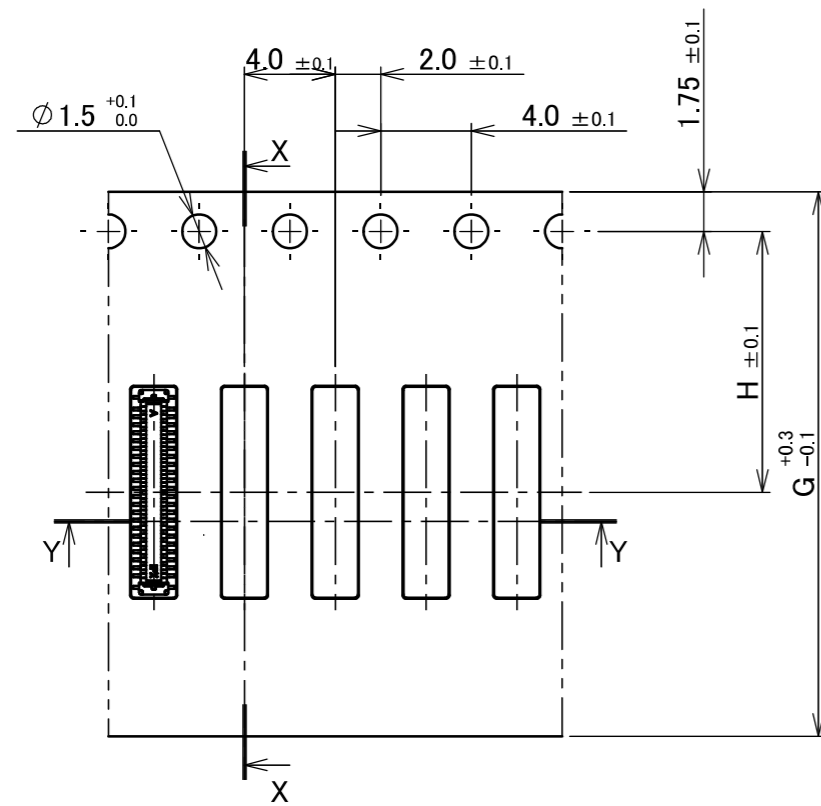
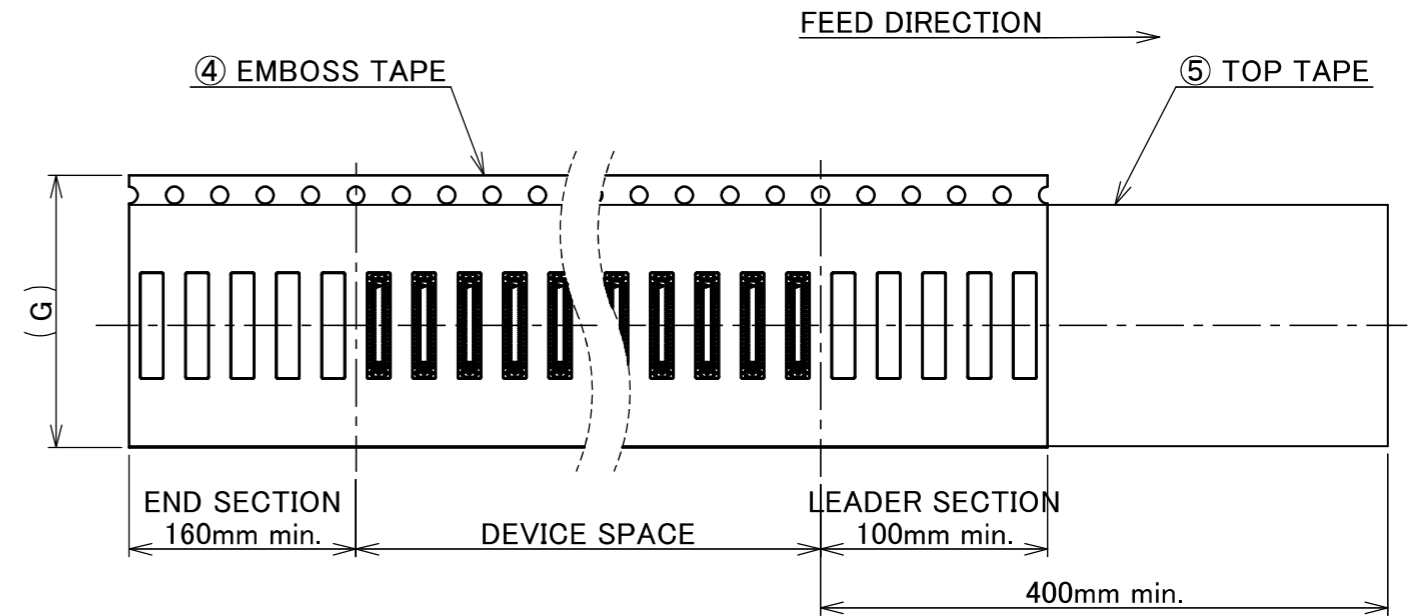
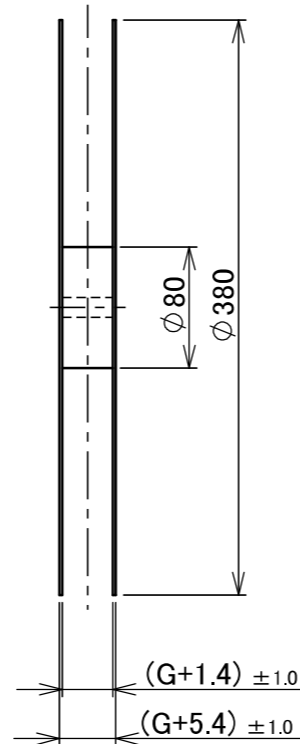
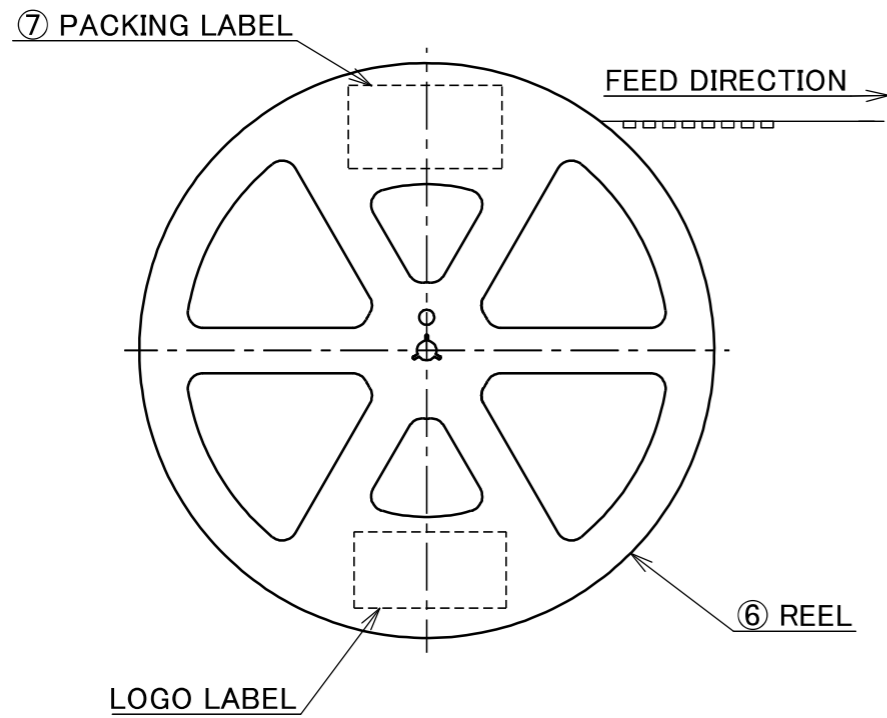
CONNECTOR ON RECOMMENDED FOOTPRINT PATTERN



REFLOW TEMPERATURE PROFILE  
 SENJU METAL INDUSTRY CO., LTD. : M705-SHF(Sn96.5 Ag3.0 Cu0.5)

ANGLE	±2°	6 OVER 30 MAX.	±0.3	PROJECTION 	SERIES No. R1	CUSTOMER COPY		
6 MAX.	±0.2	30 OVER 120 MAX.	±0.5					
GENERAL TOLERANCE.				TITLE NOVASTACK® 35-P PLUG ASSEMBLY	SCALE 10:1	UNIT <b>I-PEX</b>		
DWG.	DATE							
CHK.								
APP.								
				DWG. No.	20708	SIZE A3	SHEET 4/5	REV. 16

PART NO.	Pos.	G	H	QTY. PER EMBOSS REEL (PIECES / REEL)	QTY. PER PACKING CARTON (REELS / CARTON)
20708-0**E-01	10~14P	12	5.5	20,000 / REEL	20,000 × 9 REELS = 180,000
	16~38P	16	7.5		20,000 × 7 REELS = 140,000
	40~70P	24	11.5		20,000 × 5 REELS = 100,000



- NOTES.
- TAPING SPECIFICATION FOLLOWS JIS C 0806 (IEC 60286-3).
  - MAKE EMPTY SECTION OF LEADER AND END ON EACH END OF THE TAPE.
  - TOP TAPE SHALL NOT STICK OUT FROM EMBOSS TAPE.
  - TOP TAPE SHALL NOT COVER FEED HOLE.

NO.	DISCRIPTION	MATERIAL	FINISH , REMARKS
7	PACKING LABEL	-	-
6	REEL	PS	ANTI-STATIC TYPE BLACK
5	TOP TAPE	PET t=0.062 TRANSPARENCY	ANTI-STATIC TYPE
4	EMBOSS TAPE	TRANSPARENCY	ANTI-STATIC TYPE

NO.	DISCRIPTION	MATERIAL	FINISH , REMARKS
ANGLE	$\pm 2^\circ$	6 OVER 30 MAX.	$\pm 0.3$
6 MAX.	$\pm 0.2$	30 OVER 120 MAX.	$\pm 0.5$

PROJECTION	SERIES No.	CUSTOMER COPY
	R1	

GENERAL TOLERANCE.	TITLE	SCALE
DWG. DATE	NOVASTACK® 35-P PLUG ASSEMBLY	1:X
CHK.		UNIT
APP.	DWG. No. 20708	mm
		SIZE SHEET REV.
		A3 5/5 16