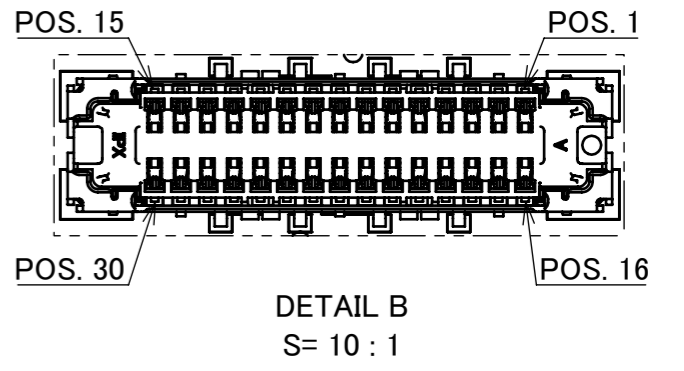
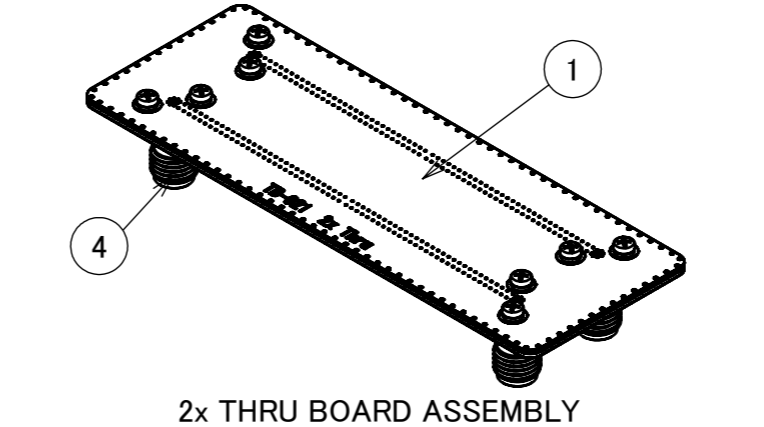
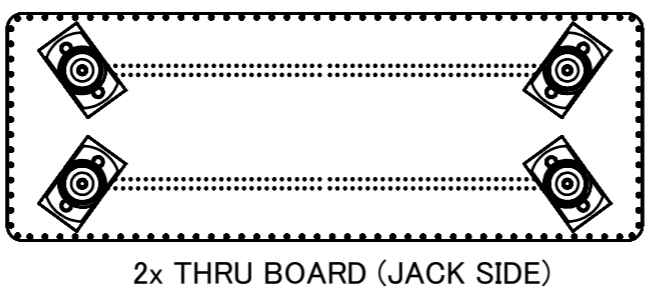
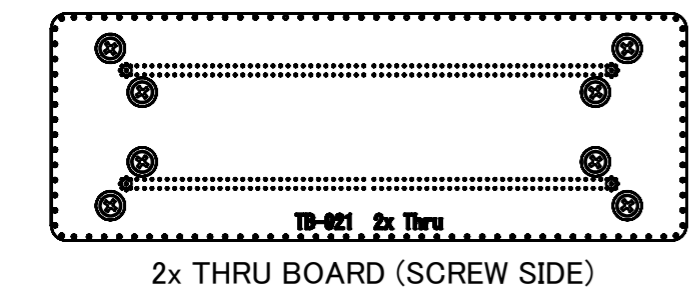
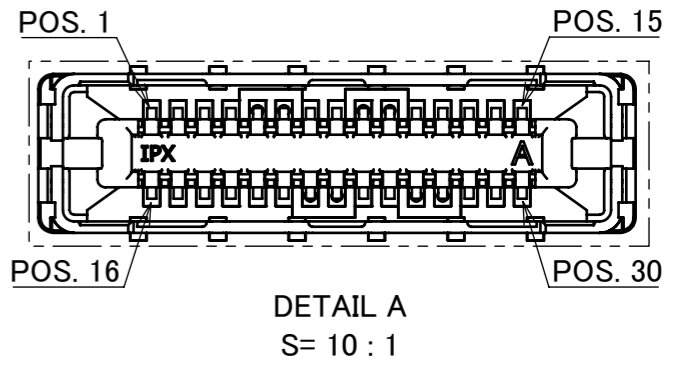
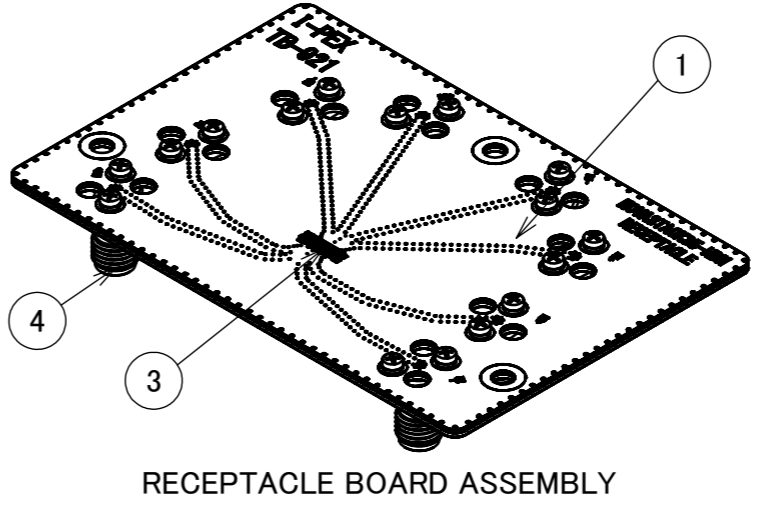
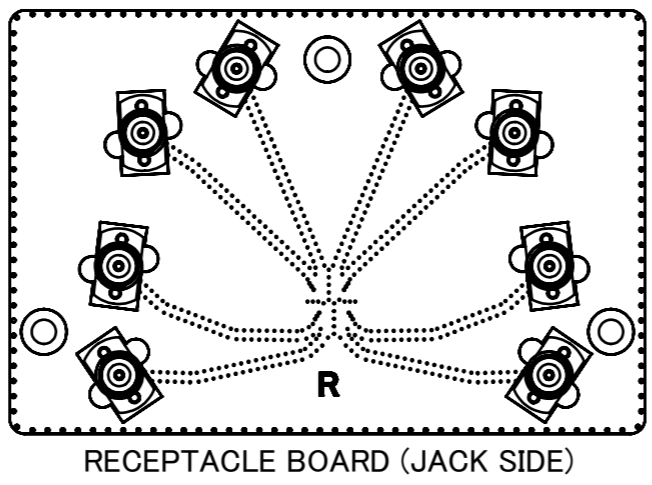
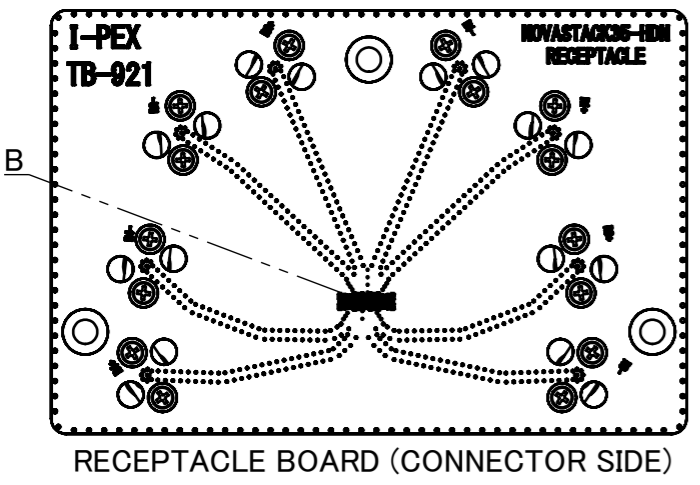
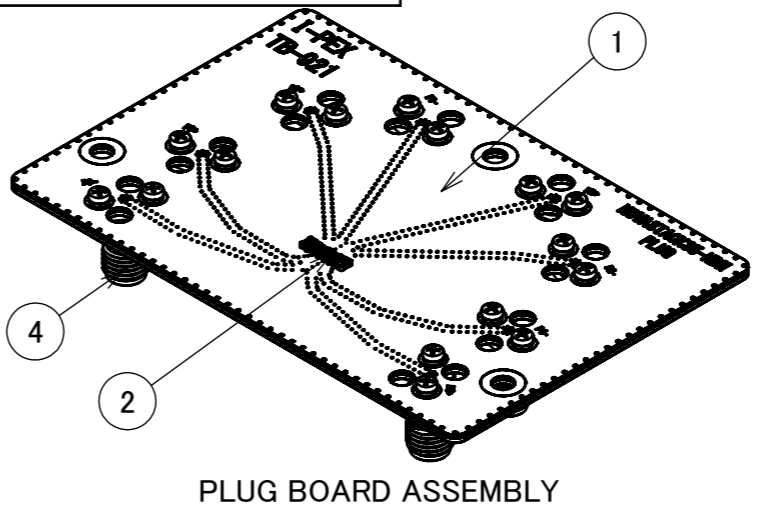
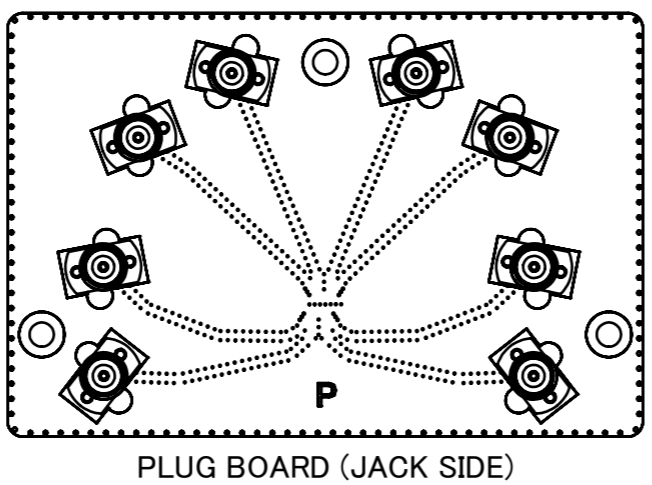
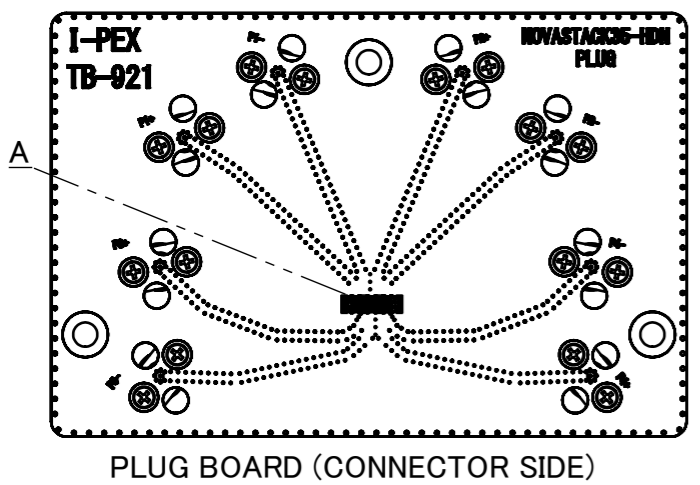


PART No.	STRUCTURE
91601-030B-001	PLUG BOARD ASSEMBLY: 1PC., RECEPTACLE BOARD ASSEMBLY: 1PC., 2x THRU BOARD ASSEMBLY: 1PC.

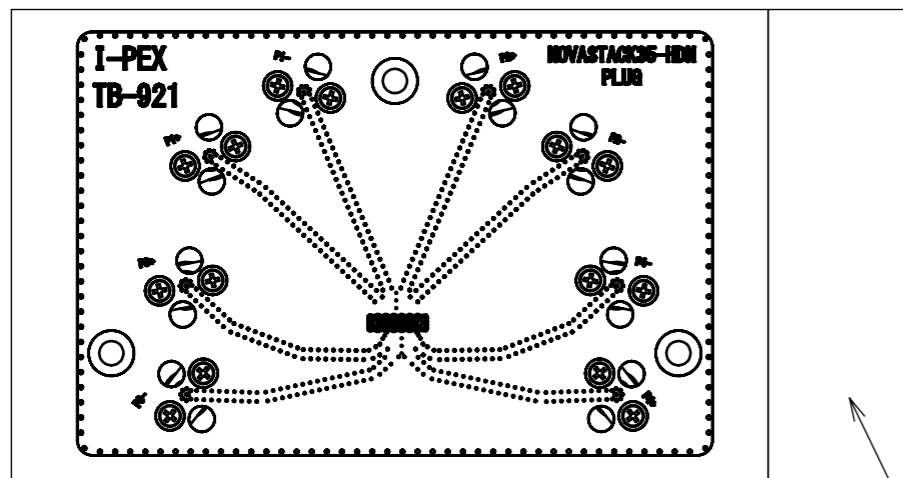
PLUG & RECEPTACLE BOARD			
PIN POS.	ASSIGNMENT		PIN POS.
1	GND	GND	16
2	GND	GND	17
3	GND	GND	18
4	GND	GND	19
5	S1	GND	20
6	S2	GND	21
7	GND	S5	22
8	GND	S6	23
9	S3	GND	24
10	S4	GND	25
11	GND	S7	26
12	GND	S8	27
13	GND	GND	28
14	GND	GND	29
15	GND	GND	30



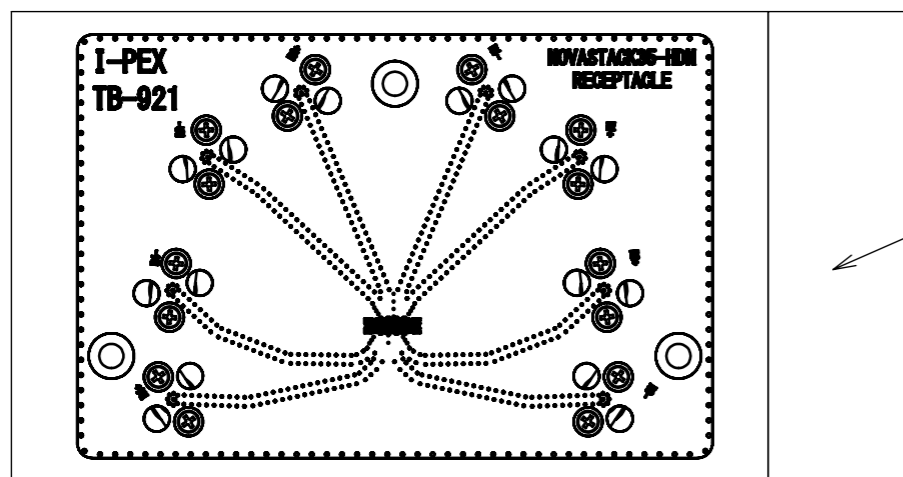
NO.	DESCRIPTION	PARTS NO.	QTY	REMARK
4	2.92mm CONNECTOR	50104-J001	20	JACK
3	RECEPTACLE CONNECTOR	20865-030E-03	1	NOVASTACK 35-HDN RECEPTACLE ASSEMBLY 30P
2	PLUG CONNECTOR	20864-030E-01	1	NOVASTACK 35-HDN PLUG ASSEMBLY 30P
1	TEST BOARD	TB-921	1	THICKNESS: (1.125mm), PLUG/RECEPTACLE/THRU BOARD EACH 1PC.

- NOTES.
- FOR DETAILED INFORMATION ON THE STRUCTURE OF TEST BOARD TB-921, REFER TO REPORT #IER-001-10718.
 - CHARACTERISTIC IMPEDANCE: 50 Ω (SINGLE-ENDED).
 - MAXIMUM MEASUREMENT FREQUENCY: 40GHz
 - OTHER PIN CONFIGURATIONS CAN BE PROVIDED UPON REQUEST.

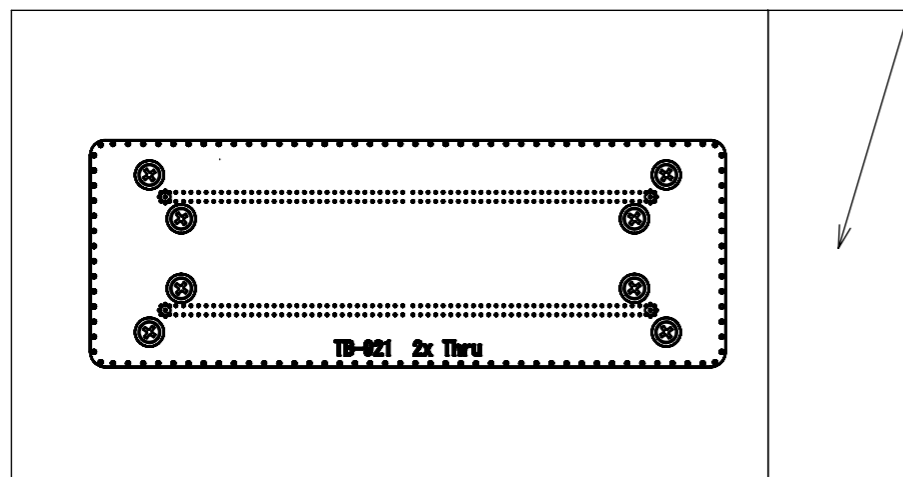
ANGLE		±2°	6 OVER 30 MAX.	±0.3	PROJECTION	SERIES No. R0R2R3R0	TITLE NOVASTACK® 35-HDN SI TEST BOARD ASSEMBLY	SCALE 1:1	UNIT mm	SHEET 1/2	REV. 0
6 MAX.		±0.2	30 OVER 120 MAX.	±0.5							
GENERAL TOLERANCE.								DWG. No. 91601	SIZE A3	SHEET 1/2	REV. 0
DWG.		DATE		CHK.		APP.					
S.Motomura		2024/08/30		-		S.Suzuki					
0		Z241163 Moto		2024/08/30							
REV.	ECN	BY	DATE	APP.							
REVISION RECORD											



PLUG BOARD



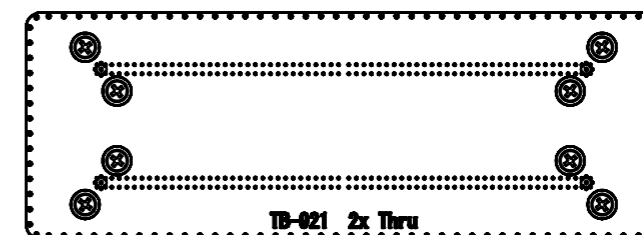
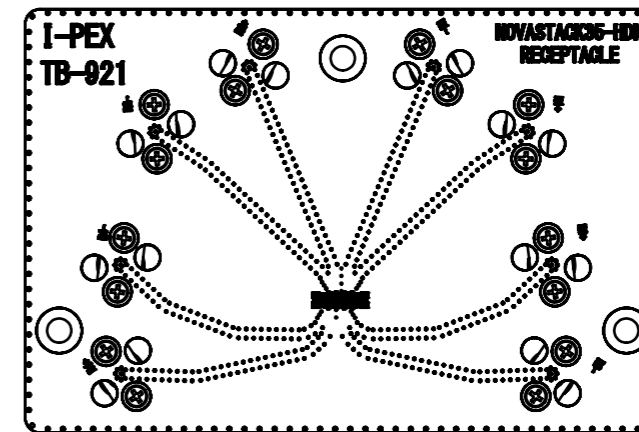
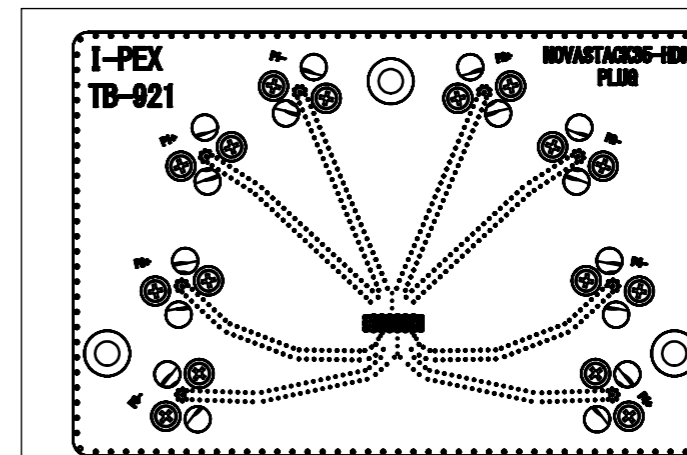
RECEPTACLE BOARD



2x THRU BOARD

<LARGE BAG>
REUSABLE PLASTIC BAG

<SMALL BAG>
REUSABLE PLASTIC BAG



PACKING STYLE

ANGLE	±2°	6 OVER 30 MAX.	±0.3	PROJECTION	SERIES No.	CUSTOMER COPY
6 MAX.	±0.2	30 OVER 120 MAX.	±0.5		R0R2R3R0	
GENERAL TOLERANCE.				TITLE	SCALE	I-PEX
DWG.	DATE			NOVASTACK® 35-HDN SI TEST BOARD ASSEMBLY	1:1	
CHK.					UNIT	
APP.				DWG. No.	mm	SIZE
				91601	A3	SHEET
						2/2
						REV.
						0