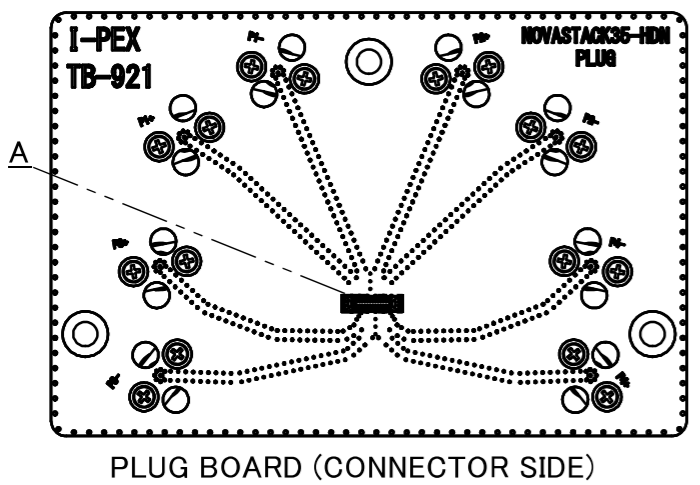
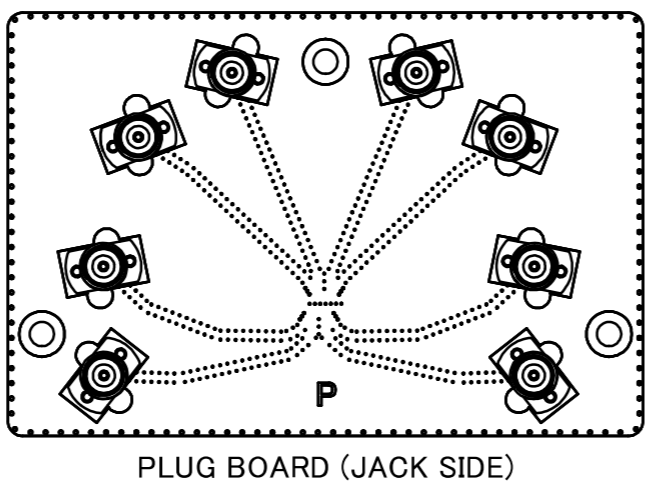


| PART No. | STRUCTURE |
|----------------|------------------------------------------------------------------------------------------|
| 91601-030B-001 | PLUG BOARD ASSEMBLY: 1PC., RECEPTACLE BOARD ASSEMBLY: 1PC., 2x THRU BOARD ASSEMBLY: 1PC. |

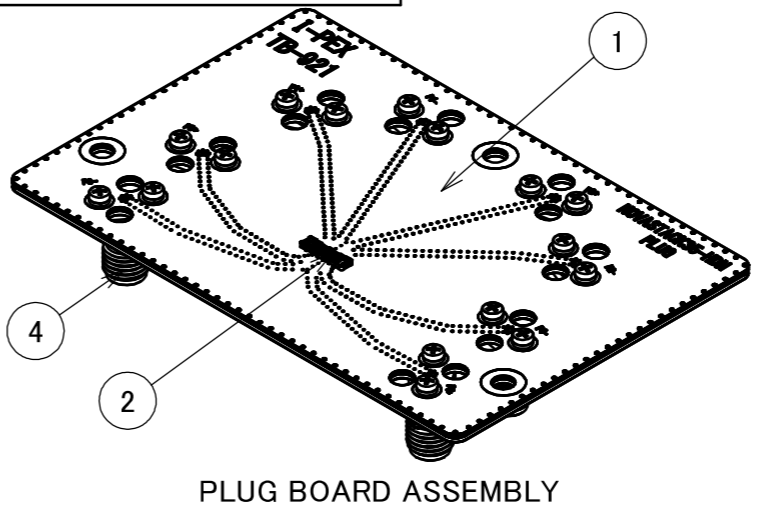
| PLUG & RECEPTACLE BOARD | | | |
|-------------------------|------------|-----|----------|
| PIN POS. | ASSIGNMENT | | PIN POS. |
| 1 | GND | GND | 16 |
| 2 | GND | GND | 17 |
| 3 | GND | GND | 18 |
| 4 | GND | GND | 19 |
| 5 | S1 | GND | 20 |
| 6 | S2 | GND | 21 |
| 7 | GND | S5 | 22 |
| 8 | GND | S6 | 23 |
| 9 | S3 | GND | 24 |
| 10 | S4 | GND | 25 |
| 11 | GND | S7 | 26 |
| 12 | GND | S8 | 27 |
| 13 | GND | GND | 28 |
| 14 | GND | GND | 29 |
| 15 | GND | GND | 30 |



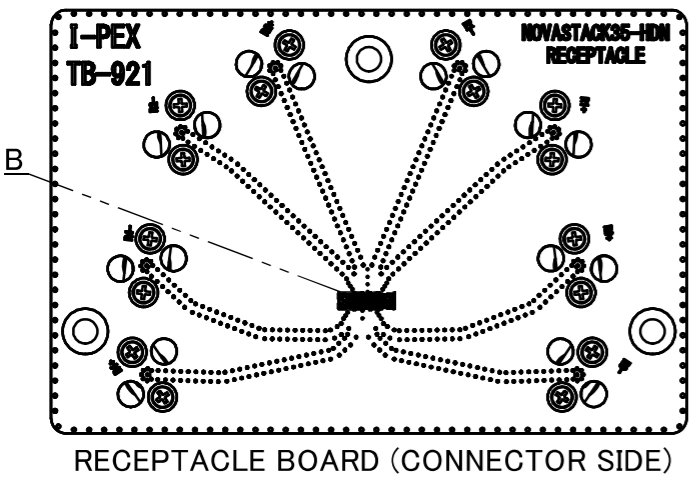
PLUG BOARD (CONNECTOR SIDE)



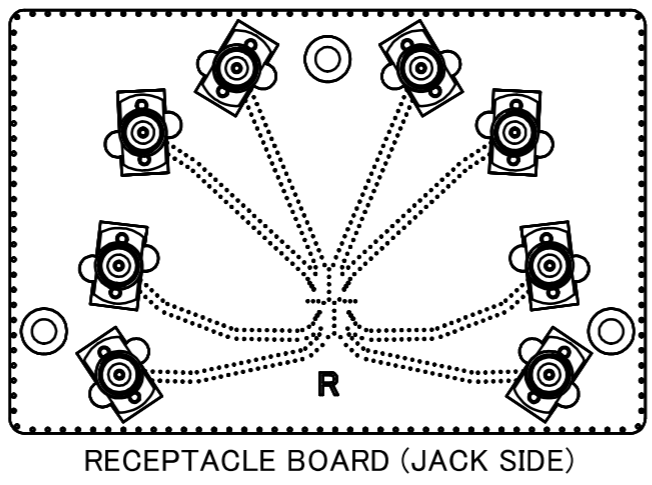
PLUG BOARD (JACK SIDE)



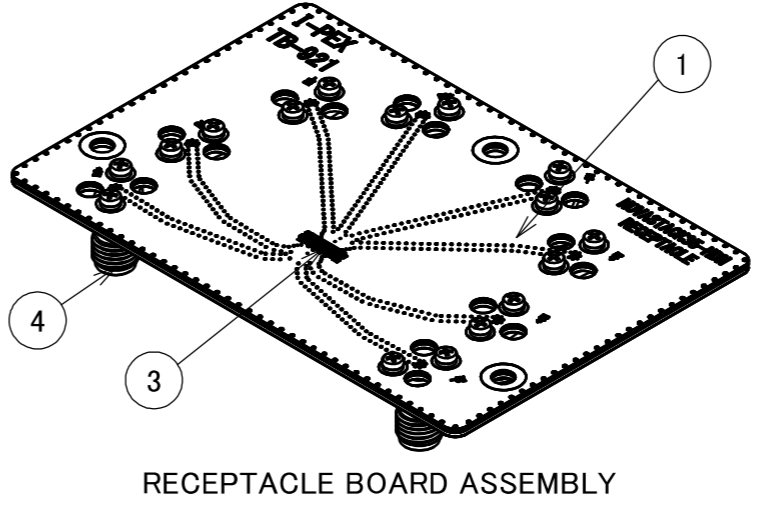
PLUG BOARD ASSEMBLY



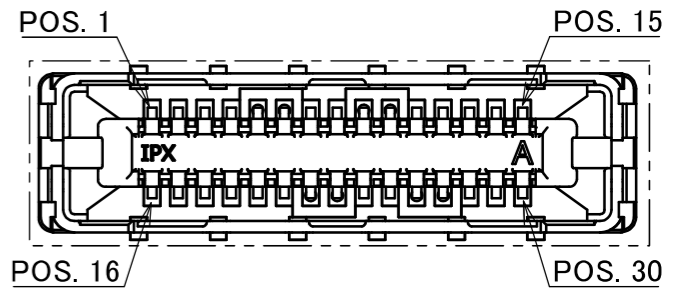
RECEPTACLE BOARD (CONNECTOR SIDE)



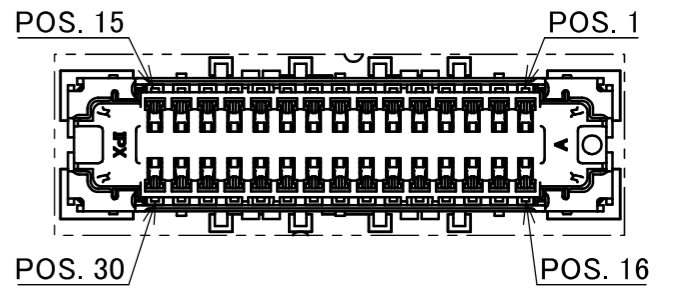
RECEPTACLE BOARD (JACK SIDE)



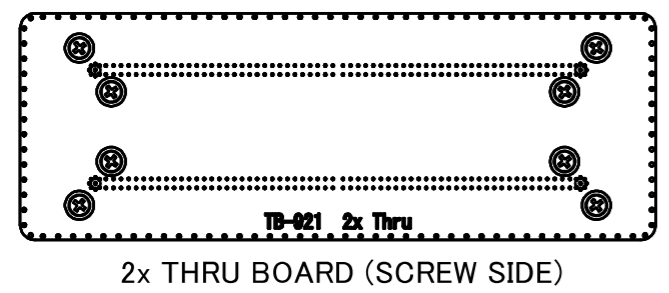
RECEPTACLE BOARD ASSEMBLY



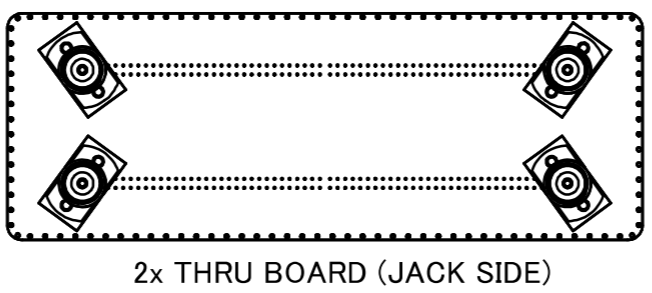
DETAIL A
S= 10 : 1



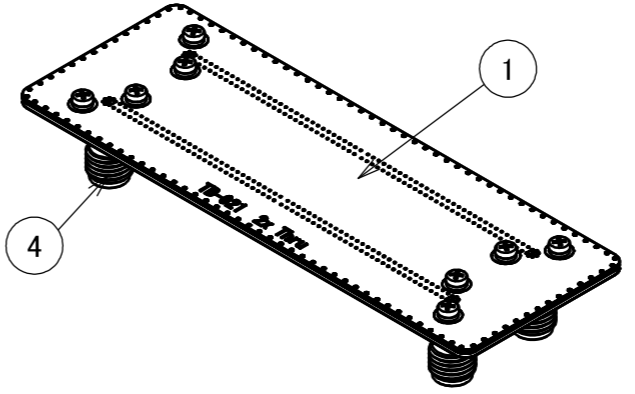
DETAIL B
S= 10 : 1



2x THRU BOARD (SCREW SIDE)



2x THRU BOARD (JACK SIDE)

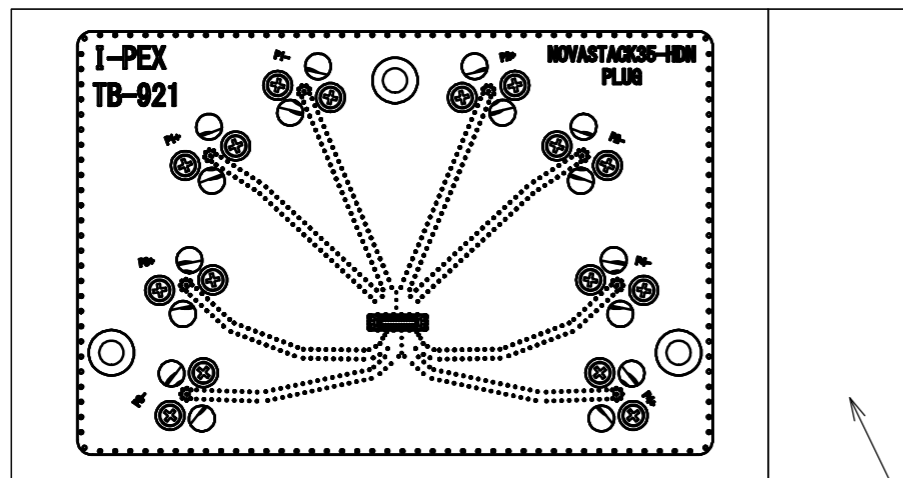


2x THRU BOARD ASSEMBLY

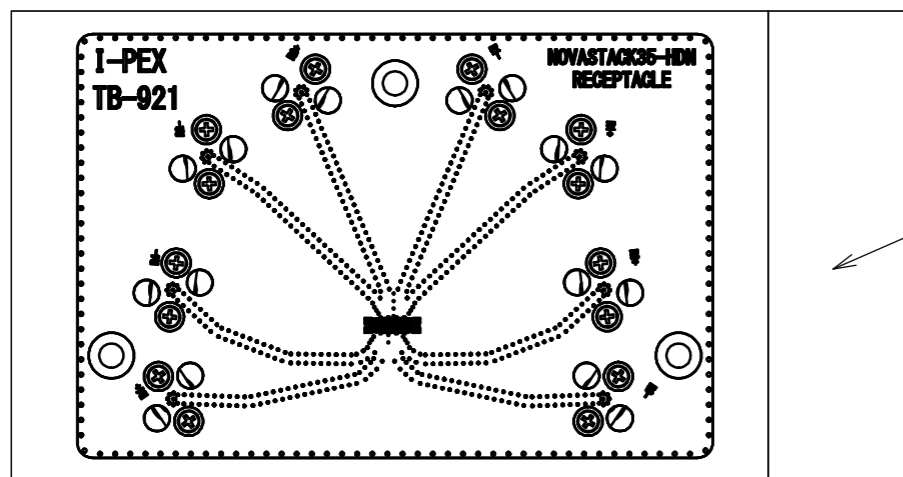
| NO. | DESCRIPTION | PARTS NO. | QTY | REMARK |
|-----|----------------------|---------------|-----|------------------------------------------------------------|
| 4 | 2.92mm CONNECTOR | 50104-J001 | 20 | JACK |
| 3 | RECEPTACLE CONNECTOR | 20865-030E-03 | 1 | NOVASTACK 35-HDN RECEPTACLE ASSEMBLY 30P |
| 2 | PLUG CONNECTOR | 20864-030E-01 | 1 | NOVASTACK 35-HDN PLUG ASSEMBLY 30P |
| 1 | TEST BOARD | TB-921 | 1 | THICKNESS: (1.125mm), PLUG/RECEPTACLE/THRU BOARD EACH 1PC. |

- NOTES.
- FOR DETAILED INFORMATION ON THE STRUCTURE OF TEST BOARD TB-921, REFER TO REPORT #IER-001-10718.
 - CHARACTERISTIC IMPEDANCE: 50 Ω (SINGLE-ENDED).
 - MAXIMUM MEASUREMENT FREQUENCY: 40GHz
 - OTHER PIN CONFIGURATIONS CAN BE PROVIDED UPON REQUEST.

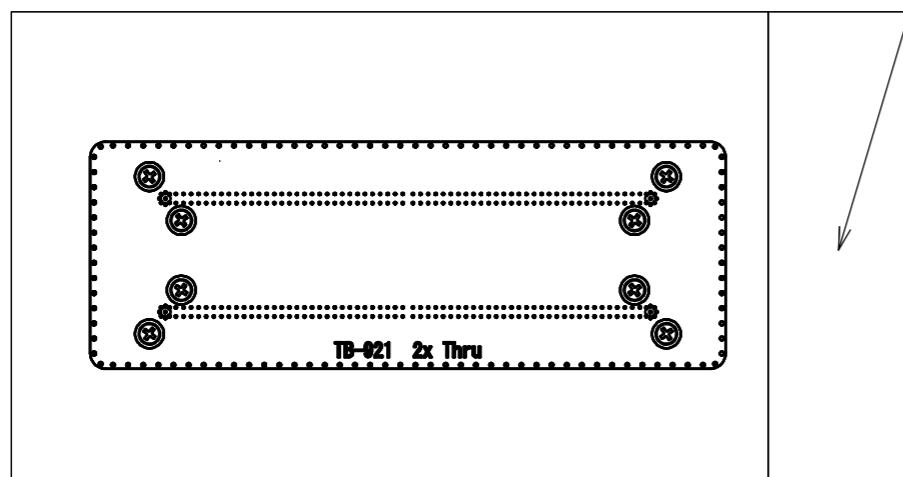
| | | | | | | | | | |
|--------------------|------------|--------|--------------------|------------------|---------------------------------------------------------|------------------------|---------------|--------------|-----------|
| ANGLE | | ±2° | 6 OVER 30 MAX. | ±0.3 | PROJECTION | SERIES No. R0R2R3R0 | CUSTOMER COPY | | |
| | | 6 MAX. | ±0.2 | 30 OVER 120 MAX. | | | | ±0.5 | |
| GENERAL TOLERANCE. | | | | | TITLE NOVASTACK® 35-HDN SI TEST BOARD ASSEMBLY | SCALE 1:1 | UNIT mm | SHEET 1/2 | REV. 0 |
| DWG. | S.Motomura | | DATE 2024/08/30 | | | | | | |
| CHK. | - | | | | DWG. No. | 91601 | | | |
| REV. | ECN | BY | DATE | APP. | S.Suzuki | | | | |
| REVISION RECORD | | | | | | | | | |



PLUG BOARD



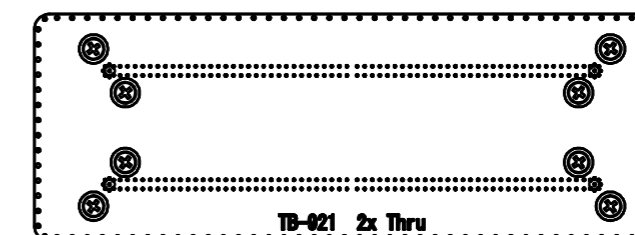
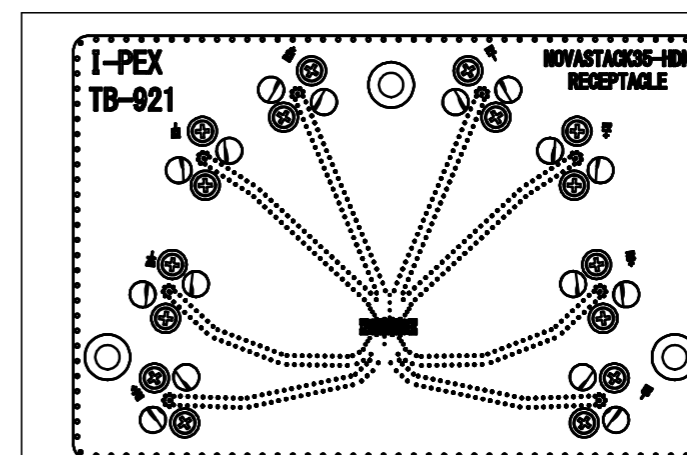
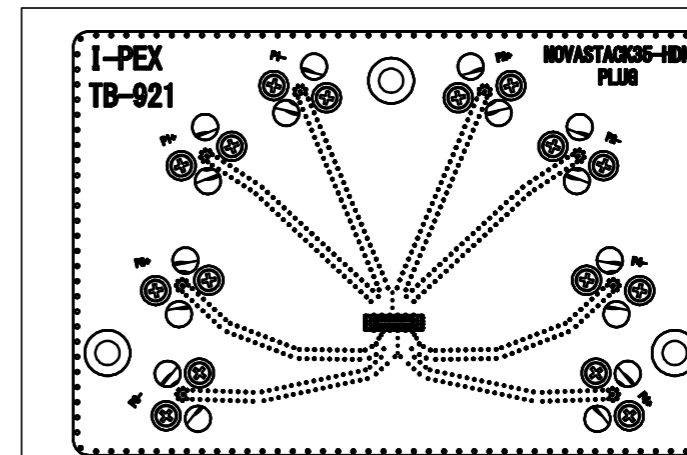
RECEPTACLE BOARD



2x THRU BOARD

<LARGE BAG>
REUSABLE PLASTIC BAG

<SMALL BAG>
REUSABLE PLASTIC BAG



PACKING STYLE

| | | | | | | | | |
|--------------------|--------|----------------|------------------|---------------------------------------------------------|------------------------|----------------------|--------------|-----------|
| ANGLE | ±2° | 6 OVER 30 MAX. | ±0.3 | PROJECTION | SERIES No. R0R2R3R0 | CUSTOMER COPY | | |
| | 6 MAX. | ±0.2 | 30 OVER 120 MAX. | | | | | ±0.5 |
| GENERAL TOLERANCE. | | | | TITLE NOVASTACK® 35-HDN SI TEST BOARD ASSEMBLY | SCALE 1:1 | UNIT I-PEX | | |
| DWG. | DATE | | | | | | | |
| CHK. | | | | | | | | |
| APP. | | | | | | | | |
| | | | | DWG. No. | 91601 | SIZE A3 | SHEET 2/2 | REV. 0 |