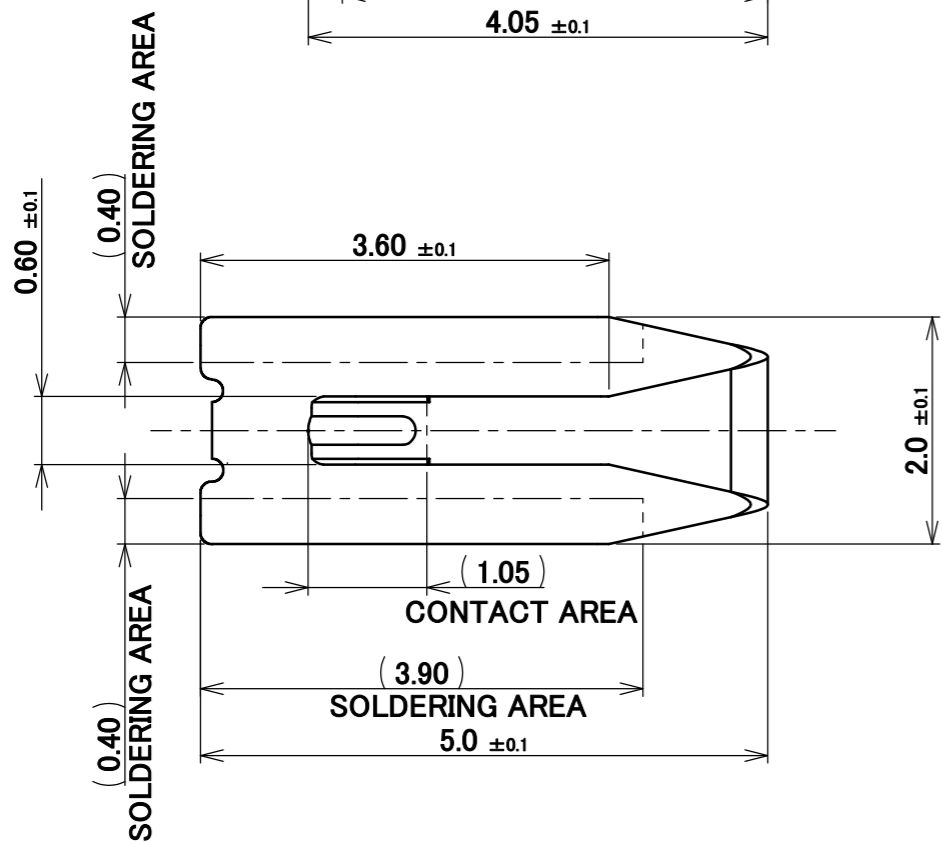
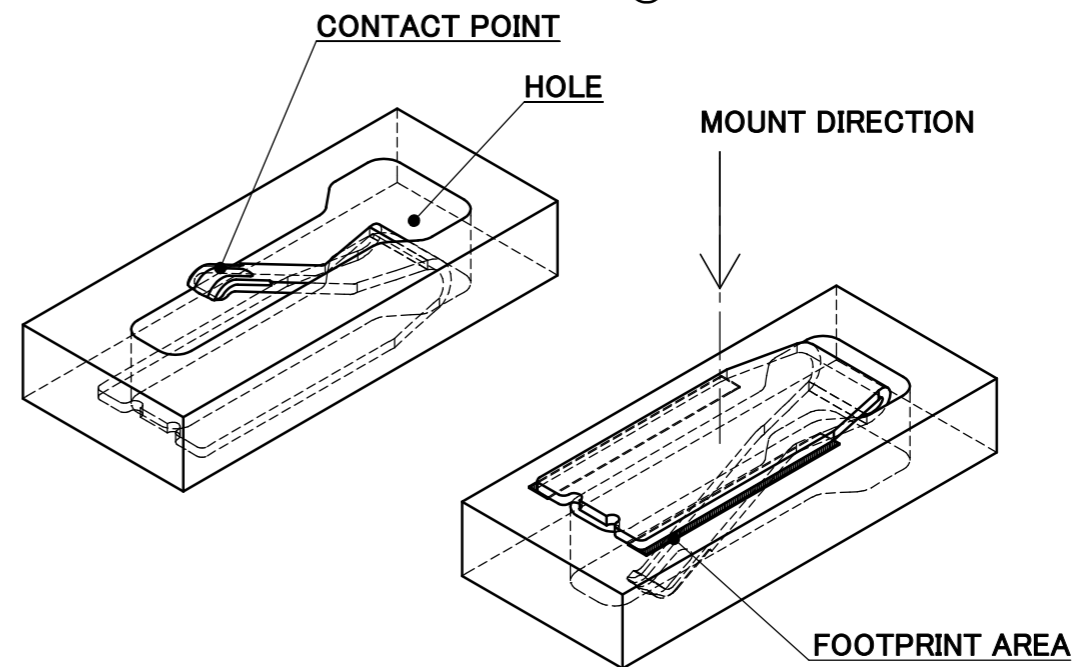
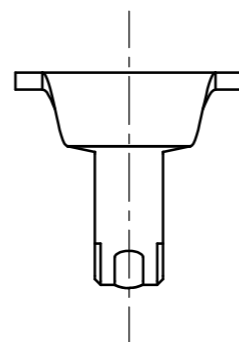
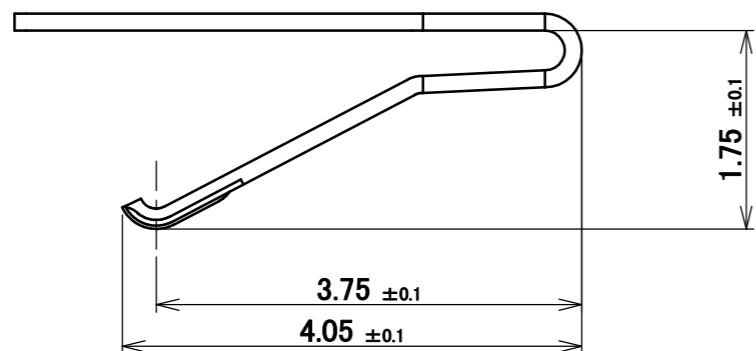
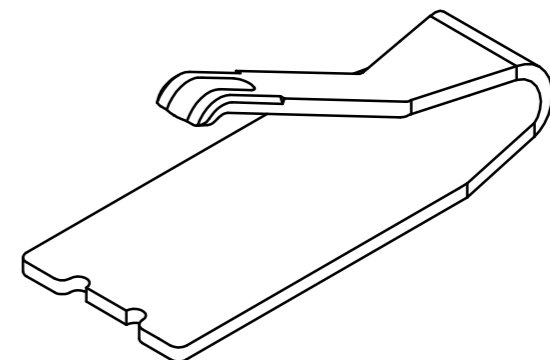
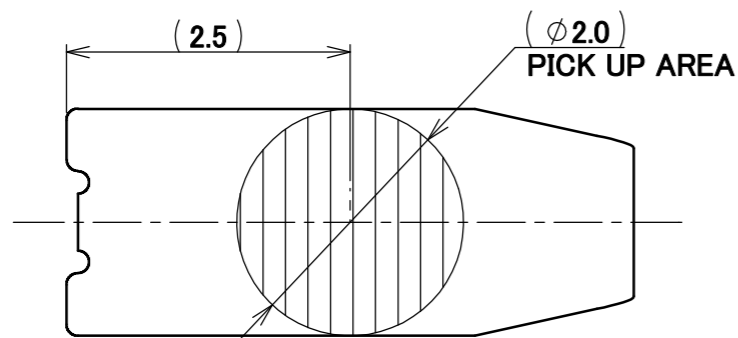


PART NO.

3112-0001



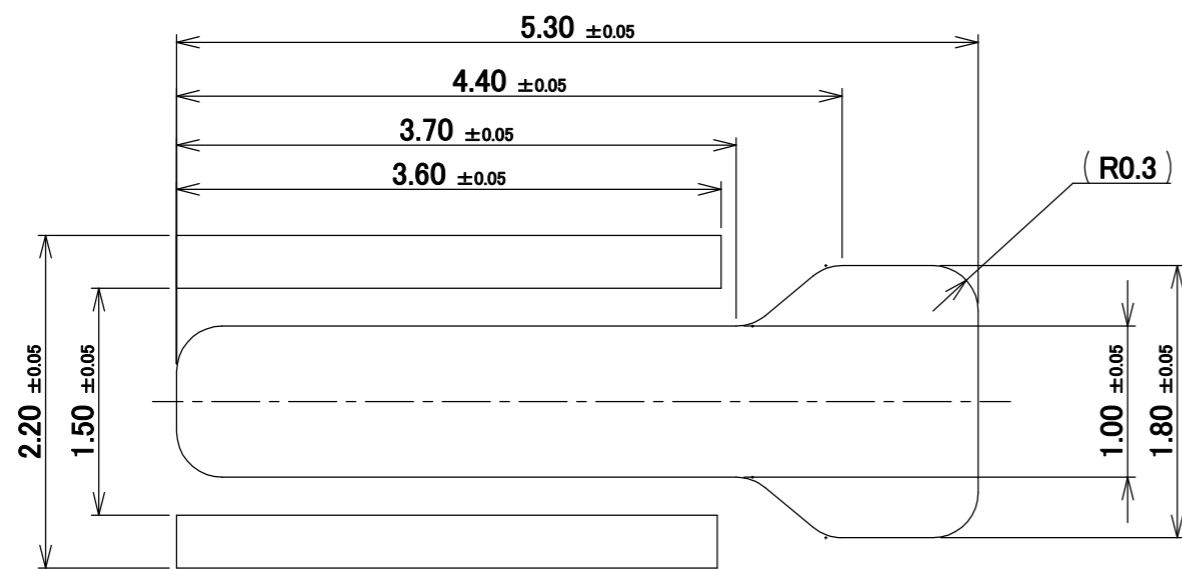
NOTES.
1.WORKING HEIGHT=1.05±0.2
2.BOARD THICKNESS=1.25 MAX.

| NO. | DISCRIPTION | MATERIAL | FINISH , REMARKS |
|-----|-------------|--------------------------|--|
| 1 | CONNECTOR | PHOSPHOR BRONZE T=0.15mm | UNDER PLATE Ni 1.27 μ m MIN. CONTACT AREA Au 0.1 μ m MIN. |

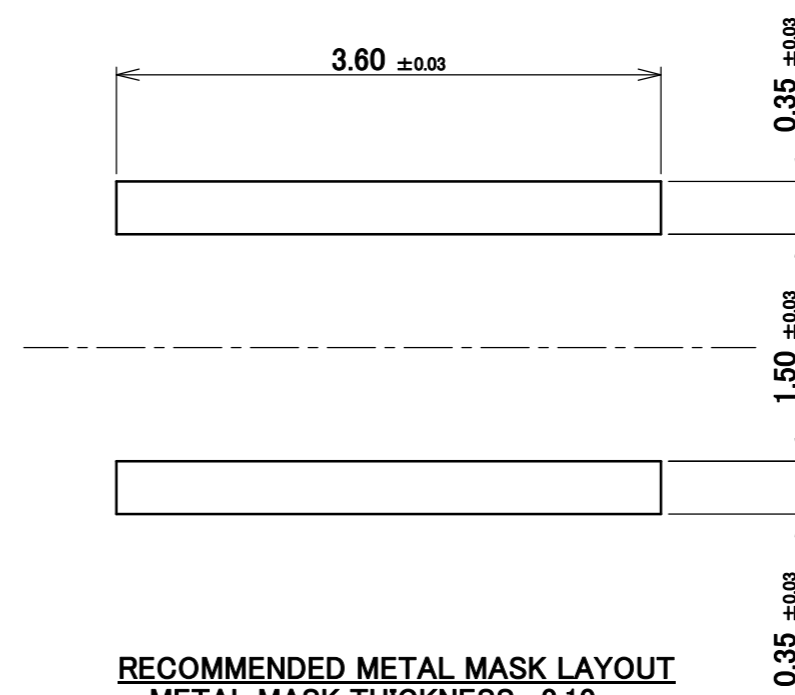
| REV. | ECN | BY | DATE | APP. | ANGLE | ±2° | 6 OVER 30 MAX. | ±0.3 | PROJECTION | SERIES No. | CUSTOMER COPY | | |
|-----------------|---------|-----|--------------|------|--------------------|-------------|------------------|------------|------------|------------|---------------|------|---|
| 4 | Z190764 | SEI | June/07/'19 | Y.S | 6 MAX. | ±0.2 | 30 OVER 120 MAX. | ±0.5 | MP-S03 | R0 | SCALE | | |
| 3 | Z181244 | SEI | Sept./21/'18 | TAK | GENERAL TOLERANCE. | | | TITLE | | | 15:1 | | |
| 2 | Z180677 | SEI | May/28/'18 | TAK | DWG. | T.Yayoshi | DATE | 2014/12/16 | MP-S03 | R0 | UNIT | | |
| 1 | Z161336 | Y.O | Oct./27/'16 | TAK | CHK. | K.Yotsutani | DATE | 2014/12/17 | | | mm | | |
| 0 | Z141440 | T.Y | Dec./16/'14 | | APP. | T.Takano | DATE | 2014/12/18 | | | SIZE | | |
| REVISION RECORD | | | | | DWG. No. | 3112 | | SIZE | A3 | SHEET | 1/5 | REV. | 4 |

| ITEMS | SPECIFICATION |
|---|--|
| RATING VOLTAGE | 5 V AC (PER A CONTACT) |
| RATING AMPERAGE (FOR SIGNAL CONTACT) | 3 A AC (PER A CONTACT) |
| OPERATING TEMPERATURE | 248~358K(-40°C~85°C) |
| OPERATING HUMIDITY | 85% MAX.(NON-CONDENDING) |
| CONTACT RESISTANCE (FOR SIGNAL CONTACT) | INITIAL : 70 mohm MAX. / AFTER TEST : 70 mohm MAX. |
| DURABILITY | 10 CYCLES |
| CONTACT FORCE | 0.30~1.10 N |
| COPLANARITY | 0.08 MAX. |
| PRODUCT SPECIFICATION | PRS-2228 |
| TEST REPORT | TR-16041 |
| PACKING STANDARD | PST-18051 |
| INSTRUCTION MANUAL | HIM-19019 |
| APPEARANCE CRITERIA No. | QLS-A*** |

| | | | | | | |
|--------------------|--------|----------------|------------------|------------------------|-------------------------|--------------------------------|
| ANGLE | ±2° | 6 OVER 30 MAX. | ±0.3 | PROJECTION | SERIES No. R0 | CUSTOMER COPY |
| | 6 MAX. | ±0.2 | 30 OVER 120 MAX. | | | |
| GENERAL TOLERANCE. | | | | TITLE MP-S03 | SCALE | I-PEX |
| DWG. | DATE | | | | | |
| CHK. | DATE | | | | | |
| APP. | DATE | | | | | |
| | | | | DWG. No. | 3112 | UNIT mm |
| | | | | SIZE | A3 | SHEET 2/5 REV. 4 |

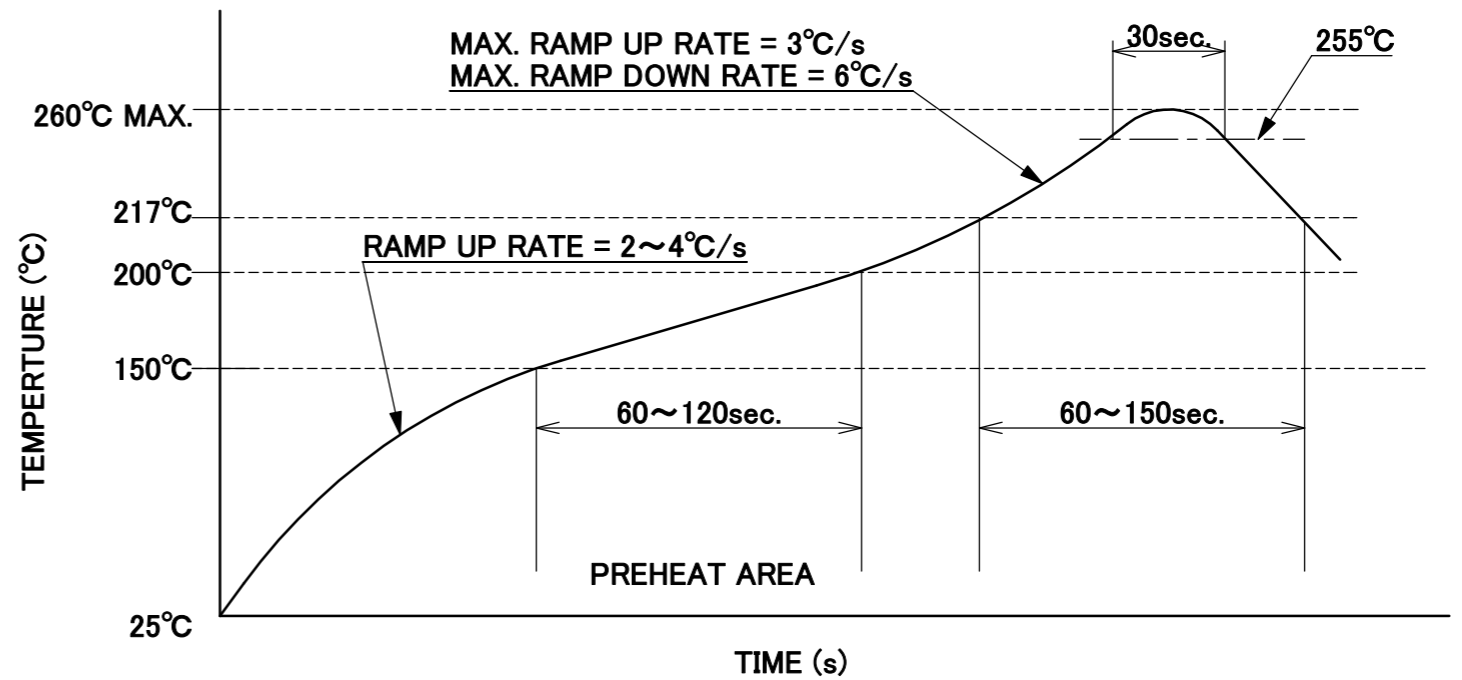
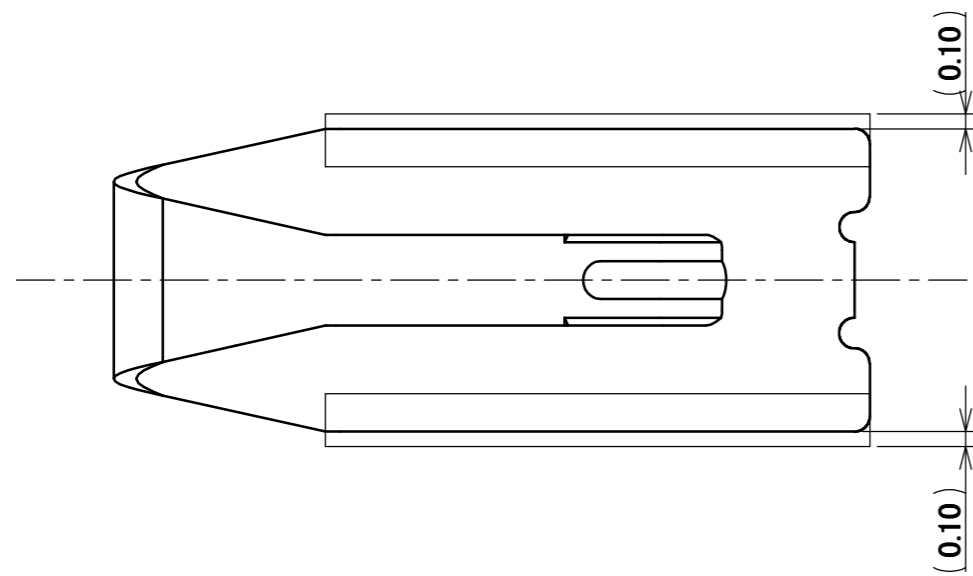


RECOMMENDED FOOTPRINT PATTERN LAYOUT



RECOMMENDED METAL MASK LAYOUT
METAL MASK THICKNESS : 0.10mm

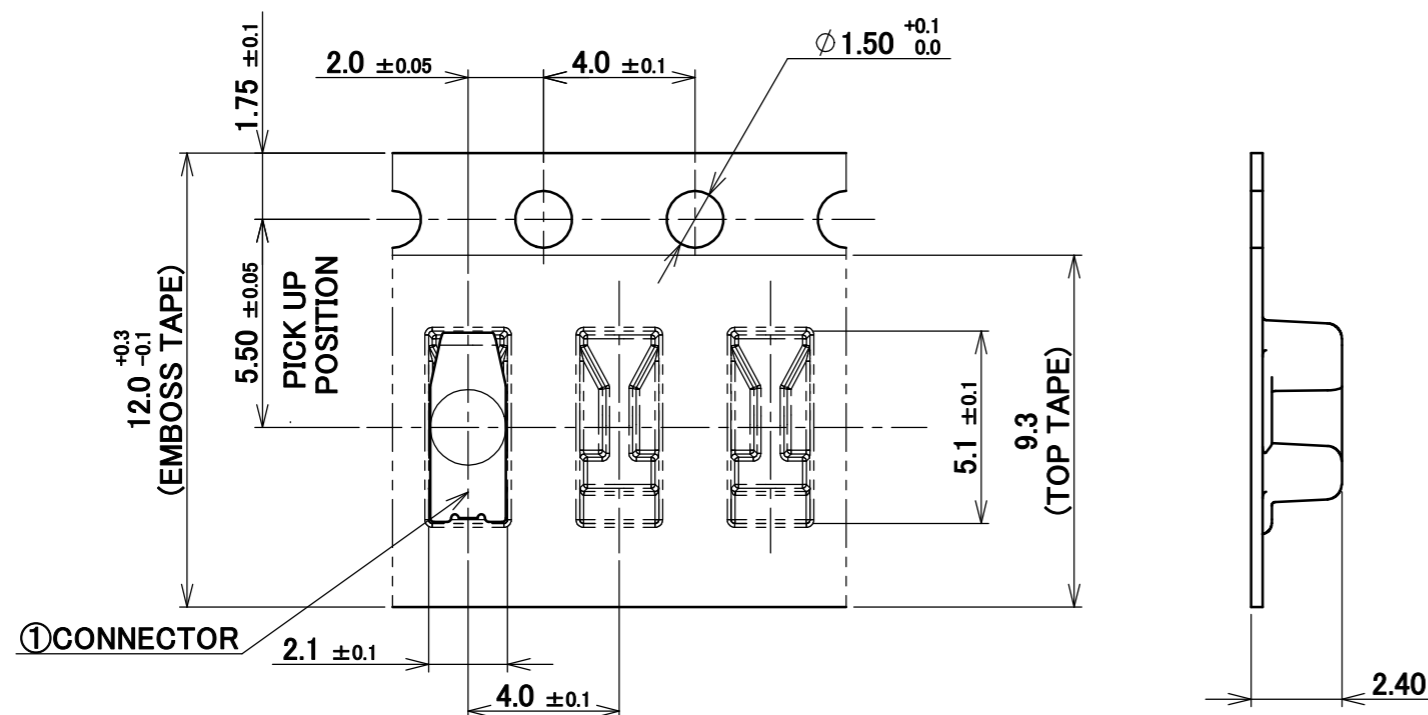
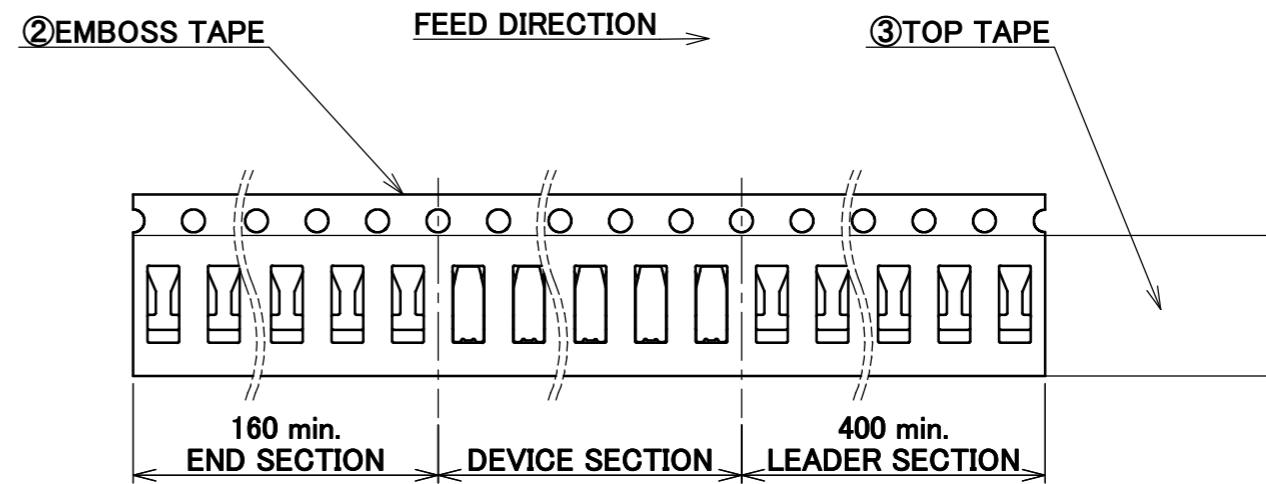
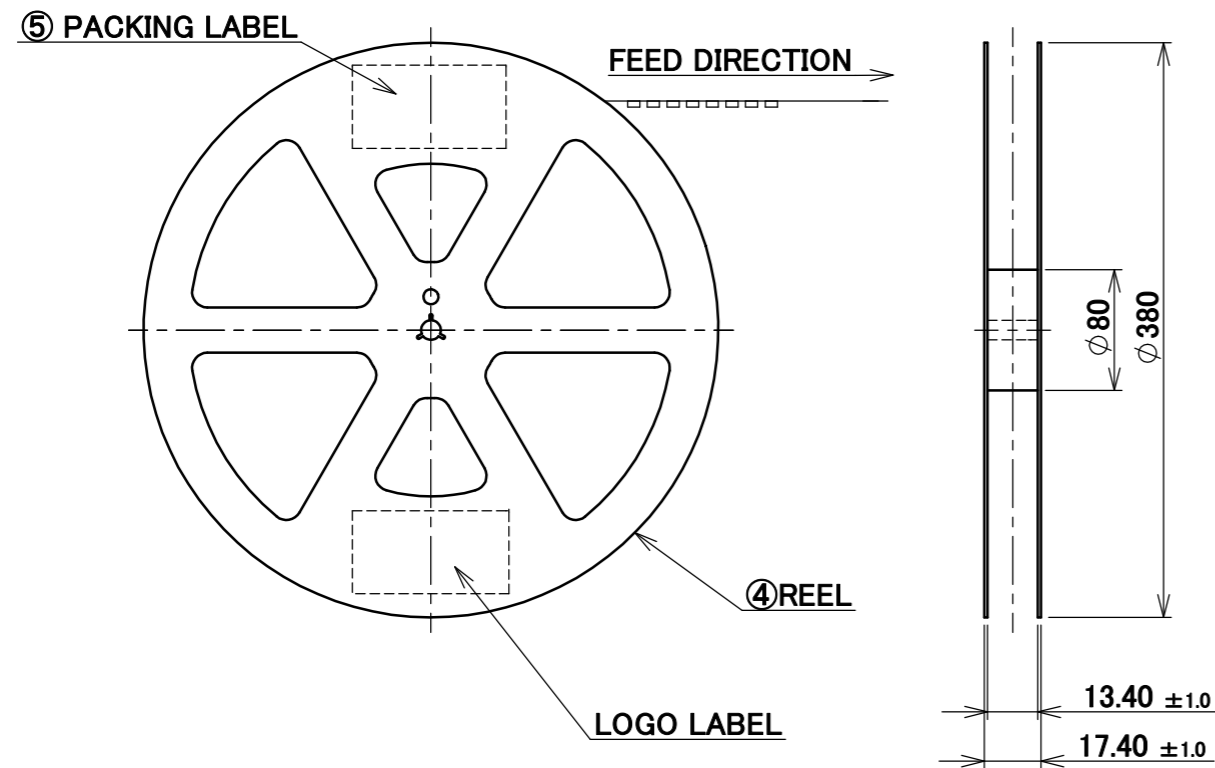
| | | | | | | | |
|--------------------|------|------------------|------|------------------------|-------------------------|----------------------|--------------------------------|
| ANGLE | ±2° | 6 OVER 30 MAX. | ±0.3 | PROJECTION | SERIES No. R0 | CUSTOMER COPY | |
| 6 MAX. | ±0.2 | 30 OVER 120 MAX. | ±0.5 | | | | |
| GENERAL TOLERANCE. | | | | TITLE MP-S03 | SCALE 20:1 | I-PEX | |
| DWG. | DATE | | | | | | |
| CHK. | DATE | | | | | | |
| APP. | DATE | | | | | | |
| | | | | DWG. No. | 3112 | SIZE A3 | SHEET 3/5 REV. 4 |



REFLOW TEMPERATURE PROFILE
 SENJU METAL INDUSTRY CO., LTD. : M705-SHF(Sn96.5 Ag3.0 Cu0.5)

| | | | | | | | |
|--------------------|------|------------------|------|----------------|------------------|---------------|------------------|
| ANGLE | ±2° | 6 OVER 30 MAX. | ±0.3 | PROJECTION | SERIES No. R0 | CUSTOMER COPY | |
| 6 MAX. | ±0.2 | 30 OVER 120 MAX. | ±0.5 | | | | |
| GENERAL TOLERANCE. | | | | TITLE | | SCALE | I-PEX |
| DWG. | DATE | | | MP-S03 | | 20:1 | |
| CHK. | DATE | | | | | UNIT | |
| APP. | DATE | | | | | mm | |
| | | | | DWG. No. | 3112 | SIZE | SHEET 4/5 REV. 4 |
| | | | | | A3 | | |

| | | |
|-----------|---|---|
| PART NO. | QTY. PER EMBOSS REEL (PIECES / REEL) | QTY. PER PACKING CARTON (REELS / CARTON) |
| 3112-0001 | 7000 / REEL | 7000 / REEL × 10 / CARTON = 70000 |



NOTES.

3. TAPING SPECIFICATION FOLLOWS JIS C 0806(IEC 60286-3).
4. MAKE EMPTY SECTION OF LEADER AND END ON EACH END OF THE TAPE.
5. TOP TAPE SHALL NOT STICK OUT FROM EMBOSS TAPE.
6. TOP TAPE SHALL NOT COVER FEED HOLE.

| NO. | DISCRIPTION | MATERIAL | FINISH , REMARKS |
|-----|---------------|-----------------------------|------------------------|
| 5 | PACKING LABEL | - | - |
| 4 | REEL | PS | ANTI-STATIC TYPE BLACK |
| 3 | TOP TAPE | PET t=0.062 TRANSPARENCY | ANTI-STATIC TYPE |
| 2 | EMBOSS TAPE | PS t=0.3 TRANSPARENCY | ANTI-STATIC TYPE |
| 1 | CONNECTOR | - | - |

| | | | | | | |
|--------------------|--------|----------------|------------------|-----------------|------------------|------------------|
| ANGLE | ±2° | 6 OVER 30 MAX. | ±0.3 | PROJECTION ⊕ | SERIES No. R0 | CUSTOMER COPY |
| | 6 MAX. | ±0.2 | 30 OVER 120 MAX. | | | |
| GENERAL TOLERANCE. | | | | TITLE | SCALE | I-PEX |
| DWG. | DATE | | | MP-S03 | 5:1 | |
| CHK. | DATE | | | | UNIT | |
| APP. | DATE | | | DWG. No. | mm | |
| | | | | 3112 | SIZE | SHEET 5/5 REV. 4 |
| | | | | | A3 | |