

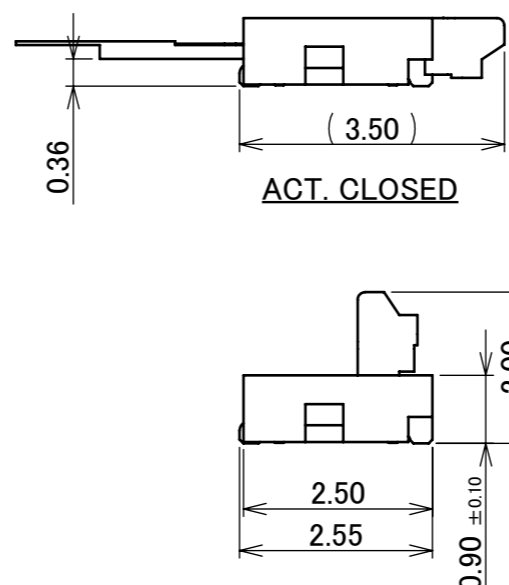
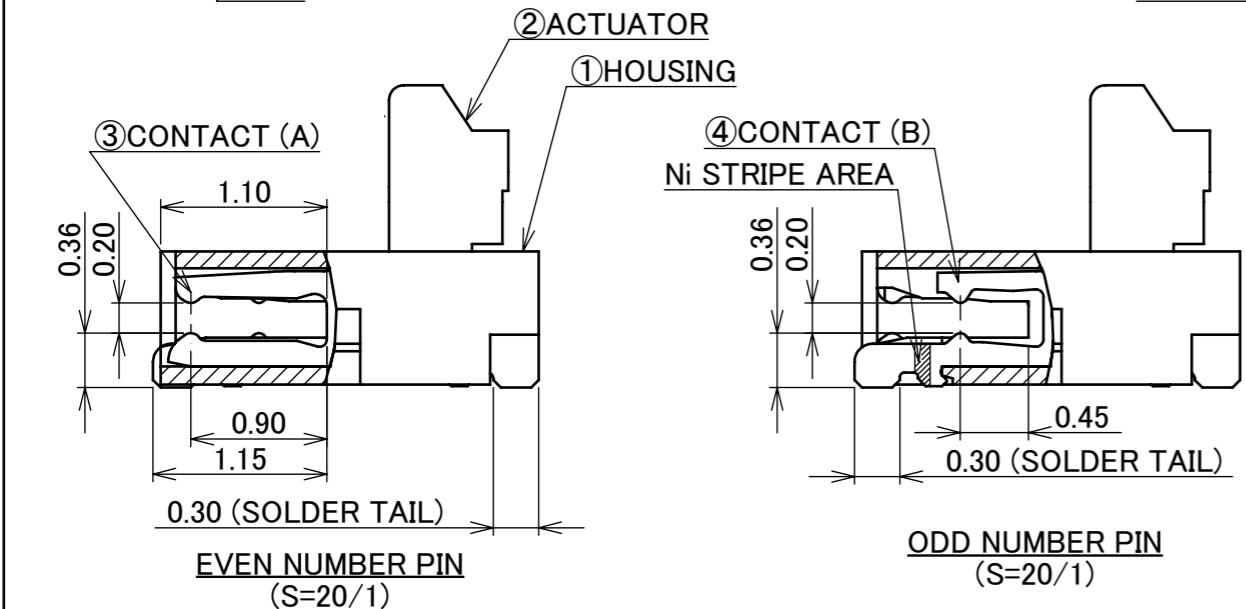
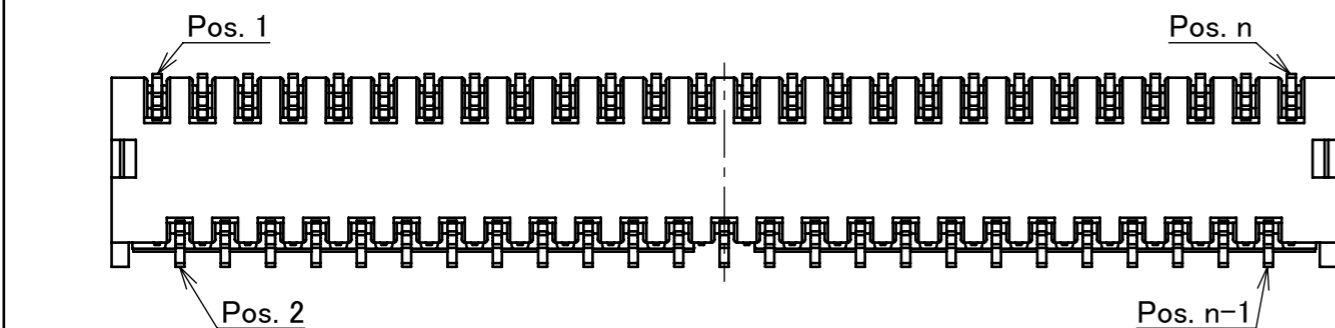
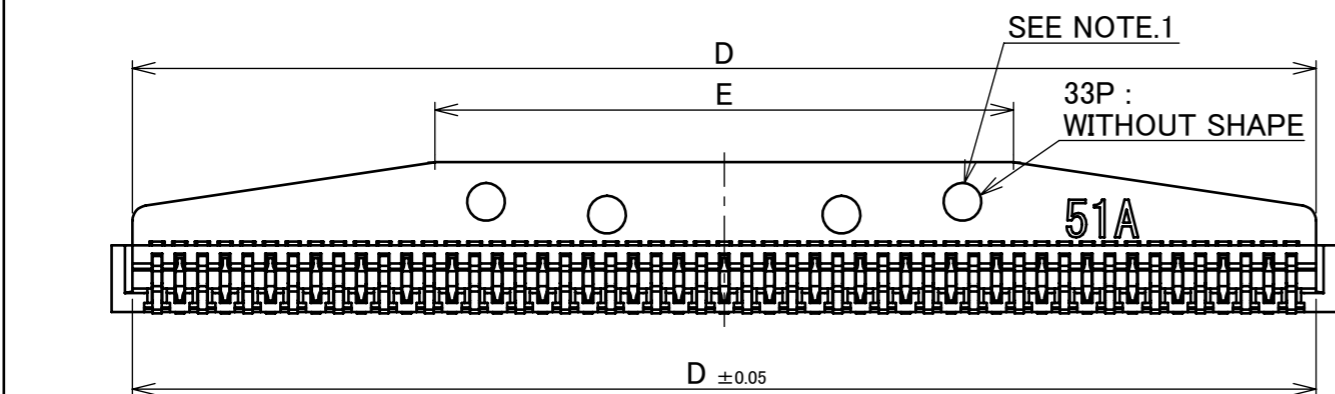
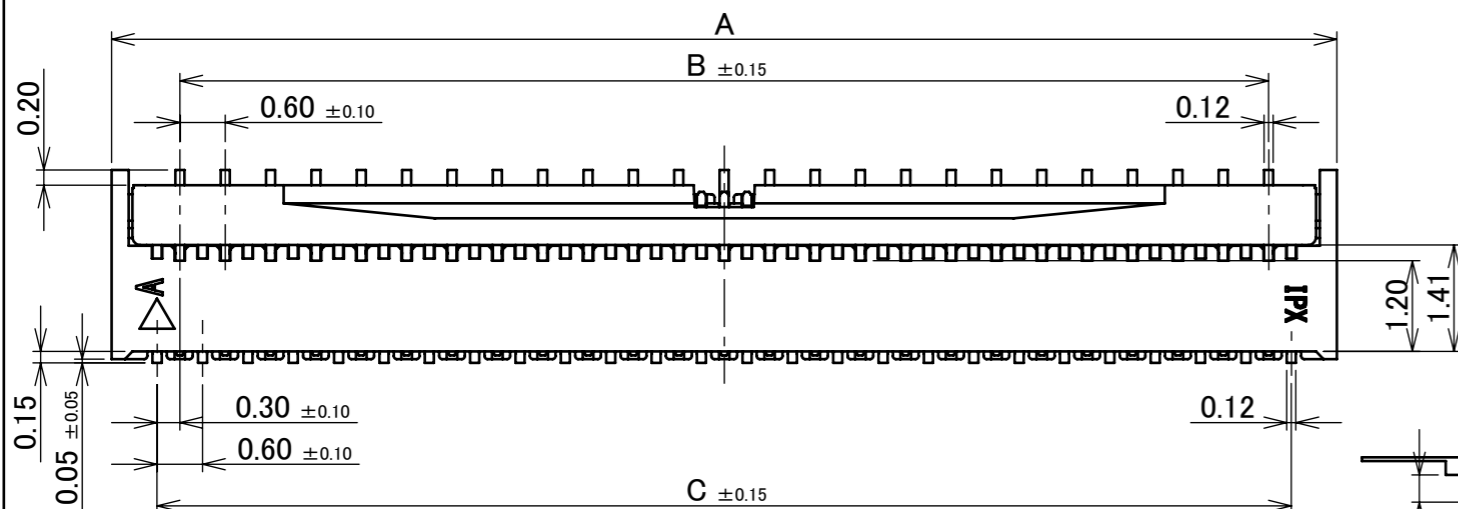


Halogen Free



RoHS Compliant

PART NO.	Pos.	A	B	C	D	E
20538-033E-0#	33P	10.80	9.00	9.60	10.25	6.25
20538-035E-0#	35P	11.40	9.60	10.20	10.85	6.85
20538-039E-0#	39P	12.60	10.80	11.40	12.05	8.05
20538-041E-0#	41P	13.20	11.40	12.00	12.65	4.65
20538-045E-0#	45P	14.40	12.60	13.20	13.85	5.85
20538-049E-0#	49P	15.60	13.80	14.40	15.05	7.05
20538-051E-0#	51P	16.20	14.40	15.00	15.65	7.65
20538-055E-0#	55P	17.40	15.60	16.20	16.85	8.85
20538-057E-0#	57P	18.00	16.20	16.80	17.45	9.45
20538-061E-0#	61P	19.20	17.40	18.00	18.65	10.65
20538-065E-0#	65P	20.40	18.60	19.20	19.85	11.85



NOTES.

- THIS DENT SHAPE IS PURPOSED FOR GOOD INJECTION QUALITY. THIS DENT SHAPE WILL NOT AFFECT CONNECTR FUNCTION. DENT SHAPE SHOWN ON DRAWING IS JUST FOR REFERENCE. DENT SHAPE AND QUANTITY MIGHT CHABGE FROM DIFFERENT PIN COUNT AND DIFFERENT TOOLING.
- CONTACT POINT : TOP AND BOTTOM CONTACT

CAUTION VISIT OUR WEBSITE FOR LATEST VERSIONS OF INSTRUCTION MANUAL NO. HIM-12007 TO HANDLE THE PRODUCT PROPERLY AND SAFELY.

TABLE 1

PART NO.	FINISH
20538-0**E-01	CONTACT AREA : Au 0.10 μm MIN. OVER Ni 1.00 μm MIN. SOLDERING AREA : Au 0.03 μm MIN. OVER Ni 1.00 μm MIN.
20538-0**E-02	CONTACT AREA : Au 0.254 μm MIN. OVER Ni 1.00 μm MIN. SOLDERING AREA : Au 0.03 μm MIN. OVER Ni 1.00 μm MIN.

NO.	DISCRIPTION	MATERIAL	FINISH , REMARKS
4	CONTACT (B)	PHOSPHOR BRONZE	SEE TABLE 1, WITH Ni STRIPE
3	CONTACT (A)	PHOSPHOR BRONZE	SEE TABLE 1
2	ACTUATOR	LCP	UL94V-0, BEIGE
1	HOUSING	LCP	UL94V-0, BEIGE

REV.	ECN	BY	DATE	APP.	APPROVAL	PROJECTION	SERIES No.	TITLE	SCALE	SHEET	REV.
18	Z240696	W.L	2024/06/20	M.T	ANGLE ±2° 6 OVER 30 MAX. ±0.3	MINIFLEX® 3-BFN L	R3	CUSTOMER COPY	10:1	mm	18
17	Z191376	M.M	2019/10/15	H.I	6 MAX. ±0.2 30 OVER 120 MAX. ±0.5						
16	Z181440	T.O	2018/11/02	H.I	GENERAL TOLERANCE.	MINIFLEX® 3-BFN L	R3	CUSTOMER COPY	10:1	mm	18
15	Z181289	T.O	2018/10/01	H.I	DWG. Y.Shimada DATE 2011/02/14						
14	Z161237	H.A	2016/10/06	Y.S	CHK. Y.Hashimoto						
13	Z150443	R.T	2015/04/21	E.K	APP. T.Harada	DWG. No.	20538	SIZE	A3	1/5	REV.

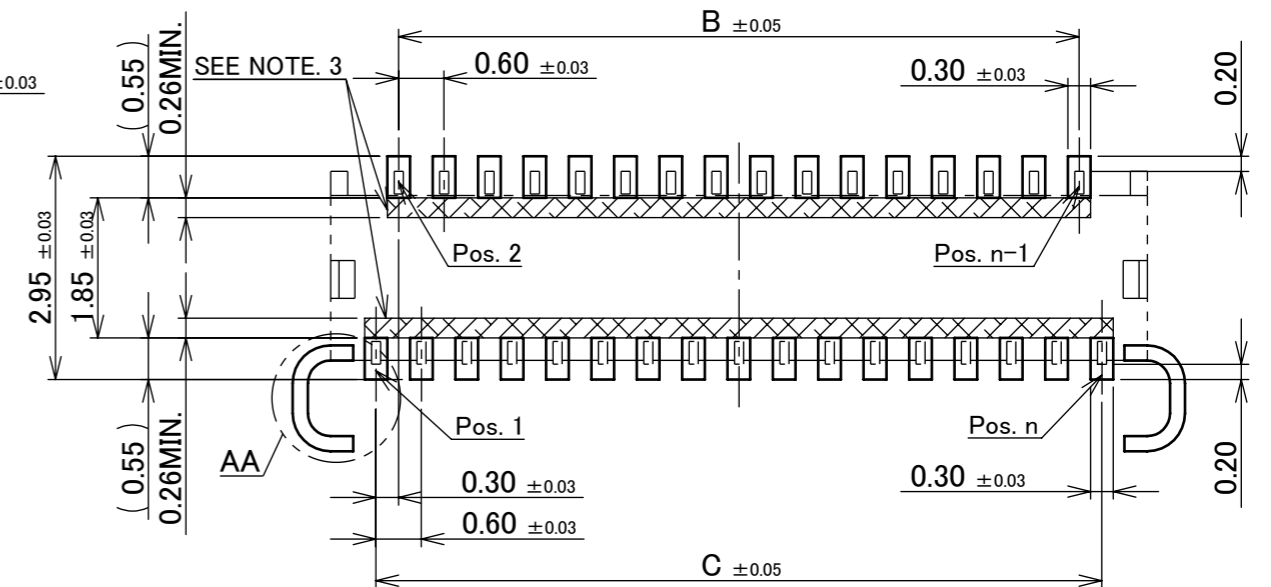
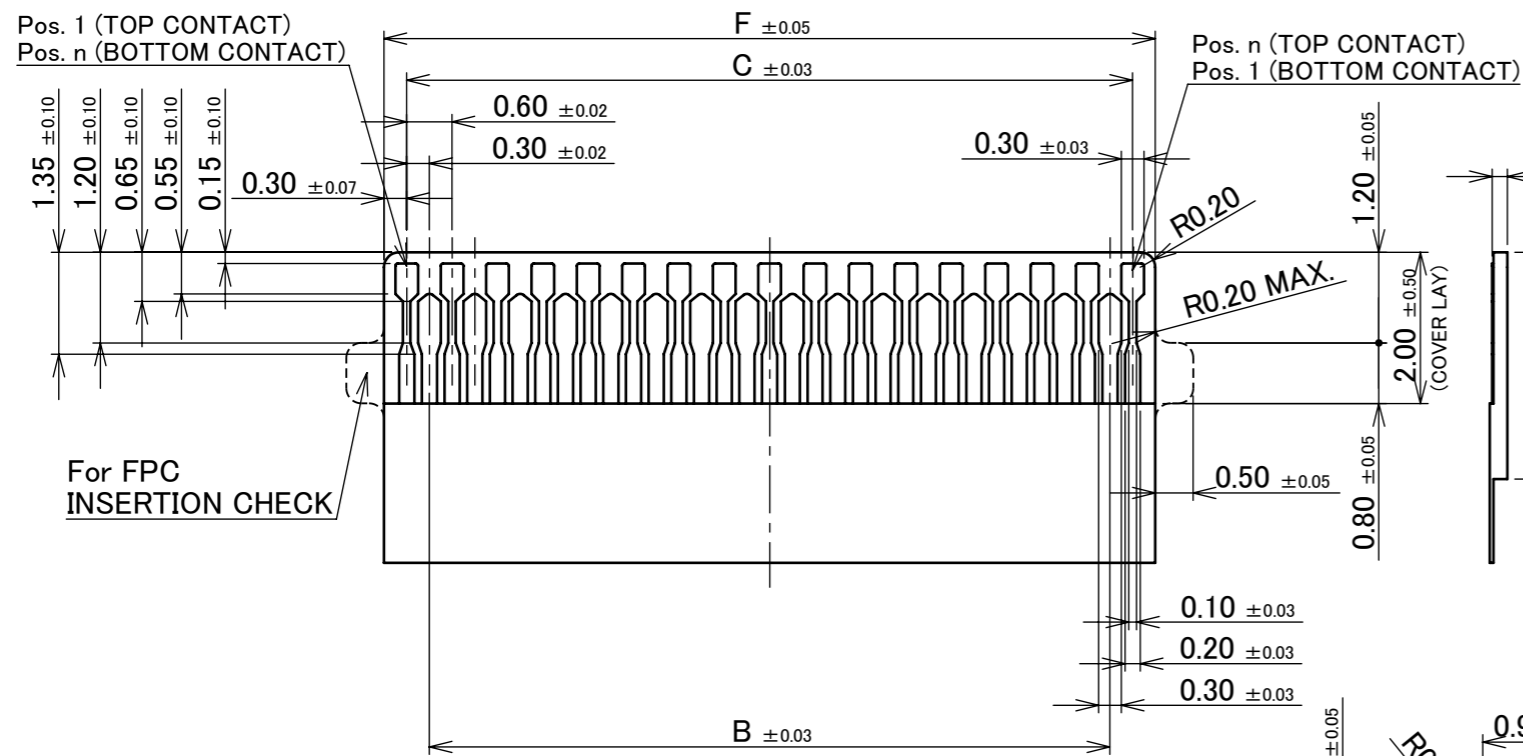
ITEMS	SPECIFICATION
RATING VOLTAGE	50V AC (PER CONTACT)
RATING AMPERAGE	0.3A DC (PER CONTACT)
OPERATING TEMPERATURE	233~358K (-40°C~+85°C)
OPERATING HUMIDITY	20~80%RH
CONTACT RESISTANCE	INITIAL : 60mohm MAX. / AFTER TEST : \triangleleft 40mohm MAX.
INSULATION RESISTANCE	100Mohm MIN.
DIELECTRIC WITHSTANDING VOLTAGE	AC250V 1min
DURABILITY	20 CYCLES
ACTUATOR LOCKING FORCE (INITIAL / 20 CYCLES)	INITIAL / 20 CYCLES 0.21N (21gf) \times n MAX.
ACTUATOR UNLOCKING FORCE (INITIAL / 20 CYCLES)	INITIAL / 20 CYCLES 0.014N (1.4gf) \times n MIN.
FPC RETENTION FORCE (INITIAL / AFTER TEST)	INITIAL: 0.13N (13gf) \times n MIN. / AFTER TEST: 0.10N (10gf) \times n MIN.
COPLANARITY	0.10 MAX.
PRODUCT SPECIFICATION	PRS-1579
TEST REPORT	TR-12040
PACKING STANDARD	300-920
INSTRUCTION MANUAL	HIM-12007
APPEARANCE CRITERIA No.	QLS-A***

※ "n" IS THE NUMBER OF PIN

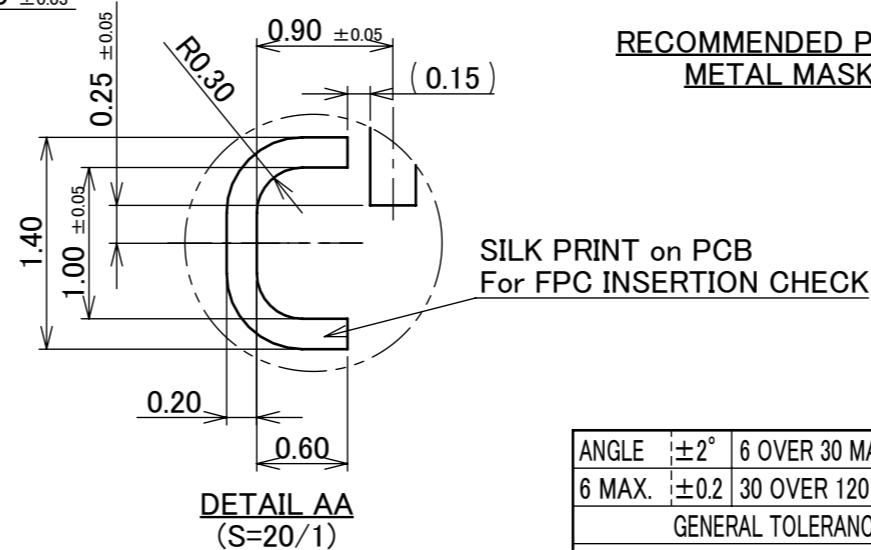
ANGLE	$\pm 2^\circ$	6 OVER 30 MAX.	± 0.3	PROJECTION 	SERIES No. R3	CUSTOMER COPY		
6 MAX.	± 0.2	30 OVER 120 MAX.	± 0.5			TITLE MINIFLEX [®] 3-BFN L	SCALE 5:1	I-PEX
GENERAL TOLERANCE.				DWG. No. 20538	UNIT mm	SIZE A3	SHEET 2/5	
DWG.	DATE							
CHK.								
APP.								

PART NO.	Pos.	B	C	F
20538-033E-0#	33P	9.00	9.60	10.20
20538-035E-0#	35P	9.60	10.20	10.80
20538-039E-0#	39P	10.80	11.40	12.00
20538-041E-0#	41P	11.40	12.00	12.60
20538-045E-0#	45P	12.60	13.20	13.80
20538-049E-0#	49P	13.80	14.40	15.00
20538-051E-0#	51P	14.40	15.00	15.60
20538-055E-0#	55P	15.60	16.20	16.80
20538-057E-0#	57P	16.20	16.80	17.40
20538-061E-0#	61P	17.40	18.00	18.60
20538-065E-0#	65P	18.60	19.20	19.80

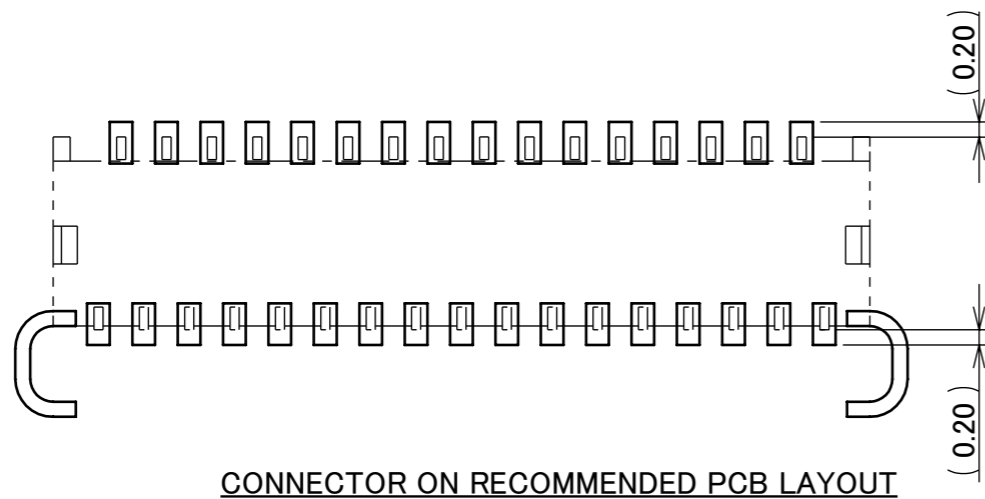
NOTES.
3. SOLDER RESIST SHALL BE APPLIED TO PREVENT SHORT CIRCUITS WHEN PLACING SIGNAL LINES ON GROUND AREA.



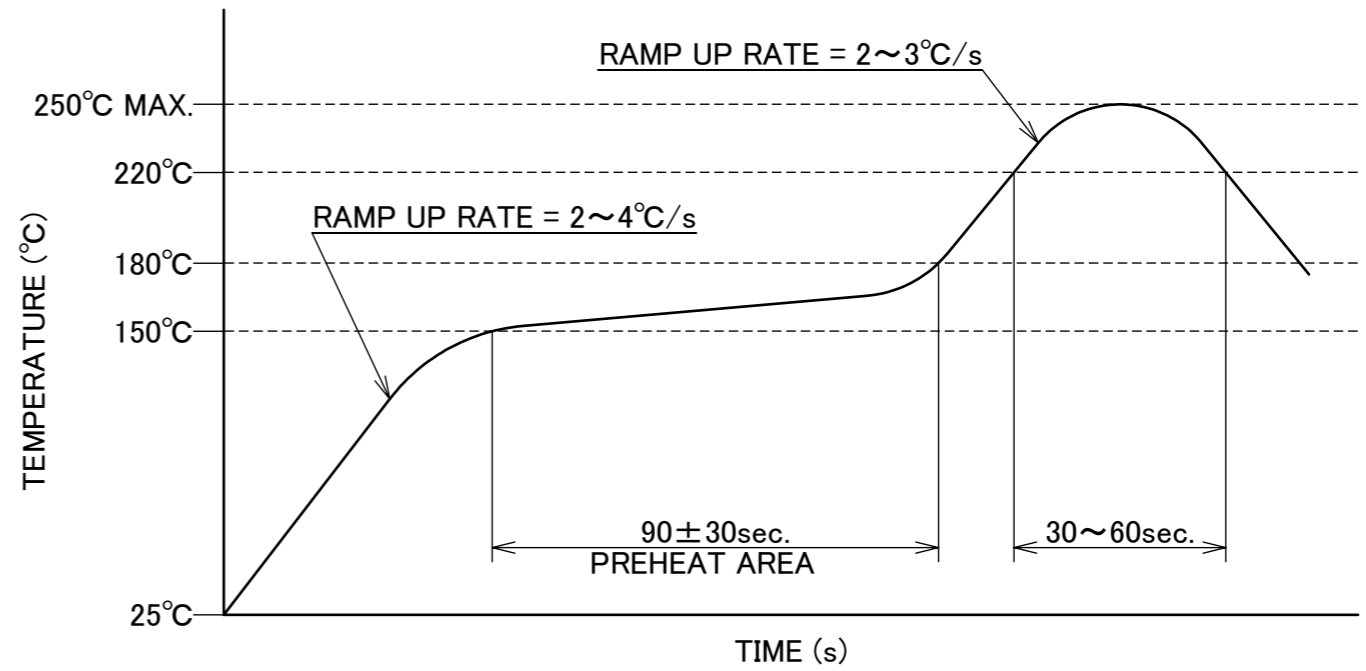
RECOMMENDED PCB & METAL MASK LAYOUT
METAL MASK THICKNESS : t=0.12mm



ANGLE	±2°	6 OVER 30 MAX.	±0.3	PROJECTION ⊕	SERIES No. R3	CUSTOMER COPY			
6 MAX.	±0.2	30 OVER 120 MAX.	±0.5						
GENERAL TOLERANCE.				TITLE MINIFLEX® 3-BFN L		SCALE 10:1	I-PEX		
DWG.	DATE			DWG. No. 20538		UNIT mm			
CHK.						SIZE A3			



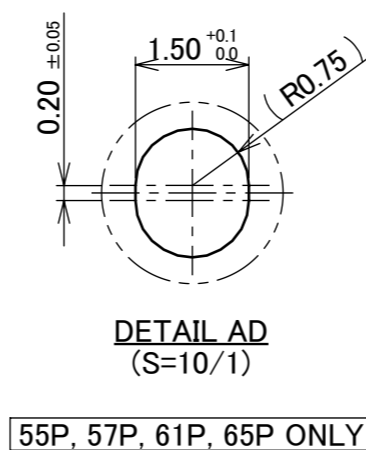
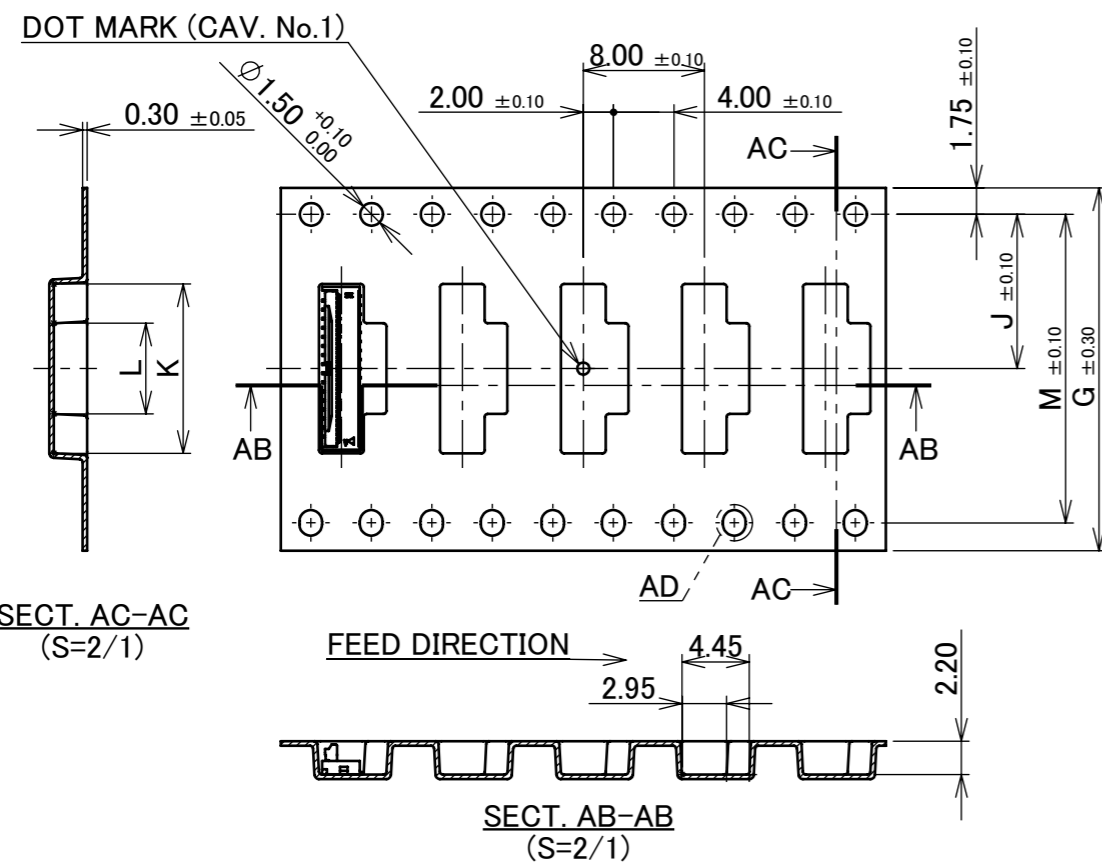
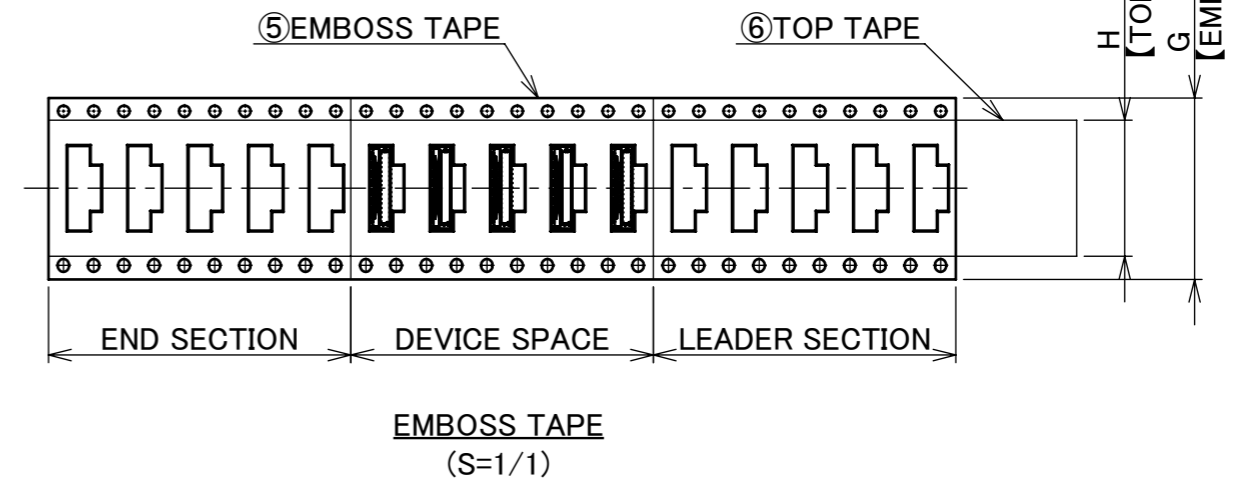
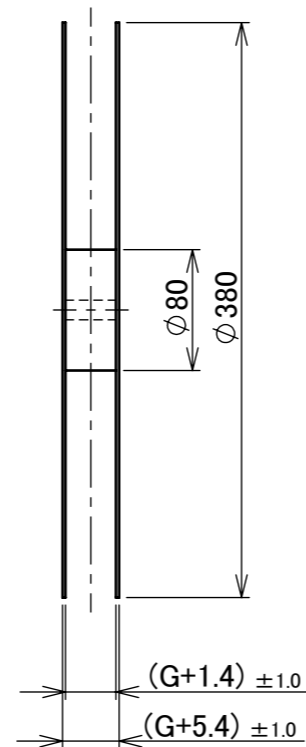
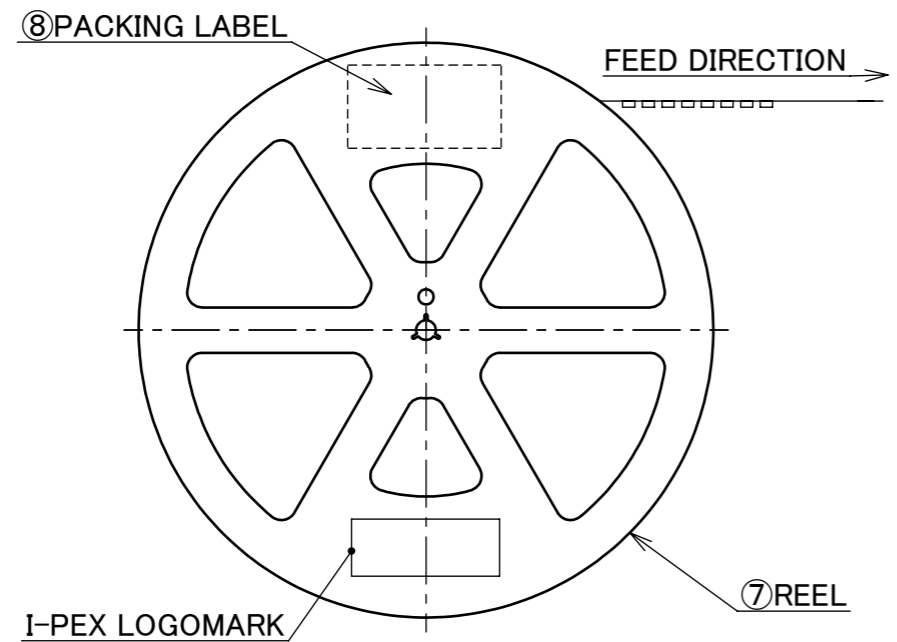
CONNECTOR ON RECOMMENDED PCB LAYOUT



REFLOW TEMPERATURE PROFILE
 SENJU METAL INDUSTRY CO., LTD. : M705-SHF(Sn96.5 Ag3.0 Cu0.5)

ANGLE	±2°	6 OVER 30 MAX.	±0.3	PROJECTION 	SERIES No. R3	CUSTOMER COPY					
6 MAX.	±0.2	30 OVER 120 MAX.	±0.5								
GENERAL TOLERANCE.				TITLE MINIFLEX® 3-BFN L		SCALE 10:1	I-PEX				
DWG.	DATE			DWG. No. 20538		UNIT mm					
CHK.						SIZE A3				SHEET 4/5	REV. 18
APP.											

DEVICE P/N	G	H	J	K	L	M	QTY. PER EMBOSS REEL (PIECES / REEL)	QTY. PER PACKING CARTON (REELS / CARTON)
20538-033E-0#	24.0	21.5	11.50	11.20	6.00	-	4,000 / REEL	5 / CARTON = 20,000
20538-035E-0#				11.80				
20538-039E-0#				13.00				
20538-041E-0#				13.60				
20538-045E-0#				14.80				
20538-049E-0#				16.00				
20538-051E-0#	32.0	26.0	14.20	16.60	8.00	-	4,000 / REEL	5 / CARTON = 20,000
20538-055E-0#				17.80				
20538-057E-0#				18.40				
20538-061E-0#				19.60				
20538-065E-0#				20.80				
					10.00	28.40		4 / CARTON = 16,000



55P, 57P, 61P, 65P ONLY

- NOTES.
- TAPING SPECIFICATION FOLLOWS JIS C 0806 (IEC 60286-3).
 - MAKE EMPTY SECTION OF LEADER AND END ON EACH END OF THE TAPE.
 - TOP TAPE SHALL NOT STICK OUT FROM EMBOSS TAPE.
 - TOP TAPE SHALL NOT COVER FEED HOLE.

NO.	DISCRIPTION	MATERIAL	FINISH , REMARKS
8	PACKING LABEL	-	-
7	REEL	PS	BLACK
6	TOP TAPE	PET t=0.061 TRANSPARENCY	ANTI-STATIC TYPE ADHESIVE TYPE
5	EMBOSS TAPE	PS t=0.3 TRANSPARENCY	ANTI-STATIC TYPE

ANGLE	±2°	6 OVER 30 MAX.	±0.3	PROJECTION	SERIES No.	CUSTOMER COPY	
6 MAX.	±0.2	30 OVER 120 MAX.	±0.5		R3		
GENERAL TOLERANCE.				TITLE	MINIFLEX® 3-BFN L		
DWG.	DATE					SCALE	I-PEX
CHK.						5:1	
APP.				DWG. No.	20538	UNIT	mm
				SIZE	A3	SHEET	
						REV.	18