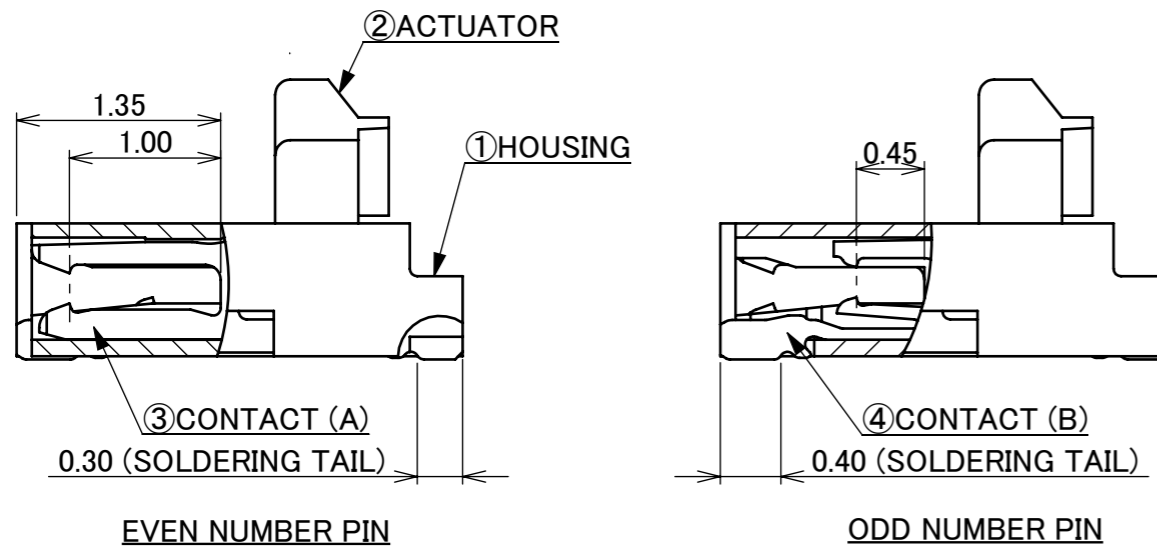


NOTES.

1. THIS DENT SHAPE IS PURPOSED FOR GOOD INJECTION QUALITY. THIS DENT SHAPE WILL NOT AFFECT CONNECTOR FUNCTION. DENT SHAPE SHOWN ON DRAWING IS JUST FOR REFERENCE. DENT SHAPE AND QUANTITY MIGHT CHANGE FROM DIFFERENT PIN COUNT AND DIFFERENT TOOLING.
2. CONTACT POINT : TOP AND BOTTOM CONTACT



5	ACTUATOR HOLDER	NICKEL SILVER	
4	CONTACT(B)	PHOSPHOR BRONZE	CONTACT AREA : Au 0.1 μm MIN. OVER Ni 1.0 μm MIN. SOLDERING AREA : Au 0.03 μm MIN. OVER Ni 1.0 μm MIN.
3	CONTACT(A)	PHOSPHOR BRONZE	CONTACT AREA : Au 0.1 μm MIN. OVER Ni 1.0 μm MIN. SOLDERING AREA : Au 0.03 μm MIN. OVER Ni 1.0 μm MIN.
2	ACTUATOR	LCP	UL94V-0, BEIGE
1	HOUSING	LCP	UL94V-0, BEIGE
NO.	DISCRIPTION	MATERIAL	REMARKS

12	Z240695	W.L	2024/06/14	M.T	ANGLE	±2°	6 OVER 30 MAX.	±0.3	PROJECTION ⊕	SERIES No. R4	CUSTOMER COPY
11	Z230318	K.W	2023/03/20	M.T	6 MAX.	±0.2	30 OVER 120 MAX.	±0.5			
10	Z191249	S.Sh	2019/09/18	H.I	GENERAL TOLERANCE.			TITLE MINIFLEX® 3-BFNH L	SCALE 10:1	UNIT mm	I-PEX
9	Z181441	M.M	2018/11/05	Y.S	DWG.	DATE					
8	Z180998	M.M	2018/08/21	Y.S	M.Muro		2014/01/23				
7	Z161218	H.A	2016/10/06	Y.S	CHK.	J.Tateishi		DWG. No. 20605	SIZE A3	SHEET 1/5	REV. 12
REV.	ECN	BY	DATE	APP.	E.Kawabe						
REVISION RECORD											

ITEMS	SPECIFICATION
RATING VOLTAGE	50V AC/DC (PER CONTACT PIN)
RATING AMPERAGE	0.3A DC (PER CONTACT PIN)
OPERATING TEMPERATURE	233~358K(-40°C~+85°C)
OPERATING HUMIDITY	85% MAX.
CONTACT RESISTANCE	INITIAL : 60mohm MAX. / AFTER TEST : \triangleleft 40mohm MAX.
INSULATION RESISTANCE	100Mohm MIN.
DIELECTRIC WITHSTANDING VOLTAGE	AC250V 1min
DURABILITY	20TH CYCLES
ACTUATOR LOCKING FORCE (INITIAL / 20TH CYCLES)	INITIAL : 0.245N(24.5gf) \times n MAX. / 20TH CYCLES : 0.245N(24.5gf) \times n MAX.
ACTUATOR UNLOCKING FORCE (INITIAL / 20TH CYCLES)	INITIAL : 0.014N(1.4gf) \times n MIN. / 20TH CYCLES : 0.014N(1.4gf) \times n MIN.
FPC RETENTION FORCE (INITIAL / AFTER TEST)	INITIAL : 0.13N(13gf) \times n MIN. / AFTER TEST : 0.10N(10gf) \times n MIN.
COPLANARITY	0.10 MAX.
PRODUCT SPECIFICATION	PRS-1920
TEST REPORT	TR-14022
PACKING STANDARD	PST-14013
INSTRUCTION MANUAL	HIM-14004
APPEARANCE CRITERIA	QLS-A***

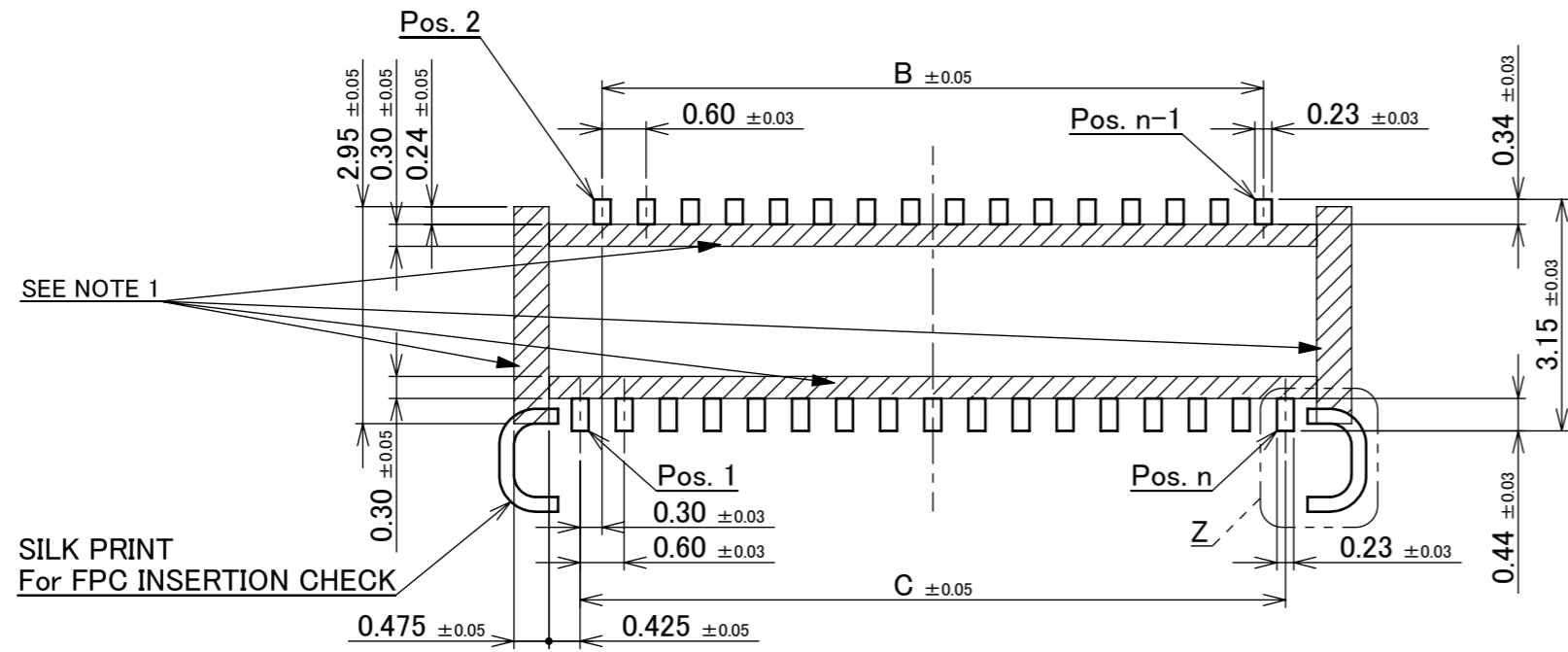
※ "n" IS THE NUMBER OF PIN



CAUTION

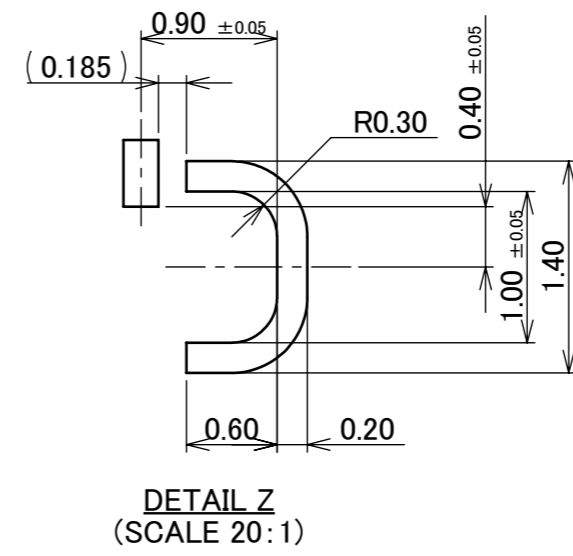
PLEASE BE SURE TO READ AND UNDERSTAND "INSTRUCTION MANUAL" BEFORE YOU USE OUR PRODUCTS.

ANGLE	$\pm 2^\circ$	6 OVER 30 MAX.	± 0.3	PROJECTION 	SERIES No. R4	CUSTOMER COPY		
6 MAX.	± 0.2	30 OVER 120 MAX.	± 0.5			SCALE -	I-PEX	
GENERAL TOLERANCE.				TITLE MINIFLEX® 3-BFNH L	DWG. No. 20605	UNIT mm		
DWG.	DATE					SIZE A3		
CHK.								
APP.								



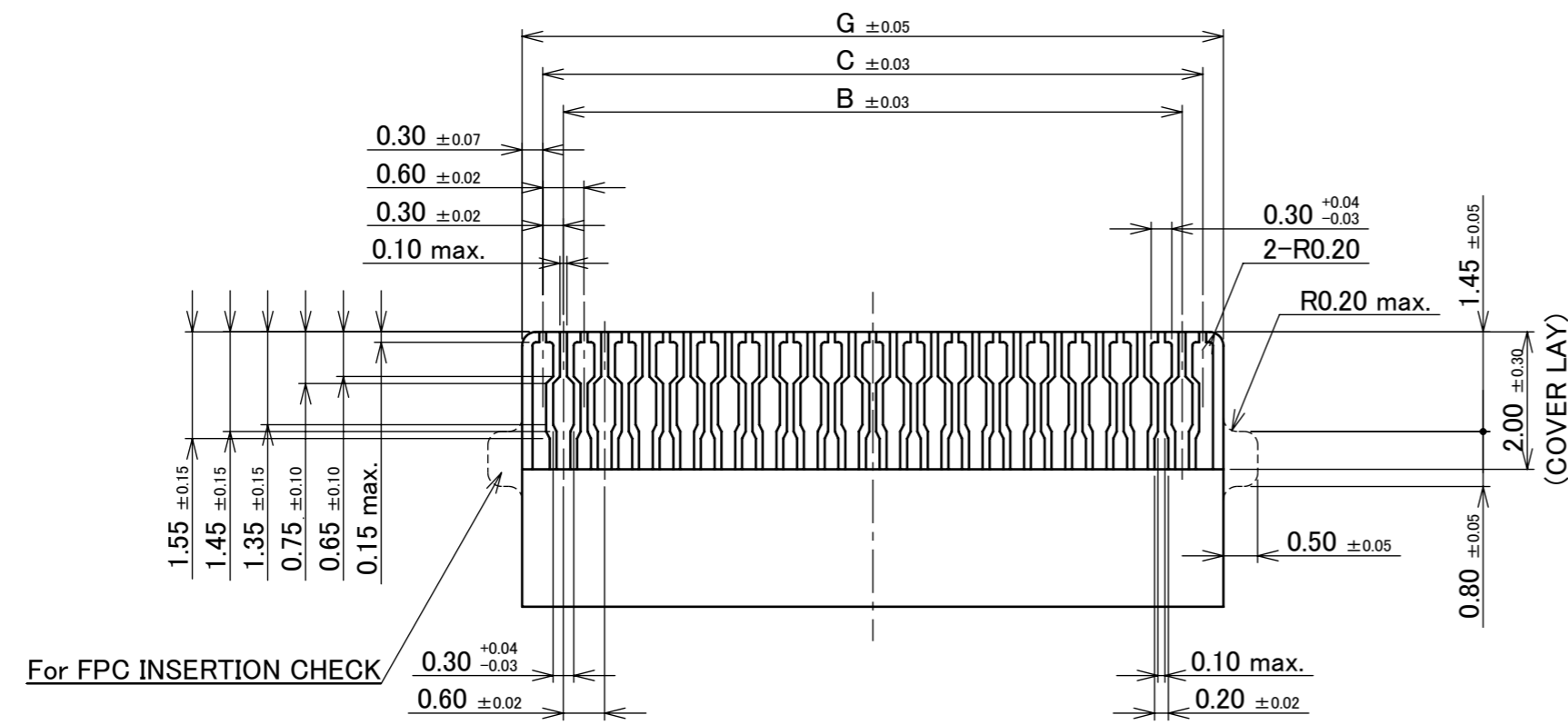
SILK PRINT
For FPC INSERTION CHECK

RECOMMENDED PCB LAYOUT & METAL MASK LAYOUT
METAL MASK THICKNESS : t=0.12mm



PART No.	Pos.	B	C	G
◆20605-033E-02	33P	9.00	9.60	10.20
◆20605-035E-02	35P	9.60	10.20	10.80
◆20605-037E-02	37P	10.20	10.80	11.40
◆20605-039E-02	39P	10.80	11.40	12.00
◆20605-041E-02	41P	11.40	12.00	12.60
◆20605-043E-02	43P	12.00	12.60	13.20
◆20605-045E-02	45P	12.60	13.20	13.80
◆20605-047E-02	47P	13.20	13.80	14.40
◆20605-049E-02	49P	13.80	14.40	15.00
20605-051E-02	51P	14.40	15.00	15.60
◆20605-053E-02	53P	15.00	15.60	16.20
◆20605-055E-02	55P	15.60	16.20	16.80
◆20605-057E-02	57P	16.20	16.80	17.40
◆20605-059E-02	59P	16.80	17.40	18.00
20605-061E-02	61P	17.40	18.00	18.60
20605-071E-02	71P	20.40	21.00	21.60

◆MARK MEANS NOT AVAILABLE.

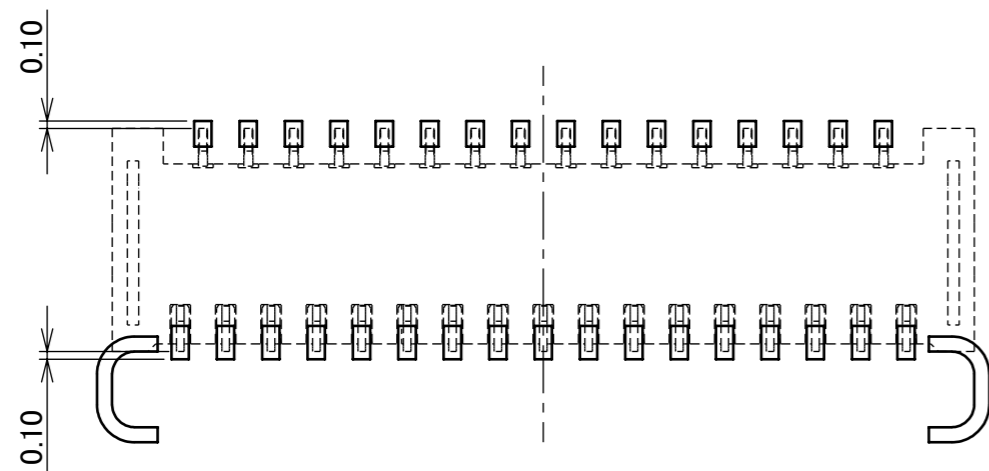


For FPC INSERTION CHECK

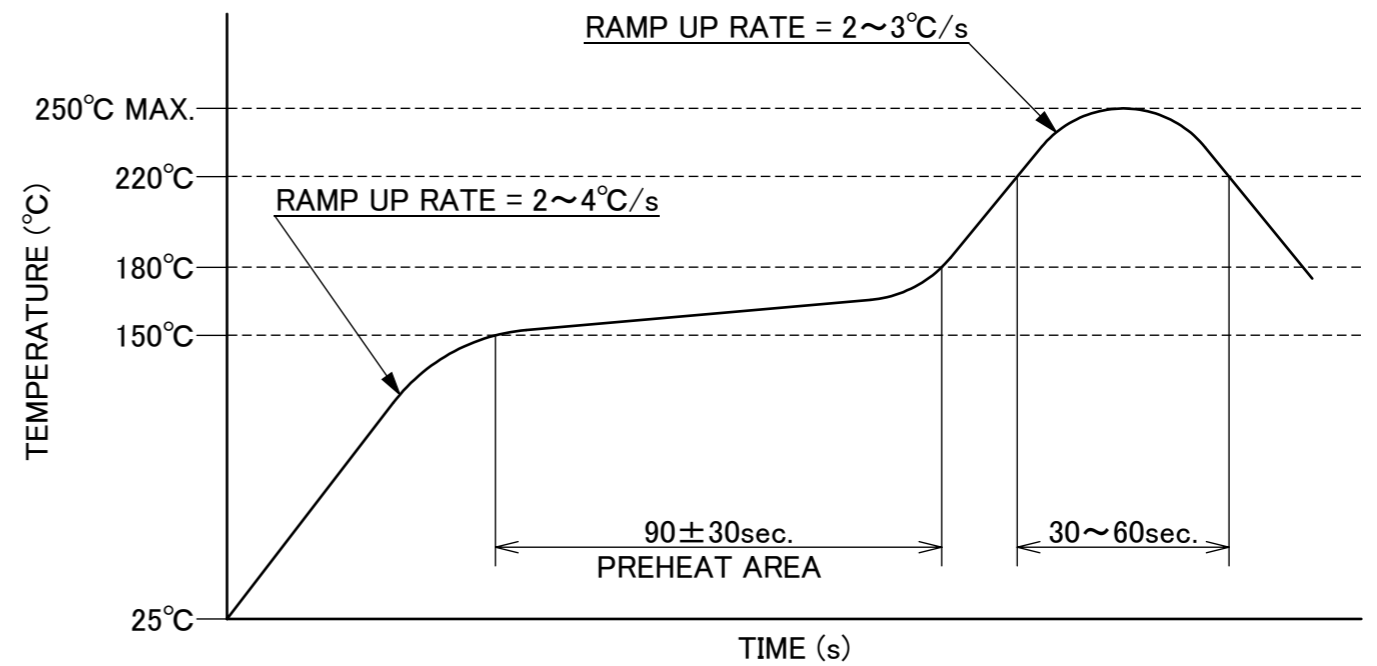
RECOMMENDED FPC LAYOUT

ANGLE	±2°	6 OVER 30 MAX.	±0.3	PROJECTION	SERIES No.	CUSTOMER COPY	
6 MAX.	±0.2	30 OVER 120 MAX.	±0.5		R4		
GENERAL TOLERANCE.				TITLE	SCALE		
DWG.	DATE			MINIFLEX® 3-BFNH L	10:1		
CHK.					UNIT		
APP.					mm		
				DWG. No.	20605	SIZE	SHEET
						A3	3/5
							REV.
							12

NOTE
1. SOLDER RESIST MUST BE APPLIED TO THIS AREA.



CONNECTOR ON RECOMMENDED FOOTPRINT PATTERN

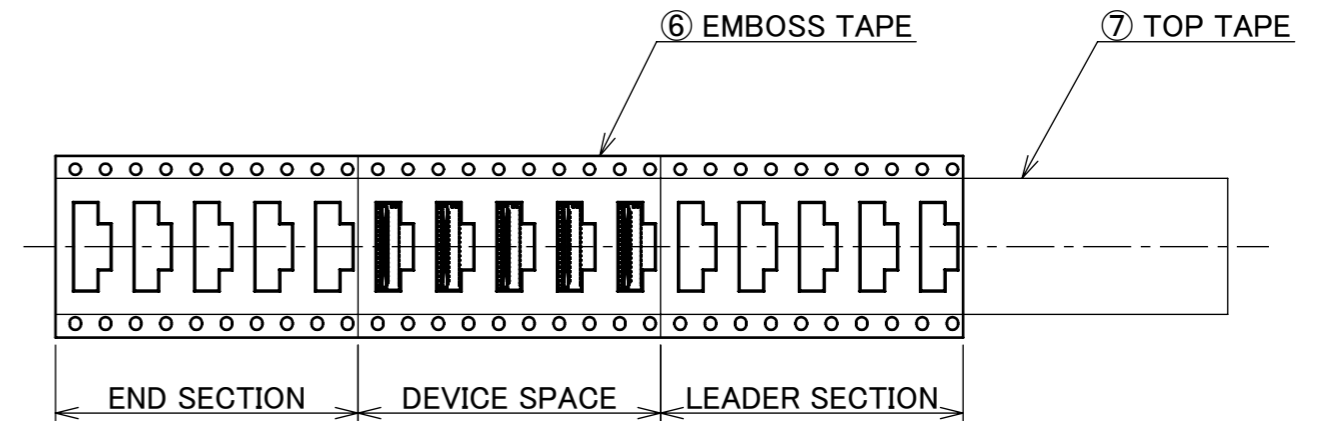
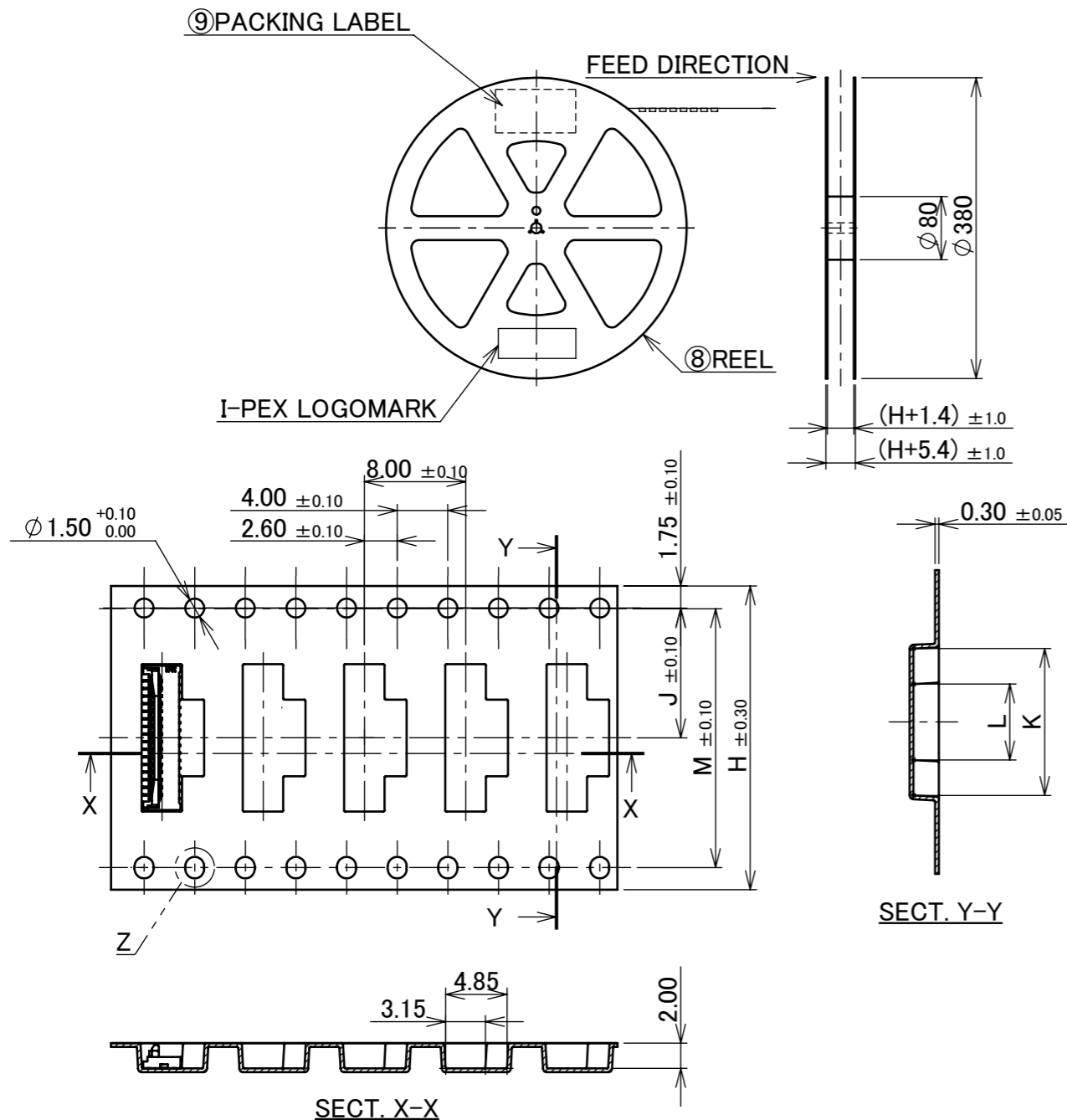


REFLOW TEMPERATURE PROFILE
 SENJU METAL INDUSTRY CO., LTD. : M705-SHF(Sn96.5 Ag3.0 Cu0.5)

ANGLE	±2°	6 OVER 30 MAX.	±0.3	PROJECTION 	SERIES No. R4	CUSTOMER COPY		
6 MAX.	±0.2	30 OVER 120 MAX.	±0.5					
GENERAL TOLERANCE.				TITLE MINIFLEX® 3-BFNH L	SCALE 10:1	UNIT I-PEX		
DWG.	DATE							
CHK.								
APP.								
				DWG. No.	20605	SIZE A3	SHEET 4/5	REV. 12

PART No.	H	J	K	L	M	QTY. PER EMBOSS REEL (PIECES / REEL)	QTY. PER PACKING CARTON (REELS / CARTON)
◆20605-033E-02	24.00	11.50	11.60	6.00	-	4000 PIECES / REEL	5 REELS / CARTON (20000 PIECES / CARTON)
◆20605-035E-02			12.20				
◆20605-037E-02			12.80				
◆20605-039E-02			13.40				
◆20605-041E-02			14.00				
◆20605-043E-02			14.60				
◆20605-045E-02			15.20				
◆20605-047E-02	32.00	14.20	15.80	8.00	28.40	4000 PIECES / REEL	4 REELS / CARTON (16000 PIECES / CARTON)
◆20605-049E-02			16.40				
20605-051E-02			17.00				
◆20605-053E-02			17.60				
◆20605-055E-02			18.20				
◆20605-057E-02			18.80				
◆20605-059E-02			19.40				
20605-061E-02			20.00	10.00			
20605-071E-02	44.00	20.20	23.00		40.40	4000 PIECES / REEL	3 REELS / CARTON (12000 PIECES / CARTON)

◆ MARK MEANS NOT AVAILABLE.



NOTES.

1. TAPING SPECIFICATION FOLLOWS JIS C 0806 (IEC 60286-3).
2. MAKE EMPTY SECTION OF LEADER AND END ON EACH END OF THE TAPE.
3. TOP TAPE SHALL NOT STICK OUT FROM EMBOSS TAPE.
4. TOP TAPE SHALL NOT COVER FEED HOLE.

NO.	DISCRIPTION	MATERIAL	FINISH , REMARKS
9	PACKING LABEL	-	-
8	REEL	PS	BLACK
7	TOP TAPE	PET t=0.062 TRANSPARENCY	ANTI-STATIC TYPE
6	EMBOSS TAPE	PS t=0.3 TRANSPARENCY	ANTI-STATIC TYPE

ANGLE	±2°	6 OVER 30 MAX.	±0.3	PROJECTION	SERIES No.	CUSTOMER COPY			
6 MAX.	±0.2	30 OVER 120 MAX.	±0.5		R4				
GENERAL TOLERANCE.				TITLE	MINIFLEX® 3-BFNH L				
DWG.	DATE					SCALE	-		
CHK.						UNIT	mm		
APP.				DWG. No.	20605	SIZE	SHEET	REV.	
						A3	5/5	12	