

Recommended P/N 20279-001E-03

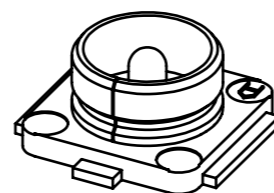
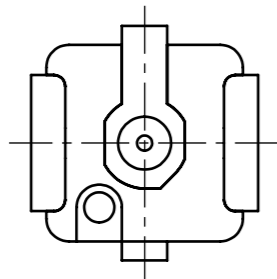
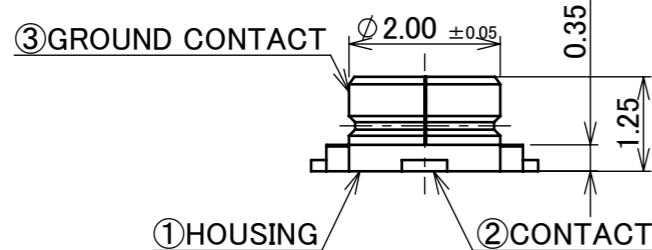
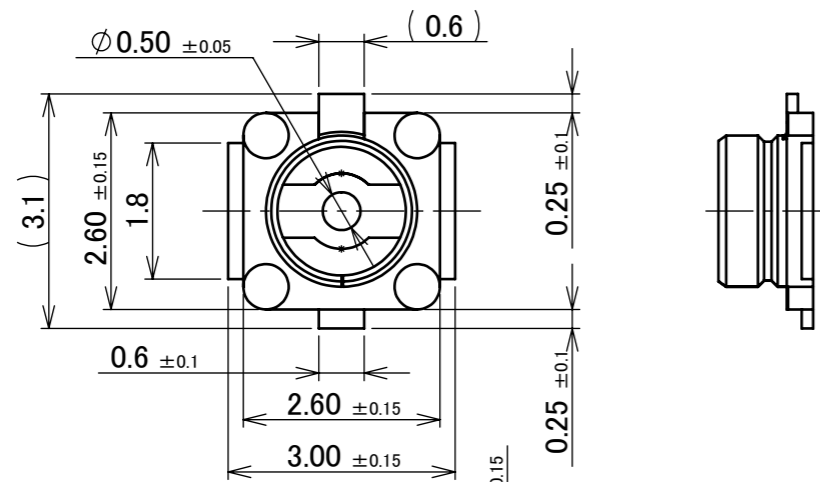
PART NO.	PACKING REEL	QUANTITY IN 1 REEL
20279-001E-01	PLASTIC REEL	2,500
	CORRUGATED PAPER REEL	2,500
20279-001E-03	PLASTIC REEL	5,000
20279-001E-05	PLASTIC REEL	10,000



Halogen Free

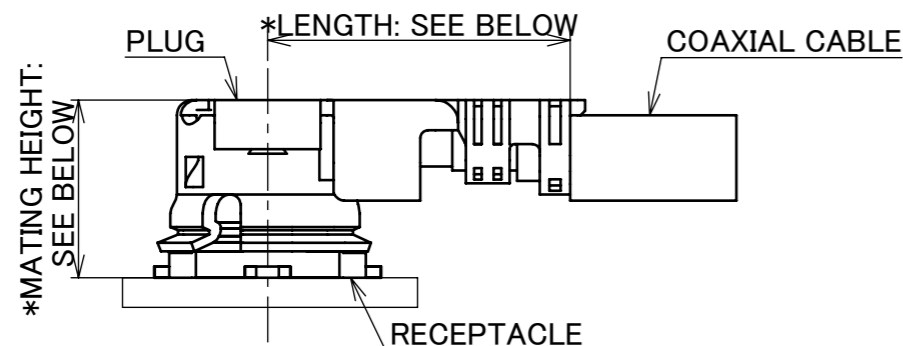


RoHS Compliant



NOTES

- APPLICABLE CONNECTOR PART NO.
20278-11*R-**
20351-***R-37
20631-***R-**
20670-001R-**
20767-001R-20
- COPLANARITY: 0.1mm MAX.
- THIS IS "Pb-FREE" CONNECTOR.



*LENGTH: 4.0±0.4 AT PLUG PART NO. 20670-001R-08, 20670-001R-13, 20670-001R-32
4.7±0.4 AT PLUG PART NO. 20670-001R-18, 20670-001R-37
5.6 AT PLUG PART NO. 20767-001R-20 (REFERENCE DIMENSION)

*MATING HEIGHT: 2.5 MAX. AT PLUG PART NO. 20670-001R-**
(2.9 MAX. AT MHF I LK LOCKED CONDITION)
3.0 MAX. AT PLUG PART NO. 20767-001R-20

MATING CONDITION

NO.	DISCRIPTION	MATERIAL	FINISH , REMARKS
3	GROUND CONTACT	PHOSPHOR BRONZE	ALL OVER Ni 1.00 μ m MIN. CONTACT PART Au 0.05 μ m MIN. SOLDERING PART Au 0.05 μ m MIN.
2	CONTACT	BRASS	ALL OVER Ni 1.00 μ m MIN. CONTACT PART Au 0.10 μ m MIN. SOLDERING PART Au 0.03 μ m MIN.
1	HOUSING	LCP	UL94V-0, WHITE

REV.	ECN	BY	DATE	APP.	APP.	CHK.	DATE	DATE	DATE	PROJECTION	SERIES No.	TITLE	SCALE	UNIT	SIZE	SHEET	REV.
										①	R9	MHF® I RECEPTACLE	10:1	mm	A3	1/9	33
REVISION RECORD					K.Katabuchi					DWG. No. 20279		CUSTOMER COPY					

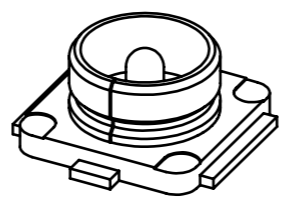
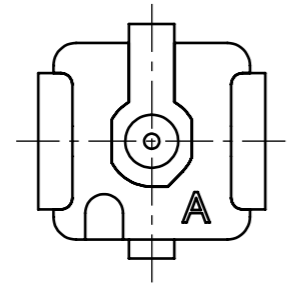
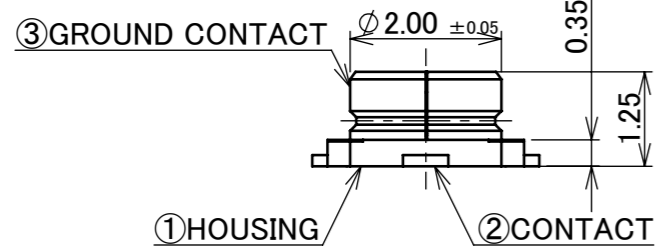
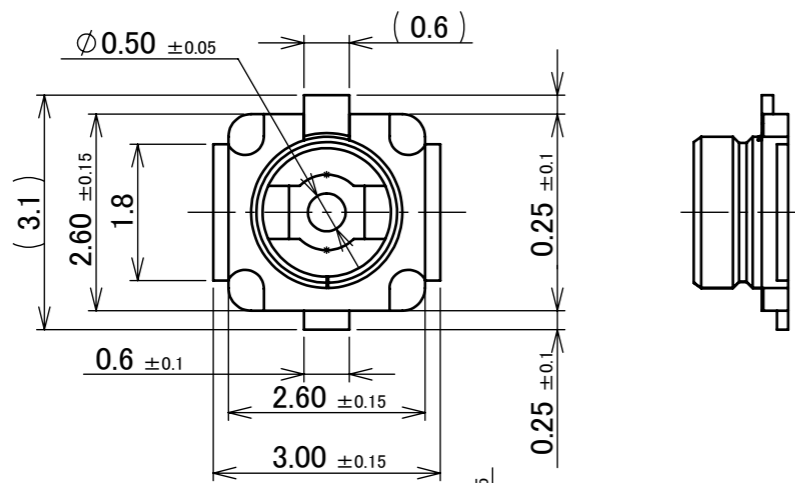
Recommended P/N		20279-001E-03
PART NO.	PACKING REEL	QUANTITY IN 1 REEL
20279-001E-06	PLASTIC REEL	10,000



Halogen Free

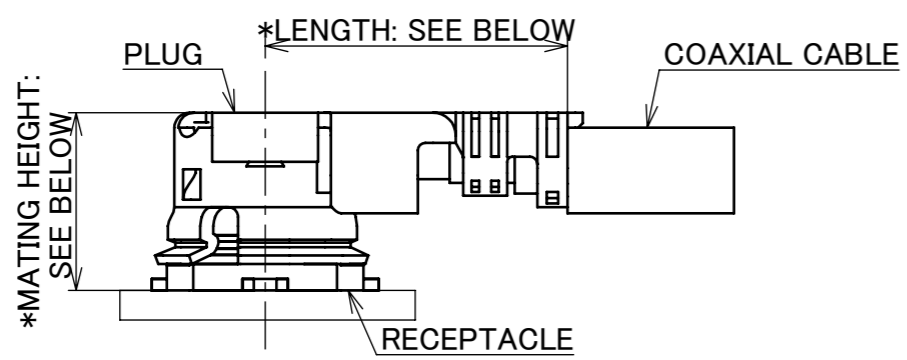


RoHS Compliant



NOTES

- APPLICABLE CONNECTOR PART NO.
20278-11*R-**
20351-***R-37
20631-***R-**
20670-001R-**
20767-001R-20
- COPLANARITY: 0.1mm MAX.
- THIS IS "Pb-FREE" CONNECTOR.



*LENGTH: 4.0±0.4 AT PLUG PART NO. 20670-001R-08, 20670-001R-13, 20670-001R-32
4.7±0.4 AT PLUG PART NO. 20670-001R-18, 20670-001R-37
5.6 AT PLUG PART NO. 20767-001R-20 (REFERENCE DIMENSION)

*MATING HEIGHT: 2.5 MAX. AT PLUG PART NO. 20670-001R-**
(2.9 MAX. AT MHF I LK LOCKED CONDITION)
3.0 MAX. AT PLUG PART NO. 20767-001R-20

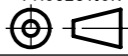
MATING CONDITION

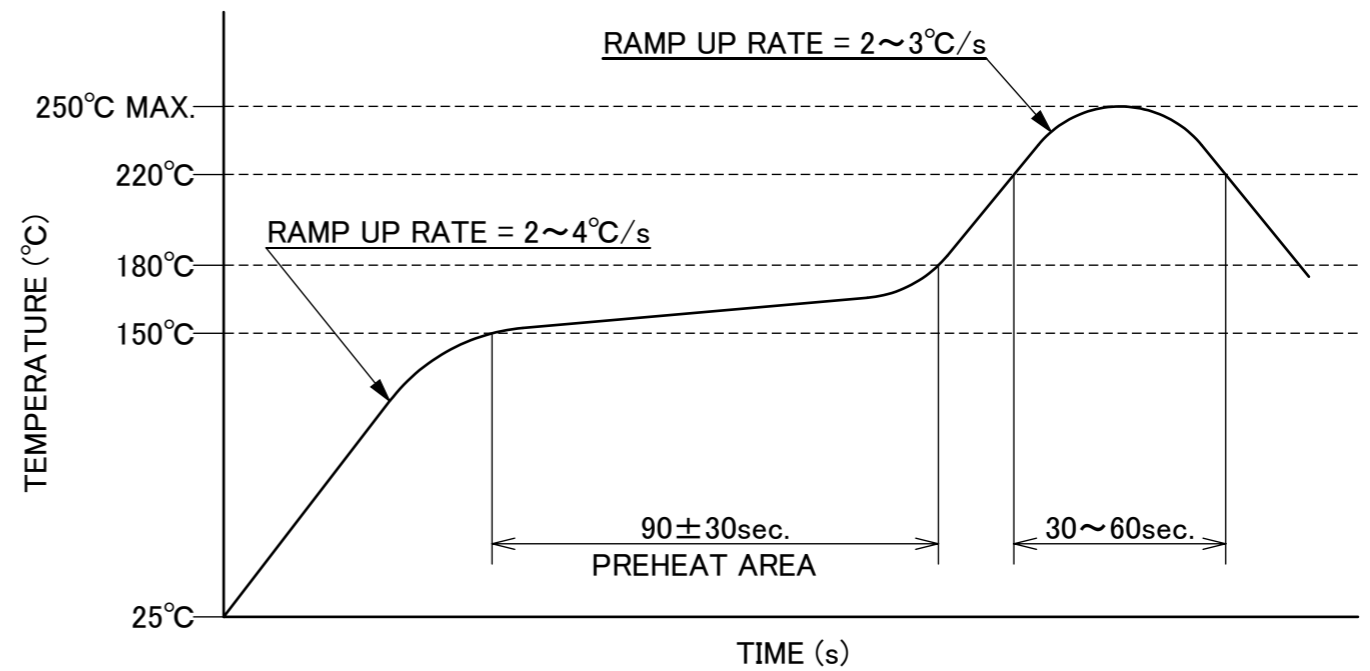
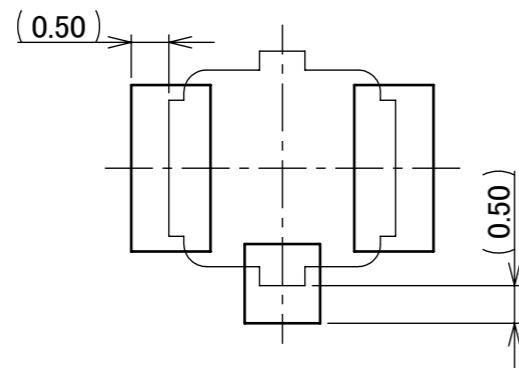
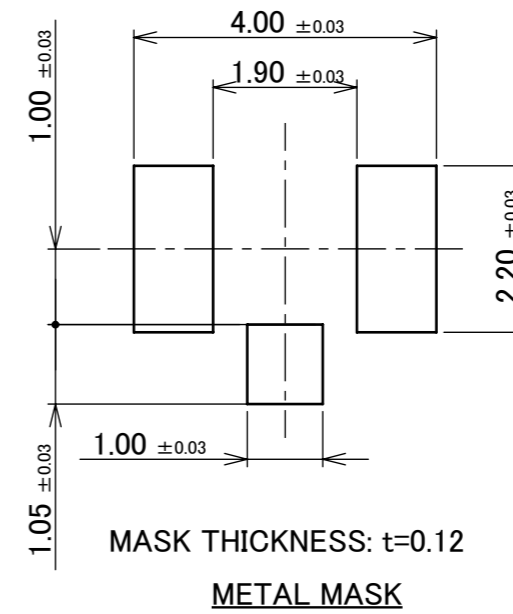
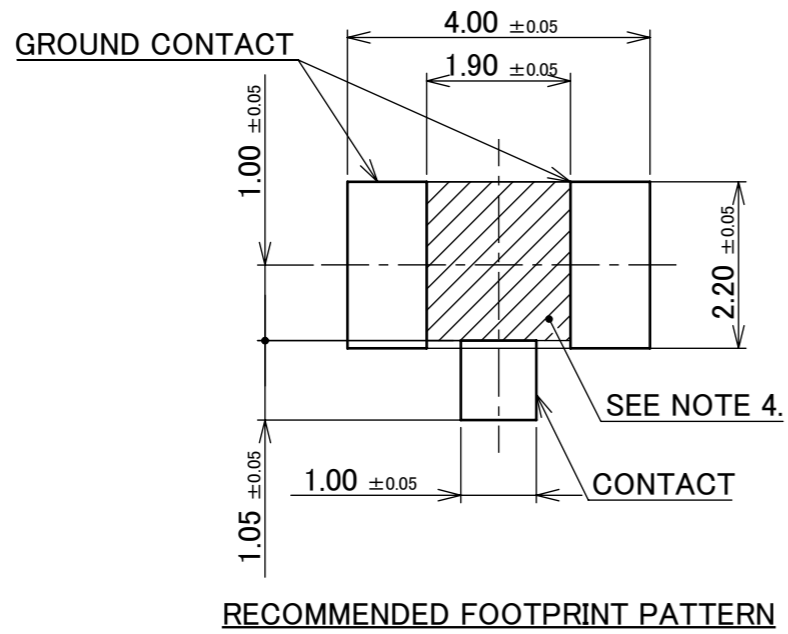
3	GROUND CONTACT	PHOSPHOR BRONZE	ALL OVER Ni 1.00 μm MIN. CONTACT PART Au 0.05 μm MIN. SOLDERING PART Au 0.05 μm MIN.
2	CONTACT	BRASS	ALL OVER Ni 1.00 μm MIN. CONTACT PART Au 0.10 μm MIN. SOLDERING PART Au 0.03 μm MIN.
1	HOUSING	LCP	UL94V-0, WHITE
NO.	DISCRIPTION	MATERIAL	FINISH , REMARKS

ANGLE	±2°	6 OVER 30 MAX.	±0.3	PROJECTION ⊕	SERIES No. R9	CUSTOMER COPY					
6 MAX.	±0.2	30 OVER 120 MAX.	±0.5								
GENERAL TOLERANCE.				TITLE MHF® I RECEPTACLE	SCALE 10:1	I-PEX					
DWG.	DATE								UNIT mm		
CHK.									SIZE	SHEET	REV.
APP.									A3	2/9	33
				DWG. No.	20279						

ITEMS	SPECIFICATION			
RECOMMENDED APPLICABLE CONNECTOR PART NO.	20278-001R-** (MHF I PLUG 1.80, 1.32, 1.13, 0.81)	20351-001R-** (MHF I PLUG 1.37)	20670-001R-** (MHF I PLUG Ni TOP 1.80, 1.37, 1.32, 1.13, 0.81)	20767-001R-20 (MHF I PLUG 2.00)
RATING VOLTAGE	60 V AC (R.M.S)			
RATING FREQUENCY	DC~9GHz			
OPERATING TEMPERATURE	233~363K (-40°C~+90°C)			
VSWR (MATED WITH SMA ADAPTER PART No.90193-002)	RECEPTACLE: 1.30 MAX. AT 0.1~3 GHz, 1.40 MAX. AT 3~6 GHz, 1.80 MAX. AT 6~9 GHz			
MAIN CONTACT RESISTANCE	INITIAL : 20 mohm MAX. AFTER TEST : 25 mohm MAX.		INITIAL : 20 mohm MAX. AFTER TEST : \angle R 20 mohm MAX.	
GROUND CONTACT RESISTANCE	INITIAL : 10 mohm MAX. AFTER TEST : 15 mohm MAX.		INITIAL : 20 mohm MAX. AFTER TEST : \angle R 100 mohm MAX.	
INSULATION RESISTANCE	INITIAL: 500 Mohm MIN. / AFTER TEST: 100 Mohm MIN.			
DIELECTRIC WITHSTANDING VOLTAGE	200 V AC, 1 MINUTE			
DURABILITY	30 CYCLES			
UNMATING FORCE (INITIAL / AFTER TEST)	INITIAL: 5 N MIN. AFTER TEST: 3 N MIN.			
PRODUCT SPECIFICATION	PRS-1676	PRS-1726	PRS-2105	PRS-2490
TEST REPORT	TR-12044	TR-12096	TR-15059	TR-18041
PACKING STANDARD	20279-001E-01: 300-232 (CORRUGATED PAPER REEL) PST-12002 (ANTI-STATIC PLASTIC REEL) 20279-001E-03: 300-850 20279-001E-05: PST-13040 20279-001E-06: PST-13040			
INSTRUCTION MANUAL	HIM-10002			HIM-17017
APPEARANCE CRITERIA No.	QLS-A***			

※UNLESS OTHERWISE SPECIFIED, 20279-001E-01 WILL BE DELIVERED IN CORRUGATED PAPER REELS.
CONTACT YOUR I-PEX SALES IF YOU WISH FOR PLASTIC REELS.

ANGLE	$\pm 2^\circ$	6 OVER 30 MAX.	± 0.3	PROJECTION 	SERIES No. R9	CUSTOMER COPY			
	6 MAX.	± 0.2	30 OVER 120 MAX.			± 0.5	SCALE -	I-PEX	
GENERAL TOLERANCE.						TITLE MHF® I RECEPTACLE	UNIT mm		
DWG.	DATE					DWG. No. 20279	SIZE A3	SHEET 3/9	REV. 33
CHK.									
APP.									



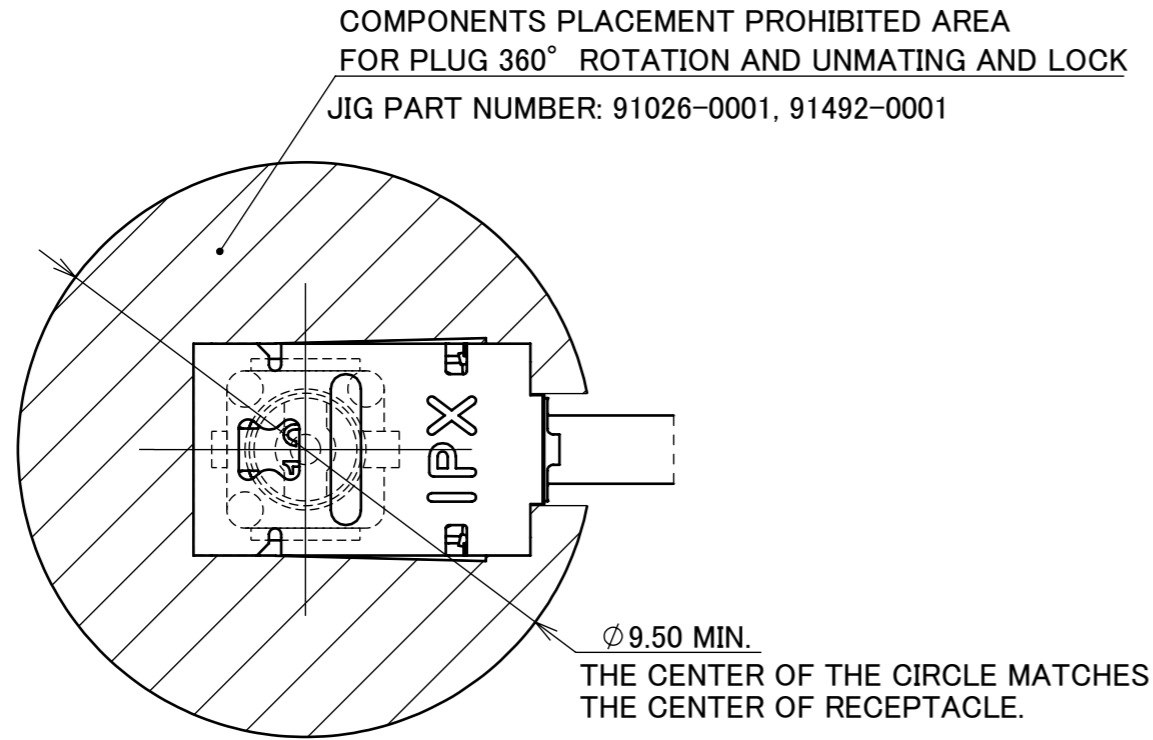
SENJU METAL INDUSTRY CO., LTD. : M705-SHF(Sn96.5 Ag3.0 Cu0.5)

NOTES.
4. NO GROUND, SIGNAL, AND RESIST IN THIS AREA.

ANGLE	±2°	6 OVER 30 MAX.	±0.3	PROJECTION ⊕	SERIES No. R9	CUSTOMER COPY			
	6 MAX.	±0.2	30 OVER 120 MAX.						±0.5
GENERAL TOLERANCE.				TITLE		SCALE	I-PEX		
DWG.	DATE			MHF® I RECEPTACLE		10:1			
CHK.						UNIT			
APP.				DWG. No. 20279		mm			
						SIZE	SHEET	REV.	
						A3	4/9	33	

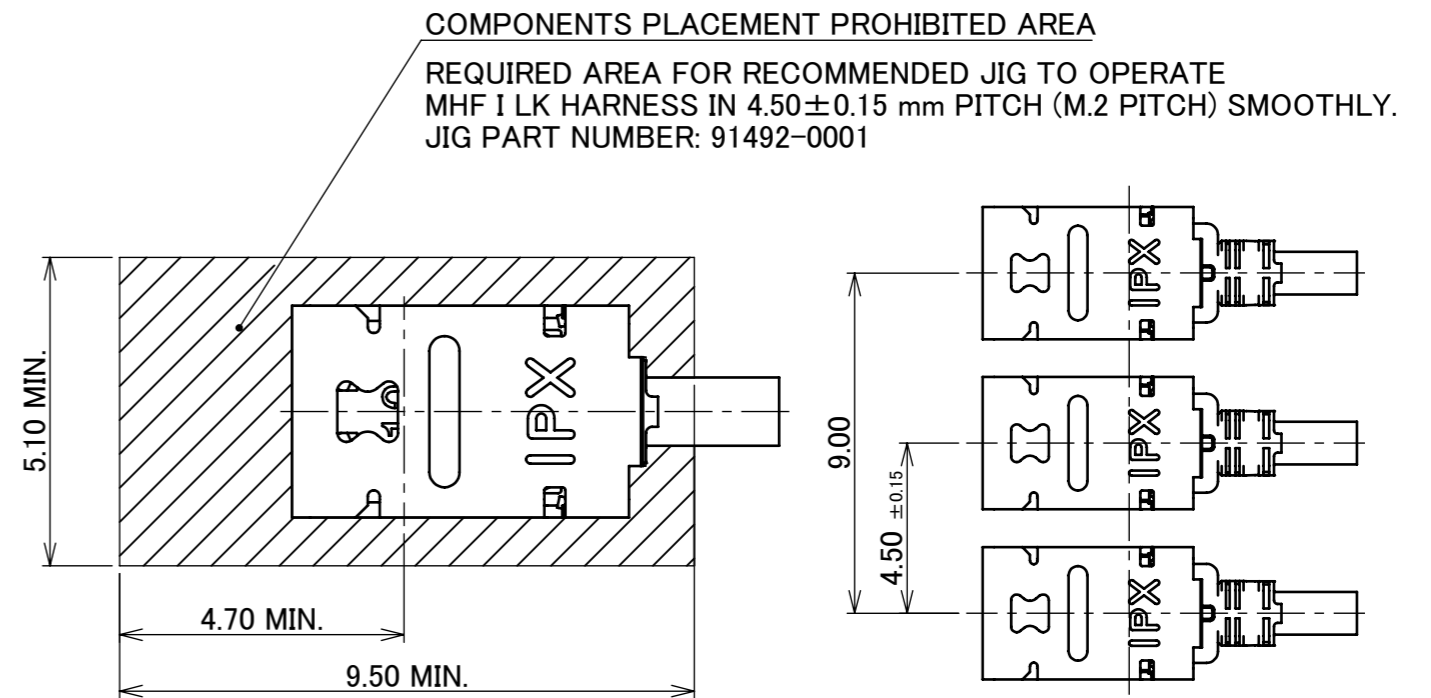
COMPONENT PLACEMENT PROHIBITED AREA FOR MHF I RECEPTACLE MATED WITH MHF I LK HARNESS REQUIRED AREA FOR RECOMMENDED JIG TO OPERATE

SINGLE CONNECTOR LAYOUT



MATING AND LOCK CONDITION
WITH MHF I LK HARNESS

MULTIPLE CONNECTORS LAYOUT



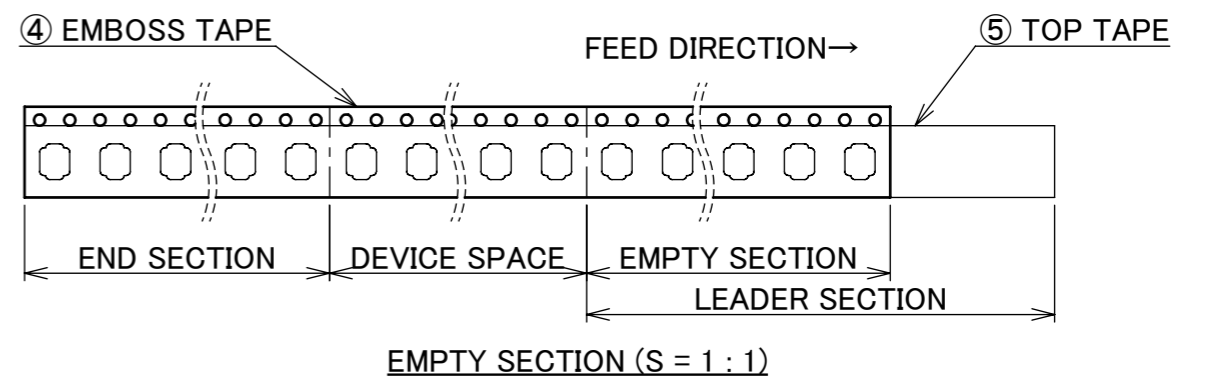
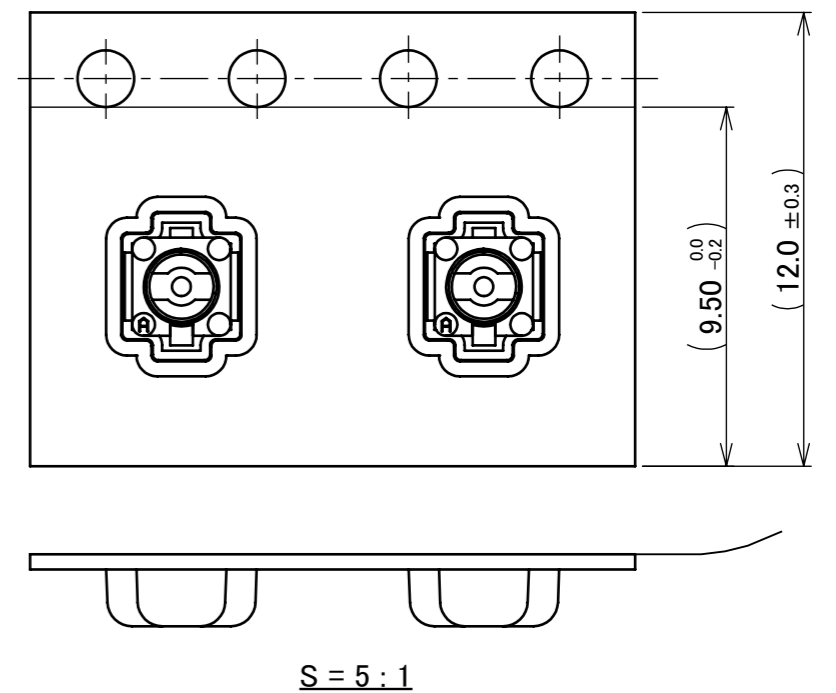
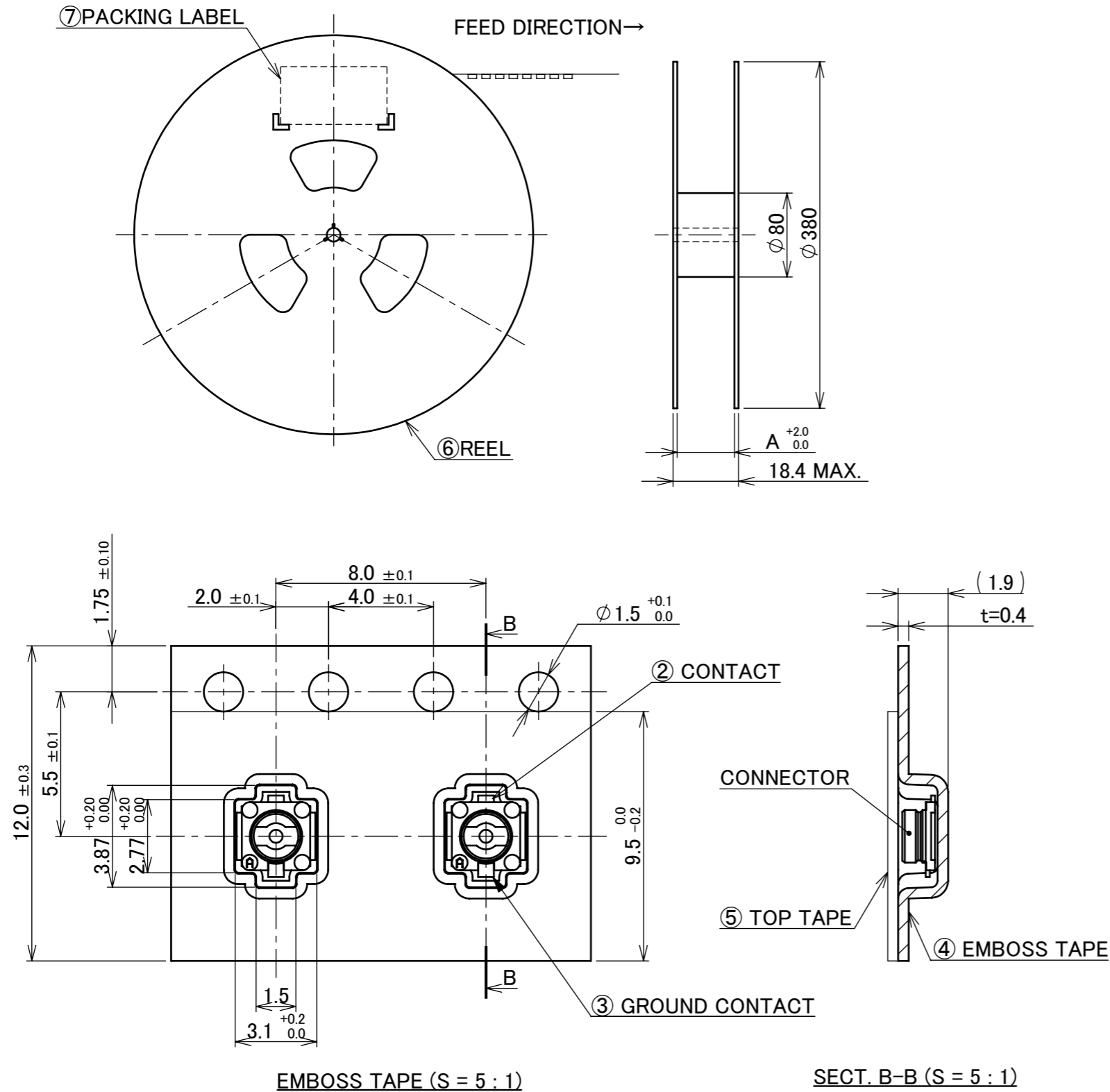
MATING AND LOCK CONDITION
WITH MHF I LK HARNESS NARROW PITCH

MHF I LK HARNESS UNLOCK CONDITION
NARROW PITCH DIMENSIONS
(S = 5 : 1)

ANGLE	±2°	6 OVER 30 MAX.	±0.3	PROJECTION ⊕	SERIES No. R9	CUSTOMER COPY			
6 MAX.	±0.2	30 OVER 120 MAX.	±0.5						
GENERAL TOLERANCE.				TITLE MHF® I RECEPTACLE	DWG. No. 20279	SCALE	I-PEX		
DWG.	DATE					8:1			
CHK.						UNIT			
APP.						mm			
						SIZE	SHEET	REV.	
						A3	5/9	33	

PART NO.	A	QTY. PER EMBOSS REEL (PIECES / REEL)	QTY. PER PACKING CARTON (REELS / CARTON)
20279-001E-01	12.4	2,500 / REEL	8 REELS / CARTON = 20,000 PIECES

※UNLESS OTHERWISE SPECIFIED, 20279-001E-01 WILL BE DELIVERED IN CORRUGATED PAPER REELS.
CONTACT YOUR I-PEX SALES IF YOU WISH FOR PLASTIC REELS.



NOTES.

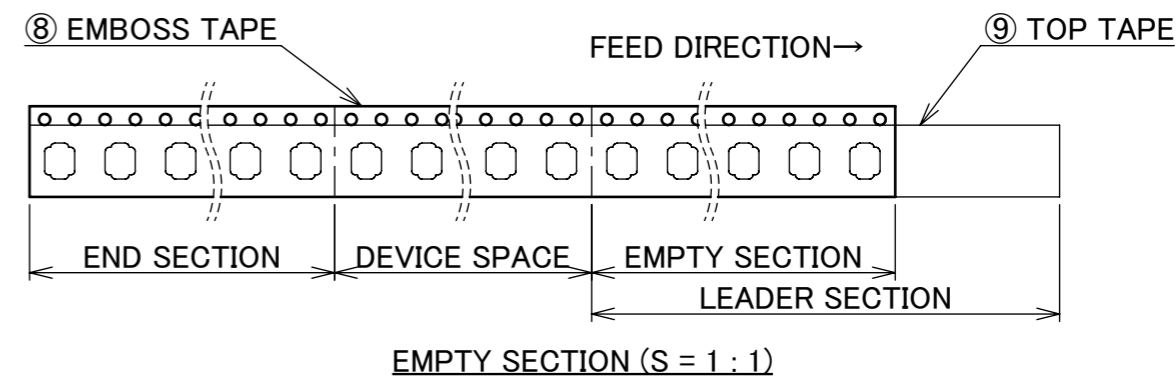
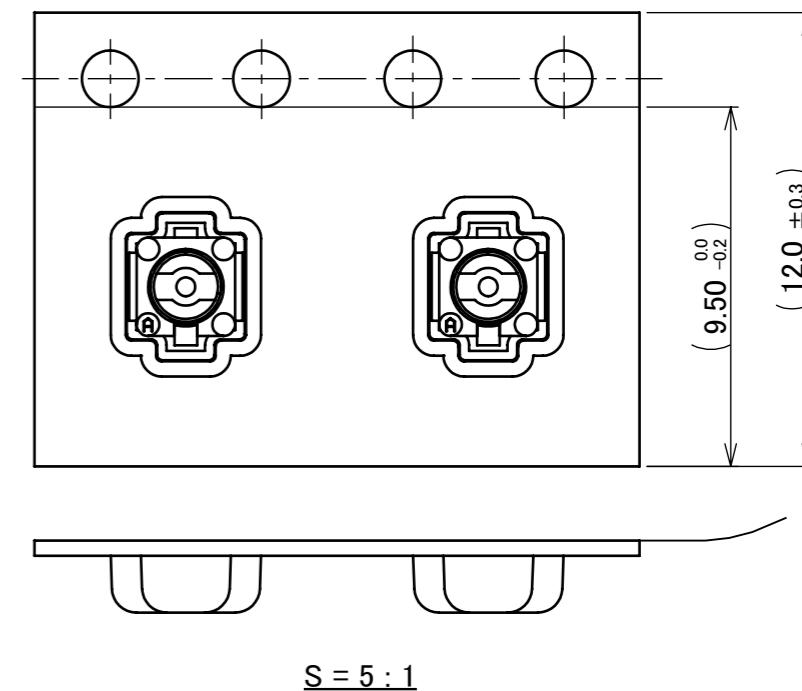
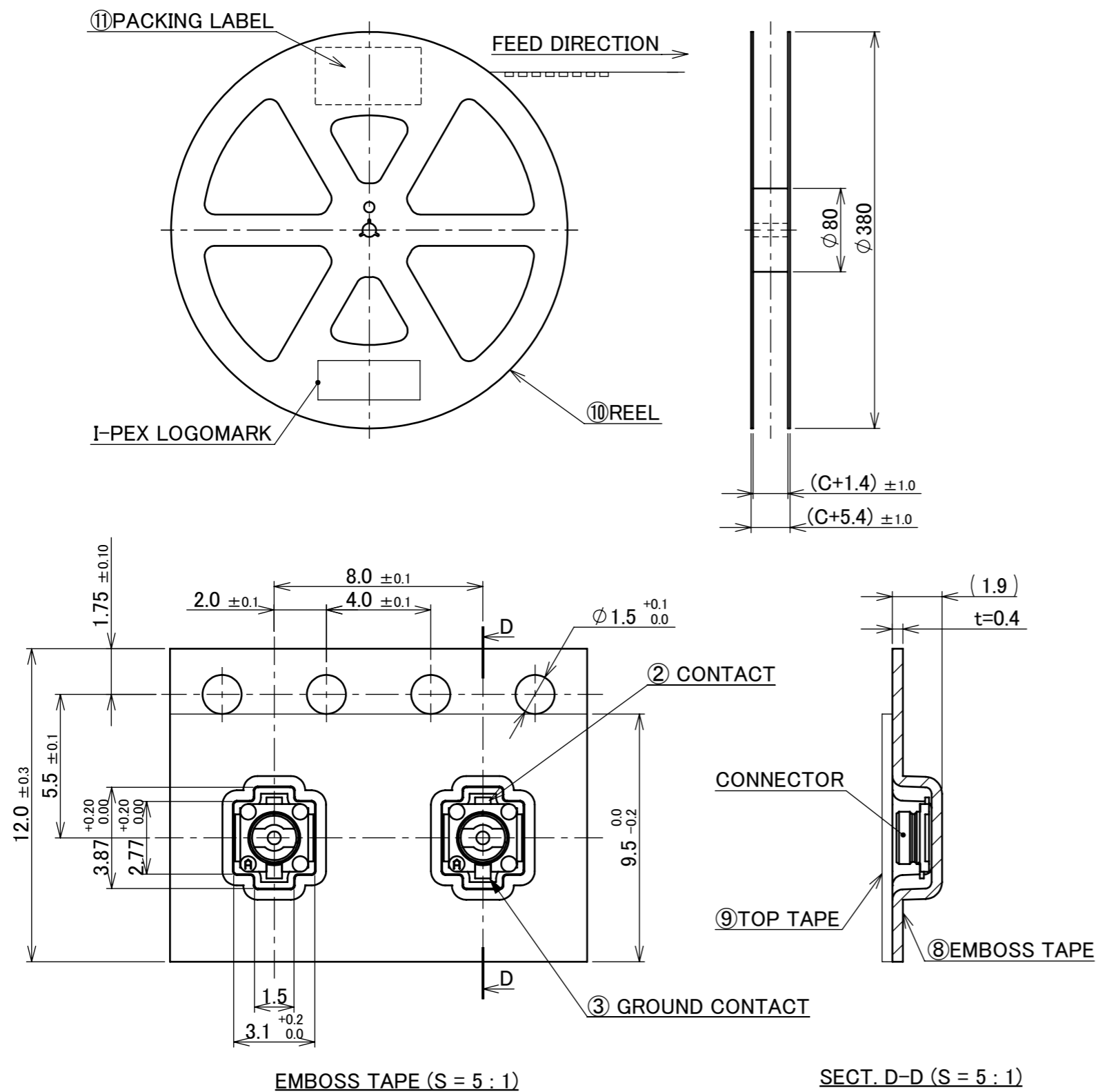
- TAPING SPECIFICATION FOLLOWS JIS C 0806 (IEC 60286-3).
- MAKE EMPTY SECTION OF LEADER AND END ON EACH END OF THE TAPE.
- TOP TAPE SHALL NOT STICK OUT FROM EMBOSS TAPING.
- TOP TAPE SHALL NOT COVER FEED HOLE.

NO.	DISCRIPTION	MATERIAL	FINISH , REMARKS
7	PACKING LABEL	-	-
6	REEL	CORRUGATED PAPER	-
5	TOP TAPE	PET t=0.075	-
4	EMBOSS TAPE	PP t=0.4	-

ANGLE	$\pm 2^\circ$	6 OVER 30 MAX.	± 0.3	PROJECTION	SERIES No.	CUSTOMER COPY			
6 MAX.	± 0.2	30 OVER 120 MAX.	± 0.5		R9	SCALE	I-PEX		
GENERAL TOLERANCE.					TITLE	UNIT			
DWG.	DATE				MHF [®] I RECEPTACLE	mm			
CHK.					DWG. No.	SIZE			
APP.					20279	A3	6/9	33	

PART NO.	C	QTY. PER EMBOSS REEL (PIECES / REEL)	QTY. PER PACKING CARTON (REELS / CARTON)
20279-001E-01	12.0	2,500 / REEL	8 REELS / CARTON = 20,000 PIECES
20279-001E-03		5,000 / REEL	8 REELS / CARTON = 40,000 PIECES

※UNLESS OTHERWISE SPECIFIED, 20279-001E-01 WILL BE DELIVERED IN CORRUGATED PAPER REELS.
CONTACT YOUR I-PEX SALES IF YOU WISH FOR PLASTIC REELS.

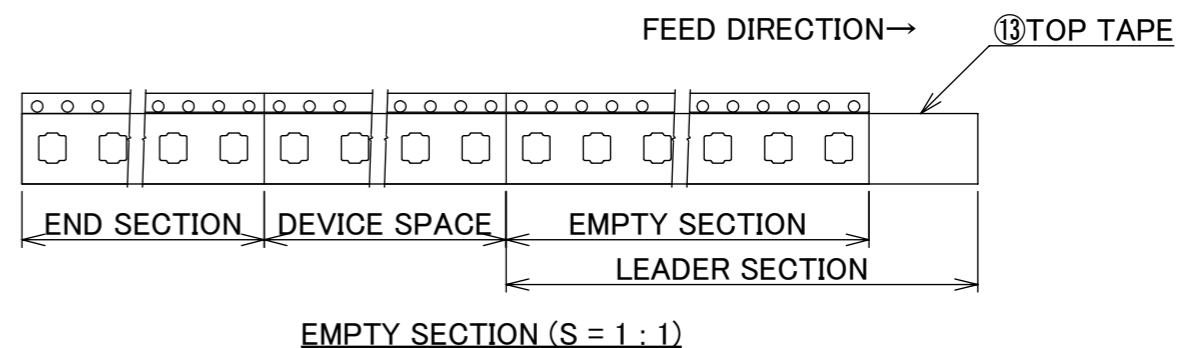
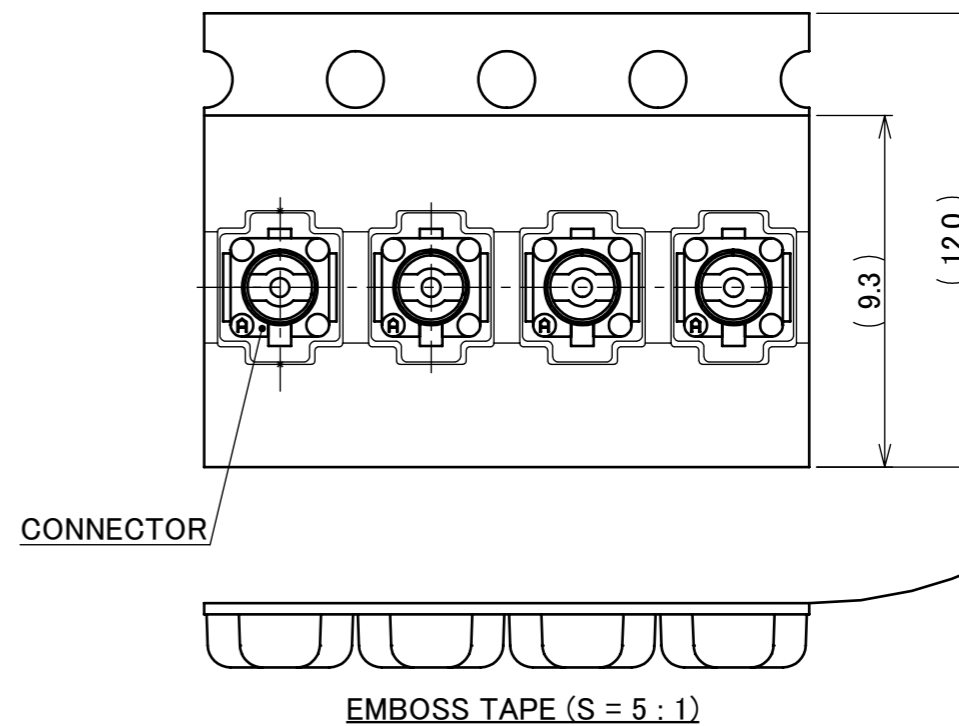
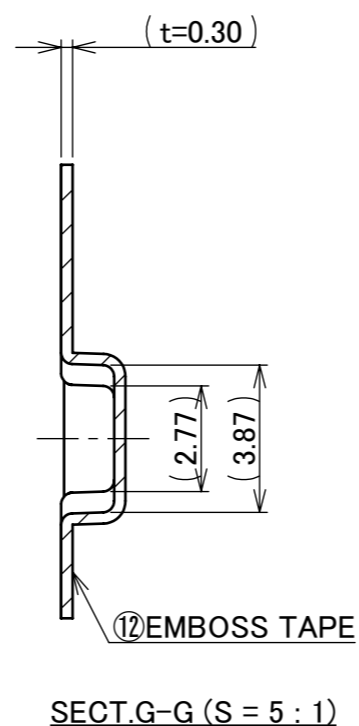
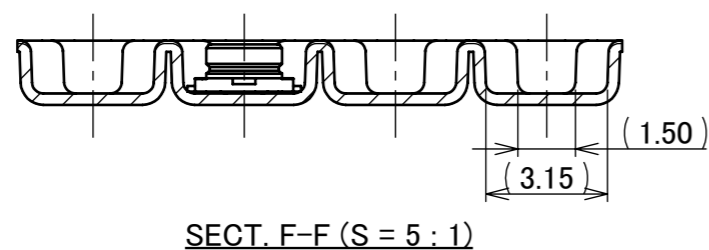
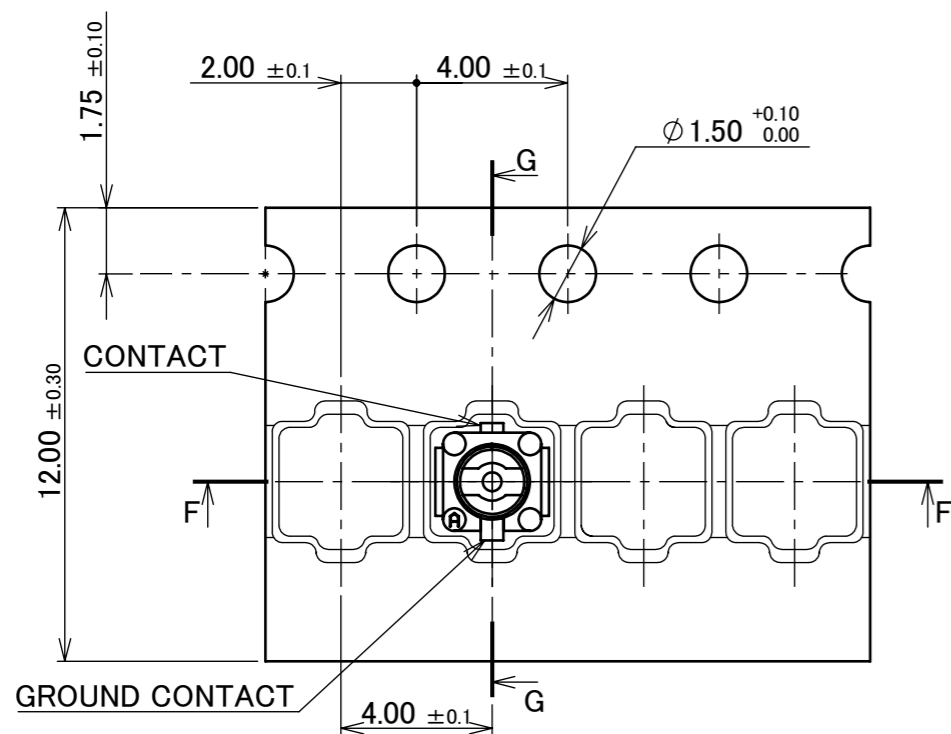
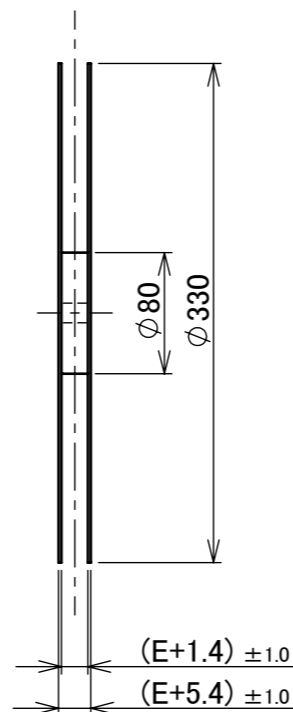
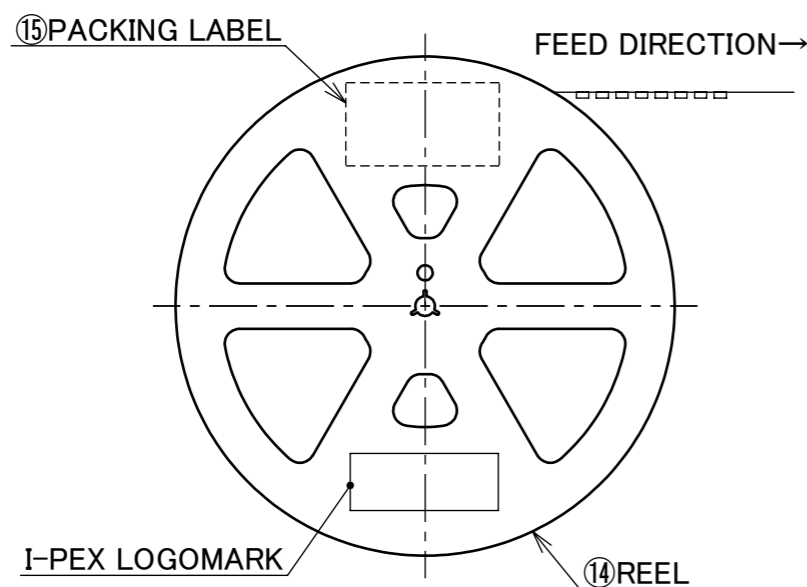


- NOTES.
9. TAPING SPECIFICATION FOLLOWS JIS C 0806 (IEC 60286-3).
10. MAKE EMPTY SECTION OF LEADER AND END ON EACH END OF THE TAPE.
11. TOP TAPE SHALL NOT STICK OUT FROM EMBOSSED TAPING.
12. TOP TAPE SHALL NOT COVER FEED HOLE.

NO.	DISCRIPTION	MATERIAL	FINISH , REMARKS
11	PACKING LABEL	-	-
10	REEL	PS ESD SAFE TYPE	-
9	TOP TAPE	PET t=0.075	-
8	EMBOSS TAPE	PP t=0.4	-

ANGLE	$\pm 2^\circ$	6 OVER 30 MAX.	± 0.3	PROJECTION	SERIES No.	CUSTOMER COPY							
6 MAX.	± 0.2	30 OVER 120 MAX.	± 0.5		R9	SCALE	I-PEX						
GENERAL TOLERANCE.						TITLE				1:X			
DWG.	DATE					MHF [®] I RECEPTACLE				UNIT	mm		
CHK.						DWG. No.				SIZE	SHEET	REV.	
APP.						20279	A3	7/9	33				

PART NO.	E	QUANTITY PER EMBOSS REEL (PIECES / REEL)	QUANTITY PER PACKING CARTON (REELS / CARTON)
20279-001E-05	12.0	10,000 / REEL	8 REELS / CARTON = 80,000 PIECES
20279-001E-06	12.0	10,000 / REEL	8 REELS / CARTON = 80,000 PIECES



NOTES.

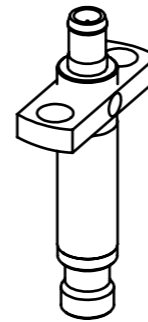
- 13. TAPING SPECIFICATION FOLLOWS JIS C 0806 (IEC 60286-3).
- 14. MAKE EMPTY SECTION OF LEADER AND END ON EACH END OF THE TAPE.
- 15. TOP TAPE SHALL NOT STICK OUT FROM EMBOSSED TAPING.
- 16. TOP TAPE SHALL NOT COVER FEED HOLE.

NO.	DISCRIPTION	MATERIAL	FINISH , REMARKS
15	PACKING LABEL	-	-
14	REEL	PS	ANTI-STATIC TYPE
13	TOP TAPE	PET	ANTI-STATIC TYPE HEAT ACTIVATED COVER
12	EMBOSS TAPE	PS	ANTI-STATIC TYPE

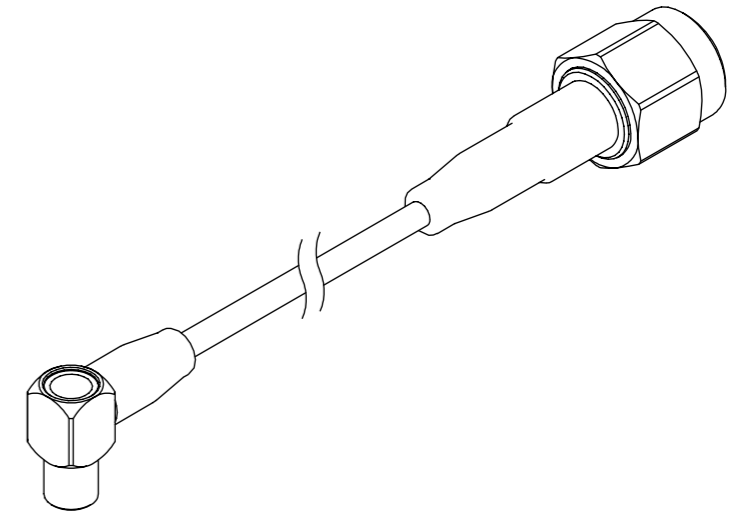
ANGLE	$\pm 2^\circ$	6 OVER 30 MAX.	± 0.3	PROJECTION	SERIES No.	CUSTOMER COPY				
6 MAX.	± 0.2	30 OVER 120 MAX.	± 0.5		R9	SCALE				
GENERAL TOLERANCE.						TITLE MHF® I RECEPTACLE	UNIT			
DWG.	DATE						mm			
CHK.							I-PEX			
APP.							SIZE	SHEET	REV.	
						DWG. No.	20279	A3	8/9	33



MHF I SMA ADAPTER
PART NO. 90193-002



MHF I RECEPTACLE HIGH CYCLE N45 C ADAPTER
PART NO. 90575-0001



MHF SERIES N45 C TO SMA ADAPTER CABLE
PART NO. 90577-****

* 90575-0001 AND 90577-**** SHOULD BE USED TOGETHER.

ANGLE	±2°	6 OVER 30 MAX.	±0.3	PROJECTION ⊕	SERIES No. R9	CUSTOMER COPY		
6 MAX.	±0.2	30 OVER 120 MAX.	±0.5					
GENERAL TOLERANCE.				TITLE MHF® I RECEPTACLE	SCALE 2:1	UNIT I-PEX		
DWG.	DATE							
CHK.								
APP.								
				DWG. No.	20279	SIZE A3	SHEET 9/9	REV. 33