

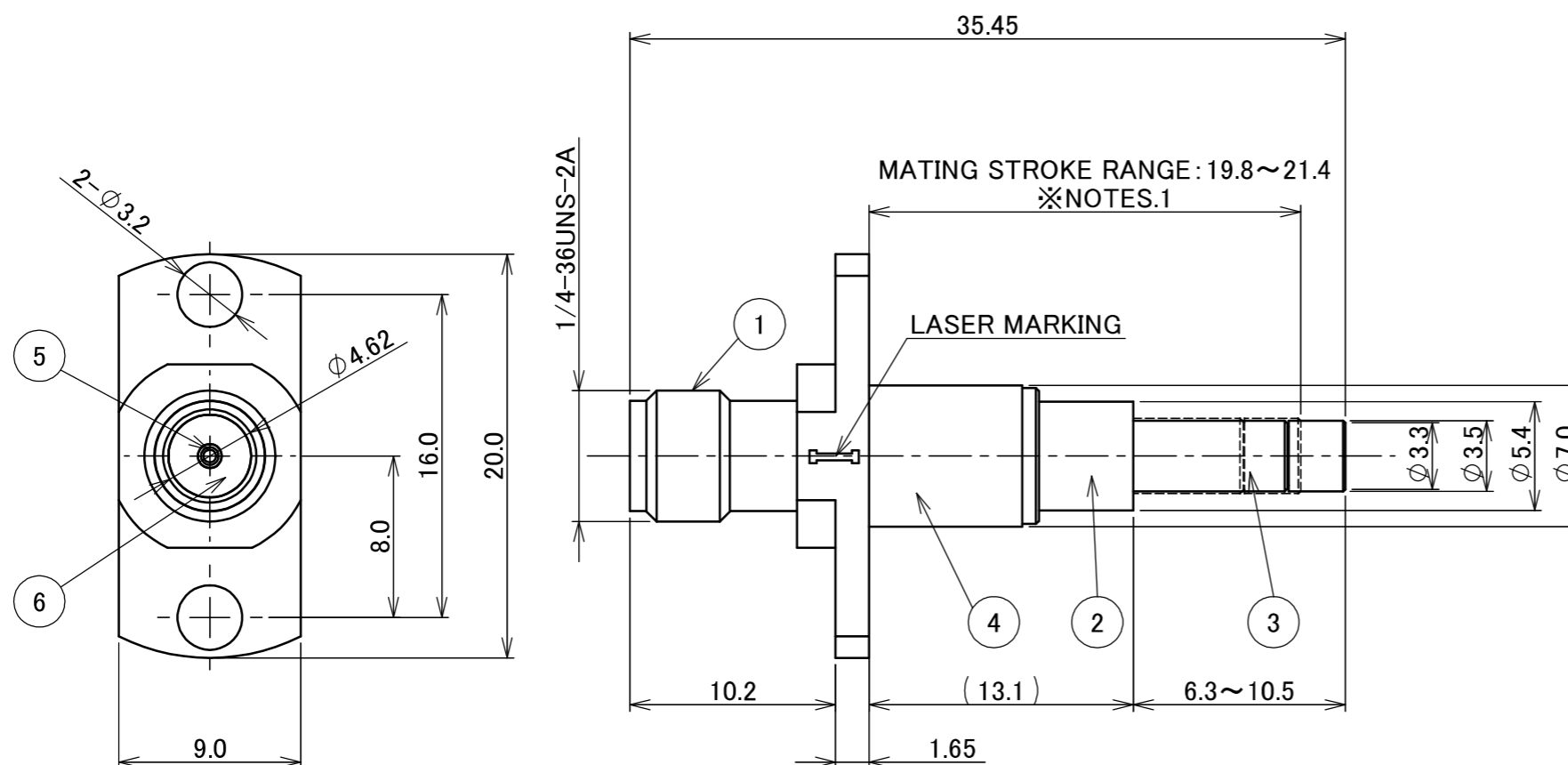
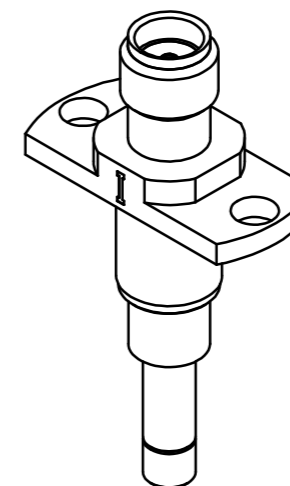
PART NO.
90539-001



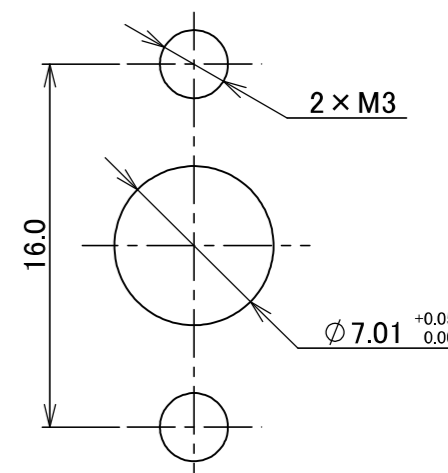
Halogen Free



RoHS Compliant

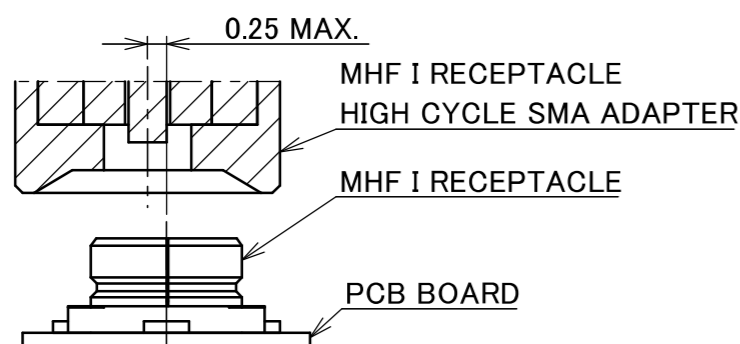


【RECOMMEND PANEL CUTOUT】



NOTES

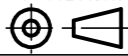

1. WHEN MATING ADAPTER TO CONNECTOR, MATING STROKE LENGTH NEEDS TO BE IN RANGE OF 21.4mm TO 19.8mm FROM EDGE OF FLANGE(EDGE CLOSER TO TIP OF PROBE) TO TIP OF PROBE.
2. AXIAL MISALIGNMENT DISTANCE : 0.25mm MAX.



NO.	DESCRIPTION	MATERIAL	FINISH , REMARKS
7	CONTACT PROBE	PHOSPHOR BRONZE	RHODIUM & Au
6	INSULATOR	PTFE	
5	SOCKET CONTACT	BERYLLIM COPPER	Au 1.0 μ m MIN. OVER Ni 2.0 μ m MIN.
4	GROUND BODY	BRASS	Au 1.0 μ m MIN. OVER Ni 2.0 μ m MIN.
3	OUTER CONTACT-B	STAINLESS STEEL	Au 1.0 μ m MIN. OVER Ni 2.0 μ m MIN.
2	OUTER CONTACT-A	STAINLESS STEEL	PASSIVED STAINLESS STEEL
1	SHELL	STAINLESS STEEL	PASSIVED STAINLESS STEEL

REV.	ECN	BY	DATE	APP.	APP.	CHK.	DATE	ANGLE	±2°	6 OVER 30 MAX.	±0.3	PROJECTION	SERIES No.	CUSTOMER COPY			
4	Z211527	K.W	2021/12/13	M.T	6 MAX.	±0.2	30 OVER 120 MAX.	±0.5				⊕	R0				
3	Z190611	K.I	2019/05/07	Y.H	GENERAL TOLERANCE.												
2	Z150794	Y.H	2015/07/13	Tom	DWG.												
1	Z12521	S.M	2012/06/28	Tom	Y.Hashimoto												
0	Z11078	Y.H	2011/03/01		T.Takano												
REVISION RECORD					T.Harada												
												TITLE	MHF® I RECEPTACLE HIGH CYCLE SMA ADAPTER	SCALE	5:1	I-PEX	
												DWG. No.	90539	SIZE	A3		
														SHEET	1/2		REV.

ITEMS	SPECIFICATION
APPLICABLE CONNECTOR PART No.	MHF I :20279-001E-0*, 20314-001E-01* 20431-001E-0*, 20441-001E-01 MHF-A:20429-001E
RATING FREQUENCY	DC~9GHz
NOMINAL CHARACTERISTIC IMPEDANCE	50ohm
OPERATING TEMPERATURE	233~363K(-40°C~+90°C)
VSWR (MATING WITH 90193-001 AND 90539-001)	1.3 MAX. (DC~3GHz), 1.5 MAX.(3GHz~6GHz), 2.5 MAX.(6GHz~9GHz)
INSULATION RESISTANCE	500Mohm MIN.(DC100V)
DIELECTRIC WITHSTANDING VOLTAGE	AC300V 1min
DURABILITY	10,000CYCLES
PRODUCT SPECIFICATION	-
TEST REPORT	-
PACKING STANDARD	PST-14081
INSTRUCTION MANUAL	HIM-16015
APPEARANCE CRITERIA No.	QLS-A***

ANGLE	±2°	6 OVER 30 MAX.	±0.3	PROJECTION 	SERIES No. R0	CUSTOMER COPY		
6 MAX.	±0.2	30 OVER 120 MAX.	±0.5					
GENERAL TOLERANCE.				TITLE MHF® I RECEPTACLE HIGH CYCLE SMA ADAPTER	SCALE 5:1 UNIT mm			
DWG.	DATE							
CHK.								
APP.								
				DWG. No.	90539	SIZE A3	SHEET 2/2	REV. 4