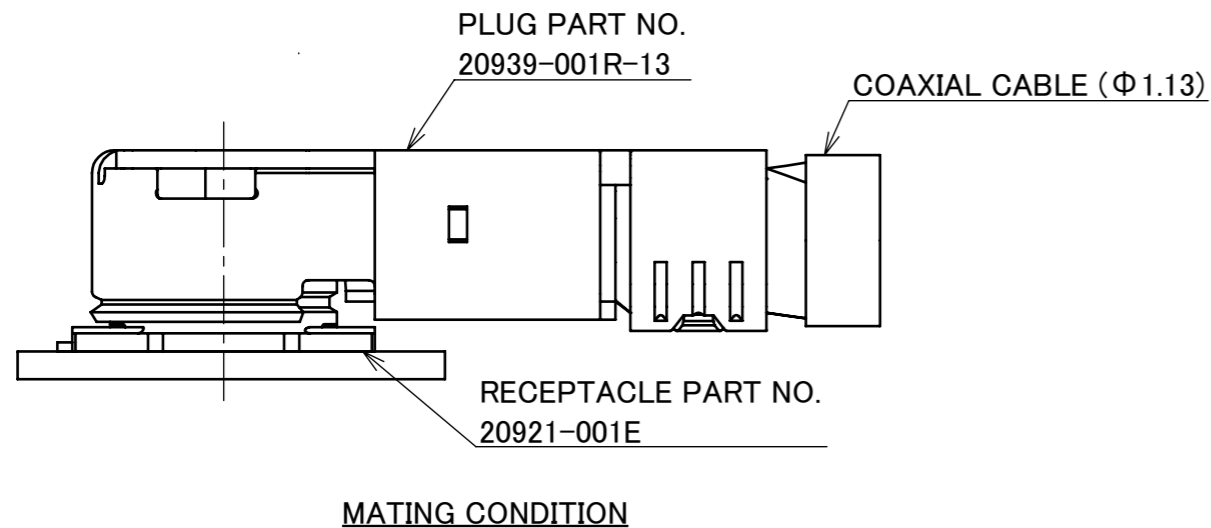
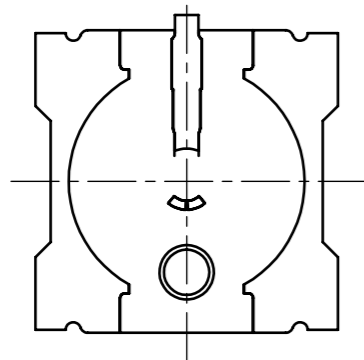
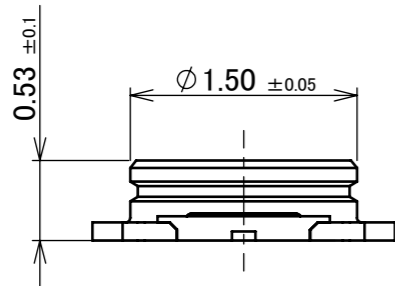
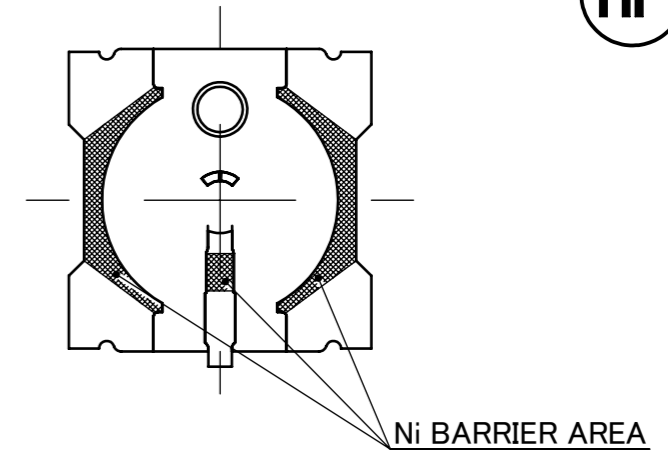
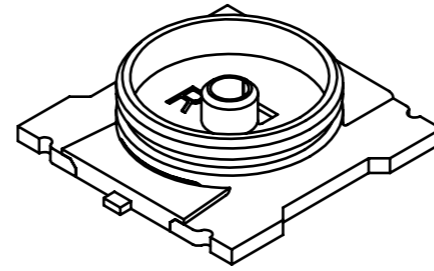
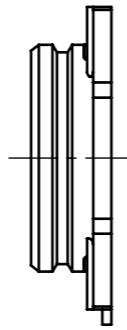
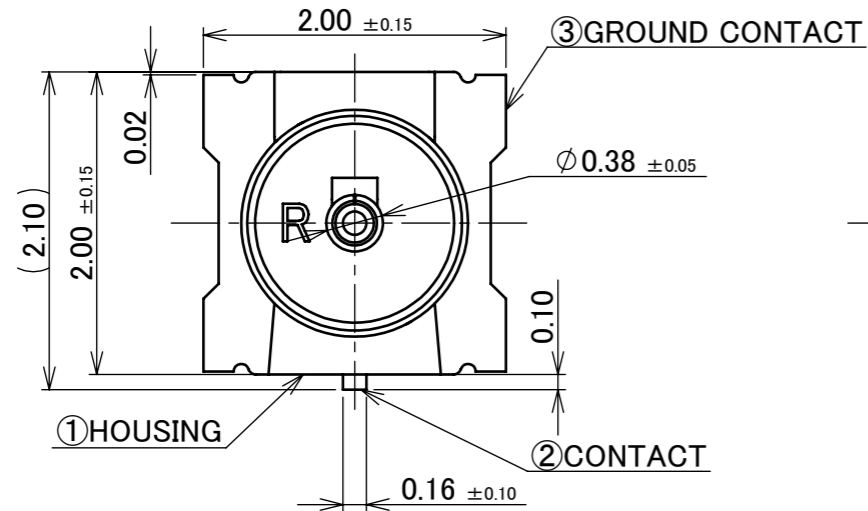
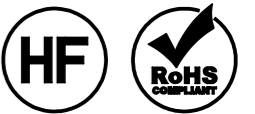


PART NO.
20921-001E



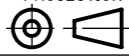
NOTES

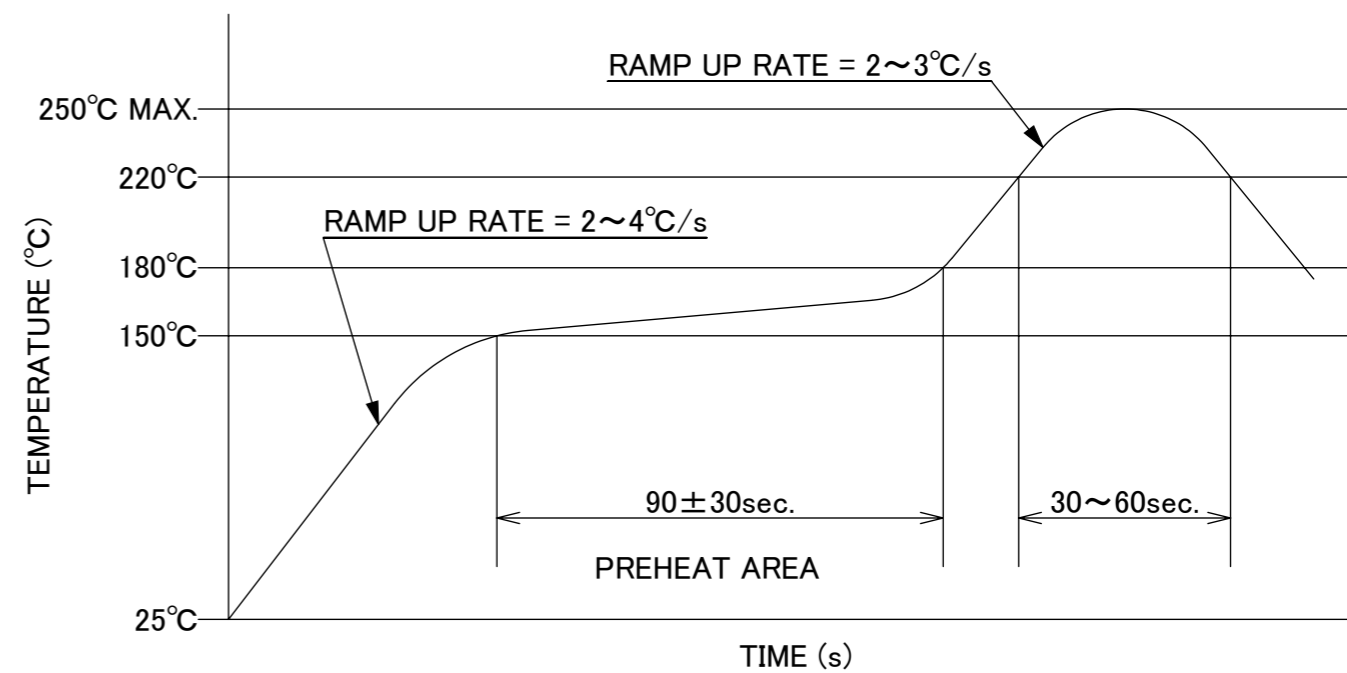
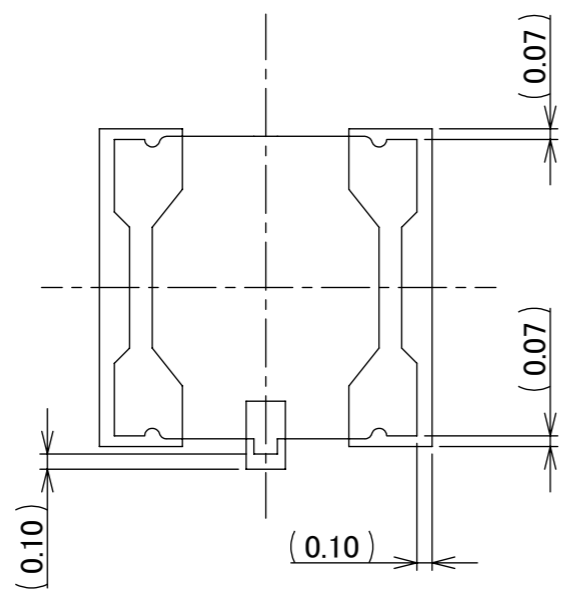
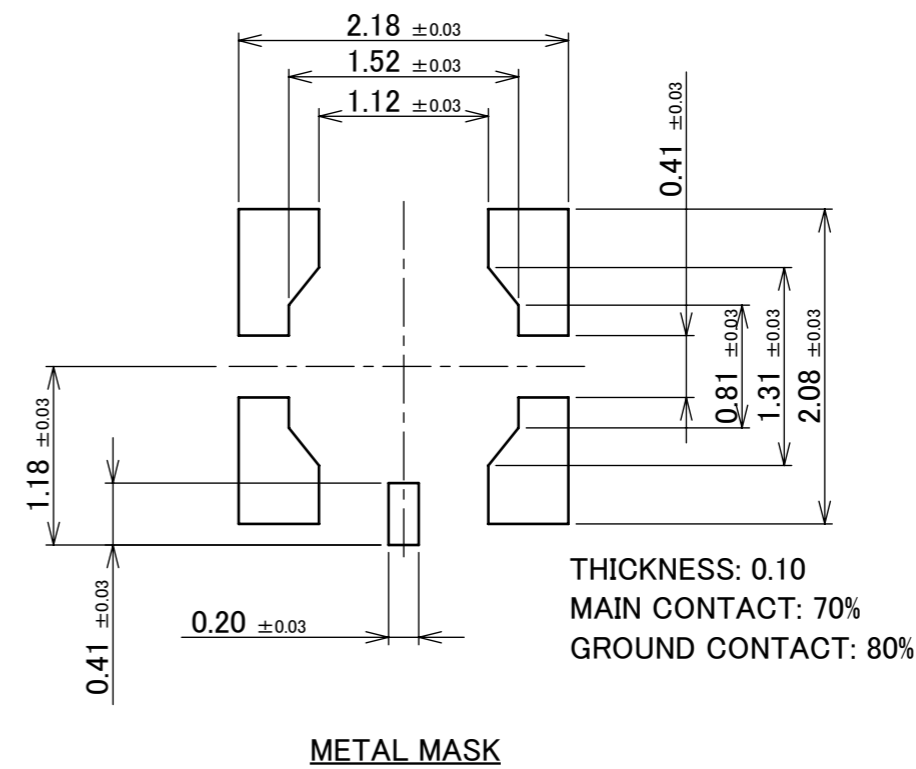
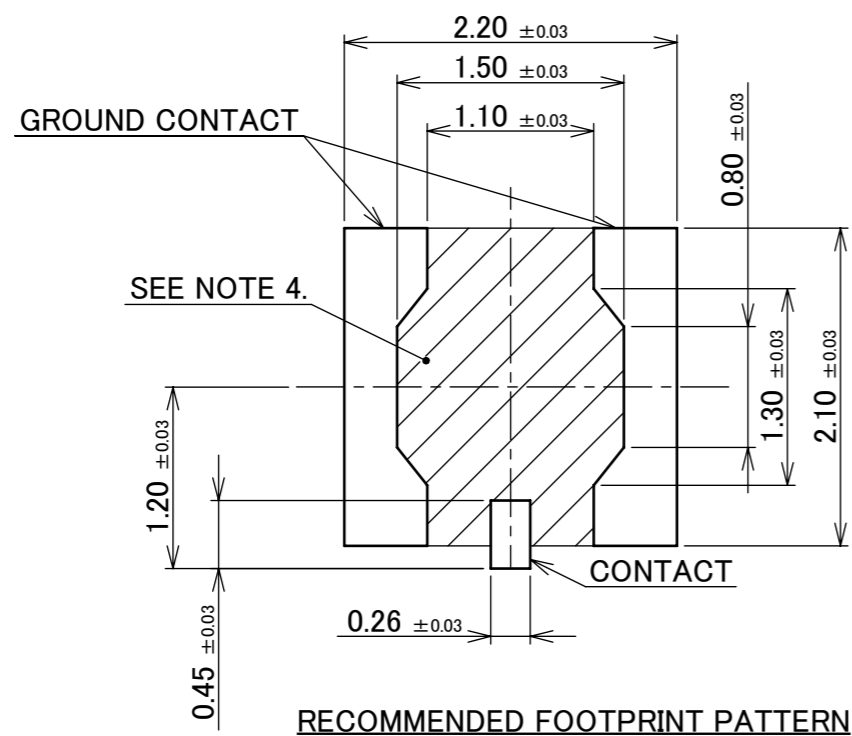
1. APPLICABLE CONNECTOR  
20939-001R-13
2. COPLANARITY: 0.08mm MAX.
3. CHARACTERISTIC IMPEDANCE: 50 Ω (NOMINAL VALUE)

3	GROUND CONTACT	PHOSPHOR BRONZE	ALL OVER: Ni 1.00 μm MIN. CONTACT PART: Au 0.05 μm MIN. SOLDERING PART Au AREA: 0.02 μm MIN.
2	CONTACT	CORSON ALLOY	ALL OVER: Ni 1.00 μm MIN. CONTACT PART: Au 0.1 μm MIN. SOLDERING PART Au AREA: 0.02 μm MIN.
1	HOUSING	LCP	UL94V-0, WHITE
NO.	DESCRIPTION	MATERIAL	FINISH , REMARKS

5	Z201307	Y.I	2020/12/23	Hiro	ANGLE	±2°	6 OVER 30 MAX.	±0.3	PROJECTION ⊕	SERIES No. R3	CUSTOMER COPY	
4	Z200153	Y.I	2020/02/07	Hiro	6 MAX.	±0.2	30 OVER 120 MAX.	±0.5				
3	Z191627	Y.I	2019/12/13	Hiro	GENERAL TOLERANCE.				TITLE MHF® 7 RECEPTACLE	SCALE 20:1 UNIT mm	I-PEX	
2	Z191503	Y.I	2019/11/21	Hiro	DWG.	DATE		2019/06/28				
1	Z191279	Y.I	2019/09/25	Hiro	Y.Imaji							
0	Z190858	Y.I	2019/06/28		CHK.	H.Nakamura						
REV.	ECN	BY	DATE	APP.	APP.	Hiro Takahashi		DWG. No.	20921	SIZE	SHEET	REV.
REVISION RECORD					Hiro Takahashi		20921		A3	1/5	5	

ITEMS	SPECIFICATION
APPLICABLE CONNECTOR PART No.	20939-001R-13
RATING VOLTAGE	60 V AC (R.M.S)/DC
RATING FREQUENCY	DC~43.5 GHz
OPERATING TEMPERATURE	233~363 K (-40°C~+90°C)
OPERATING HUMIDITY	90% MAX. (NON-CONDENSING)
CHARACTERISTIC IMPEDANCE	50 ohm (NOMINAL VALUE)
VSWR	1.433 MAX. AT 0.1 ~ 1.0 GHz, 1.671 MAX. AT 24.25 ~ 43.50 GHz
MAIN CONTACT RESISTANCE	INITIAL : 20 mohm MAX. / AFTER TEST : $\Delta$ R 20 mohm MAX.
GROUND CONTACT RESISTANCE	INITIAL : 20 mohm MAX. / AFTER TEST : $\Delta$ R 20 mohm MAX.
INSULATION RESISTANCE	INITIAL : 500 Mohm MIN. / AFTER TEST : 100 Mohm MIN.
DIELECTRIC WITHSTANDING VOLTAGE	AC200V 1min
DURABILITY	20 CYCLES
MATING FORCE (INITIAL / AFTER TEST)	INITIAL: 25N MAX., 5N MIN. (VERTICAL DIRECTION) AFTER TEST: 25N MAX., 5N MIN. (VERTICAL DIRECTION)
UNMATING FORCE (INITIAL / AFTER TEST)	INITIAL: 15N MAX., 5N MIN. (VERTICAL DIRECTION) AFTER TEST: 15N MAX., 5N MIN. (VERTICAL DIRECTION)
CRIMP STRENGTH	5N MIN.
PRODUCT SPECIFICATION	PRS-2574
TEST REPORT	TR-19022
PACKING STANDARD	PST-18124
INSTRUCTION MANUAL	HIM-19008
APPEARANCE CRITERIA No.	QLS-A***

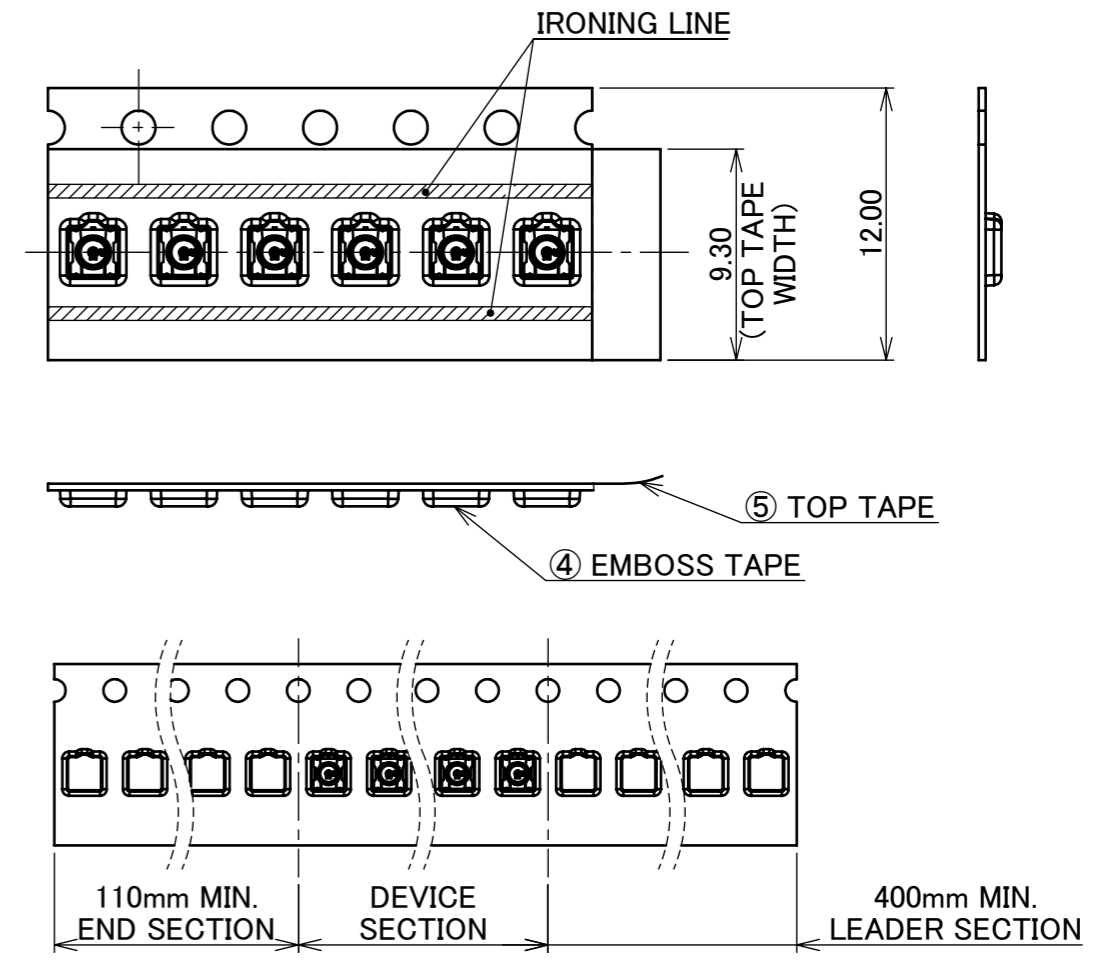
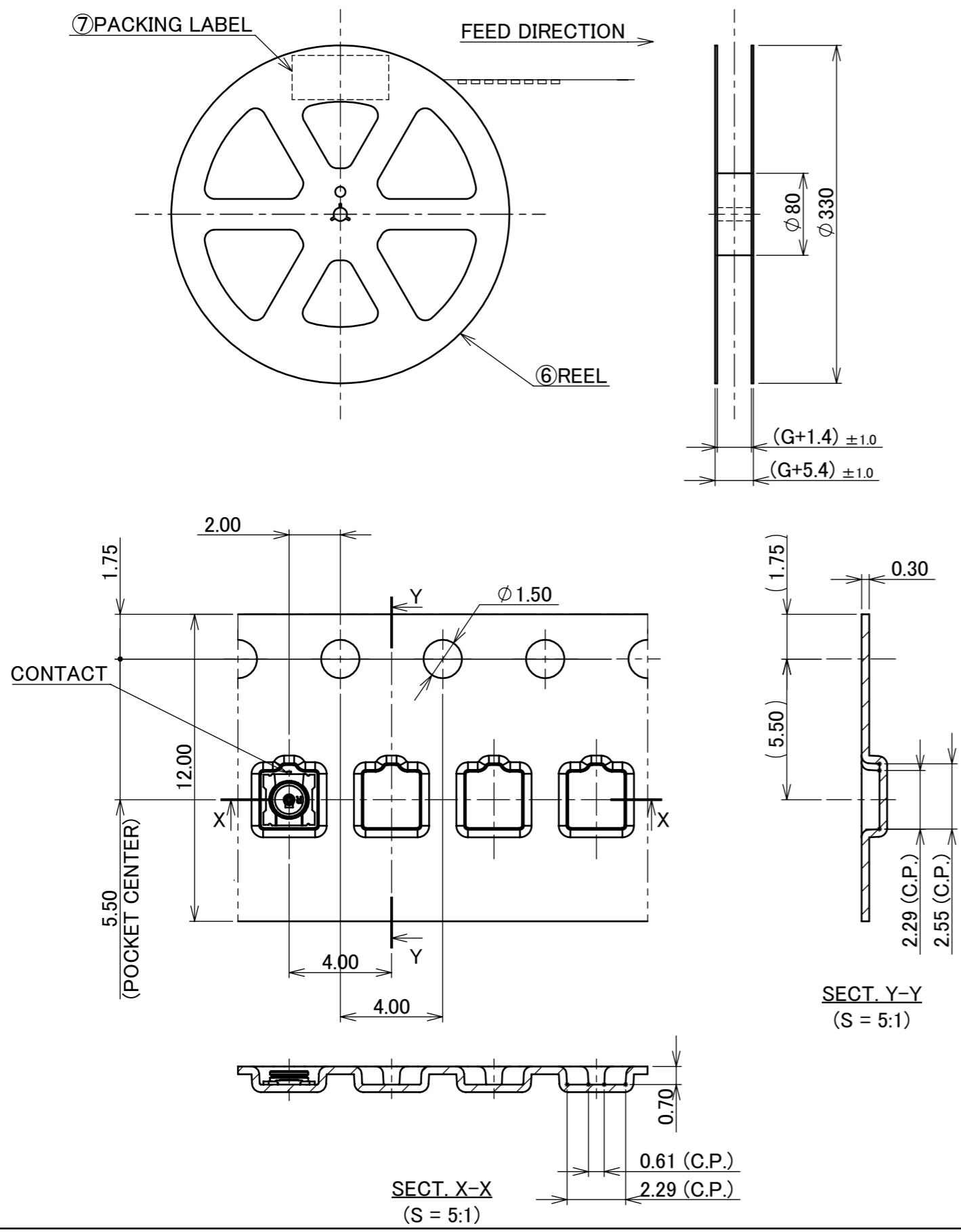
ANGLE	$\pm 2^\circ$	6 OVER 30 MAX.	$\pm 0.3$	PROJECTION 	SERIES No. R3	CUSTOMER COPY		
6 MAX.	$\pm 0.2$	30 OVER 120 MAX.	$\pm 0.5$					
GENERAL TOLERANCE.				TITLE MHF <sup>®</sup> 7 RECEPTACLE	SCALE -	<b>I-PEX</b>		
DWG.	DATE							
CHK.								
APP.								
				DWG. No.	20921	SIZE A3	SHEET 2/5	REV. 5



NOTES.  
 4. NO GROUND, SIGNAL, AND RESIST IN THIS AREA.

ANGLE	±2°	6 OVER 30 MAX.	±0.3	PROJECTION 	SERIES No. R3	CUSTOMER COPY			
6 MAX.	±0.2	30 OVER 120 MAX.	±0.5						
GENERAL TOLERANCE.				TITLE		SCALE	<b>I-PEX</b>		
DWG.	DATE			MHF <sup>®</sup> 7 RECEPTACLE		20:1			
CHK.						UNIT			
APP.						mm			
				DWG. No.	20921	SIZE	SHEET	REV.	
						A3	3/5	5	

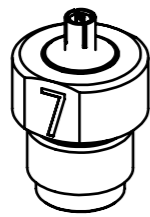
PART NO.	A	QTY. PER EMBOSS REEL (PIECES / REEL)	QTY. PER PACKING CARTON (REELS / CARTON)
20921-001E	12	10,000 / REEL	9 / CARTON = 90,000 PIECES



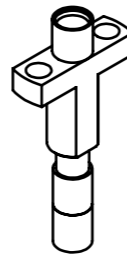
- NOTES.
- TAPING SPECIFICATION FOLLOWS JIS C 0806 (IEC 60286-3).
  - MAKE EMPTY SECTION OF LEADER AND END ON EACH END OF THE TAPE.
  - TOP TAPE SHALL NOT STICK OUT FROM EMBOSS TAPE.
  - TOP TAPE SHALL NOT COVER FEED HOLE.

7	PACKING LABEL	-	-
6	REEL	PS	ANTI-STATIC TYPE
5	TOP TAPE	PET t=0.062	ANTI-STATIC TYPE
4	EMBOSS TAPE	PS t=0.3	-
NO.	DESCRIPTION	MATERIAL	FINISH, REMARKS

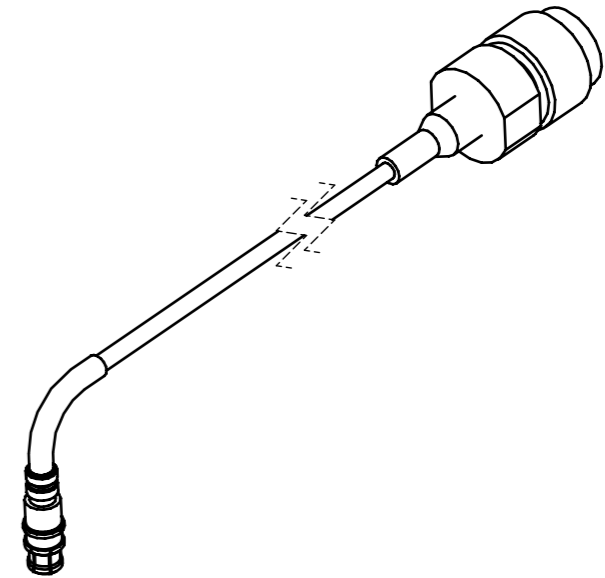
ANGLE	±2°	6 OVER 30 MAX.	±0.3	PROJECTION ⊕	SERIES No. R3	CUSTOMER COPY		
6 MAX.	±0.2	30 OVER 120 MAX.	±0.5					
GENERAL TOLERANCE.				TITLE MHF® 7 RECEPTACLE	SCALE X:1	UNIT <b>I-PEX</b>		
DWG.	DATE							
CHK.								
APP.								
DWG. No. 20921				SIZE A3	SHEET 4/5	REV. 5		



MHF 7 RECEPTACLE INSPECTION ADAPTER  
PART NO. 91107-0001



MHF 7 RECEPTACLE HIGH CYCLE N30 SMPM ADAPTER  
PART NO. 91145-0001



MHF SERIES N30 SMPM TO 240MM ADAPTER CABLE  
PART NO. 91137-J300

\* 91145-0001 AND 91137-J300 SHOULD BE USED TOGETHER.

ANGLE	±2°	6 OVER 30 MAX.	±0.3	PROJECTION 	SERIES No. R3	CUSTOMER COPY		
6 MAX.	±0.2	30 OVER 120 MAX.	±0.5					
GENERAL TOLERANCE.				TITLE MHF® 7 RECEPTACLE	SCALE 2:1	UNIT <b>I-PEX</b>		
DWG.	DATE							
CHK.								
APP.								
				DWG. No.	20921	SIZE A3	SHEET 5/5	REV. 5