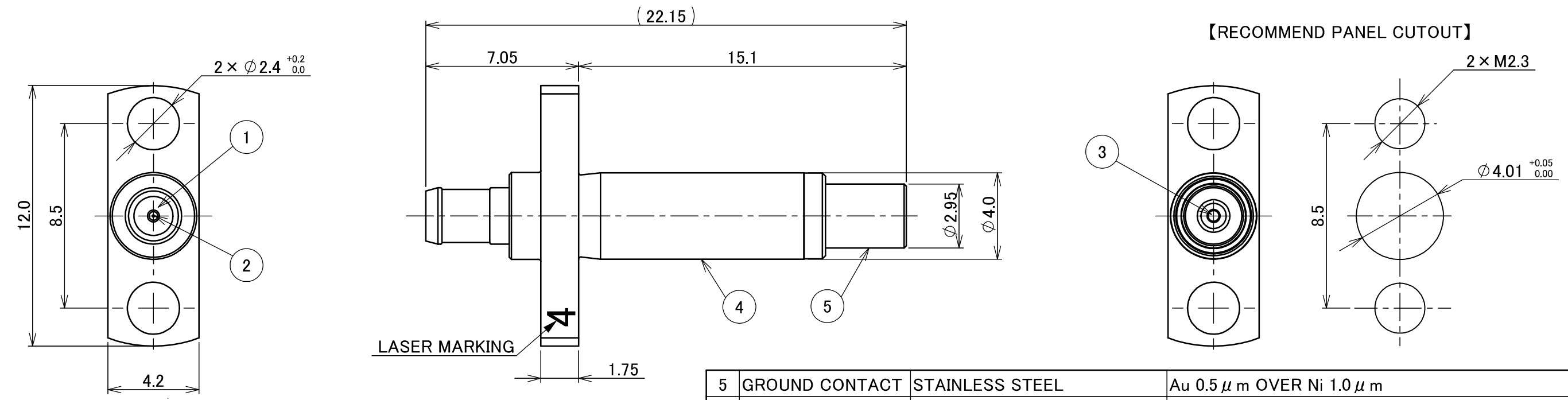
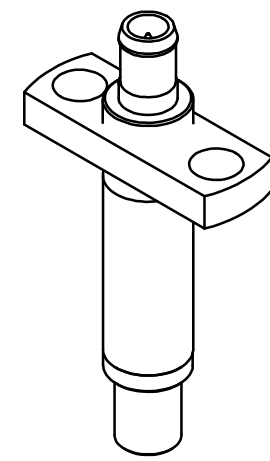
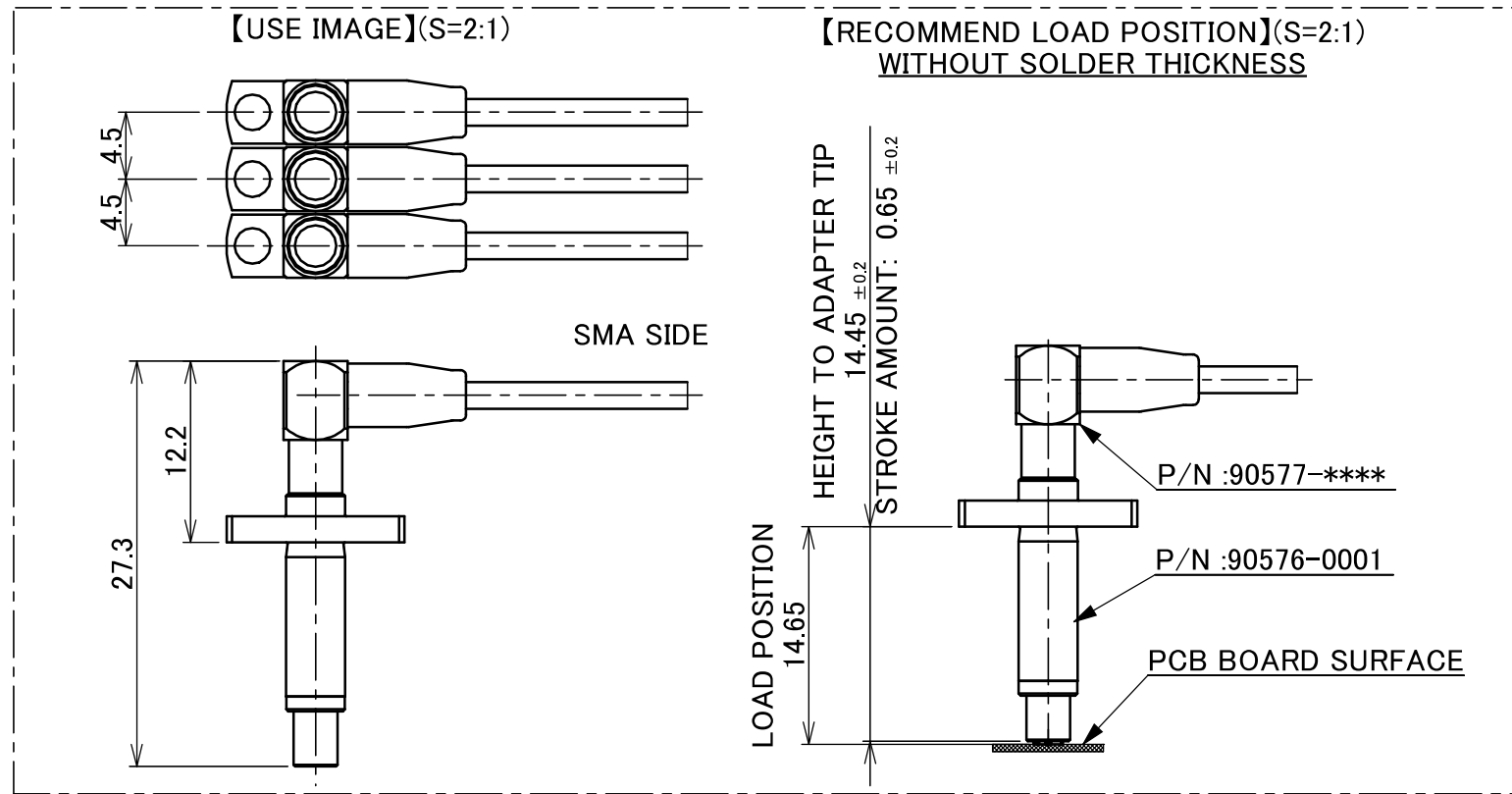


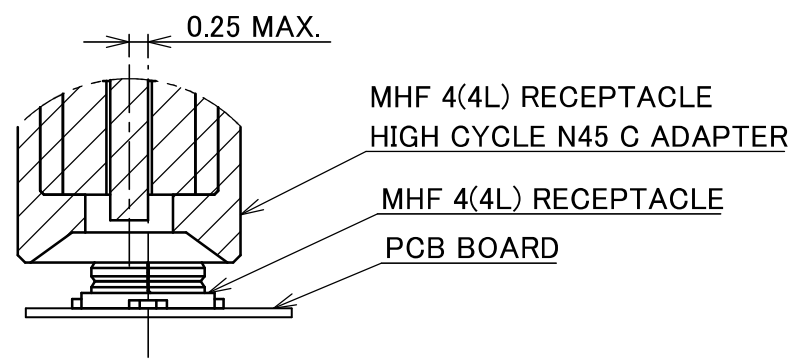
Recommended P/N

90576-0001

PART No.
90576-0001



NOTES.
1. AXIAL MISALIGNMENT DISTANCES :0.25mm MAX.



NO.	DESCRIPTION	MATERIAL	FINISH	REMARKS		
5	GROUND CONTACT	STAINLESS STEEL	Au 0.5 μ m OVER Ni 1.0 μ m			
4	SHELL	BRASS	Ni 1.0 μ m			
3	CONTACT PROBE	BRASS	Au 1.0 μ m MIN. OVER Ni 1.0 μ m MIN.			
2	PIN CONTACT	BERYLIUM COPPER	Au 1.0 μ m MIN. OVER Ni 1.0 μ m MIN.			
1	INSLATOR	PTFE				
9	Z230387	K.W	2023/04/03	Y.H	ANGLE ±2° 6 OVER 30 MAX. ±0.3	PROJECTION SERIES No. R0 TITLE MHF® 4(4L) RECEPTACLE HIGH CYCLE N45 C ADAPTER SCALE 5:1 UNIT mm SHEET A3 REV. 9
8	Z220687	Y.I	2022/06/17	Y.H	6 MAX. ±0.2 30 OVER 120 MAX. ±0.5	
7	Z190618	K.I	2019/05/08	Y.H	GENERAL TOLERANCE.	
6	Z190238	K.M	2019/02/22	Y.H	DWG. DATE K.Nisiyama 2012/03/19	
5	Z131027	S.H	2013/11/11	Tom	CHK. -	
4	Z13376	K.N	2013/05/01	E.K	APP. -	
REV.	ECN	BY	DATE	APP.	APP. E.Kawabe	DWG. No. 90576

ITEMS		SPECIFICATION
APPLICABLE CONNECTOR PART No.		MHF 4 RECEPTACLE P/N:20449-001E MHF 4L RECEPTACLE P/N:20579-001E-*** MHF SERIES N45 C TO SMA ADAPTER CABLE P/N:90577-0***
RATING FREQUENCY		DC~12 GHz
OPERATING TEMPERATURE		243~343 K (-30°C~+70°C)
OPERATING HUMIDITY		85% MAX.(NON-CONDENSING)
VSWR	MATED WITH 90449-001 AND 90577-0***	1.30 MAX. AT 0.1~3GHz, 1.50 MAX. AT 3~6GHz 1.60 MAX. AT 6~9GHz, 2.30 MAX. AT 9~12GHz
	MATED WITH 90449-001 AND 90577-J***	1.50 MAX. AT 0.1~3GHz, 1.80 MAX. AT 3~6GHz 2.10 MAX. AT 6~9GHz, 2.80 MAX. AT 9~12GHz
INSULATION RESISTANCE		500 Mohm MIN. at DC100V
DIELECTRIC WITHSTANDING VOLTAGE		AC300V
DURABILITY		RECEPTACLE: 10.000CYCLE MHF SERIES N45 C TO SMA ADPTER CABLE: 100CYCLE
PRODUCT SPECIFICATION		PRS-2002
TEST REPORT		TR-14094
INSTRUCTION MANUAL		HIM-14020
APPEARANCE CRITERIA No.		QLS-A***

ANGLE	±2°	6 OVER 30 MAX.	±0.3	PROJECTION 	SERIES No. R0	CUSTOMER COPY		
	6 MAX.	±0.2	30 OVER 120 MAX.					
GENERAL TOLERANCE.				TITLE MHF® 4(4L) RECEPTACLE HIGH CYCLE N45 C ADAPTER	SCALE	I-PEX		
DWG.	DATE				-			
CHK.					UNIT			
APP.					mm			
				DWG. No.	90576	SIZE	SHEET	REV.
						A3	2/2	9