

Recommended P/N 20579-001E

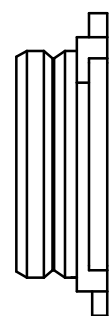
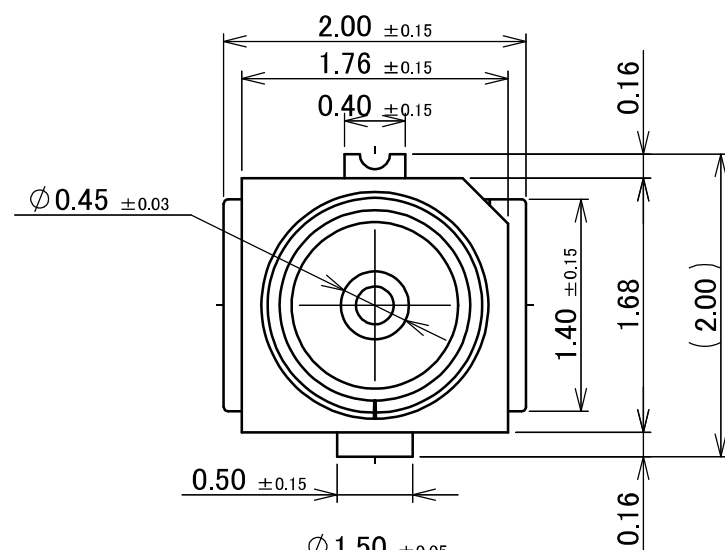
PART NO.	PACKING QUANTITY / REEL
20579-001E	10,000 PCS.
20579-001E-01	20,000 PCS.



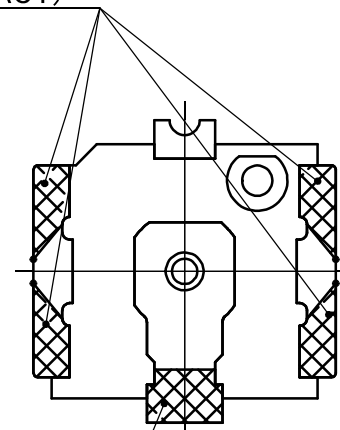
Halogen Free



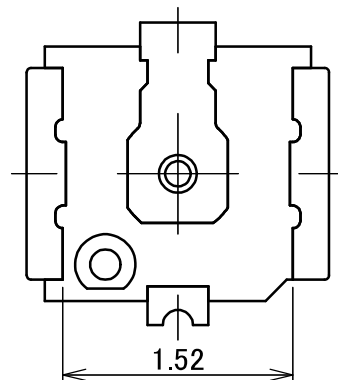
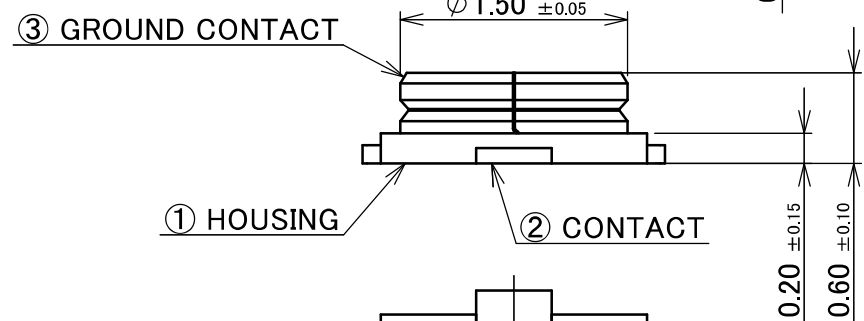
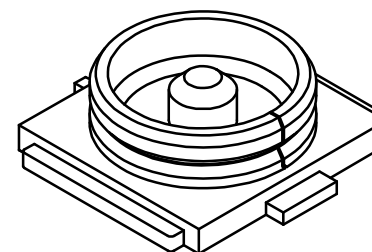
RoHS Compliant



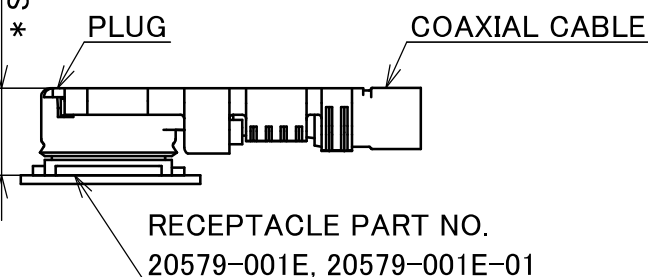
SMT Au PLATING AREA (GROUND CONTACT)



SMT Au PLATING AREA (CONTACT)



MATING HEIGHT
* SEE BELOW



* MATING HEIGHT

- 1.2 MAX. WITH 20611-001R, 20572-001R-08, 20448-00*R-081, 20448-001R-081E
- 1.4 MAX. WITH 20565-001R-**
- 1.7 MAX. WITH 20632-001R-37
- (2.0 MAX. WITH MHF 4L LK LOCKED CONDITION)

MATING CONDITION
WITH MHF 4/MHF 4L PLUG
(S = 10/1)

NOTES.

- APPLICABLE CONNECTOR (CABLE SIZE)
 - MHF 4 PLUG: 20611-001R (Φ0.81), 20448-00*R-081 (Φ0.81), 20448-001R-081E (Φ0.81)
 - MHF 4L PLUG: 20572-001R-08 (Φ0.64, Φ0.81), 20565-001R-** (Φ0.83, Φ0.95, Φ1.13), 20632-001R-37 (Φ1.37)
- COPLANARITY: 0.1 mm MAX.

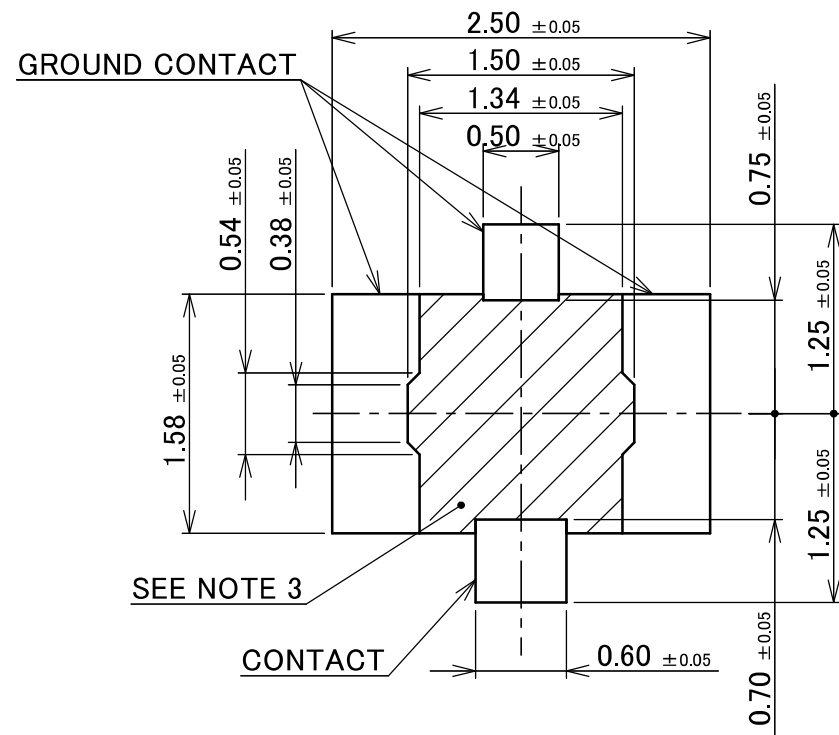
3	GROUND CONTACT	PHOSPHOR BRONZE	ALL OVER Ni 1.00 μm MIN. CONTACT PART: Au 0.05 μm MIN., SOLDERING PART Au AREA: 0.03 μm MIN.
2	CONTACT	BRASS	ALL OVER Ni 1.00 μm MIN. CONTACT PART: Au 0.05 μm MIN. SOLDERING PART Au AREA: 0.03 μm MIN.
1	HOUSING	LCP	UL94V-0, BLACK
NO.	DESCRIPTION	MATERIAL	FINISH, REMARKS

16	Z241865	TOI	2024/12/25	Yufu	ANGLE	±2°	6 OVER 30 MAX.	±0.3	PROJECTION ⊕	SERIES No. R1	CUSTOMER COPY	
15	Z241493	TOI	2024/10/25	Yufu	6 MAX.	±0.2	30 OVER 120 MAX.	±0.5				
14	Z230813	Y.I	2023/07/13	M.T	GENERAL TOLERANCE.			TITLE MHF® 4L RECEPTACLE	SCALE	I-PEX		
13	Z230518	K.M	2023/05/10	Y.H	DWG.	K.Hashiba	DATE		2014/09/22		20:1	
12	Z230201	TOI	2023/02/20	Y.H	CHK.	T.Tagawa					UNIT	
11	Z220592	K.W	2022/05/30	Y.H	APP.	T.Takano					mm	
REV.	ECN	BY	DATE	APP.	REVISION RECORD			DWG. No.	20579	SIZE	SHEET	REV.
										A3	1/7	16

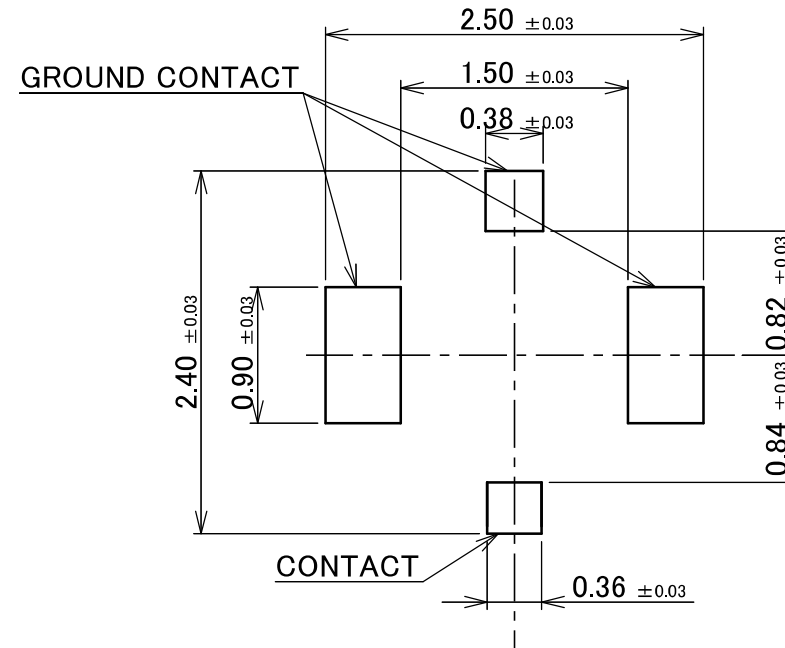
FOR MHF 4L PLUG

ITEMS	SPECIFICATION		
	20572-001R-08 (CABLE Φ0.81 TYPE)	20565-001R-13 (CABLE Φ1.13 TYPE)	20632-001R-37 (CABLE Φ1.37 TYPE)
APPLICABLE CONNECTOR PART No.			
RATING VOLTAGE	60 V AC (R.M.S)/DC		
RATING FREQUENCY	DC ~ 12GHz		
OPERATING TEMPERATURE	233~363 K(-40°C~+90°C)		
VSWR (MATED WITH SMA ADAPTER PART No. 90449-002)	1.30 MAX. AT 0.1~3GHz, 1.40 MAX. AT 3~6GHz, 1.50 MAX. 6~9GHz. 1.65 MAX. AT 9~12GHz		
MAIN CONTACT RESISTANCE	INITIAL : 20 mohm MAX. / AFTER TEST : ΔR 20 mohm MAX.		
GROUND CONTACT RESISTANCE	INITIAL : 20 mohm MAX. / AFTER TEST : ΔR 20 mohm MAX.		
INSULATION RESISTANCE	INITIAL : 500 Mohm MIN. / AFTER TEST : 100 Mohm MIN.		
DIELECTRIC WITHSTANDING VOLTAGE	200 V AC 1 MINUTE		
DURABILITY	30 CYCLES		
MATING FORCE (INITIAL / AFTER TEST)	INITIAL : 30 N MAX. / AFTER TEST : 30 N MAX.		
UNMATING FORCE (INITIAL / AFTER TEST)	INITIAL : 20 N MAX. 5 N MIN. / AFTER TEST : 20 N MAX. 3 N MIN.		
PRODUCT SPECIFICATION	PRS-1907		PRS-2925
TEST REPORT	TR-14097		TR-24070
PACKING STANDARD	20579-001E: PST-14004 20579-001E-01: PST-14067		
INSTRUCTION MANUAL	HIM-12011	HIM-12012	HIM-16011
APPEARANCE CRITERIA No.	QLS-A***		

ANGLE	±2°	6 OVER 30 MAX.	±0.3	PROJECTION 	SERIES No. R1	CUSTOMER COPY		
6 MAX.	±0.2	30 OVER 120 MAX.	±0.5					
GENERAL TOLERANCE.				TITLE MHF® 4L RECEPTACLE	SCALE -	I-PEX		
DWG.	DATE							
CHK.								
APP.								
				DWG. No.	20579	SIZE	SHEET	REV.
						A3	2/7	16

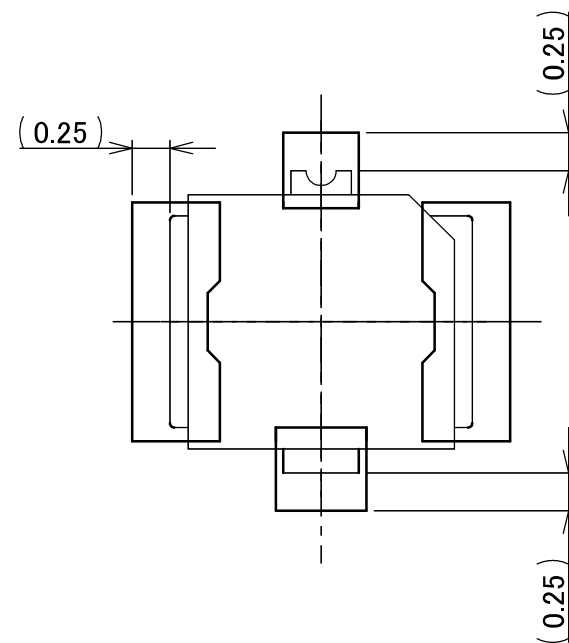


RECOMMENDED FOOTPRINT PATTERN

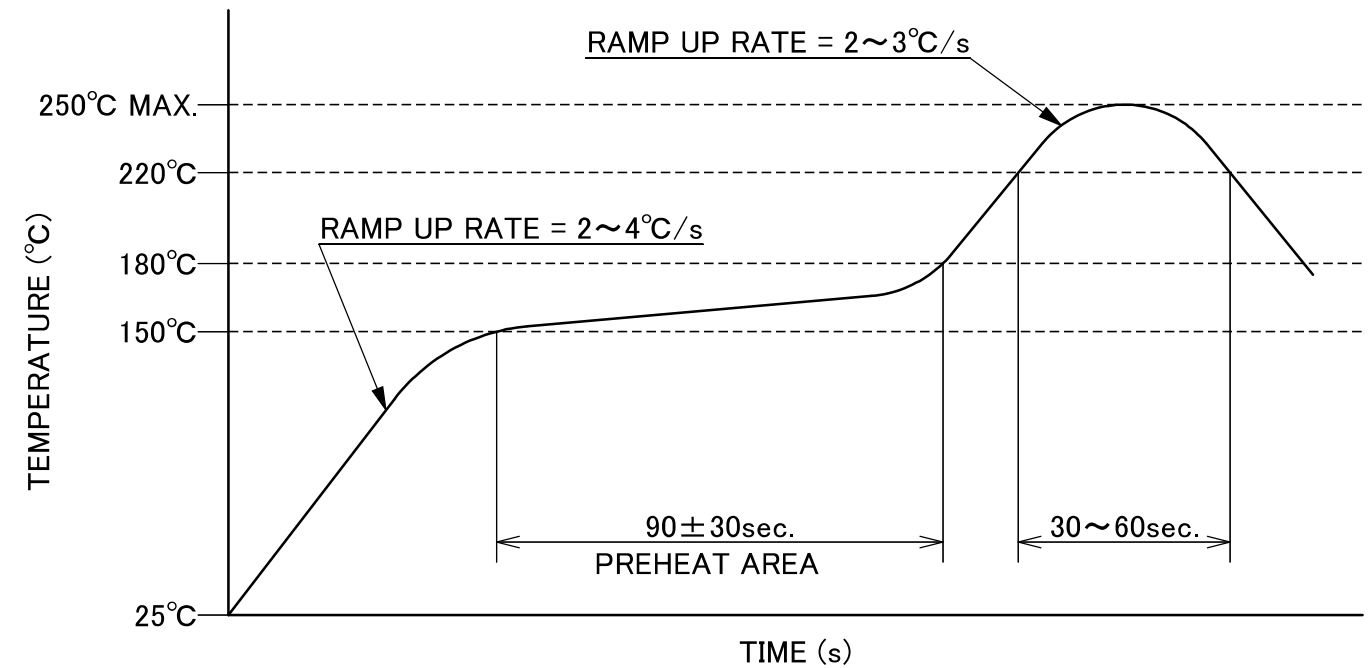


MASK THICKNESS: 0.12 mm

RECOMMENDED METAL MASK LAYOUT



CONNECTOR ON RECOMMENDED FOOTPRINT PATTERN



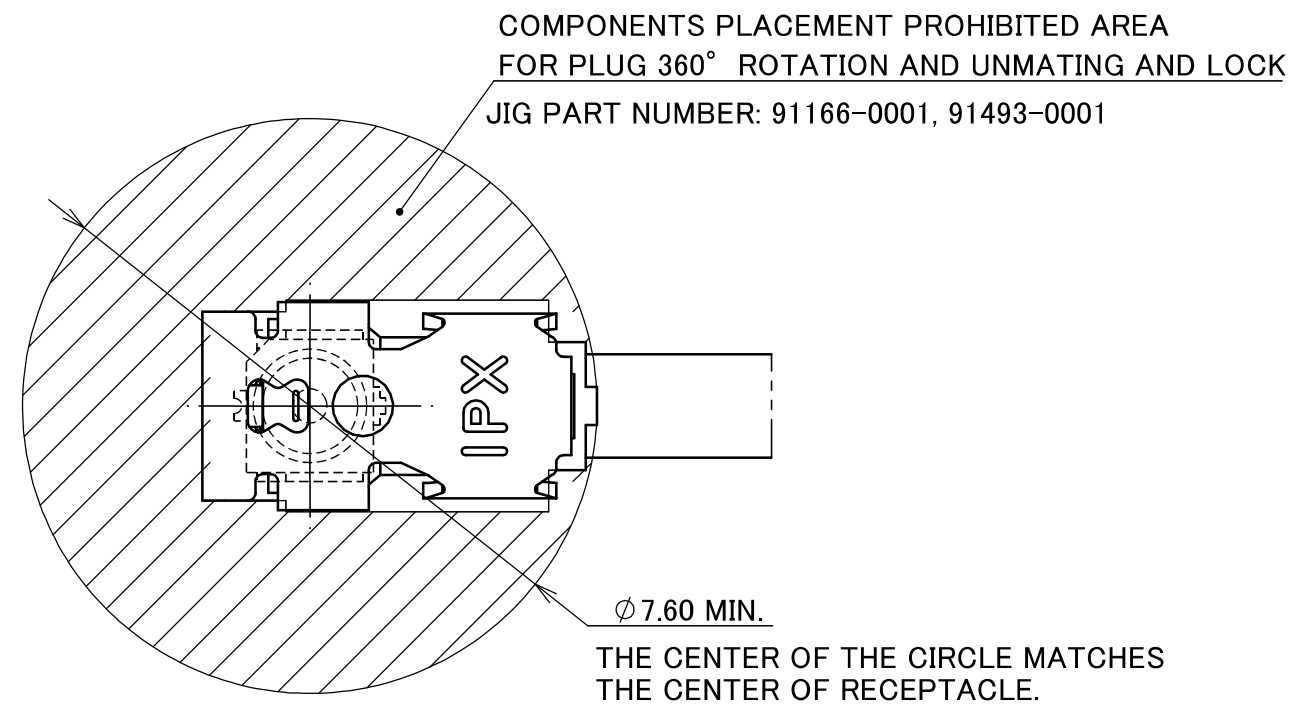
REFLOW TEMPERATURE PROFILE
SENJU METAL INDUSTRY CO., LTD. : M705-SHF(Sn96.5 Ag3.0 Cu0.5)

NOTE 3. NO GROUND, SIGNAL, AND RESIST IN THIS AREA.

ANGLE	±2°	6 OVER 30 MAX.	±0.3	PROJECTION ⊕	SERIES No. R1	CUSTOMER COPY			
6 MAX.	±0.2	30 OVER 120 MAX.	±0.5						
GENERAL TOLERANCE.				TITLE		SCALE	I-PEX		
DWG.	DATE			MHF® 4L RECEPTACLE		20:1			
CHK.						UNIT			
APP.						mm			
				DWG. No.	20579	SIZE	SHEET	REV.	
						A3	3/7	16	

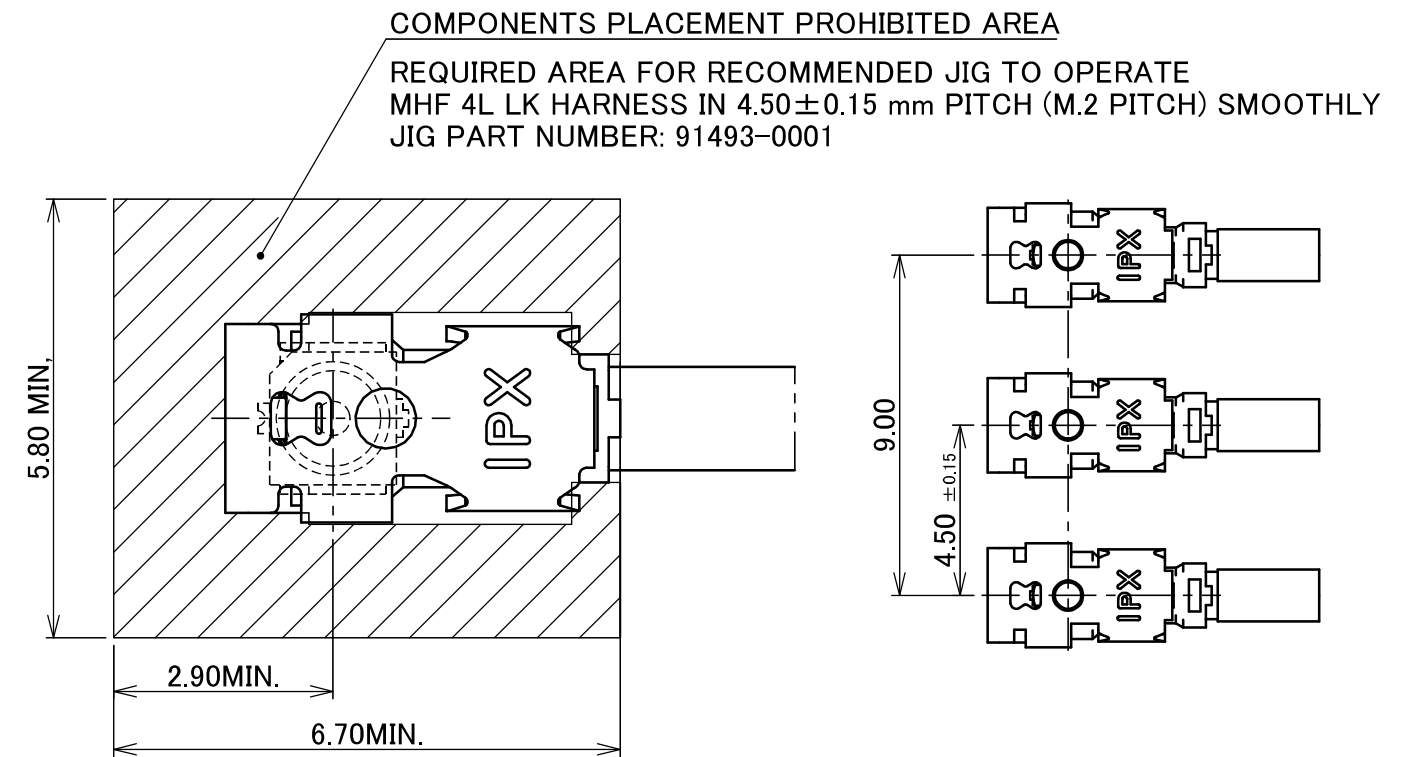
COMPONENT PLACEMENT PROHIBITED AREA FOR MHF 4L RECEPTACLE MATED WITH MHF 4L LK HARNESS REQUIRED AREA FOR RECOMMENDED JIG TO OPERATE

SINGLE CONNECTOR LAYOUT



MATING AND LOCK CONDITION
WITH MHF 4L LK HARNESS

MULTIPLE CONNECTORS LAYOUT

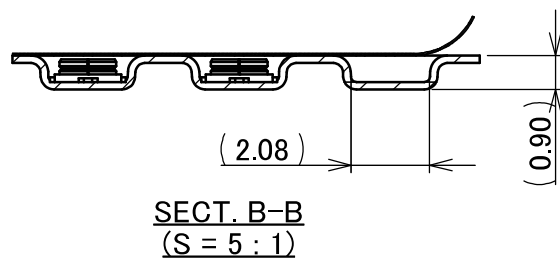
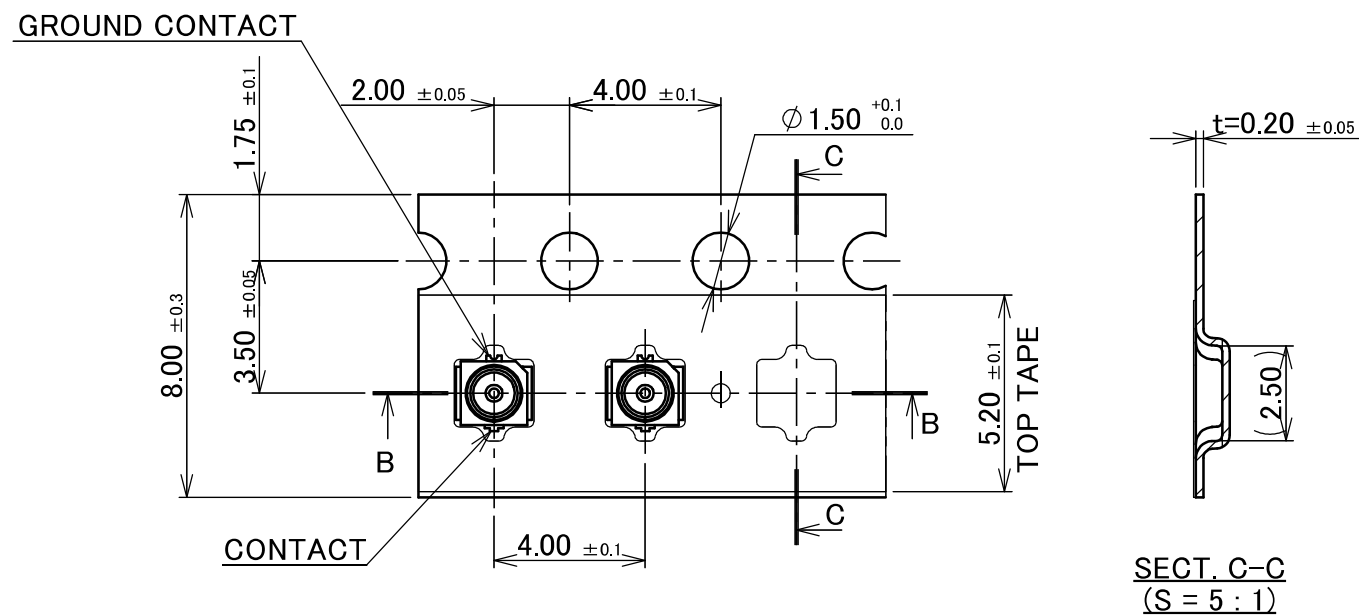
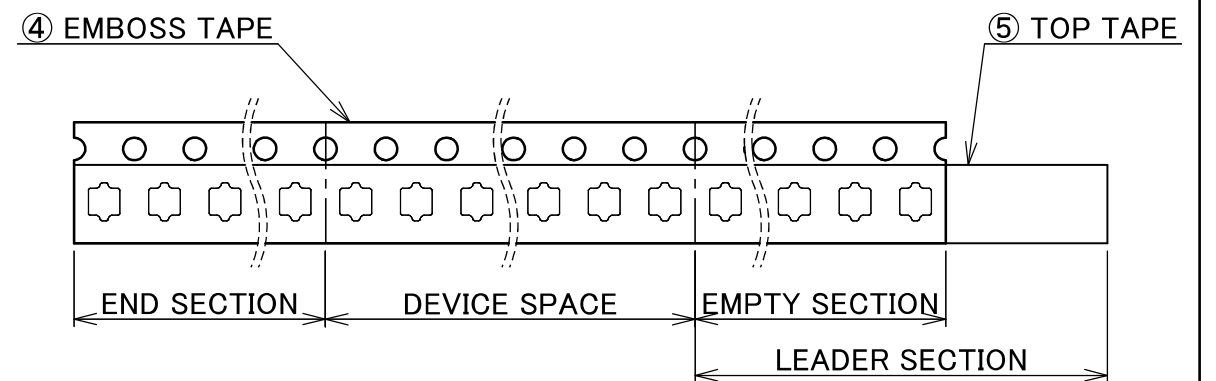
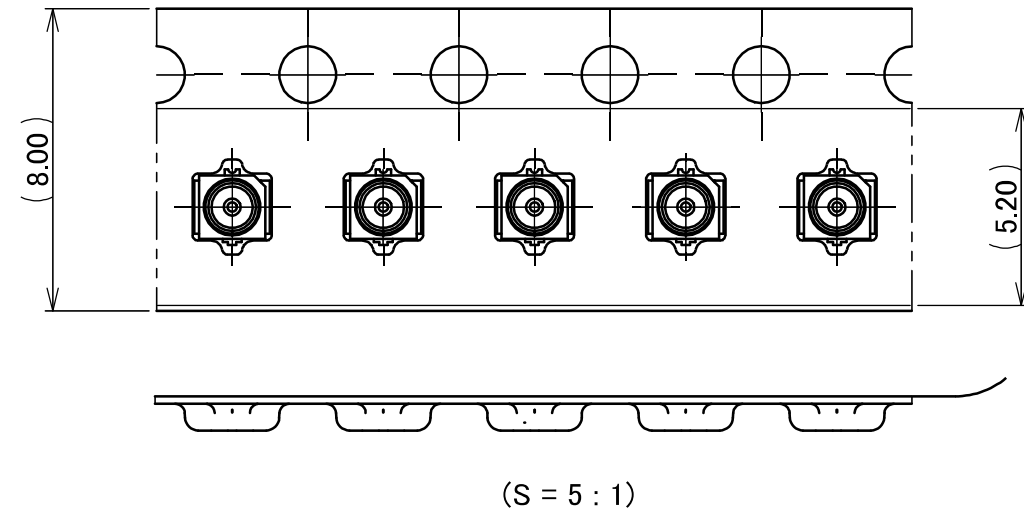
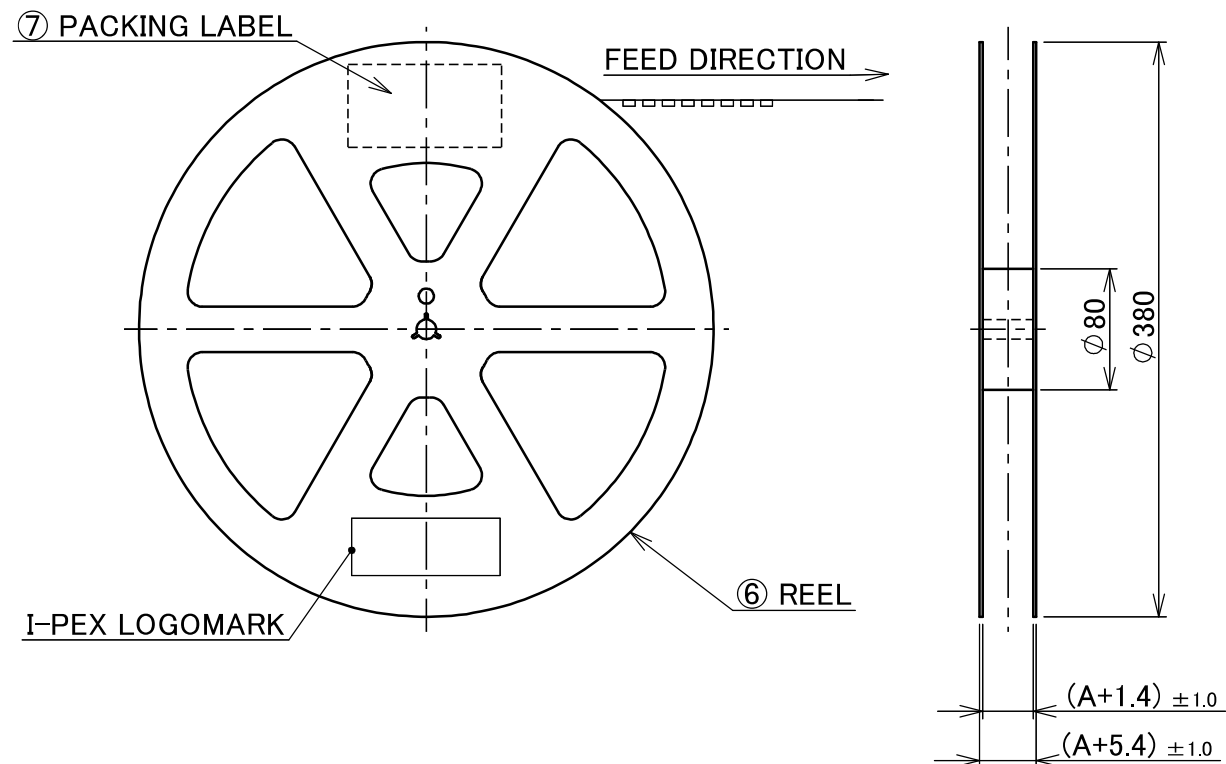


MATING AND LOCK CONDITION
WITH MHF 4L LK HARNESS NARROW PITCH

MHF 4L LK HARNESS UNLOCK CONDITION
NARROW PITCH DIMENSIONS
(S = 5 : 1)

ANGLE	±2°	6 OVER 30 MAX.	±0.3	PROJECTION ⊕	SERIES No. R1	CUSTOMER COPY			
6 MAX.	±0.2	30 OVER 120 MAX.	±0.5						
GENERAL TOLERANCE.				TITLE MHF® 4L RECEPTACLE	DWG. No. 20579	SCALE	I-PEX		
DWG.	DATE					10:1			
CHK.						UNIT			
APP.						mm			
						SIZE	SHEET	REV.	
						A3	4/7	16	

PART NO.	A	QTY. PER EMBOSS REEL (PIECES / REEL)	QTY. PER PACKING CARTON (REELS / CARTON)
20579-001E	8	10,000 / REEL	9 REELS/ CARTON = 90,000 PIECES

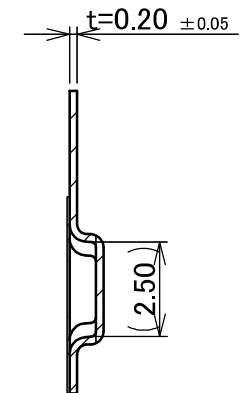
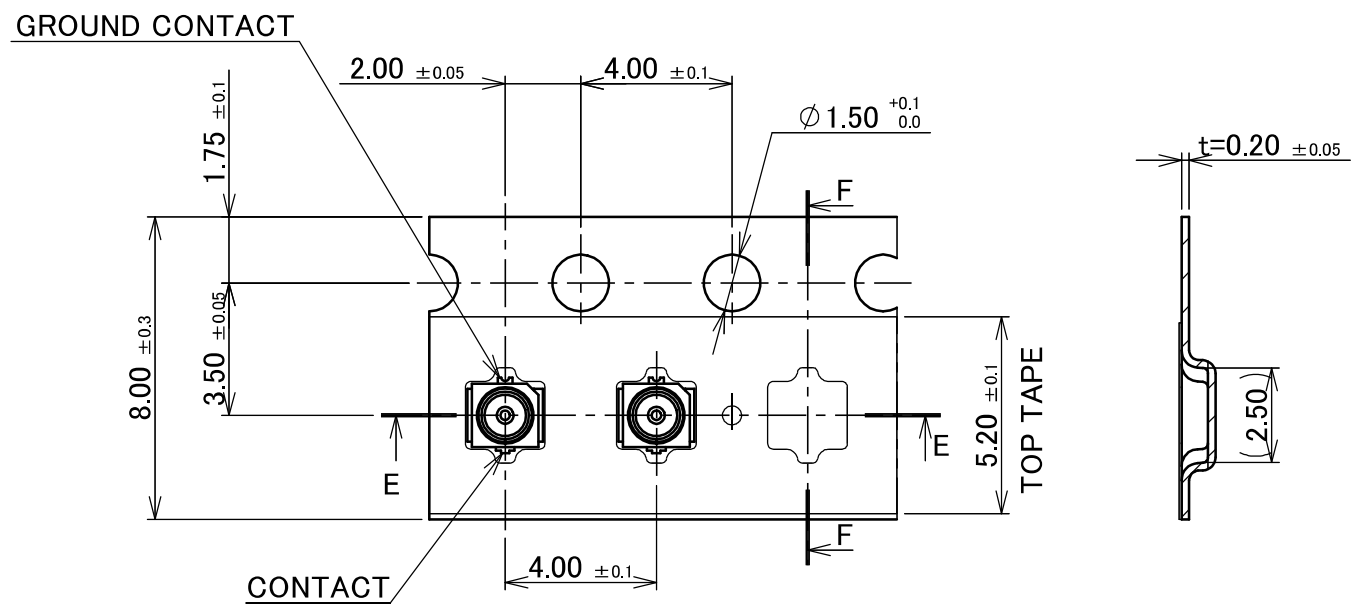
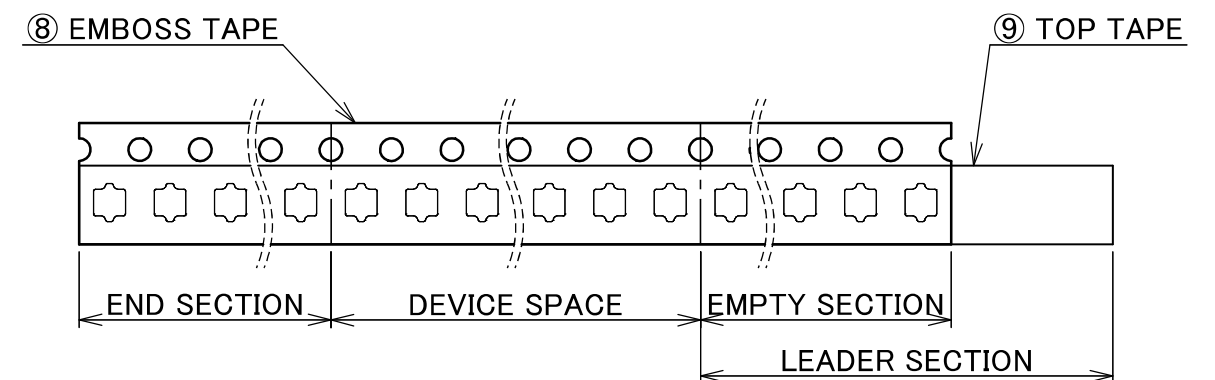
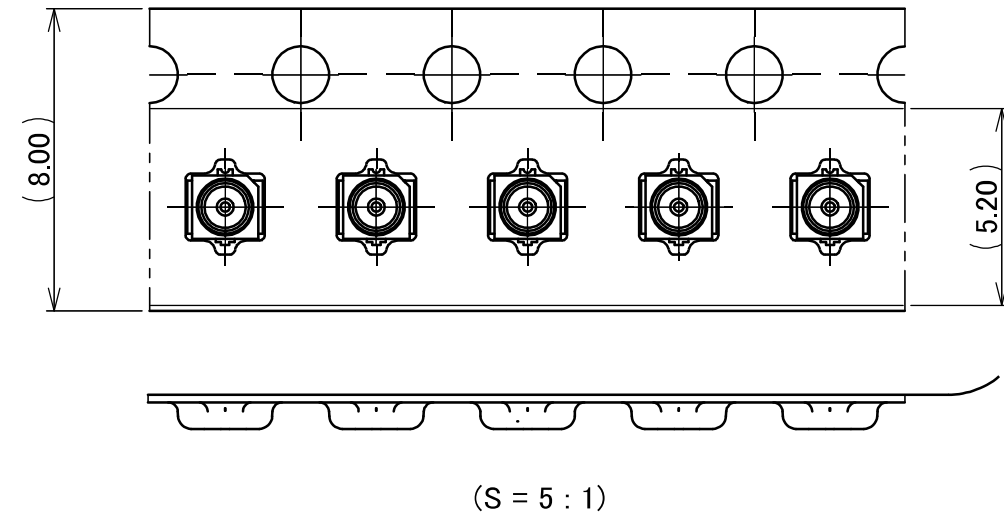
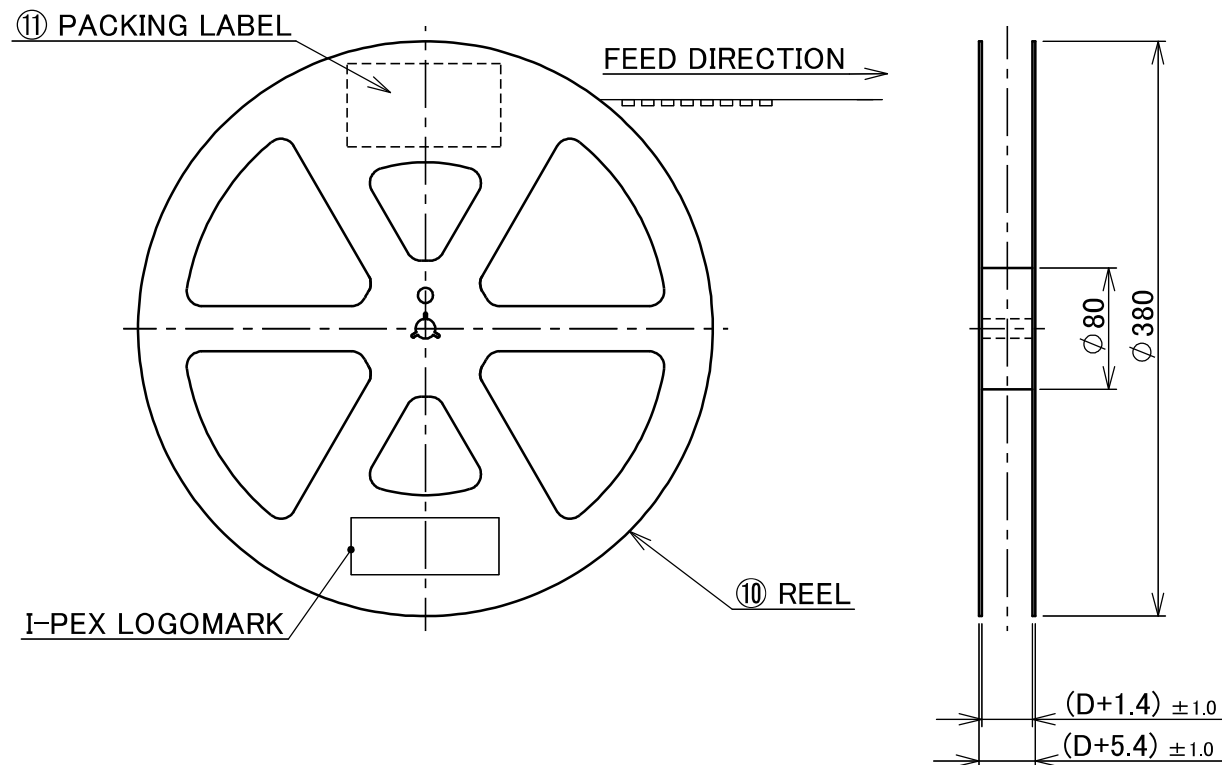


- NOTES.
- TAPING SPECIFICATION FOLLOWS JIS C 0806 (IEC 60286-3).
 - MAKE EMPTY SECTION OF LEADER AND END ON EACH END OF THE TAPE.
 - TOP TAPE SHALL NOT STICK OUT FROM EMBOSS TAPE.
 - TOP TAPE SHALL NOT COVER FEED HOLE.

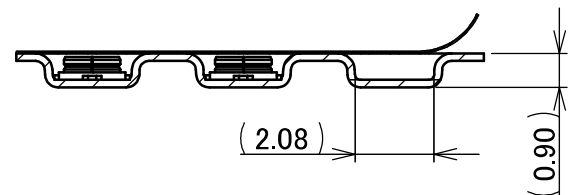
NO.	DESCRIPTION	MATERIAL	FINISH, REMARKS
7	PACKING LABEL	-	-
6	REEL	PS	ANTI-STATIC TYPE
5	TOP TAPE	PET	ANTI-STATIC TYPE HEAT ACTIVATED
4	EMBOSS TAPE	PS t=0.2	ANTI-STATIC TYPE OR CONDUCTIVE

ANGLE	±2°	6 OVER 30 MAX.	±0.3	PROJECTION ⊕	SERIES No. R1	CUSTOMER COPY		
6 MAX.	±0.2	30 OVER 120 MAX.	±0.5					
GENERAL TOLERANCE.				TITLE MHF® 4L RECEPTACLE	SCALE 1:X	I-PEX		
DWG.	DATE							
CHK.								
APP.								
DWG. No.				20579	SIZE	SHEET	REV.	
					A3	5/7	16	

PART NO.	D	QTY. PER EMBOSS REEL (PIECES / REEL)	QTY. PER PACKING CARTON (REELS / CARTON)
20579-001E-01	8	20,000 / REEL	10 REELS/ CARTON = 200,000 PIECES



SECT. F-F
(S = 5 : 1)



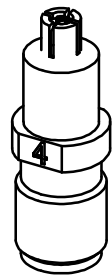
SECT. E-E
(S = 5 : 1)

NOTES.

- TAPING SPECIFICATION FOLLOWS JIS C 0806 (IEC 60286-3).
- MAKE EMPTY SECTION OF LEADER AND END ON EACH END OF THE TAPE.
- TOP TAPE SHALL NOT STICK OUT FROM EMBOSS TAPE.
- TOP TAPE SHALL NOT COVER FEED HOLE.

NO.	DESCRIPTION	MATERIAL	FINISH, REMARKS
11	PACKING LABEL	-	-
10	REEL	PS	ANTI-STATIC TYPE
9	TOP TAPE	PET	ANTI-STATIC TYPE HEAT ACTIVATED
8	EMBOSS TAPE	PS t=0.2	ANTI-STATIC TYPE OR CONDUCTIVE

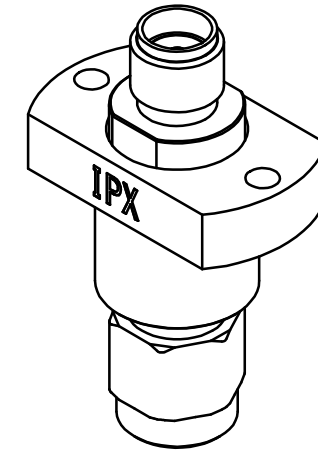
ANGLE	±2°	6 OVER 30 MAX.	±0.3	PROJECTION	SERIES No.	CUSTOMER COPY		
6 MAX.	±0.2	30 OVER 120 MAX.	±0.5		R1			
GENERAL TOLERANCE.				TITLE	SCALE		1:X	
DWG.	DATE			MHF® 4L RECEPTACLE	UNIT		mm	
CHK.				DWG. No.	20579	SIZE	SHEET	REV.
APP.						A3	6/7	16



MHF 4 (4L) SMA ADAPTER
PART NO. 90449-002

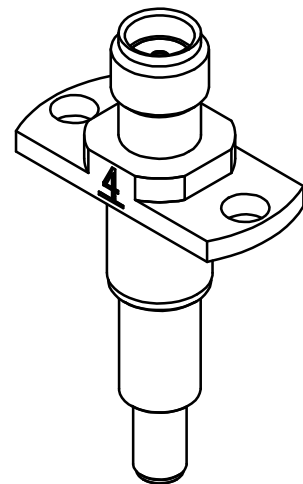


MHF 4 RECEPTACLE HIGH CYCLE ATTACHMENT
PART NO. 90683-0001

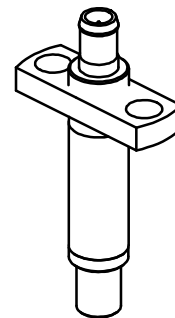


MHF SERIES HIGH CYCLE SMA ADAPTER BASE UNIT
PART NO. 90684-0001

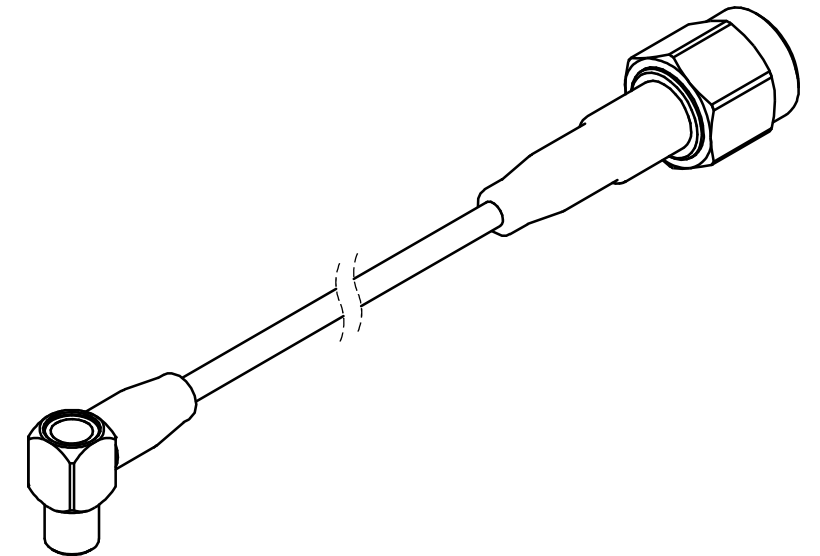
* 90683-0001 AND 90684-0001 SHOULD BE USED TOGETHER.



MHF 4 (4L) RECEPTACLE HIGH CYCLE SMA ADAPTER
PART NO. 90698-0001



MHF 4 (4L) RECEPTACLE HIGH CYCLE N45 C ADAPTER
PART NO. 90576-0001



MHF SERIES N45 C TO SMA ADAPTER CABLE
PART NO. 90577-****

* 90576-0001 AND 90577-**** SHOULD BE USED TOGETHER.

ANGLE	±2°	6 OVER 30 MAX.	±0.3	PROJECTION ⊕	SERIES No. R1	CUSTOMER COPY			
6 MAX.	±0.2	30 OVER 120 MAX.	±0.5						
GENERAL TOLERANCE.				TITLE		SCALE	I-PEX		
DWG.	DATE			MHF® 4L RECEPTACLE		2:1			
CHK.						UNIT			
APP.				DWG. No. 20579		mm			
						SIZE	SHEET	REV.	
						A3	7/7	16	