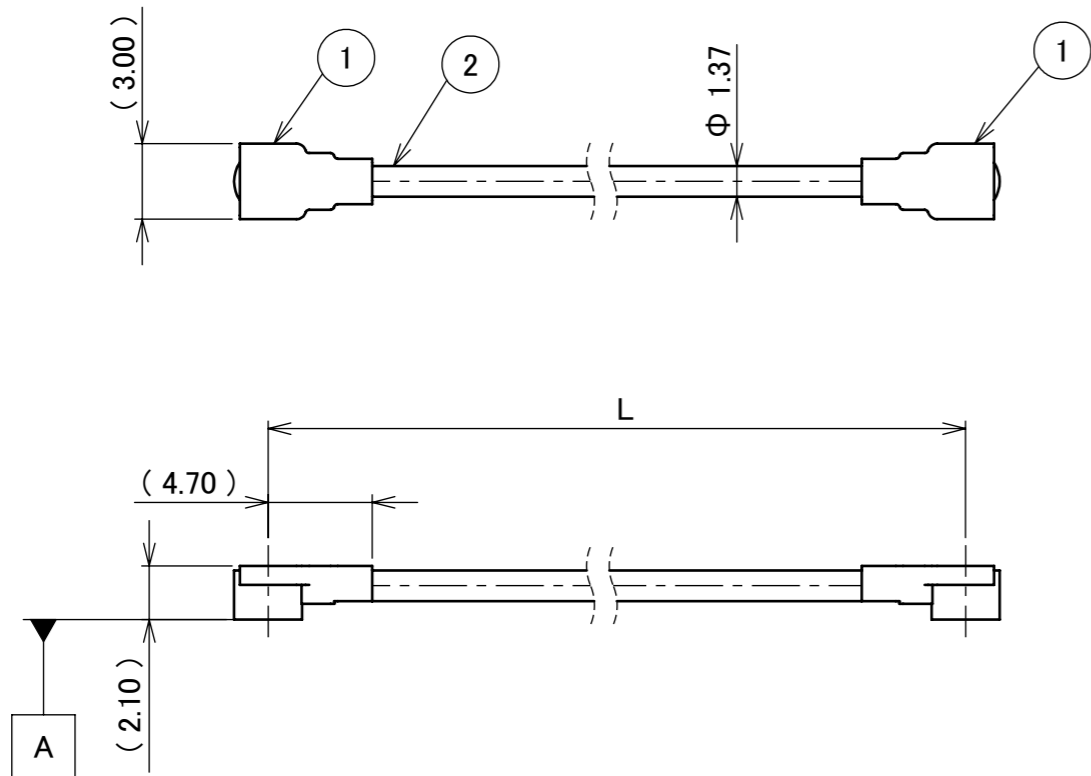
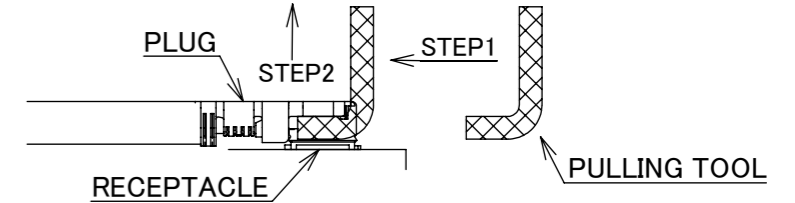


|           |               |
|-----------|---------------|
| PART NO.  | L             |
| 8-24-0142 | 200.00±1.0 mm |

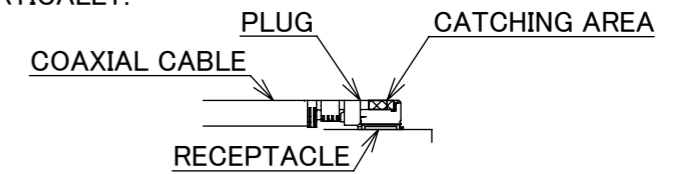
PLEASE CONTACT I-PEX FOR REQUESTS OTHER THAN THIS SPECIFICATIONS.  
PLEASE NOTE IF SPECIFICATIONS CHANGE, PART NO. WILL ALSO CHANGE.



NOTES  
1. SUGGESTIONS FOR MATING & UNMATING OPERATION.  
1-1. MATING  
MATE THE CONNECTOR VERTICALLY,  
ALIGNING THE MATING AXIS ON PLUG AND RECEPTACLE.  
DO NOT SLANT MATE.  
1-2. UNMATING  
1-2-1.  
UNMATING BY PULLING TOOL.  
[P/N 90192-001 (MHF I), ]  
USE THE PULLING TOOL AS THE FOLLOWING, AND  
PULL PLUG TO VERTICAL DIRECTION AS DIRECTLY AS POSSIBLE.

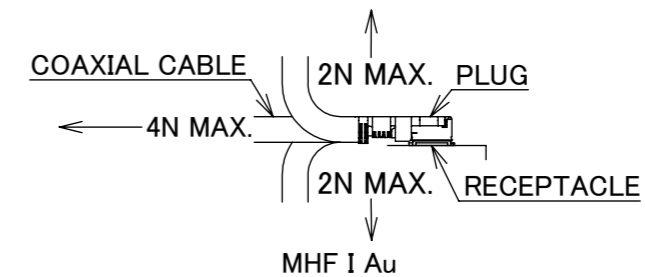


1-2-2.  
UNMATING DIRECTLY BY HAND.  
HOLD THE CATCHING AREA ON PLUG AND PULL THE PLUG  
VERTICALLY.



2. PACKING : PLASTIC BAG

3. PERMISSIBLE LOAD ON THE CABLE AFTER MATING



4. CABLE CRIMP STRENGTH : 15N MIN.  
5. ORIENTATION OF CONNECTORS

|     |                |     |                                       |
|-----|----------------|-----|---------------------------------------|
| 2   | CABLE          | 1   | AWG#30 Φ 1.37, BRAIDED SHIELD , BLACK |
| 1   | CONNECTOR-1, 2 | 2   | MHF I Au                              |
| NO. | DESCRIPTION    | QTY | REMARK                                |

|                    |          |                |                  |                                 |                         |               |
|--------------------|----------|----------------|------------------|---------------------------------|-------------------------|---------------|
| ANGLE              | ±2°      | 6 OVER 30 MAX. | ±0.3             | PROJECTION<br>⊕                 | SERIES No.<br>H-240007C | CUSTOMER COPY |
|                    | 6 MAX.   | ±0.2           | 30 OVER 120 MAX. |                                 |                         |               |
| GENERAL TOLERANCE. |          |                |                  | TITLE<br>MHF®<br>I-I CABLE137-1 | SCALE<br>X:1            | UNIT<br>mm    |
| DWG.               | M.Toida  | DATE           | 2024/03/27       |                                 |                         |               |
| CHK.               | T.Takuno |                |                  | DWG. No.<br>8-24-0142           | SIZE<br>A3              | SHEET<br>1/1  |
| REV.               | ECN      | BY             | DATE             |                                 |                         |               |
| REVISION RECORD    |          |                |                  | K.Yufu                          |                         |               |



Halogen Free



RoHS Compliant

Confidential C

I-PEX Inc.

QKE-DFE06-02 REV.12