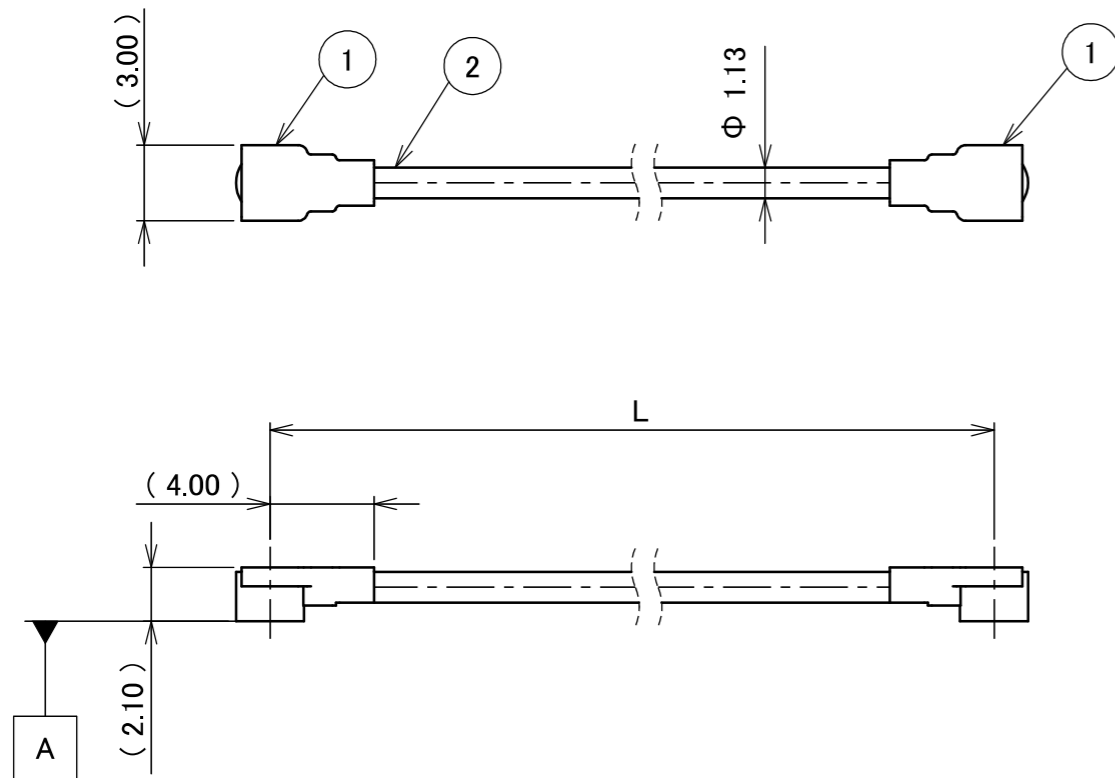


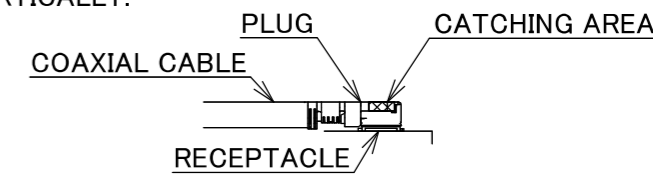
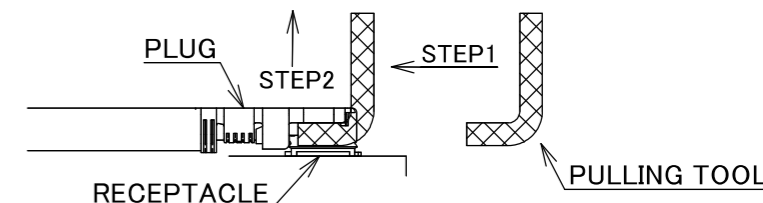
PART NO.	L
8-24-0114	100.00±1.0 mm

PLEASE CONTACT I-PEX FOR REQUESTS OTHER THAN THIS SPECIFICATIONS.  
PLEASE NOTE IF SPECIFICATIONS CHANGE, PART NO. WILL ALSO CHANGE.

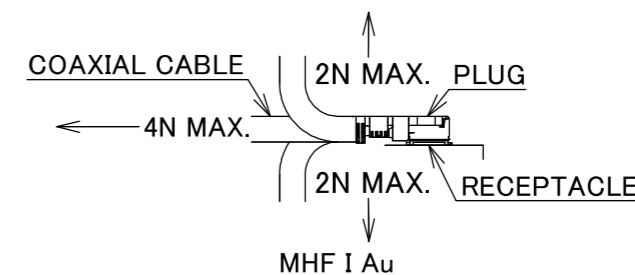


NOTES

1. SUGGESTIONS FOR MATING & UNMATING OPERATION.
  - 1-1. MATING  
MATE THE CONNECTOR VERTICALLY, ALIGNING THE MATING AXIS ON PLUG AND RECEPTACLE. DO NOT SLANT MATE.
  - 1-2. UNMATING
    - 1-2-1.  
UNMATING BY PULLING TOOL.  
[P/N 90192-001 (MHF I), ]  
USE THE PULLING TOOL AS THE FOLLOWING, AND PULL PLUG TO VERTICAL DIRECTION AS DIRECTLY AS POSSIBLE.
    - 1-2-2.  
UNMATING DIRECTLY BY HAND.  
HOLD THE CATCHING AREA ON PLUG AND PULL THE PLUG VERTICALLY.



2. PACKING : PLASTIC BAG
3. PERMISSIBLE LOAD ON THE CABLE AFTER MATING



4. CABLE CRIMP STRENGTH : 10N MIN.
5. ORIENTATION OF CONNECTORS

2	CABLE	1	AWG#32 Φ 1.13, BRAIDED SHIELD , BLACK
1	CONNECTOR-1, 2	2	MHF I Au
NO.	DESCRIPTION	QTY	REMARK

					ANGLE	±2°	6 OVER 30 MAX.	±0.3	PROJECTION ⊕	SERIES No. H-240006B	CUSTOMER COPY						
						6 MAX.	±0.2	30 OVER 120 MAX.						±0.5			
					GENERAL TOLERANCE.					TITLE MHF® I-I CABLE113-1	SCALE	I-PEX					
					DWG.	M.Toida					DATE			2024/03/22	X:1		
					CHK.	T.Takuno					UNIT			mm			
0	Z240329	TOI	2024/03/22		APP.	K.Yufu				DWG. No.	8-24-0114	SIZE	A3	SHEET	1/1	REV.	0
REVISION RECORD																	



Halogen Free



RoHS Compliant