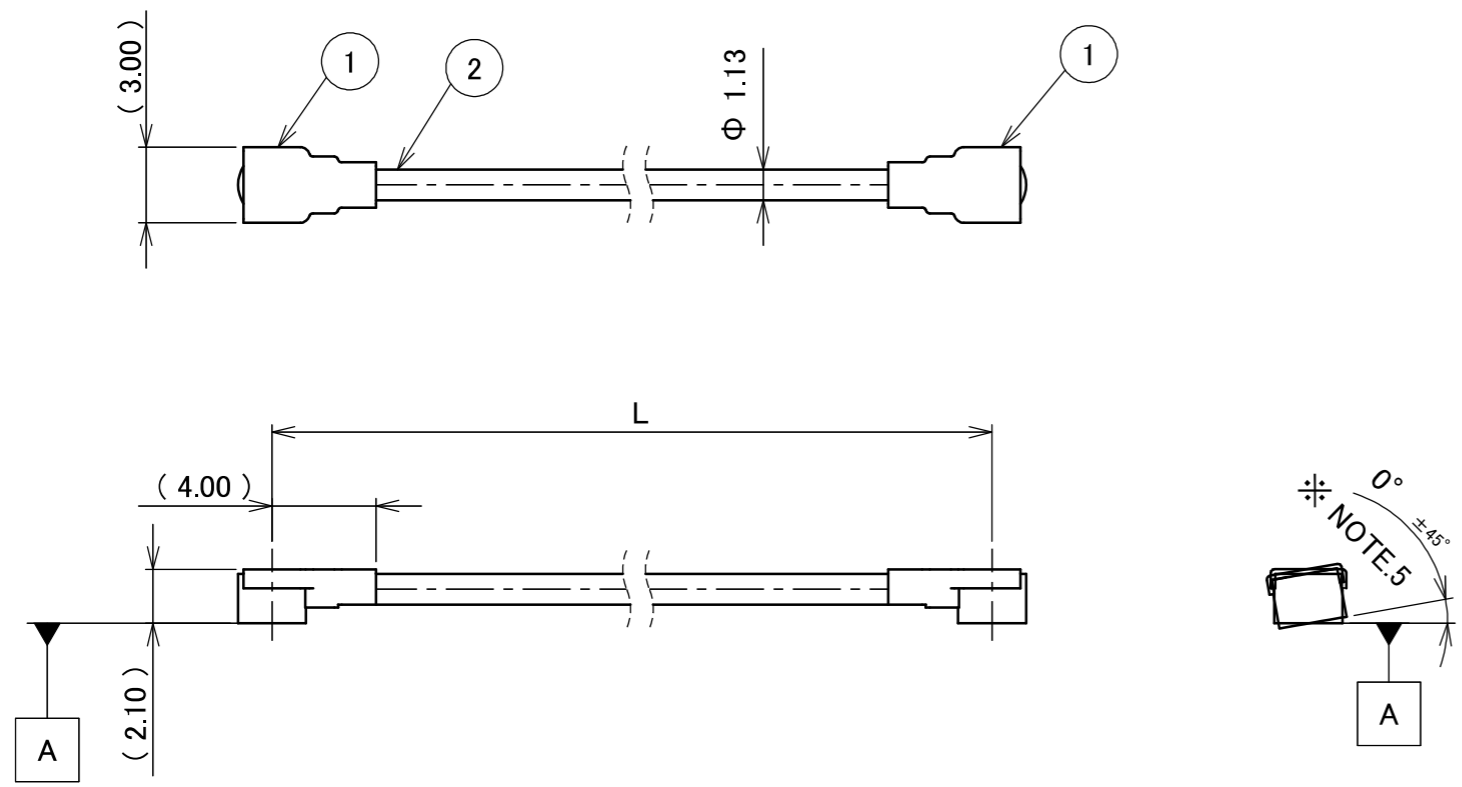
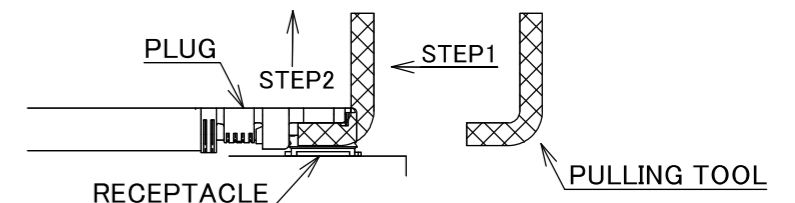


PART NO.	L
8-24-0113	50.00±1.0 mm

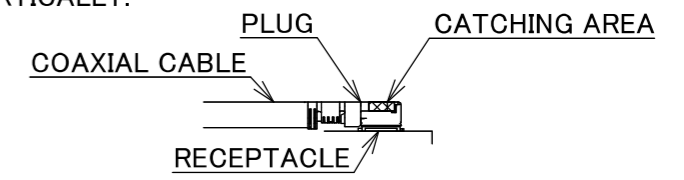
PLEASE CONTACT I-PEX FOR REQUESTS OTHER THAN THIS SPECIFICATIONS.
PLEASE NOTE IF SPECIFICATIONS CHANGE, PART NO. WILL ALSO CHANGE.



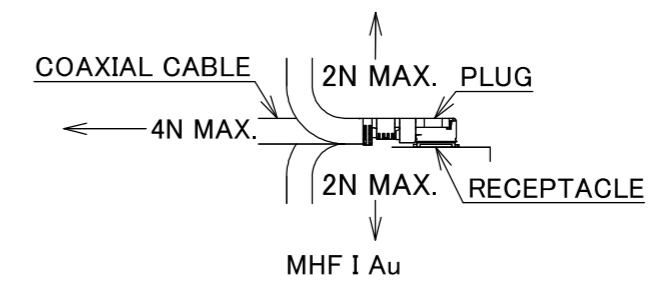
NOTES
1. SUGGESTIONS FOR MATING & UNMATING OPERATION.
1-1. MATING
MATE THE CONNECTOR VERTICALLY, ALIGNING THE MATING AXIS ON PLUG AND RECEPTACLE. DO NOT SLANT MATE.
1-2. UNMATING
1-2-1.
UNMATING BY PULLING TOOL.
[P/N 90192-001 (MHF I),]
USE THE PULLING TOOL AS THE FOLLOWING, AND PULL PLUG TO VERTICAL DIRECTION AS DIRECTLY AS POSSIBLE.



1-2-2.
UNMATING DIRECTLY BY HAND.
HOLD THE CATCHING AREA ON PLUG AND PULL THE PLUG VERTICALLY.



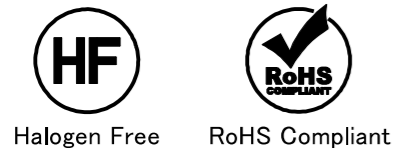
2. PACKING : PLASTIC BAG
3. PERMISSIBLE LOAD ON THE CABLE AFTER MATING



4. CABLE CRIMP STRENGTH : 10N MIN.
5. ORIENTATION OF CONNECTORS

2	CABLE	1	AWG#32 Φ 1.13, BRAIDED SHIELD , BLACK
1	CONNECTOR-1, 2	2	MHF I Au
NO.	DESCRIPTION	QTY	REMARK

					ANGLE	±2°	6 OVER 30 MAX.	±0.3	PROJECTION ⊕	SERIES No. H-240006A	CUSTOMER COPY				
						6 MAX.	±0.2	30 OVER 120 MAX.						±0.5	
					GENERAL TOLERANCE.					TITLE MHF® I-I CABLE113-1	SCALE	I-PEX			
					DWG.	M.Toida		DATE	2024/03/22		X:1				
					CHK.	T.Takuno					UNIT				
0	Z240329	TOI	2024/03/22		APP.	K.Yufu		DWG. No.			8-24-0113	mm	SIZE	SHEET	REV.
REVISION RECORD													A3	1/1	0



Confidential C

I-PEX Inc.

QKE-DFE06-02 REV.12