

PART NO.
8-21-0048

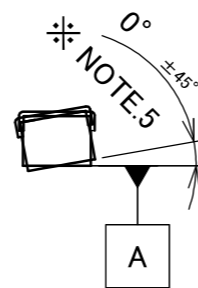
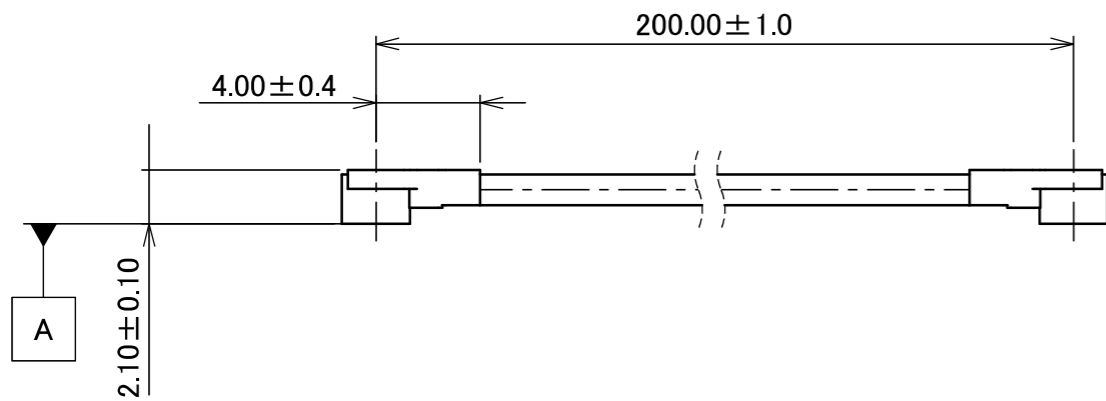
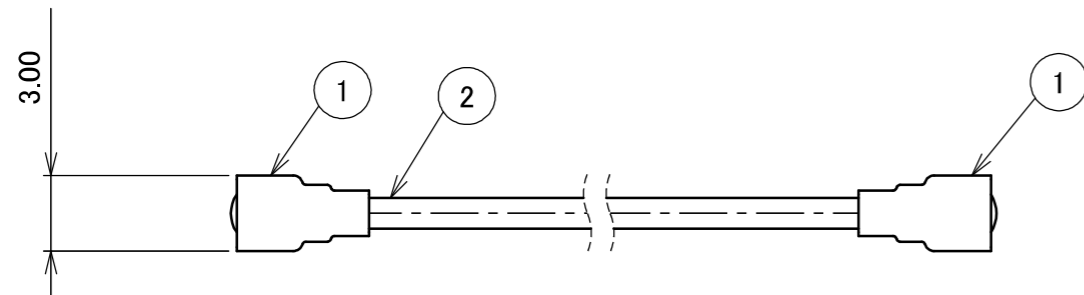


Halogen Free



RoHS Compliant

PLEASE CONTACT I-PEX FOR REQUESTS OTHER THAN THIS SPECIFICATIONS.
PLEASE NOTE IF SPECIFICATIONS CHANGE, PART NO. WILL ALSO CHANGE.



NOTES

1. SUGGESTIONS FOR MATING & UNMATING OPERATION.

1-1. MATING

MATE THE CONNECTOR VERTICALLY,
ALIGNING THE MATING AXIS ON PLUG AND RECEPTACLE.
DO NOT SLANT MATE.

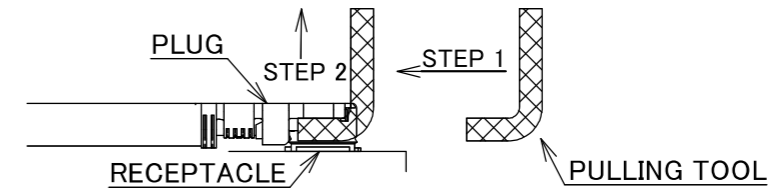
1-2. UNMATING

1-2-1.

UNMATING BY PULLING TOOL.

[P/N 90192-001 (MHF I),]

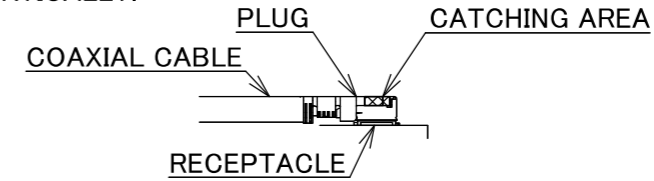
USE THE PULLING TOOL AS THE FOLLOWING, AND
PULL PLUG TO VERTICAL DIRECTION AS DIRECTLY AS POSSIBLE.



1-2-2.

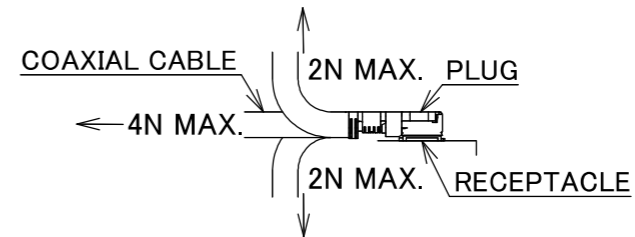
UNMATING DIRECTLY BY HAND.

HOLD THE CATCHING AREA ON PLUG AND PULL THE PLUG
VERTICALLY.



2. PACKING : PLASTIC BAG

3. PERMISSIBLE LOAD ON THE CABLE AFTER MATING



4. CABLE CRIMP STRENGTH : 10N MIN.

5. ORIENTATION OF CONNECTORS : 0° ± 45°

2	CABLE	1	AWG#32 Φ 1.13, BRAIDED SHIELD, BLACK
1	CONNECTOR-1, 2	2	MHF I Au
NO.	DESCRIPTION	QTY	REMARK

CONSTRUCTIONS

ANGLE	±2°	6 OVER 30 MAX.	±0.3	PROJECTION	SERIES No.	CUSTOMER COPY
		6 MAX.	±0.2	30 OVER 120 MAX.	±0.5	
GENERAL TOLERANCE.				TITLE	I-PEX	
DWG.	M.Toida	DATE	2024/08/06	MHF®	I-I CABLE113-1	
CHK.	-			SCALE	X/1	
0	Z241045	TOI	2024/08/06	UNIT	mm	
REV.	ECN	BY	DATE	APP.	SIZE	SHEET
REVISION RECORD				K.Yufu	DWG. No.	8-21-0048
					A3	1/1
						REV. 0