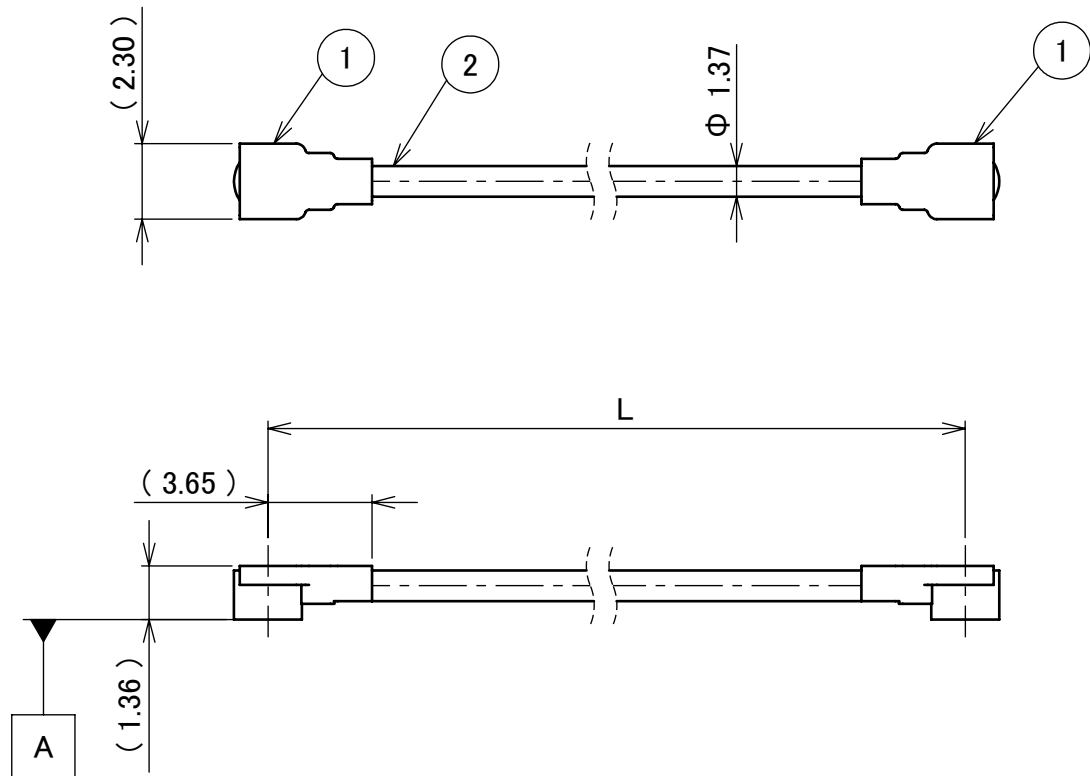


PART NO.	L
8-24-0129	500.00±5.0 mm

PLEASE CONTACT I-PEX FOR REQUESTS OTHER THAN THIS SPECIFICATIONS.
PLEASE NOTE IF SPECIFICATIONS CHANGE, PART NO. WILL ALSO CHANGE.



NOTES

1. SUGGESTIONS FOR MATING & UNMATING OPERATION.

1-1. MATING

MATE THE CONNECTOR VERTICALLY,
ALIGNING THE MATING AXIS ON PLUG AND RECEPTACLE.
DO NOT SLANT MATE.

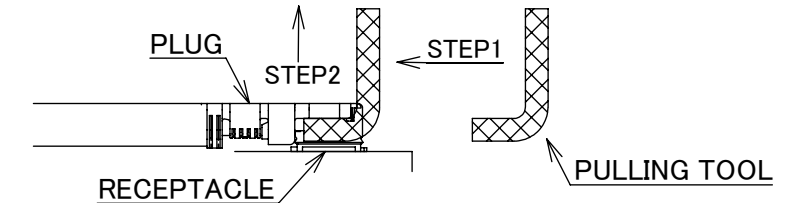
1-2. UNMATING

1-2-1.

UNMATING BY PULLING TOOL.

[P/N 90873-0001 (MHF 4L),]

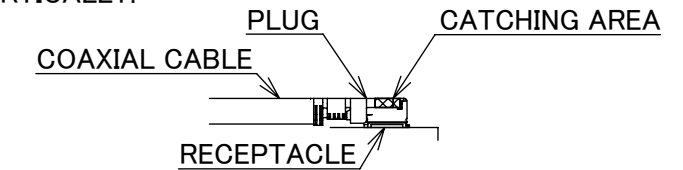
USE THE PULLING TOOL AS THE FOLLOWING, AND
PULL PLUG TO VERTICAL DIRECTION AS DIRECTLY AS POSSIBLE.



1-2-2.

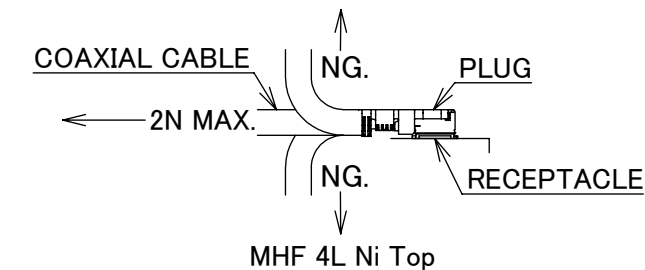
UNMATING DIRECTLY BY HAND.

HOLD THE CATCHING AREA ON PLUG AND PULL THE PLUG
VERTICALLY.



2. PACKING : PLASTIC BAG

3. PERMISSIBLE LOAD ON THE CABLE AFTER MATING



4. CABLE CRIMP STRENGTH : 15N MIN.

5. ORIENTATION OF CONNECTORS

2	CABLE	1	AWG#30 Φ 1.37, BRAIDED SHIELD , BLACK
1	CONNECTOR-1, 2	2	MHF 4L Ni Top
NO.	DESCRIPTION	QTY	REMARK

ANGLE	±2°	6 OVER 30 MAX.	±0.3	PROJECTION ⊕	SERIES No. H-240009A	CUSTOMER COPY							
	6 MAX.	±0.2	30 OVER 120 MAX.				±0.5						
GENERAL TOLERANCE.				TITLE MHF® 4L-4L CABLE137-1	SCALE X:1	UNIT mm							
DWG.	M.Toida		DATE				2024/03/22						
CHK.	T.Takuno		APP.										
0	Z240349	TOI	2024/03/22	APP.	K.Yufu	DWG. No.	8-24-0129	SIZE	A3	SHEET	1/1	REV.	0
REVISION RECORD													



Halogen Free



RoHS Compliant

Confidential C

I-PEX Inc.

QKE-DFE06-02 REV.12