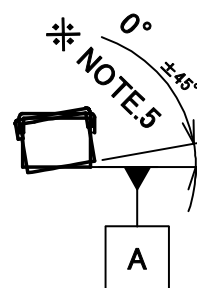
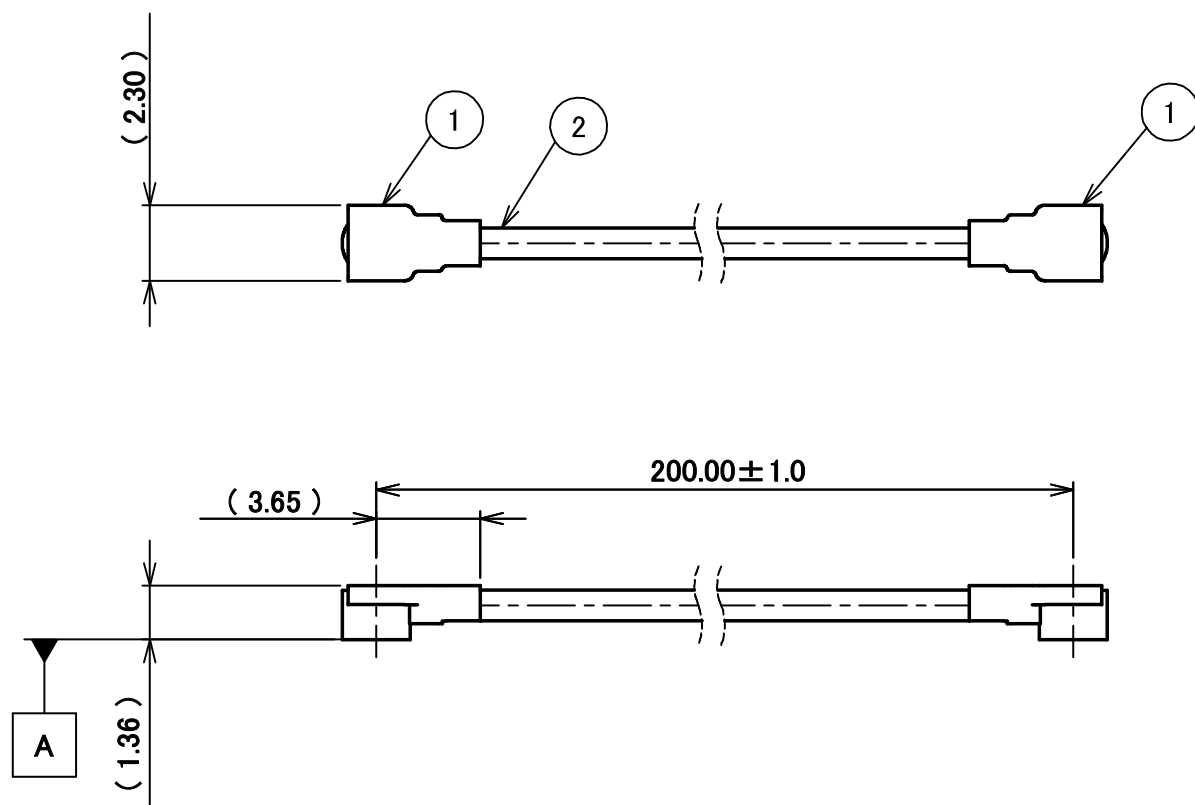


PART NO.

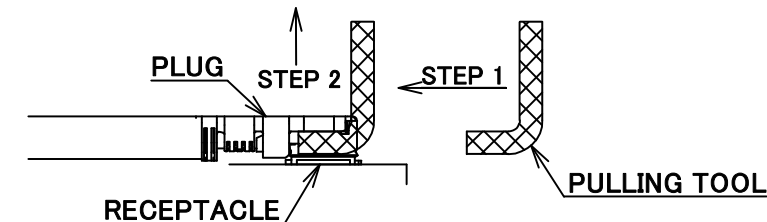
8-23-0114

PLEASE CONTACT I-PEX FOR REQUESTS OTHER THAN THIS SPECIFICATIONS.  
PLEASE NOTE IF SPECIFICATIONS CHANGE, PART NO. WILL ALSO CHANGE.

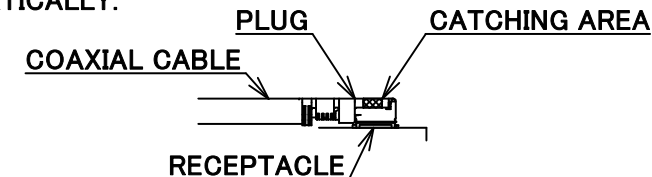


NOTES

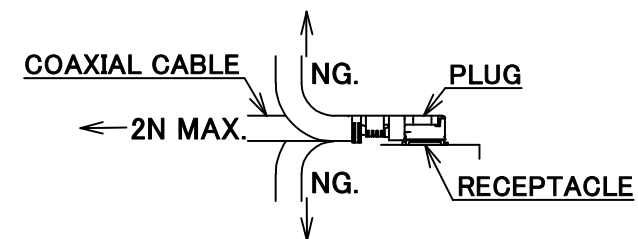
1. SUGGESTIONS FOR MATING & UNMATING OPERATION.
  - 1-1. MATING  
MATE THE CONNECTOR VERTICALLY,  
ALIGNING THE MATING AXIS ON PLUG AND RECEPTACLE.  
DO NOT SLANT MATE.
  - 1-2. UNMATING
    - 1-2-1.  
UNMATING BY PULLING TOOL.  
[P/N 90873-0001 (MHF 4L)]  
USE THE PULLING TOOL AS THE FOLLOWING, AND  
PULL PLUG TO VERTICAL DIRECTION AS DIRECTLY AS POSSIBLE.



- 1-2-2.  
UNMATING DIRECTLY BY HAND.  
HOLD THE CATCHING AREA ON PLUG AND PULL THE PLUG  
VERTICALLY.



2. PACKING : PLASTIC BAG
3. PERMISSIBLE LOAD ON THE CABLE AFTER MATING



4. CABLE CRIMP STRENGTH : 15N MIN.
5. ORIENTATION OF CONNECTORS : 0° ± 45°

2	CABLE	1	AWG#30 Φ 1.37, BRAIDED SHIELD, BLACK
1	CONNECTOR-1, 2	2	MHF 4L Ni Top
NO.	DESCRIPTION	QTY	REMARK

CONSTRUCTIONS

ANGLE	±2°	6 OVER 30 MAX.	±0.3	PROJECTION	SERIES No.	CUSTOMER COPY			
6 MAX.	±0.2	30 OVER 120 MAX.	±0.5		H-230031K				
GENERAL TOLERANCE.				TITLE	MHF® 4L-4L CABLE137-1	SCALE			
DWG.	M.Toida	DATE	2023/09/25			X/1			
CHK.	K.Yufu				UNIT	I-PEX			
0	Z231157	TOI	2023/09/25		mm				
REV.	ECN	BY	DATE	APP.	DWG. No.	SIZE	SHEET	REV.	
REVISION RECORD					Y.Hashimoto	8-23-0114	A3	1/1	0



Halogen Free



RoHS Compliant

Confidential C

I-PEX Inc.

QKE-DFE06-02 REV.12