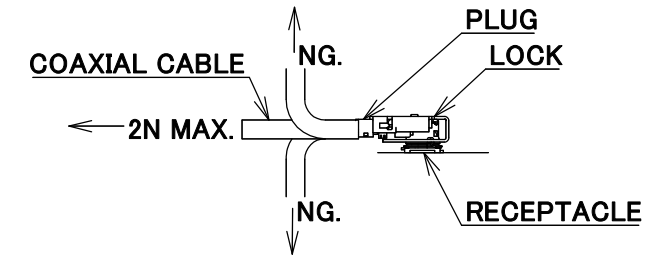


PART NO.
8-21-0044

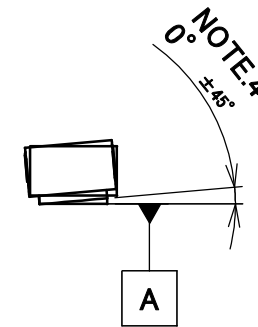
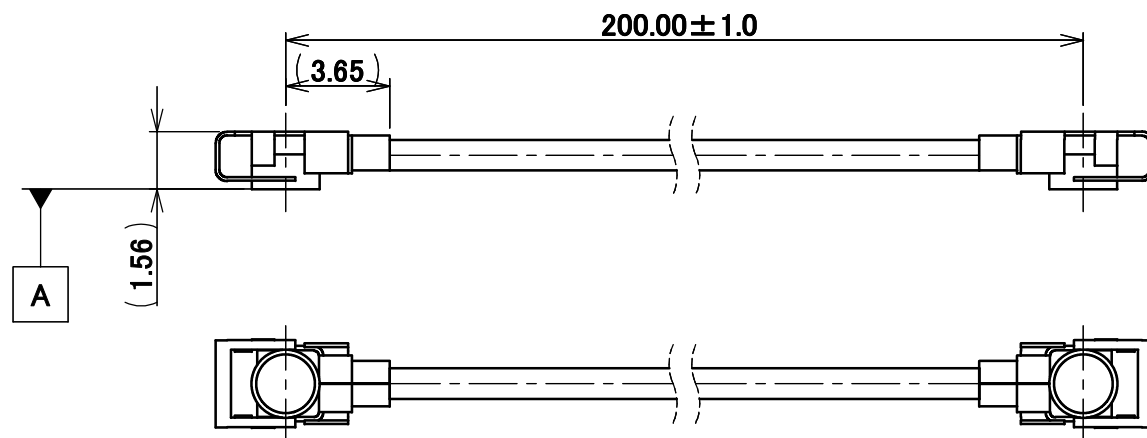
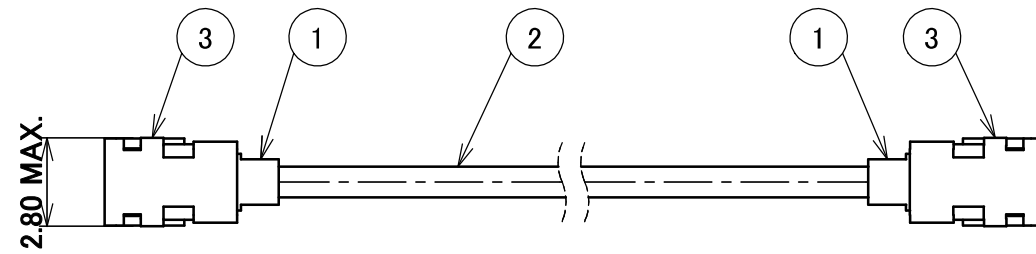
PLEASE CONTACT I-PEX FOR REQUESTS OTHER THAN THIS SPECIFICATIONS.
PLEASE NOTE IF SPECIFICATIONS CHANGE, PART NO. WILL ALSO CHANGE.

NOTES

1. PACKING : PLASTIC BAG
2. PERMISSIBLE LOAD ON THE CABLE AFTER MATING

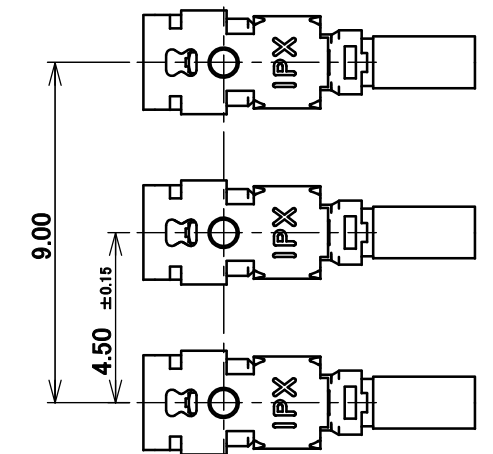
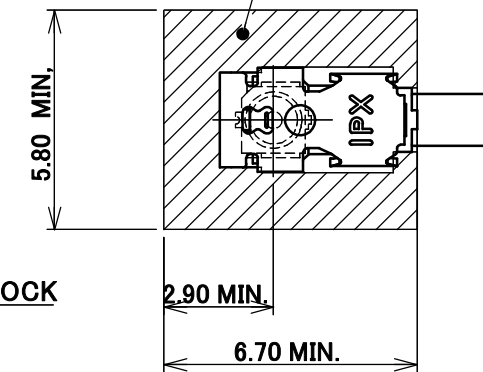


3. CABLE CRIMP STRENGTH : 15N MIN.
4. ORIENTATION OF CONNECTORS : $0^\circ \pm 45^\circ$
5. TO OPERATE LOCK PART
FOLLOW I-PEX INSTRUCTION MANUAL HIM-19002.
6. DO NOT ROTATE THE PLUG IN THE MATING CONDITION.



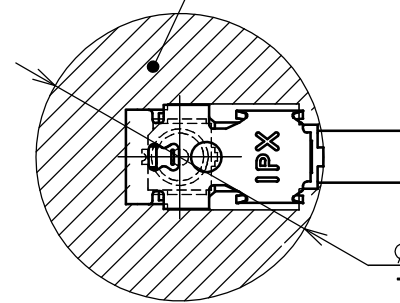
MULTIPLE CONNECTORS LAYOUT

COMPONENTS PLACEMENT PROHIBITED AREA
REQUIRED AREA FOR RECOMMENDED JIG
TO OPERATE MHF 4L LK HARNESS IN
4.50 ± 0.15 mm PITCH (M.2 PITCH) SMOOTHLY.
JIG PART NUMBER: 91493-0001

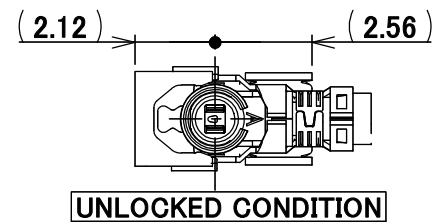


SINGLE CONNECTOR LAYOUT

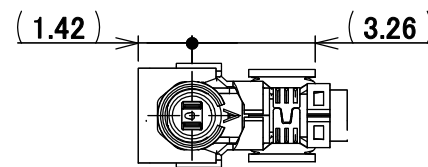
COMPONENTS PLACEMENT PROHIBITED AREA
FOR PLUG 360° ROTATION AND UNMATING AND LOCK
JIG PART NUMBER: 91166-0001, 91493-0001



MATING AND LOCK CONDITION
WITH MHF 4L LK HARNESS



UNLOCKED CONDITION



LOCKED CONDITION

DO NOT MATE WITH RECEPTACLE
UNDER THIS LOCKED CONDITION.

MATING AND LOCK CONDITION
WITH MHF 4L LK HARNESS NARROW PITCH

MHF 4L LK HARNESS UNLOCK CONDITION
NARROW PITCH DIMENSIONS

3	LOCK PART	2	Ni PLATING
2	CABLE	1	AWG#30 Φ 1.37, BRAIDED SHIELD, BLACK
1	CONNECTOR-1, 2	2	MHF 4L Ni Top
NO.	DESCRIPTION	QTY	REMARK

REVISION RECORD					ANGLE	$\pm 2^\circ$	6 OVER 30 MAX.	± 0.3	PROJECTION	SERIES No.	CUSTOMER COPY				
					6 MAX.	± 0.2	30 OVER 120 MAX.	± 0.5		H-230031B					
					GENERAL TOLERANCE.				TITLE	SCALE					
					DWG.	M.Toida			DATE		2023/09/22		MHF [®]		
					CHK.	K.Yufu					4L-4L CABLE137-1		X:1		
					APP.	Y.Hashimoto					+LK		UNIT		
					REV.	ECN	BY	DATE	APP.	DWG. No.		8-21-0044		mm	
													I-PEX		
													SIZE		
													SHEET		
													1/1		
													REV.		
													0		



Halogen Free



RoHS Compliant

Confidential C

I-PEX Inc.

QKE-DFE06-02 REV.12