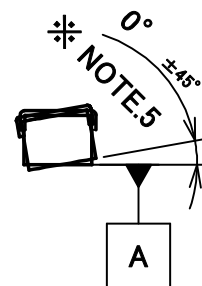
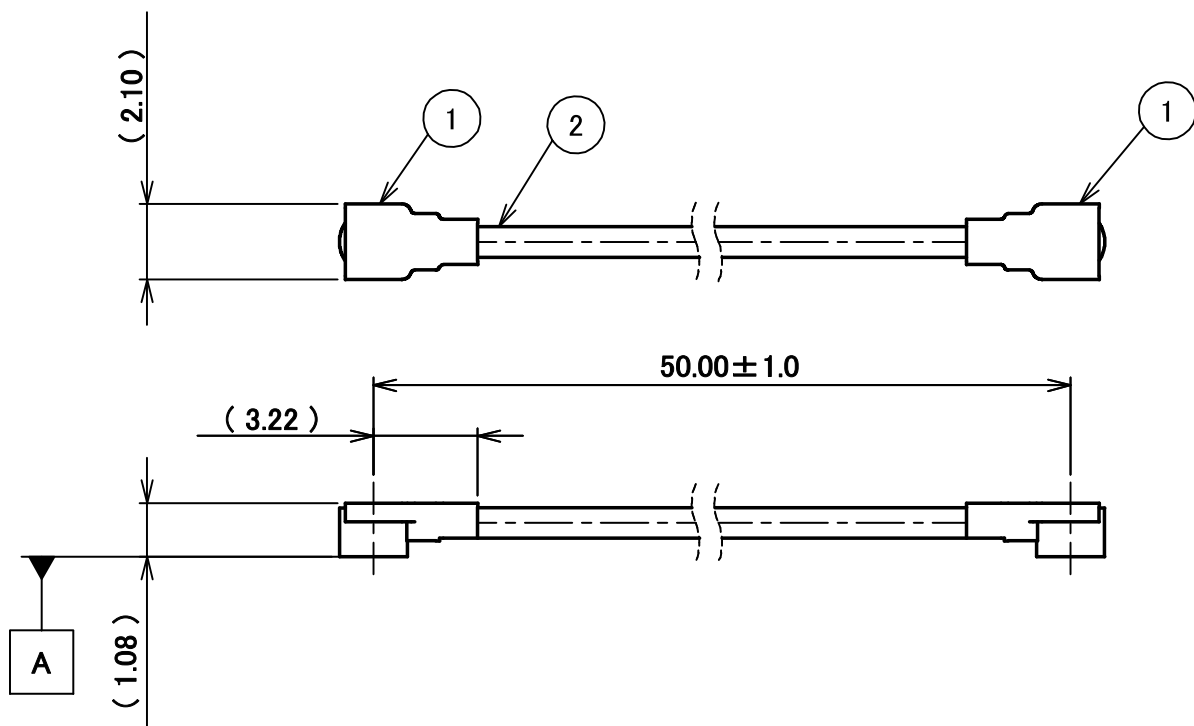


PART NO.

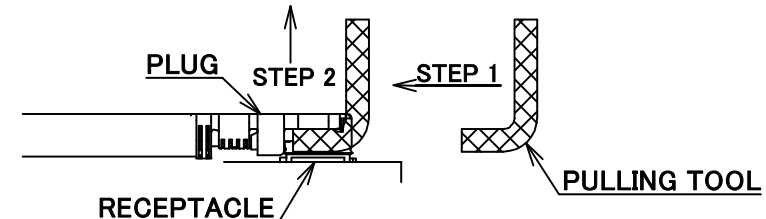
8-23-0115

PLEASE CONTACT I-PEX FOR REQUESTS OTHER THAN THIS SPECIFICATIONS.
PLEASE NOTE IF SPECIFICATIONS CHANGE, PART NO. WILL ALSO CHANGE.

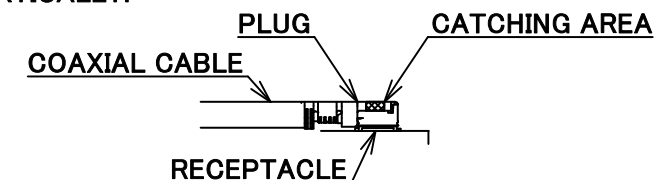


NOTES

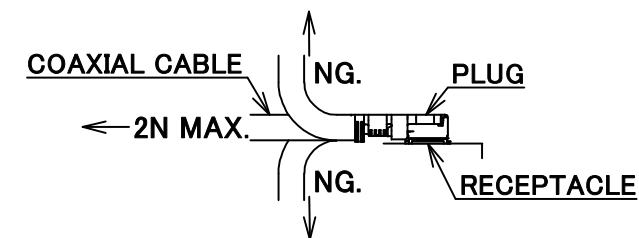
1. SUGGESTIONS FOR MATING & UNMATING OPERATION.
 - 1-1. MATING
MATE THE CONNECTOR VERTICALLY, ALIGNING THE MATING AXIS ON PLUG AND RECEPTACLE. DO NOT SLANT MATE.
 - 1-2. UNMATING
 - 1-2-1.
UNMATING BY PULLING TOOL.
[P/N 90609-0001 (MHF 4L)]
USE THE PULLING TOOL AS THE FOLLOWING, AND PULL PLUG TO VERTICAL DIRECTION AS DIRECTLY AS POSSIBLE.
 - 1-2-2.
UNMATING DIRECTLY BY HAND.
HOLD THE CATCHING AREA ON PLUG AND PULL THE PLUG VERTICALLY.



- 1-2-2.
UNMATING DIRECTLY BY HAND.
HOLD THE CATCHING AREA ON PLUG AND PULL THE PLUG VERTICALLY.



2. PACKING : PLASTIC BAG
3. PERMISSIBLE LOAD ON THE CABLE AFTER MATING



4. CABLE CRIMP STRENGTH : 15N MIN.
5. ORIENTATION OF CONNECTORS : 0° ± 45°

| | | | |
|-----|----------------|-----|--------------------------------------|
| 2 | CABLE | 1 | AWG#32 Φ 1.13, BRAIDED SHIELD, BLACK |
| 1 | CONNECTOR-1, 2 | 2 | MHF 4L Ni Top |
| NO. | DESCRIPTION | QTY | REMARK |

CONSTRUCTIONS

| | | | | | | | |
|--------------------|-------------|------------------|------------|--------------------------|------------|---------------|---|
| ANGLE | ±2° | 6 OVER 30 MAX. | ±0.3 | PROJECTION | SERIES No. | CUSTOMER COPY | |
| 6 MAX. | ±0.2 | 30 OVER 120 MAX. | ±0.5 | | H-230031L | | |
| GENERAL TOLERANCE. | | | | TITLE | SCALE | I-PEX | |
| DWG. | M.Toida | DATE | 2023/09/25 | MHF® 4L-4L CABLE113-1 | X/1 | | |
| CHK. | K.Yufu | | | DWG. No. | UNIT | mm | |
| APP. | Y.Hashimoto | | | 8-23-0115 | SIZE | | |
| REV. | ECN | BY | DATE | APP. | SHEET | REV. | |
| REVISION RECORD | | | | | A3 | 1/1 | 0 |



Halogen Free



RoHS Compliant