

Recommended P/N

20851-001R

PART No.

20851-001R

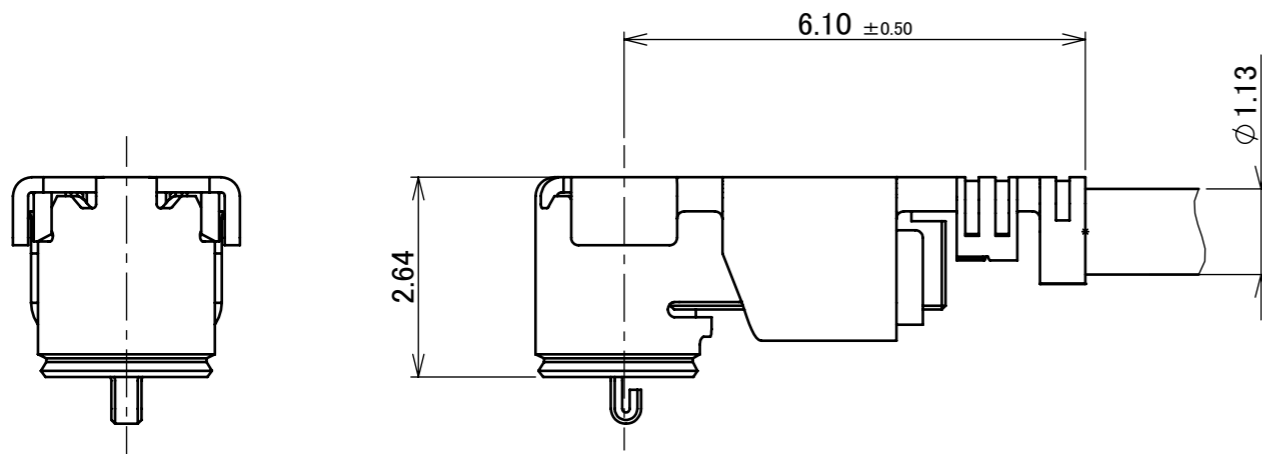
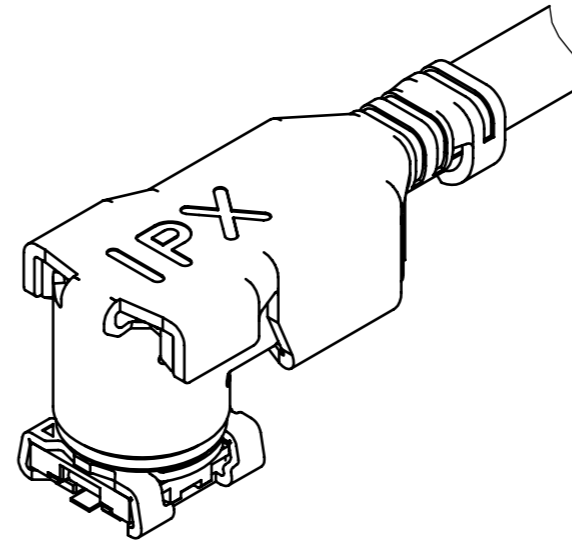
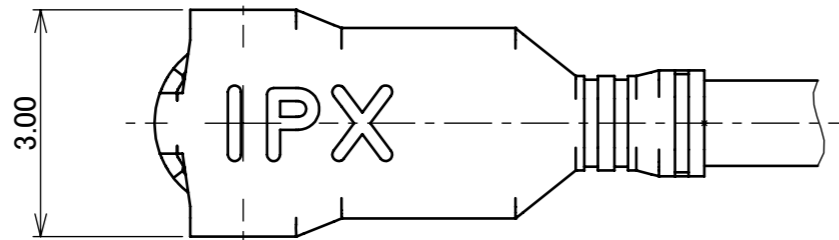
Offered as harness only.



Halogen Free



RoHS Compliant



NOTES

1. MATING AND UNMATING INSTRUCTION

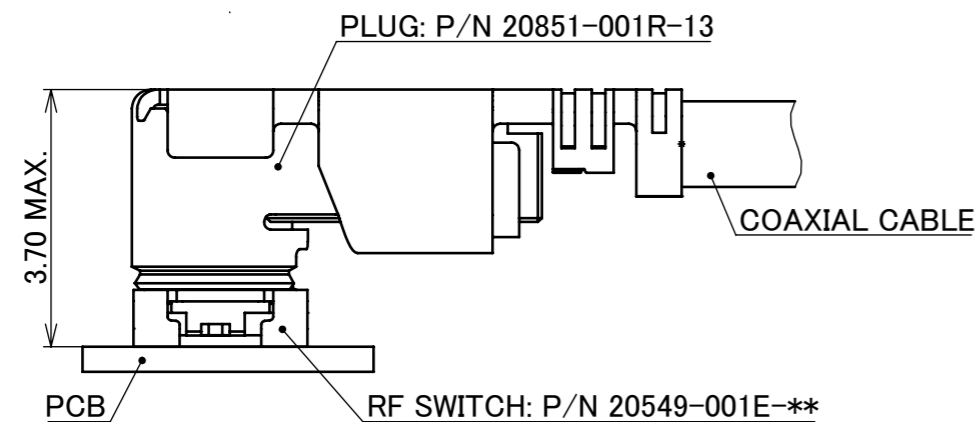
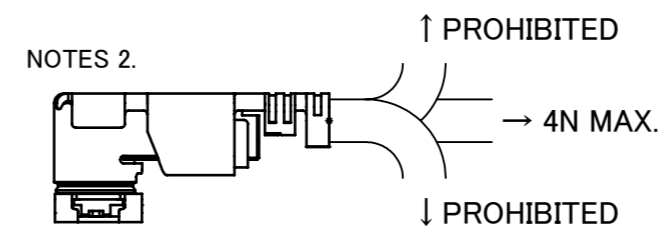
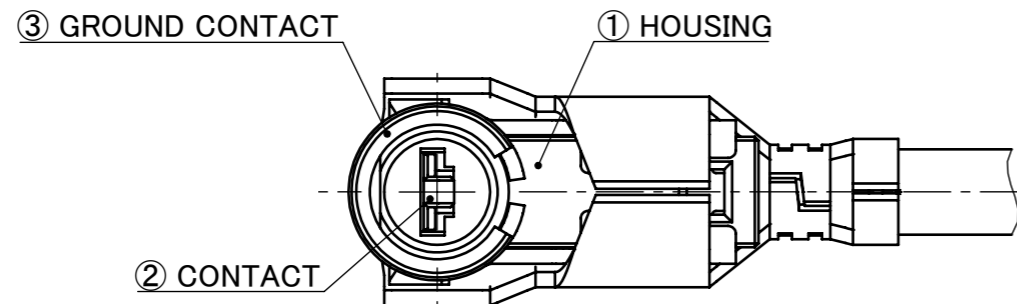
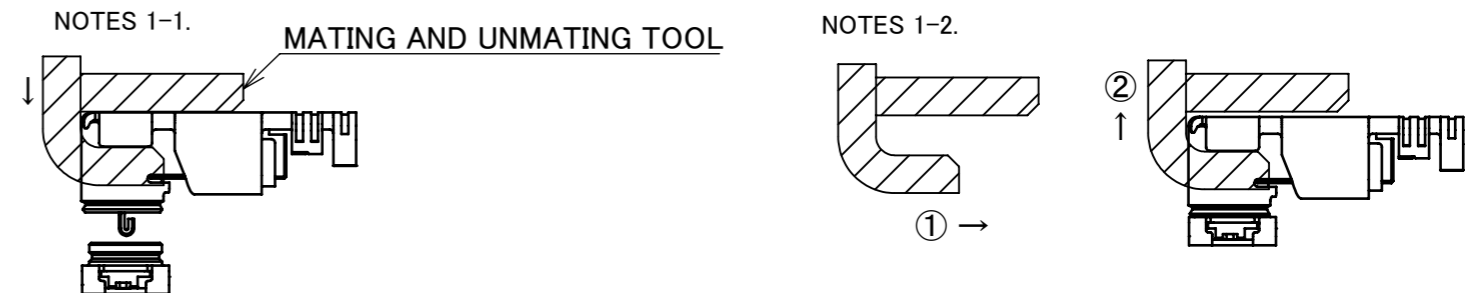
1-1. MATING

MATE THE CONNECTOR VERTICALLY AS MUCH AS POSSIBLE, ADJUSTING THE MATING AXIS OF PLUG AND SWITCH. DO NOT SLANT MATE.

1-2. UNMATING

USE THE MATING AND UNMATING TOOL (PART NO. 91396-0001) AS THE FOLLOWING DRAWING. AND PULL PLUG TO VERTICAL DIRECTION AS DIRECTLY AS POSSIBLE.

2. PERMISSIBLE LOAD OF CABLE AT MATING.

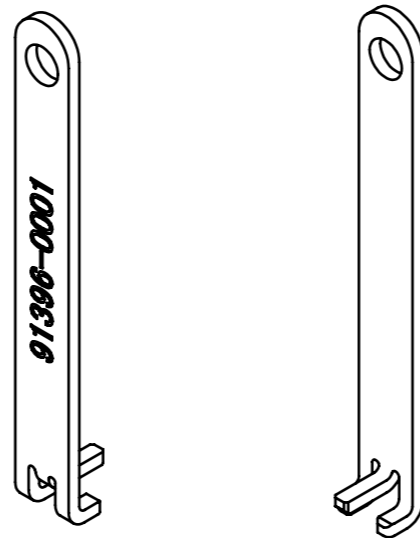


MATING CONDITION

3	GROUND CONTACT	PHOSPHOR BRONZE	Au OVER Ni					
2	CONTACT	PHOSPHOR BRONZE	Au OVER Ni					
1	HOUSING	LCP	UL94V-0, BLACK					
NO.	DESCRIPTION	MATERIAL	FINISH, REMARKS					
		ANGLE $\pm 2^\circ$ 6 OVER 30 MAX. ± 0.3	PROJECTION SERIES No. R5 CUSTOMER COPY					
		6 MAX. ± 0.2 30 OVER 120 MAX. ± 0.5	TITLE MHF® -SW23 PLUG SCALE 10:1 UNIT I-PEX					
2	Z240772	H.T	2024/06/18	Yufu	DWG. Y.Imaji	DATE 2018/03/15	DWG. No. 20851	SIZE A3 SHEET 1/3 REV. 2
1	Z220622	H.T	2022/06/02	Y.H	CHK. T.Yamauchi			
0	Z180344	Y.I	2018/03/15		APP. K.Yotsutani			
REV.	ECN	BY	DATE	APP.	REVISION RECORD			

ITEMS	SPECIFICATION
APPLICABLE CONNECTOR PART No.	20549-001E-**
RATING FREQUENCY	DC~9 GHz
OPERATING TEMPERATURE	233~358 K (-40°C~+85°C)
OPERATING HUMIDITY	90% MAX.(NON-CONDENSING)
VSWR (MATED WITH SMA ADAPTER No. 91183-0001)	1.40 MAX. AT 0.3~3 GHz 1.60 MAX. AT 3~6 GHz 2.00 MAX. AT 6~9 GHz
MAIN CONTACT RESISTANCE	INITIAL : 100 mohm MAX. / AFTER TEST : 100 mohm MAX.
GROUND CONTACT RESISTANCE	INITIAL : 100 mohm MAX. / AFTER TEST : 100 mohm MAX.
INSULATION RESISTANCE	INITIAL : 1000 Mohm MIN. / AFTER TEST : 10 Mohm MIN.
DIELECTRIC WITHSTANDING VOLTAGE	AC 200 V 1min
DURABILITY	30 CYCLES
UNMATING FORCE (INITIAL / AFTER TEST)	5 N MIN. / 3 N MIN.
CRIMP STRENGTH	10 N MIN.
PRODUCT SPECIFICATION	PRS-2522
TEST REPORT	TR-18076
PACKING STANDARD	PST-19024
INSTRUCTION MANUAL	HIM-18020
APPEARANCE CRITERIA No.	QLS-A***

ANGLE	±2°	6 OVER 30 MAX.	±0.3	PROJECTION 	SERIES No. R5	CUSTOMER COPY		
6 MAX.	±0.2	30 OVER 120 MAX.	±0.5					
GENERAL TOLERANCE.				TITLE MHF® -SW23 PLUG	SCALE 5:1	I-PEX		
DWG.	DATE							
CHK.								
APP.								
				DWG. No.	20851	SIZE A3	SHEET 2/3	REV. 2



MHF-SW23 PLUG MATING AND UNMATING TOOL
PART NO. 91396-0001

ANGLE	±2°	6 OVER 30 MAX.	±0.3	PROJECTION 	SERIES No. R5	CUSTOMER COPY		
6 MAX.	±0.2	30 OVER 120 MAX.	±0.5					
GENERAL TOLERANCE.				TITLE MHF® -SW23 PLUG	SCALE 2:1	UNIT I-PEX		
DWG.	DATE							
CHK.								
APP.								
				DWG. No.	20851	SIZE A3	SHEET 3/3	REV. 2