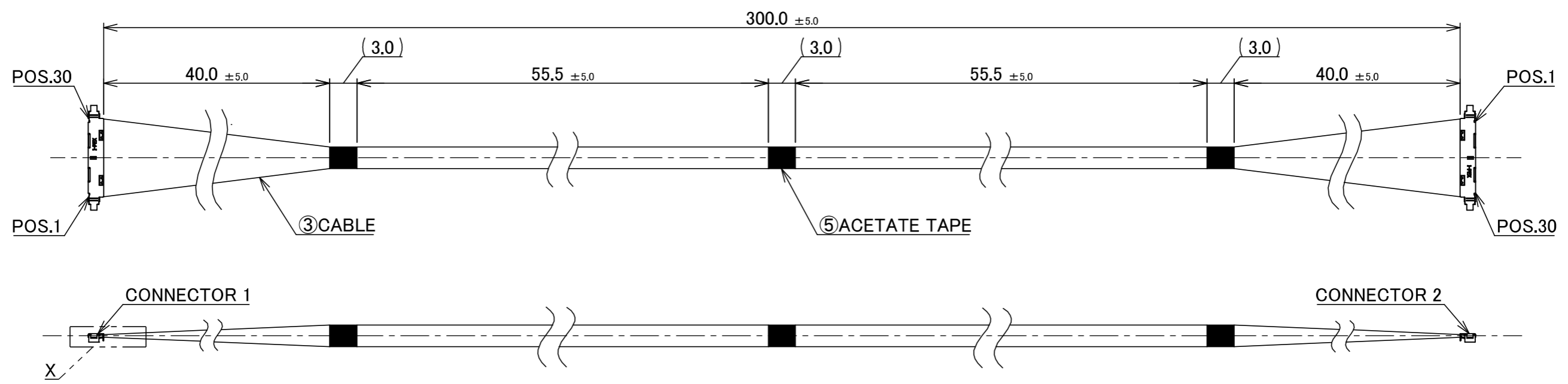
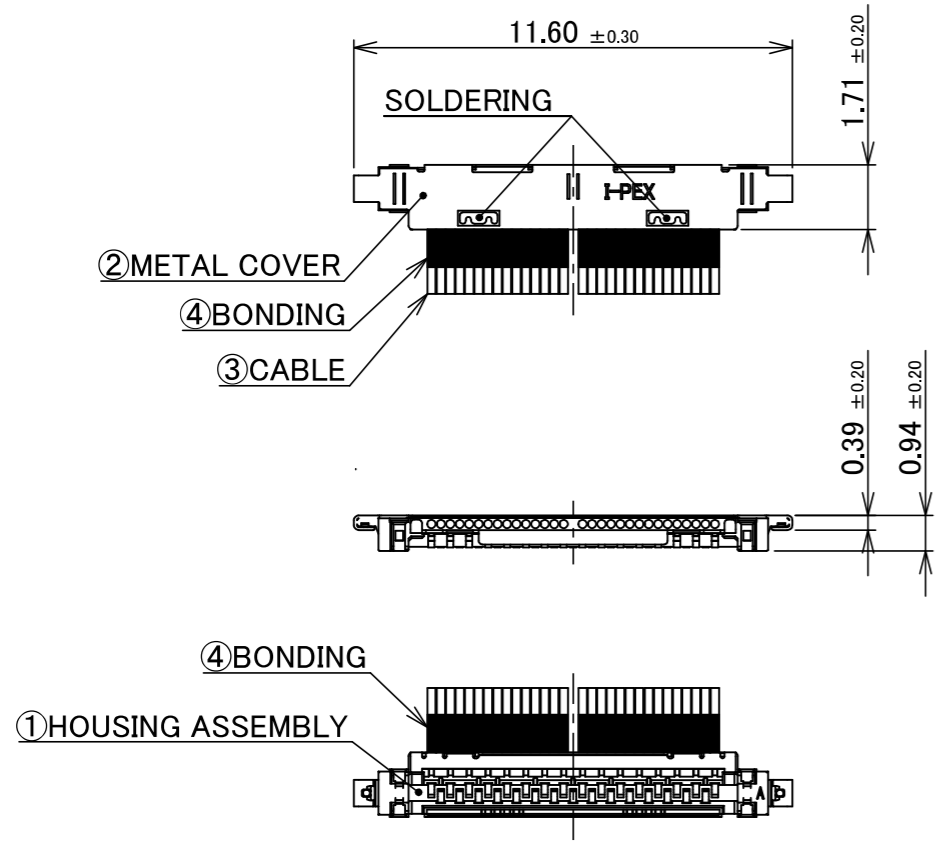
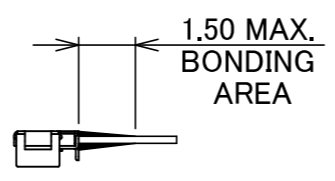


PART NO.
82070-100B-02-D



- NOTE.
1. TO HANDLE THIS CONNECTOR YOU MUST READ AND FOLLOW THE INSTRUCTION MANUAL BELOW. I-PEX INSTRUCTION MANUAL No.HIM-10001.
 2. ELECTRIC CHARACTERISTICS
WITHSTANDVOLTAGE : AC 100V LEAKAGE CURRENT 2.0mA MAX.
INSULATION RESISTANCE : 50MΩ MIN. DC 100V
 3. THE OPERATING TEMPERATURE OF THE HARNESS : 80°C MAX.
 4. RATING VOLTAGE : 30V

CONNECTOR 1&2
(S=5/1)



PIN ASSIGNMENT		
CONNECTOR 1	CABLE	CONNENTOR 2
30	MICRO-COAXIAL CABLE AWG #46 50 OHM, BLUE	1
29	MICRO-COAXIAL CABLE AWG #46 50 OHM, BLUE	2
·	MICRO-COAXIAL CABLE AWG #46 50 OHM, BLUE	·
·	MICRO-COAXIAL CABLE AWG #46 50 OHM, BLUE	·
·	MICRO-COAXIAL CABLE AWG #46 50 OHM, BLUE	·
2	MICRO-COAXIAL CABLE AWG #46 50 OHM, BLUE	29
1	MICRO-COAXIAL CABLE AWG #46 50 OHM, BLUE	30

NO.	DESCRIPTION	PARTS NO.	QTY	REMARK
5	ACETATE TAPE	-	3	BLACK
4	BONDING	-	-	UV GLUE
3	CABLE	-	30	MICRO-COAXIAL CABLE AWG #46, 50 OHM, BLUE
2	METAL COVER	2799-0301	2	CONNECTOR 1 & 2 CABLIN [®] -UX II PLUG P/N : 20531-030T-02-1 CONNECTOR TO BE MATED : 20533-230E
1	HOUSING ASSEMBLY	20532-030T-02-1	2	

REV.	ECN	BY	DATE	APP.	DESCRIPTION	ANGLE	6 OVER 30 MAX.	±0.3	PROJECTION	SERIES No.	CUSTOMER COPY	
2	Z241668	K.B	Nov./26/'24	H.I	DWG.	±2°	6 OVER 30 MAX.	±0.3		IH-200016	CUSTOMER COPY	
1	Z240878	K.B	July/03/'24	H.I	DATE	6 MAX.	±0.2	30 OVER 120 MAX.				±0.5
0	Z240350	K.B	Mar./21/'24		CHK.							
REV.	ECN	BY	DATE	APP.	APP.	GENERAL TOLERANCE.			TITLE	SCALE		
									CABLIN [®] -UX II 30P HARNESS	2:1		
											UNIT	
											mm	
											SIZE	
											A3	
											SHEET	
											1/1	
											REV.	
											2	