

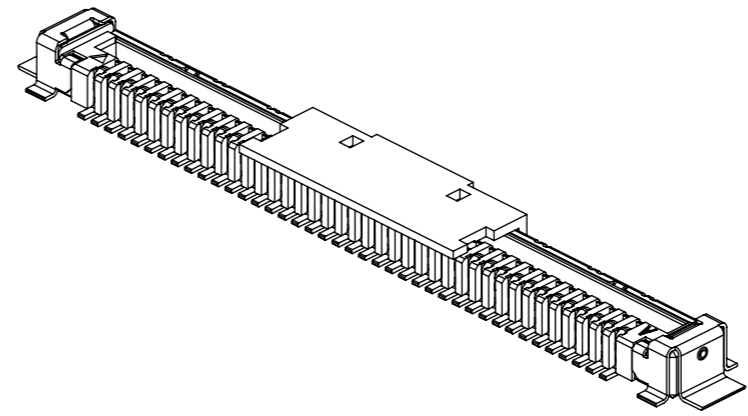
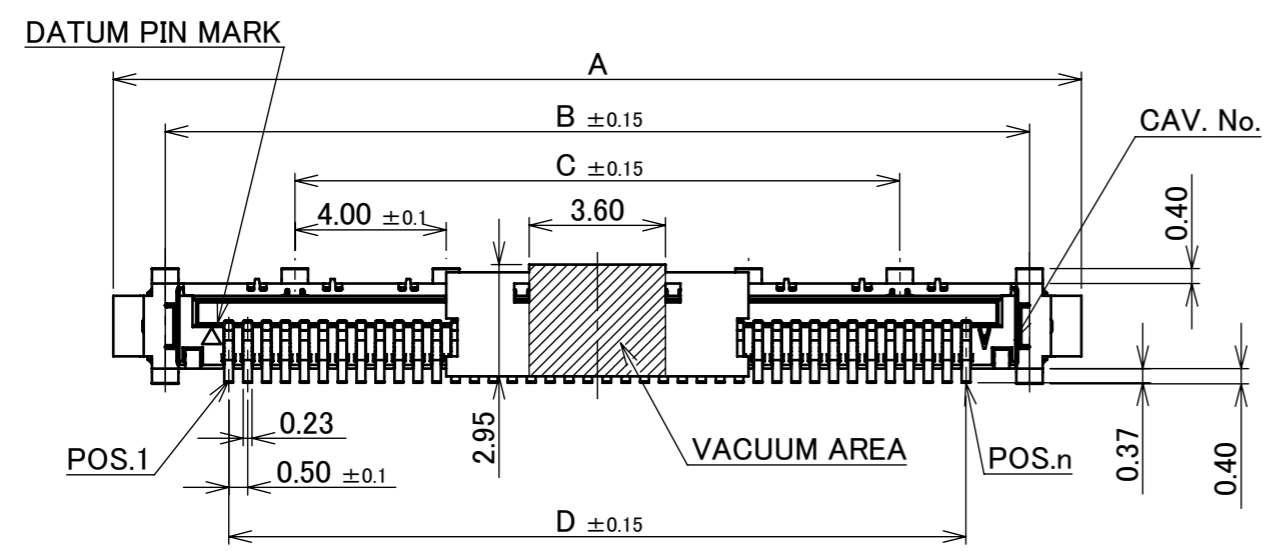
Recommended P/N 20439-0\*\*E-01

PART NO.	Pos.	A	B	C	D
20439-030E-*1	30	20.60	17.86	12.00	14.50
20439-040E-*1	40	25.60	22.86	16.00	19.50
20439-050E-*1	50	30.60	27.86	20.00	24.50



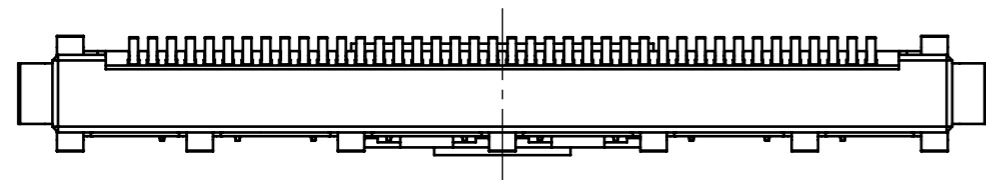
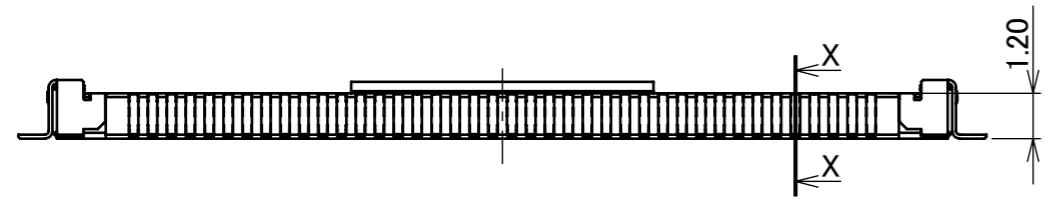
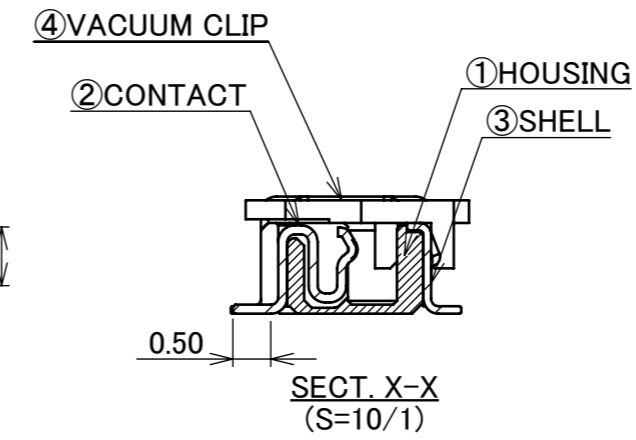
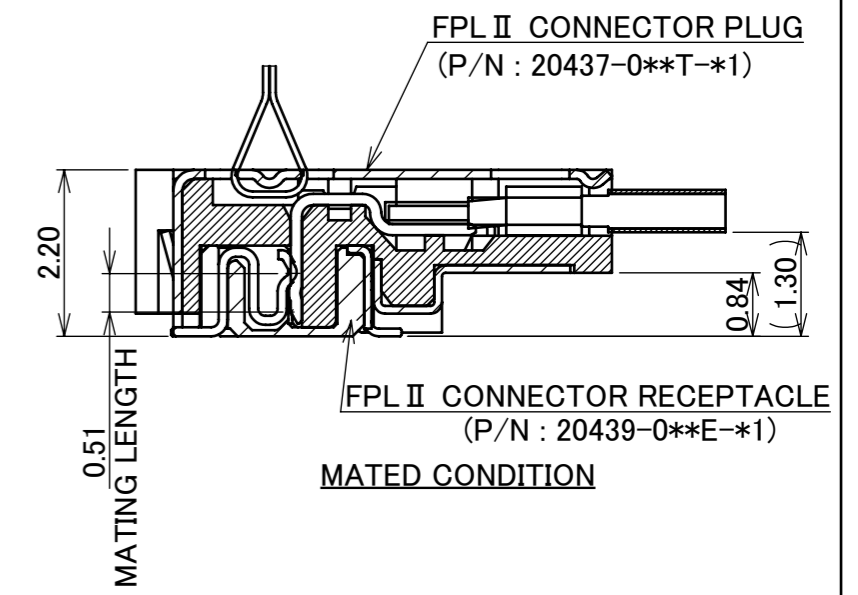
Halogen Free RoHS Compliant

PART NO.	CONTACT FINISH (MATING SIDE)
20439-0**E-01	Au 0.1 μm MIN.
20439-0**E-11	Au 0.3 μm MIN.



MATING COMBINATION TABLE

Pos.	PLUG PART NO.	RECEPTACLE PART NO.
30P	20437-030T-*1	20439-030E-*1
40P	20437-040T-*1	20439-040E-*1
50P	20437-050T-*1	20439-050E-*1

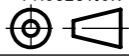



4	VACUUM CLIP	LCP	UL94V-0, BEIGE
3	SHELL	PHOSPHOR BRONZE	Sn(NO POLISH) 0.50 μm MIN. OVER Ni 1.00 μm MIN.
2	CONTACT	PHOSPHOR BRONZE	<u>PART NO. 20439-0**E-0*</u> MATING AREA : Au 0.10 μm MIN. OVER Ni 1.00 μm MIN. OTHER AREA : Au 0.05 μm MIN. OVER Ni 1.00 μm MIN.  <u>PART NO. 20439-0**E-1*</u> MATING AREA : Au 0.30 μm MIN. OVER Ni 1.00 μm MIN. OTHER AREA : Au 0.05 μm MIN. OVER Ni 1.00 μm MIN.
1	HOUSING	LCP	UL94V-0, BLACK
NO.	DISCRIPTION	MATERIAL	FINISH , REMARKS

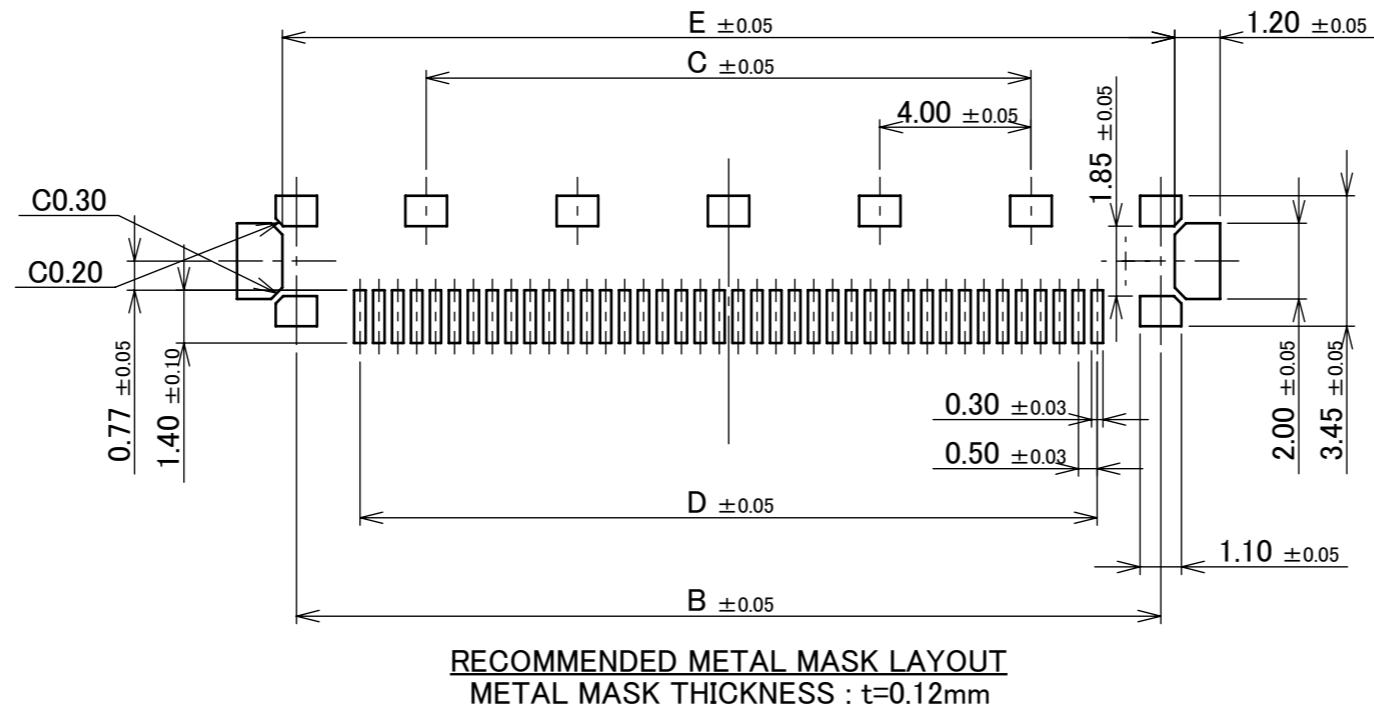
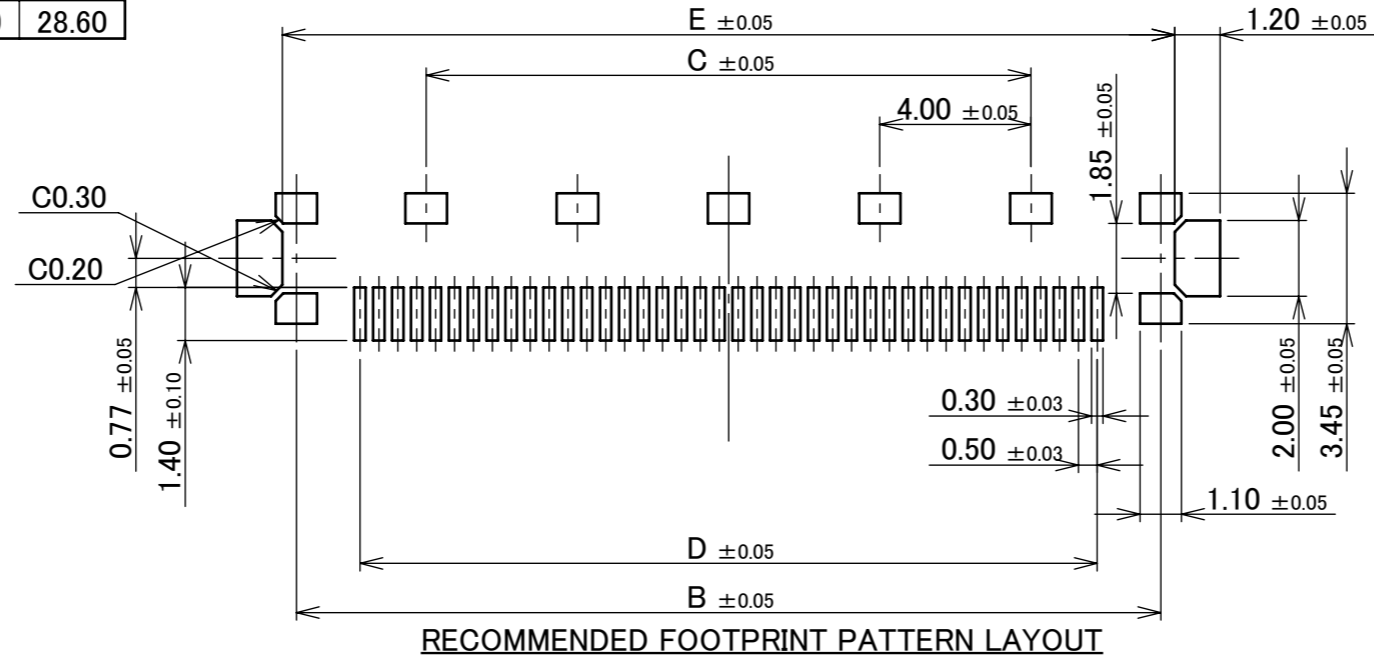
**CAUTION** VISIT OUR WEBSITE FOR LATEST VERSIONS OF INSTRUCTION MANUAL NO. HIM-09007 TO HANDLE THE PRODUCT PROPERLY AND SAFELY.

24	Z240753	W.L	2024/06/17	M.T	ANGLE	±2°	6 OVER 30 MAX.	±0.3	PROJECTION	SERIES No. R4	CUSTOMER COPY
23	Z231014	H.U	2023/09/26	T.M	6 MAX.	±0.2	30 OVER 120 MAX.	±0.5			
22	Z210569	T.M	2021/06/01	H.I	GENERAL TOLERANCE.			TITLE FPL™ II RECEPTACLE ASSEMBLY	SCALE 5:1	UNIT mm	I-PEX
21	Z191305	Y.Sasa	2019/09/27	H.I	DWG.	K.Tanaka					
20	Z190870	Y.Sasa	2019/07/01	H.I	CHK.	Y.Hashimoto		DWG. No. 20439	SIZE A3	SHEET 1/5	REV. 24
19	Z181398	H.A	2018/10/26	Y.S	APP.	T.Harada					
REV.	ECN	BY	DATE	APP.	REVISION RECORD			DWG. No.	SIZE	SHEET	REV.

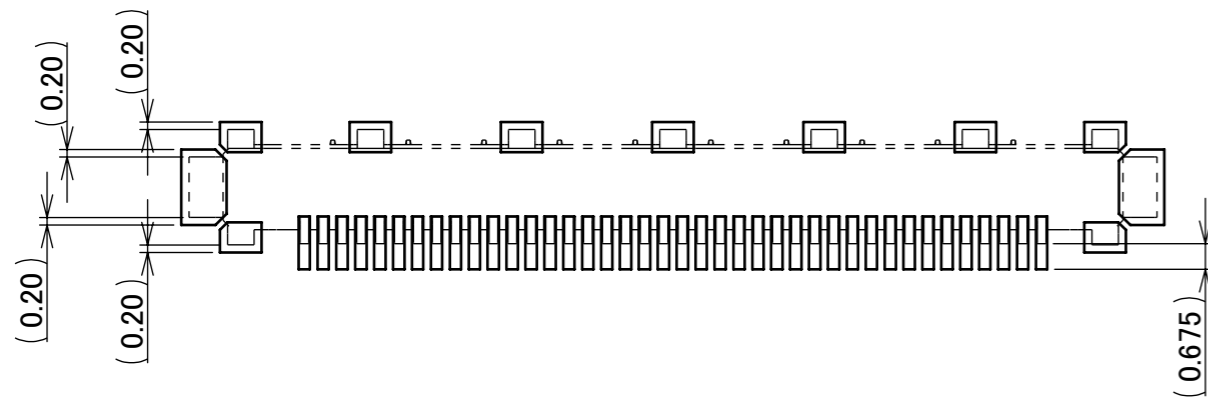
ITEMS	SPECIFICATION
APPLICABLE CABLE	MICRO-COAXIAL CABLE : AWG# 40, 38, 36, 34, 32 DISCRETE WIRE : AWG# 36, 34, 32 TWINAX CABLE : AWG# 40
RATING VOLTAGE	100V AC (PER CONTACT PIN)
RATING AMPERAGE (FOR CONTACT)	0.3A AC/DC [AWG#40] PER CONTACT PIN / UP TO 50 CONTACTS 0.6A AC/DC [AWG#38] PER CONTACT PIN / UP TO 6 CONTACTS 0.8A AC/DC [AWG#36] PER CONTACT PIN / UP TO 4 CONTACTS 1.0A AC/DC [AWG#34, 32] PER CONTACT PIN / UP TO 7 CONTACTS TESTING BY REAL MACHINE IS RECOMMENDED BECAUSE TEMPERATURE RISE MAY AFFECTED BY ACTUAL SITUATION.
OPERATING TEMPERATURE	233~358K(-40°C~+85°C)
OPERATING HUMIDITY	85% MAX.
CONTACT RESISTANCE	INITIAL : 145mohm MAX.(AWG#32) / AFTER TEST : $\triangle$ 40mohm MAX. 185mohm MAX.(AWG#34) 210mohm MAX.(AWG#36) 335mohm MAX.(AWG#38) 575mohm MAX.(AWG#40)
GROUND SHELL RESISTANCE	INITIAL : 50mohm MAX. / AFTER TEST : $\triangle$ 40mohm MAX.
INSULATION RESISTANCE	INITIAL : 1000Mohm MIN. / AFTER TEST : 500Mohm MIN.
DIELECTRIC WITHSTANDING VOLTAGE	AC250V 1min
DURABILITY	30 CYCLES
MATING FORCE (INITIAL / AFTER TEST)	30P : 50.0N MAX. 40P : 60.0N MAX. 50P : 70.0N MAX.
UNMATING FORCE (INITIAL / AFTER TEST)	30P : 5.0N MIN. 40P : 6.0N MIN. 50P : 7.0N MIN.
CABLE RETENTION FORCE	30.0N MIN.
COPLANARITY	0.10 MAX.
PRODUCT SPECIFICATION	PRS-1383
TEST REPORT	TR-07048
PACKING STANDARD	300-583
INSTRUCTION MANUAL	HIM-09007
ASSEMBLY MANUAL	ASM-07005
APPEARANCE CRITERIA No.	QLS-A***

ANGLE	$\pm 2^\circ$	6 OVER 30 MAX.	$\pm 0.3$	PROJECTION 	SERIES No. R4	CUSTOMER COPY		
6 MAX.	$\pm 0.2$	30 OVER 120 MAX.	$\pm 0.5$					
GENERAL TOLERANCE.				TITLE FPL™ II RECEPTACLE ASSEMBLY	SCALE 5:1 UNIT mm			
DWG.	DATE							
CHK.								
APP.								
				DWG. No.	20439	SIZE	SHEET	REV.
						A3	2/5	24

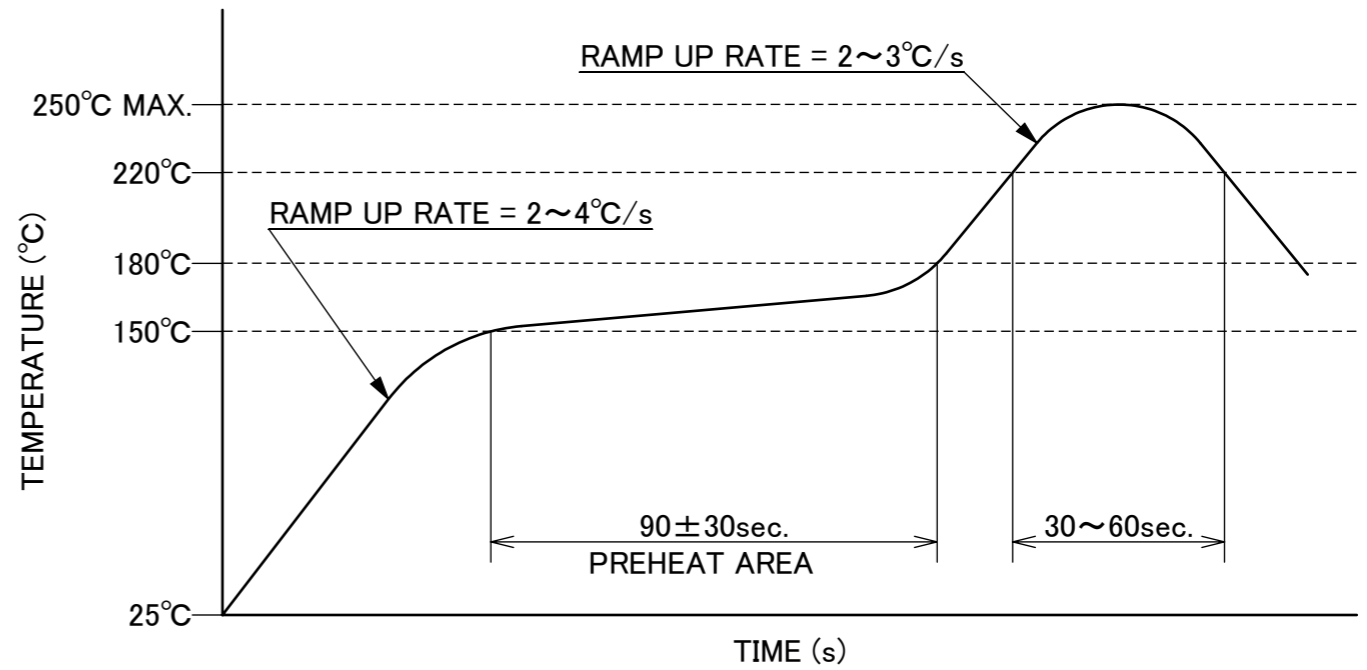
PART NO.	Pos.	B	C	D	E
20439-030E-*1	30	17.86	12.00	14.50	18.60
20439-040E-*1	40	22.86	16.00	19.50	23.60
20439-050E-*1	50	27.86	20.00	24.50	28.60



ANGLE	±2°	6 OVER 30 MAX.	±0.3	PROJECTION ⊕	SERIES No. R4	CUSTOMER COPY		
	6 MAX.	±0.2	30 OVER 120 MAX.					±0.5
GENERAL TOLERANCE.				TITLE FPL™ II RECEPTACLE ASSEMBLY	SCALE 5:1 UNIT mm	<b>I-PEX</b>		
DWG.	DATE							
CHK.								
APP.								
				DWG. No.	20439	SIZE A3	SHEET 3/5	REV. 24



CONNECTOR ON RECOMMENDED FOOTPRINT PATTERN



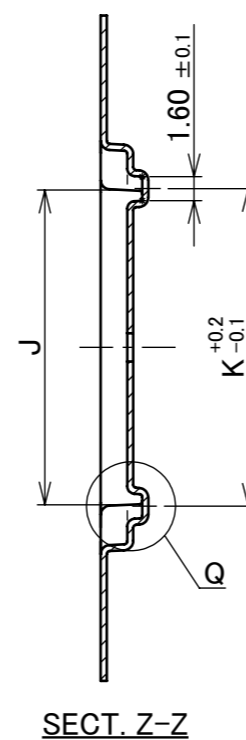
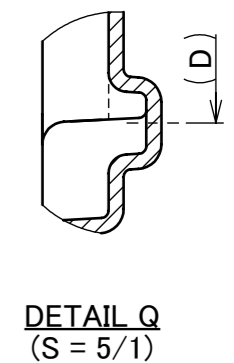
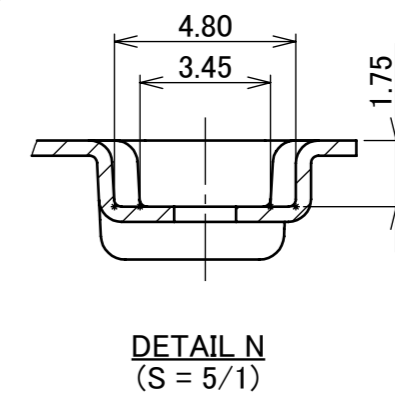
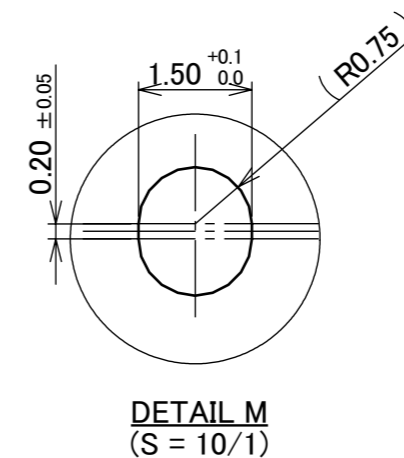
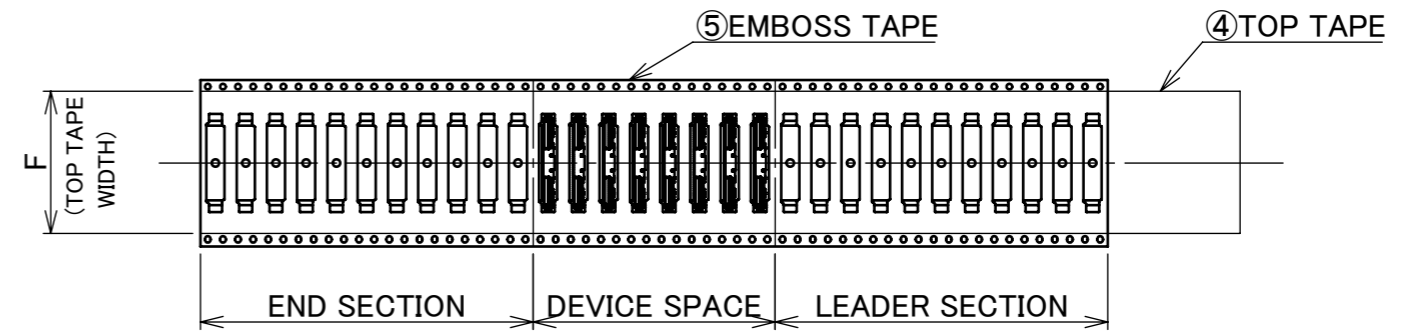
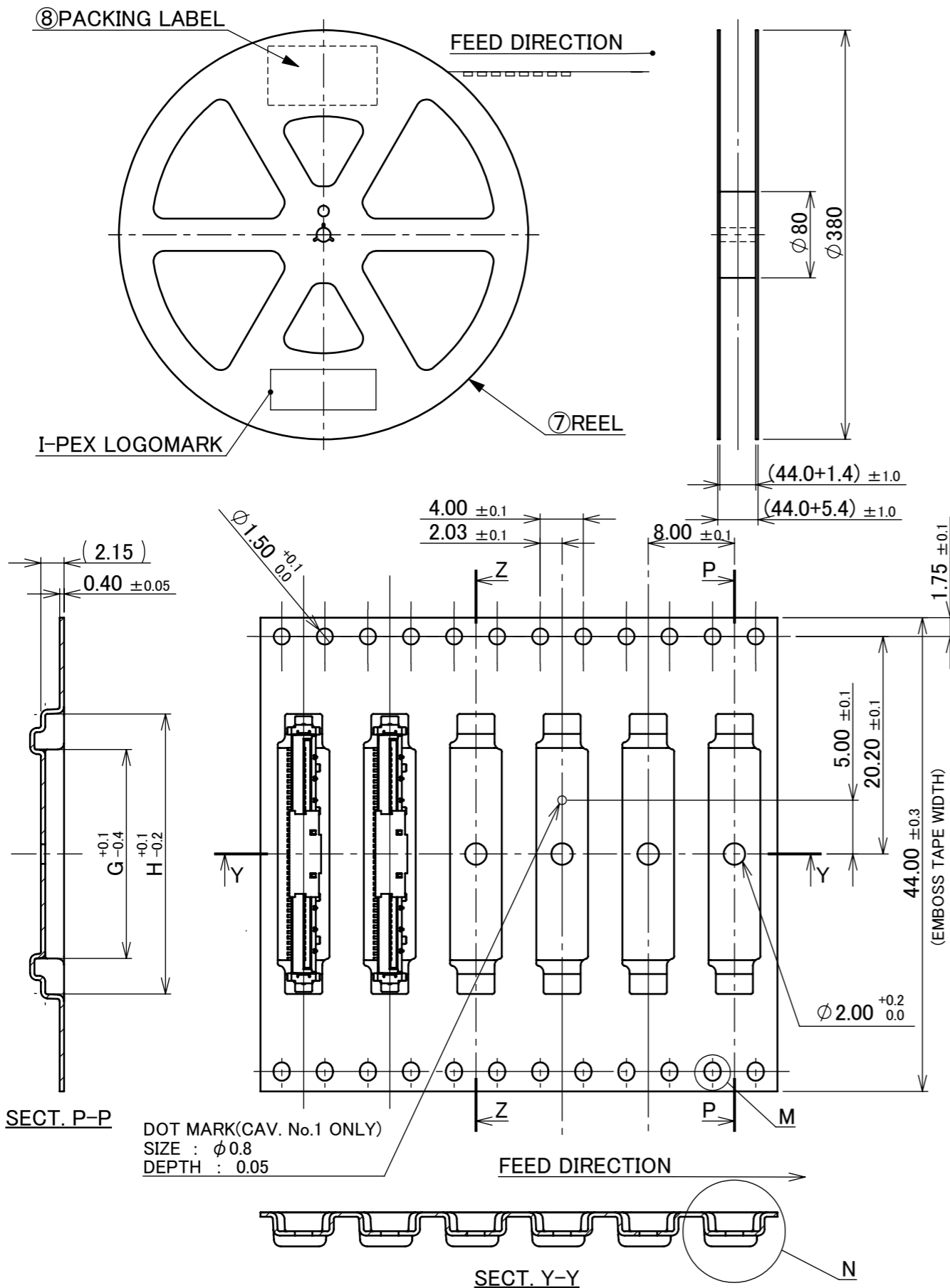
REFLOW TEMPERATURE PROFILE  
 SENJU METAL INDUSTRY CO., LTD. : M705-SHF(Sn96.5 Ag3.0 Cu0.5)

ANGLE	±2°	6 OVER 30 MAX.	±0.3	PROJECTION 	SERIES No. R4	CUSTOMER COPY		
6 MAX.	±0.2	30 OVER 120 MAX.	±0.5					
GENERAL TOLERANCE.				TITLE FPL™ II RECEPTACLE ASSEMBLY	SCALE 5:1 UNIT mm			
DWG.	DATE							
CHK.								
APP.								
				DWG. No.	20439	SIZE A3	SHEET 4/5	REV. 24

PART NO.	Pos.	F	G	H	J	K	QTY. PER EMBOSS REEL (PIECES / REEL)	QTY. PER PACKING CARTON (REELS / CARTON)
20439-030E-*1	30	32.3	14.40	21.00	15.70	16.00	3000 PIECES / REEL	3 REELS / CARTON ( 9000 PIECES / CARTON)
20439-040E-*1	40	37.4	19.40	26.00	20.70	21.00		
20439-050E-*1	50		24.40	31.00	25.70	26.00		

NOTES.

1. TAPING SPECIFICATION FOLLOWS JIS C 0806 (IEC 60286-3).
2. MAKE EMPTY SECTION OF LEADER AND END ON EACH END OF THE TAPE.
3. TOP TAPE SHALL NOT STICK OUT FROM EMBOSS TAPE.
4. TOP TAPE SHALL NOT COVER FEED HOLE.



NO.	DISCRIPTION	MATERIAL	FINISH , REMARKS
8	PACKING LABEL	-	-
7	REEL	PS	ANTI-STATIC TYPE BLACK
6	TOP TAPE	PET t=0.061 TRANSPARENCY	ANTI-STATIC TYPE
5	EMBOSS TAPE	PS t=0.4 TRANSPARENCY	ANTI-STATIC TYPE

ANGLE	±2°	6 OVER 30 MAX.	±0.3	PROJECTION	SERIES No.	CUSTOMER COPY
6 MAX.	±0.2	30 OVER 120 MAX.	±0.5		R4	
GENERAL TOLERANCE.				TITLE	SCALE	
DWG.	DATE			FPL™ II RECEPTACLE ASSEMBLY	2:1	
CHK.					UNIT	
APP.				DWG. No.	mm	
				20439	SIZE	SHEET
					A3	
					5/5	24