

Recommended P/N 20438-0**T-01

PART No.	POS.	A	B	C	D
20438-030T-*1	30	17.80	16.80	14.50	20.80
20438-040T-*1	40	22.80	21.80	19.50	25.80
20438-050T-*1	50	27.80	26.80	24.50	30.80

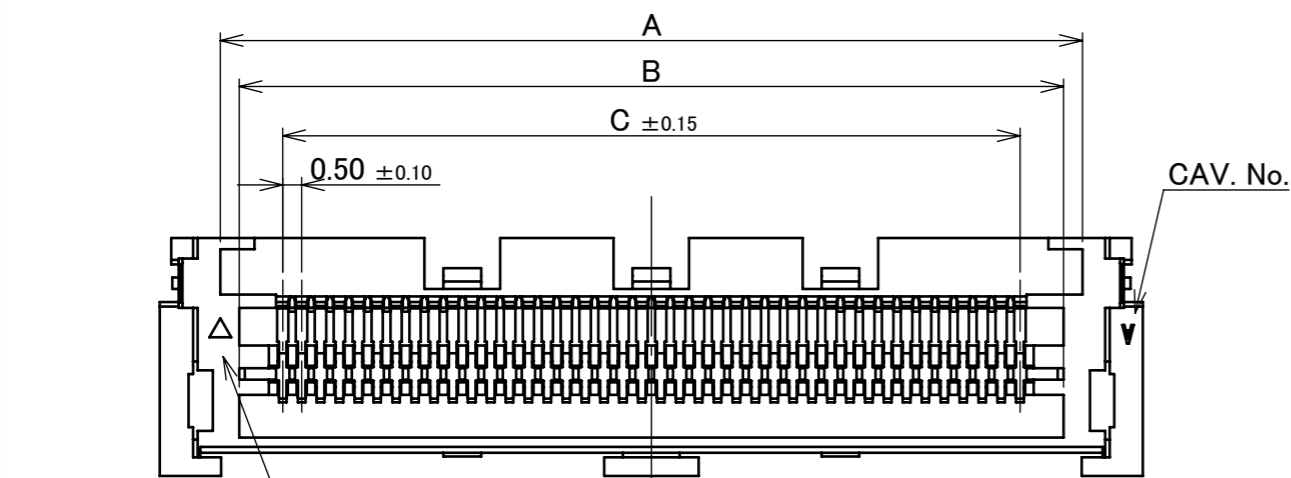
PART NO.	CONTACT FINISH (MATING AREA).
20438-0**T-01	Au 0.10 μm MIN.
20438-0**T-11	Au 0.30 μm MIN.



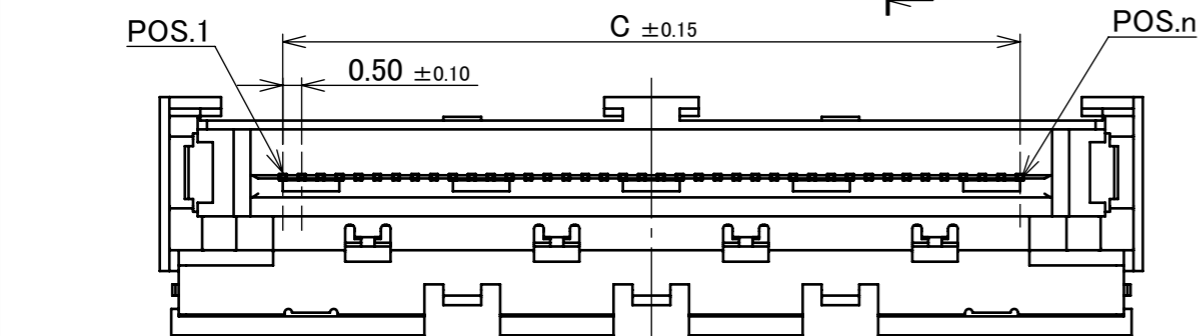
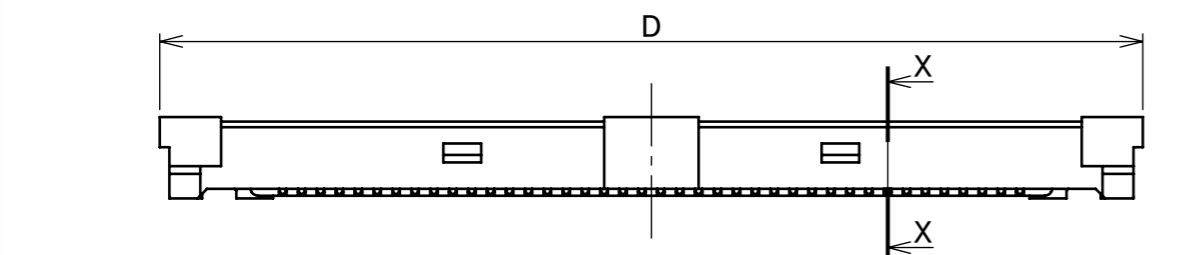
Halogen Free



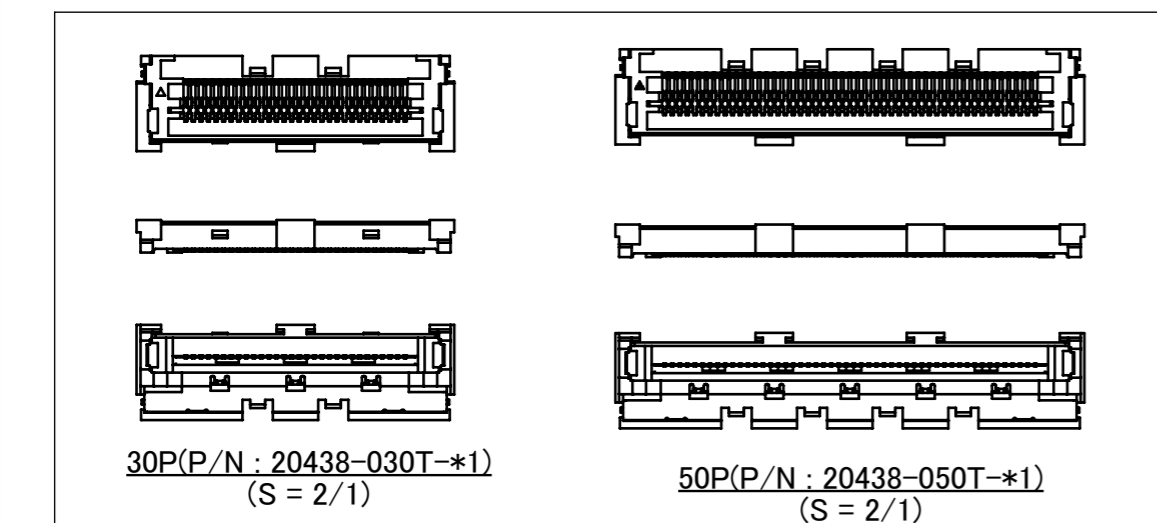
RoHS Compliant



DATUM PIN MARK

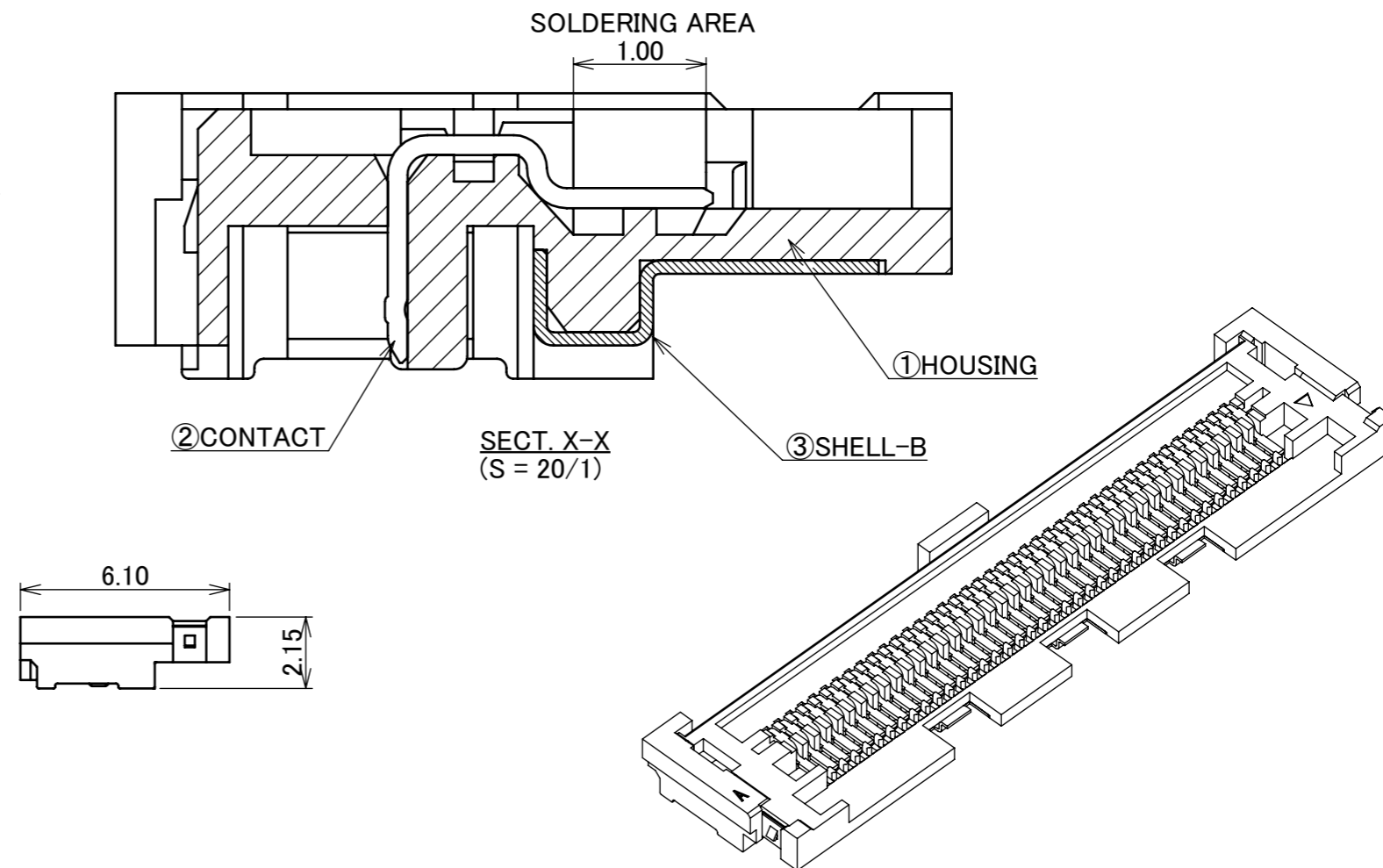


40P(P/N : 20438-040T-*1)



30P(P/N : 20438-030T-*1)
(S = 2/1)

50P(P/N : 20438-050T-*1)
(S = 2/1)



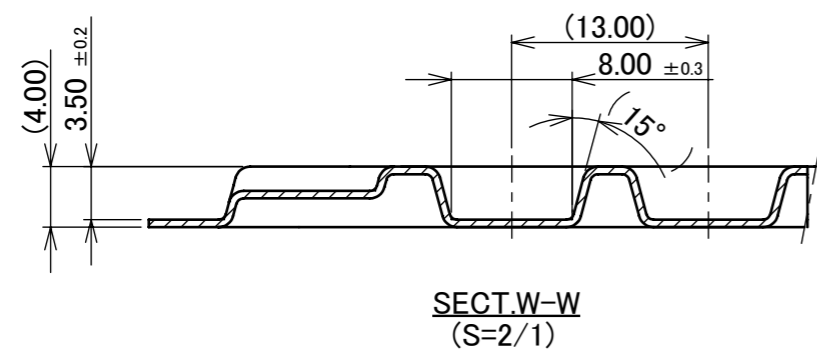
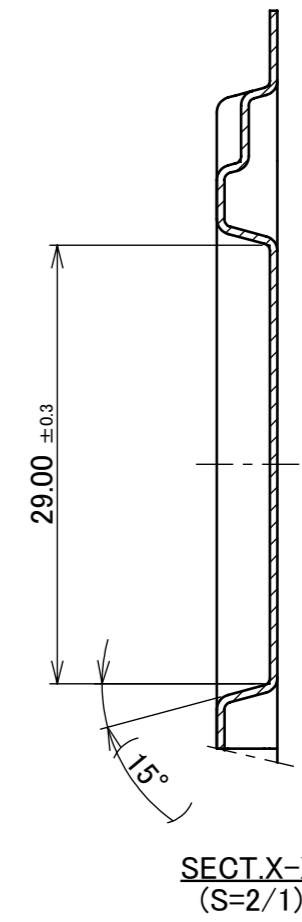
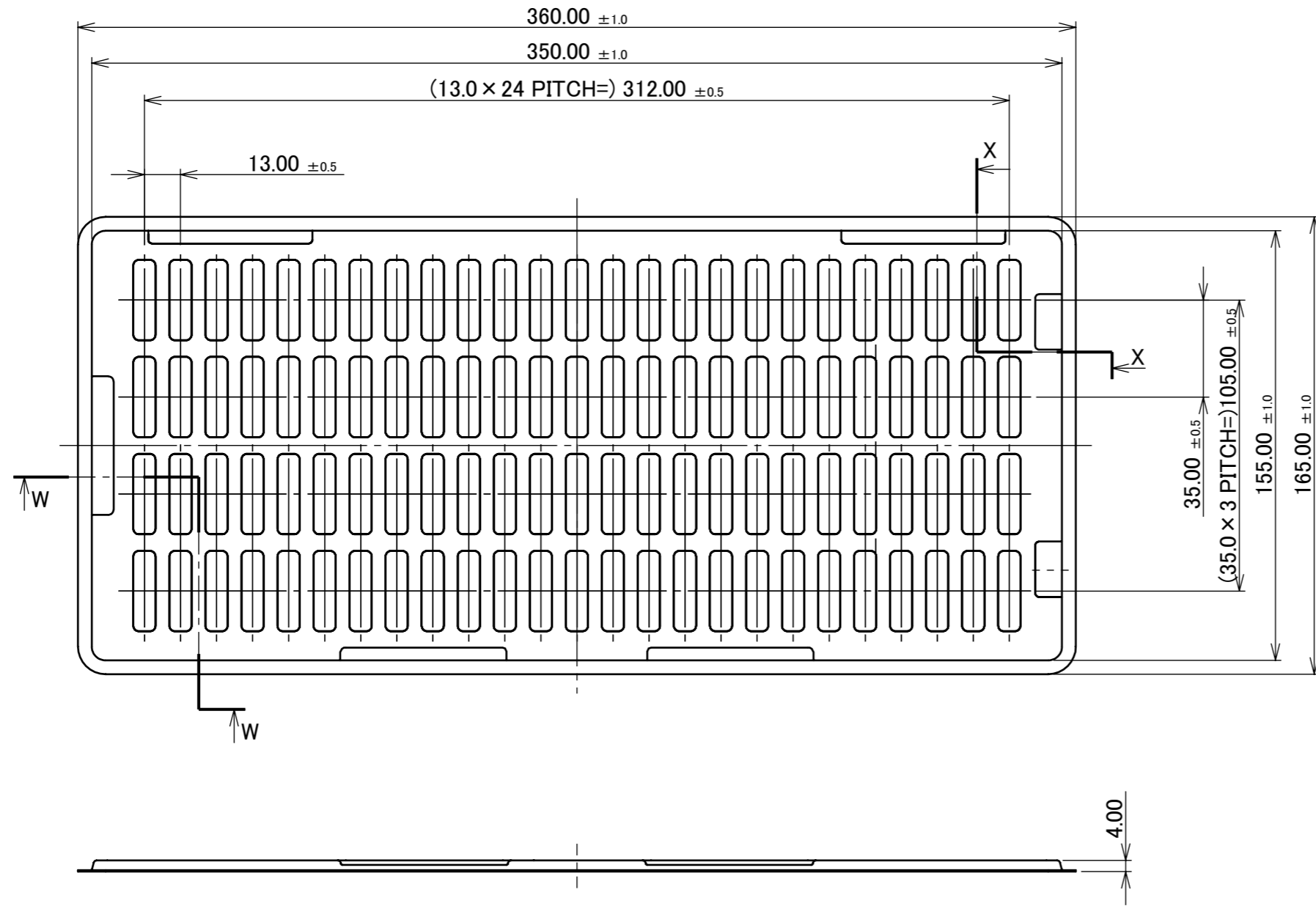
NOTES

- THIS PART IS ASSEMBLE WITH SHELL-A(PART NO. 2496-0**) AFTER SOLDERED THE CABLE. AND IT BECOMES PART NO. 20437-0**T-*1

NO.	DISCRIPTION	MATERIAL	FINISH , REMARKS
3	SHELL-B	PHOSPHOR BRONZE	Sn 2.00 μm MIN. OVER Ni 1.00 μm MIN.
2	CONTACT	PHOSPHOR BRONZE	<u>PART NO. 20438-0**T-01</u> MATING AREA : Au 0.10 μm MIN. OVER Ni 1.00 μm MIN. OTHER AREA : Au 0.05 μm MIN. OVER Ni 1.00 μm MIN. <u>PART NO. 20438-0**T-11</u> MATING AREA : Au 0.30 μm MIN. OVER Ni 1.00 μm MIN. OTHER AREA : Au 0.05 μm MIN. OVER Ni 1.00 μm MIN.
1	HOUSING	LCP	UL94V-0, BLACK

REV.	ECN	BY	DATE	APP.	APP.	PROJECTION	SERIES No.	TITLE	SCALE	SHEET	REV.
13	Z240753	W.L	2024/06/17	M.T	ANGLE	±2°	6 OVER 30 MAX.	±0.3	FPL™ II PLUG HOUSING ASSEMBLY	5:1	I-PEX
12	Z220359	T.Ono	2022/04/01	H.I	6 MAX.	±0.2	30 OVER 120 MAX.	±0.5			
11	Z211198	T.O	2021/10/01	H.I	GENERAL TOLERANCE.				DWG. No. 20438	A3	1/3
10	Z191180	R.M	2019/09/19	H.I	DWG.	DATE	May/30/'07				
9	Z181398	H.A	2018/10/26	Y.S	K.T						
8	Z141380	H.A	2014/12/02	E.K	CHK.	Y.H					
REV.	ECN	BY	DATE	APP.	APP.	T.H					

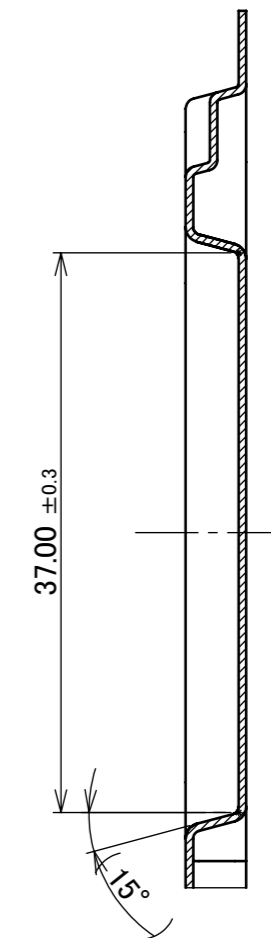
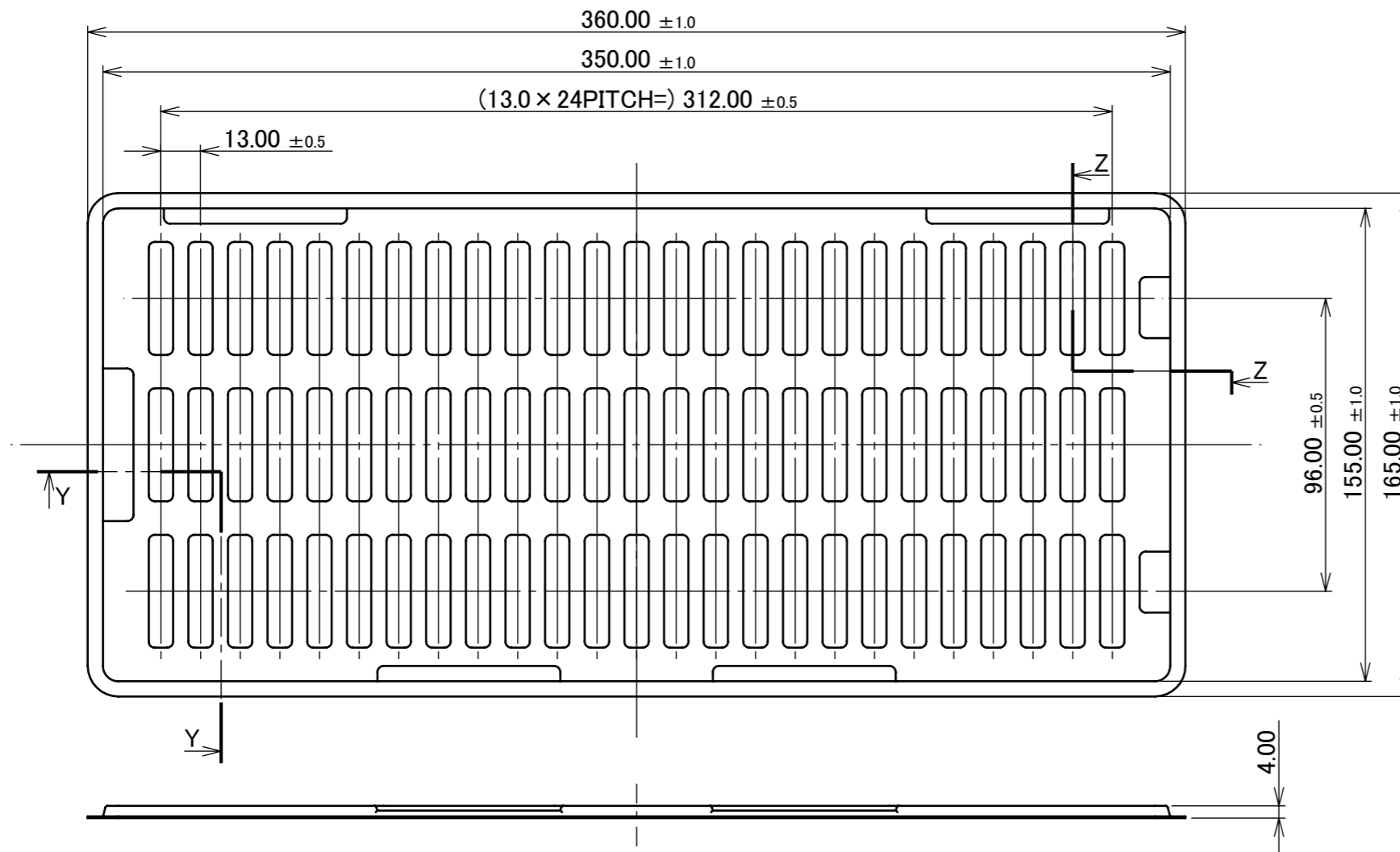
PART No.	POS.	QTY. PER DITCH (PIECE / DITCH)	QTY. PER TRAY (PIECES / TRAY)	QTY. PER SHIPPING CARTON (TRAYS / SHIPPING CARTON)	QTY. PER PACKING CARTON (PIECES / PACKING CARTON)	PACKING STANDARD
20438-030T-*1	30	1	100 PIECES / TRAY	20 TRAYS / SHIPPING CARTON (2000 PIECES / SHIPPING CARTON)	8000 PIECES / PACKING CARTON (4 SHIPPING CARTONS / PACKING CARTON)	300-584
20438-040T-*1	40					



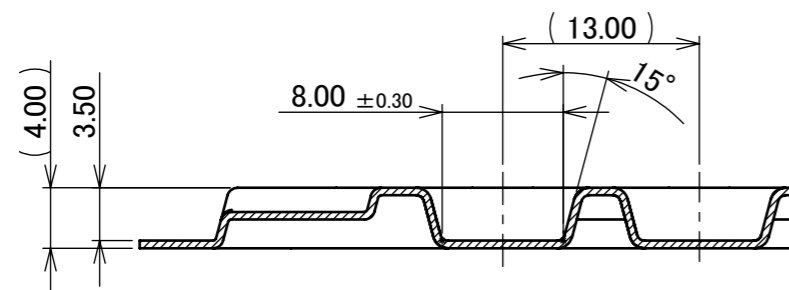
4	TRAY	PS	ANTI-STATIC TYPE
NO.	DISCRIPTION	MATERIAL	FINISH , REMARKS

ANGLE	±2°	6 OVER 30 MAX.	±0.3	PROJECTION ⊕	SERIES No. R5	CUSTOMER COPY		
6 MAX.	±0.2	30 OVER 120 MAX.	±0.5					
GENERAL TOLERANCE.				TITLE		SCALE	I-PEX	
DWG.	DATE			FPL™ II PLUG HOUSING ASSEMBLY		1:2		
CHK.						UNIT		
APP.				DWG. No. 20438		mm		
						SIZE	SHEET	REV.
						A3	2/3	13

PART No.	POS.	QTY. PER DITCH (PIECE / DITCH)	QTY. PER TRAY (PIECES / TRAY)	QTY. PER SHIPPING CARTON (TRAYS / SHIPPING CARTON)	QTY. PER PACKING CARTON (PIECES / PACKING CARTON)	PACKING STANDARD
20438-050T-*1	50	1	75 PIECES / TRAY	20 TRAYS / SHIPPING CARTON (1500 PIECES / SHIPPING CARTON)	6000 PIECES / PACKING CARTON (4 SHIPPING CARTONS / PACKING CARTON)	300-584



SECT. Z-Z
(S = 2/1)



SECT. Y-Y
(S = 2/1)

NO.	DISCRIPTION	MATERIAL	FINISH , REMARKS
5	TRAY	PS	ANTI-STATIC TYPE

GENERAL TOLERANCE.				PROJECTION	SERIES No.	CUSTOMER COPY		
ANGLE	±2°	6 OVER 30 MAX.	±0.3		R5	I-PEX		
6 MAX.	±0.2	30 OVER 120 MAX.	±0.5					
DWG.	DATE			TITLE		SCALE	I-PEX	
CHK.				FPL™ II PLUG HOUSING ASSEMBLY		1:2		
APP.				DWG. No.		UNIT		
				20438		mm		
						SIZE	SHEET	REV.
						A3	3/3	13