



Halogen Free



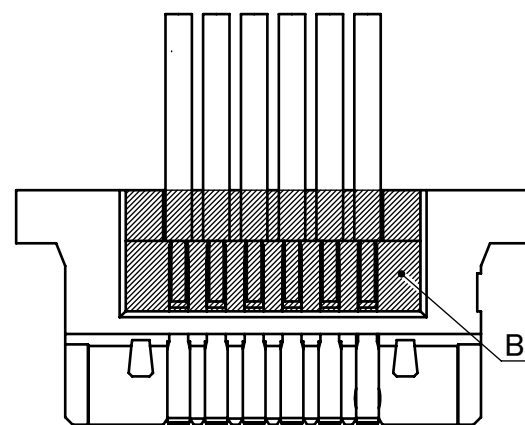
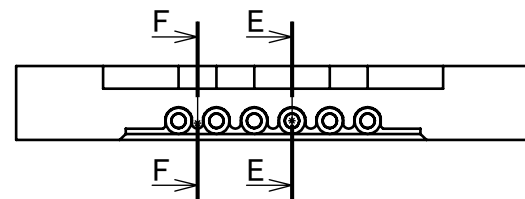
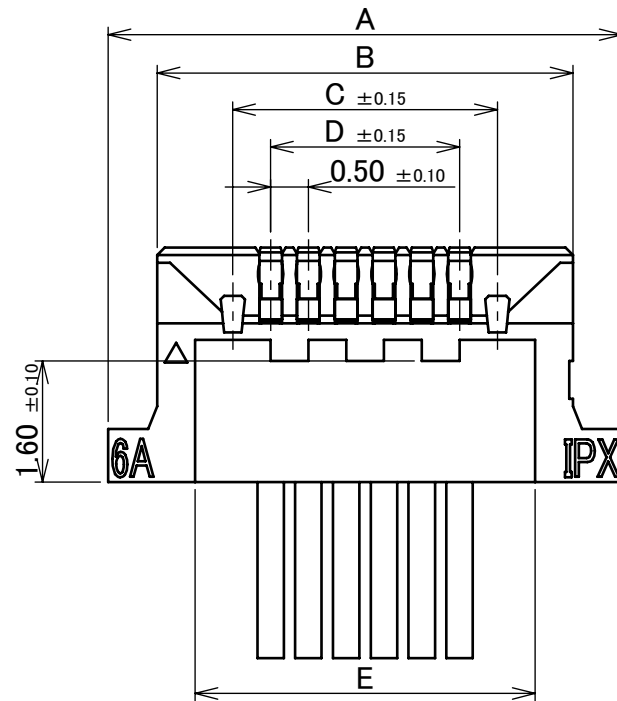
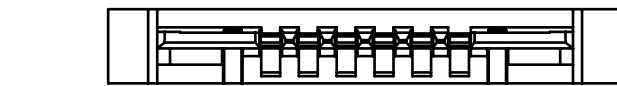
RoHS Compliant



VISIT OUR WEBSITE FOR LATEST VERSIONS OF INSTRUCTION MANUAL NO. HIM-14010 TO HANDLE THE PRODUCT PROPERLY AND SAFELY.

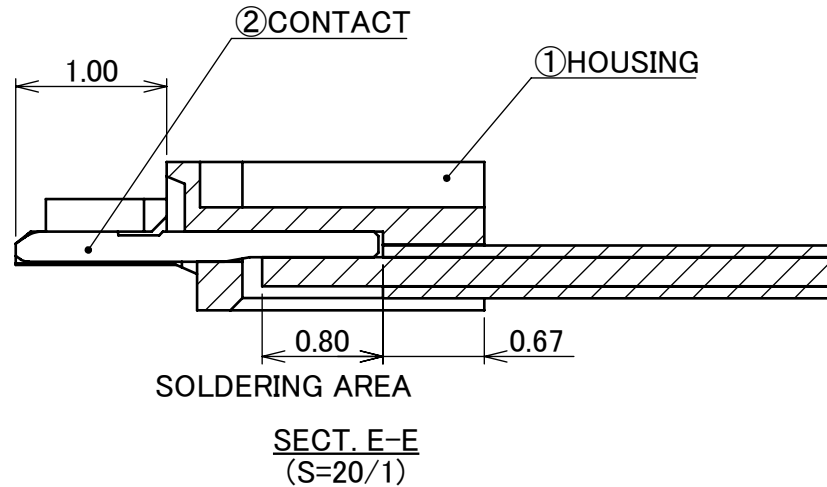
PART No.	POS.	A	B	C	D	E
20598-006T-02	6	6.80	5.50	3.50	2.50	4.50
20598-008T-02	8	7.80	6.50	4.50	3.50	5.50
20598-010T-02	10	8.80	7.50	5.50	4.50	6.50
◆20598-020T-02	20	13.80	12.50	10.50	9.50	11.50

◆MARK MEANS NOT AVAILABLE



BONDING AREA

0.435

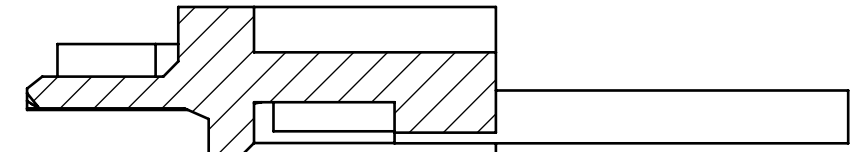


SOLDERING AREA

SECT. E-E (S=20/1)



RECEPTACLE ACTUATOR OPEN (MATING DIAGRAM)



BONDING LIMIT CRITERIA SEE NOTES. 2

SECT. F-F (S=20/1)



RECEPTACLE ACTUATOR CLOSE (MATING DIAGRAM)

- NOTES.
 1. DO NOT PULL THE CABLE WHEN UN-MATING CONNECTORS
 2. BONDING MUST NOT EXCEED THE LIMIT CRITERIA

TABLE. 1

PART NO.	FINISH
20598-0**T-02	CONTACT AREA : Au 0.1 μm MIN. OVER Ni 1.0 μm MIN. SOLDERING AREA : Au 0.03 μm MIN. OVER Ni 1.0 μm MIN.

NO.	DISCRIPTION	MATERIAL	FINISH , REMARKS
2	CONTACT	PHOSPHOR BRONZE	SEE TABLE. 1
1	HOUSING	LCP	UL94V-0, BLACK

REV.	ECN	BY	DATE	APP.	ANGLE	PROJECTION	SERIES No.	CUSTOMER COPY
4	Z240625	W.L	2024/06/14	M.T	±2° 6 OVER 30 MAX. ±0.3	⊕	R2	SCALE 10:1 UNIT mm SHEET 1/4 REV. 4
3	Z191358	R.F	2019/10/08	H.I	6 MAX. ±0.2 30 OVER 120 MAX. ±0.5	⊕	R2	
2	Z181301	K.T	2018/10/03	Y.S	GENERAL TOLERANCE.	⊕	R2	
1	Z170516	Y.O	2017/05/02	TAK	DWG. Y.Fukumoto DATE 2015/04/07	⊕	R2	
0	Z150395	Y.F	2015/04/07	CHK. K.Narita		⊕	R2	
REV.	ECN	BY	DATE	APP.	APP. T.Takano	DWG. No. 20598		

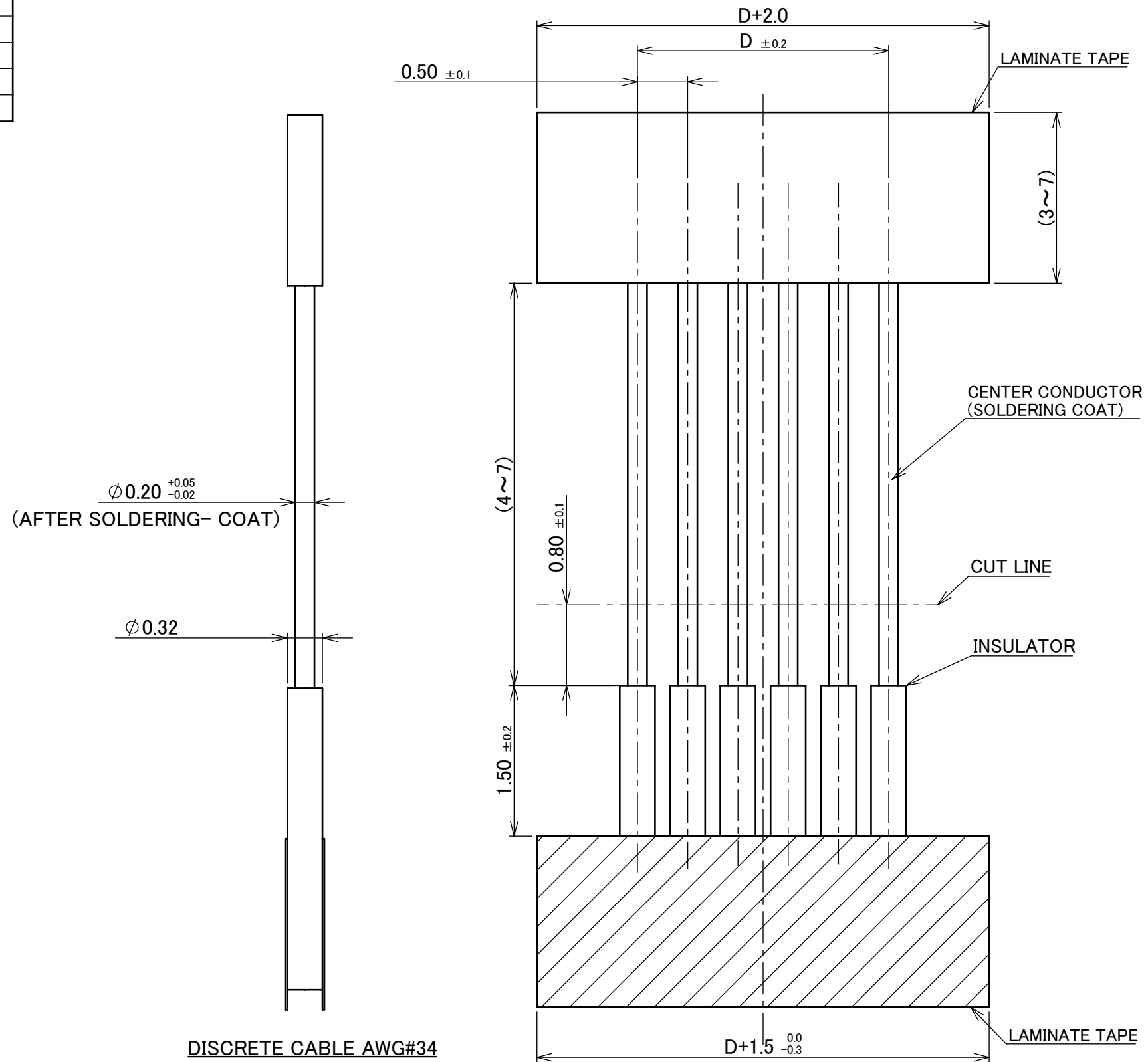
ITEMS	SPECIFICATION
APPLICABLE CABLE	DISCRETE : AWG#34
RATING VOLTAGE	50V AC (PER CONTACT)
RATING AMPERAGE	0.7A DC [AWG#34] (PER CONTACT)
OPERATING TEMPERATURE	233~358K(-40°C~85°C)
OPERATING HUMIDITY	80% MAX.
CONTACT RESISTANCE	INITIAL : 40mohm MAX. / AFTER TEST : \triangleleft 20mohm MAX.
INSULATION RESISTANCE	INITIAL : 1000Mohm MIN. / AFTER TEST : 500Mohm MIN.
DIELECTRIC WITHSTANDING VOLTAGE	AC200V 1min
DURABILITY	20TH CYCLES
ACTUATOR LOCKING FORCE (INITIAL / 20TH CYCLES)	INITIAL/ 20TH CYCLES : 0.6N(61gf) \times (n + 2) MAX.
ACTUATOR UNLOCKING FORCE (INITIAL / 20TH CYCLES)	INITIAL/ 20TH CYCLES : 0.05N(5gf) \times (n + 2) MIN.
PLUG RETENTION FORCE (INITIAL / AFTER TEST)	INITIAL : 0.15N(15gf) \times n + 2.0N MIN. / AFTER TEST : 0.15N(15gf) \times n + 1.0N MIN.
PRODUCT SPECIFICATION	PRS-1880
TEST REPORT	TR-13103
PACKING STANDARD	PST-14006
INSTRUCTION MANUAL	HIM-14010
ASSEMBLY MANUAL	ASM-12002
APPEARANCE CRITERIA No.	QLS-A***

※ "n" IS THE NUMBER OF PIN

ANGLE	$\pm 2^\circ$	6 OVER 30 MAX.	± 0.3	PROJECTION 	SERIES No. R2	CUSTOMER COPY		
6 MAX.	± 0.2	30 OVER 120 MAX.	± 0.5			SCALE -	I-PEX	
GENERAL TOLERANCE.				TITLE DW-5 PLUG CABLE ASSEMBLY	UNIT mm			
DWG.	DATE			DWG. No. 20598	SIZE A3	SHEET 2/4		REV. 4
CHK.								
APP.								

PART No.	POS.	D
20598-006T-02	6	2.50
20598-008T-02	8	3.50
20598-010T-02	10	4.50
◆20598-020T-02	20	9.50

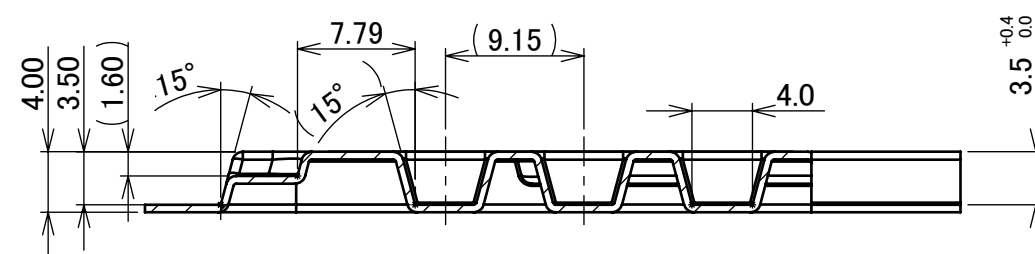
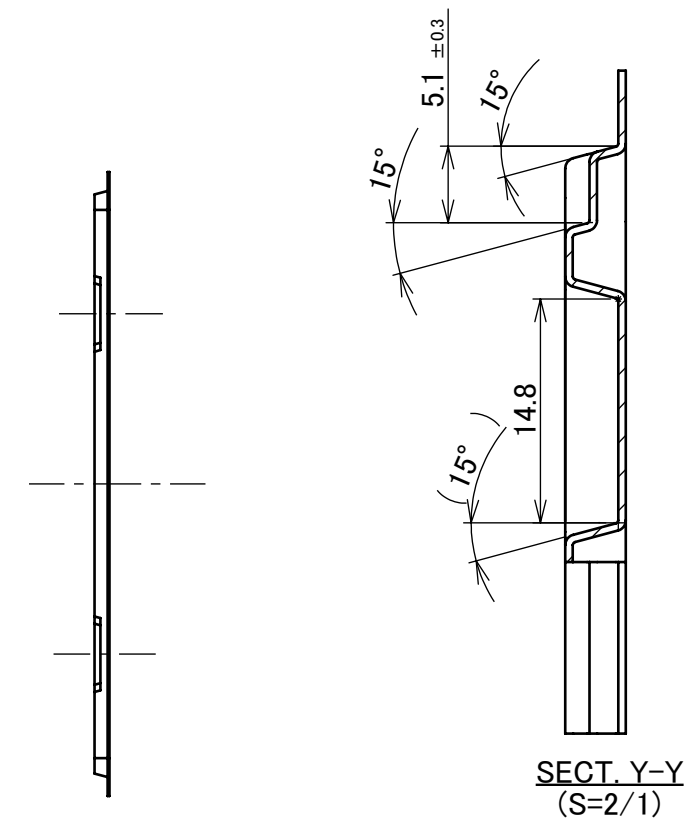
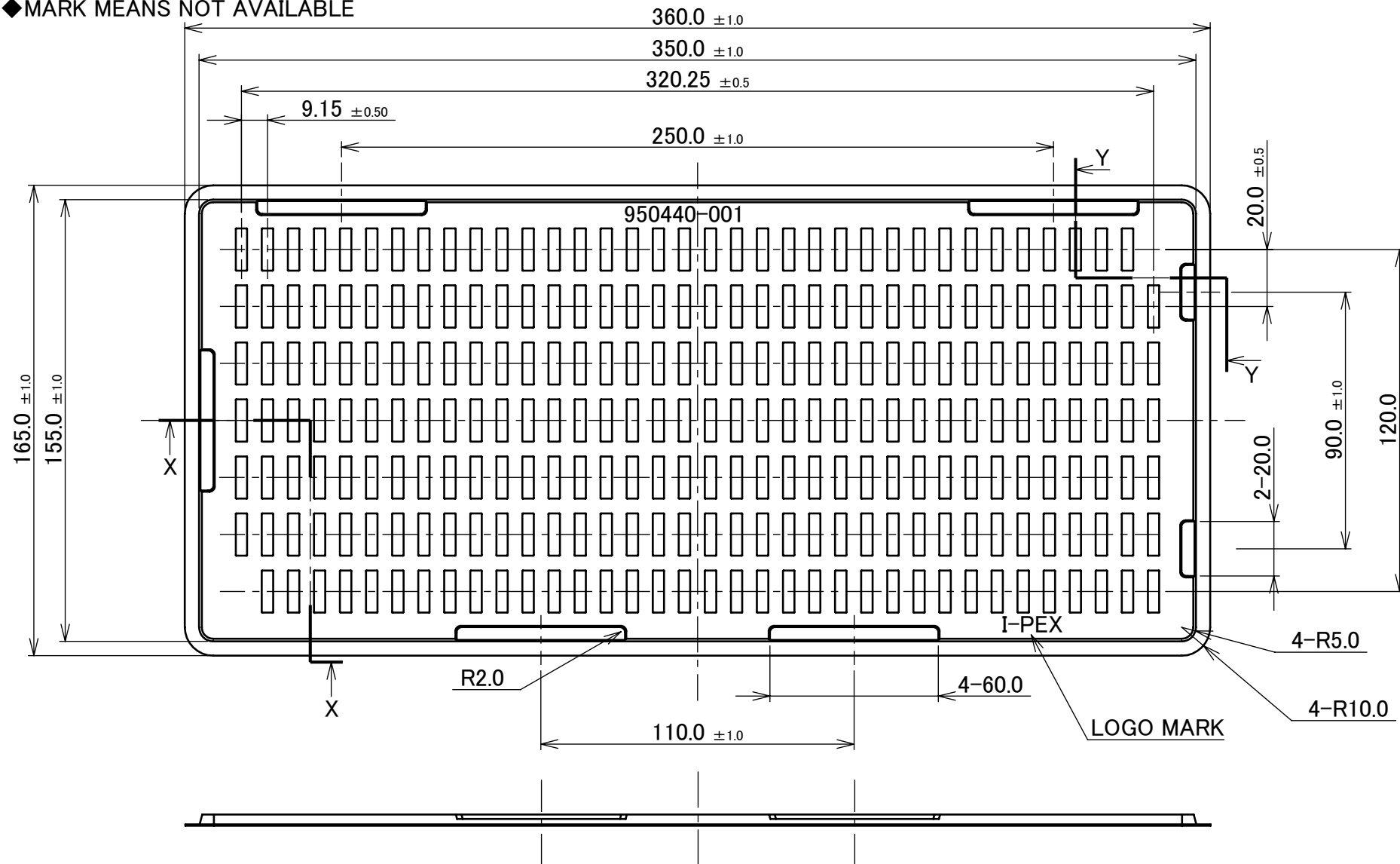
◆MARK MEANS NOT AVAILABLE



ANGLE	$\pm 2^\circ$	6 OVER 30 MAX.	± 0.3	PROJECTION ①	SERIES No. R2	CUSTOMER COPY		
6 MAX.	± 0.2	30 OVER 120 MAX.	± 0.5					
GENERAL TOLERANCE.				TITLE DW-5 PLUG CABLE ASSEMBLY	SCALE 20:1	UNIT I-PEX		
DWG.	DATE							
CHK.								
APP.								
				DWG. No.	20598	SIZE A3	SHEET 3/4	REV. 4

PART No.	QTY. IN DITCH (PIECES / DITCH)	QTY. IN TRAY (PIECES / TRAY)	QTY. PER SHIPPING CARTON (TRAYS / CARTON)	QTY. PER PACKING CARTON (TRAYS / CARTON)
20598-006T-02	1	250	20 / CARTON = 5000	20000 (4BOXES)
20598-008T-02				
20598-010T-02				
◆20598-020T-02				

◆MARK MEANS NOT AVAILABLE



SECT. X-X
(S=2/1)

NOTES.

3. THE TRAY IS MADE BY VACUUM MALE TYPE MOLD.
4. UNLESS OTHERWISE SPECIFIED, USE DRAFT ANGLE 5° MAX.
5. UNLESS OTHERWISE SPECIFIED, USE R0.2 MAX.
6. THE DIMENSIONS ON THE DRAFT ANGLE PART : THE POINT OF INTERSECTION.
7. DRAFT ANGLE IS OMITTED ON THE FRONT VIEW.

NO.	DISCRIPTION	MATERIAL	FINISH , REMARKS
3	TRAY	PS t=0.5	ANTI-STATIC TYPE

ANGLE	±2°	6 OVER 30 MAX.	±0.3	PROJECTION ⊕	SERIES No. R2	CUSTOMER COPY			
6 MAX.	±0.2	30 OVER 120 MAX.	±0.5			TITLE DW-5 PLUG CABLE ASSEMBLY	SCALE -	I-PEX	
GENERAL TOLERANCE.				DWG. No.	UNIT mm	SIZE A3	SHEET 4/4		
DWG.	DATE			20598	REV.	4			
CHK.									
APP.									