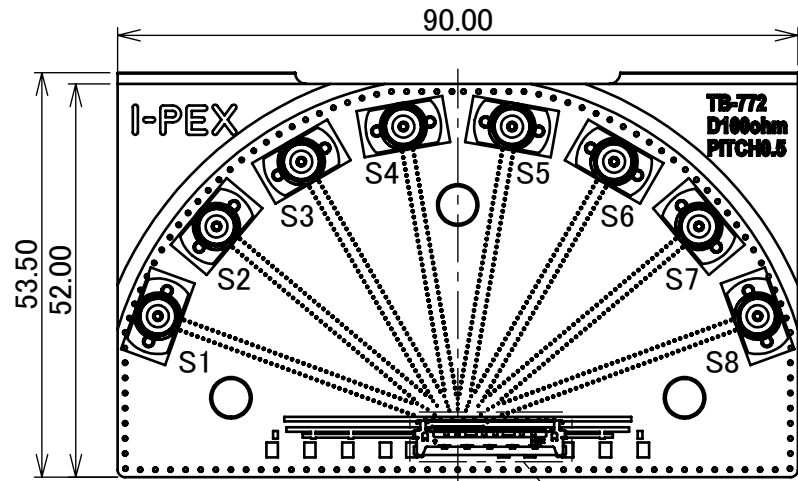
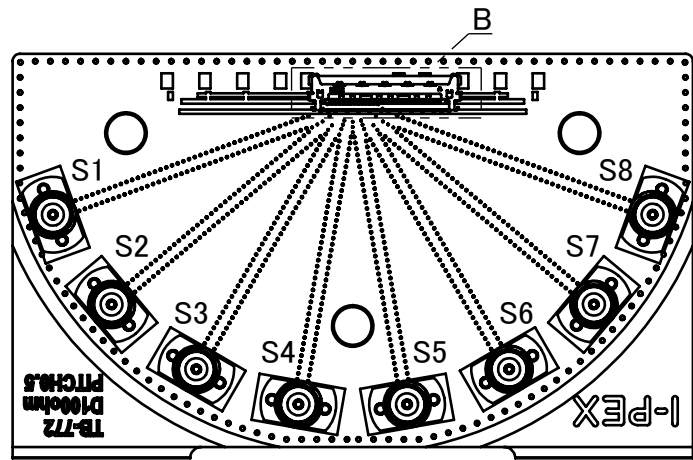


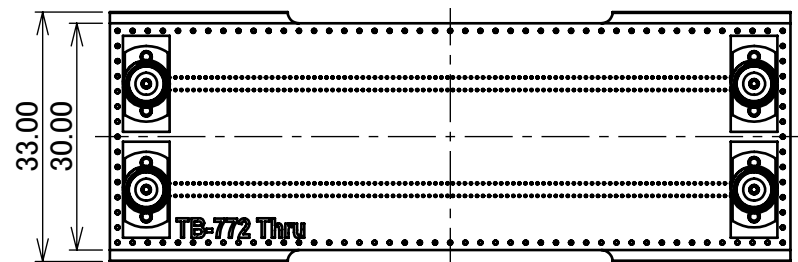
PART NO.	STRUCTURE
91579-0**B-001	MAIN BOARD A ASSEMBLY: 1PC MAIN BOARD B ASSEMBLY: 1PC 2xTHRU BOARD ASSEMBLY: 1PC



MAIN BOARD A

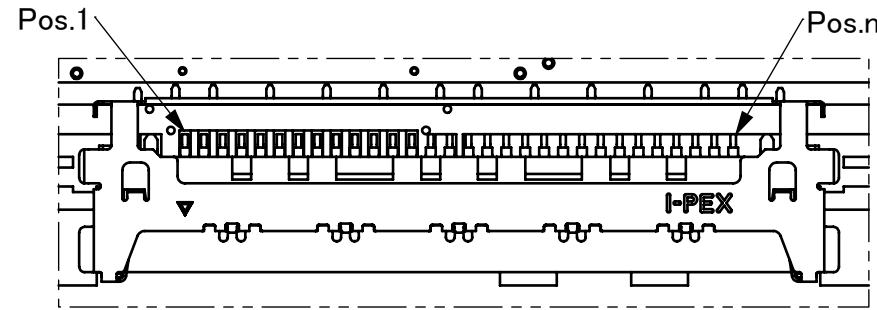


MAIN BOARD B

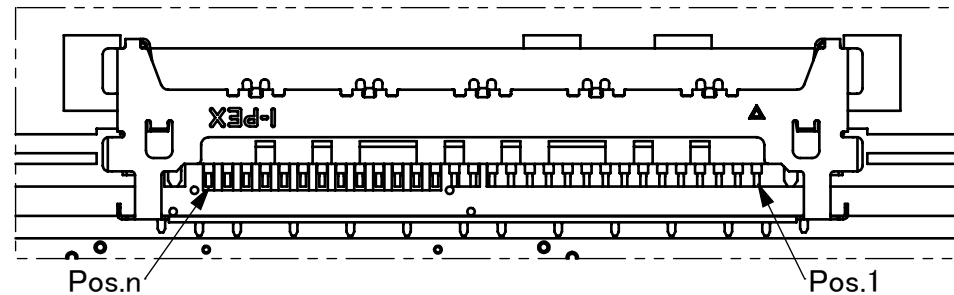


2xTHRU BOARD

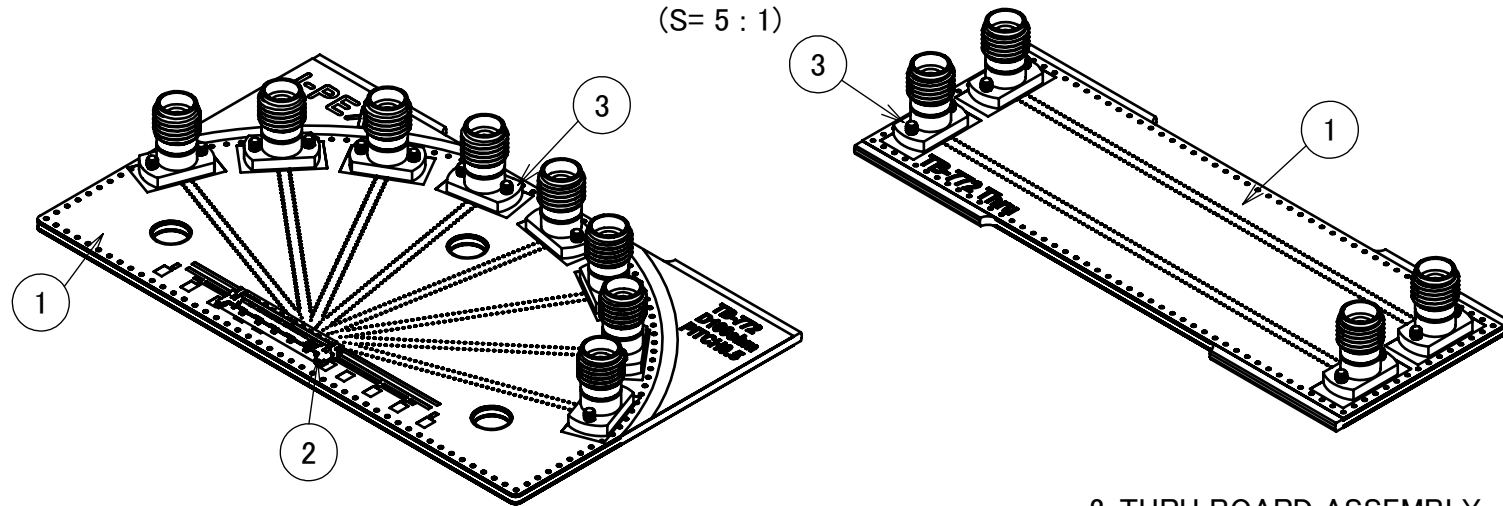
91579-0 ** B-001
Pos.20, 30, 40



DETAIL A
(S= 5 : 1)



DETAIL B
(S= 5 : 1)



MAIN BOARD A/B ASSEMBLY

2xTHRU BOARD ASSEMBLY

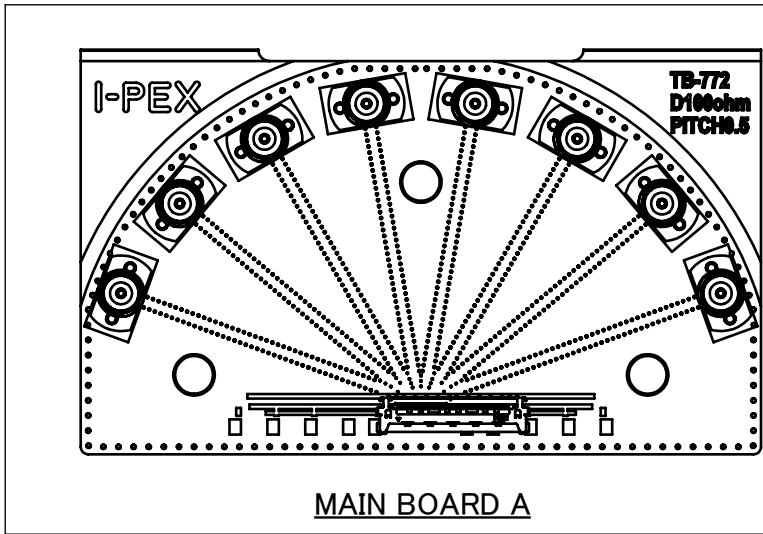
MAIN BOARD A	
PIN POS.	ASSIGNMENT
1	GND
2	S1
3	S2
4	GND
5	S3
6	S4
7	GND
8	S5
9	S6
10	GND
11	S7
12	S8
13	GND

MAIN BOARD B	
PIN POS.	ASSIGNMENT
N	GND
N-1	S1
N-2	S2
N-3	GND
N-4	S3
N-5	S4
N-6	GND
N-7	S5
N-8	S6
N-9	GND
N-10	S7
N-11	S8
N-12	GND

NO.	DESCRIPTION	PART NO.	QTY	REMARKS
3	2.92mm CONNECTOR	50104-J001	20	JACK
2	CONNECTOR	20849-0**E-01	2	CABLINÉ-VS II RECEPTACLE
1	TEST BOARD	TB-772	1	TEST BOARD THICKNESS: 1.60mm

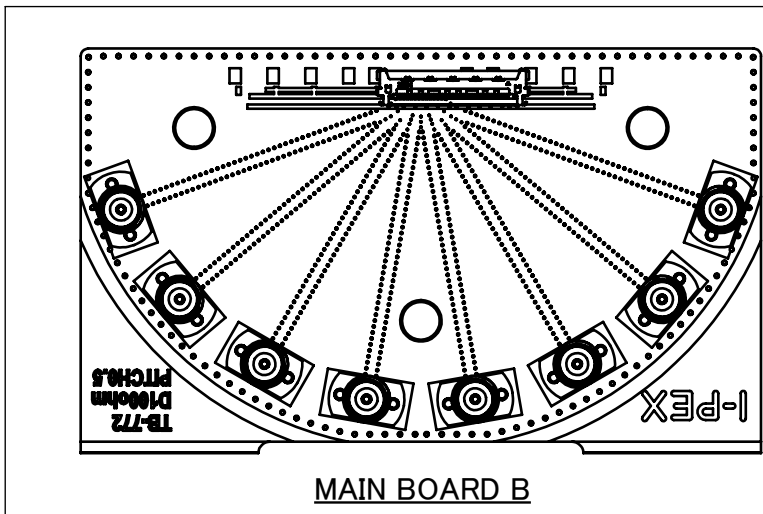
- NOTES.
- FOR DETAILED INFORMATION ON THE STRUCTURE OF TEST BOARD TB-772, REFER TO REPORT #IER-001-10705.
 - CHARACTERISTIC IMPEDANCE: $50 \Omega \pm 10\%$ (SINGLE-ENDED), $T_r=17.5$ ps (10% - 90%)
 - APPLICABLE PLUG CONNECTOR: CABLINE-VS II PLUG (P/N: 20846-0**T-0#)
 - MAXIMUM MEASUREMENT FREQUENCY: 40 GHz
 - OTHER PIN CONFIGURATIONS CAN BE PROVIDED UPON REQUEST.

REVISION RECORD				ANGLE $\pm 2^\circ$ 6 OVER 30 MAX. ± 0.3 6 MAX. ± 0.2 30 OVER 120 MAX. ± 0.5	PROJECTION 	SERIES No. R2R2R0	CUSTOMER COPY		
0	Z241148	K.Ta	2024/08/28	GENERAL TOLERANCE. DWG. K.Tanabe DATE 2024/08/28 CHK. M.Nakamura APP. T.Masunaga	TITLE CABLINE® -VS II SI TEST BOARD ASSEMBLY	SCALE 1:1 UNIT mm			
REV.	ECN	BY	DATE	APP.	DWG. No.	91579	SIZE A3	SHEET 1/2	REV. 0

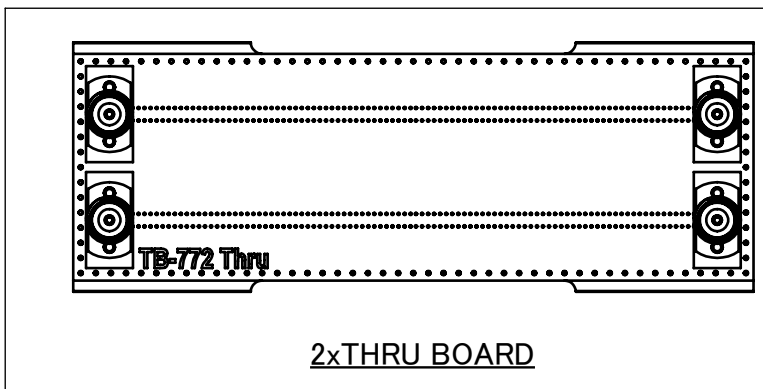


<LARGE BAG>
REUSABLE PLASTIC BAG

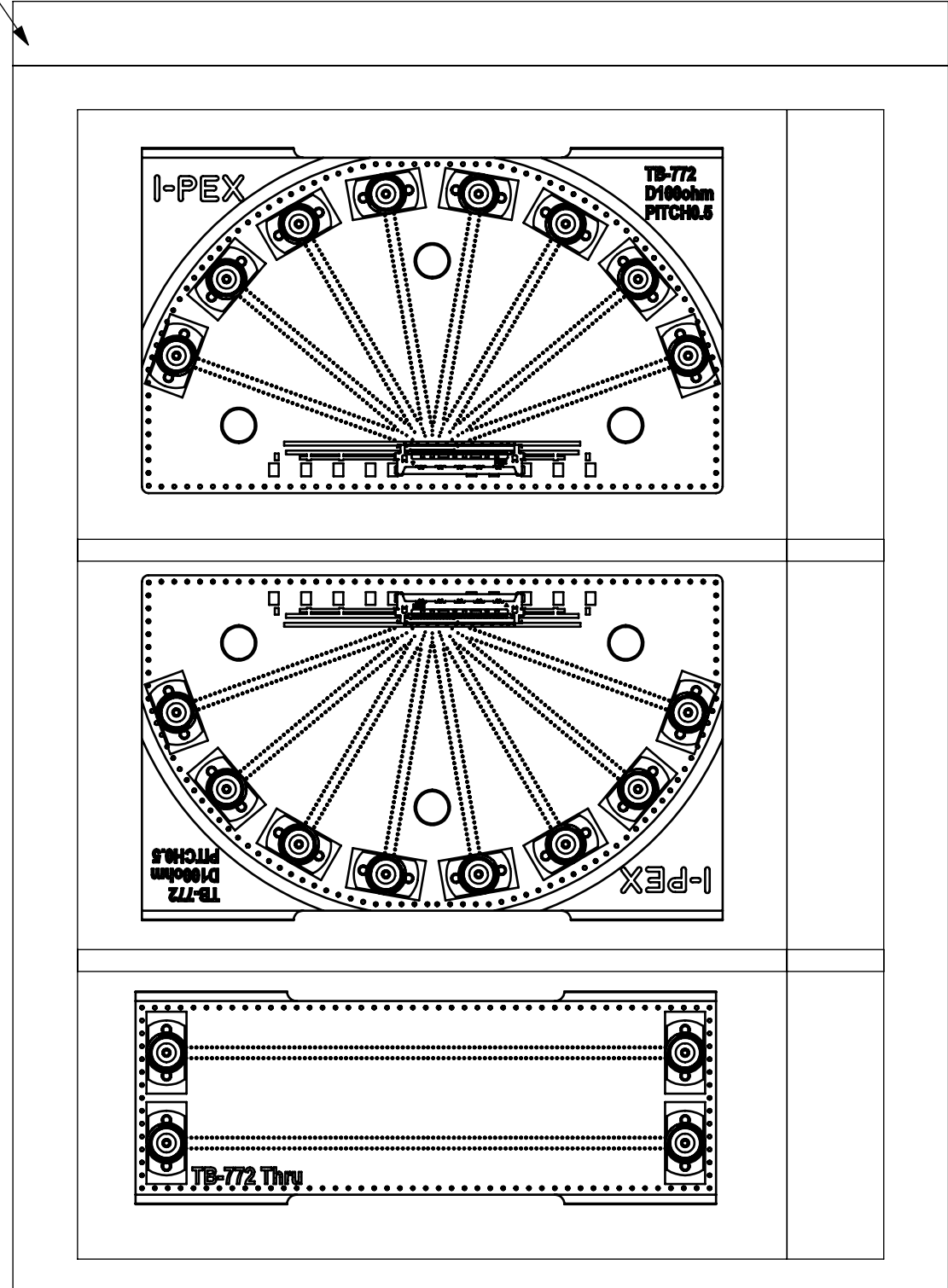
<SMALL BAG>
REUSABLE PLASTIC BAG



<SMALL BAG>
REUSABLE PLASTIC BAG



<SMALL BAG>
REUSABLE PLASTIC BAG



PACKING STYLE

ANGLE	±2°	6 OVER 30 MAX.	±0.3	PROJECTION ⊕	SERIES No. R2R2R0	CUSTOMER COPY			
	6 MAX.	±0.2	30 OVER 120 MAX.						±0.5
GENERAL TOLERANCE.					TITLE CABLINÉ® -VS II SI TEST BOARD ASSEMBLY	SCALE	I-PEX		
DWG.	DATE					1:1			
CHK.						UNIT			
APP.						mm			
					DWG. No.	SIZE	SHEET	REV.	
					91579	A3	2/2	0	