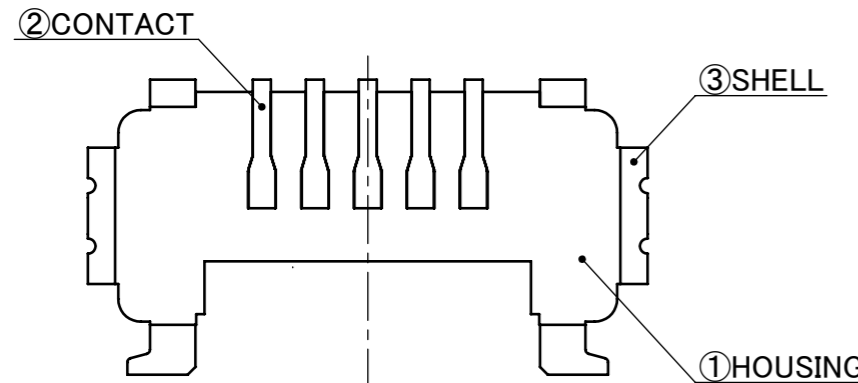
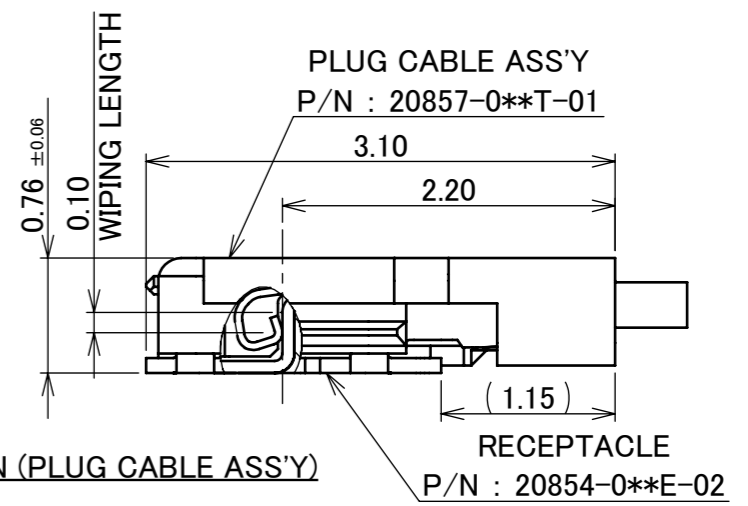
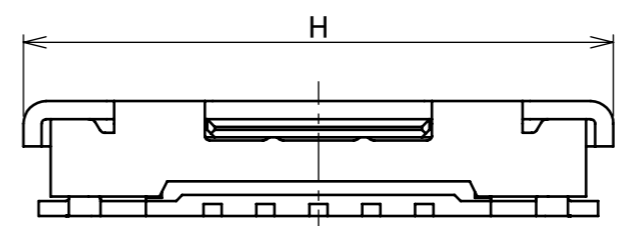
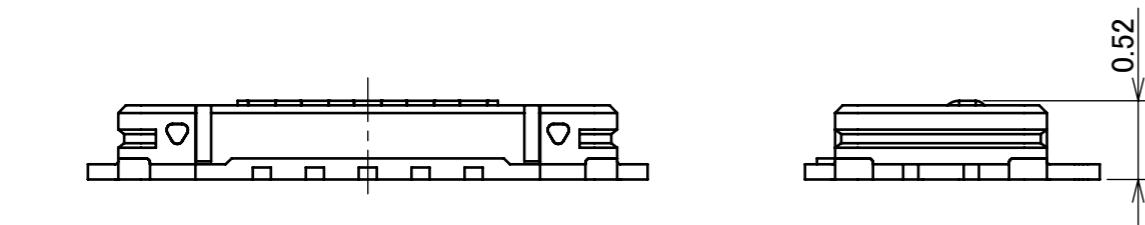
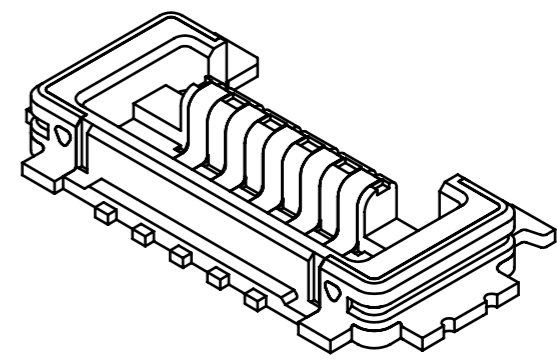
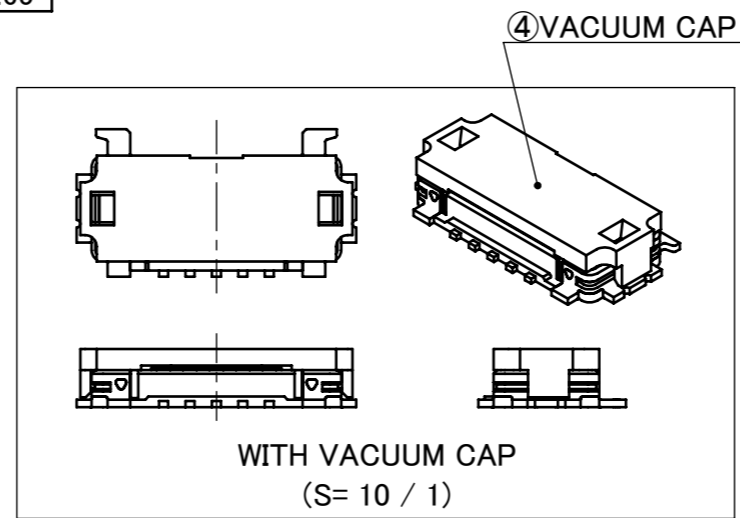
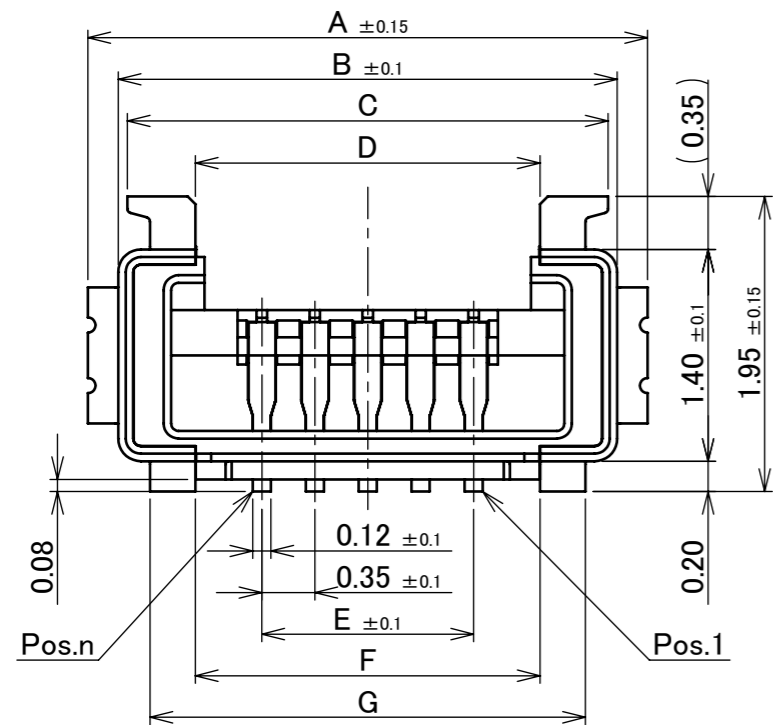
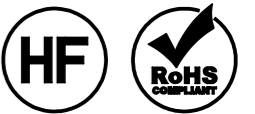


Recommended P/N 20854-0**E-02

PART NO.	Pos.	A	B	C	D	E	F	G	H	J
20854-005E-02	5	3.70	3.30	3.18	2.28	1.40	2.28	2.88	3.90	2.90
20854-010E-02	10	5.45	5.05	4.93	4.03	3.15	4.03	4.63	5.65	4.65



4	VACUUM CAP	LCP	UL94V-0, BLACK
3	SHELL	PHOSPHOR BRONZE	ALL OVER Ni 1.00 μm MIN. CONTACT PART: Au 0.01 μm MIN. SOLDERING PART: Au 0.01 μm MIN.
2	CONTACT	PHOSPHOR BRONZE	ALL OVER Ni 1.00 μm MIN. CONTACT PART: Au 0.05 μm MIN. SOLDERING PART: Au 0.03 μm MIN.
1	HOUSING	LCP	UL94V-0, BLACK
NO.	DESCRIPTION	MATERIAL	FINISH , REMARKS

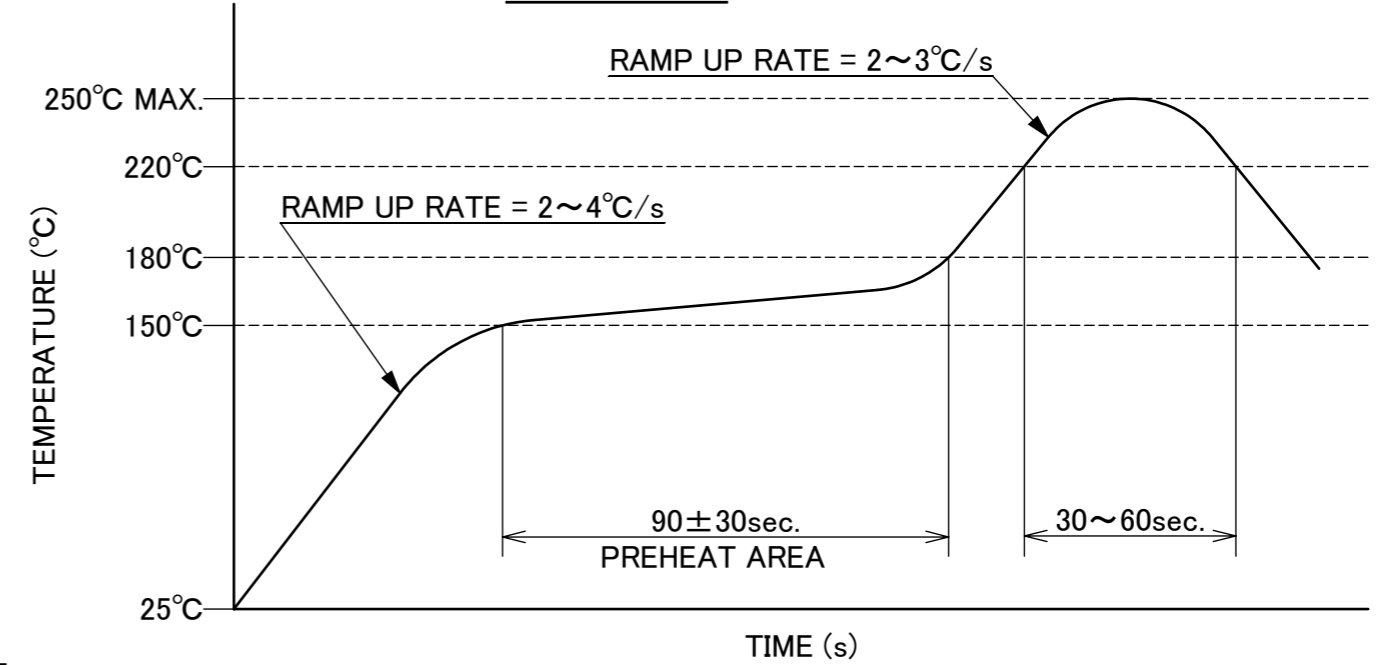
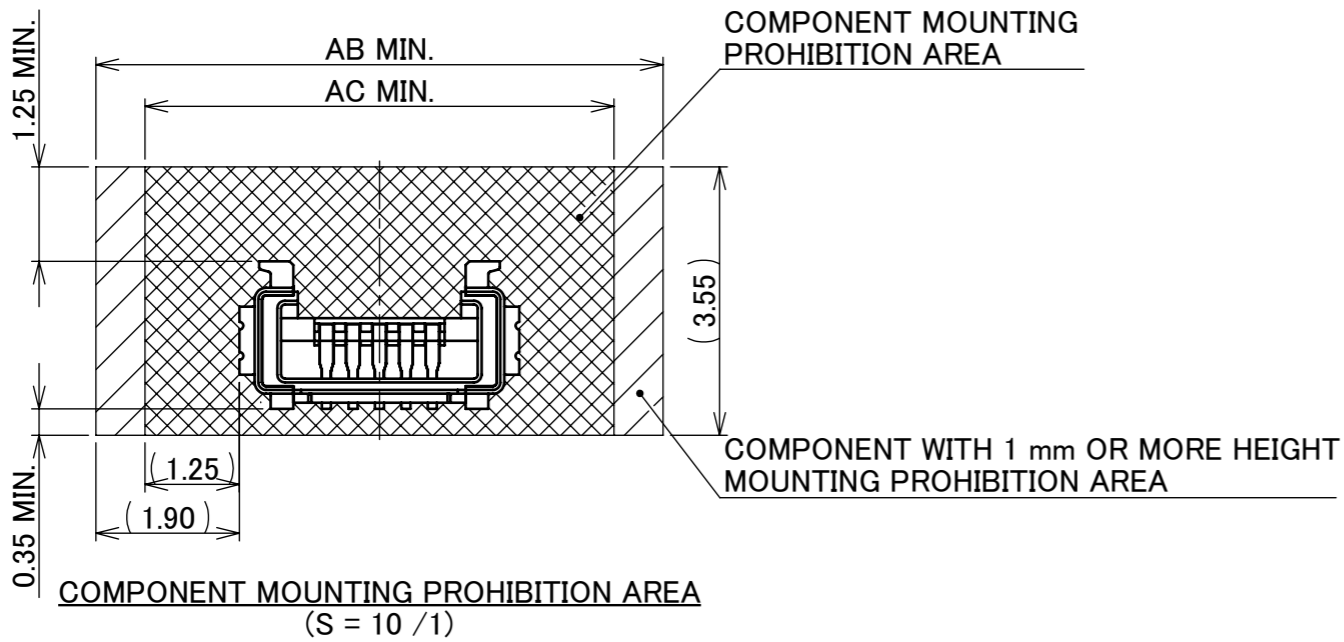
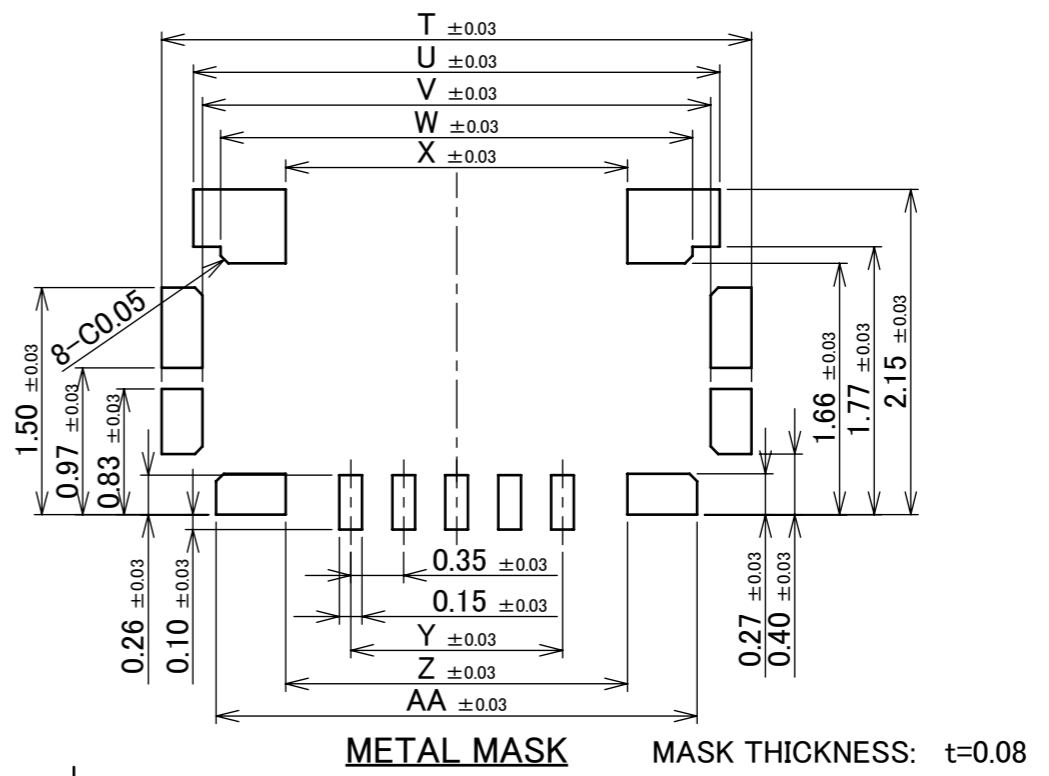
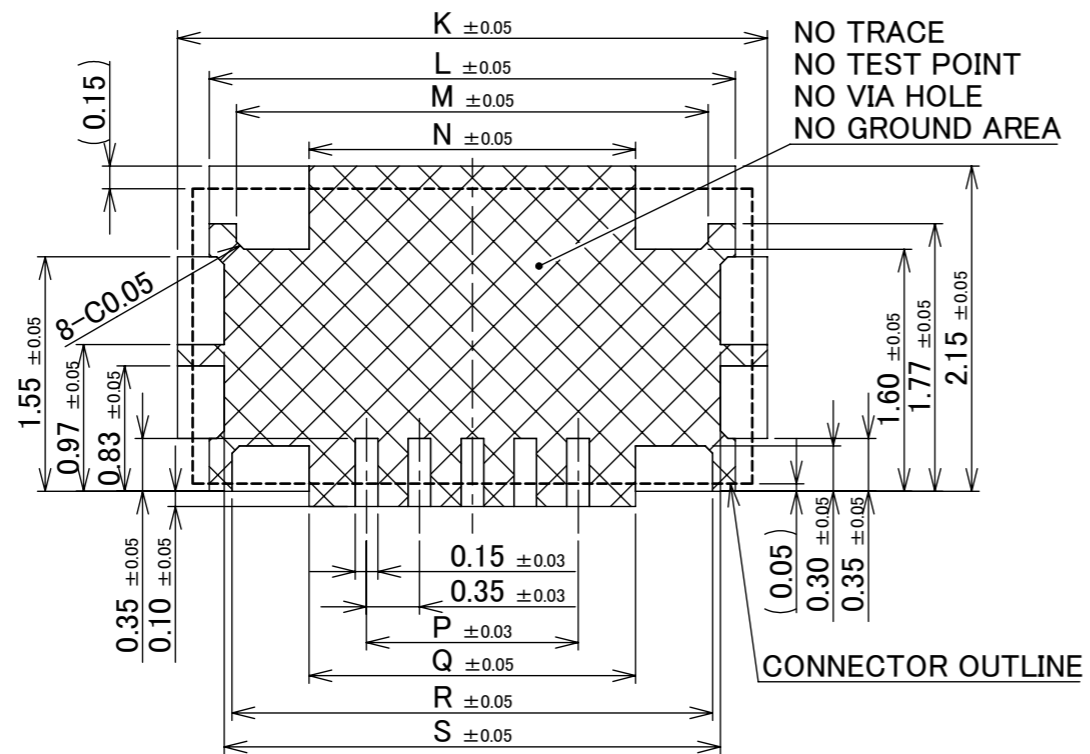
NOTE.
1. COPLANARITY: 0.08mm MAX.

5	Z210746	S.Y	2021/07/09	H.I	ANGLE	±2°	6 OVER 30 MAX.	±0.3	PROJECTION ⊕	SERIES No. R8	CUSTOMER COPY	
4	Z210452	S.Y	2021/04/28	H.I	6 MAX.	±0.2	30 OVER 120 MAX.	±0.5				
3	Z200309	Y.F	2020/03/13	T.Y	GENERAL TOLERANCE.			TITLE CABLINER [®] -UY RECEPTACLE	SCALE 20:1	UNIT mm	I-PEX	
2	Z200022	Y.F	2020/01/10	Y.S	DWG.	DATE						2018/12/03
1	Z190941	Y.F	2019/07/25	Y.S	S.Kawamura							
0	Z181542	S.K	2018/12/03	CHK.	K.Yotsutani							
REV.	ECN	BY	DATE	APP.	APP.	REVISION RECORD		DWG. No.	20854	SIZE A3	SHEET 1/4	REV. 5

ITEMS	SPECIFICATION
APPLICABLE CONNECTOR PART No.	20857-0**T-01 (PLUG CABLE ASS'Y)
APPLICABLE CABLE	MICRO COAX : AWG# 42 DISCRETE : AWG# 36
RATING VOLTAGE	60V AC (PER CONTACT)
RATING AMPERAGE (FOR CONTACT)	0.35 AC/DC [AWG#42] PER CONTACT 0.50 AC/DC [AWG#36] PER CONTACT
OPERATING TEMPERATURE	233~358K(-40°C~+85°C)
OPERATING HUMIDITY	85% MAX.(NON-CONDENSING)
CONTACT RESISTANCE	INITIAL : 700mohm MAX.(AWG#42) 275mohm MAX.(AWG#36) / AFTER TEST : Δ R 40mohm MAX.
GROUND CONTACT RESISTANCE	INITIAL : 60mohm MAX. / AFTER TEST : Δ R 40mohm MAX.
INSULATION RESISTANCE	INITIAL : 500Mohm MIN. / AFTER TEST : 100Mohm MIN.
DIELECTRIC WITHSTANDING VOLTAGE	AC200V 1min
DURABILITY	30 CYCLES
MATING FORCE (INITIAL / AFTER TEST)	5P : INITIAL: 30N MAX. / AFTER TEST: 30N MAX. 10P : INITIAL: 30N MAX. / AFTER TEST: 30N MAX.
UNMATING FORCE (INITIAL / AFTER TEST)	5P : INITIAL: 5N MIN. / AFTER TEST: 3N MIN. 10P : INITIAL: 5N MIN. / AFTER TEST: 3N MIN.
CABLE RETENTION FORCE	5P : 2.45N MIN. 10P : 4.90N MIN.
COPLANARITY	0.08 MAX.
PRODUCT SPECIFICATION	PRS-2634
TEST REPORT	TR-19084
PACKING STANDARD	PST-18040
INSTRUCTION MANUAL	HIM-18037
APPEARANCE CRITERIA No.	QLS-A***

ANGLE	$\pm 2^\circ$	6 OVER 30 MAX.	± 0.3	PROJECTION 	SERIES No. R8	CUSTOMER COPY		
	6 MAX.	± 0.2	30 OVER 120 MAX.					± 0.5
GENERAL TOLERANCE.				TITLE CABLIN [®] -UY RECEPTACLE	SCALE 	I-PEX		
DWG.	DATE							
CHK.								
APP.								
				DWG. No.	20854	SIZE A3	SHEET 2/4	REV. 5

PART NO.	Pos.	K	L	M	N	P	Q	R	S	T	U	V	W	X	Y	Z	AA	AB	AC
20854-005E-02	5	3.90	3.48	3.12	2.16	1.40	2.16	3.18	3.28	3.90	3.48	3.36	3.12	2.26	1.40	2.26	3.18	7.50	6.20
20854-010E-02	10	5.65	5.23	4.87	3.91	3.15	3.91	4.93	5.03	5.65	5.23	5.11	4.87	4.01	3.15	4.01	4.93	9.25	7.95

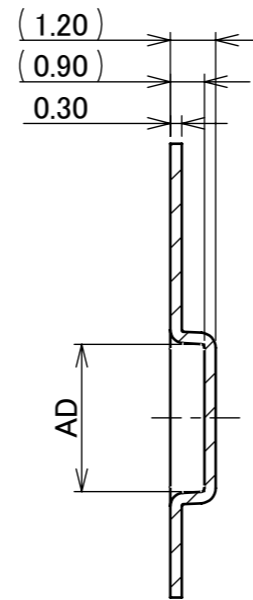
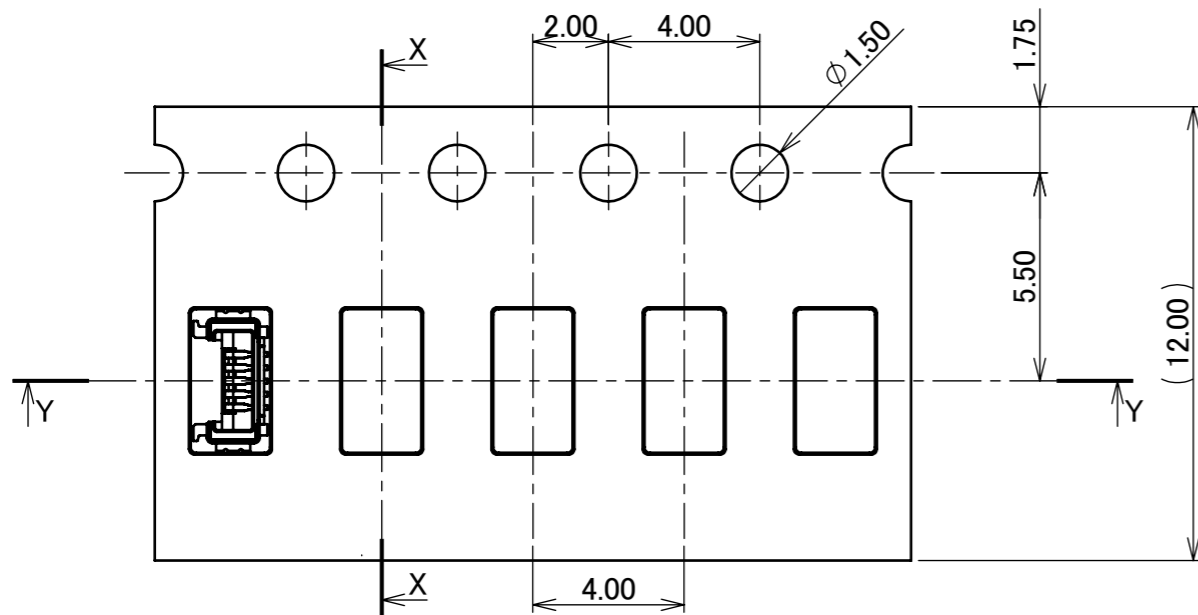
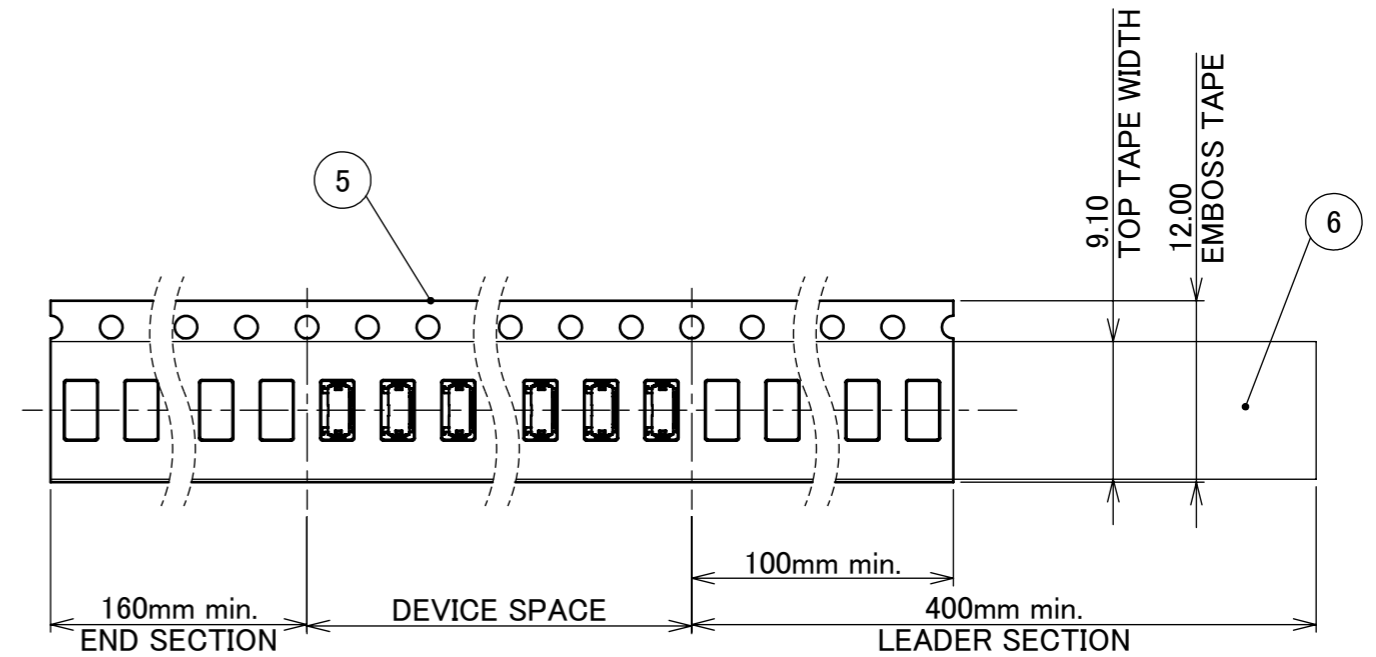
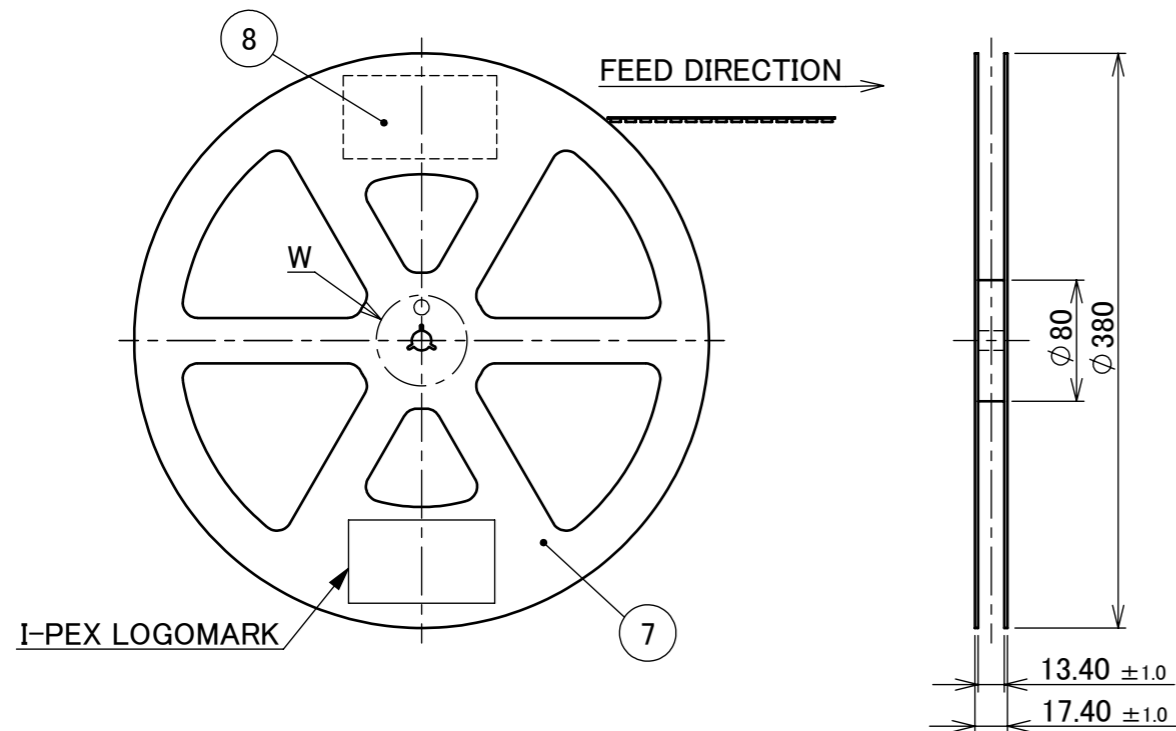


REFLOW TEMPERATURE PROFILE
SENJU METAL INDUSTRY CO., LTD. : M705-SHF(Sn96.5 Ag3.0 Cu0.5)

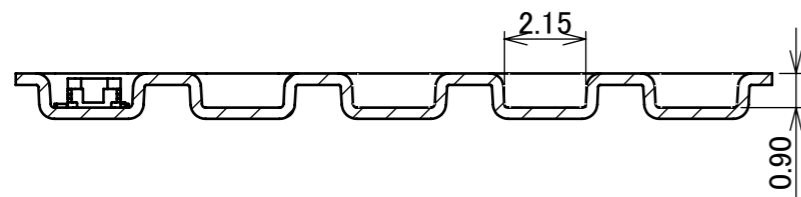
NOTE.
2. SOLDER RESIST SHALL BE APPLIED TO PREVENT SHORT CIRCUITS WHEN PLACING SIGNAL LINES ON GROUND AREA.

ANGLE	±2°	6 OVER 30 MAX.	±0.3	PROJECTION ⊕	SERIES No. R8	CUSTOMER COPY		
	6 MAX.	±0.2	30 OVER 120 MAX.			±0.5	SCALE 20:1	I-PEX
GENERAL TOLERANCE.				TITLE CABLIN® -UY RECEPTACLE		UNIT mm		
DWG.	DATE			DWG. No. 20854		SIZE A3	SHEET 3/4	REV. 5
CHK.								
APP.								

PART NO.	Pos.	AD	QTY. PRE EMOSS REEL (PIECES / REEL)	QTY. PRE PACKING CARTON (REEL / CARTON)
20854-005E-02	5	3.90	15,000 / REEL	9 / CARTON = 135,000
20854-010E-02	10	5.65	10,000 / REEL	9 / CARTON = 90,000



SECT. X-X



SECT. Y-Y

- NOTES.
- TAPING SPECIFICATION FOLLOWS JIS C 0806 (IEC 60286-3).
 - MAKE EMPTY SECTION OF LEADER AND END ON EACH END OF THE TAPE.
 - TOP TAPE SHALL NOT STICK OUT FROM EMOSS TAPE.
 - TOP TAPE SHALL NOT COVER FEED HOLE.

DESCRIPTION	NO.	MATERIAL	REMARK
PACKING LABEL	8	PS	
REEL	7	PET t=0.062 ANTI-STATIC TYPE	
TOP TAPE	6	PS t=0.30 ANTI-STATIC TYPE	
EMBOSS TAPE	5		

ANGLE	$\pm 2^\circ$	6 OVER 30 MAX.	± 0.3	PROJECTION	SERIES No.	CUSTOMER COPY			
6 MAX.	± 0.2	30 OVER 120 MAX.	± 0.5		R8	SCALE	I-PEX		
GENERAL TOLERANCE.						TITLE			
DWG.	DATE			CABLIN [®] -UY RECEPTACLE		UNIT			
CHK.						mm			
APP.				DWG. No. 20854		SIZE	SHEET	REV.	
						A3	4/4	5	