

Recommended P/N 20533-0**E

PART NO.	Pos.	A	B	C	D	E
20533-030E-**	30	11.20	7.50	8.00	10.11	1.60
20533-034E-**	34	12.20	8.50	8.00	11.11	2.10
20533-040E-**	40	13.70	10.00	10.00	12.61	1.85
20533-050E-**	50	16.20	12.50	12.00	15.11	2.10

20533-0**E-**
SEE TABLE.1
Pos.

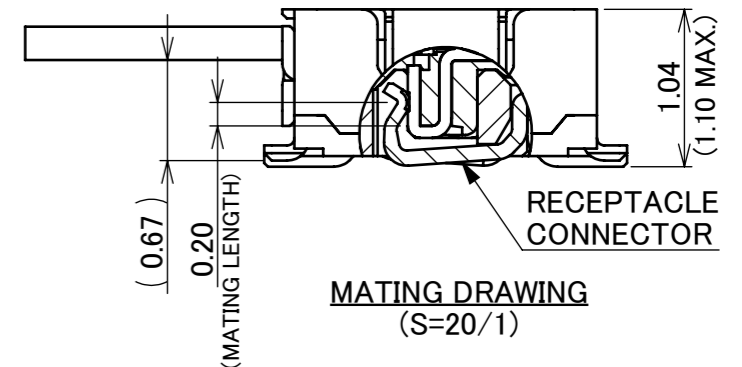
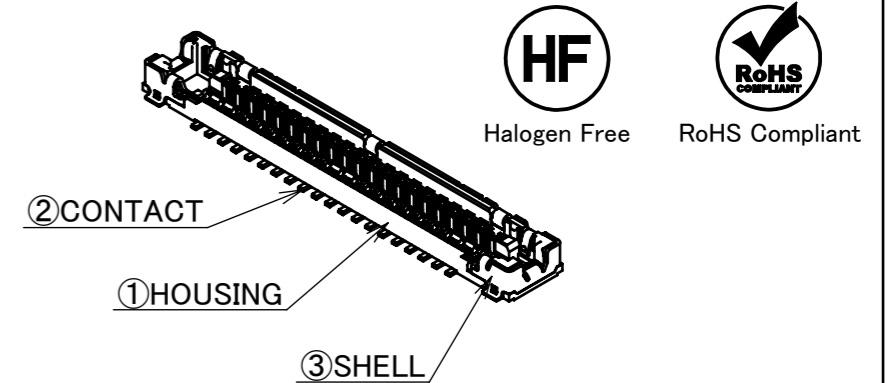
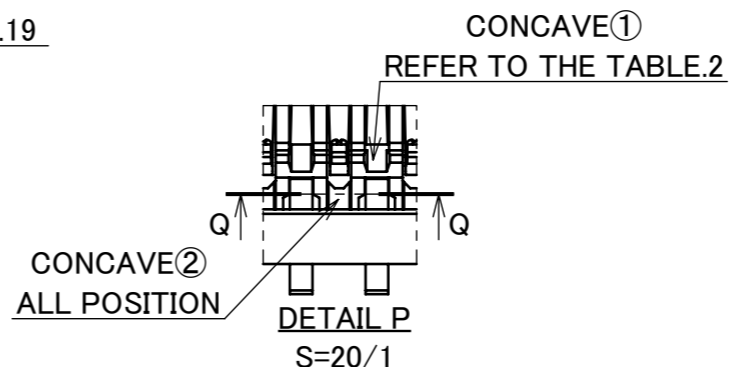
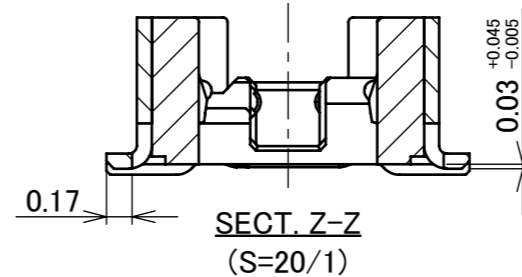
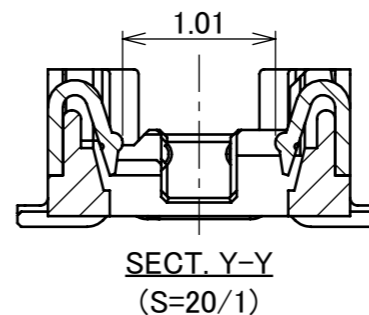
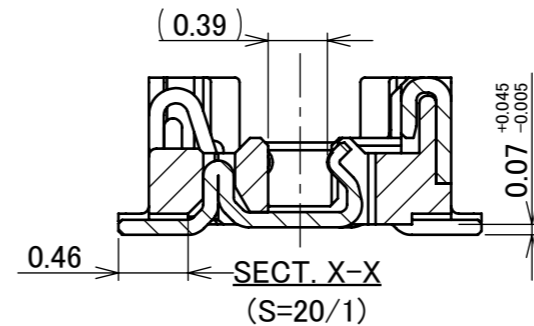
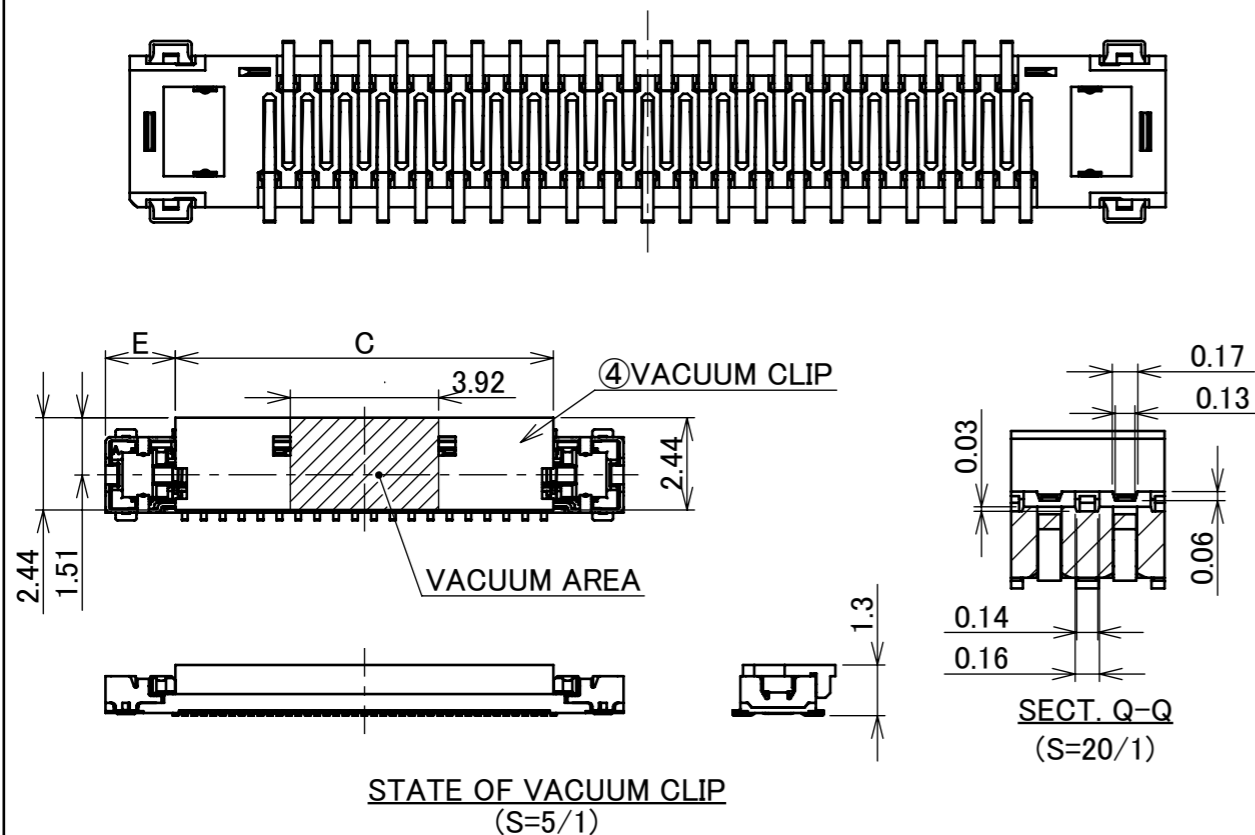
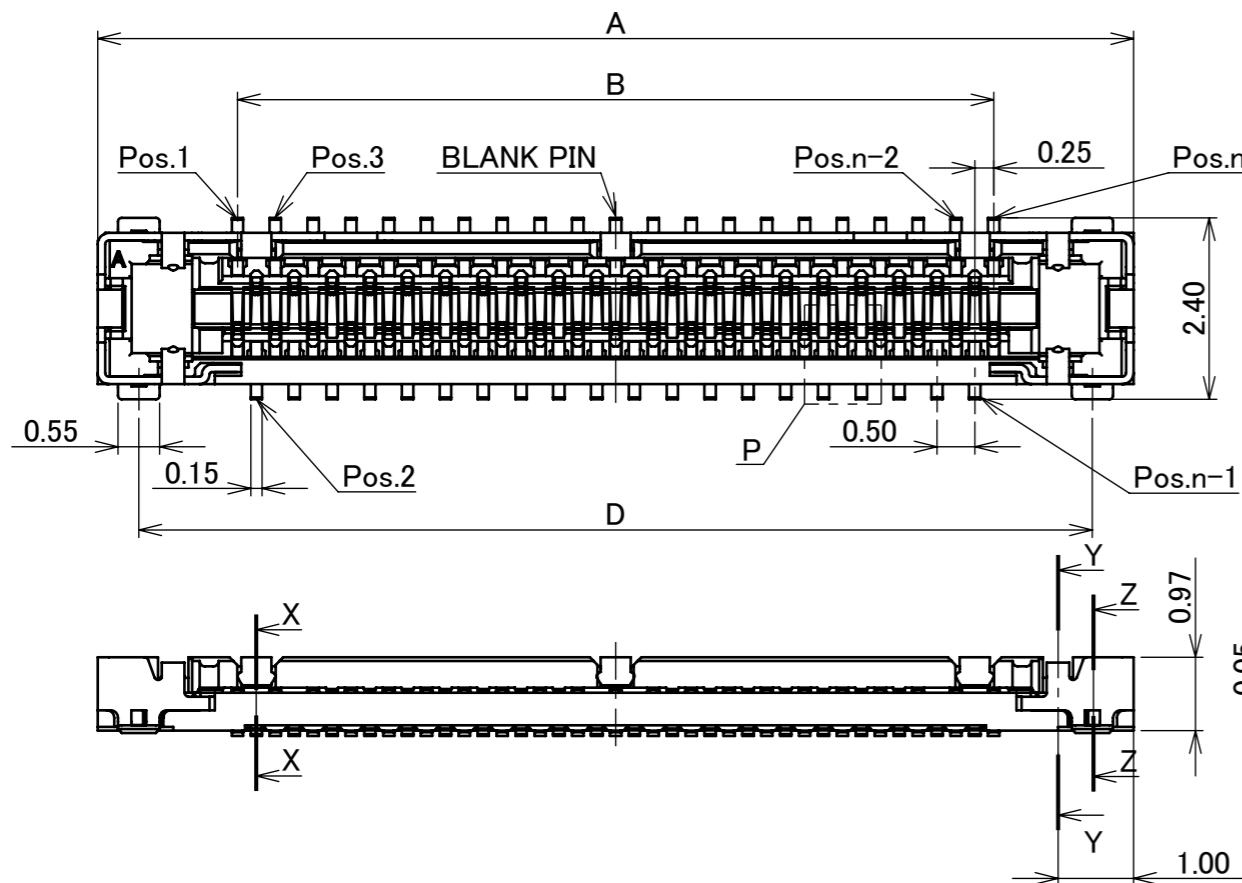


TABLE.2

POSITION OF CONCAVE①

30P	: 2, 6, 8, 12, BLANK PIN, 19, 23, 25, 29 pos. (9 POSITIONS)
34P	: 4, 8, 10, 14, BLANK PIN, 21, 25, 27, 31 pos. (9 POSITIONS)
40P	: 6, 8, 12, 14, 18, 23, 25, 29, 33, 35 pos. (10 POSITIONS)
50P	: 6, 8, 12, 14, 18, 22, BLANK PIN, 29, 33, 37, 39, 43, 45 pos. (13 POSITIONS)

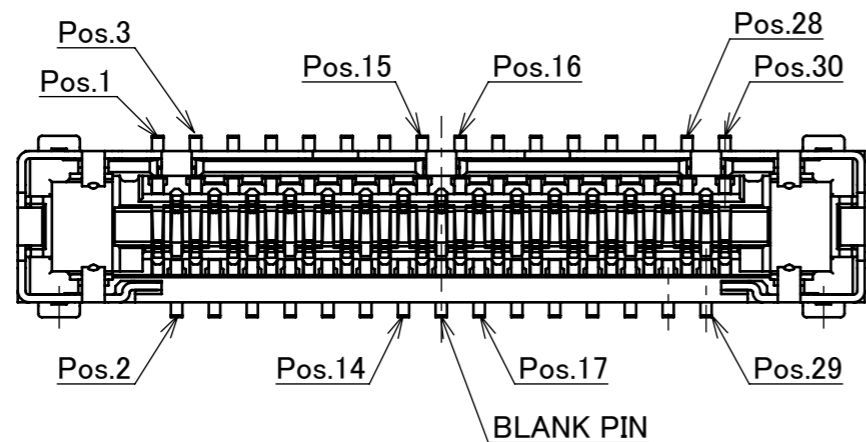
TABLE.1

PART NO.	CONTACT MATERIAL
20533-0**E	PHOSPHOR BRONZE
20533-0**E-01	CORSON ALLOY

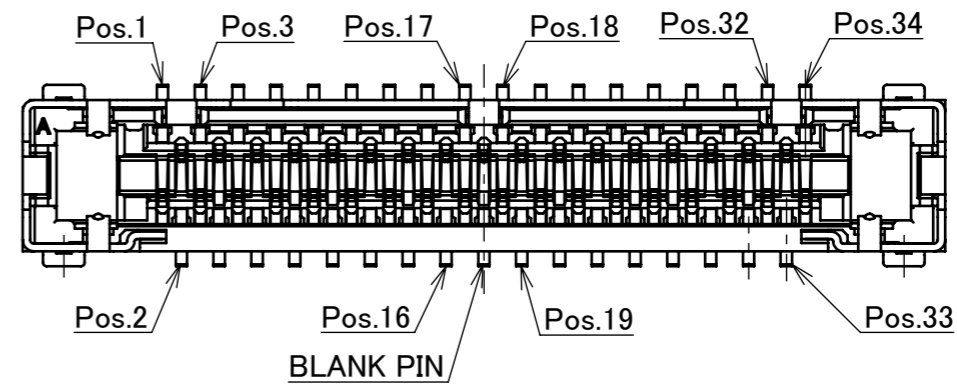
NO.	DISCRIPTION	MATERIAL	FINISH , REMARKS
4	VACUUM CLIP	LCP	UL94V-0, BEIGE
3	SHELL	PHOSPHOR BRONZE	Au 0.02 μm MIN. OVER Ni 1.00 μm MIN.
2	COTANCT	SEE ABOVE TABLE.1	CONTACT AREA : Au 0.1 μm MIN. OVER Ni 1.00 μm MIN. SOLDERING AREA : Au 0.05 μm MIN. OVER Ni 1.00 μm MIN.
1	HOUSING	LCP	UL94V-0, BLACK

REV.	ECN	BY	DATE	APP.	APP.	DATE	PROJECTION	SERIES No.	TITLE	SCALE	CUSTOMER COPY
16	Z240985	A.K	2024/07/24	H.I	ANGLE	±2°	6 OVER 30 MAX.	±0.3	CABLINER® -UX II RECEPTACLE ASSEMBLY	10:1	I-PEX
15	Z240044	RYO	2024/01/12	H.I	6 MAX.	±0.2	30 OVER 120 MAX.	±0.5		UNIT	
14	Z221348	A.K	2022/12/02	H.I	GENERAL TOLERANCE.				mm		
13	Z190765	A.K	2019/06/07	H.I	DWG.	M.Takemoto	DATE	2010/07/08	SIZE		
12	Z190729	A.K	2019/05/31	Y.S	CHK.	-			SHEET		
11	Z180877	A.K	2018/09/24	H.I	APP.	-			REV.		
REVISION RECORD					E.Kawabe	2010/07/12	DWG. No.	20533	A3	1/7	16

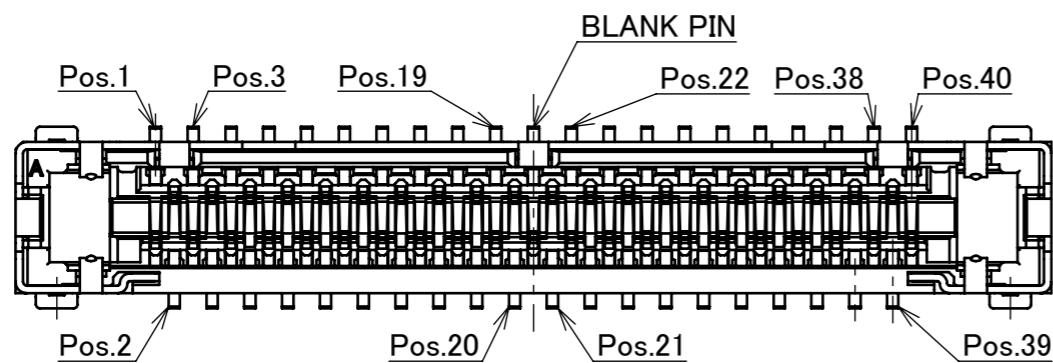
PART No.	Pos
20533-030E-**-**	30
20533-034E-**-**	34
20533-040E-**-**	40
20533-050E-**-**	50



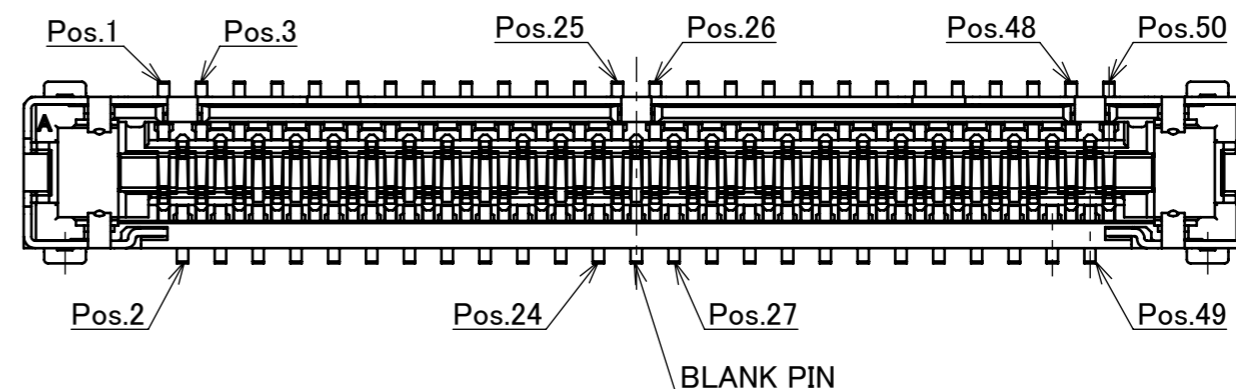
30P CONTACT LAYOUT
(S=10/1)



34P CONTACT LAYOUT
(S=10/1)



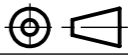
40P CONTACT LAYOUT
(S=10/1)



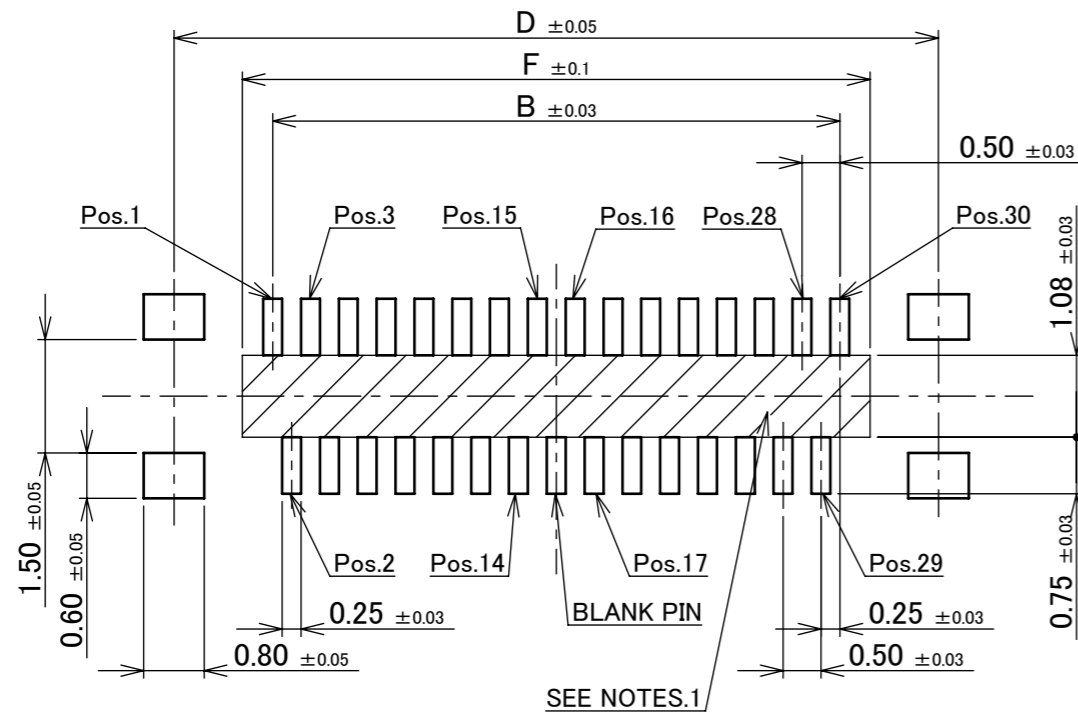
50P CONTACT LAYOUT
(S=10/1)

ANGLE	±2°	6 OVER 30 MAX.	±0.3	PROJECTION ⊕	SERIES No. R7	CUSTOMER COPY		
6 MAX.	±0.2	30 OVER 120 MAX.	±0.5					
GENERAL TOLERANCE.				TITLE CABLINEX [®] -UX II RECEPTACLE ASSEMBLY	SCALE 10:1	UNIT I-PEX		
DWG.	DATE							
CHK.								
APP.								
				DWG. No.	20533	SIZE A3	SHEET 2/7	REV. 16

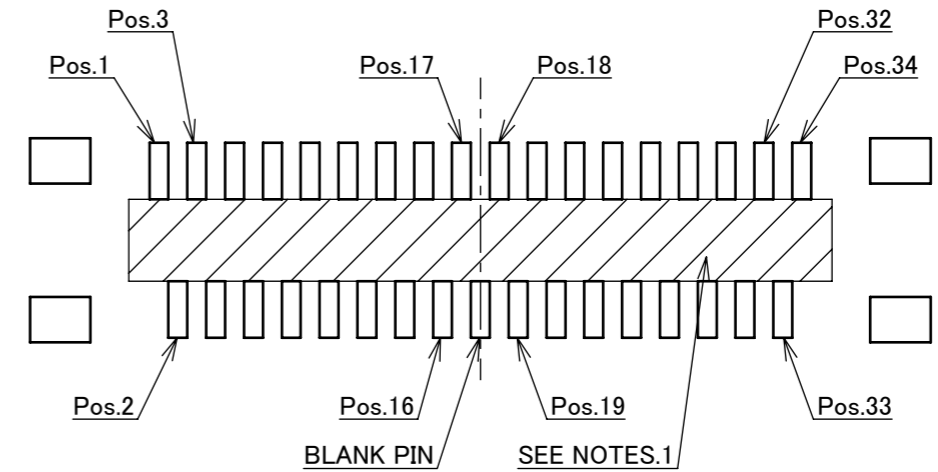
ITEMS	SPECIFICATION
APPLICABLE CABLE	MICRO-COAXIAL CABLE : AWG# 44 ,46 DISCRETE WIRE : AWG#39
RATING VOLTAGE	50V AC (PER CONTACT PIN)
RATING AMPERAGE (FOR CONTACT)	CONTACT MATERIAL : PHOSPHOR BRONZE (PLUG : 20531-0**T-02 ,RECEPTACLE : 20533-0**E) 0.50A AC/DC [AWG#39] (PER CONTACT PIN / UP TO 6 CONTACTS) 0.15A AC/DC [AWG#44] 0.10A AC/DC [AWG#46] CONTACT MATERIAL : CORSON ALLOY (PLUG : 20531-0**T-12 ,RECEPTACLE : 20533-0**E-01) 0.50A AC/DC [AWG#39] (PER CONTACT PIN / UP TO 8 CONTACTS) 0.19A AC/DC [AWG#44] 0.14A AC/DC [AWG#46]
OPERATING TEMPERATURE	233~358K(-40°C~+85°C)
OPERATING HUMIDITY	75% MAX.(NON-CONDENSING)
CONTACT RESISTANCE	INITIAL : 450mohm MAX.(AWG#39) 1080mohm MAX.(AWG#44) 1880mohm MAX.(AWG#46) AFTER TEST : \triangle 40mohm MAX.
GROUND SHELL RESISTANCE	INITIAL : 100mohm MAX. / AFTER TEST : \triangle 40mohm MAX.
INSULATION RESISTANCE	INITIAL : 100Mohm MIN. / AFTER TEST : 100Mohm MIN.
DIELECTRIC WITHSTANDING VOLTAGE	AC100V 1min
DURABILITY	20 CYCLES
MATING FORCE (INITIAL / AFTER TEST)	30P : 26.4N MAX. 34P : 27.6N MAX. 40P : 29.4N MAX. 50P : 32.4N MAX.
UNMATING FORCE (INITIAL / AFTER TEST)	30P : 1.5N MIN. 34P : 1.9N MIN. 40P : 2.5N MIN. 50P : 3.5N MIN.
CABLE RETENTION FORCE	30P : 15.0N MIN. 34P : 17.0N MIN. 40P : 20.0N MIN. 50P : 25.0N MIN.
COPLANARITY	0.10mm MAX.
PRODUCT SPECIFICATION	PRS-1555
TEST REPORT	TR-10051
INSTRUCTION MANUAL	HIM-10001
PACKING STANDARD	300-874
APPEARANCE CRITERIA No.	QLS-A***

ANGLE	$\pm 2^\circ$	6 OVER 30 MAX.	± 0.3	PROJECTION 	SERIES No. R7	CUSTOMER COPY		
	6 MAX.	± 0.2	30 OVER 120 MAX.					
GENERAL TOLERANCE.				TITLE CABLIN [®] -UX II RECEPTACLE ASSEMBLY	SCALE 5:1 UNIT mm	I-PEX		
DWG.	DATE							
CHK.								
APP.								
				DWG. No.	20533	SIZE A3	SHEET 3/7	REV. 16

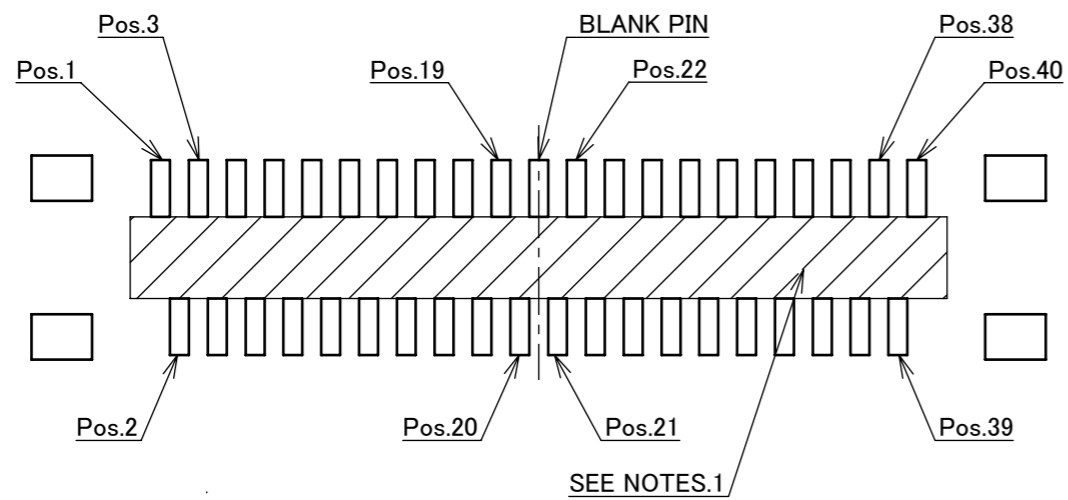
PART No.	Pos	B	D	F
20533-030E-**-**	30	7.50	10.11	8.30
20533-034E-**-**	34	8.50	11.11	9.30
20533-040E-**-**	40	10.00	12.61	10.80
20533-050E-**-**	50	12.50	15.11	13.30



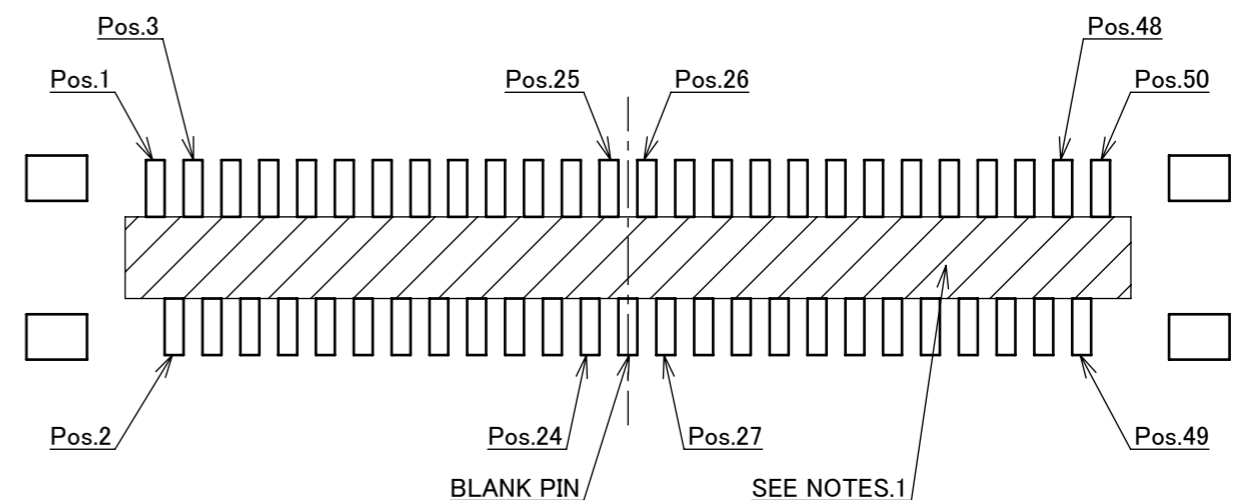
30P RECOMMENDED FOOTPRINT PATTERN LAYOUT



34P RECOMMENDED FOOTPRINT PATTERN LAYOUT



40P RECOMMENDED FOOTPRINT PATTERN LAYOUT

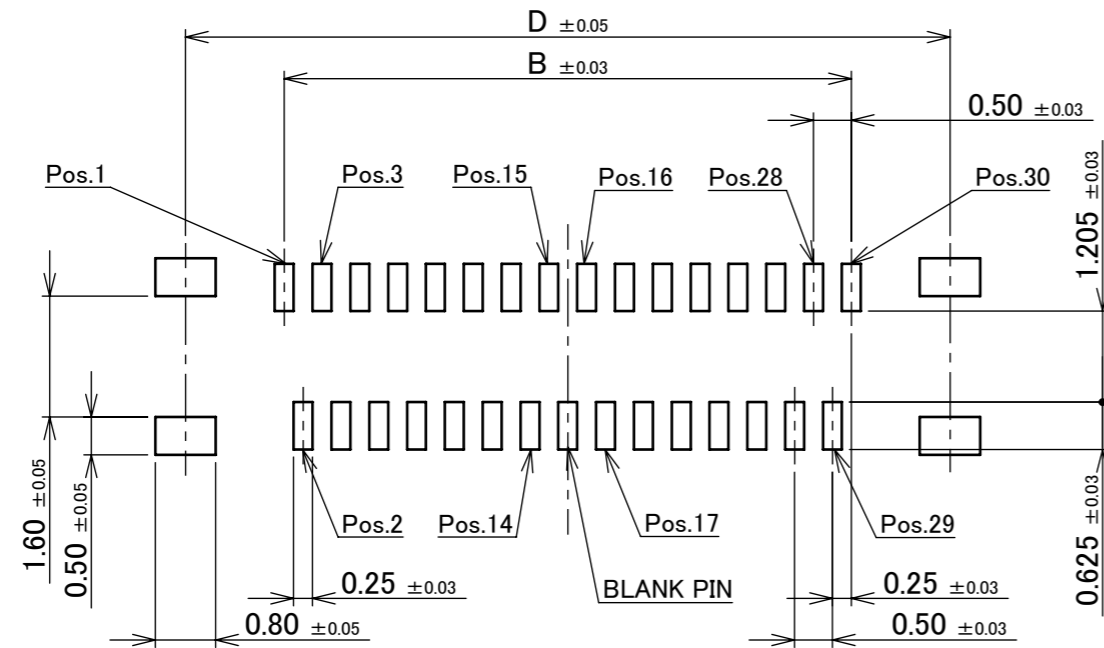


50P RECOMMENDED FOOTPRINT PATTERN LAYOUT

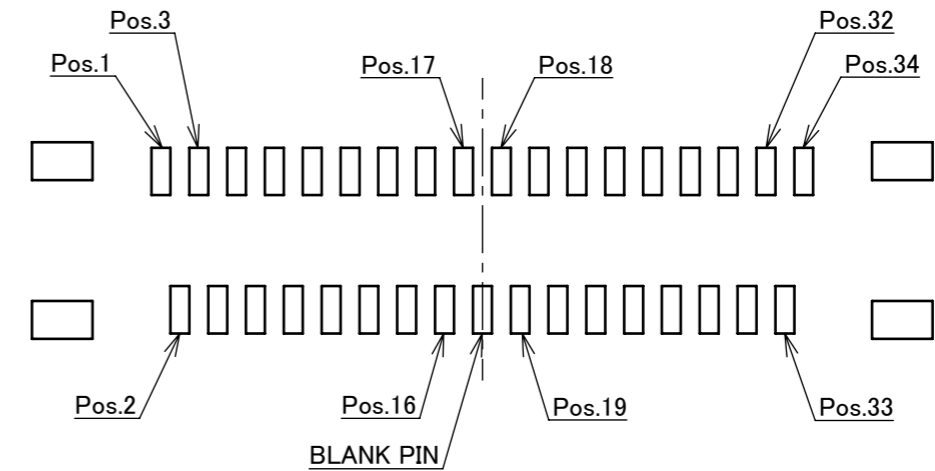
NOTES.
1. SOLDER RESIST SHALL BE APPLIED TO THIS AREA.

ANGLE	$\pm 2^\circ$	6 OVER 30 MAX.	± 0.3	PROJECTION	SERIES No.	CUSTOMER COPY	
	6 MAX.	30 OVER 120 MAX.	± 0.5		R7		
GENERAL TOLERANCE.				TITLE	SCALE	I-PEX	
DWG.	DATE			CABLIN [®] -UX II RECEPTACLE ASSEMBLY	10:1		
CHK.					UNIT		
APP.				DWG. No.	20533	SIZE	SHEET
						A3	4/7
							REV.
							16

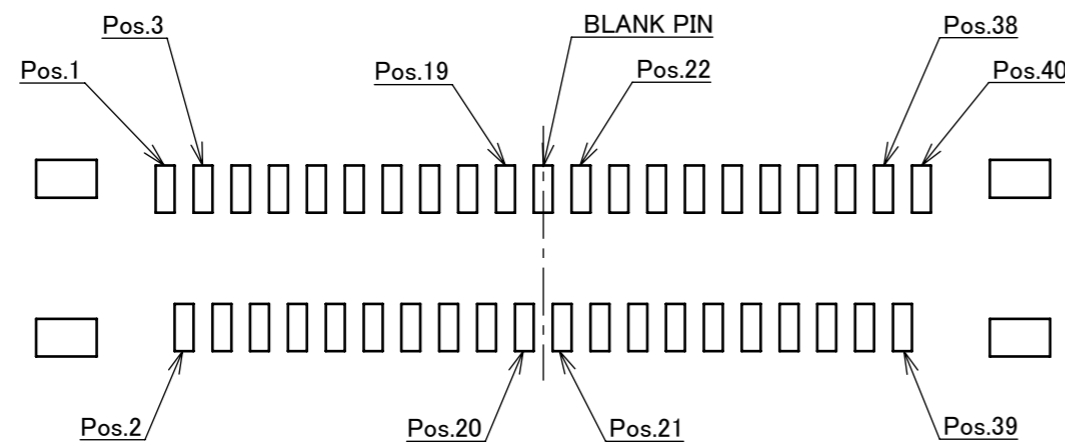
PART No.	Pos	B	D
20533-030E-**-**	30	7.50	10.11
20533-034E-**-**	34	8.50	11.11
20533-040E-**-**	40	10.00	12.61
20533-050E-**-**	50	12.50	15.11



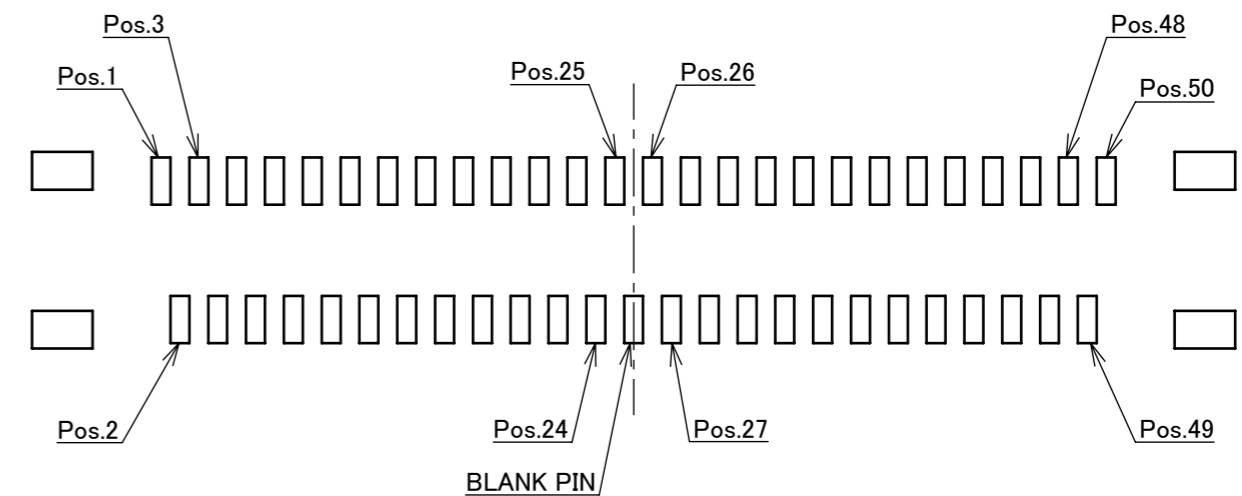
30P RECOMMENDED METAL MASK LAYOUT
METAL MASK THICKNESS : $t=0.12\text{mm}$



34P RECOMMENDED METAL MASK LAYOUT
METAL MASK THICKNESS : $t=0.12\text{mm}$

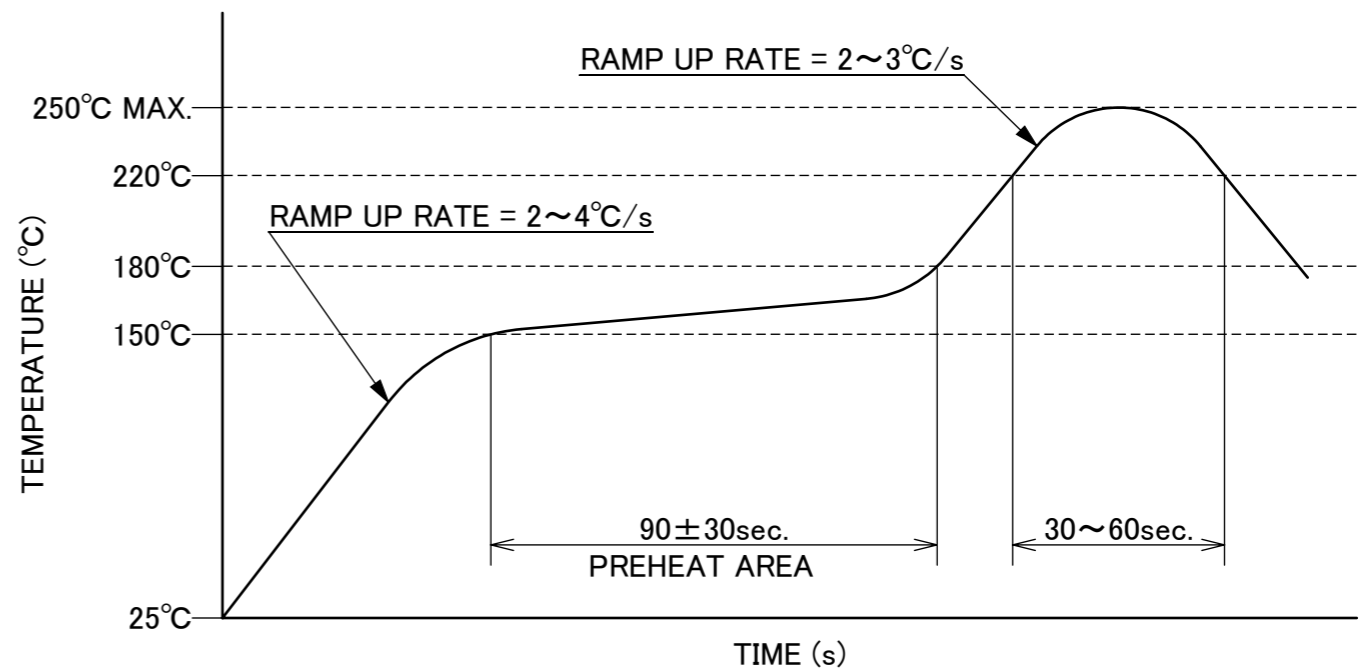
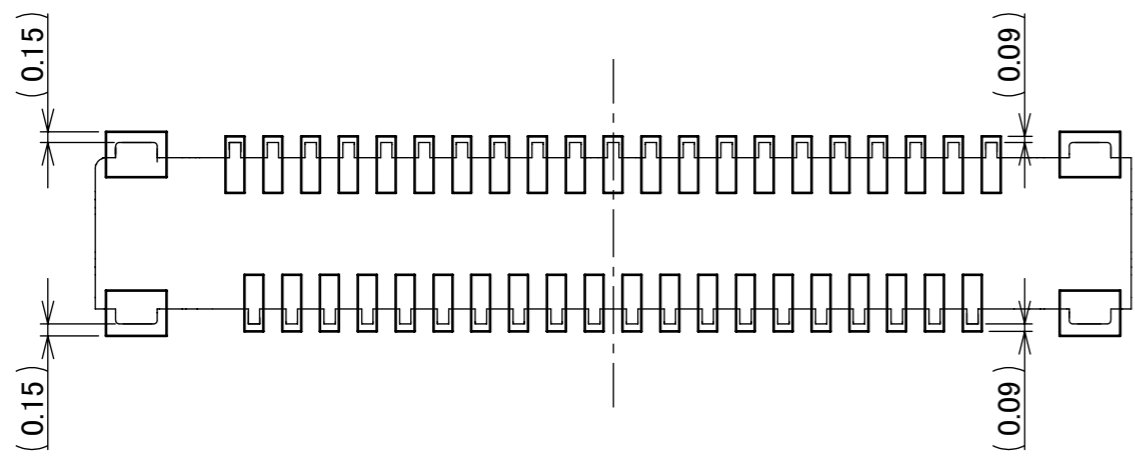


40P RECOMMENDED METAL MASK LAYOUT
METAL MASK THICKNESS : $t=0.12\text{mm}$



50P RECOMMENDED METAL MASK LAYOUT
METAL MASK THICKNESS : $t=0.12\text{mm}$

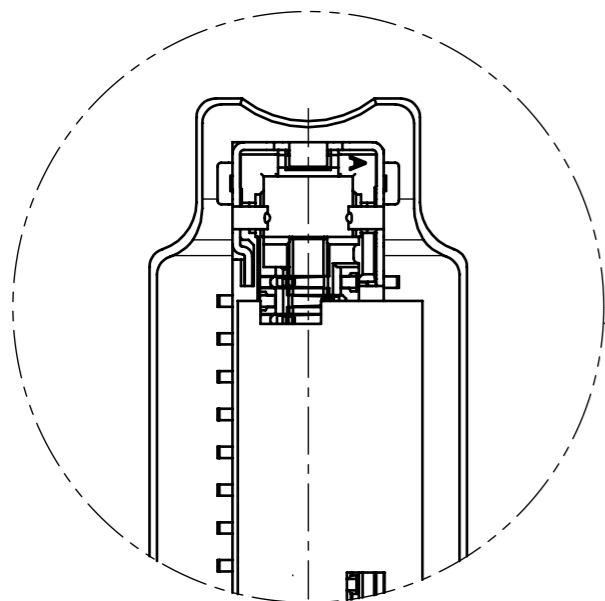
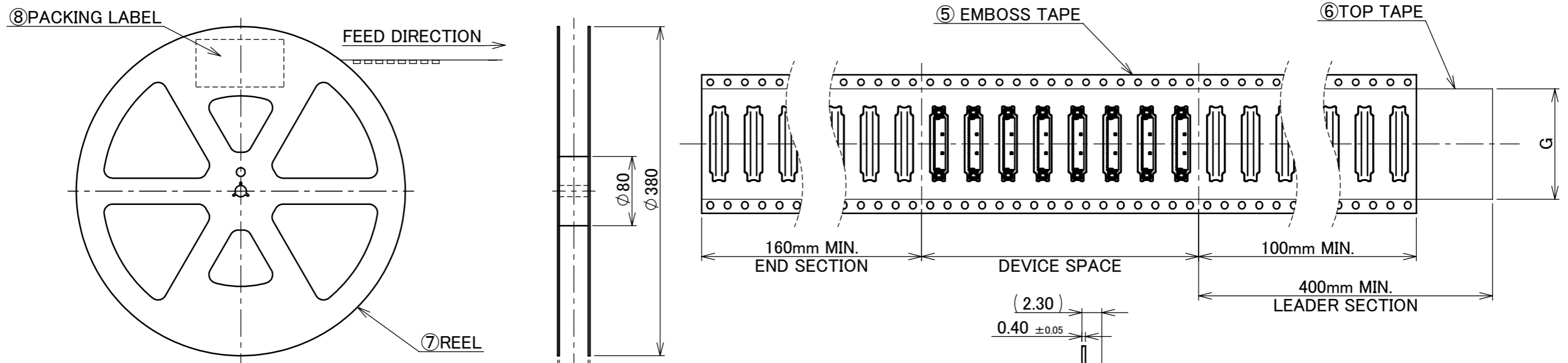
ANGLE	$\pm 2^\circ$	6 OVER 30 MAX.	± 0.3	PROJECTION 	SERIES No. R7	CUSTOMER COPY		
6 MAX.	± 0.2	30 OVER 120 MAX.	± 0.5					
GENERAL TOLERANCE.				TITLE CABLIN [®] -UX II RECEPTACLE ASSEMBLY	SCALE 10:1 UNIT mm	I-PEX		
DWG.	DATE							
CHK.								
APP.								
				DWG. No.	20533	SIZE A3	SHEET 5/7	REV. 16



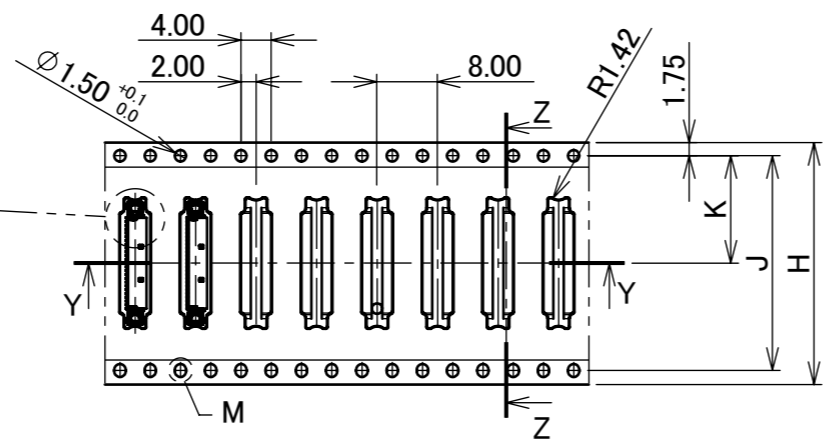
REFLOW TEMPERATURE PROFILE
 SENJU METAL INDUSTRY CO., LTD. : M705-SHF(Sn96.5 Ag3.0 Cu0.5)

ANGLE	±2°	6 OVER 30 MAX.	±0.3	PROJECTION 	SERIES No. R7	CUSTOMER COPY		
6 MAX.	±0.2	30 OVER 120 MAX.	±0.5					
GENERAL TOLERANCE.				TITLE CABLINE® -UX II RECEPTACLE ASSEMBLY	SCALE 10:1	UNIT I-PEX		
DWG.	DATE							
CHK.								
APP.								
				DWG. No.	20533	SIZE A3	SHEET 6/7	REV. 16

PART No.	Pos.	G	H	J	K	M	N	P	QTY. PER EMBOSS REEL (PIECES / REEL)	QTY. PER PACKING CARTON (REELS / CARTON)
20533-030E-##	30	21.3	24.0	-	11.5	12.2	11.6	9.7	5000 / REEL	4 REELS / CARTON = 20000
20533-034E-##	34	21.3	24.0	-	11.5	13.2	12.6	10.7		
20533-040E-##	40	21.3	24.0	-	11.5	14.7	14.1	12.2		
20533-050E-##	50	25.5	32.0	28.4	14.2	17.2	16.6	14.7		

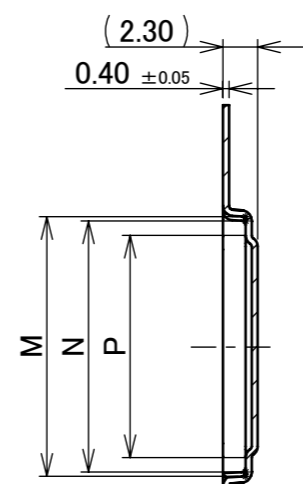


CONNECTOR DIRECTION (S=10/1)

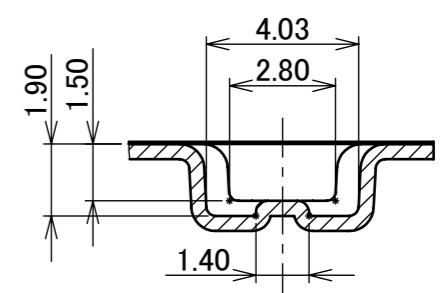


FEED DIRECTION

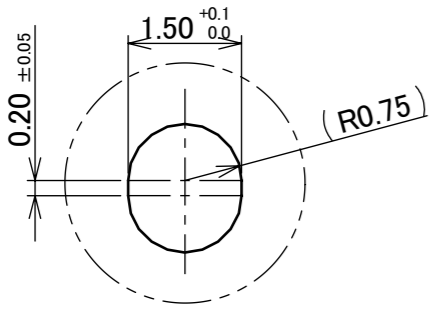
SECT. Y-Y



SECT. Z-Z (S=2/1)



DETAIL L (S=5/1)



DETAIL M (S=10/1)

- NOTES.
- TAPING SPECIFICATION FOLLOWS JIS C 0806 (IEC 60286-3).
 - MAKE EMPTY SECTION OF LEADER AND END ON EACH END OF THE TAPE.
 - TOP TAPE SHALL NOT STICK OUT FROM EMBOSS TAPE.
 - TOP TAPE SHALL NOT COVER FEED HOLE.

NO.	DISCRIPTION	MATERIAL	FINISH , REMARKS
8	PACKING LABEL	-	-
7	REEL	PS	ANTI-STATIC TYPE BLACK
6	TOP TAPE	PET t=0.062 TRANSPARENCY	ANTI-STATIC TYPE
5	EMBOSS TAPE	PS t=0.4 TRANSPARENCY	ANTI-STATIC TYPE

ANGLE	±2°	6 OVER 30 MAX.	±0.3	PROJECTION	SERIES No.	CUSTOMER COPY		
6 MAX.	±0.2	30 OVER 120 MAX.	±0.5		R7	SCALE	1:1	
GENERAL TOLERANCE.						TITLE	I-PEX	
DWG.	DATE				CABLIN® -UX II RECEPTACLE ASSEMBLY	UNIT	mm	
CHK.						SIZE	SHEET	REV.
APP.						DWG. No.	20533	7/7