

Recommended P/N 20879-0**E-01

PART NO.	Pos.	A	B	C	D	E	F	G	H
20879-030E-#1	30	15.27	13.01	11.60	9.60	12.07	12.88	15.27	13.65
20879-040E-#1	40	19.27	17.01	15.60	14.40	16.07	16.88	19.27	17.65
20879-050E-#1	50	23.27	21.01	19.60	17.60	20.07	20.88	23.27	21.65
20879-060E-#1	60	27.27	25.01	23.60	21.60	24.07	24.88	27.27	25.65

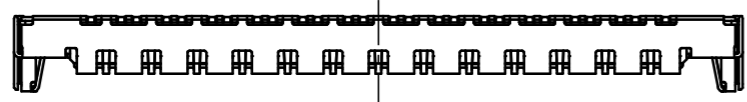
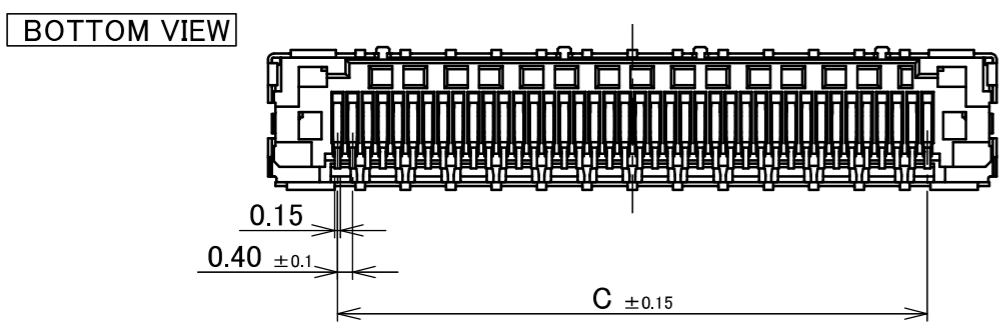
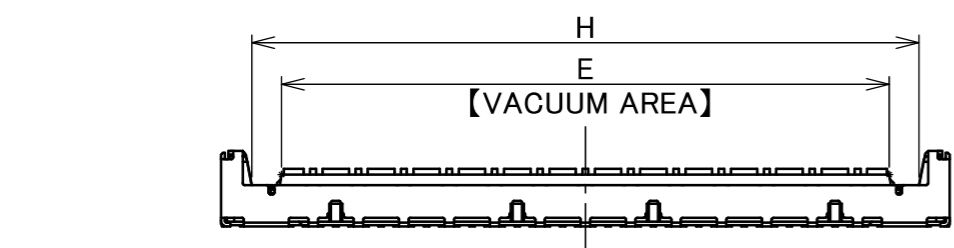
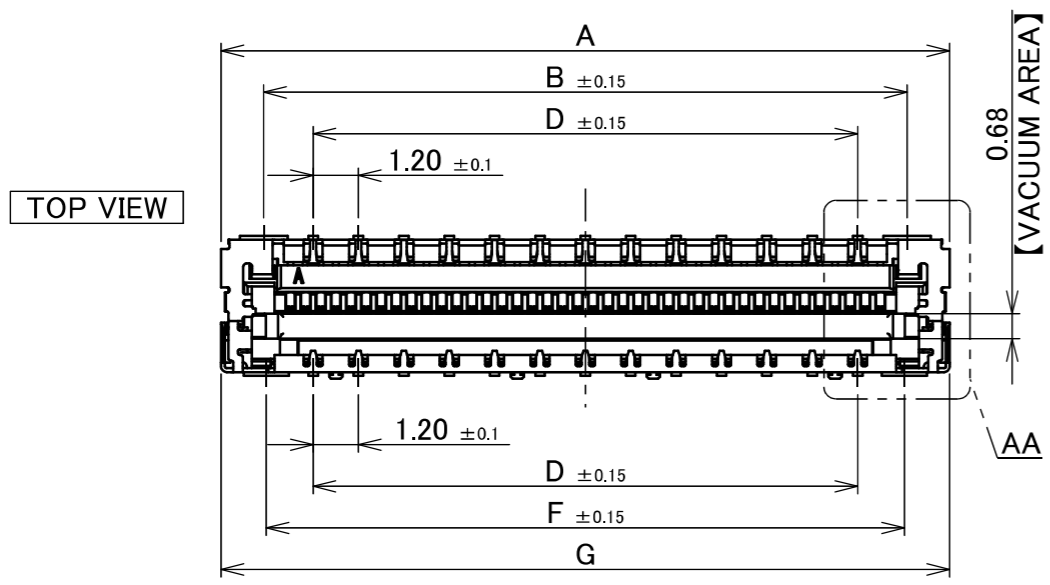
P/N : 20879-0**E-##

1 : NARROW GROUND PIN TYPE
 2 : WIDER GROUND PIN TYPE
 SEE TABLE.1

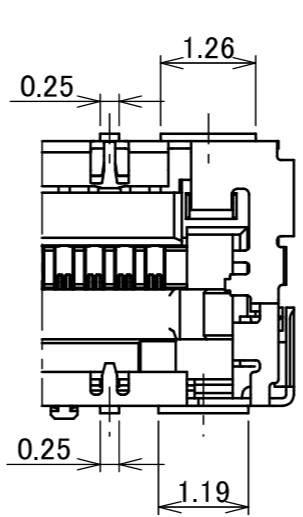
#1 TYPE



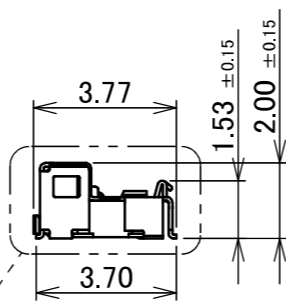
Halogen Free RoHS Compliant



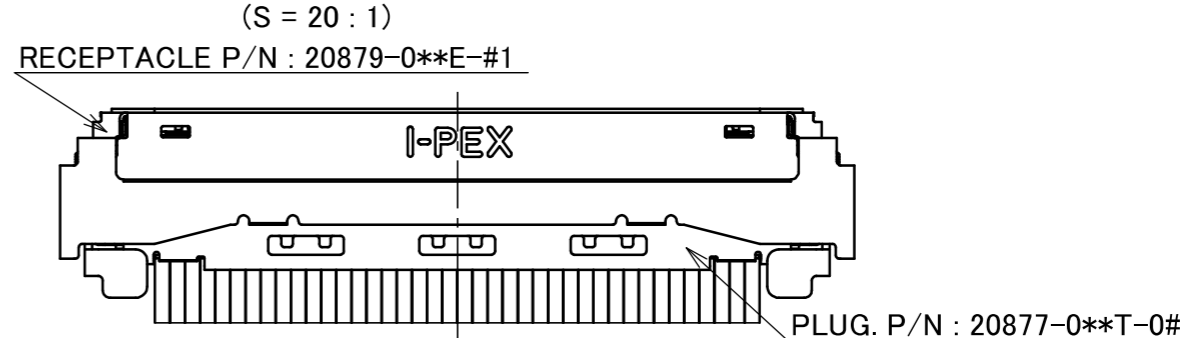
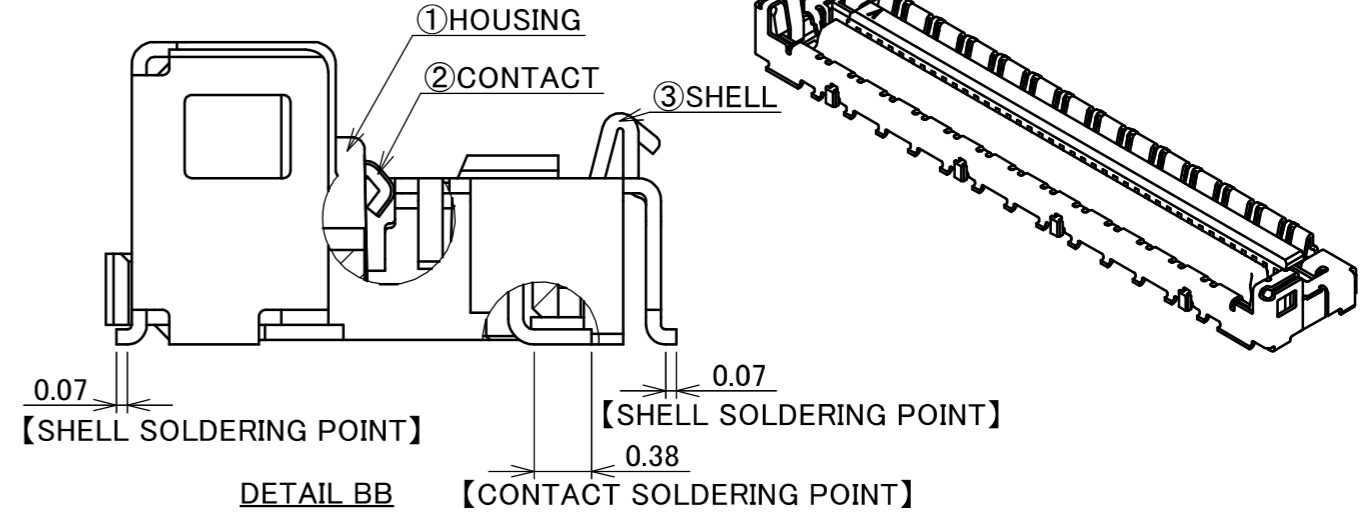
PATENT PENDING



DETAIL AA (S=10:1)



DETAIL BB (S=20:1)



MATING CONDITION

PART NO.	CONTACT FINISH
20879-0**E-01	ALL OVER Ni 1.00 μm MIN. CONTACT & SOLDERING AREA : Au 0.03 μm MIN.
20879-0**E-11	ALL OVER Ni 1.27 μm MIN. CONTACT AREA : Au 0.254 μm MIN. SOLDERING AREA : Au 0.03 μm MIN.

NO.	DISCRIPTION	MATERIAL	FINISH , REMARKS
3	SHELL	PHOSPHOR BRONZE	ALL OVER : Ni 1.00 μm MIN. SOLDERING AREA : Au 0.02 μm MIN.
2	CONTACT	CORSON ALLOY	SEE TABLE.1
1	HOUSING	LCP	UL94V-0, BLACK

REV.	ECN	BY	DATE	APP.	APP.	PROJECTION	SERIES No.	TITLE	SCALE	SHEET	REV.
15	Z241861	K.Ta	Dec./24/'24	T.M	ANGLE ±2°	6 OVER 30 MAX. ±0.3	R5	CABLINER [®] -UM RECEPTACLE ASSEMBLY	5:1	I-PEX	15
14	Z241484	T.Ono	Oct./23/'24	T.M	6 MAX. ±0.2	30 OVER 120 MAX. ±0.5			UNIT		
13	Z240414	T.Ono	Apr./04/'24	T.M	GENERAL TOLERANCE.				mm		
12	Z240035	R.M	Jan./11/'24	T.M	DWG. T.Masunaga	DATE 2019/01/10			SIZE		
11	Z231031	H.U	Sept./13/'23	T.M	CHK. -				SHEET		
10	Z230612	R.M	May./26/'23	T.M	APP. H.Ikari		DWG. No. 20879	1/17			
REVISION RECORD											

Recommended P/N 20879-0**E-01

PART NO.	Pos.	A	D	G
20879-030E-#1	30	15.27	9.60	15.27
20879-040E-#1	40	19.27	14.40	19.27
20879-050E-#1	50	23.27	17.60	23.27
20879-060E-#1	60	27.27	21.60	27.27

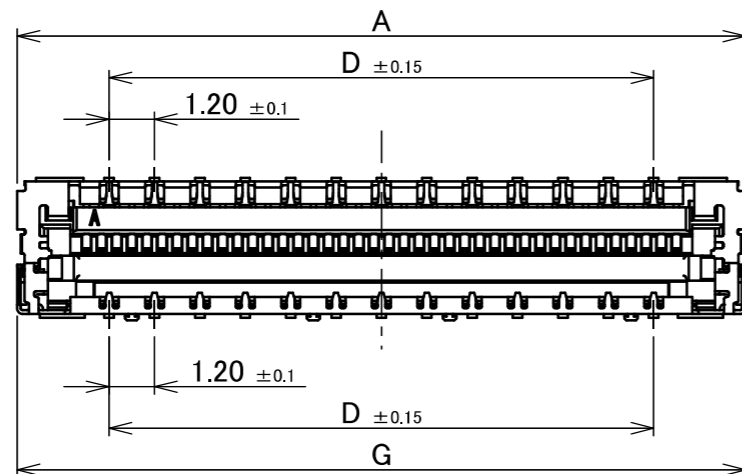


Halogen Free

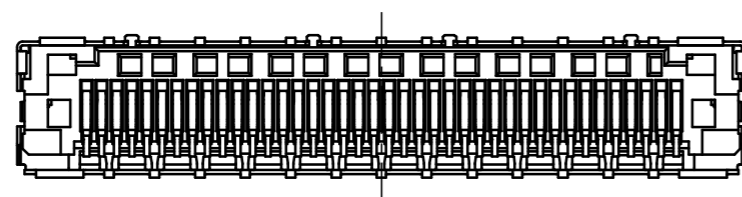


RoHS Compliant

TOP VIEW

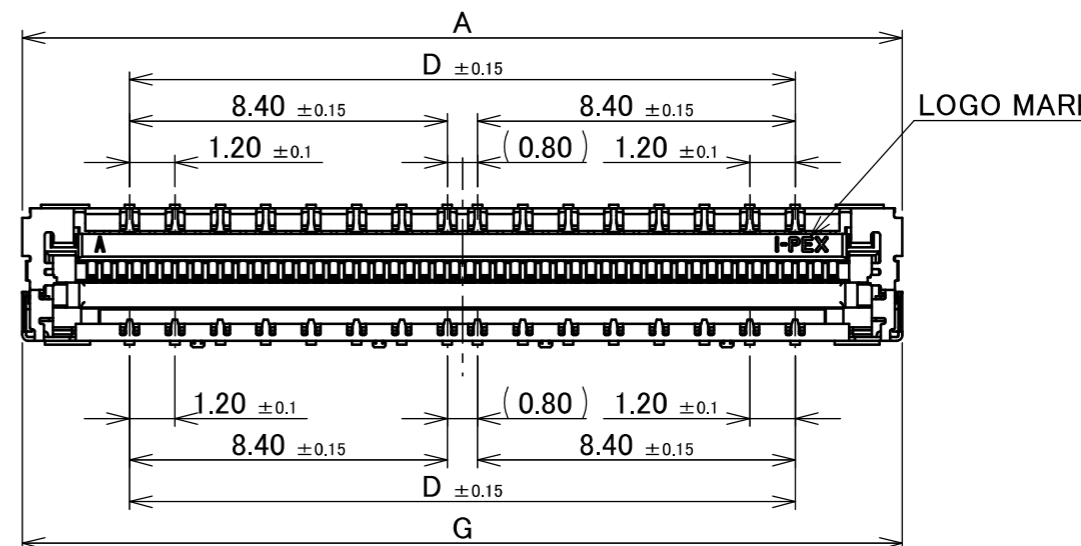


BOTTOM VIEW

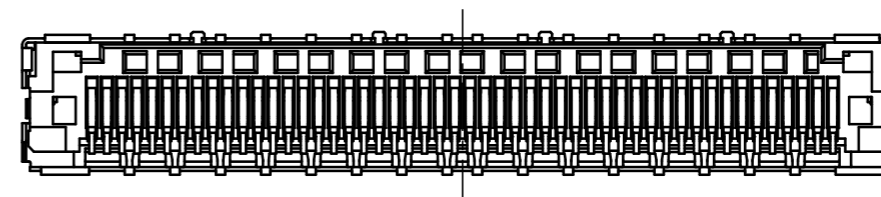


30P, 40P, 60P

TOP VIEW



BOTTOM VIEW



50P

PATENT PENDING

ANGLE	±2°	6 OVER 30 MAX.	±0.3	PROJECTION ⊕	SERIES No. R5	CUSTOMER COPY		
6 MAX.	±0.2	30 OVER 120 MAX.	±0.5					
GENERAL TOLERANCE.				TITLE CABLINÉ® -UM RECEPTACLE ASSEMBLY	SCALE 5:1	UNIT I-PEX		
DWG.	DATE							
CHK.								
APP.								
				DWG. No.	20879	SIZE A3	SHEET 2/17	REV. 15

Recommended P/N 20879-0**E-01

PART NO.	Pos.	A	C	E	G	H	J	K	L	M	N
20879-030E-02	30	15.27	11.60	12.07	15.27	13.65	14.87	4.00	-	7.09	14.69
20879-040E-02	40	19.27	15.60	16.07	19.27	17.65	18.87	8.00	4.00	6.70	18.69
20879-050E-02	50	23.27	19.60	20.07	23.27	21.65	22.87	14.40	3.60	8.70	22.69
20879-060E-02	60	27.27	23.60	24.07	27.27	25.65	26.87	17.60	-	10.70	26.69

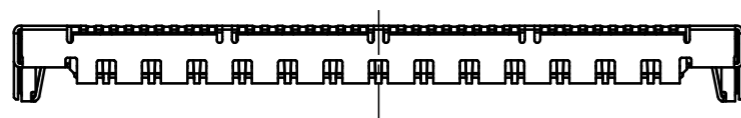
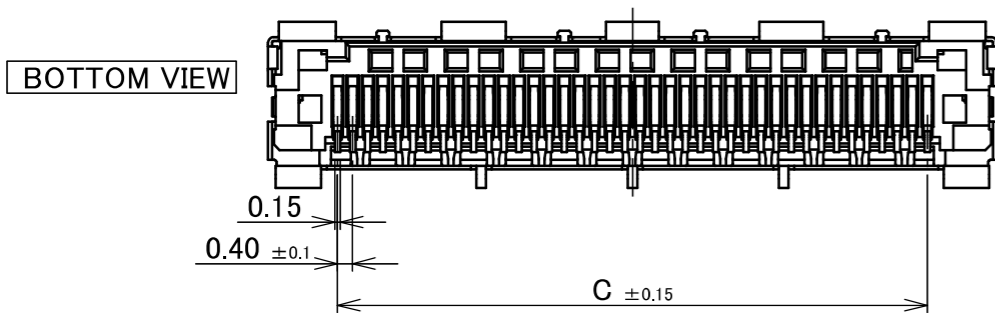
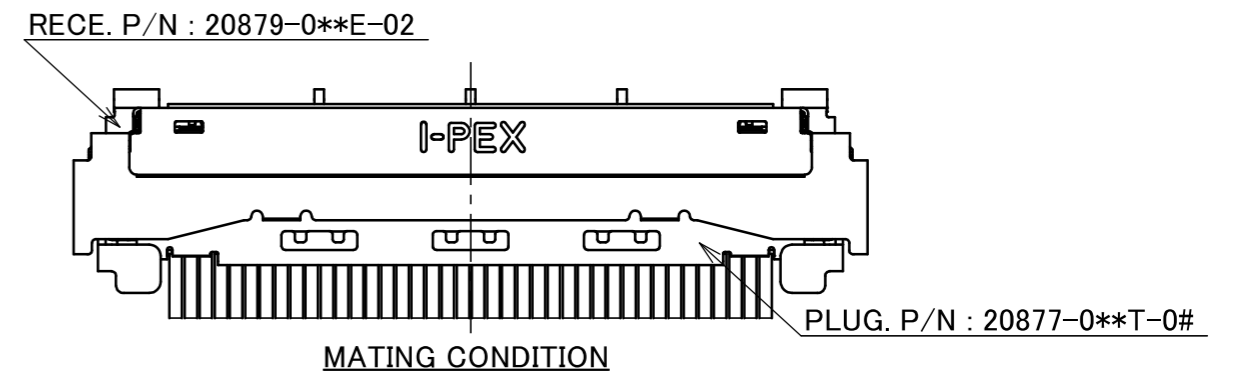
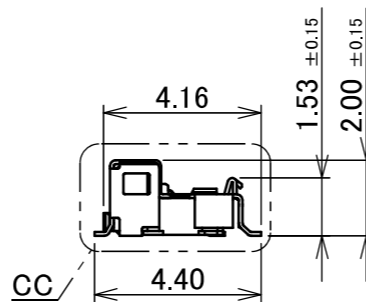
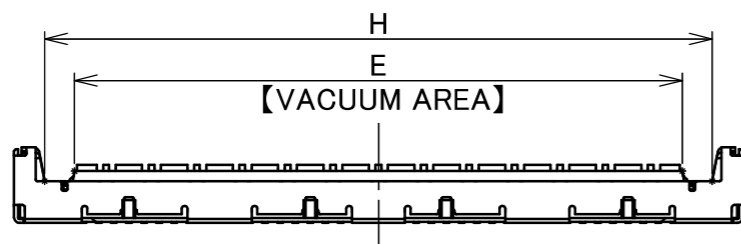
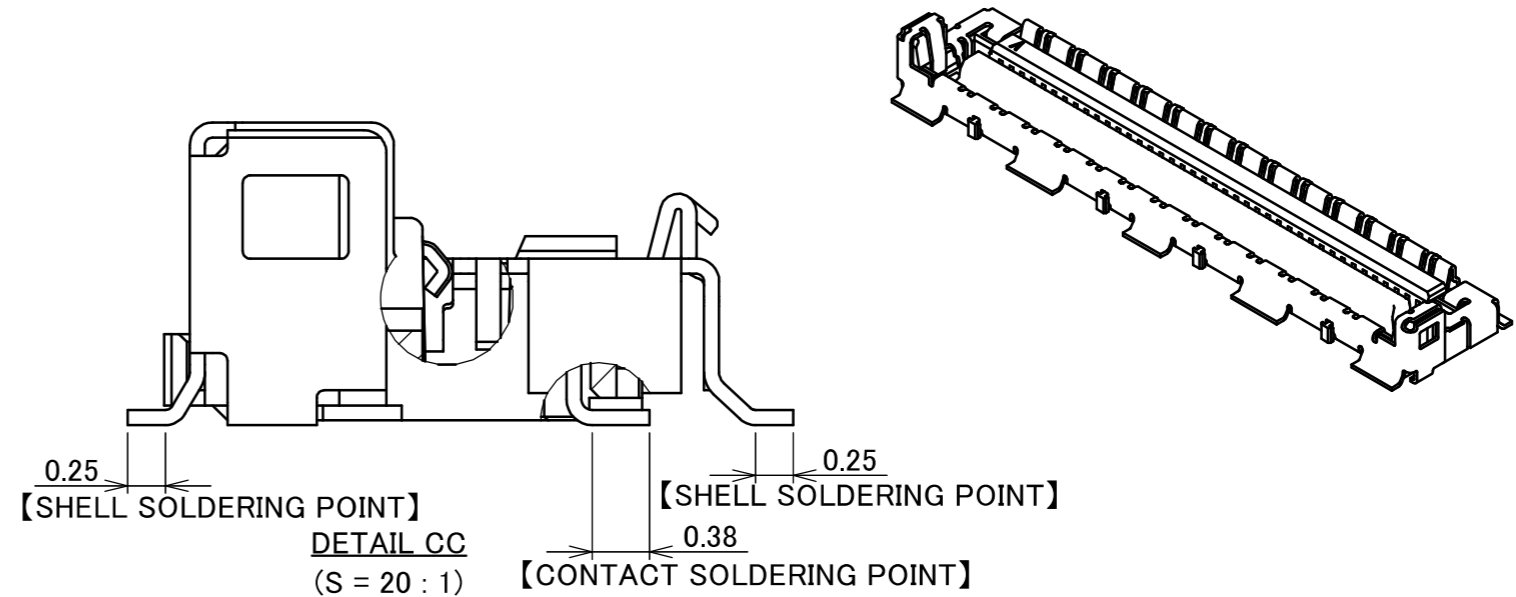
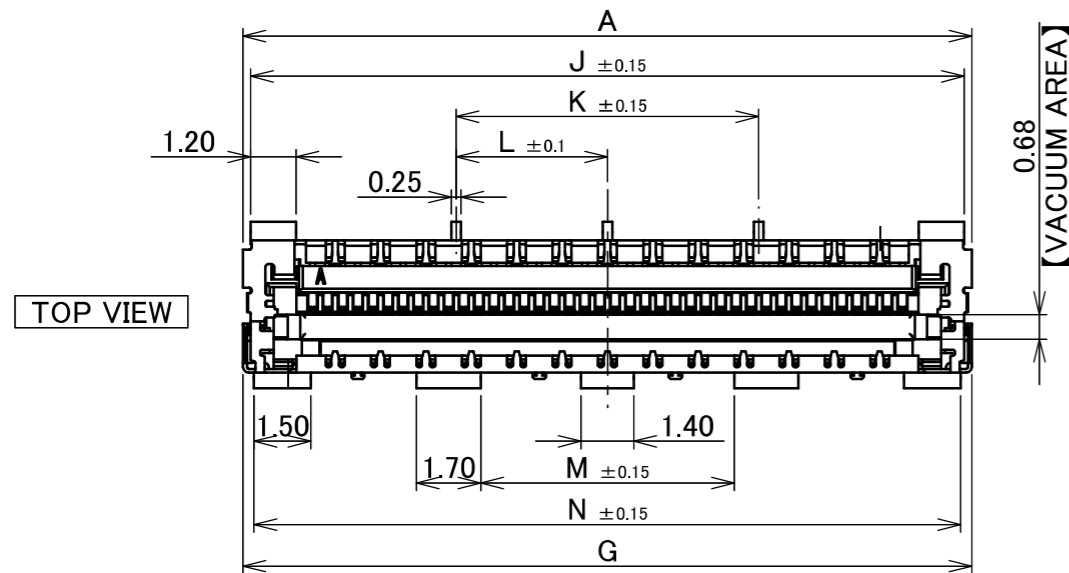
02 TYPE



Halogen Free



RoHS Compliant



PATENT PENDING

ANGLE	±2°	6 OVER 30 MAX.	±0.3	PROJECTION ⊕	SERIES No. R5	CUSTOMER COPY		
6 MAX.	±0.2	30 OVER 120 MAX.	±0.5					
GENERAL TOLERANCE.				TITLE CABLINÉ® -UM RECEPTACLE ASSEMBLY	SCALE 5:1 UNIT mm	I-PEX		
DWG.	DATE							
CHK.								
APP.								
				DWG. No.	20879	SIZE A3	SHEET 3/17	REV. 15

Recommended P/N 20879-0**E-01

PART NO.	Pos.	A	C	E	G	H	J	K	L	M	N	P	AD
20879-030E-02	30	15.27	11.60	12.07	15.27	13.65	14.87	4.00	-	7.09	14.69	-	-
20879-040E-02	40	19.27	15.60	16.07	19.27	17.65	18.87	8.00	4.00	6.70	18.69	-	-
20879-050E-02	50	23.27	19.60	20.07	23.27	21.65	22.87	14.40	3.60	8.70	22.69	7.20	-
20879-060E-02	60	27.27	23.60	24.07	27.27	25.65	26.87	17.60	-	10.70	26.69	11.20	3.20

02 TYPE

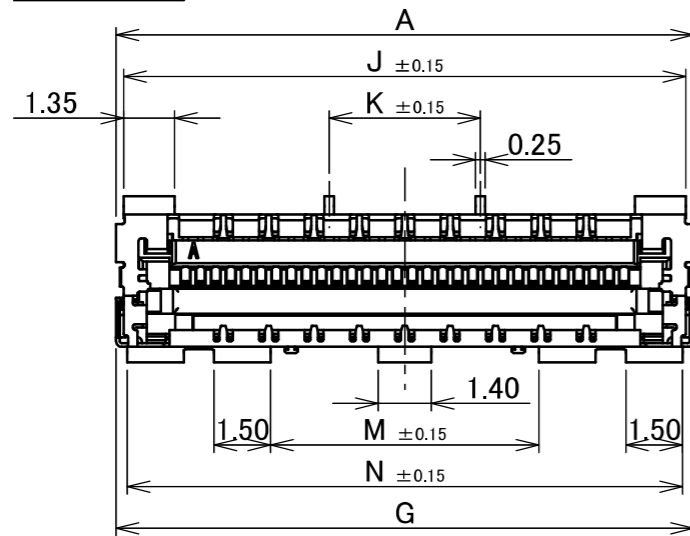


Halogen Free



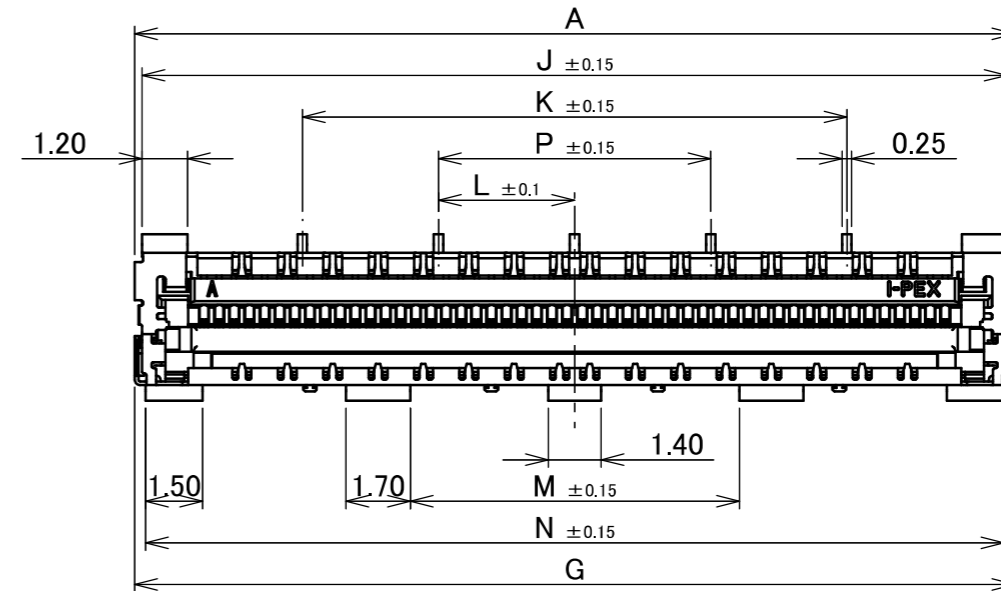
RoHS Compliant

TOP VIEW



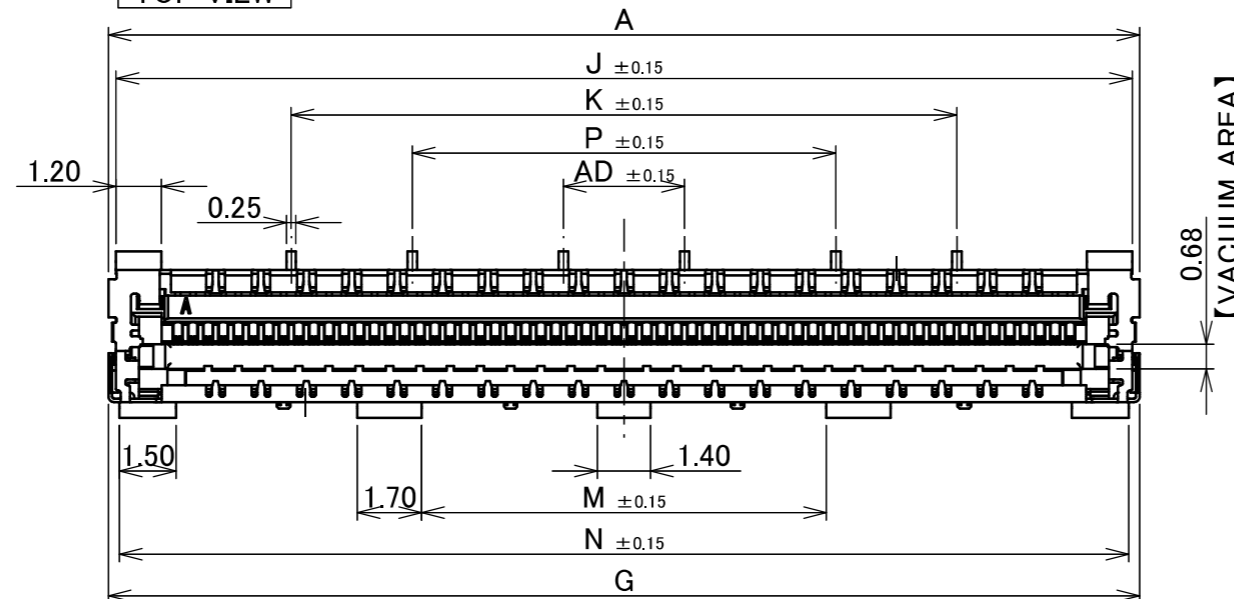
30P SHAPE
(S = 5 : 1)

TOP VIEW



50P SHAPE
(S=5/1)

TOP VIEW

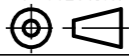



60P SHAPE
(S = 5 : 1)

PATENT PENDING

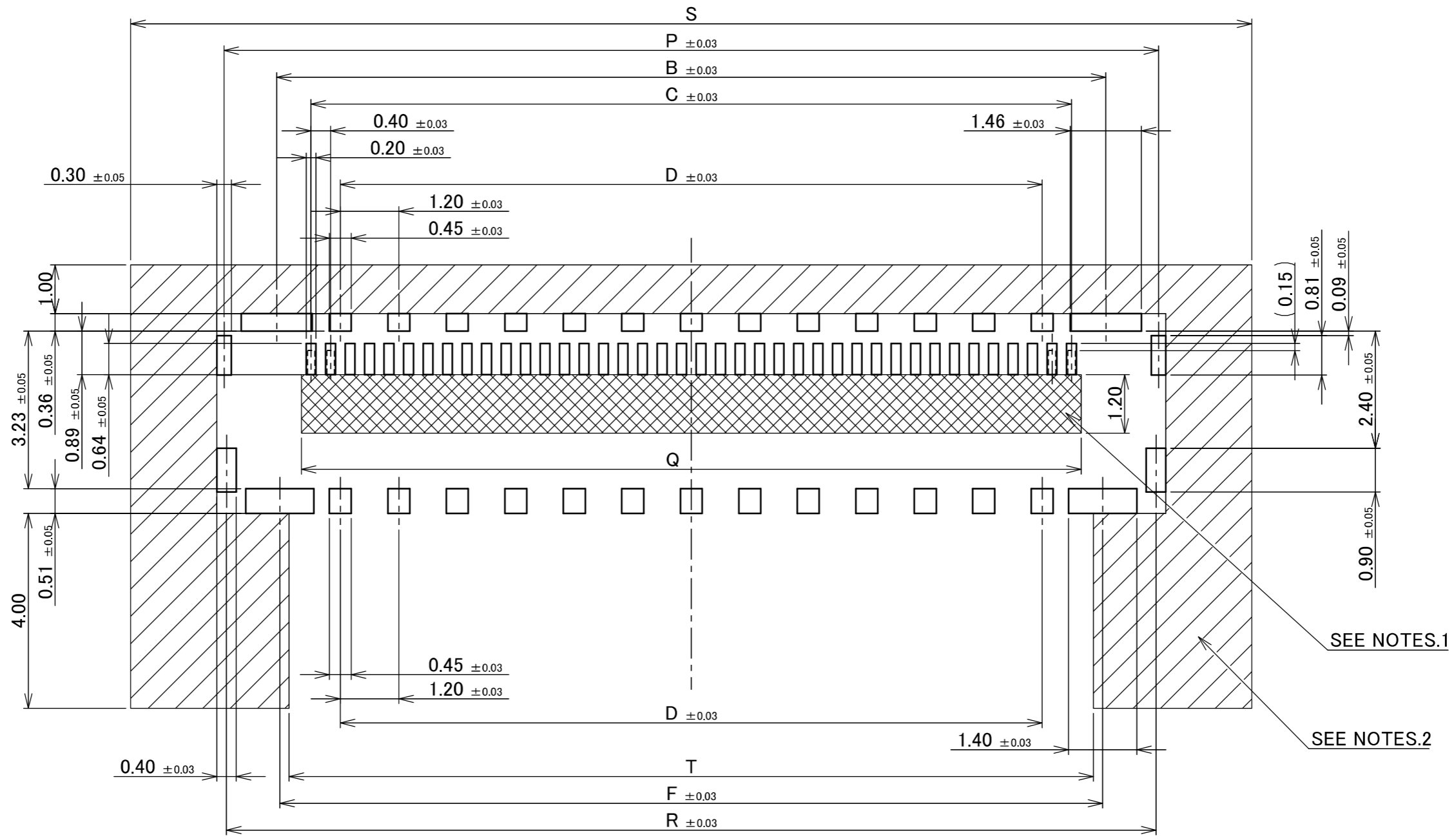
ANGLE	±2°	6 OVER 30 MAX.	±0.3	PROJECTION ⊕	SERIES No. R5	CUSTOMER COPY		
6 MAX.	±0.2	30 OVER 120 MAX.	±0.5					
GENERAL TOLERANCE.				TITLE CABLINÉ® -UM RECEPTACLE ASSEMBLY	SCALE 5:1 UNIT mm	I-PEX		
DWG.	DATE							
CHK.								
APP.								
				DWG. No.	20879	SIZE A3	SHEET 4/17	REV. 15

ITEMS	SPECIFICATION
APPLICABLE CABLE	MICRO-COAXIAL CABLE : AWG# 44 , 42 , 40 , 38 , 36 DISCRETE WIRE : AWG# 36 , 34 TWINAX CABLE : AWG# 40 , 42
RATING VOLTAGE	100V AC (PER CONTACT PIN) ※THIS IS THE RATED VOLTAGE OF THE CONNECTOR. PLEASE NOTE THAT THE RATED VOLTAGE MAY VARY IN THE HARNESS DEPENDING ON THE CABLES USED.
RATING AMPERAGE (FOR CONTACT)	0.15A AC/DC [AWG#44] PER CONTACT PIN/UP TO 60 CONTACTS 0.24A AC/DC [AWG#42] PER CONTACT PIN/UP TO 49 CONTACTS 0.3A AC/DC [AWG#40] PER CONTACT PIN/UP TO 38 CONTACTS 0.5A AC/DC [AWG#38] PER CONTACT PIN/UP TO 19 CONTACTS 0.8A AC/DC [AWG#36] PER CONTACT PIN/UP TO 12 CONTACTS 1.0A AC/DC [AWG#34] PER CONTACT PIN/UP TO 10 CONTACTS ※TESTING BY A REAL MACHINE IS RECOMMENDED BECAUSE TEMPERATURE RISE MAY AFFECTED BY ACTUAL SITUATION.
OPERATING TEMPERATURE	233~378K(-40°C~+105°C)
OPERATING HUMIDITY	85% MAX.
CONTACT RESISTANCE	INITIAL : 180mohm MAX.(AWG#34) / AFTER TEST : \triangleleft 40mohm MAX. 275mohm MAX.(AWG#36) 360mohm MAX.(AWG#38) 600mohm MAX.(AWG#40) 700mohm MAX.(AWG#42) 1080mohm MAX.(AWG#44)
GROUND SHELL RESISTANCE	INITIAL : 50mohm MAX. / AFTER TEST : \triangleleft 40mohm MAX.
INSULATION RESISTANCE	INITIAL : 1000Mohm MIN. / AFTER TEST : 500Mohm MIN.
DIELECTRIC WITHSTANDING VOLTAGE	AC250V 1min
DURABILITY	30 CYCLES
MATING FORCE (INITIAL / AFTER TEST)	30P : 34.00N MAX. 50P : 46.00N MAX. 40P : 40.00N MAX. 60P : 52.00N MAX.
UNMATING FORCE (INITIAL / AFTER TEST)	30P : 3.0N MIN. 50P : 5.0N MIN. 40P : 4.0N MIN. 60P : 6.0N MIN.
CABLE RETENTION FORCE	30P : 14.70N MIN. 50P : 24.50N MIN. 40P : 19.60N MIN. 60P : 29.40N MIN.
COPLANARITY	0.10 MAX.
PRODUCT SPECIFICATION	PRS-2514
TEST REPORT	TR-18067 (PLUG:20877-0**T-0#, RECEPTACLE:20879-0**E-01) TR-18088 (PLUG:20877-0**T-0#, RECEPTACLE:20879-0**E-02) TR-24001 (PLUG:20877-0**T-0#, RECEPTACLE:20879-0**E-11) TR-24002 (PLUG:20877-0**T-1#, RECEPTACLE:20879-0**E-01) TR-24003 (PLUG:20877-0**T-1#, RECEPTACLE:20879-0**E-02) TR-24004 (PLUG:20877-0**T-1#, RECEPTACLE:20879-0**E-11)
PACKING STANDARD	PST-18043
INSTRUCTION MANUAL	HIM-18033
APPEARANCE CRITERIA No.	QLS-A***

ANGLE	$\pm 2^\circ$	6 OVER 30 MAX.	± 0.3	PROJECTION 	SERIES No. R5	CUSTOMER COPY		
	6 MAX.	± 0.2	30 OVER 120 MAX.					
GENERAL TOLERANCE.				TITLE CABLIN [®] -UM RECEPTACLE ASSEMBLY	SCALE mm			
DWG.	DATE							
CHK.								
APP.								
				DWG. No.	20879	SIZE	SHEET	REV.
						A3	5/17	15

PART No.	Pos.	B	C	D	F	P	Q	R	S	T
20879-030E-#1	30	13.01	11.60	9.60	12.88	15.17	12.00	15.07	19.00	12.50
20879-040E-#1	40	17.01	15.60	14.40	16.88	19.17	16.00	19.07	23.00	16.50
20879-060E-#1	60	25.01	23.60	21.60	24.88	27.17	24.00	27.07	31.00	24.50

#1 TYPE



#1 TYPE 30P, 40P, 60P RECOMMENDED PCB LAYOUT
(S = 10 : 1)

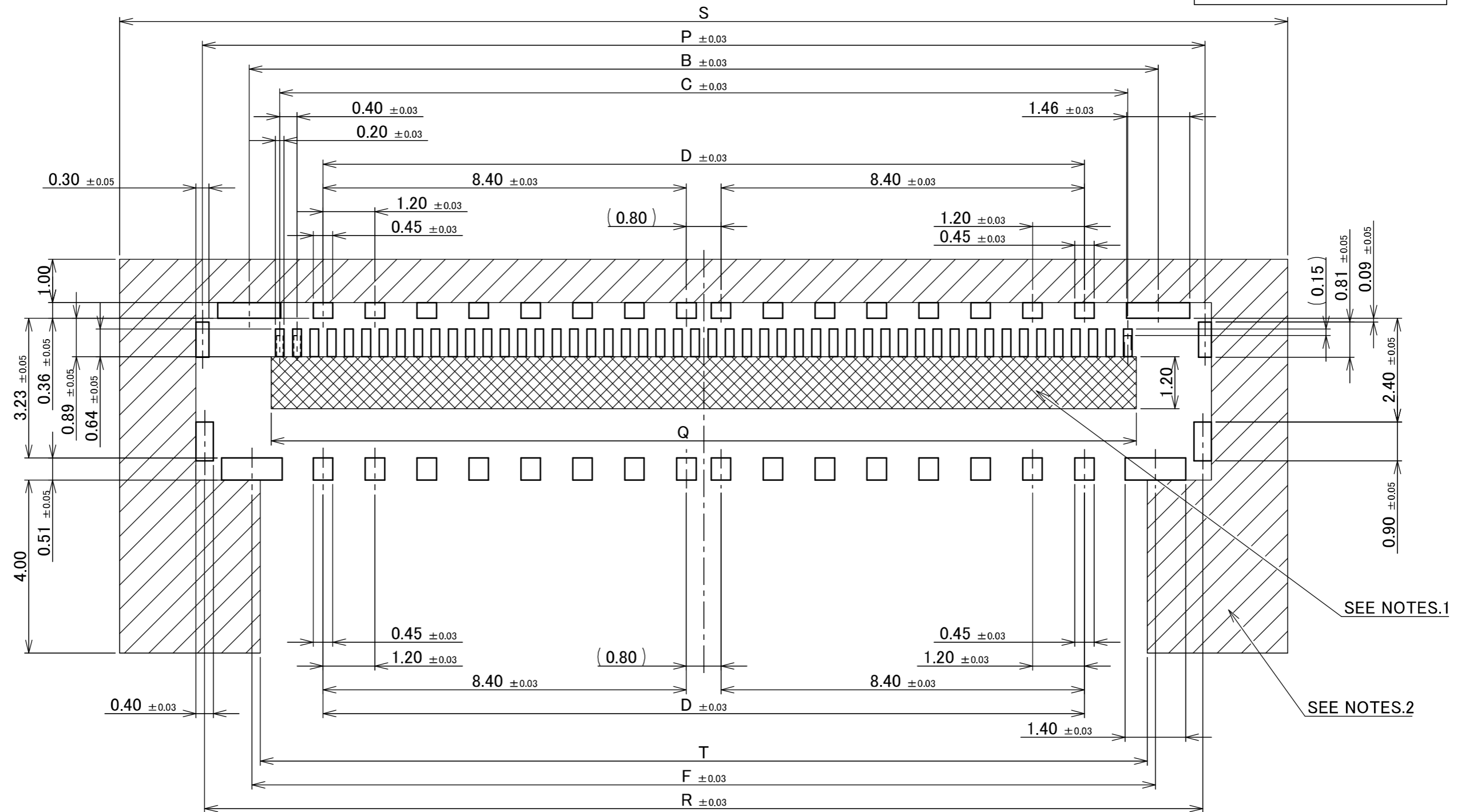
- NOTES.
 1. SOLDER RESIST MUST BE APPLIED TO THIS AREA.
 2. DO NOT MOUNT ANOTHER COMPONENT IN THIS AREA.

PATENT PENDING

ANGLE	±2°	6 OVER 30 MAX.	±0.3	PROJECTION ⊕	SERIES No. R5	CUSTOMER COPY		
6 MAX.	±0.2	30 OVER 120 MAX.	±0.5					
GENERAL TOLERANCE.				TITLE CABLINÉ® -UM RECEPTACLE ASSEMBLY	SCALE 10:1	I-PEX		
DWG.	DATE							
CHK.								
APP.								
DWG. No.	20879			SIZE A3	SHEET 6/17	REV. 15		

PART No.	Pos.	B	C	D	F	P	Q	R	S	T
20879-050E-#1	50	21.01	19.60	17.60	20.88	23.17	20.00	23.07	27.00	20.50

#1 TYPE



#1 TYPE 50P RECOMMENDED PCB LAYOUT
(S=10/1)

- NOTES.**
 1. SOLDER RESIST MUST BE APPLIED TO THIS AREA.
 2. DO NOT MOUNT ANOTHER COMPONENT IN THIS AREA.

PATENT PENDING

ANGLE	±2°	6 OVER 30 MAX.	±0.3	PROJECTION ⊕	SERIES No. R5	CUSTOMER COPY		
6 MAX.	±0.2	30 OVER 120 MAX.	±0.5					
GENERAL TOLERANCE.				TITLE CABLIN [®] -UM RECEPTACLE ASSEMBLY	SCALE 10:1 UNIT mm	I-PEX		
DWG.	DATE							
CHK.								
APP.								
				DWG. No.	20879	SIZE A3	SHEET 7/17	REV. 15

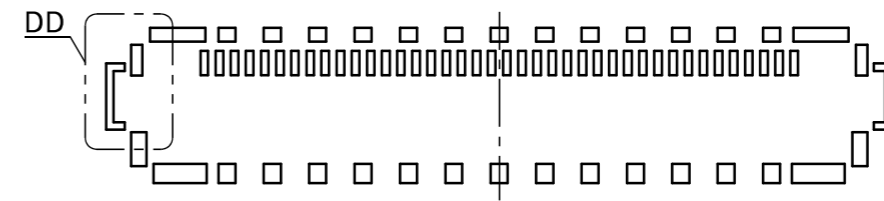
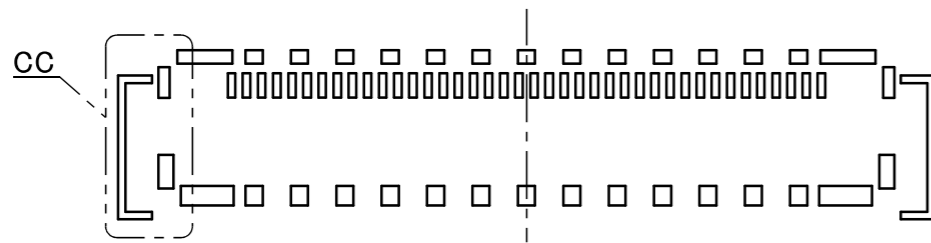
PART No.	Pos.
20879-030E-#1	30
20879-040E-#1	40
20879-050E-#1	50
20879-060E-#1	60

PATENT PENDING

#1 TYPE

With LOCK COVER

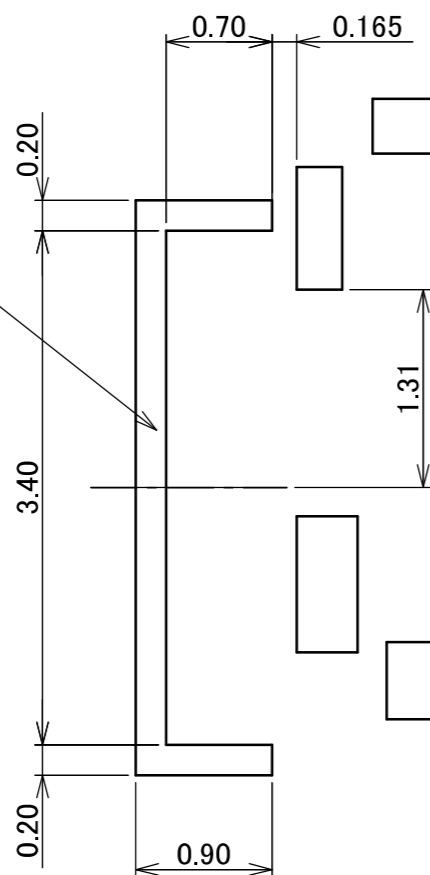
Without LOCK COVER & With PULL TAPE HOLDER



RECOMMENDED SILK PRINT For With LOCK COVER
(S = 5 : 1)

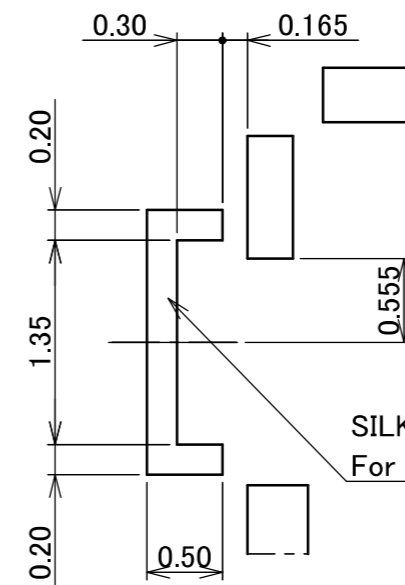
RECOMMENDED SILK PRINT For Without LOCK COVER
(S = 5 : 1)

SILK PRINT
For PLUG INSERTION CHECK



DETAIL CC
(S = 20 : 1)

SILK PRINT
For PLUG INSERTION CHECK



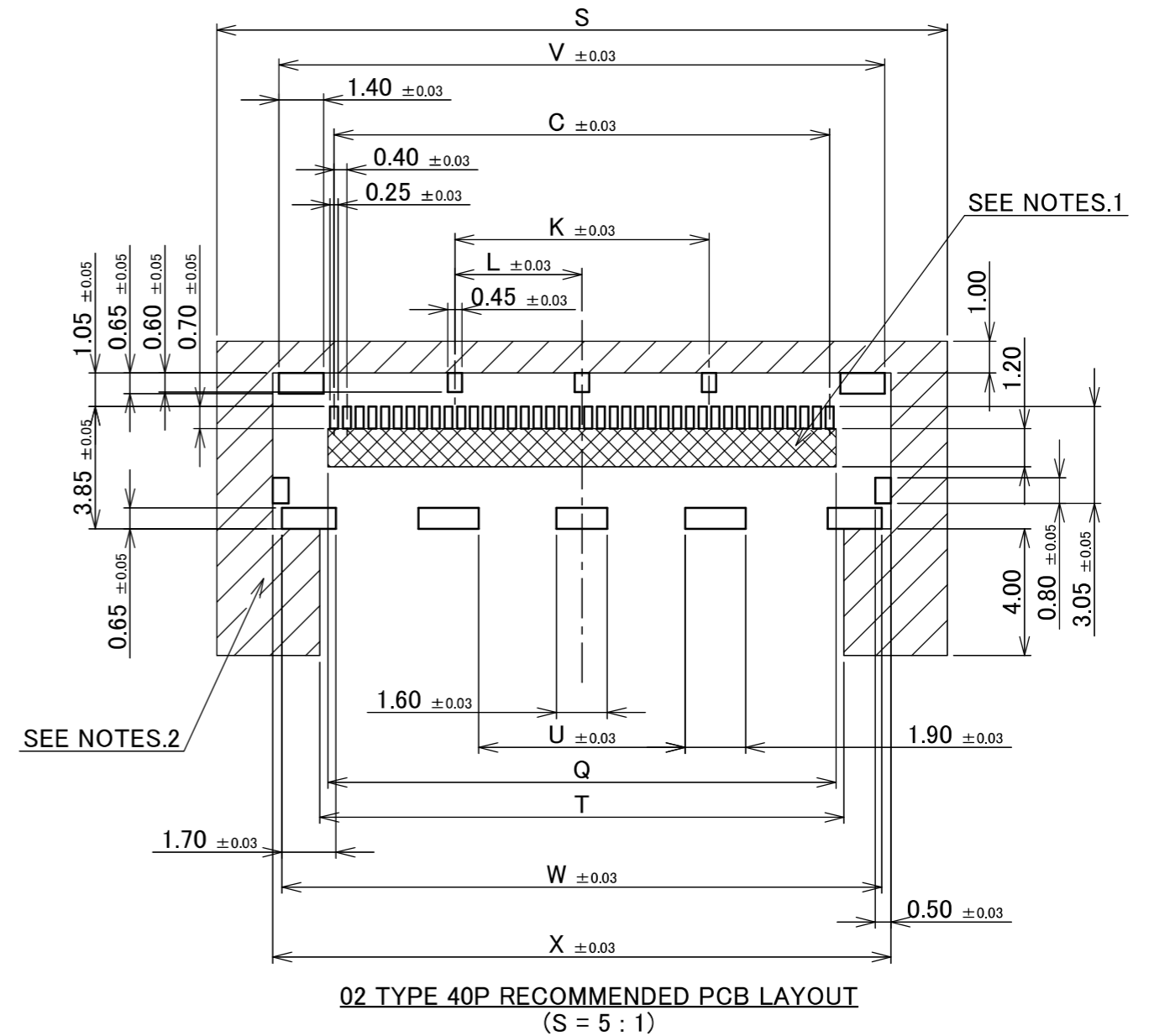
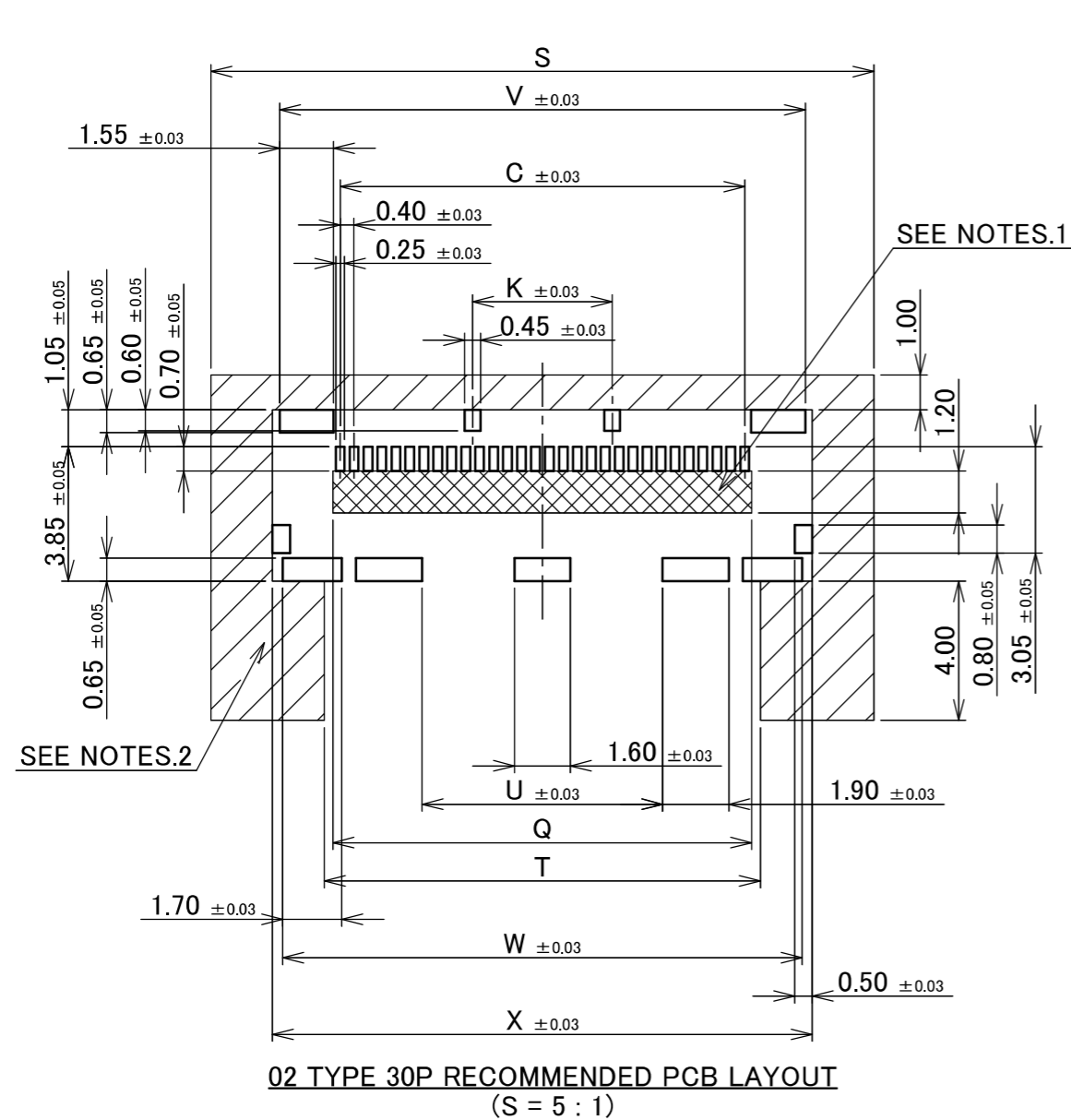
DETAIL DD
(S = 20 : 1)

ANGLE	±2°	6 OVER 30 MAX.	±0.3	PROJECTION ⊕	SERIES No. R5	CUSTOMER COPY		
6 MAX.	±0.2	30 OVER 120 MAX.	±0.5					
GENERAL TOLERANCE.				TITLE CABLIN [®] -UM RECEPTACLE ASSEMBLY	SCALE 5:1 UNIT mm	I-PEX		
DWG.	DATE							
CHK.								
APP.								
				DWG. No.	20879	SIZE A3	SHEET 8/17	REV. 15

PART No.	Pos.	C	K	L	Q	S	T	U	V	W	X
20879-030E-02	30	11.60	4.00	-	12.00	19.00	12.50	6.89	15.07	14.89	15.47
20879-040E-02	40	15.60	8.00	4.00	16.00	23.00	16.50	6.50	19.07	18.89	19.47
20879-050E-02	50	19.60	14.40	3.60	20.00	27.00	20.50	8.50	23.07	22.89	23.47
20879-060E-02	60	23.60	17.60	-	24.00	31.00	24.50	10.50	27.07	26.89	27.47

PATENT PENDING

02 TYPE



NOTES.

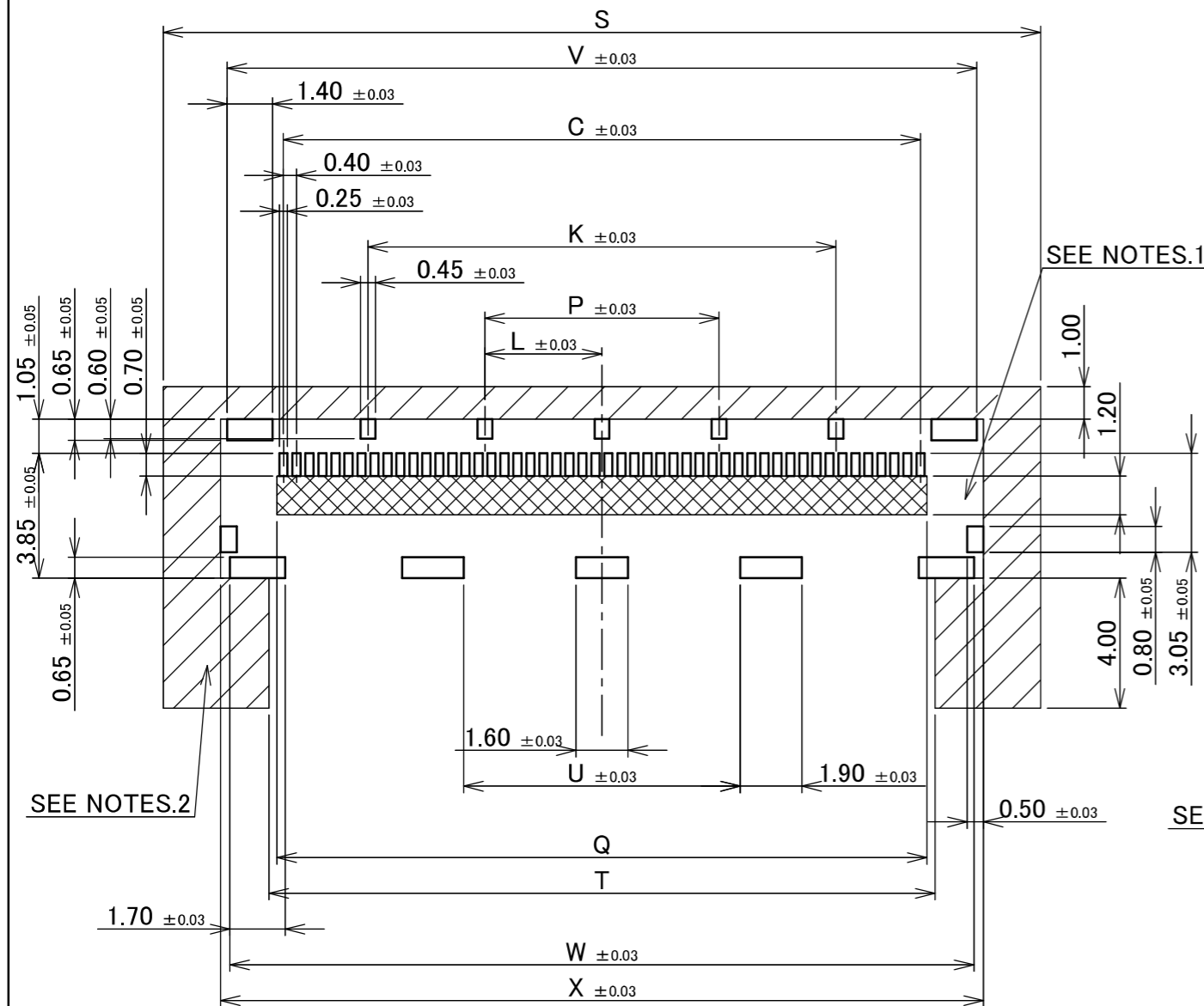
1. SOLDER RESIST MUST BE APPLIED TO THIS AREA.
2. DO NOT MOUNT ANOTHER COMPONENT IN THIS AREA.

ANGLE	±2°	6 OVER 30 MAX.	±0.3	PROJECTION ⊕	SERIES No. R5	CUSTOMER COPY		
6 MAX.	±0.2	30 OVER 120 MAX.	±0.5					
GENERAL TOLERANCE.				TITLE CABLINER [®] -UM RECEPTACLE ASSEMBLY	SCALE 5:1 UNIT mm	I-PEX		
DWG.	DATE							
CHK.								
APP.								
				DWG. No.	20879	SIZE	SHEET	REV.
						A3	9/17	15

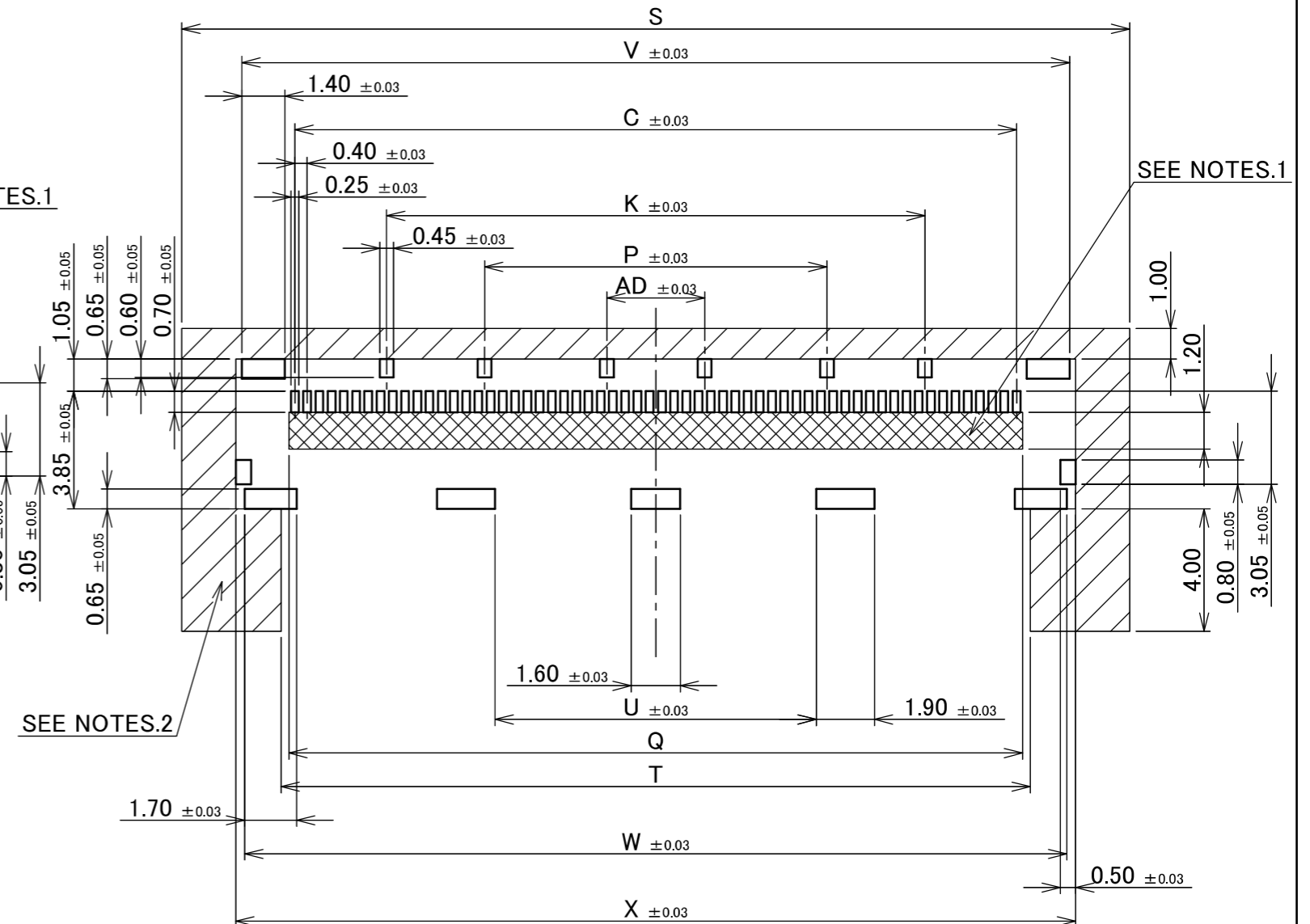
PART No.	Pos.	C	K	L	P	Q	S	T	U	V	W	X	AD
20879-030E-02	30	11.60	4.00	-	-	12.00	19.00	12.50	6.89	15.07	14.89	15.47	-
20879-040E-02	40	15.60	8.00	4.00	-	16.00	23.00	16.50	6.50	19.07	18.89	19.47	-
20879-050E-02	50	19.60	14.40	3.60	7.20	20.00	27.00	20.50	8.50	23.07	22.89	23.47	-
20879-060E-02	60	23.60	17.60	-	11.20	24.00	31.00	24.50	10.50	27.07	26.89	27.47	3.20

PATENT PENDING

02 TYPE



02TYPE 50P RECOMMENDED PCB LAYOUT
(S = 5 : 1)



02 TYPE 60P RECOMMENDED PCB LAYOUT
(S = 5 : 1)

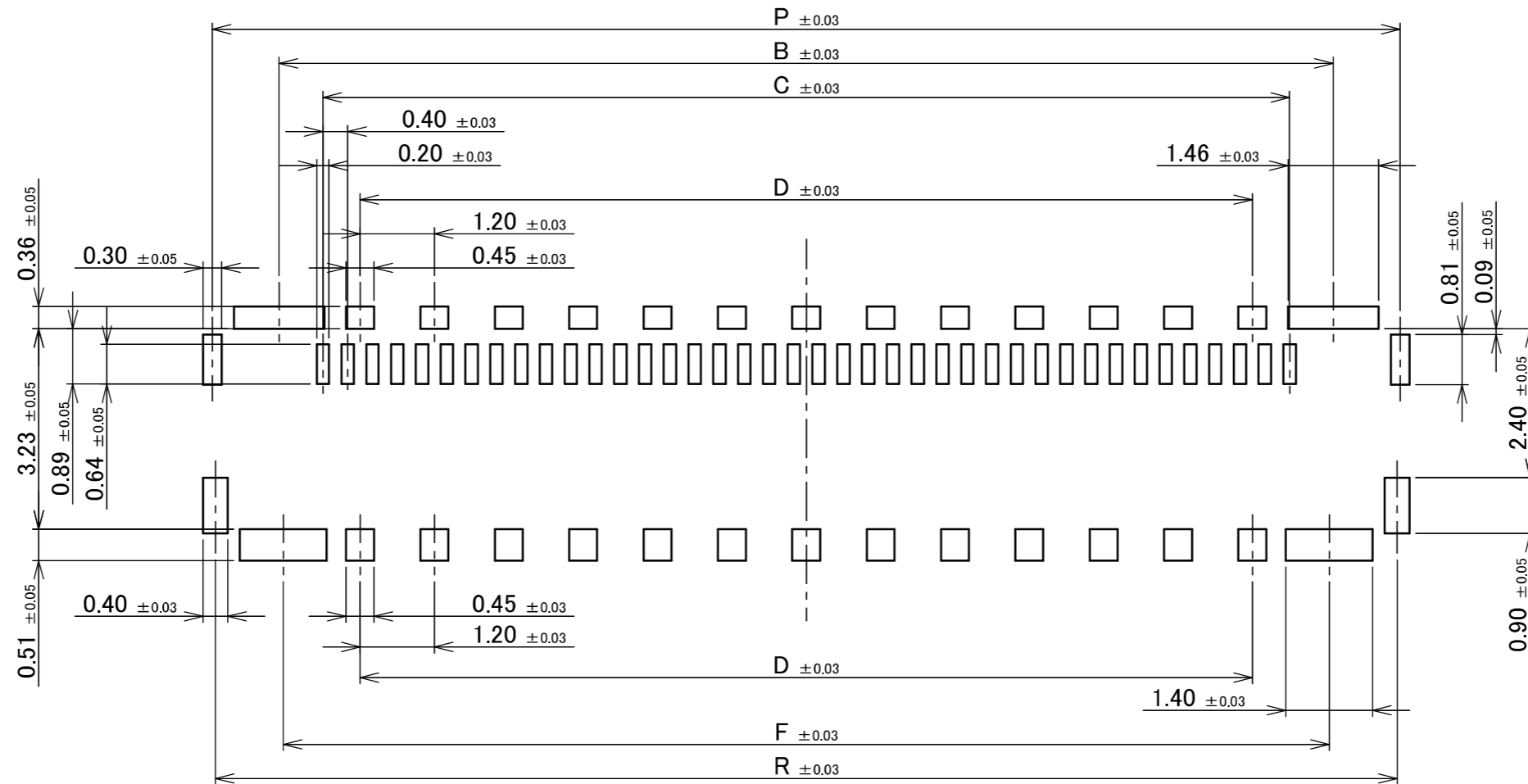
NOTES.

1. SOLDER RESIST MUST BE APPLIED TO THIS AREA.
2. DO NOT MOUNT ANOTHER COMPONENT IN THIS AREA.

ANGLE	±2°	6 OVER 30 MAX.	±0.3	PROJECTION ⊕	SERIES No. R5	CUSTOMER COPY		
	6 MAX.	±0.2	30 OVER 120 MAX.					
GENERAL TOLERANCE.				TITLE CABLIN® -UM RECEPTACLE ASSEMBLY	SCALE 5:1 UNIT mm	I-PEX		
DWG.	DATE							
CHK.								
APP.								
				DWG. No.	20879	SIZE	SHEET	REV.
						A3	10/17	15

PART No.	Pos.	B	C	D	F	P	R
20879-030E-#1	30	13.01	11.60	9.60	12.88	15.17	15.07
20879-040E-#1	40	17.01	15.60	14.40	16.88	19.17	19.07
20879-060E-#1	60	25.01	23.60	21.60	24.88	27.17	27.07

#1 TYPE



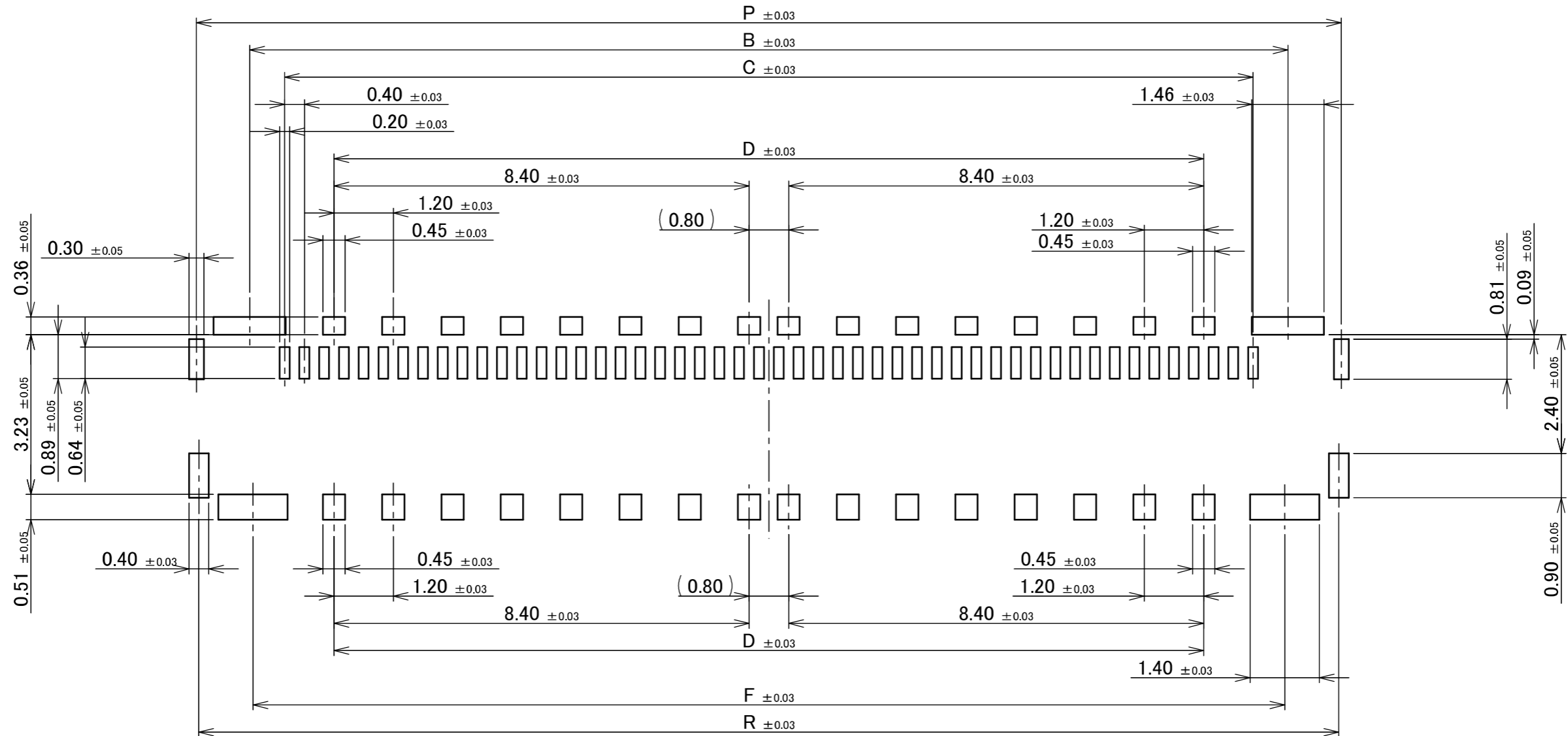
#1 TYPE 30P, 40P, 60P RECOMMENDED METAL MASK LAYOUT (S = 10 : 1)
 ※ METAL MASK THICKNESS : t = 0.10

PATENT PENDING

ANGLE	±2°	6 OVER 30 MAX.	±0.3	PROJECTION 	SERIES No. R5	CUSTOMER COPY		
6 MAX.	±0.2	30 OVER 120 MAX.	±0.5					
GENERAL TOLERANCE.				TITLE CABLINÉ® -UM RECEPTACLE ASSEMBLY	SCALE 10:1 UNIT mm	I-PEX		
DWG.	DATE							
CHK.								
APP.								
				DWG. No.	20879	SIZE A3	SHEET 11/17	REV. 15

PART No.	Pos.	B	C	D	F	P	R
20879-050E-#1	50	21.01	19.60	17.60	20.88	23.17	23.07

#1 TYPE



#1 TYPE 50P RECOMMENDED METAL MASK LAYOUT (S = 10 : 1)
 ※ METAL MASK THICKNESS : t = 0.10

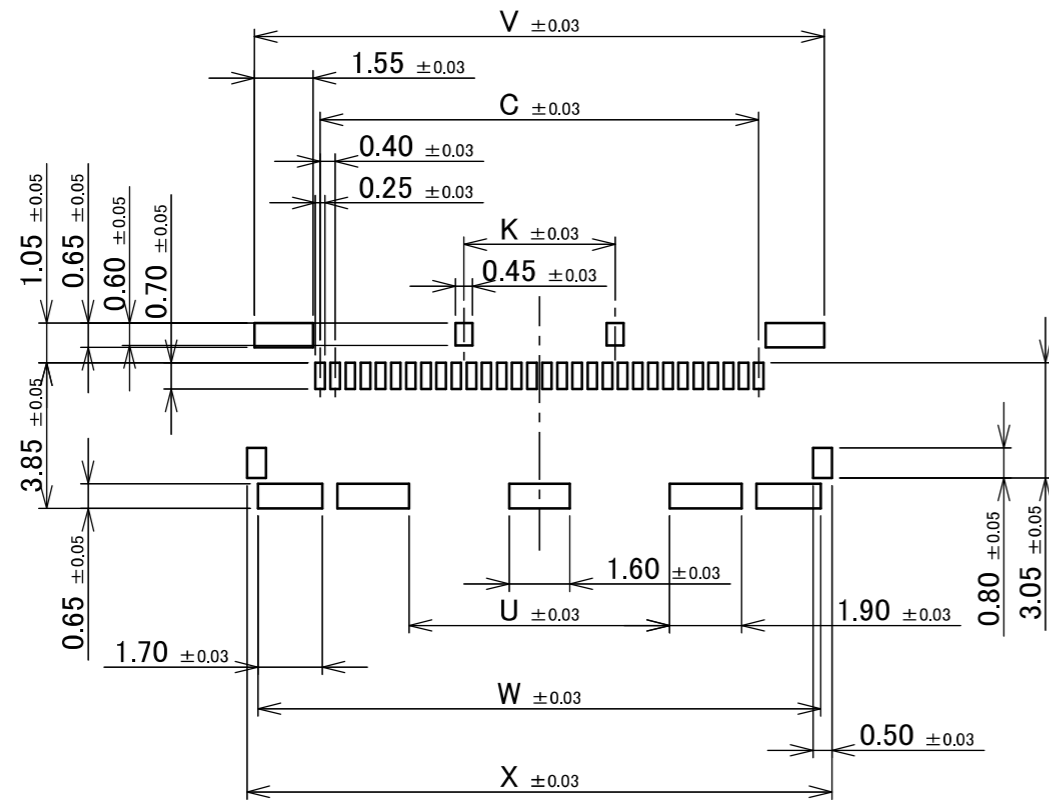
PATENT PENDING

ANGLE	±2°	6 OVER 30 MAX.	±0.3	PROJECTION 	SERIES No. R5	CUSTOMER COPY		
6 MAX.	±0.2	30 OVER 120 MAX.	±0.5					
GENERAL TOLERANCE.				TITLE CABLIN [®] -UM RECEPTACLE ASSEMBLY	SCALE 10:1	I-PEX		
DWG.	DATE							
CHK.								
APP.								
				DWG. No.	20879	SIZE	SHEET	REV.
						A3	12/17	15

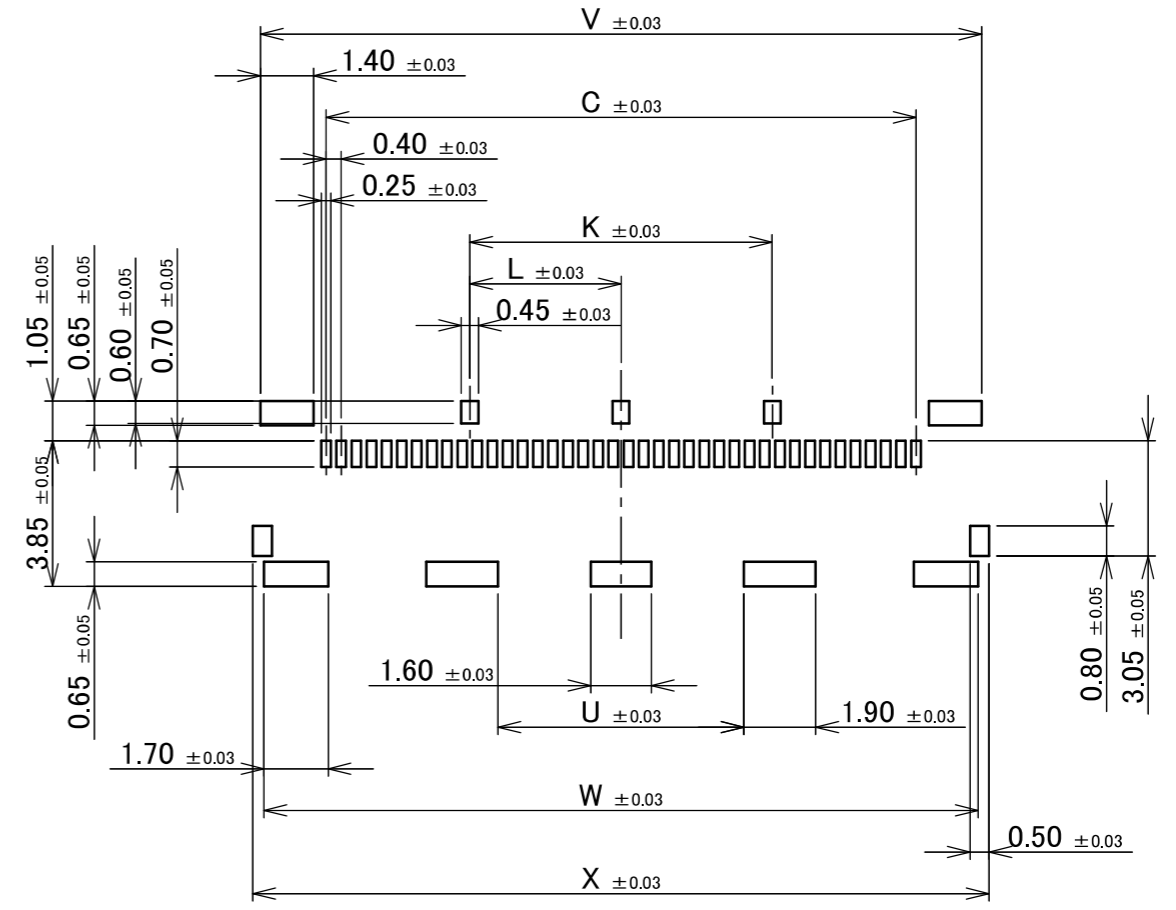
PART No.	Pos.	C	K	L	U	V	W	X
20879-030E-02	30	11.60	4.00	-	6.89	15.07	14.89	15.47
20879-040E-02	40	15.60	8.00	4.00	6.50	19.07	18.89	19.47
20879-050E-02	50	19.60	14.40	3.60	8.50	23.07	22.89	23.47
20879-060E-02	60	23.60	17.60	-	10.50	27.07	26.89	27.47

PATENT PENDING

02 TYPE



02 TYPE 30P RECOMMENDED METAL MASK LAYOUT (S = 5 : 1)
 ※ METAL MASK THICKNESS : t = 0.12



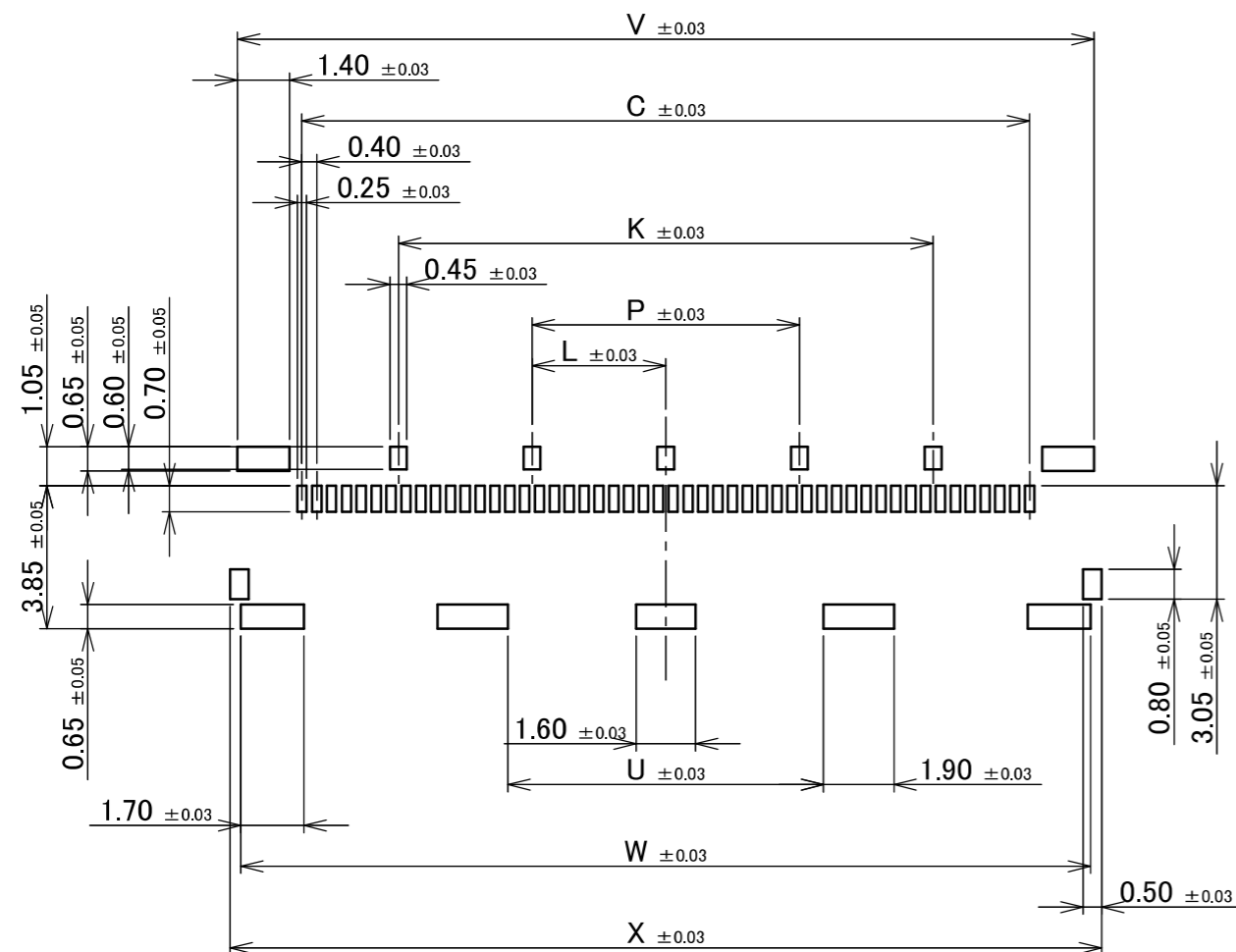
02 TYPE 40P RECOMMENDED METAL MASK LAYOUT (S = 5 : 1)
 ※ METAL MASK THICKNESS : t = 0.12

ANGLE	±2°	6 OVER 30 MAX.	±0.3	PROJECTION 	SERIES No. R5	CUSTOMER COPY		
6 MAX.	±0.2	30 OVER 120 MAX.	±0.5			TITLE CABLIN [®] -UM RECEPTACLE ASSEMBLY	SCALE 5:1	I-PEX
GENERAL TOLERANCE.				DWG. No. 20879	UNIT mm	SIZE A3	SHEET 13/17	
DWG.	DATE							
CHK.								
APP.								

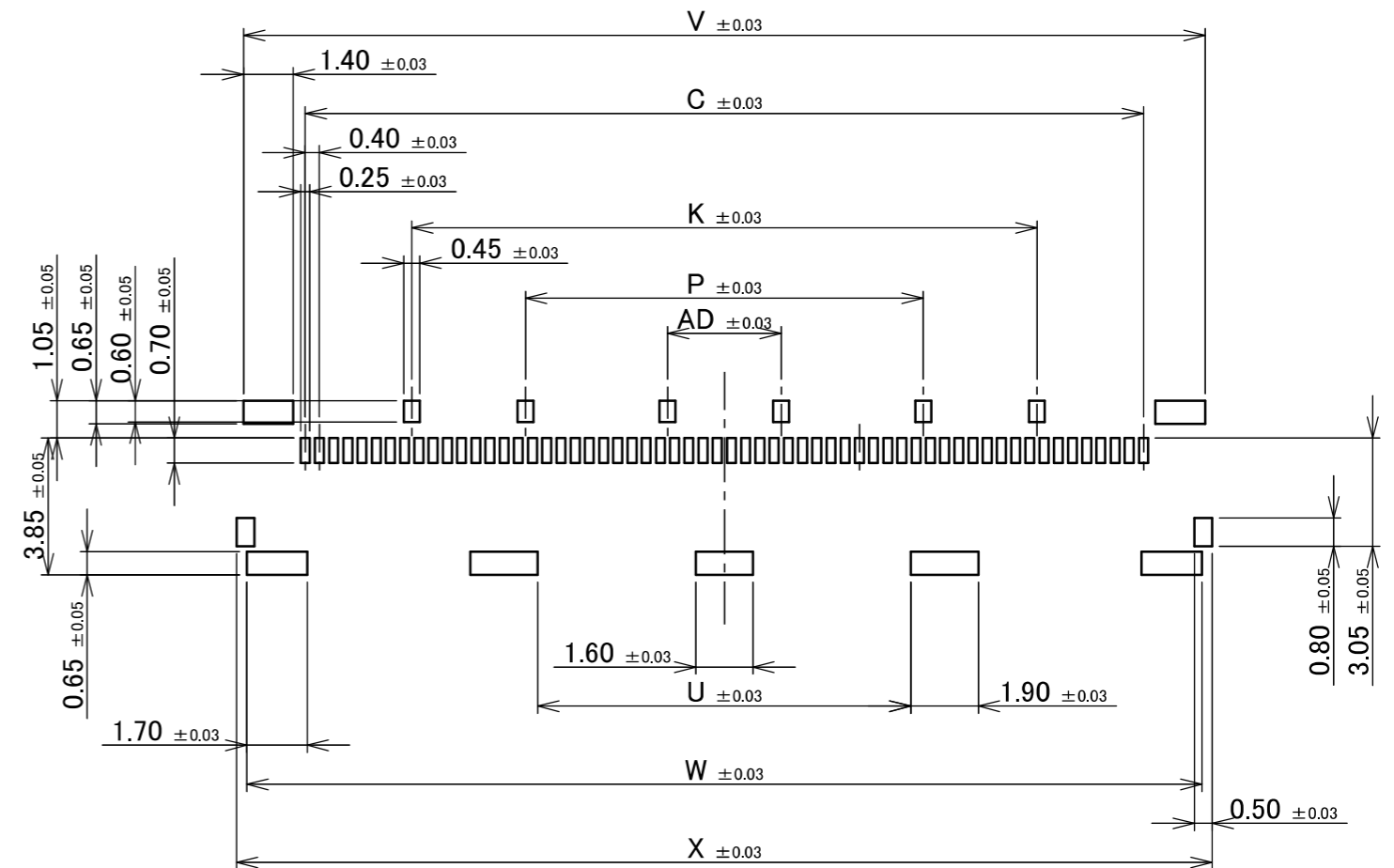
PART No.	Pos.	C	K	L	P	U	V	W	X	AD
20879-030E-02	30	11.60	4.00	-	-	6.89	15.07	14.89	15.47	-
20879-040E-02	40	15.60	8.00	4.00	-	6.50	19.07	18.89	19.47	-
20879-050E-02	50	19.60	14.40	3.60	7.20	8.50	23.07	22.89	23.47	-
20879-060E-02	60	23.60	17.60	-	11.20	10.50	27.07	26.89	27.47	3.20

PATENT PENDING

02 TYPE



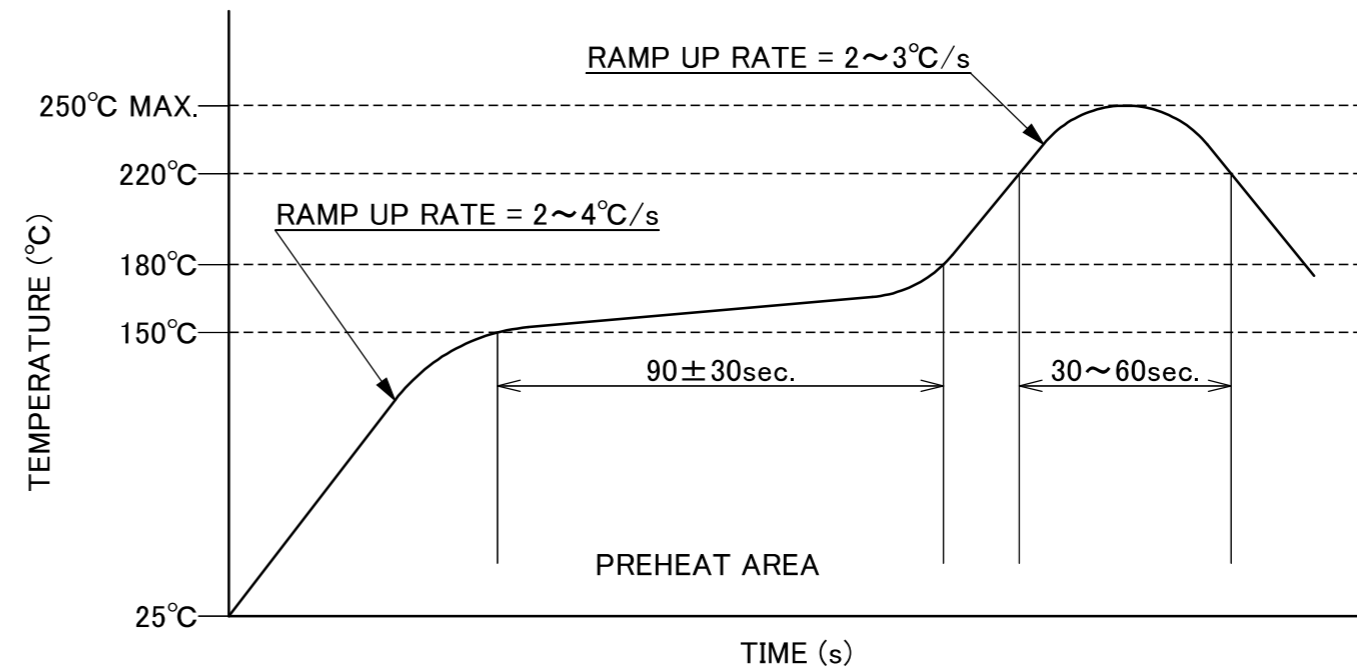
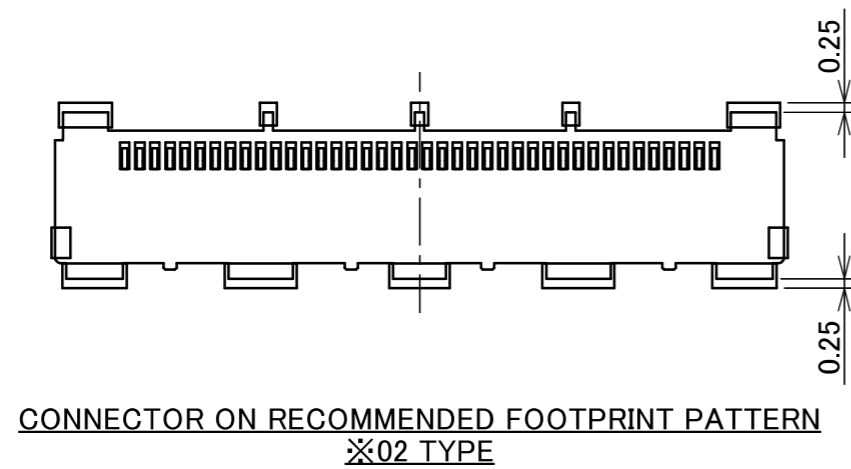
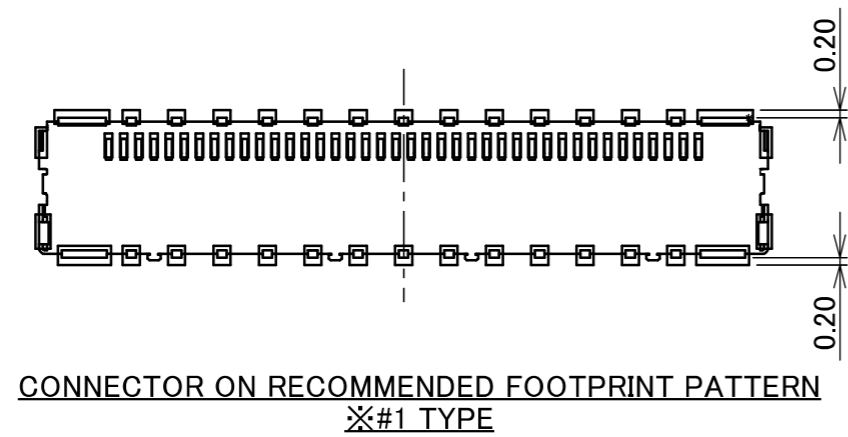
02 TYPE 50P RECOMMENDED METAL MASK LAYOUT (S = 5 : 1)
 ※ METAL MASK THICKNESS : t = 0.12



02 TYPE 60P RECOMMENDED METAL MASK LAYOUT (S = 5 : 1)
 ※ METAL MASK THICKNESS : t = 0.12

ANGLE	±2°	6 OVER 30 MAX.	±0.3	PROJECTION 	SERIES No. R5	CUSTOMER COPY		
6 MAX.	±0.2	30 OVER 120 MAX.	±0.5					
GENERAL TOLERANCE.				TITLE CABLINÉ® -UM RECEPTACLE ASSEMBLY	SCALE 5:1	UNIT mm		
DWG.	DATE							
CHK.								
APP.								
				DWG. No.	20879	SIZE	SHEET	REV.
						A3	14/17	15

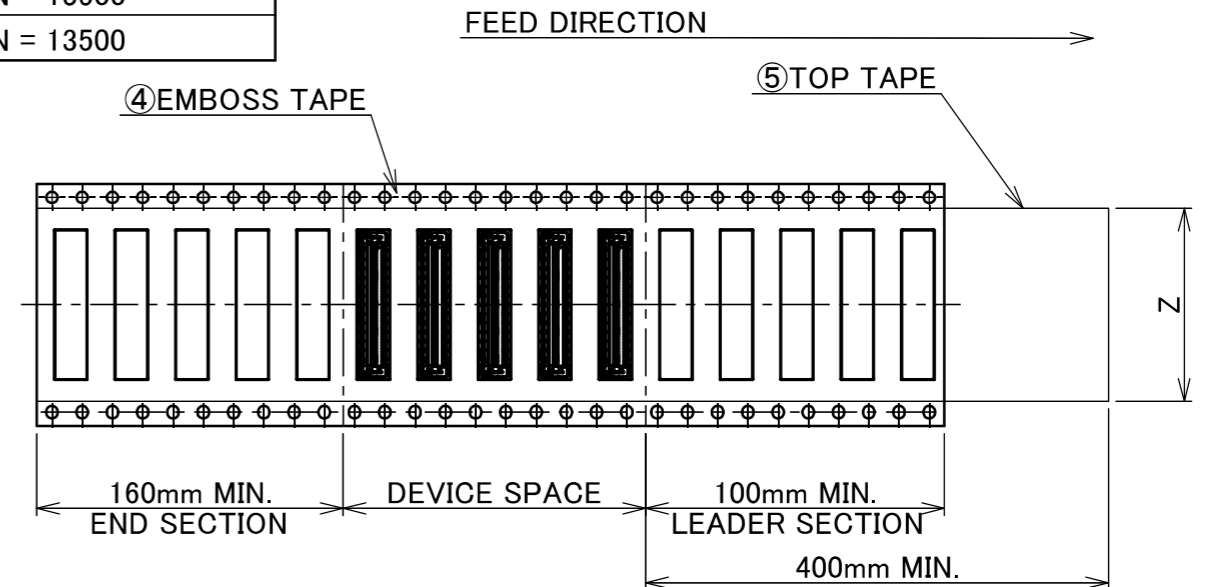
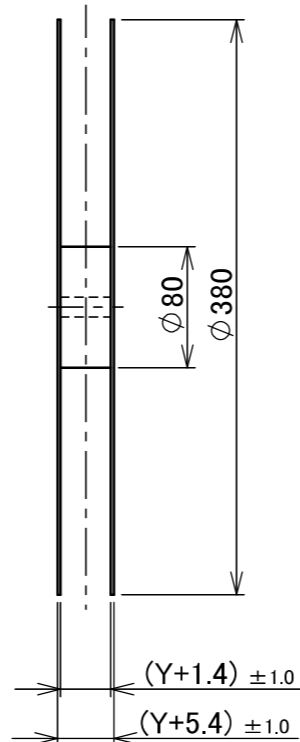
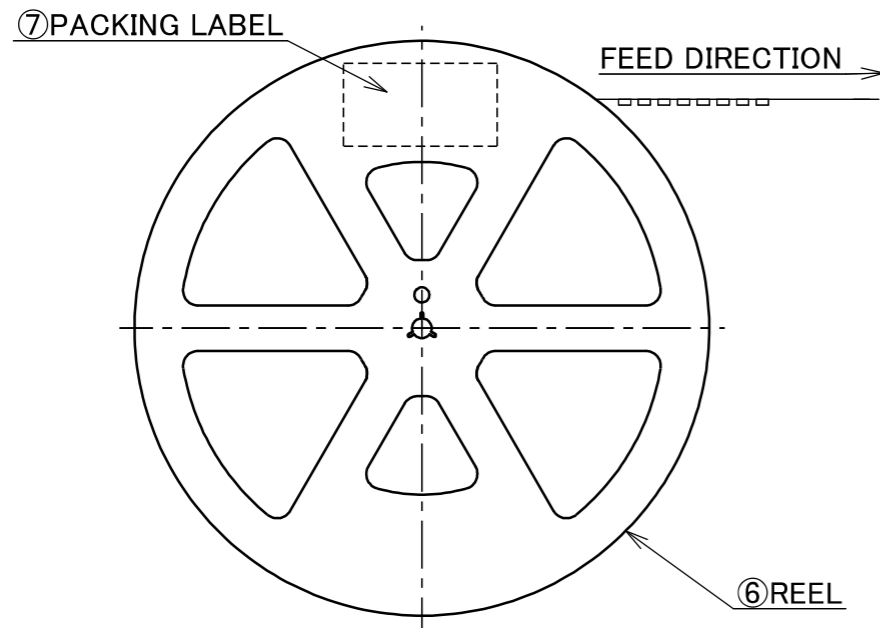
PATENT PENDING



ANGLE	±2°	6 OVER 30 MAX.	±0.3	PROJECTION	SERIES No.	CUSTOMER COPY			
					R5				
				TITLE CABLINE® -UM RECEPTACLE ASSEMBLY			SCALE	I-PEX	
GENERAL TOLERANCE.							UNIT		
DWG.	DATE			mm					
CHK.				SIZE	SHEET	REV.			
APP.				DWG. No.	20879	A3	15/17	15	

PART NO.	Y	Z	AA	AB	AC	QTY. PER EMBOSS REEL (PIECES / REEL)	QTY. PER PACKING CARTON (REELS / CARTON)
20879-030E-#1	32.00	25.50	14.20	28.40	15.67	4500 / REEL	4 / CARTON = 18000
20879-040E-#1	32.00	25.50	14.20	28.40	19.67	4500 / REEL	4 / CARTON = 18000
20879-050E-#1	44.00	37.50	20.20	40.40	23.67	4500 / REEL	3 / CARTON = 13500
20879-060E-#1	44.00	37.50	20.20	40.40	27.67	4500 / REEL	3 / CARTON = 13500

#1 TYPE



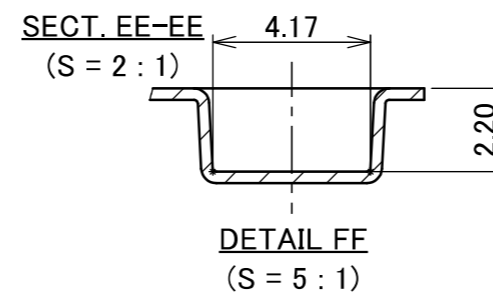
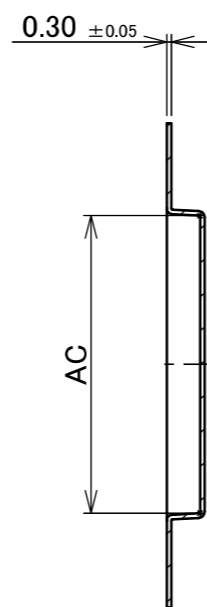
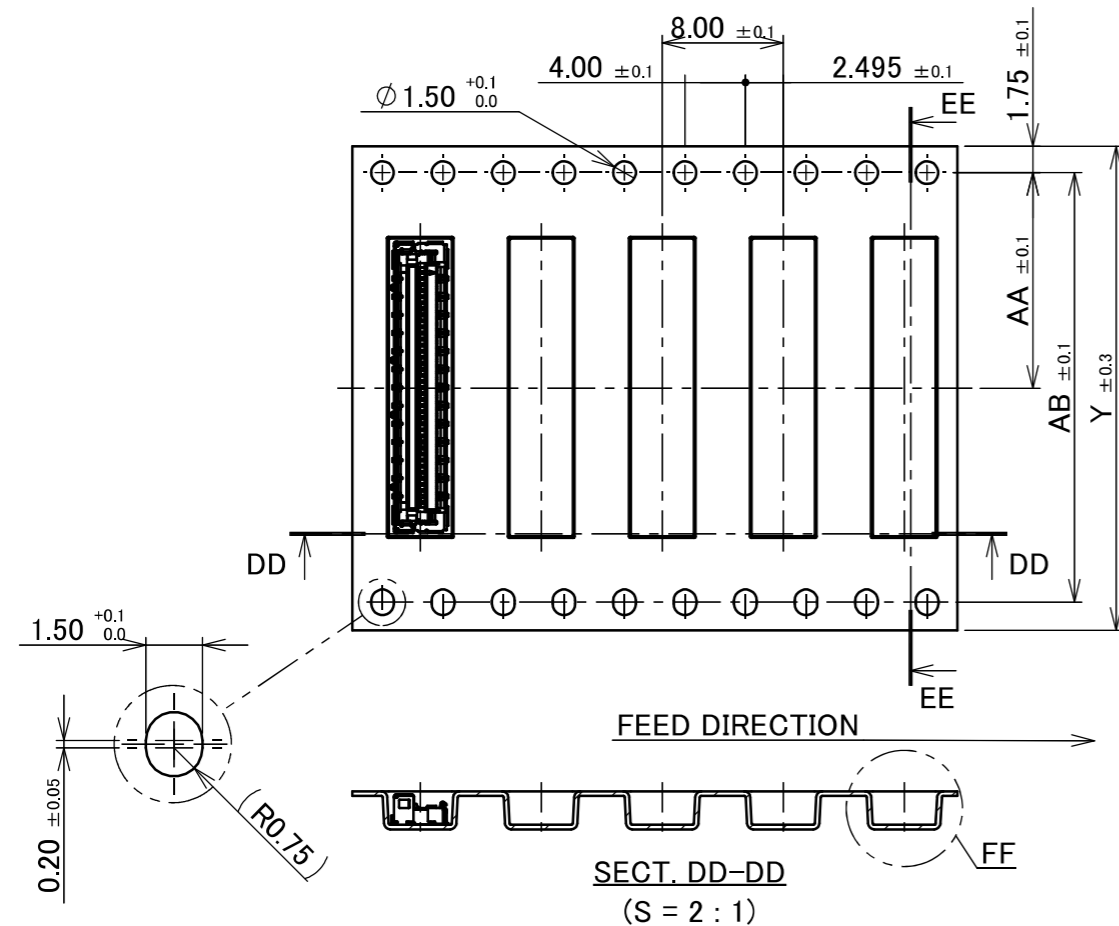
PATENT PENDING

NOTES.

- TAPING SPECIFICATION FOLLOWS JIS C 0806 (IEC 60286-3).
- MAKE EMPTY SECTION OF LEADER AND END ON EACH END OF THE TAPE.
- TOP TAPE SHALL NOT STICK OUT FROM EMBOSS TAPE.
- TOP TAPE SHALL NOT COVER FEED HOLE.

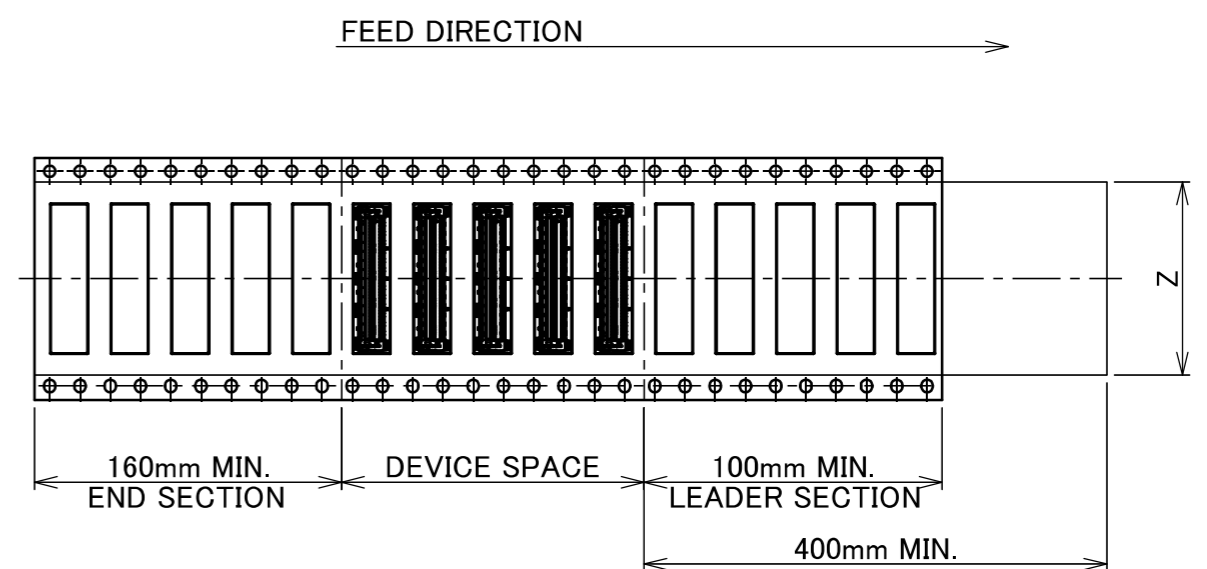
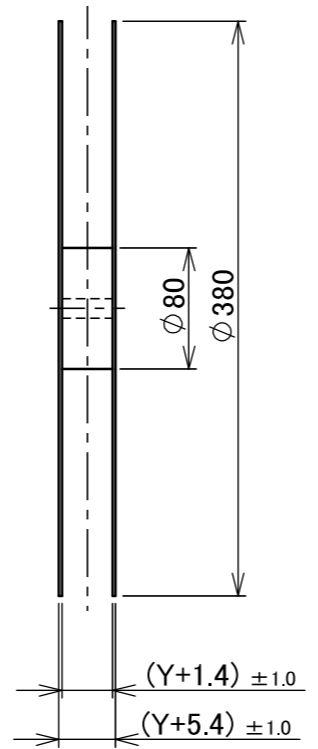
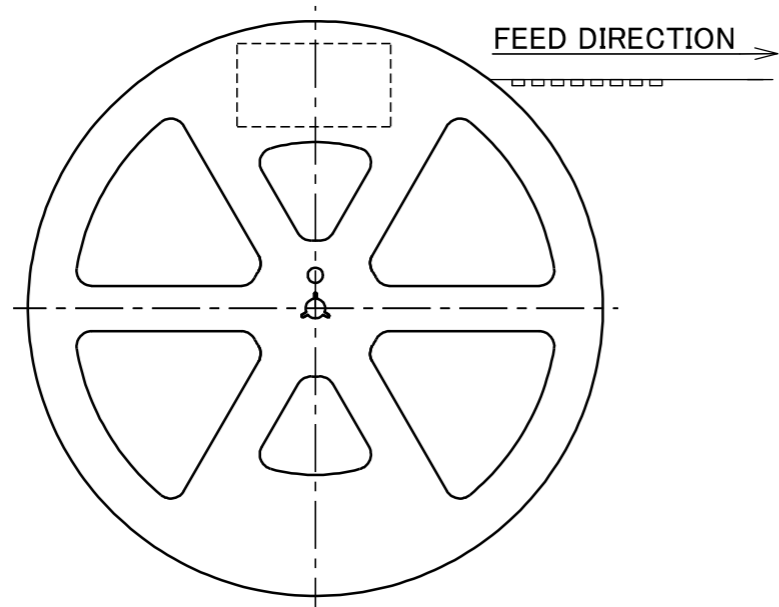
NO.	DISCRIPTION	MATERIAL	FINISH , REMARKS
7	PACKING LABEL	-	-
6	REEL	PS	ANTI-STATIC TYPE BLACK
5	TOP TAPE	PET $t=0.062$ TRANSPARENCY	ANTI-STATIC TYPE
4	EMBOSS TAPE	PS $t=0.3$ TRANSPARENCY	ANTI-STATIC TYPE

ANGLE	±2°	6 OVER 30 MAX.	±0.3	PROJECTION	SERIES No.	CUSTOMER COPY			
6 MAX.	±0.2	30 OVER 120 MAX.	±0.5		R5	TITLE			
GENERAL TOLERANCE.				TITLE		SCALE	I-PEX		
DWG.	DATE		CABLIN [®] -UM RECEPTACLE ASSEMBLY		1:X				
CHK.			DWG. No.		UNIT	mm			
APP.			20879		SIZE	SHEET	REV.		
						A3	16/17	15	



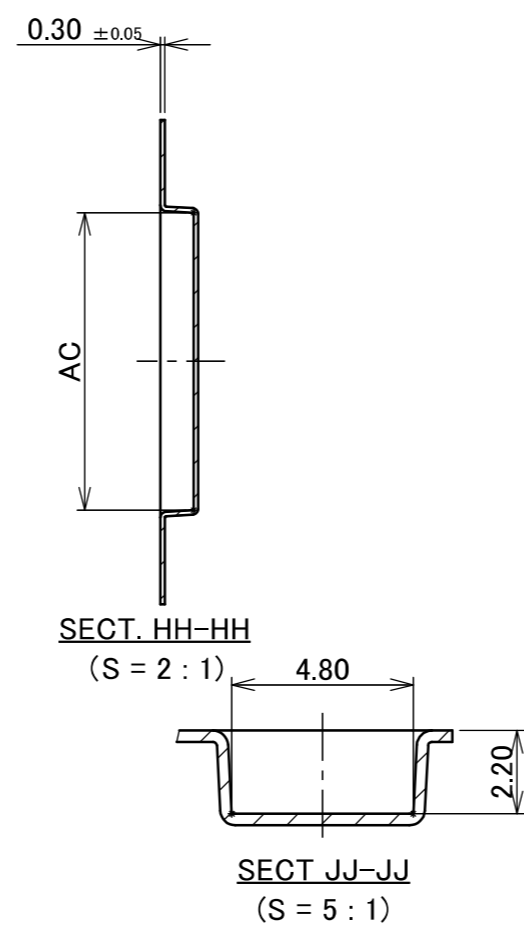
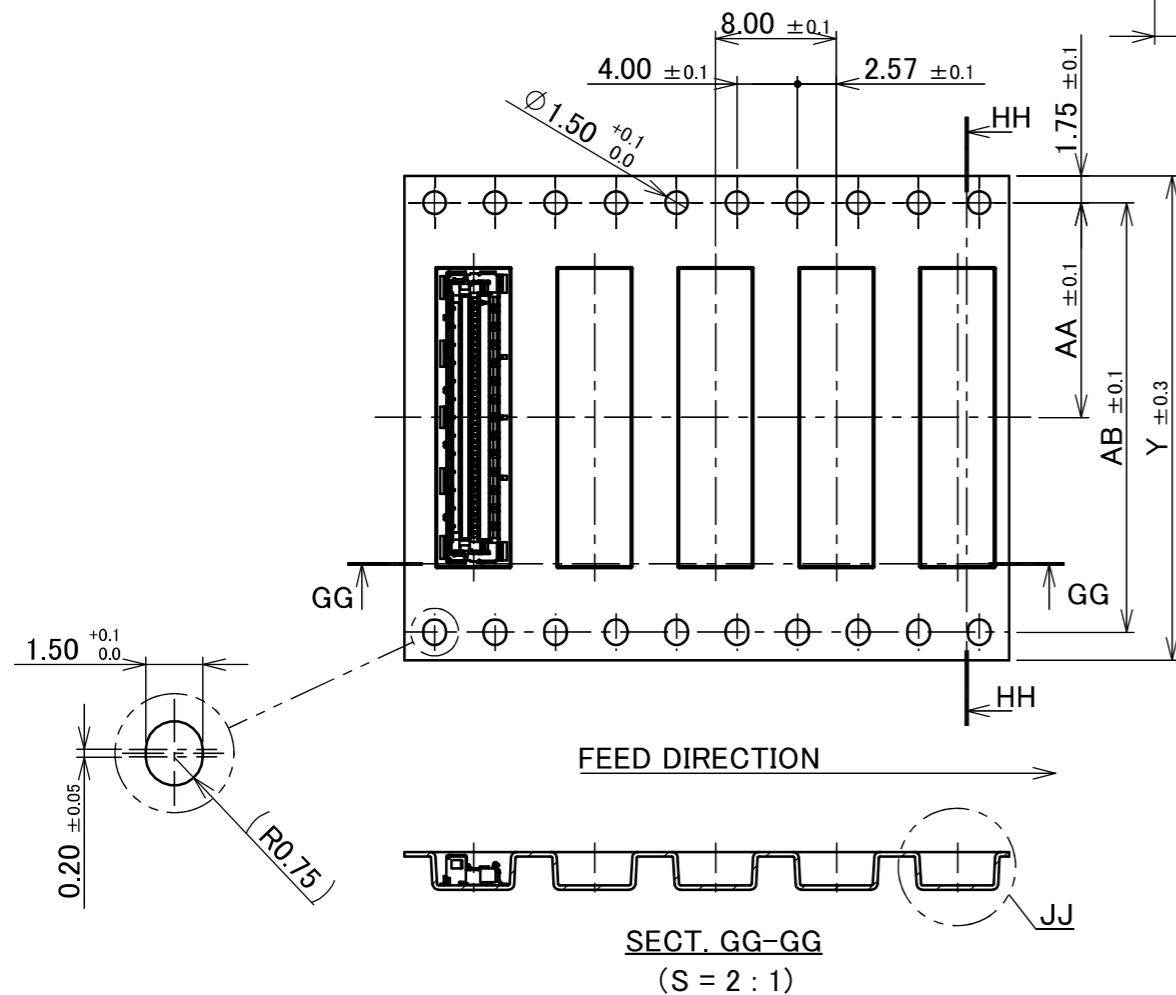
PART NO.	Y	Z	AA	AB	AC	QTY. PER EMBOSS REEL (PIECES / REEL)	QTY. PER PACKING CARTON (REELS / CARTON)
20879-030E-02	32.00	25.50	14.20	28.40	15.67	4500 / REEL	4 / CARTON = 18000
20879-040E-02	32.00	25.50	14.20	28.40	19.67	4500 / REEL	4 / CARTON = 18000
20879-050E-02	44.00	37.50	20.20	40.40	23.67	4500 / REEL	3 / CARTON = 13500
20879-060E-02	44.00	37.50	20.20	40.40	27.67	4500 / REEL	3 / CARTON = 13500

02 TYPE



PATENT PENDING

- NOTES.
3. TAPING SPECIFICATION FOLLOWS JIS C 0806 (IEC 60286-3).
 4. MAKE EMPTY SECTION OF LEADER AND END ON EACH END OF THE TAPE.
 5. TOP TAPE SHALL NOT STICK OUT FROM EMBOSS TAPE.
 6. TOP TAPE SHALL NOT COVER FEED HOLE.



ANGLE	$\pm 2^\circ$	6 OVER 30 MAX.	± 0.3	PROJECTION	SERIES No.	CUSTOMER COPY		
6 MAX.	± 0.2	30 OVER 120 MAX.	± 0.5		R5	I-PEX		
GENERAL TOLERANCE.				TITLE	SCALE	1:X		
DWG.	DATE			CABLIN [®] -UM	UNIT	mm		
CHK.				RECEPTACLE ASSEMBLY	SIZE	SHEET	REV.	
APP.				DWG. No.	20879	A3	17/17	15