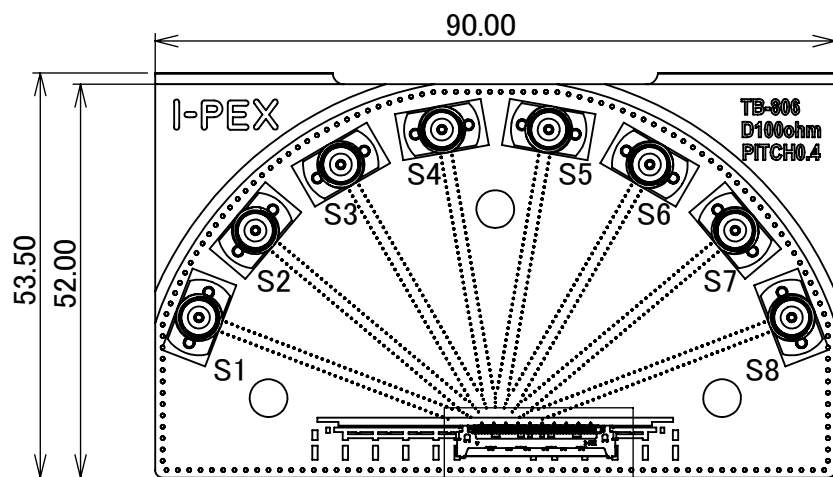


PART NO.	STRUCTURE
91568-0**B-001	MAIN BOARD A ASSEMBLY : 1PC. MAIN BOARD B ASSEMBLY : 1PC. 2xTHRU BOARD ASSEMBLY : 1PC.

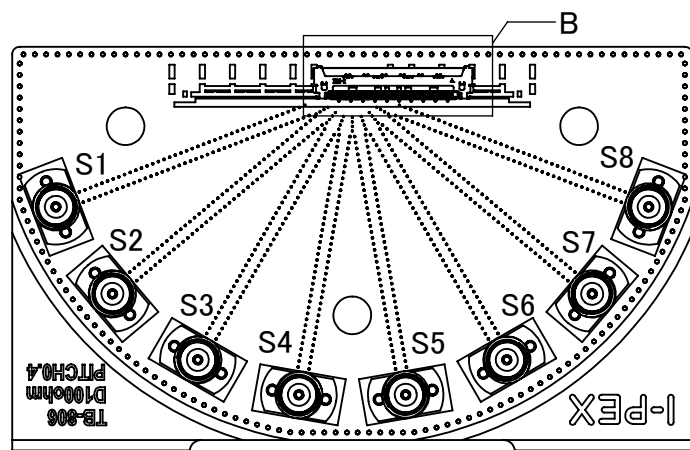
91568-0**B-001

Pos. 20, 30, 40, 50

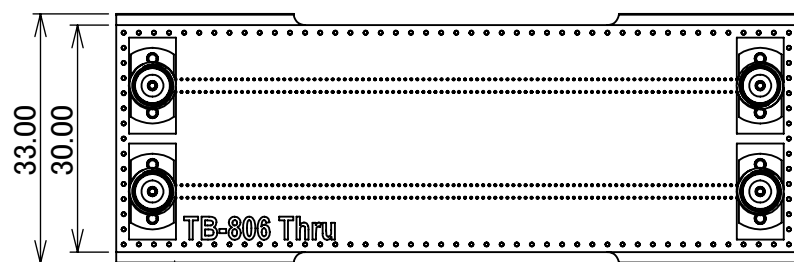
MAIN BOARD A	
PIN POS.	ASSIGNMENT
1	GND
2	S1
3	S2
4	GND
5	S3
6	S4
7	GND
8	S5
9	S6
10	GND
11	S7
12	S8
13	GND



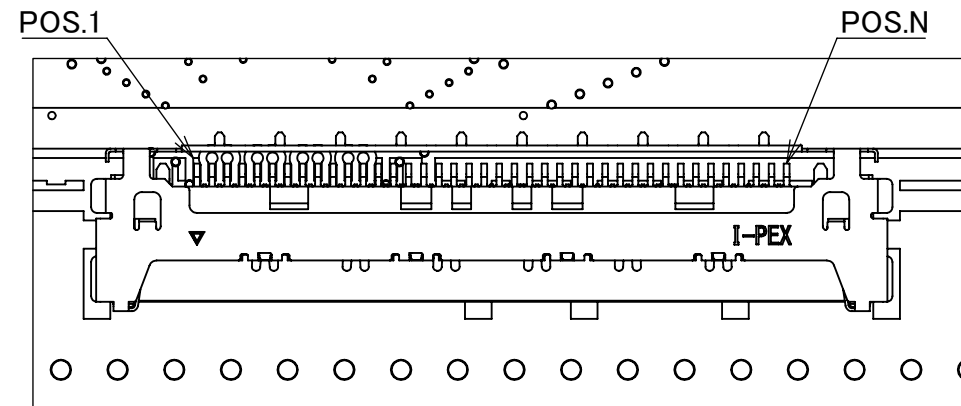
MAIN BOARD A



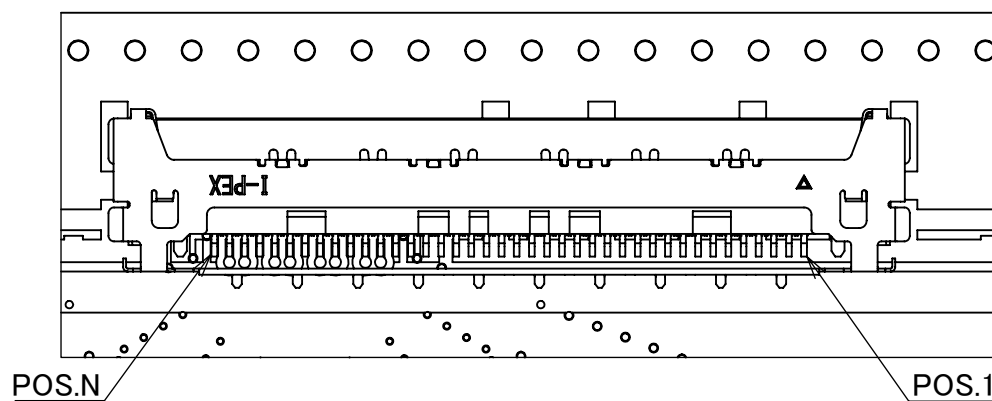
MAIN BOARD B



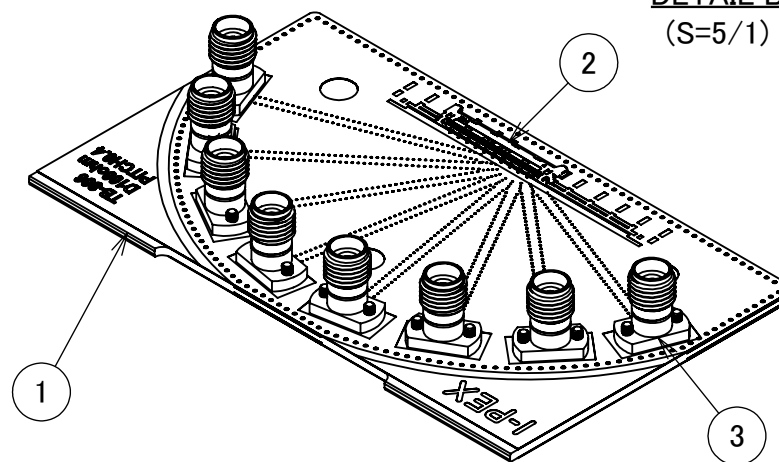
2xTHRU BOARD



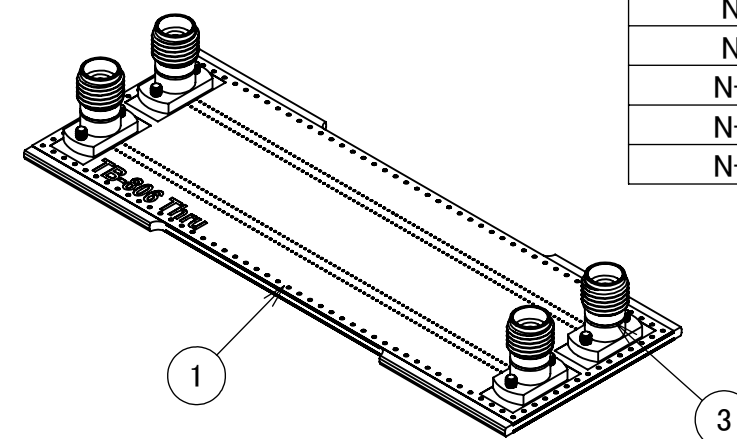
DETAIL A
(S=5/1)



DETAIL B
(S=5/1)



MAIN BOARD A/B ASSEMBLY



2xTHRU BOARD ASSEMBLY

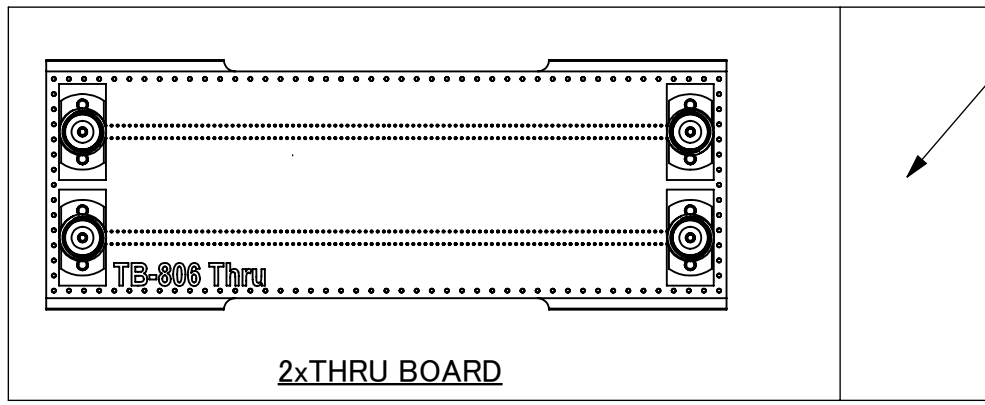
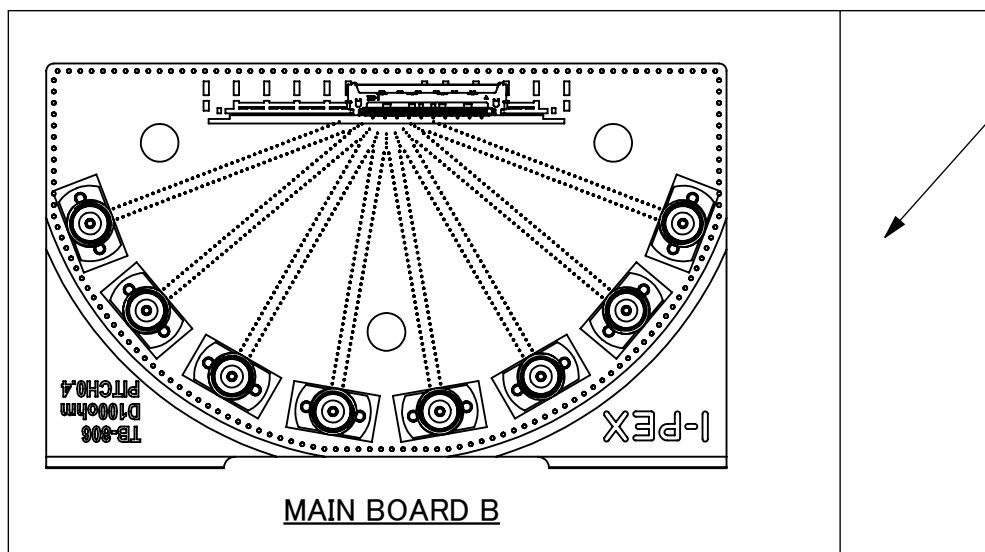
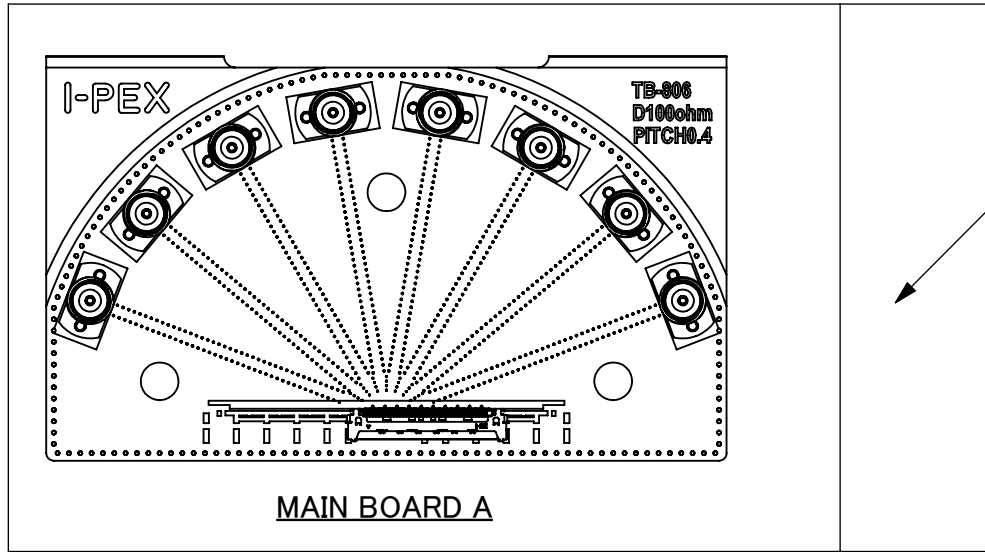
MAIN BOARD B	
PIN POS.	ASSIGNMENT
N	GND
N-1	S1
N-2	S2
N-3	GND
N-4	S3
N-5	S4
N-6	GND
N-7	S5
N-8	S6
N-9	GND
N-10	S7
N-11	S8
N-12	GND

NOTES.

- FOR DETAILED INFORMATION ON THE STRUCTURE OF TEST BOARD TB-806, REFER TO REPORT #IER-001-10697.
- CHARACTERISTIC IMPEDANCE : $50\Omega \pm 10\%$ (SINGLE-ENDED). $T_r=17.5ps$ (10%-90%)
- APPLICABLE PLUG CONNECTOR : CABLINE-CA II PLUG (P/N : 20679-0**T-01)
- MAXIMUM MEASUREMENT FREQUENCY : 40GHz
- OTHER PIN CONFIGURATIONS CAN BE PROVIDED UPON REQUEST.

NO.	DESCRIPTION	PART NO.	QTY	REMARKS
3	2.92mm CONNECTOR	50104-J001	20	JACK
2	CONNECTOR	20682-0**E-02	2	CABLINE-CA II RECEPTACLE
1	TEST BOARD	TB-806	1	TEST BOARD THICKNESS : 1.6mm

ANGLE	$\pm 2^\circ$	6 OVER 30 MAX.	± 0.3	PROJECTION 	SERIES No. R1R1R0	CUSTOMER COPY	
	6 MAX.	± 0.2	30 OVER 120 MAX.				± 0.5
GENERAL TOLERANCE.				TITLE CABLINE® -CA II SI TEST BOARD ASSEMBLY	SCALE 1:2	UNIT mm	
DWG.	K.Hara		DATE				2024/08/28
CHK.	T.Tanigawa				SIZE A3	SHEET 1/2	
REV.	ECN	BY	DATE	APP.			
REVISION RECORD				DWG. No.	91568	REV.	0
				H.Ikari			

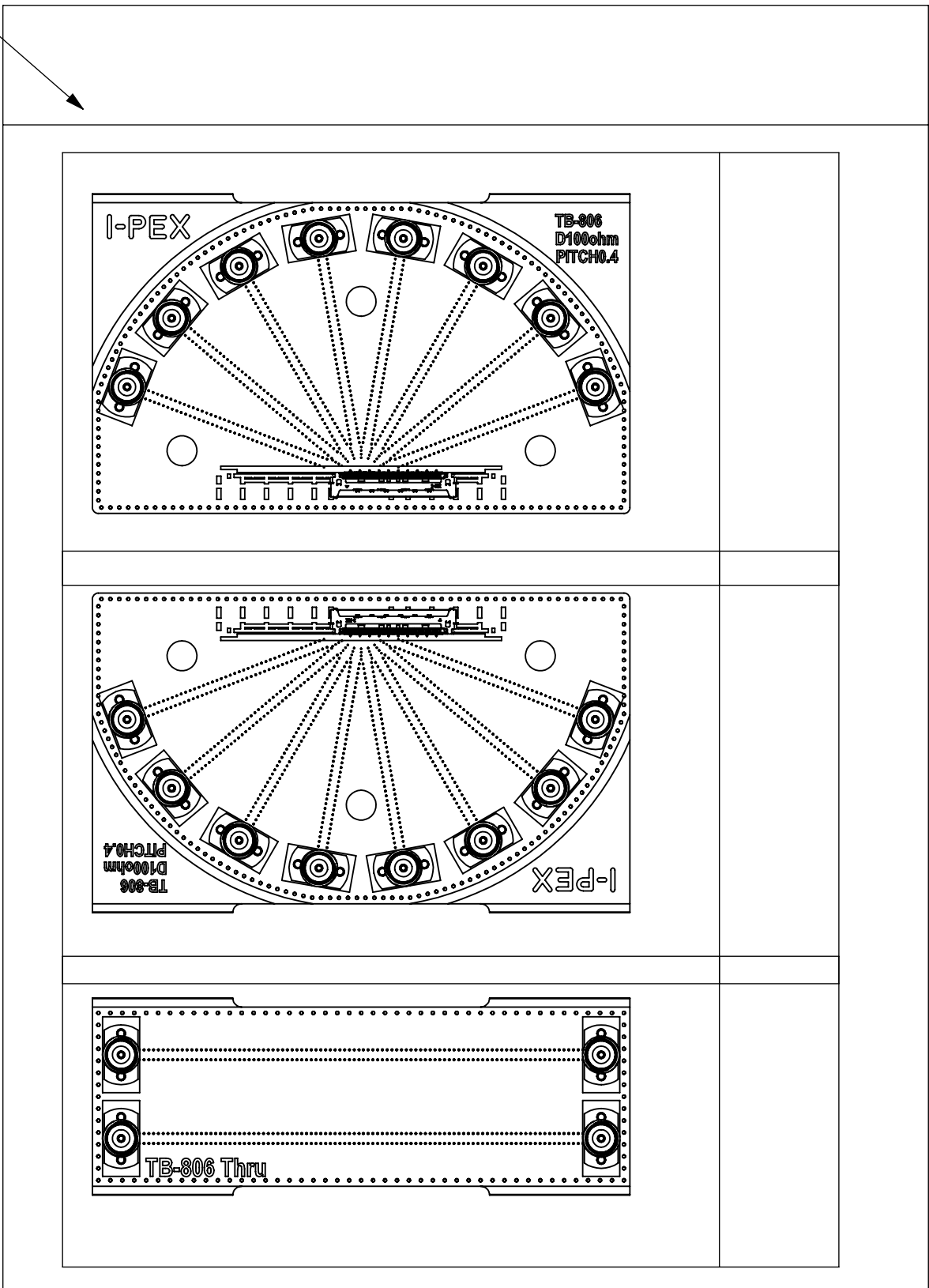


<LARGE BAG>
REUSABLE PLASTIC BAG

<SMALL BAG>
REUSABLE PLASTIC BAG

<SMALL BAG>
REUSABLE PLASTIC BAG

<SMALL BAG>
REUSABLE PLASTIC BAG



PACKING STYLE

ANGLE	±2°	6 OVER 30 MAX.	±0.3	PROJECTION ⊕	SERIES No. R1R1R0	CUSTOMER COPY	
	6 MAX.	±0.2	30 OVER 120 MAX.				
GENERAL TOLERANCE.				TITLE		SCALE	I-PEX
DWG.	DATE			CABLIN® -CA II		1:2	
CHK.				SI TEST BOARD		UNIT	
APP.				ASSEMBLY		mm	SIZE SHEET REV.
				DWG. No.	91568	A3	