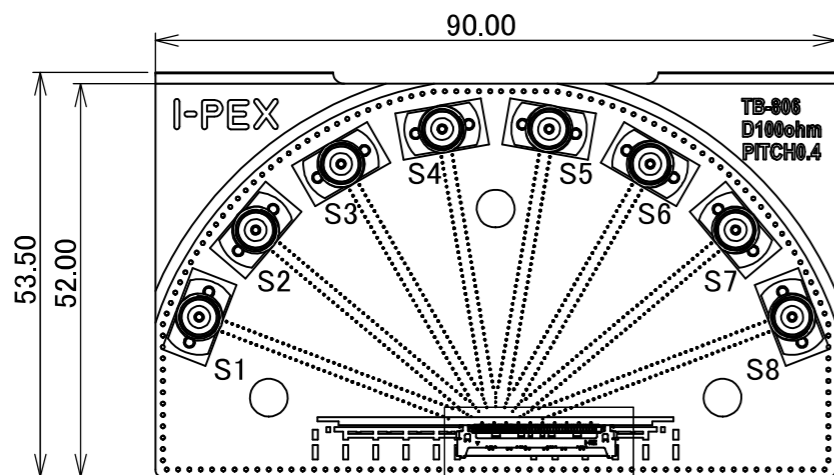


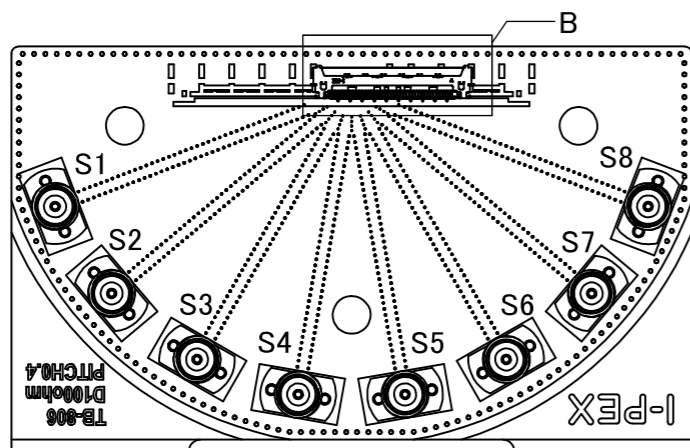
PART NO.	STRUCTURE
91568-0**B-001	MAIN BOARD A ASSEMBLY : 1PC. MAIN BOARD B ASSEMBLY : 1PC. 2xTHRU BOARD ASSEMBLY : 1PC.

91568-0**B-001

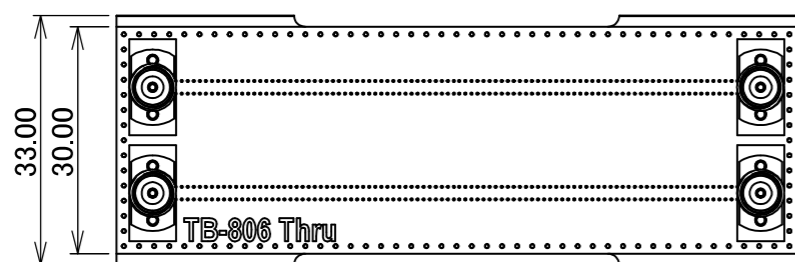
Pos. 20, 30, 40, 50



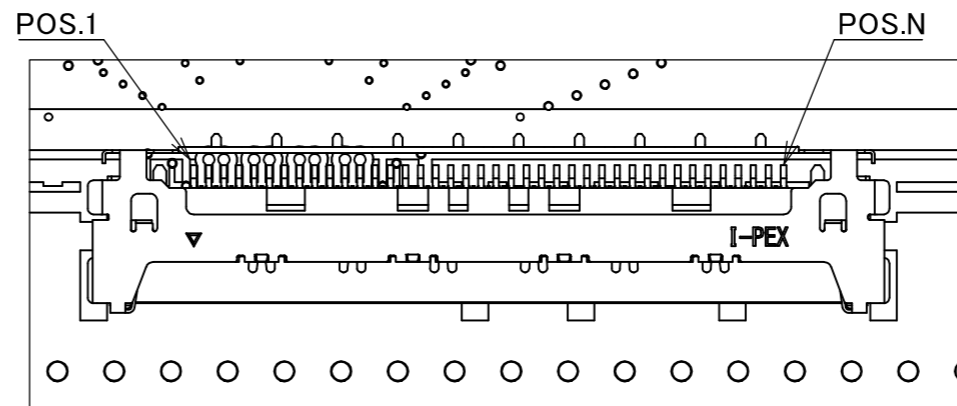
MAIN BOARD A



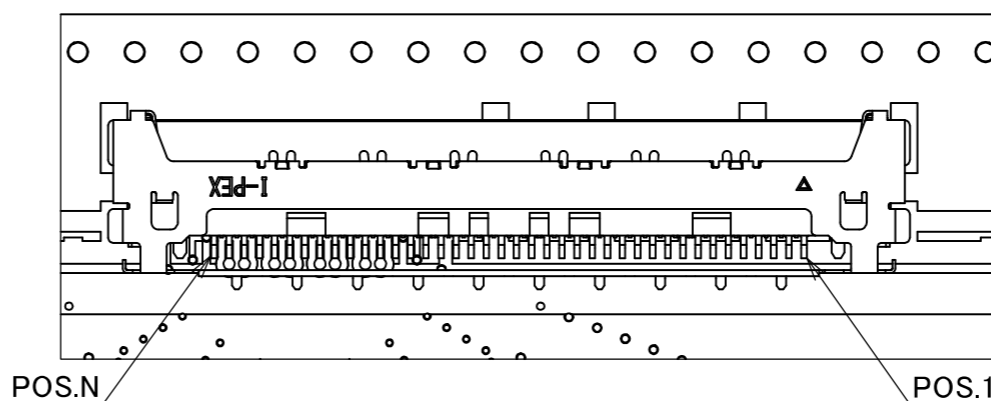
MAIN BOARD B



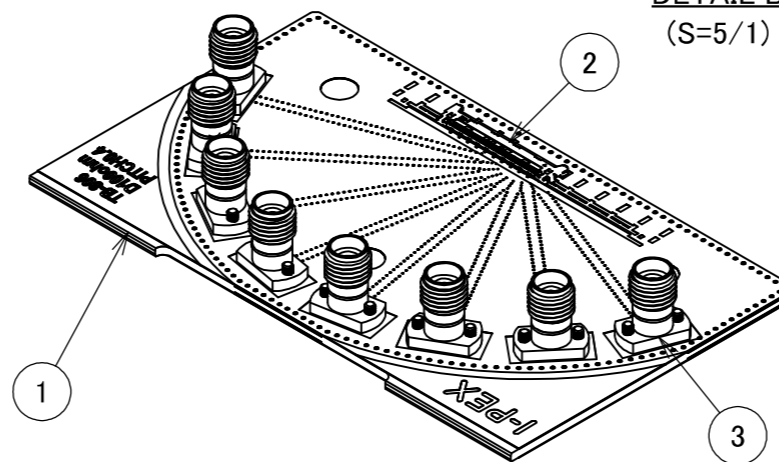
2xTHRU BOARD



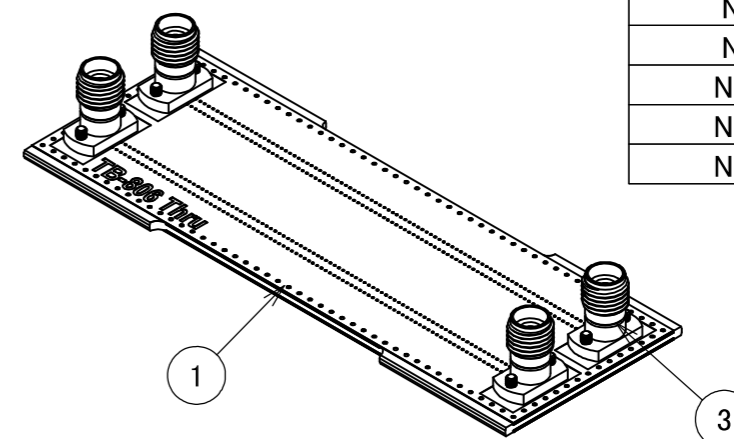
DETAIL A
(S=5/1)



DETAIL B
(S=5/1)



MAIN BOARD A/B ASSEMBLY



2xTHRU BOARD ASSEMBLY

MAIN BOARD A	
PIN POS.	ASSIGNMENT
1	GND
2	S1
3	S2
4	GND
5	S3
6	S4
7	GND
8	S5
9	S6
10	GND
11	S7
12	S8
13	GND

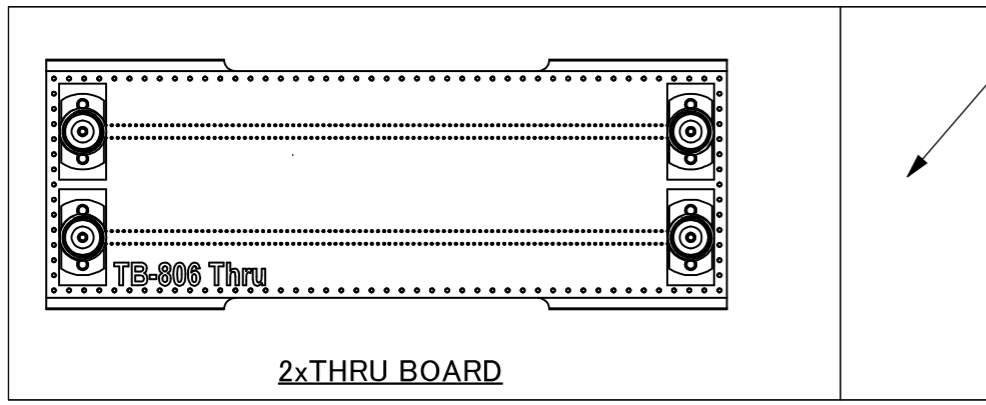
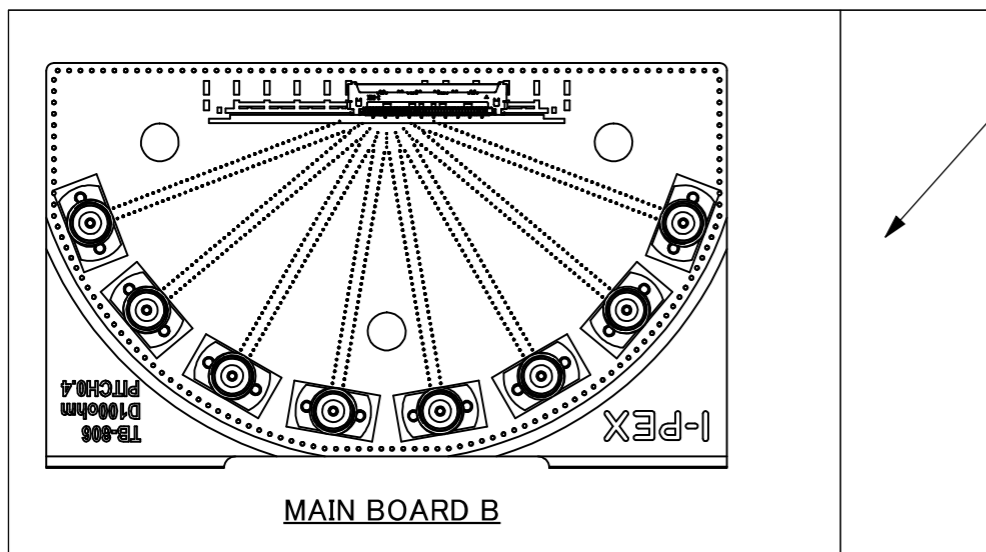
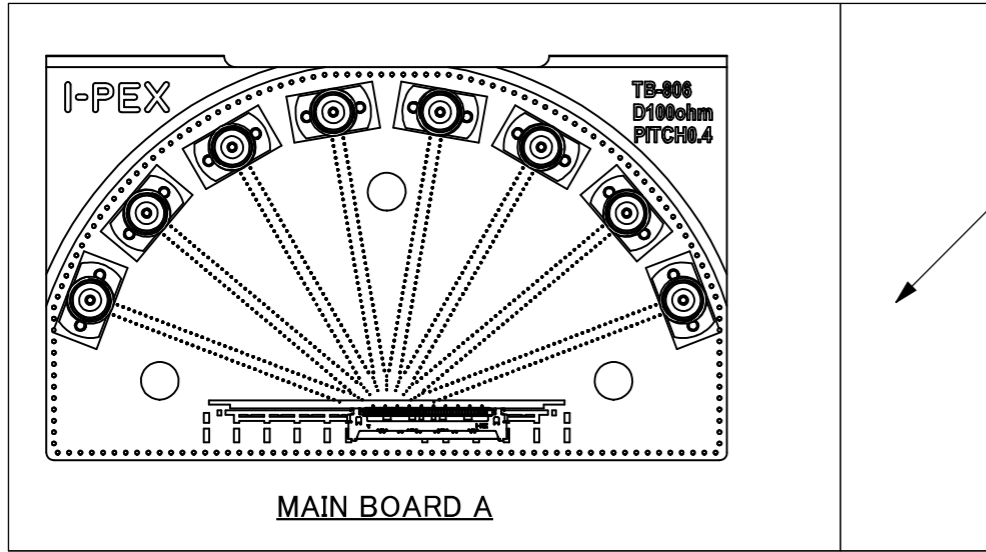
MAIN BOARD B	
PIN POS.	ASSIGNMENT
N	GND
N-1	S1
N-2	S2
N-3	GND
N-4	S3
N-5	S4
N-6	GND
N-7	S5
N-8	S6
N-9	GND
N-10	S7
N-11	S8
N-12	GND

NOTES.

- FOR DETAILED INFORMATION ON THE STRUCTURE OF TEST BOARD TB-806, REFER TO REPORT #IER-001-10697.
- CHARACTERISTIC IMPEDANCE : $50\Omega \pm 10\%$ (SINGLE-ENDED). $T_r=17.5ps$ (10%-90%)
- APPLICABLE PLUG CONNECTOR : CABLINE-CA II PLUG (P/N : 20679-0**T-01)
- MAXIMUM MEASUREMENT FREQUENCY : 40GHz
- OTHER PIN CONFIGURATIONS CAN BE PROVIDED UPON REQUEST.

NO.	DESCRIPTION	PART NO.	QTY	REMARKS
3	2.92mm CONNECTOR	50104-J001	20	JACK
2	CONNECTOR	20682-0**E-02	2	CABLINE-CA II RECEPTACLE
1	TEST BOARD	TB-806	1	TEST BOARD THICKNESS : 1.6mm

REVISION RECORD				ANGLE $\pm 2^\circ$ 6 OVER 30 MAX. ± 0.3 6 MAX. ± 0.2 30 OVER 120 MAX. ± 0.5			PROJECTION 		SERIES No. R1R1R0		CUSTOMER COPY	
DWG. K.Hara DATE 2024/08/28 CHK. T.Tanigawa APP. H.Ikari				GENERAL TOLERANCE.			TITLE CABLINE® -CA II SI TEST BOARD ASSEMBLY		SCALE 1:2 UNIT mm			
0	Z241133	K.Hara	2024/08/28	DWG. No. 91568			SIZE SHEET A3 1/2		REV. 0			

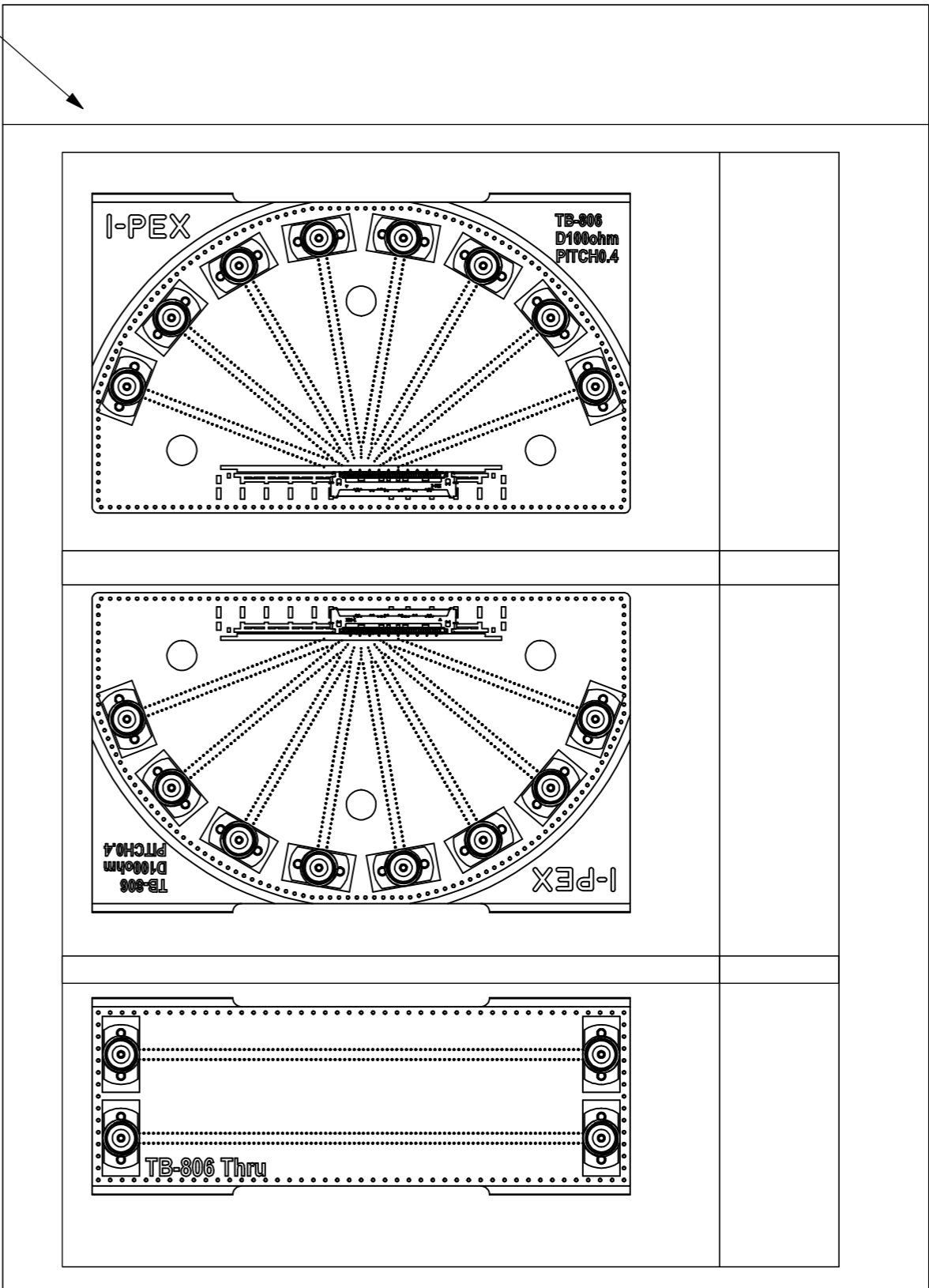


<LARGE BAG>
REUSABLE PLASTIC BAG

<SMALL BAG>
REUSABLE PLASTIC BAG

<SMALL BAG>
REUSABLE PLASTIC BAG

<SMALL BAG>
REUSABLE PLASTIC BAG



PACKING STYLE

ANGLE	±2°	6 OVER 30 MAX.	±0.3	PROJECTION ⊕	SERIES No. R1R1R0	CUSTOMER COPY		
6 MAX.	±0.2	30 OVER 120 MAX.	±0.5					
GENERAL TOLERANCE.				TITLE CABLIN [®] -CA II SI TEST BOARD ASSEMBLY	SCALE	I-PEX		
DWG.	DATE				1:2			
CHK.					UNIT			
APP.					mm			
				DWG. No.	91568	SIZE	SHEET	REV.
						A3	2/2	0