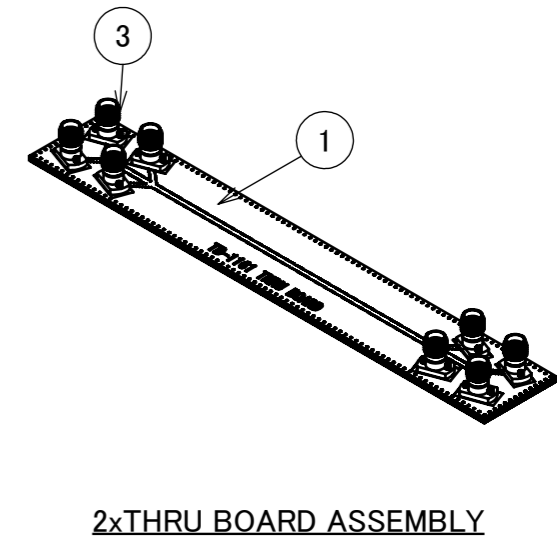
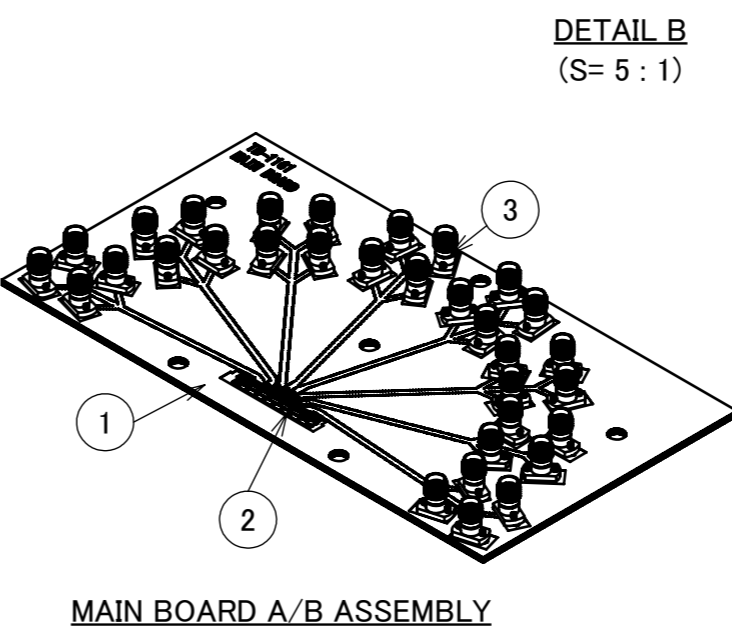
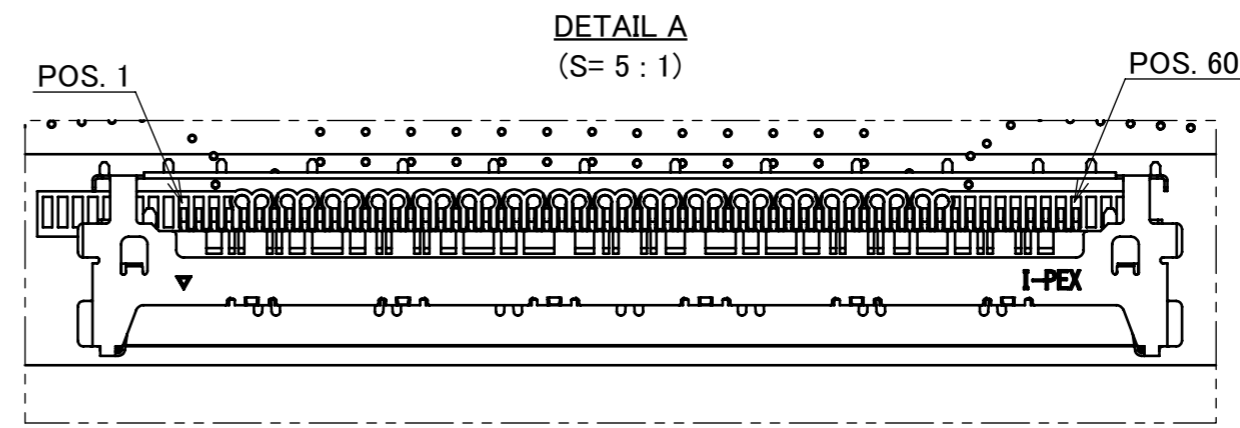
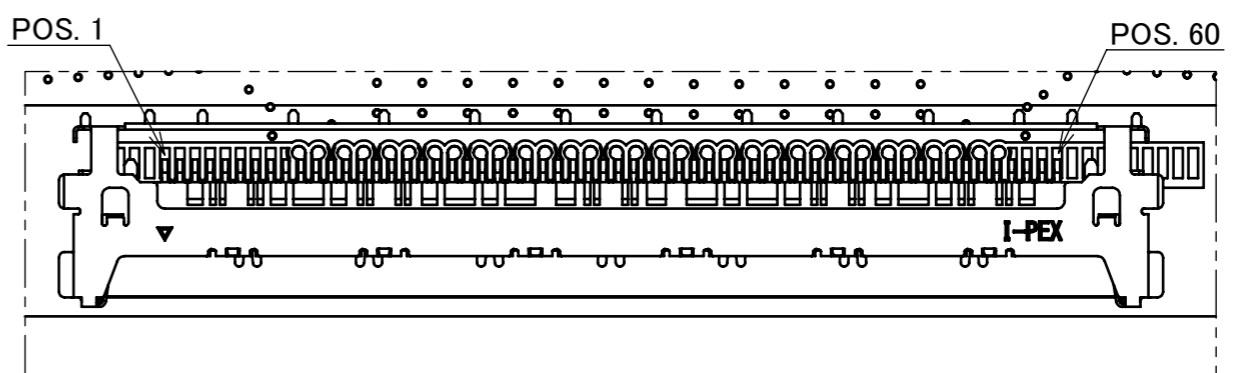
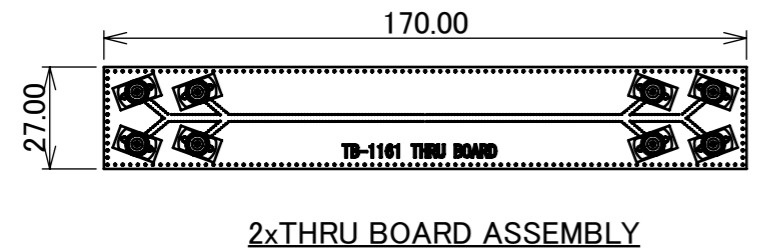
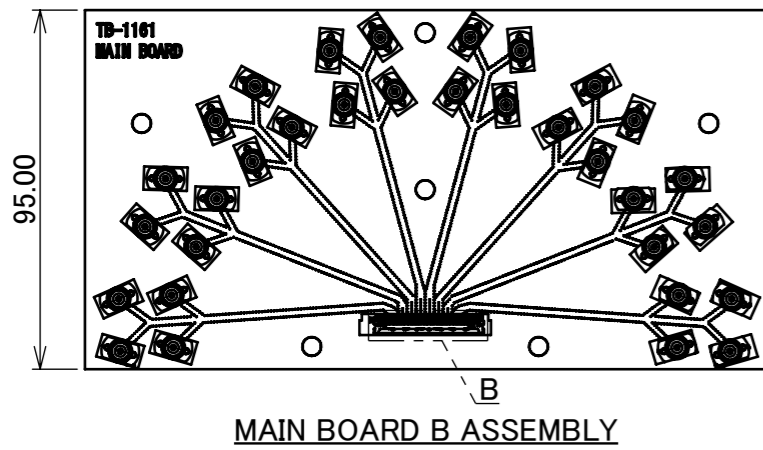
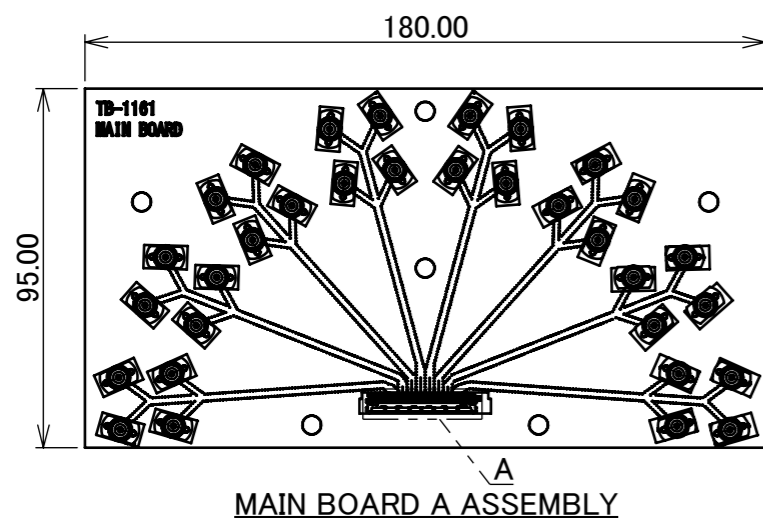


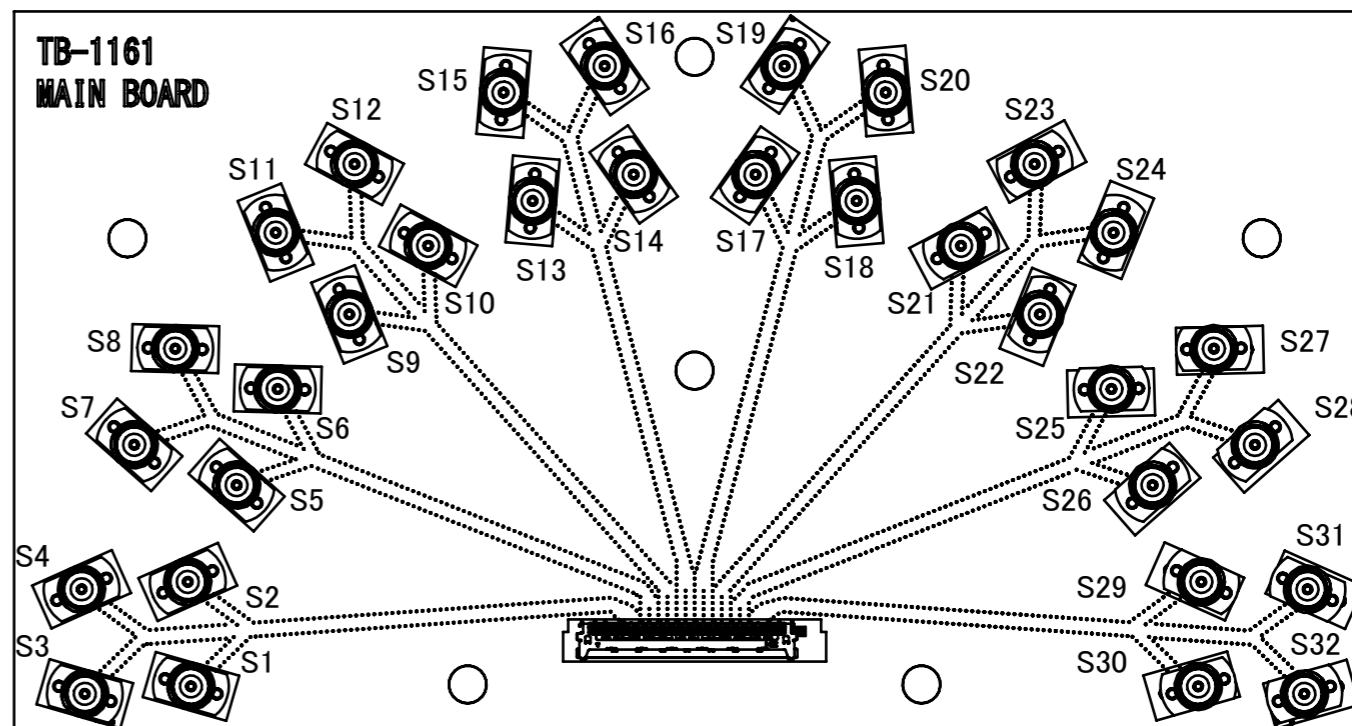
PART NO.	STRUCTURE	HARNESS NO.
91623-060B-001	MAIN BOARD A ASSEMBLY: 2PC 2xTHRU BOARD ASSEMBLY: 1PC	82065-*00B-01 82065-*00B-02
91623-060B-002	MAIN BOARD B ASSEMBLY: 2PC 2xTHRU BOARD ASSEMBLY: 1PC	82065-*00B-03 82065-*00B-04



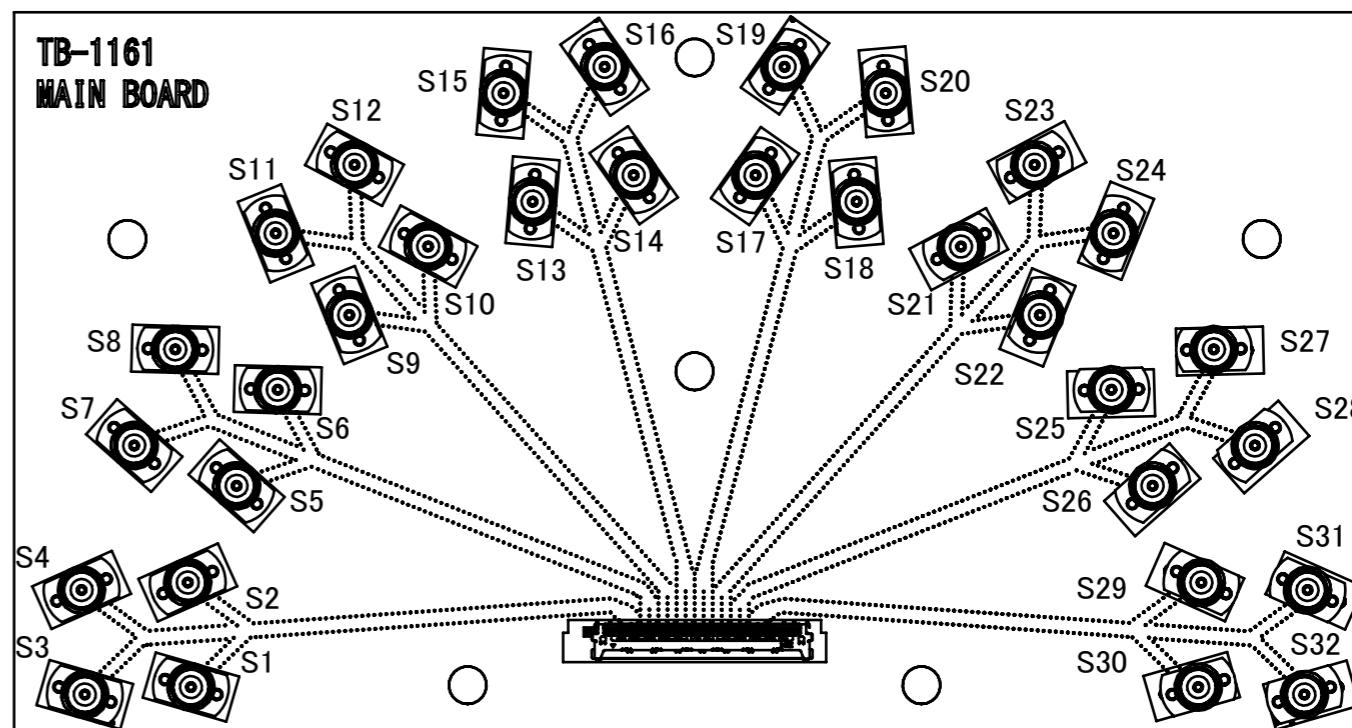
- NOTES.
- FOR DETAILED INFORMATION ON THE STRUCTURE OF TEST BORD TB-1161, REFER TO REPORT # IER-001-11753.
 - CHARACTERISTIC IMPEDANCE: $85\ \Omega \pm 10\%$ (DIFFERENTIAL-ENDED), $T_r=17.5ps$ (10-90%).
 - APPLICABLE PLUG HARNESS: CABLINE-CA IIP PLUS HARNESS (P/N: 82065-*00B-0*)
 - MAXIMUM MEASUREMENT FREQUENCY: 32GHz
 - OTHER PIN CONFIGUATIONS CAN B PROVIE UPON REQUEST.

NO.	DESCRIPTION	PART NO.	QTY	REMARKS																																														
3	2.92mm CONNECTOR	50104-J001	72	JACK																																														
2	CONNECTOR	20790-060E-02	2	CABLINE-CA II PLUS RECEPTACLE 60P																																														
1	TEST BOARD	TB-1161	1	TEST BOARD THICKNESS: 1.60mm																																														
<table border="1"> <tr> <td>ANGLE</td> <td>$\pm 2^\circ$</td> <td>6 OVER 30 MAX.</td> <td>± 0.3</td> <td rowspan="2">PROJECTION </td> <td rowspan="2">SERIES No. R0R0R0</td> <td rowspan="2">CUSTOMER COPY</td> </tr> <tr> <td></td> <td>6 MAX.</td> <td>± 0.2</td> <td>30 OVER 120 MAX.</td> <td>± 0.5</td> </tr> <tr> <td colspan="4">GENERAL TOLERANCE.</td> <td colspan="2">TITLE CABLINE® -CA IIP PLUS SI TEST BOARD ASSEMBLY</td> <td>SCALE 1:2</td> </tr> <tr> <td>DWG.</td> <td>T.Onishi</td> <td>DATE</td> <td>2024/11/22</td> <td colspan="2">UNIT mm</td> <td rowspan="2">I-PEX</td> </tr> <tr> <td>CHK.</td> <td>M.Muro</td> <td colspan="2"></td> <td>SIZE A3</td> <td>SHEET 1/3</td> </tr> <tr> <td>0</td> <td>Z241624</td> <td>T.O</td> <td>2024/11/22</td> <td>APP.</td> <td></td> <td>REV. 0</td> </tr> <tr> <td>REV.</td> <td>ECN</td> <td>BY</td> <td>DATE</td> <td>APP.</td> <td>DWG. No. 91623</td> <td></td> </tr> </table>					ANGLE	$\pm 2^\circ$	6 OVER 30 MAX.	± 0.3	PROJECTION 	SERIES No. R0R0R0	CUSTOMER COPY		6 MAX.	± 0.2	30 OVER 120 MAX.	± 0.5	GENERAL TOLERANCE.				TITLE CABLINE® -CA IIP PLUS SI TEST BOARD ASSEMBLY		SCALE 1:2	DWG.	T.Onishi	DATE	2024/11/22	UNIT mm		I-PEX	CHK.	M.Muro			SIZE A3	SHEET 1/3	0	Z241624	T.O	2024/11/22	APP.		REV. 0	REV.	ECN	BY	DATE	APP.	DWG. No. 91623	
ANGLE	$\pm 2^\circ$	6 OVER 30 MAX.	± 0.3	PROJECTION 	SERIES No. R0R0R0	CUSTOMER COPY																																												
	6 MAX.	± 0.2	30 OVER 120 MAX.				± 0.5																																											
GENERAL TOLERANCE.				TITLE CABLINE® -CA IIP PLUS SI TEST BOARD ASSEMBLY		SCALE 1:2																																												
DWG.	T.Onishi	DATE	2024/11/22	UNIT mm		I-PEX																																												
CHK.	M.Muro			SIZE A3	SHEET 1/3																																													
0	Z241624	T.O	2024/11/22	APP.		REV. 0																																												
REV.	ECN	BY	DATE	APP.	DWG. No. 91623																																													
REVISION RECORD																																																		
T.Masunaga																																																		

MAIN BOARD A		MAIN BOARD B	
PIN POS.	ASIGNMENT	PIN POS.	ASIGNMENT
1	GND	1	GND
2	GND	2	GND
3	GND	3	GND
4	GND	4	GND
5	GND	5	S1
6	GND	6	S2
7	GND	7	GND
8	GND	8	S3
9	GND	9	S4
10	S1	10	GND
11	S2	11	S5
12	GND	12	S6
13	S3	13	GND
14	S4	14	S7
15	GND	15	S8
16	S5	16	GND
17	S6	17	S9
18	GND	18	S10
19	S7	19	GND
20	S8	20	S11
21	GND	21	S12
22	S9	22	GND
23	S10	23	S13
24	GND	24	S14
25	S11	25	GND
26	S12	26	S15
27	GND	27	S16
28	S13	28	GND
29	S14	29	S17
30	GND	30	S18
31	S15	31	GND
32	S16	32	S19
33	GND	33	S20
34	S17	34	GND
35	S18	35	S21
36	GND	36	S22
37	S19	37	GND
38	S20	38	S23
39	GND	39	S24
40	S21	40	GND
41	S22	41	S25
42	GND	42	S26
43	S23	43	GND
44	S24	44	S27
45	GND	45	S28
47	S25	47	GND
46	S26	46	S29
48	GND	48	S30
49	S27	49	GND
50	S28	50	S31
51	GND	51	S32
52	S29	52	GND
53	S30	53	GND
54	GND	54	GND
55	S31	55	GND
56	S32	56	GND
57	GND	57	GND
58	GND	58	GND
59	GND	59	GND
60	GND	60	GND



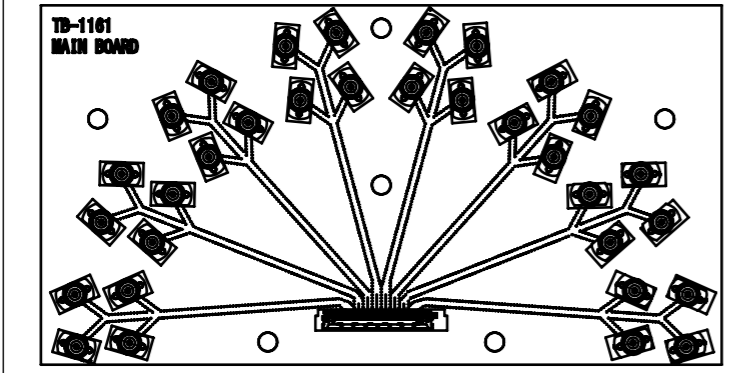
MAIN BOARD A ASSEMBLY



MAIN BOARD B ASSEMBLY

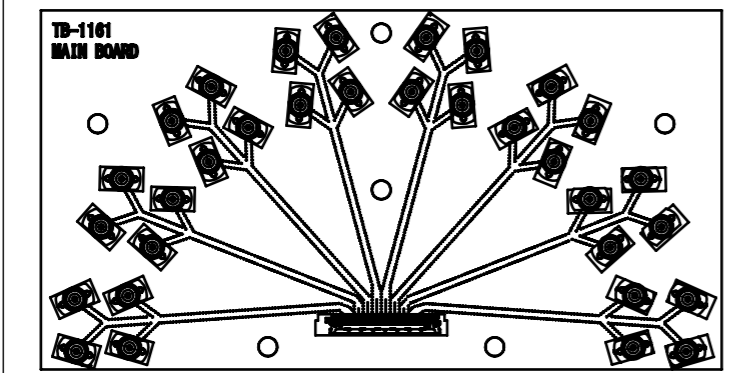
ANGLE	±2°	6 OVER 30 MAX.	±0.3	PROJECTION	SERIES No.	CUSTOMER COPY	
	6 MAX.	±0.2	30 OVER 120 MAX.	±0.5	R0R0R0		
GENERAL TOLERANCE.				TITLE	SCALE	I-PEX	
DWG.	DATE			CABLIN® -CA IIP PLUS	1:1		
CHK.				SI TEST BOARD	UNIT		
APP.				ASSEMBLY	mm		
				DWG. No.	SIZE	SHEET	REV.
				91623	A3	2/3	0

<LARGE BAG>
REUSABLE PLASTIC BAG



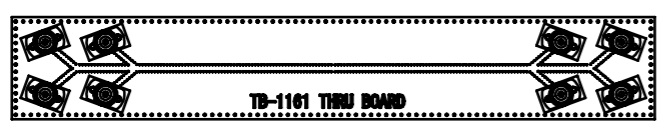
MAIN BOARD A ASSEMBLY

<SMALL BAG>
REUSABLE PLASTIC BAG



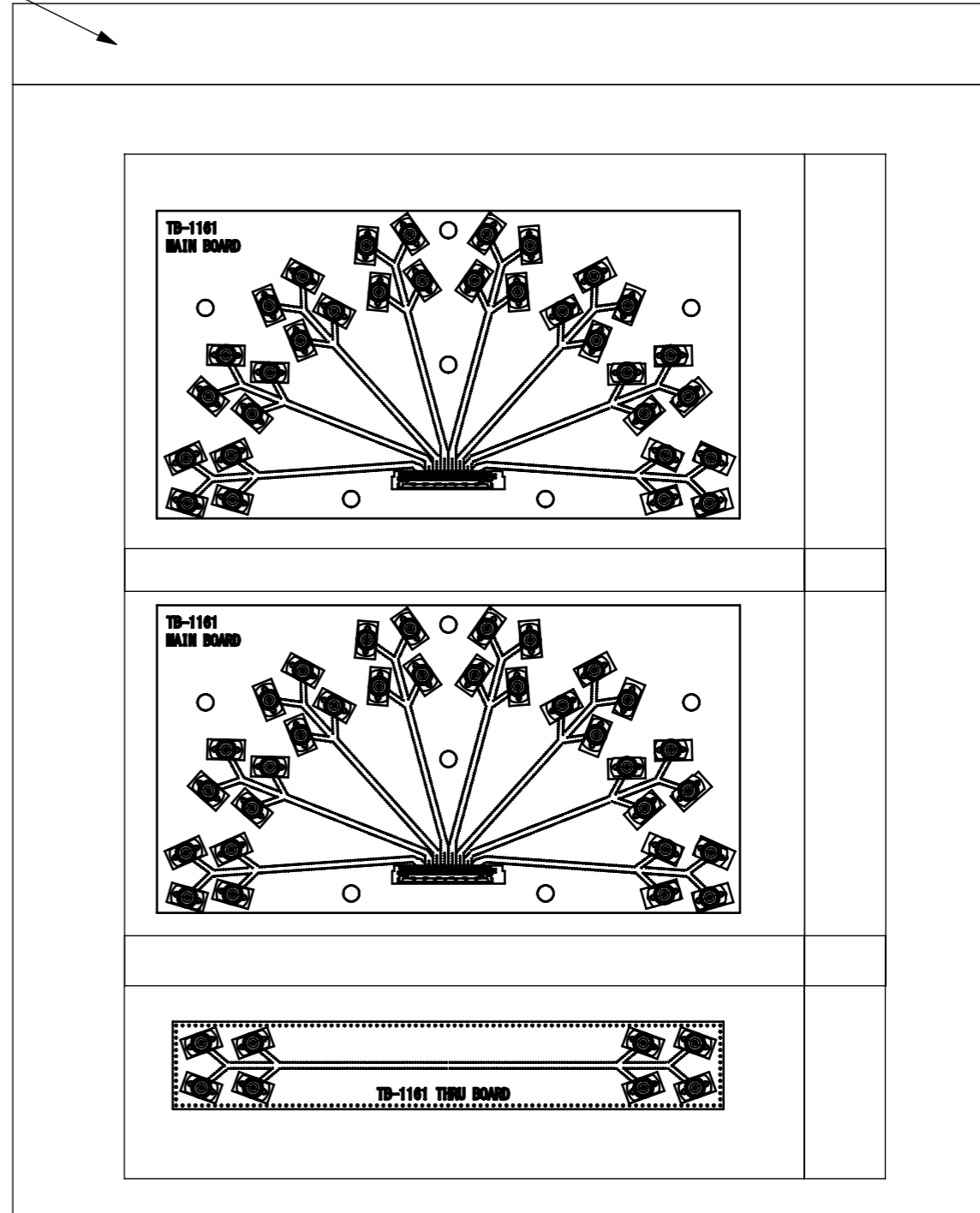
MAIN BOARD B ASSEMBLY

<SMALL BAG>
REUSABLE PLASTIC BAG



2xTHRU BOARD ASSEMBLY

<SMALL BAG>
REUSABLE PLASTIC BAG



PACKING STYLE

ANGLE	±2°	6 OVER 30 MAX.	±0.3	PROJECTION ⊕	SERIES No. R0R0R0	CUSTOMER COPY		
6 MAX.	±0.2	30 OVER 120 MAX.	±0.5					
GENERAL TOLERANCE.				TITLE CABLIN® -CA IIP PLUS SI TEST BOARD ASSEMBLY	DWG. No. 91623	SCALE	I-PEX	
DWG.	DATE		1:2					
CHK.			UNIT					
APP.			mm					
						SIZE	SHEET	REV.
						A3	3/3	0