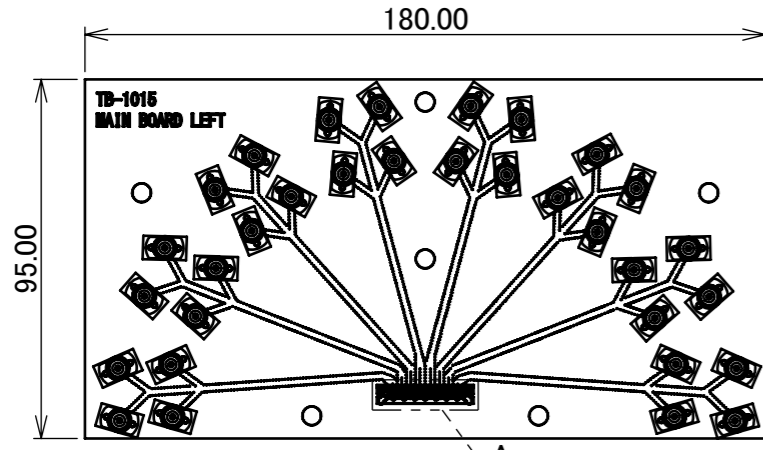
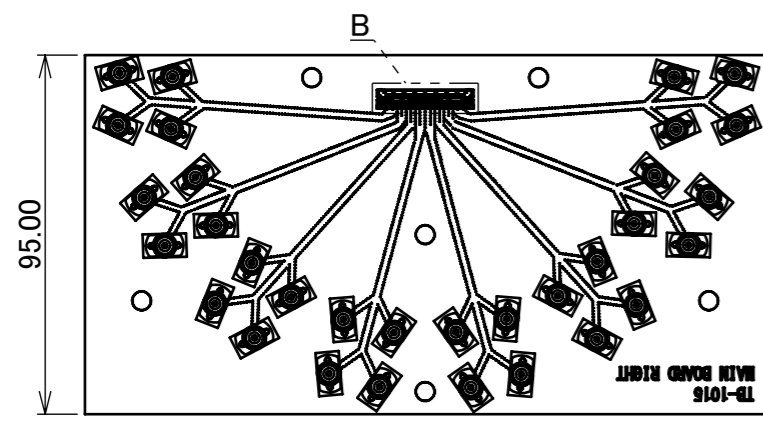


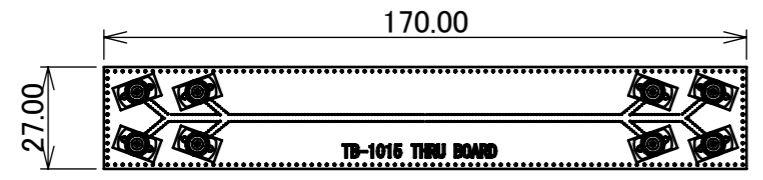
PART NO.	STRUCTURE
91566-050B-001	MAIN BOARD A ASSEMBLY: 1PC MAIN BOARD B ASSEMBLY: 1PC 2xTHRU BOARD ASSEMBLY: 1PC



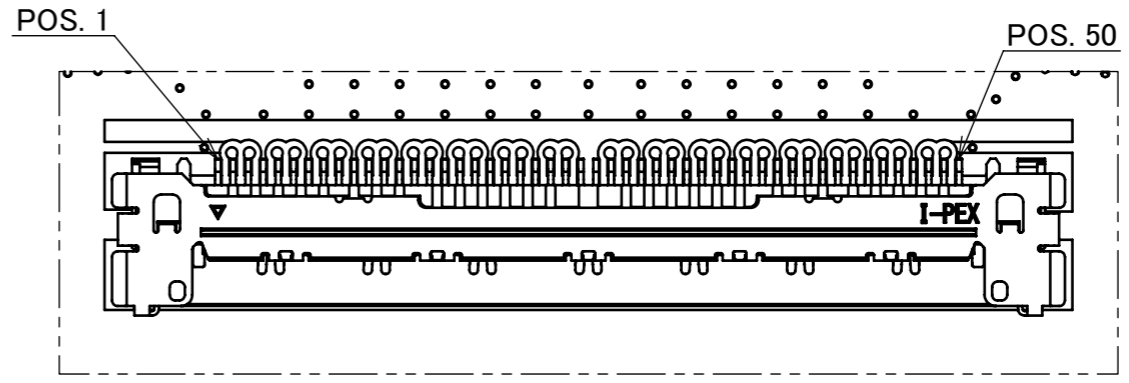
MAIN BOARD A ASSEMBLY



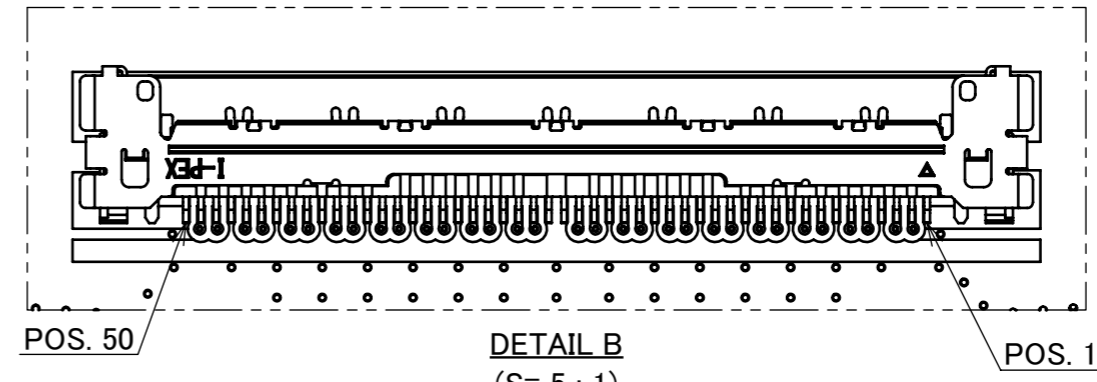
MAIN BOARD B ASSEMBLY



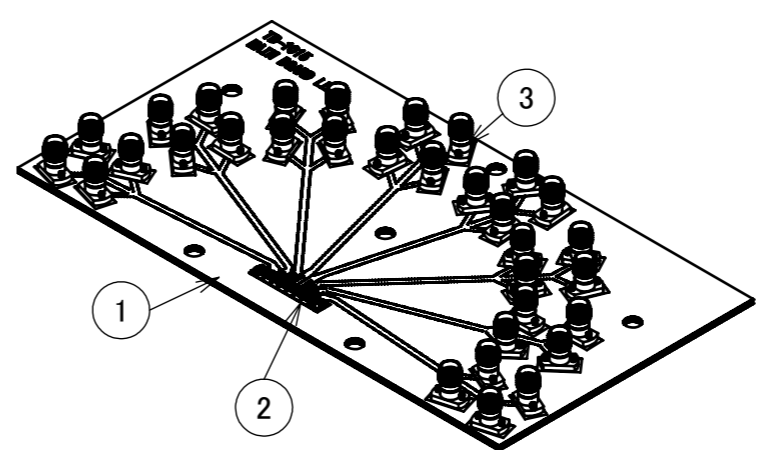
2xTHRU BOARD ASSEMBLY



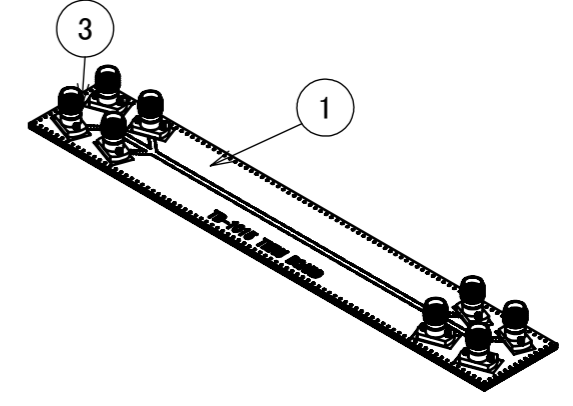
DETAIL A
(S= 5 : 1)



DETAIL B
(S= 5 : 1)



MAIN BOARD A/B ASSEMBLY



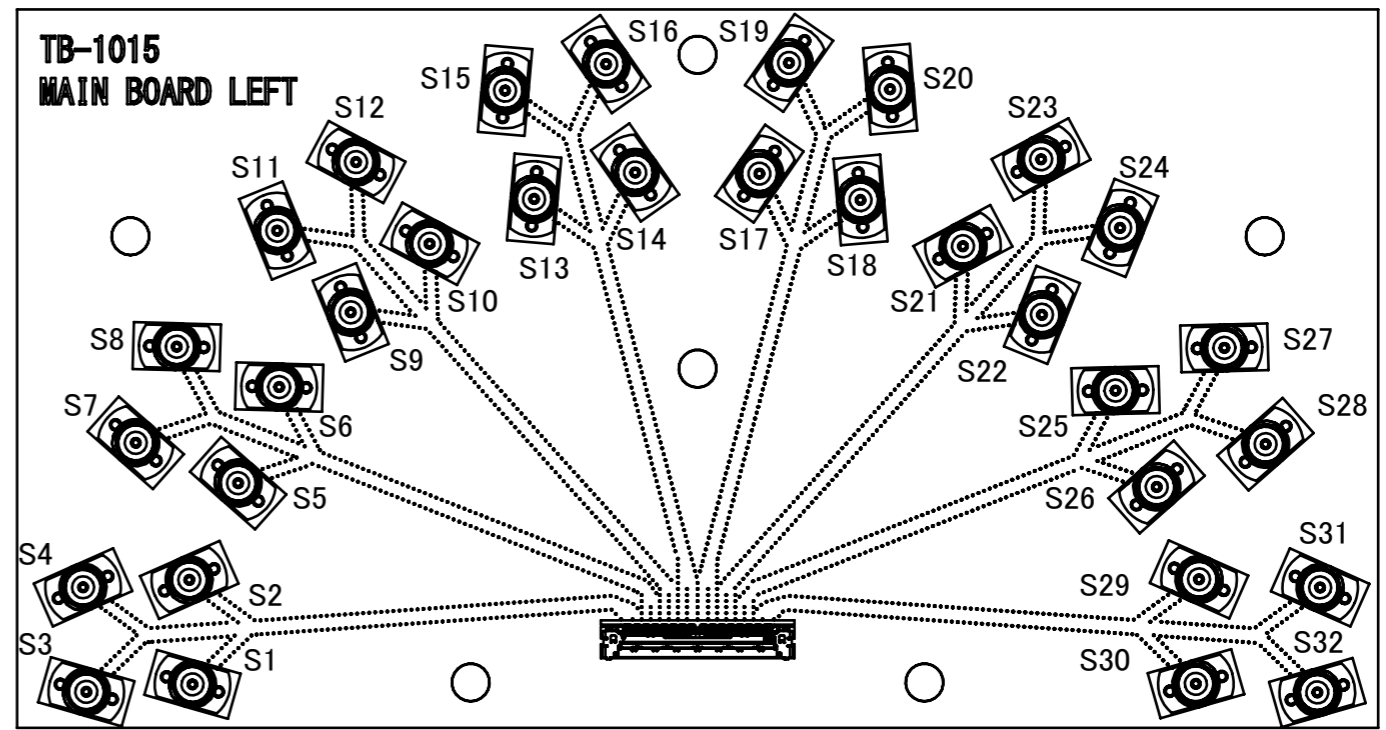
2xTHRU BOARD ASSEMBLY

- NOTES.
- FOR DETAILED INFORMATION ON THE STRUCTURE OF TEST BORD TB-1015, REFER TO REPORT # IER-001-10724.
 - CHARACTERISTIC IMPEDANCE: $90\Omega \pm 10\%$ (DIFFERENTIAL-ENDED), $T_r=17.5ps$ (10-90%).
 - APPLICABLE PLUG HARNESS:
CABLINÉ-CAP PADDLE CARD HARNESS (P/N: 81863-100B-0X)
 - MAXIMUM MEASUREMENT FREQUENCY: 28GHz
 - OTHER PIN CONFIGUATIONS CAN B PROVIE UPON REQUEST.

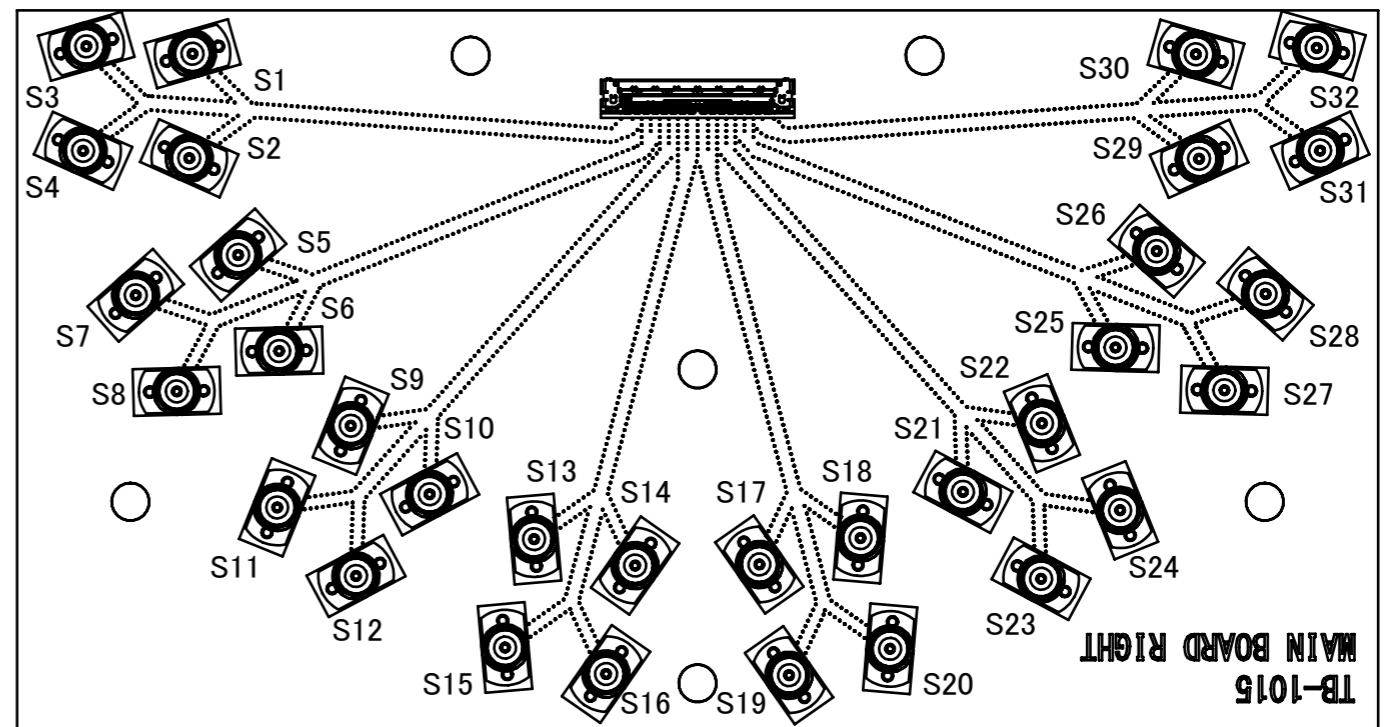
NO.	DESCRIPTION	PART NO.	QTY	REMARKS
3	2.92mm CONNECTOR	50104-J001	72	JACK
2	CONNECTOR	20525-050E-02	2	CABLINÉ-CA RECEPTACLE 50P
1	TEST BOARD	TB-1015	1	TEST BOARD THICKNESS: 1.52mm

ANGLE	$\pm 2^\circ$	6 OVER 30 MAX.	± 0.3	PROJECTION 	SERIES No. R0R10R0	CUSTOMER COPY
		6 MAX.	± 0.2			
GENERAL TOLERANCE.				TITLE		SCALE
DWG.	T.Onishi	DATE	2024/08/28	CABLINÉ® -CAP 50P		1:2
CHK.	M.Muro			SI TEST BOARD		UNIT
0	Z241139	T.O	2024/08/28	ASSEMBLY		mm
REV.	ECN	BY	DATE	APP.	DWG. No.	SIZE
				T.Masunaga	91566	A3
REVISION RECORD						SHEET
						1/3
						REV.
						0

MAIN BOARD A		MAIN BOARD B	
PIN POS.	ASIGNMENT	PIN POS.	ASIGNMENT
1	GND	50	GND
2	S1	49	S1
3	S2	48	S2
4	GND	47	GND
5	S3	46	S3
6	S4	45	S4
7	GND	44	GND
8	S5	43	S5
9	S6	42	S6
10	GND	41	GND
11	S7	40	S7
12	S8	39	S8
13	GND	38	GND
14	S9	37	S9
15	S10	36	S10
16	GND	35	GND
17	S11	34	S11
18	S12	33	S12
19	GND	32	GND
20	S13	31	S13
21	S14	30	S14
22	GND	29	GND
23	S15	28	S15
24	S16	27	S16
25	GND	26	GND
26	GND	25	GND
27	S17	24	S17
28	S18	23	S18
29	GND	22	GND
30	S19	21	S19
31	S20	20	S20
32	GND	19	GND
33	S21	18	S21
34	S22	17	S22
35	GND	16	GND
36	S23	15	S23
37	S24	14	S24
38	GND	13	GND
39	S25	12	S25
40	S26	11	S26
41	GND	10	GND
42	S27	9	S27
43	S28	8	S28
44	GND	7	GND
45	S29	6	S29
46	S30	5	S30
47	GND	4	GND
48	S31	3	S31
49	S32	2	S32
50	GND	1	GND



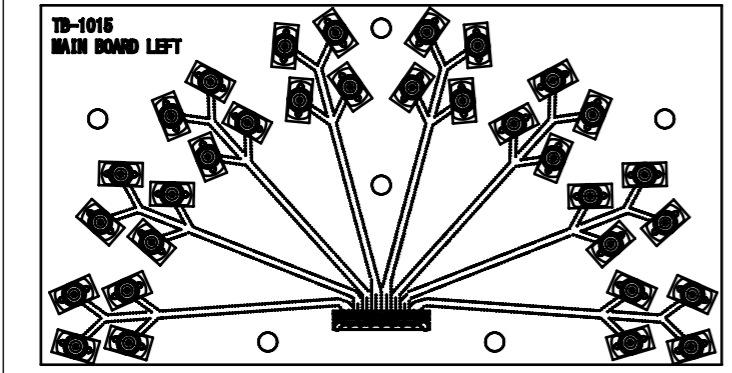
MAIN BOARD A ASSEMBLY



MAIN BOARD B ASSEMBLY

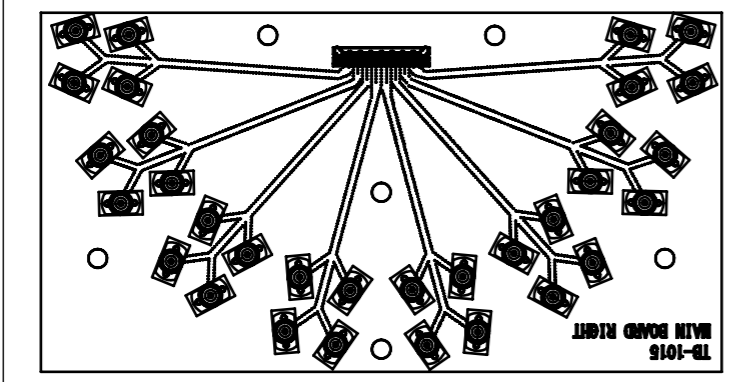
ANGLE	±2°	6 OVER 30 MAX.	±0.3	PROJECTION	SERIES No.	CUSTOMER COPY
	6 MAX.	±0.2	30 OVER 120 MAX.	±0.5	R0R10R0	
GENERAL TOLERANCE.				TITLE	SCALE	I-PEX
DWG.	DATE			CABLIN [®] -CAP 50P	1:1	
CHK.				SI TEST BOARD	UNIT	
APP.				ASSEMBLY	mm	SHEET
				DWG. No.	A3	
				91566	2/3	0

<LARGE BAG>
REUSABLE PLASTIC BAG



MAIN BOARD A ASSEMBLY

<SMALL BAG>
REUSABLE PLASTIC BAG



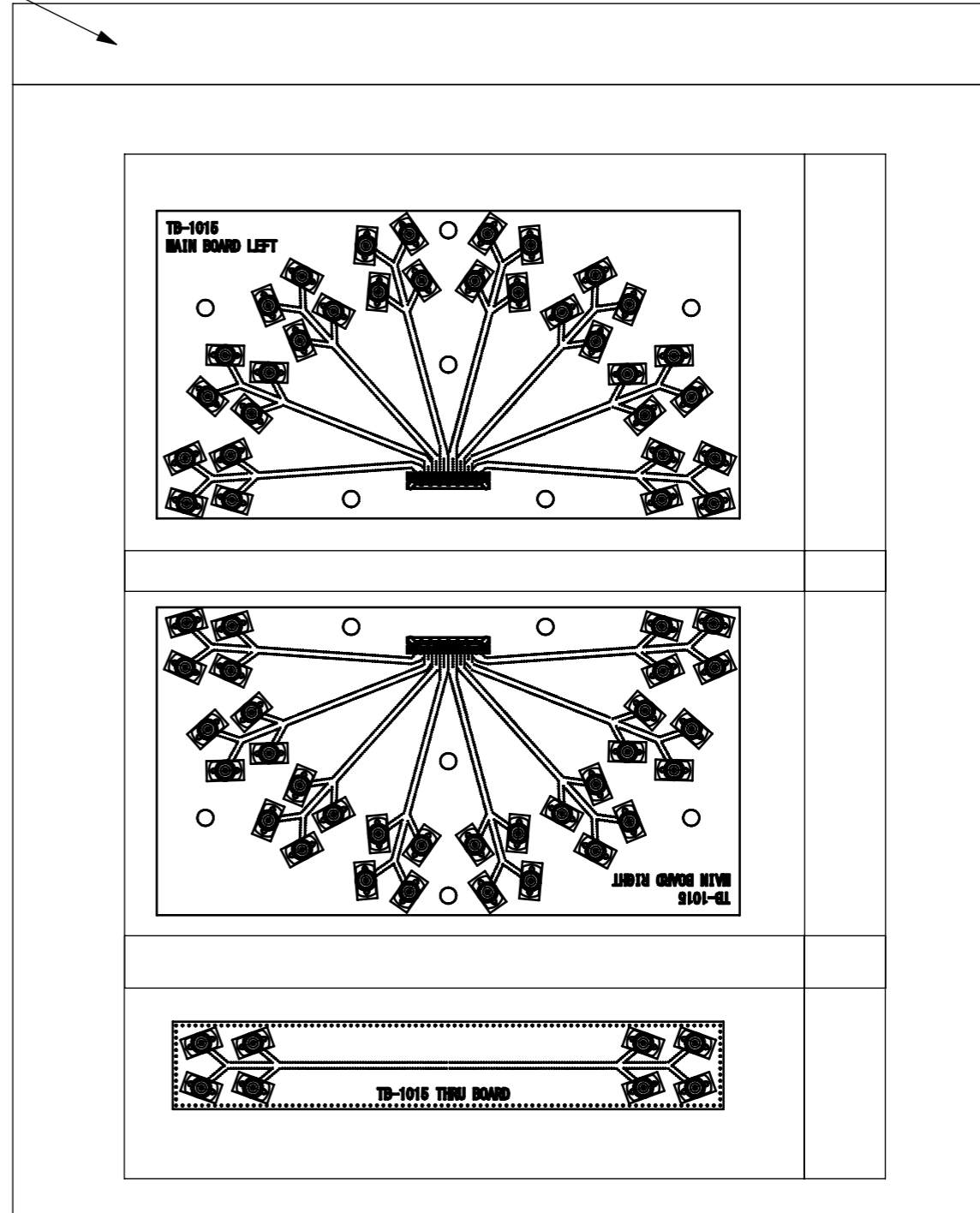
MAIN BOARD B ASSEMBLY

<SMALL BAG>
REUSABLE PLASTIC BAG



2xTHRU BOARD ASSEMBLY

<SMALL BAG>
REUSABLE PLASTIC BAG



PACKING STYLE

ANGLE	±2°	6 OVER 30 MAX.	±0.3	PROJECTION ⊕	SERIES No. R0R10R0	CUSTOMER COPY			
6 MAX.	±0.2	30 OVER 120 MAX.	±0.5						
GENERAL TOLERANCE.				TITLE CABLIN® -CAP 50P SI TEST BOARD ASSEMBLY	SCALE	I-PEX			
DWG.	DATE		1:2						
CHK.			UNIT		mm				
APP.			SIZE		A3				
				DWG. No.	91566	SHEET	3/3	REV.	0