

Recommended P/N 3539-0001-45T

PART NO.	PACKING
3539-0001-45T	TRAY
3539-0001-45E	EMBOSS

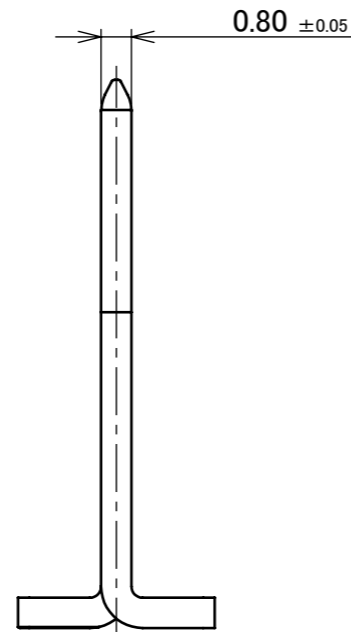
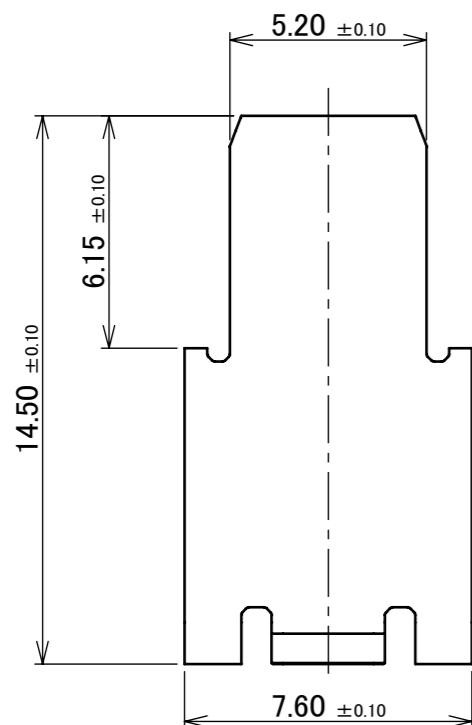
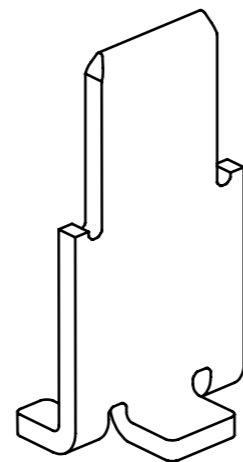
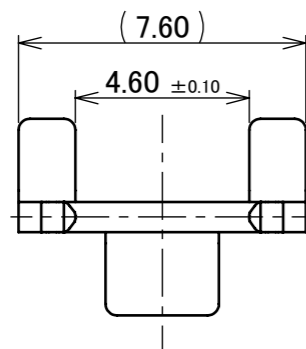


Halogen Free



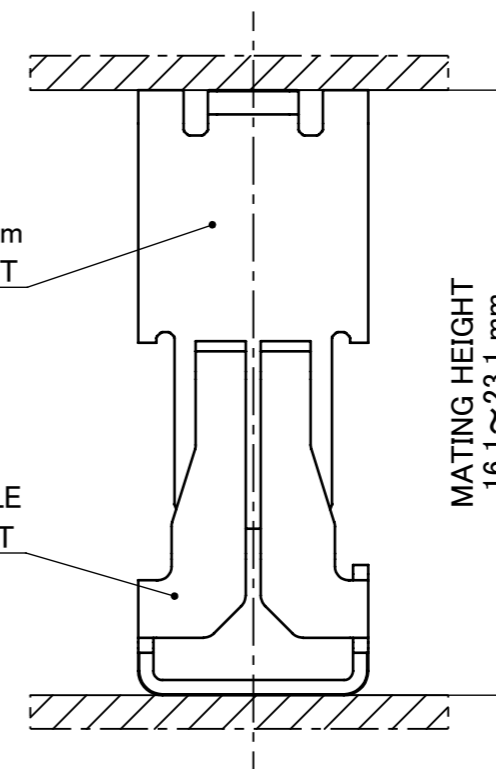
RoHS Compliant

IATF 16949 Cetified [Planned]



AP-10 PLUG 14.5mm
P/N: 3539-0001-45T

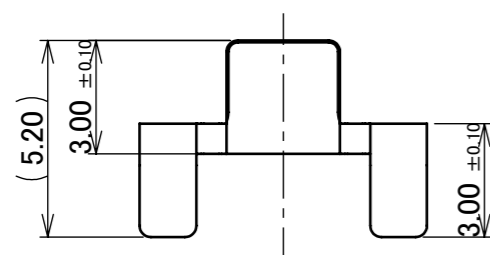
AP-10 RECEPTACLE
P/N: 3532-0001-00T



MATING CONDITION

NOTES.

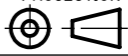

1. APPLICABLE CONNECTOR
AP-10 RECEPTACLE (P/N: 3532-0001-00T)



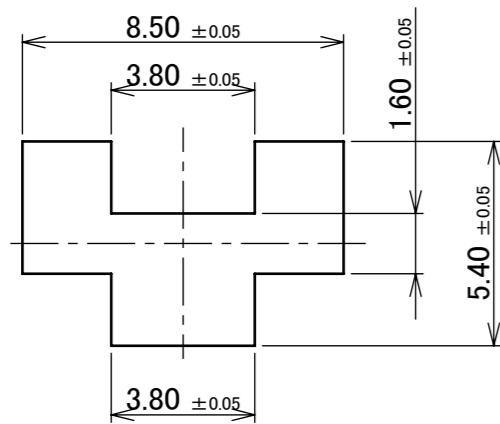
1	PLUG	BRASS	Sn 1.00~4.50 μm OVER Ni 1.00~4.50 μm
NO.	DESCRIPTION	MATERIAL	REMARKS, FINISH

ANGLE	±2°	6 OVER 30 MAX.	±0.3	PROJECTION	SERIES No.	CUSTOMER COPY				
	6 MAX.	±0.2	30 OVER 120 MAX.	±0.5	R2					
3	Z240727	F.J	2024/06/10	Y.H	GENERAL TOLERANCE.		TITLE AP-10 PLUG 14.5mm	SCALE	I-PEX	
2	Z231434	J.G	2023/11/30	Y.H	DWG.	DATE		5:1		
1	Z230029	F.J	2023/01/17	Y.H	K.Tanaka	2022/03/14		UNIT		
0	Z220290	K.T	2022/03/14	Y.H	CHK.	-		mm		
REV.	ECN	BY	DATE	APP.	APP.	DWG. No.	3539	SIZE	SHEET	REV.
REVISION RECORD					Y.Hashimoto			A3	1/5	3

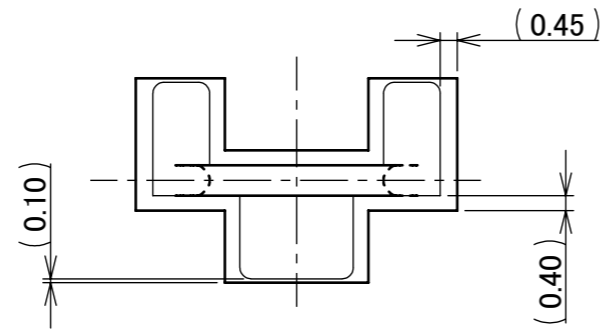
ITEMS	SPECIFICATION
APPLICABLE CONNECTOR PART No.	3532-0001-00T
RATING AMPERAGE	16A DC
TEMPERATURE RISE	△15.0°C MAX
COMPONENT TEMPERATURE (ENERGIZATION)	233~378K(-40°C~105°C)
OPERATING HUMIDITY	85% MAX.(NON-CONDENSING)
CONTACT RESISTANCE	INITIAL : 1.0 mohm MAX. / AFTER TEST : 1.0 mohm MAX.
DURABILITY	3 CYCLES
MATING FORCE/UNMATING FORCE	15.0 N MAX./15.0 N MAX.
COPLANARITY	0.10mm MAX.
PRODUCT SPECIFICATION	PRS-2616
TEST REPORT	TR-19063
PACKING STANDARD	PST-22010(TRAY) PST-23067(EMBOSS)
APPEARANCE CRITERIA No.	QLS-A***

ANGLE	±2°	6 OVER 30 MAX.	±0.3	PROJECTION 	SERIES No. R2	CUSTOMER COPY		
6 MAX.	±0.2	30 OVER 120 MAX.	±0.5					
GENERAL TOLERANCE.				TITLE AP-10 PLUG 14.5mm	SCALE 5:1 UNIT mm			
DWG.	DATE							
CHK.								
APP.								
				DWG. No.	3539	SIZE A3	SHEET 2/5	REV. 3

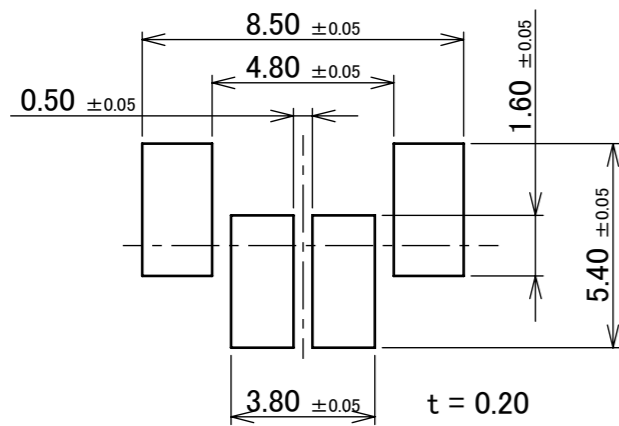
PART NO.	PACKING
3539-0001-45T	TRAY
3539-0001-45E	EMBOSS



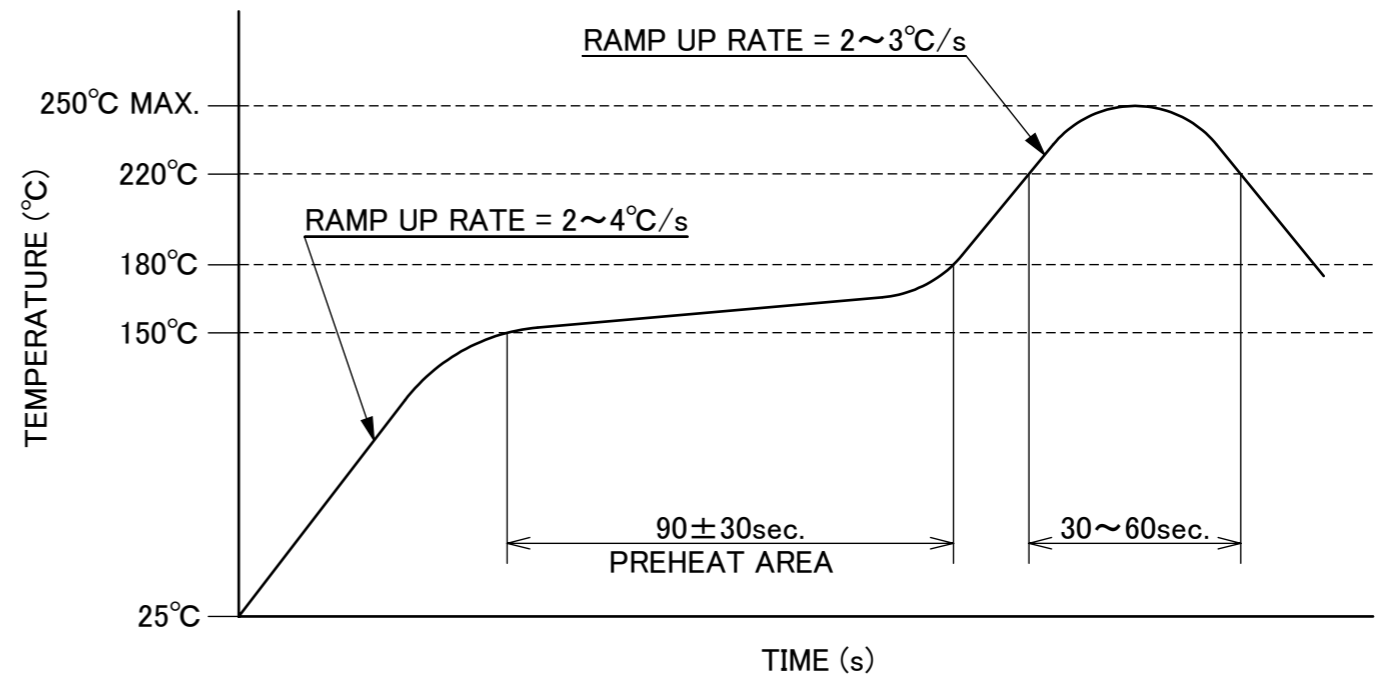
RECOMMENDED PATTERN LAYOUT



CONNECTOR ON RECOMMENDED PATTERN



RECOMMENDED METAL MASK LAYOUT

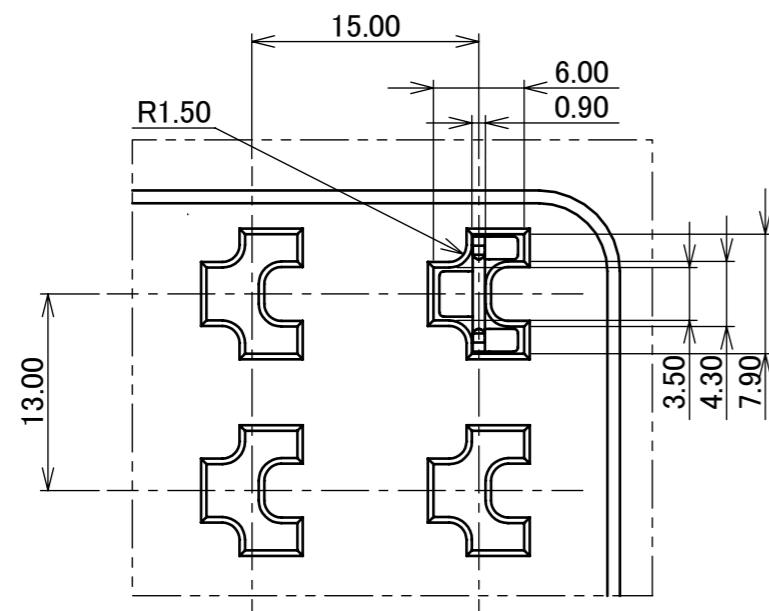
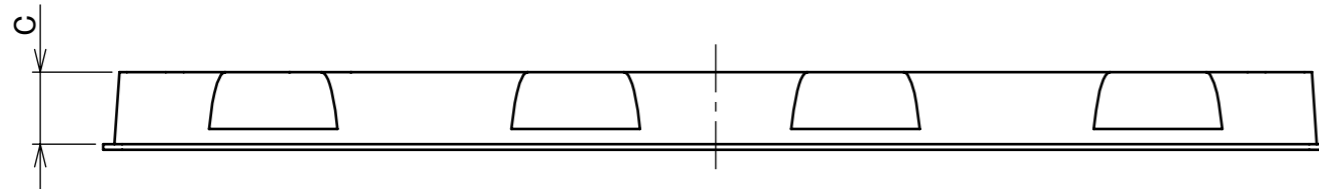
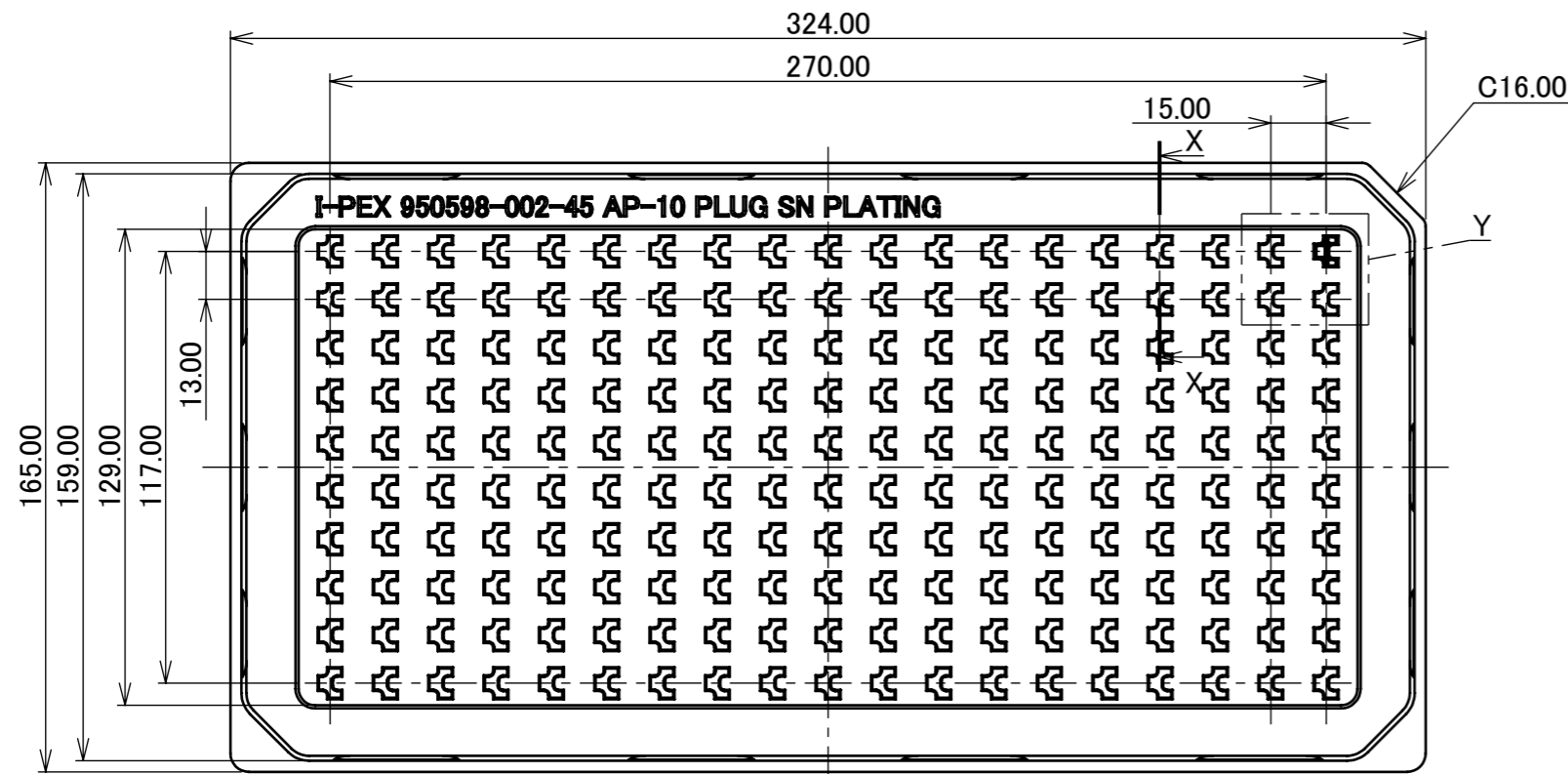


REFLOW TEMPERATURE PROFILE
SENJU METAL INDUSTRY CO., LTD. : M705-SHF(Sn96.5 Ag3.0 Cu0.5)

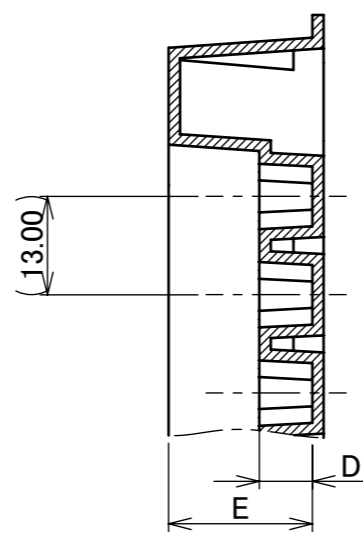
ANGLE	±2°	6 OVER 30 MAX.	±0.3	PROJECTION	SERIES No.	CUSTOMER COPY			
	6 MAX.	±0.2	30 OVER 120 MAX.	±0.5		R2			
GENERAL TOLERANCE.				TITLE		SCALE	I-PEX		
DWG.	DATE			AP-10		5:1			
CHK.				PLUG 14.5mm		UNIT			
APP.				DWG. No.		mm			
				3539		SIZE	SHEET	REV.	
						A3	3/5	3	

PART NO.	C	D	E	QTY. PER TRAY (PIECES / TRAY)	QTY. PER PACKING CARTON (TRAYS / CARTON)
3539-0001-45T	19.0	7.0	19.0	190 PIECES / TRAY	4 TRAYS / CARTON = 760 PIECES

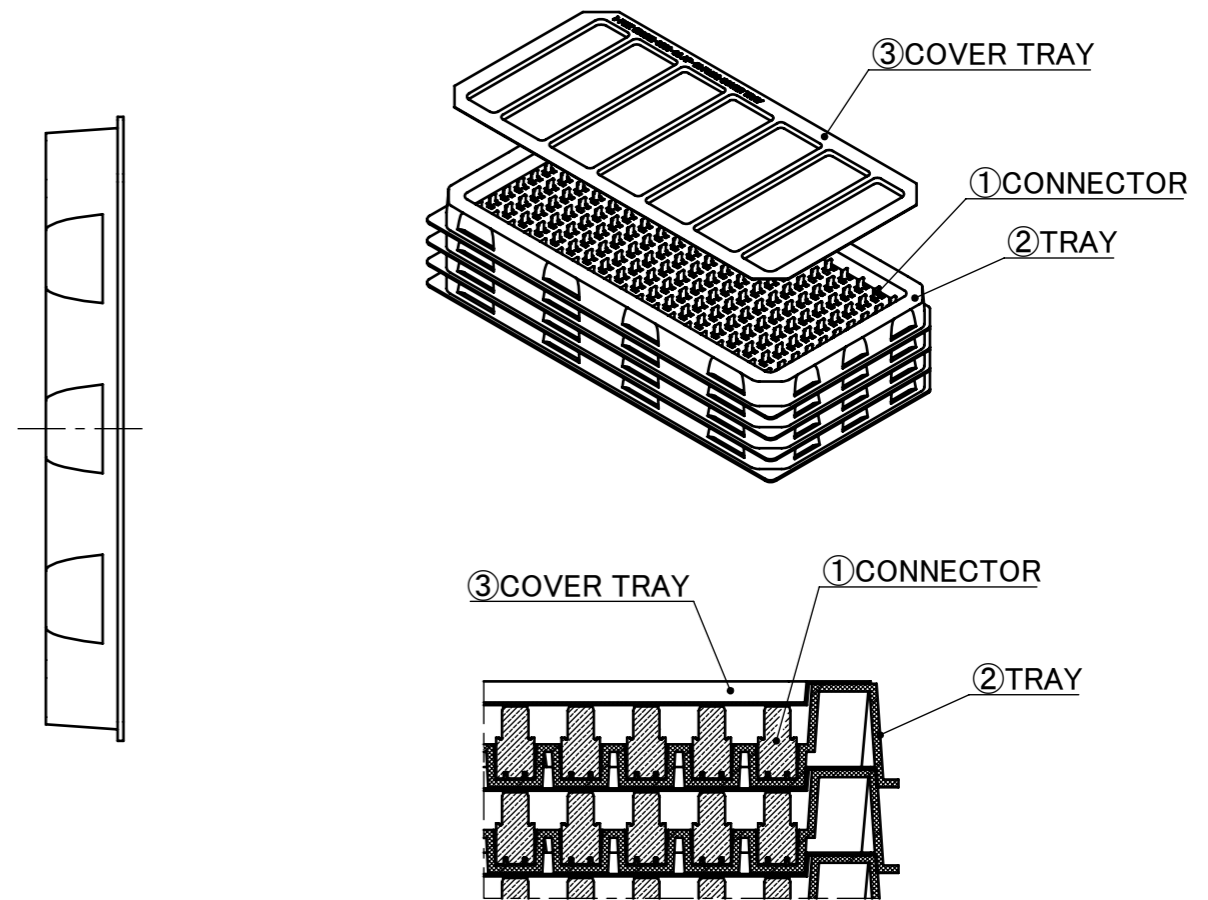
IATF 16949 Cetified [Planned]



DETAIL Y
S = 2 / 1



SECT. X-X
S = 1 / 1



PILED TRAY CONDITION

NOTES.

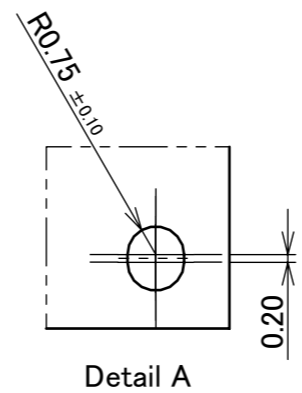
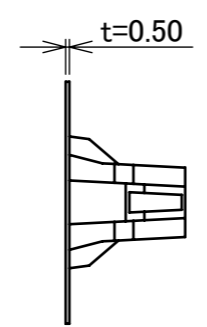
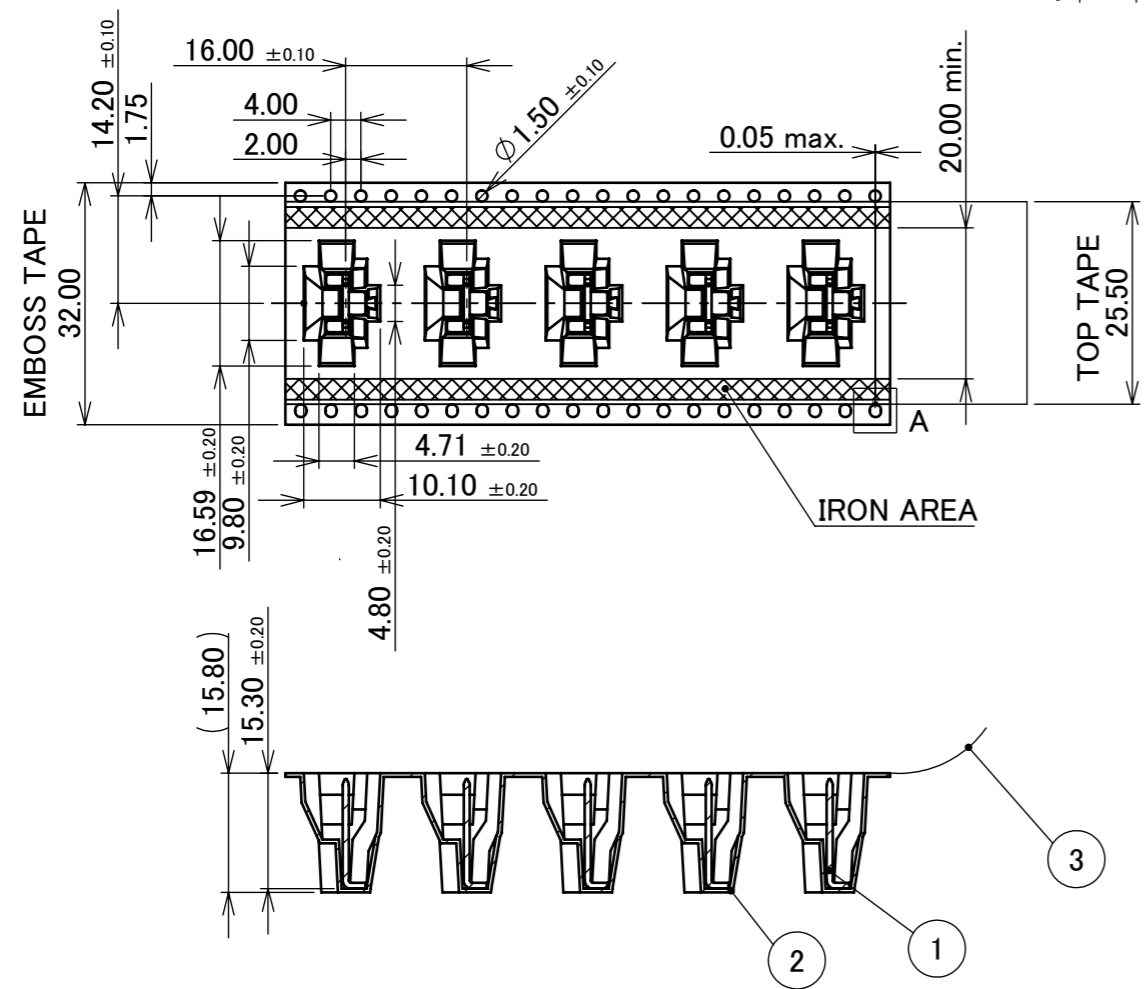
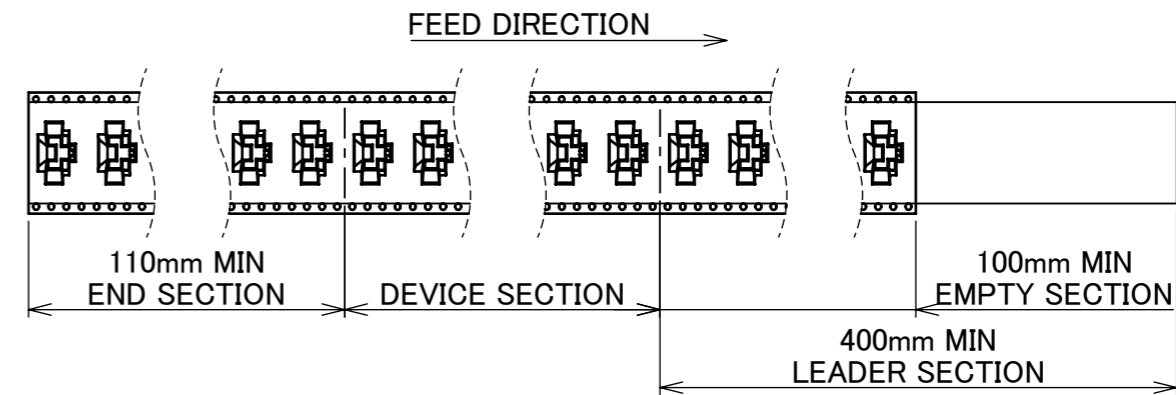
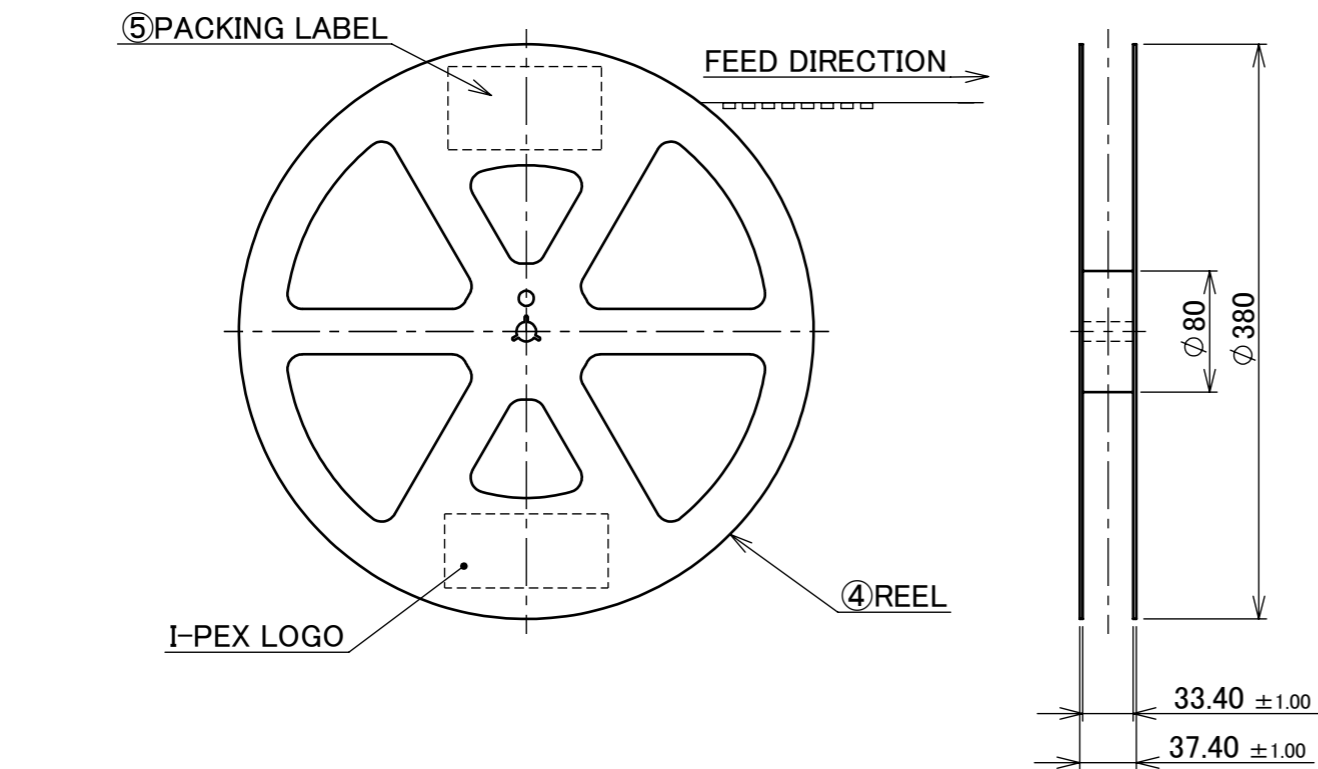
2. TRAY MATERIAL SURFACE RESISTIVITY UNDER $10^{10} \Omega / \text{sq} .$

NO.	DESCRIPTION	MATERIAL	REMARKS
3	COVER TRAY	PS t=0.50mm	WHITE
2	TRAY	PS t=1.50mm	WHITE
1	CONNECTOR	BRASS	-

ANGLE	$\pm 2^\circ$	6 OVER 30 MAX.	± 0.3	PROJECTION 	SERIES No. R2	CUSTOMER COPY		
6 MAX.	± 0.2	30 OVER 120 MAX.	± 0.5					
GENERAL TOLERANCE.				TITLE	SCALE	I-PEX		
DWG.	DATE	AP-10 PLUG 14.5mm		1:2				
CHK.		DWG. No.		UNIT	mm			
APP.		3539		A3				
				SIZE	SHEET	REV.		
				A3	4/5	3		

PART NO.	QTY. PER EMBOSS REEL (PIECES / REEL)	QTY. PER PACKING CARTON (REELS / CARTON)
3539-0001-45E	350 PIECES / REEL	4 REELS / CARTON = 1,400 PIECES

IATF 16949 Cetified [Planned]



- NOTES.
- TAPING SPECIFICATION FOLLOWS JIS C 0806 (IEC 60286-3).
 - MAKE EMPTY SECTION OF LEADER AND END ON EACH END OF THE TAPE.
 - TOP TAPE SHALL NOT STICK OUT FROM EMBOSS TAPE.
 - TOP TAPE SHALL NOT COVER FEED HOLE.

NO.	DESCRIPTION	MATERIAL	FINISH, REMARKS
5	PACKING LABEL	-	-
4	REEL	PS	BLACK
3	TOP TAPE	PET	ANTI-STATIC TYPE
2	EMBOSS TAPE	PS	ANTI-STATIC TYPE
1	CONNECTOR	COPPER ALLOY	-

ANGLE	±2°	6 OVER 30 MAX.	±0.3	PROJECTION ⊕	SERIES No. R2	CUSTOMER COPY		
6 MAX.	±0.2	30 OVER 120 MAX.	±0.5					
GENERAL TOLERANCE.				TITLE AP-10 PLUG 14.5mm	SCALE 5:1	UNIT I-PEX		
DWG.	DATE							
CHK.								
APP.								
				DWG. No.	3539	SIZE A3	SHEET 5/5	REV. 3