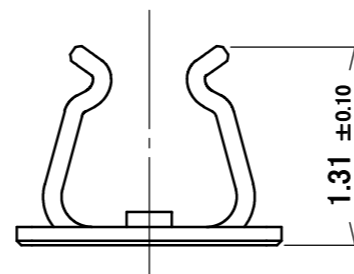
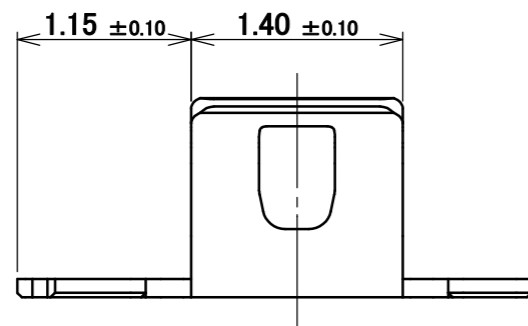
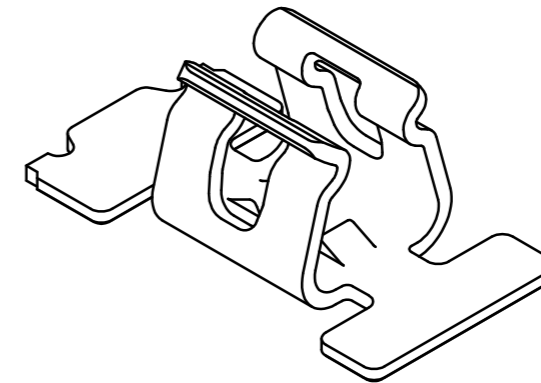
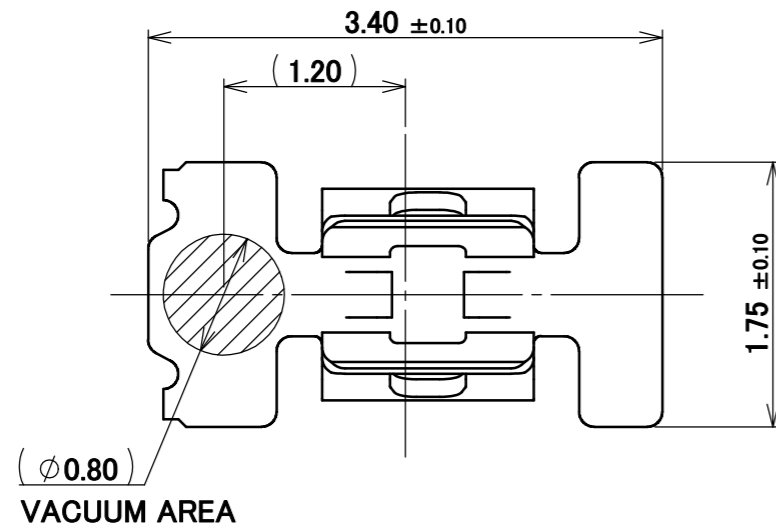
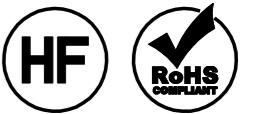


PART NO.

3182-0001

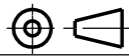


NOTE.  
1. RECOMMENDED VACUUME NOZZLE SIZE :  $\phi 0.5$

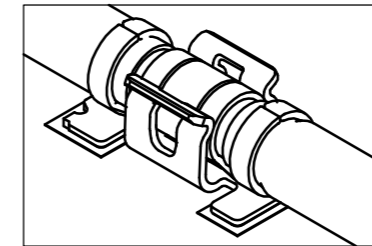
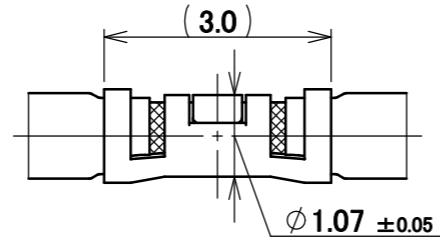
NO.	DESCRIPTION	MATERIAL	FINISH , REMARKS
1	MP-A02	PHOSPHOR BRONZE	CONTACT PART Sn 2.00 $\mu$ m MIN. OVER Ni 1.00 $\mu$ m MIN. SOLDERING PART Sn 1.00 $\mu$ m MIN.OVER Ni 0.50 $\mu$ m MIN.

					ANGLE	$\pm 2^\circ$	6 OVER 30 MAX.	$\pm 0.3$	PROJECTION	SERIES No.	CUSTOMER COPY	
					6 MAX.	$\pm 0.2$	30 OVER 120 MAX.	$\pm 0.5$		R0	I-PEX	
					GENERAL TOLERANCE.				TITLE		SCALE	I-PEX
2	Z180773	S.K	2018/09/20	Ken	DWG.	DATE		MP-A02		20:1		
1	Z150503	S.S	2015/05/11	Tom	S.Suzuki	2015/02/25				UNIT		
0	Z150213	S.S	2015/02/25		CHK.	DATE				mm		
REV.	ECN	BY	DATE	APP.	APP.	DATE		DWG. No.		SIZE	SHEET	REV.
REVISION RECORD					T.Takano	2015/02/26		3182		A3	1/5	2

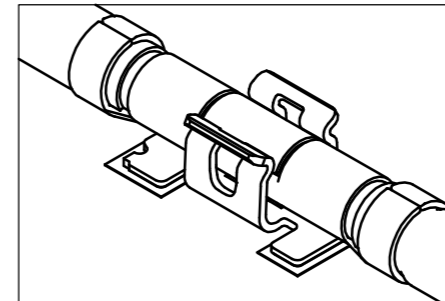
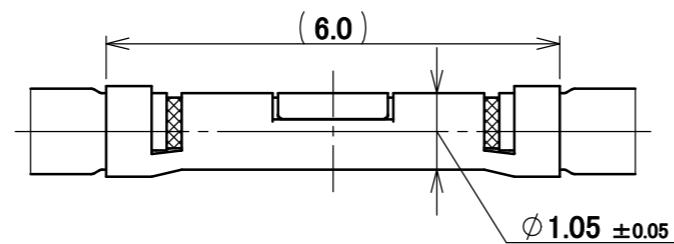
ITEMS	SPECIFICATION
APPLICABLE CONNECTOR PART No.	<ul style="list-style-type: none"> <li>•CABLE CLAMP (3mm) FOR <math>\Phi</math> 1.13 COAXIAL CABLE (DAI-ICHI SEIKO P/N: 2912-030*)</li> <li>•CABLE CLAMP (6mm) FOR <math>\Phi</math> 1.13 COAXIAL CABLE (DAI-ICHI SEIKO P/N: 2912-060*)</li> <li>•CABLE JACKET (OUTSIDE DIAMETER <math>\Phi</math> 1.13 +0.08/-0.05) OF <math>\Phi</math> 1.13 COAXIAL CABLE (*1) *1...RF-MF50161 (NISSEI ELECTRIC CO., LTD.)</li> </ul>
OPERATING TEMPERATURE	233~358K(-40°C~+85°C)
OPERATING HUMIDITY	85% MAX.(NON-CONDENSING)
CONTACT RESISTANCE	INITIAL : 70mohm MAX. / AFTER TEST : 70mohm MAX.
DURABILITY	5 CYCLES
MATING FORCE (INITIAL / AFTER TEST)	INITIAL : 25N MAX. / AFTER TEST : 25N MAX.
UNMATING FORCE (INITIAL / AFTER TEST)	INITIAL : 2N MIN. / AFTER TEST : 1N MIN.
PRODUCT SPECIFICATION	PRS-2082
TEST REPORT	TR-15034
PACKING STANDARD	PST-15054
INSTRUCTION MANUAL	HIM-15008

ANGLE	$\pm 2^\circ$	6 OVER 30 MAX.	$\pm 0.3$	PROJECTION 	SERIES No. <b>R0</b>	CUSTOMER COPY
6 MAX.	$\pm 0.2$	30 OVER 120 MAX.	$\pm 0.5$			
GENERAL TOLERANCE.				TITLE <b>MP-A02</b>	SCALE -	UNIT <b>mm</b>
DWG.	DATE					
CHK.	DATE					
APP.	DATE					
				DWG. No.	<b>3182</b>	SIZE <b>A3</b>
				SHEET <b>2/5</b>		REV. <b>2</b>

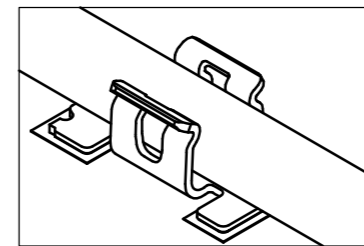
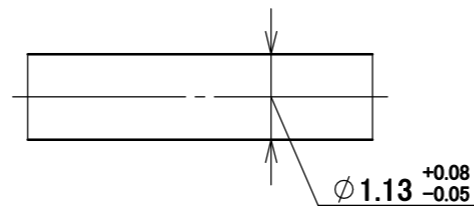
①  $\Phi$  1.13 COAXIAL CABLE WITH 3mm CABLE CLAMP (P/N : 2912-0302)



②  $\Phi$  1.13 COAXIAL CABLE WITH 6mm CABLE CLAMP (P/N : 2912-0602)



③  $\Phi$  1.13 COAXIAL CABLE

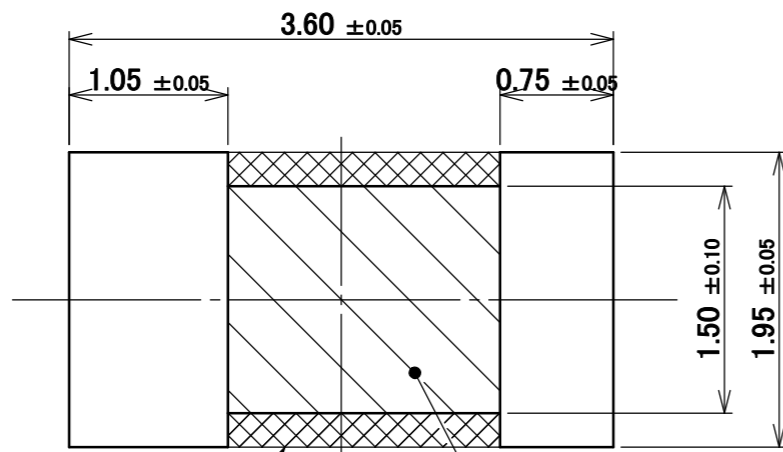


APPLICABLE CABLE

MATING CONDITION

NOTE.  
2. ONLY A SIMILAR CABLE IS REPLACEABLE.

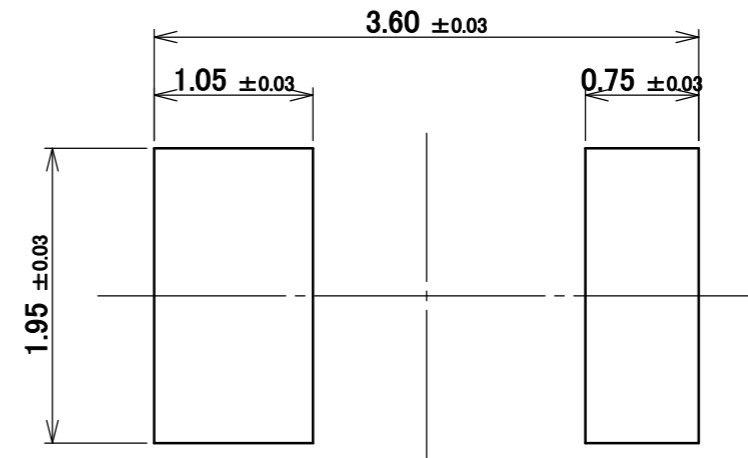
ANGLE	$\pm 2^\circ$	6 OVER 30 MAX.	$\pm 0.3$	PROJECTION 	SERIES No. R0	CUSTOMER COPY	
6 MAX.	$\pm 0.2$	30 OVER 120 MAX.	$\pm 0.5$				
GENERAL TOLERANCE.				TITLE MP-A02	SCALE 10:1	UNIT mm I-PEX	
DWG.	DATE						
CHK.	DATE						
APP.	DATE						
				DWG. No.	3182	SIZE A3	SHEET 3/5 REV. 2



SEE NOTE. 4

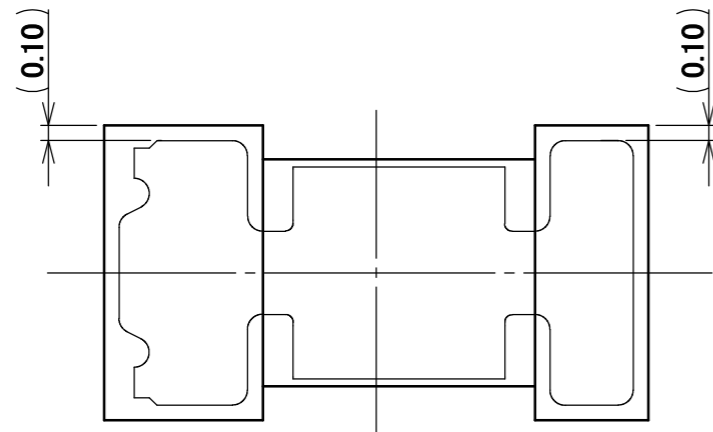
SEE NOTE. 3

**RECOMMENDED FOOTPRINT PATTERN**

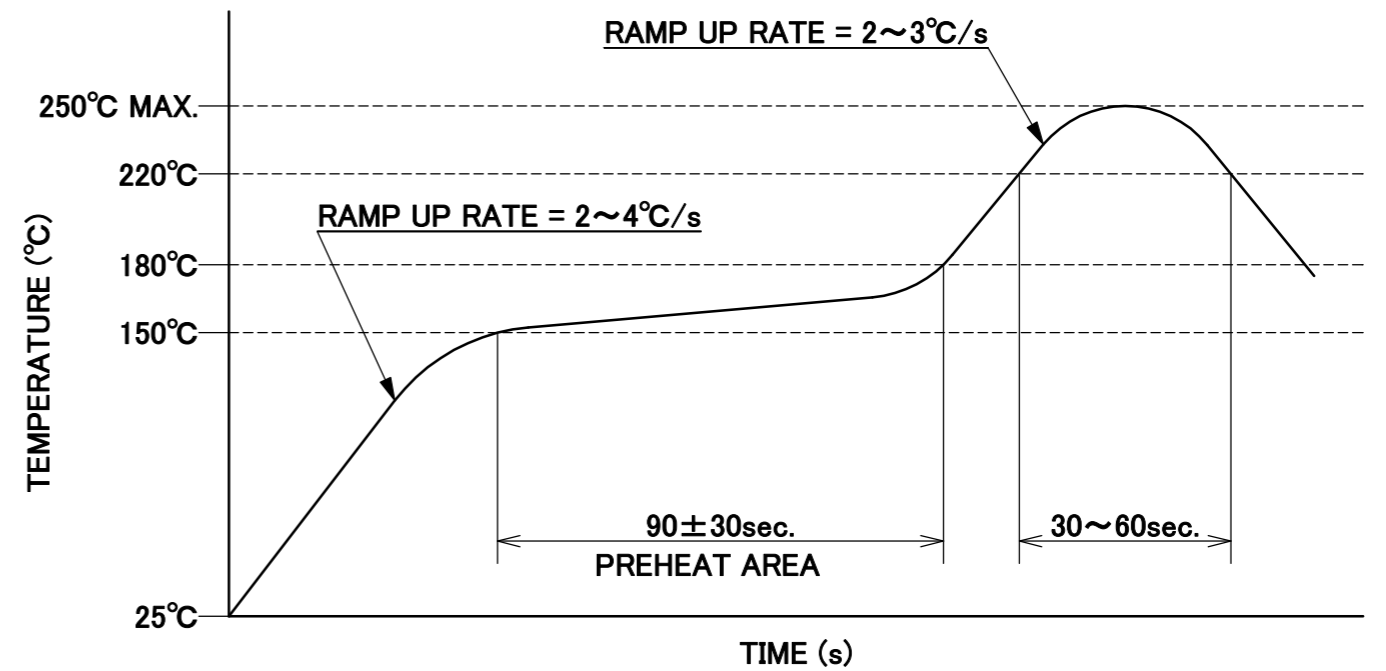


THICKNESS: 0.10mm

**METAL MASK**



**CONNECTOR ON RECOMMENDED FOOTPRINT PATTERN**

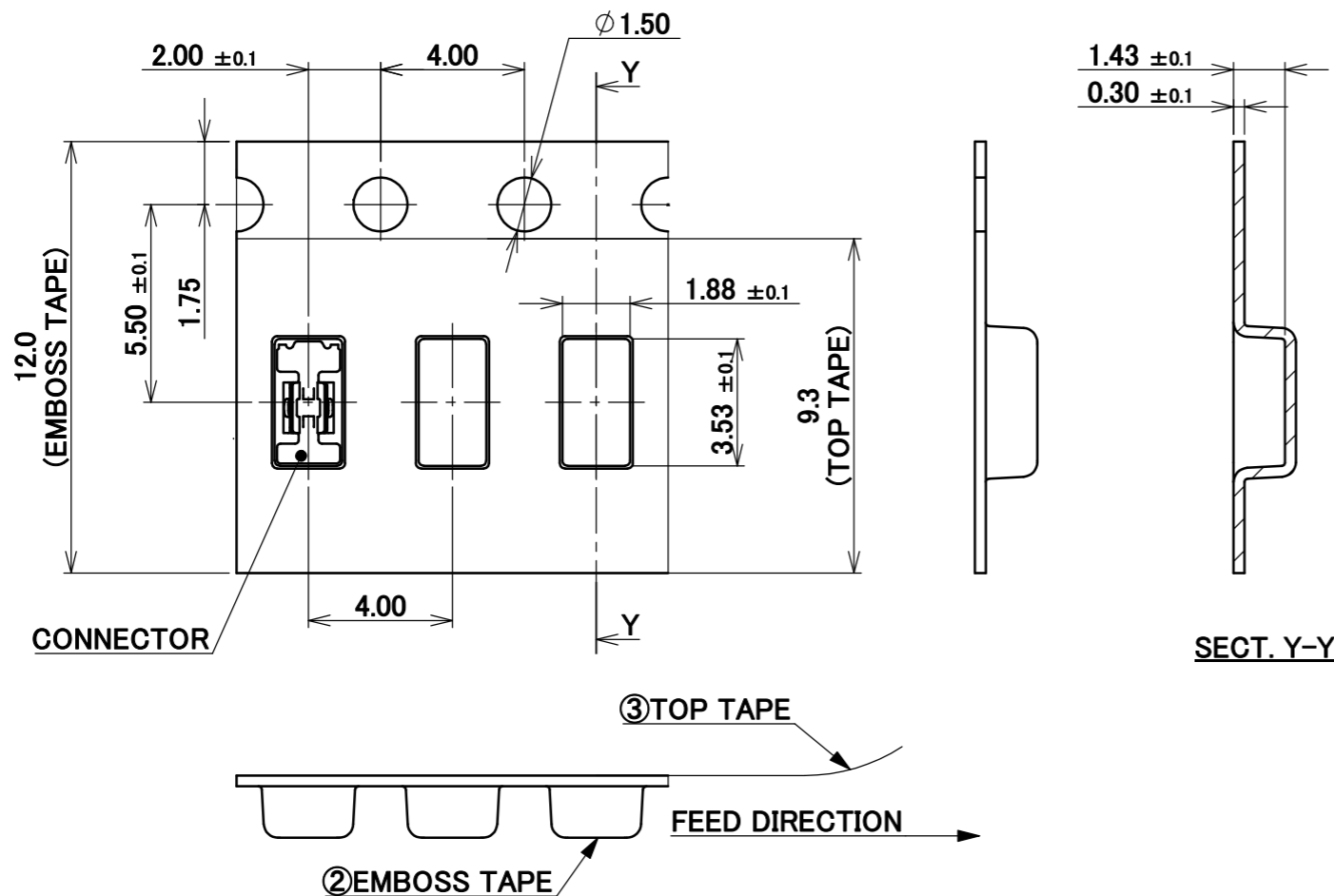
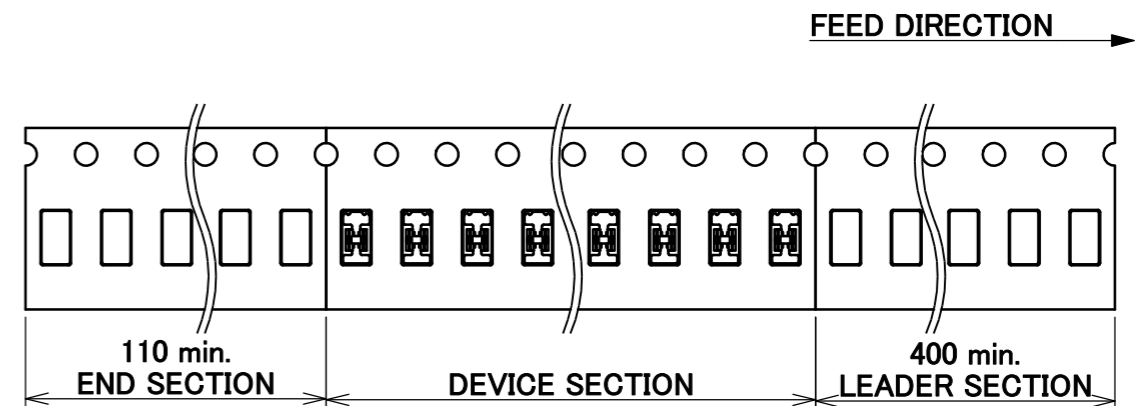
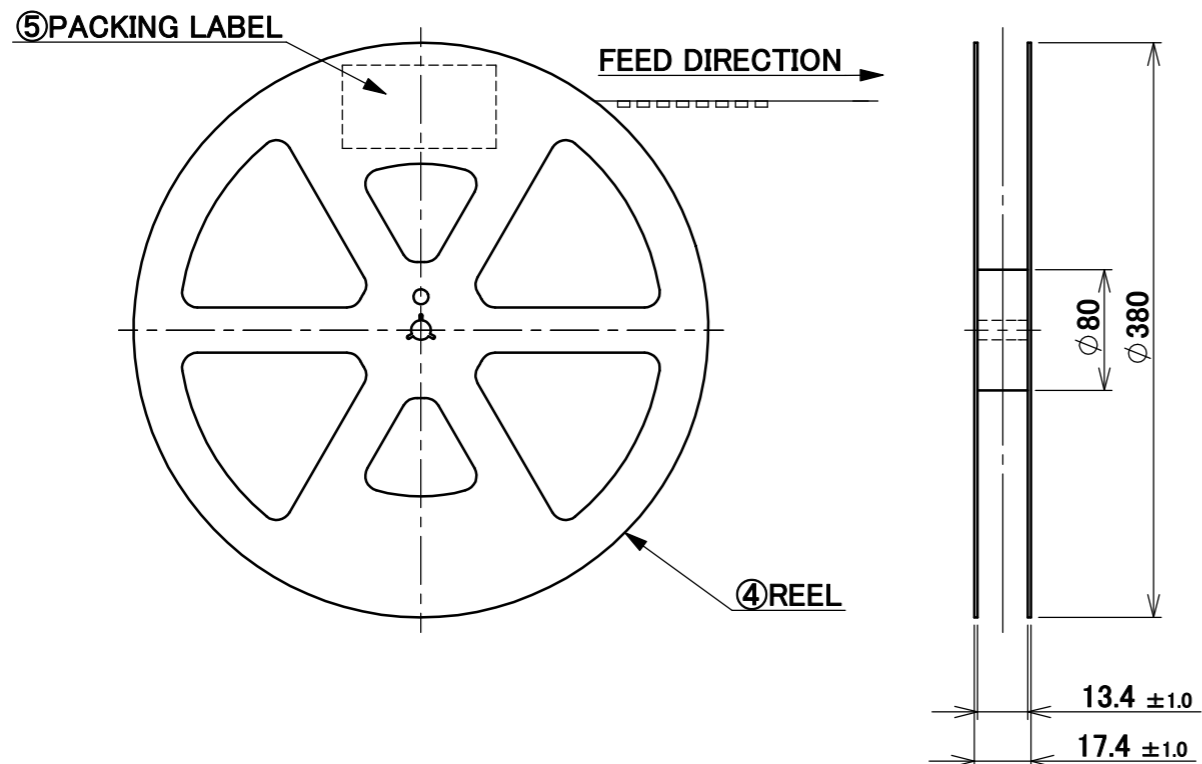


**REFLOW TEMPERATURE PROFILE**  
**SENJU METAL INDUSTRY CO., LTD. : M705-SHF(Sn96.5 Ag3.0 Cu0.5)**

- NOTES.  
 3. PATTERN AND RESIST PROHIBITION AREA.  
 4. THIS AREA CANNOT MOUNT ANOTHER COMPONENTS.

ANGLE	±2°	6 OVER 30 MAX.	±0.3	PROJECTION ⊕	SERIES No. R0	CUSTOMER COPY
6 MAX.	±0.2	30 OVER 120 MAX.	±0.5			
GENERAL TOLERANCE.				TITLE	SCALE 20:1 UNIT mm SIZE A3	I-PEX
DWG.	DATE			MP-A02		
CHK.	DATE					
APP.	DATE			DWG. No. 3182		
						SHEET 4/5 REV. 2

PART NO.	QTY. PER EMBOSS REEL (PIECES / REEL)	QTY. PER PACKING CARTON (REELS / CARTON)
3182-0001	10,000 / REEL	10 REELS / CARTON = 100,000



SECT. Y-Y

NOTES.

5. TAPING SPECIFICATION FOLLOWS JIS C 0806 (IEC 60286-3).
6. MAKE EMPTY SECTION OF LEADER AND END ON EACH END OF THE TAPE.
7. TOP TAPE SHALL NOT STICK OUT FROM EMBOSS TAPE.
8. TOP TAPE SHALL NOT COVER FEED HOLE.

NO.	DESCRIPTION	MATERIAL	FINISH, REMARKS
5	PACKING LABEL	-	-
4	REEL	PS	ANTI-STATIC TYPE BLACK
3	TOP TAPE	PET t=0.062 TRANSPARENCY	ANTI-STATIC TYPE
2	EMBOSS TAPE	PS t=0.3 TRANSPARENCY	ANTI-STATIC TYPE

ANGLE	±2°	6 OVER 30 MAX.	±0.3	PROJECTION ⊕	SERIES No. R0	CUSTOMER COPY
6 MAX.	±0.2	30 OVER 120 MAX.	±0.5			
GENERAL TOLERANCE.				TITLE	SCALE X:1 UNIT mm SIZE A3	I-PEX
DWG.	DATE			MP-A02		
CHK.	DATE					
APP.	DATE			DWG. No. 3182		
					SHEET	5/5
					REV.	2