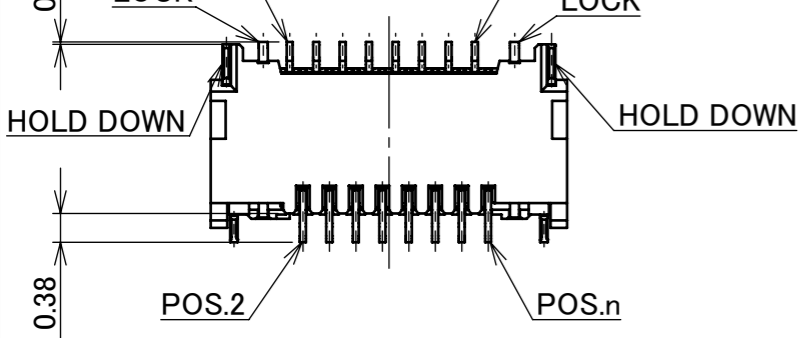
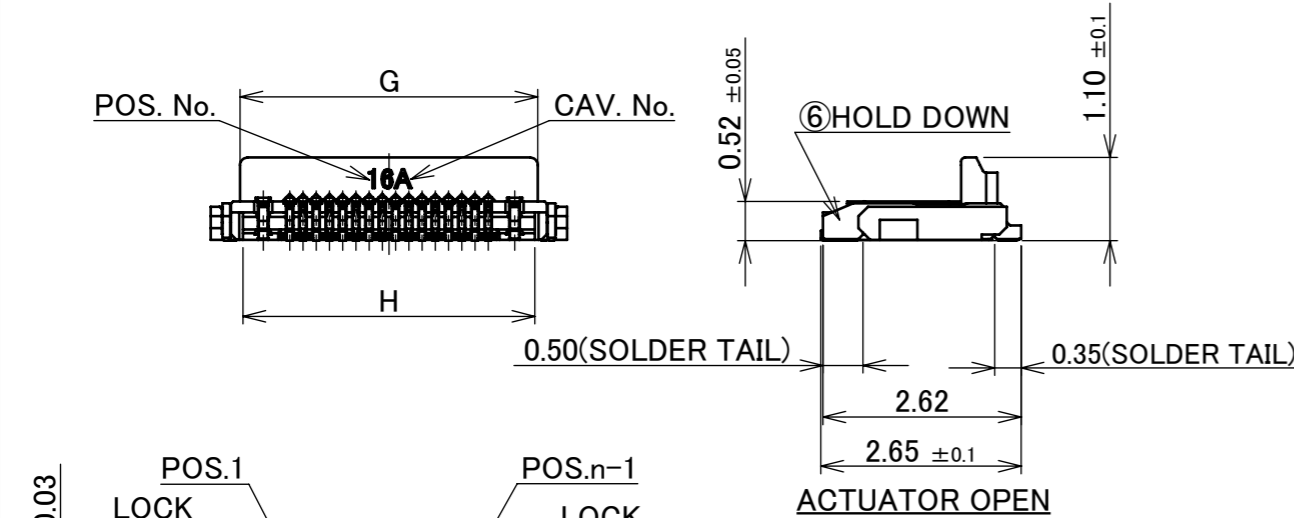
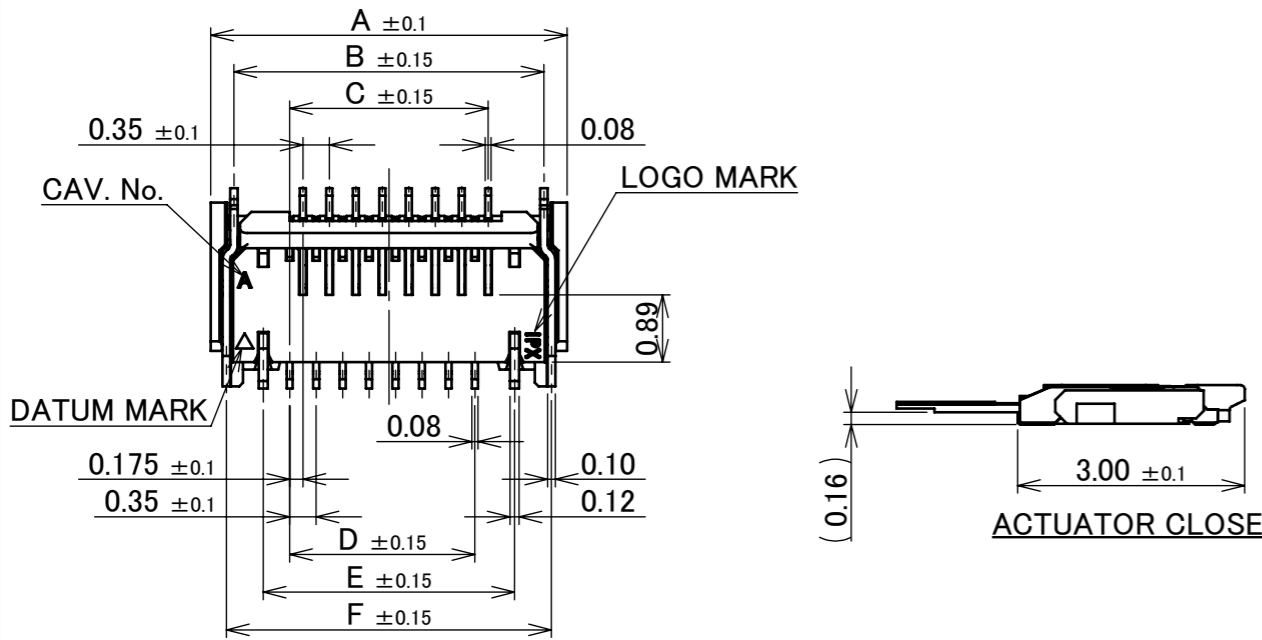


Recommended P/N 20622-0**E-02

PART NO.	Pos.	A	B	C	D	E	F	G	H
◆20622-008E-0#	8	3.315	2.700	1.225	1.050	1.925	2.900	2.540	2.460
◆20622-010E-0#	10	3.665	3.050	1.575	1.400	2.275	3.250	2.890	2.810
◆20622-012E-0#	12	4.015	3.400	1.925	1.750	2.625	3.600	3.240	3.160
◆20622-014E-0#	14	4.365	3.750	2.275	2.100	2.975	3.950	3.590	3.510
20622-016E-0#	16	4.715	4.100	2.625	2.450	3.325	4.300	3.940	3.860
◆20622-018E-0#	18	5.065	4.450	2.975	2.800	3.675	4.650	4.290	4.210
◆20622-020E-0#	20	5.415	4.800	3.325	3.150	4.025	5.000	4.640	4.560
◆20622-022E-0#	22	5.765	5.150	3.675	3.500	4.375	5.350	4.990	4.910
◆20622-024E-0#	24	6.115	5.500	4.025	3.850	4.725	5.700	5.340	5.260
◆20622-026E-0#	26	6.465	5.850	4.375	4.200	5.075	6.050	5.690	5.610
◆20622-028E-0#	28	6.815	6.200	4.725	4.550	5.425	6.400	6.040	5.960
◆20622-030E-0#	30	7.165	6.550	5.075	4.900	5.775	6.750	6.390	6.310

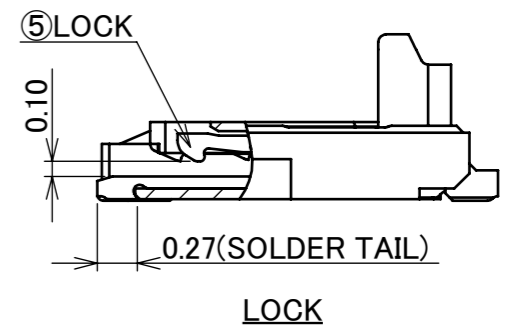
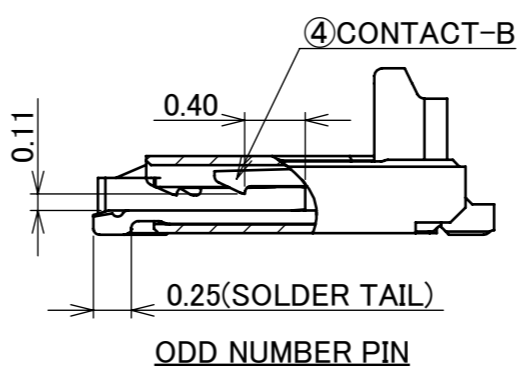
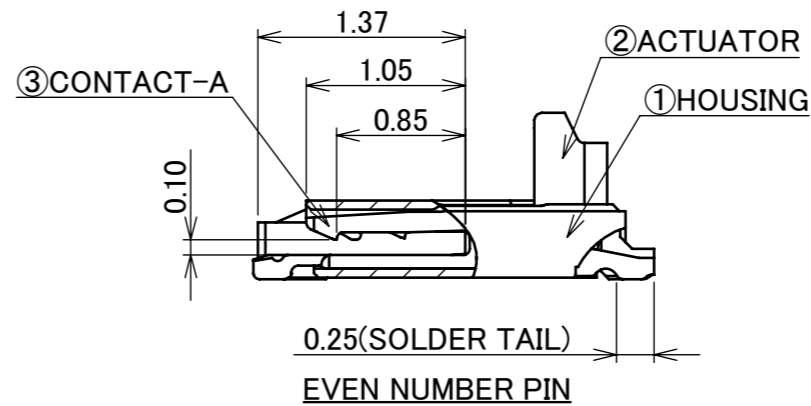
◆MARK MEANS NOT AVAILABLE



P/N : 20622- 0 ** E- 0 #

1 : HOUSING COLOR : BLACK
2 : HOUSING COLOR : BEIGE

POS.



NOTES.
1. CONTACT POINT : ONLY TOP CONTACT

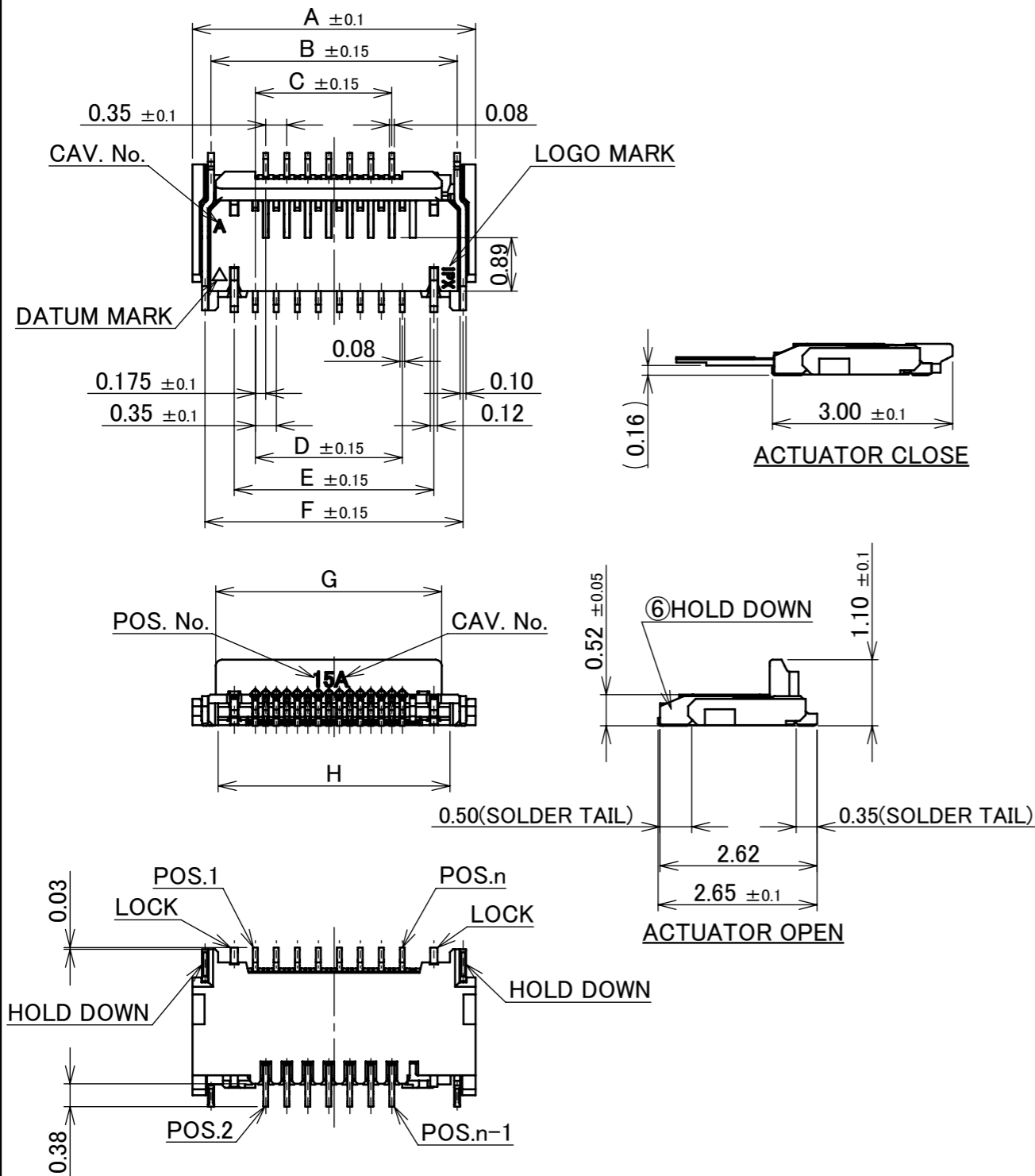
EVEN NUMBER POSITION

6	HOLD DOWN	PHOSPHOR BRONZE	SOLDERING AREA : Au 0.02 μ m MIN. OVER Ni 1.00 μ m MIN.
5	LOCK	PHOSPHOR BRONZE	ALL OVER Ni 1.00 μ m MIN. SOLDERING AREA : Au 0.03 μ m MIN.
4	CONTACT-B	PHOSPHOR BRONZE	CONTACT AREA : Au 0.10 μ m MIN. OVER Ni 1.00 μ m MIN. SOLDERING AREA : Au 0.03 μ m MIN. OVER Ni 1.00 μ m MIN.
3	CONTACT-A	PHOSPHOR BRONZE	CONTACT AREA : Au 0.10 μ m MIN. OVER Ni 1.00 μ m MIN. SOLDERING AREA : Au 0.03 μ m MIN. OVER Ni 1.00 μ m MIN.
2	ACTUATOR	LCP	UL94V-0, BLACK
1	HOUSING	LCP	UL94V-0, BLACK or BEIGE
NO.	DISCRIPTION	MATERIAL	FINISH , REMARKS

5	Z191259	S.Sh	Oct./10/'19	H.I	ANGLE	±2°	6 OVER 30 MAX.	±0.3	PROJECTION	SERIES No. R6	CUSTOMER COPY
4	Z180958	K.B	July/20/'18	Y.S	6 MAX.	±0.2	30 OVER 120 MAX.	±0.5			
3	Z161033	T.T	Aug./22/'16	J.T	GENERAL TOLERANCE.			TITLE MINIFLEX® 175-ST	SCALE 10:1	UNIT mm	I-PEX
2	Z150546	K.O	July/31/'15	E.K	DWG.	DATE					
1	Z141394	H.I	Dec./05/'14	E.K	K.Ozeki	2014/10/06		DWG. No. 20622	SIZE A3	SHEET 1/7	REV. 5
0	Z141145	K.O	Oct./06/'14	J.Tateishi	CHK.	DATE					
REV.	ECN	BY	DATE	APP.	E.Kawabe	2014/10/06					

P/N	Pos	A	B	C	D	E	F	G	H
◆20622-007E-0#	7	3.140	2.525	0.875	1.050	1.750	2.725	2.365	2.285
◆20622-009E-0#	9	3.490	2.875	1.225	1.400	2.100	3.075	2.715	2.635
◆20622-011E-0#	11	3.840	3.225	1.575	1.750	2.450	3.425	3.065	2.985
◆20622-013E-0#	13	4.190	3.575	1.925	2.100	2.800	3.775	3.415	3.335
◆20622-015E-0#	15	4.540	3.925	2.275	2.450	3.150	4.125	3.765	3.685
◆20622-017E-0#	17	4.890	4.275	2.625	2.800	3.500	4.475	4.115	4.035
20622-019E-0#	19	5.240	4.625	2.975	3.150	3.850	4.825	4.465	4.385
◆20622-021E-0#	21	5.590	4.975	3.325	3.500	4.200	5.175	4.815	4.735
◆20622-023E-0#	23	5.940	5.325	3.675	3.850	4.550	5.525	5.165	5.085
◆20622-025E-0#	25	6.290	5.675	4.025	4.200	4.900	5.875	5.515	5.435
◆20622-027E-0#	27	6.640	6.025	4.375	4.550	5.250	6.225	5.865	5.785
◆20622-029E-0#	29	6.990	6.375	4.725	4.900	5.600	6.575	6.215	6.135
◆20622-031E-0#	31	7.340	6.725	5.075	5.250	5.950	6.925	6.565	6.485

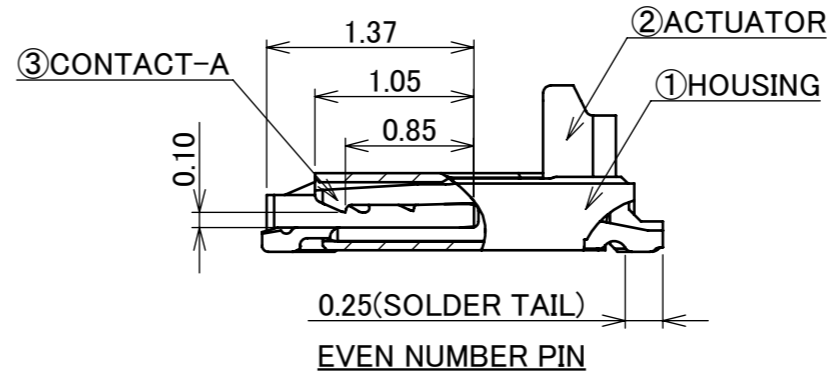
◆ MARK MEANS NOT AVAILABLE



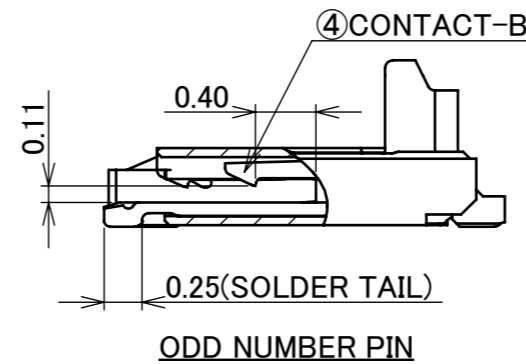
P/N : 20622- 0 ** E- 0 #

1 : HOUSING COLOR : BLACK
2 : HOUSING COLOR : BEIGE

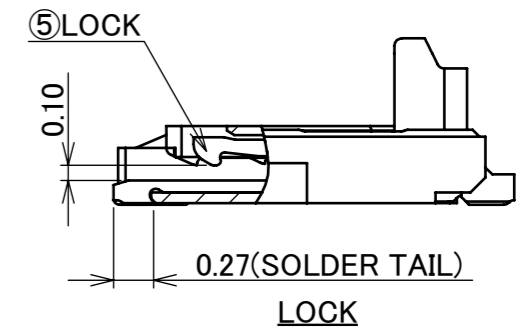
POS.



EVEN NUMBER PIN



ODD NUMBER PIN



LOCK

NOTES.
1. CONTACT POINT : ONLY TOP CONTACT

ODD NUMBER POSITION

6	HOLD DOWN	PHOSPHOR BRONZE	SOLDERING AREA : Au 0.02 μ m MIN. OVER Ni 1.00 μ m MIN.
5	LOCK	PHOSPHOR BRONZE	ALL OVER Ni 1.00 μ m MIN. SOLDERING AREA : Au 0.03 μ m MIN.
4	CONTACT-B	PHOSPHOR BRONZE	CONTACT AREA : Au 0.10 μ m MIN. OVER Ni 1.00 μ m MIN. SOLDERING AREA : Au 0.03 μ m MIN. OVER Ni 1.00 μ m MIN.
3	CONTACT-A	PHOSPHOR BRONZE	CONTACT AREA : Au 0.10 μ m MIN. OVER Ni 1.00 μ m MIN. SOLDERING AREA : Au 0.03 μ m MIN. OVER Ni 1.00 μ m MIN.
2	ACTUATOR	LCP	UL94V-0, BLACK
1	HOUSING	LCP	UL94V-0, BLACK or BEIGE
NO.	DISCRIPTION	MATERIAL	FINISH , REMARKS

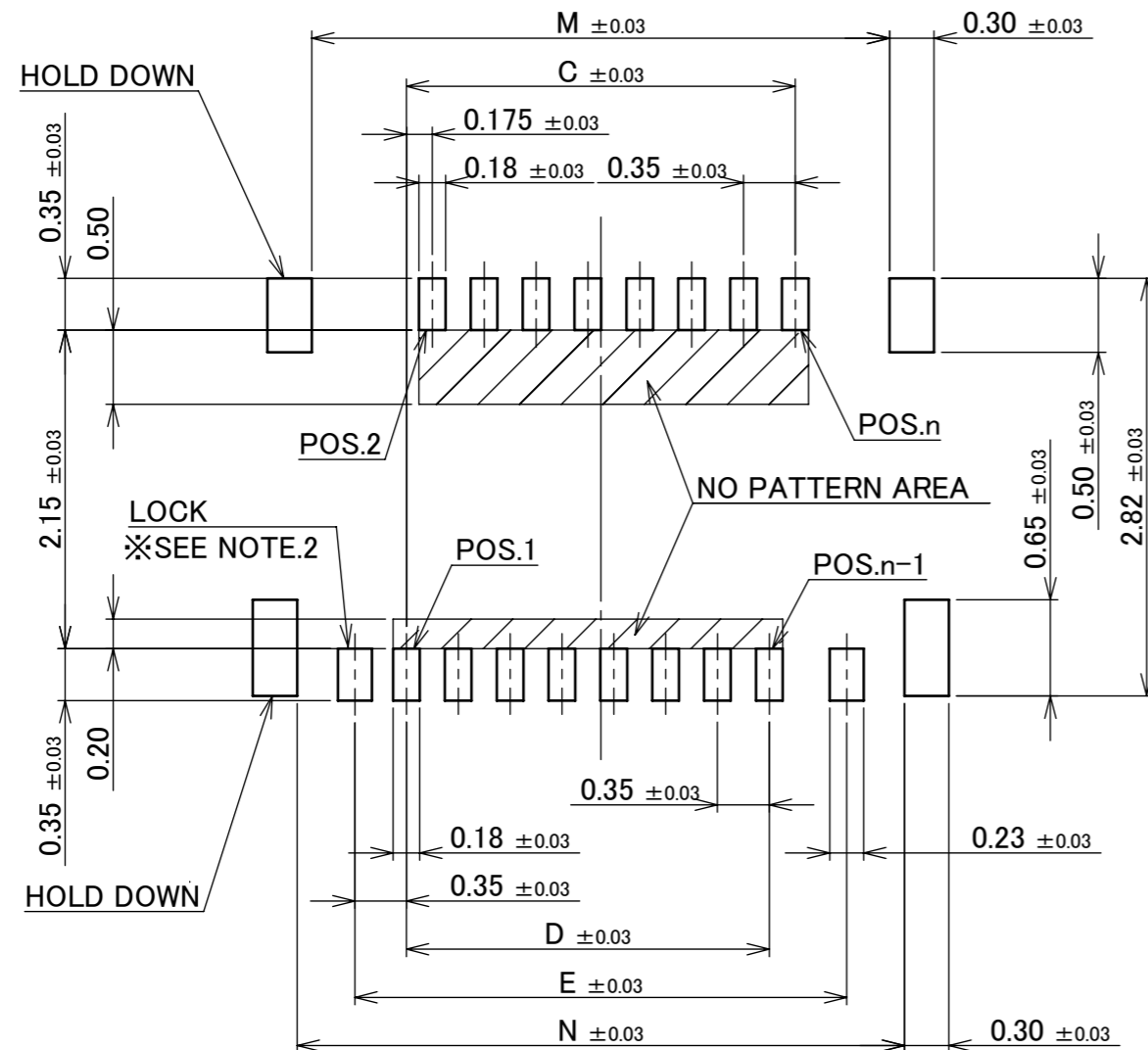
ANGLE	±2°	6 OVER 30 MAX.	±0.3	PROJECTION ①	SERIES No. R6	CUSTOMER COPY
	6 MAX.	±0.2	30 OVER 120 MAX.			
GENERAL TOLERANCE.				TITLE	SCALE 10:1 UNIT mm SIZE A3	I-PEX SHEET 2/7 REV. 5
DWG.	DATE			MINIFLEX® 175-ST		
CHK.	DATE					
APP.	DATE			DWG. No. 20622		

ITEMS	SPECIFICATION
RATING VOLTAGE	50V AC (PER CONTACT)
RATING AMPERAGE (FOR SIGNAL CONTACT)	0.3A DC (PER CONTACT) , 6.0A DC (PER CONNECTOR)
OPERATING TEMPERATURE	233~358K (-40°C~+85°C)
OPERATING HUMIDITY	20~80%RH (NON-CONDENSING)
CONTACT RESISTANCE (FOR SIGNAL CONTACT)	INITIAL : 80mohm MAX. / AFTER TEST : \triangleleft 40mohm MAX.
INSULATION RESISTANCE	INITIAL : 100Mohm MIN. / AFTER TEST : 100Mohm MIN.
DIELECTRIC WITHSTANDING VOLTAGE	AC200V 1min
DURABILITY	20 CYCLES
ACTUATOR LOCKING FORCE (INITIAL / AFTER 20CYCLES)	16P : 5.40N MAX. 19P : 6.30N MAX.
ACTUATOR UNLOCKING FORCE (INITIAL / AFTER 20CYCLES)	16P : 0.18N MIN. 19P : 0.21N MIN.
COPLANARITY	0.10 MAX.
PRODUCT SPECIFICATION	PRS-2024
TEST REPORT	TR-15076
PACKING STANDARD	PST-15073
INSTRUCTION MANUAL	HIM-16036
APPEARANCE CRITERIA No.	QLS-A***

ANGLE	$\pm 2^\circ$	6 OVER 30 MAX.	± 0.3	PROJECTION 	SERIES No. R6	CUSTOMER COPY
6 MAX.	± 0.2	30 OVER 120 MAX.	± 0.5			
GENERAL TOLERANCE.				TITLE MINIFLEX® 175-ST	SCALE	
DWG.	DATE					
CHK.	DATE					
APP.	DATE					
				DWG. No.	20622	UNIT mm
				SIZE	A3	SHEET 3/7
						REV. 5

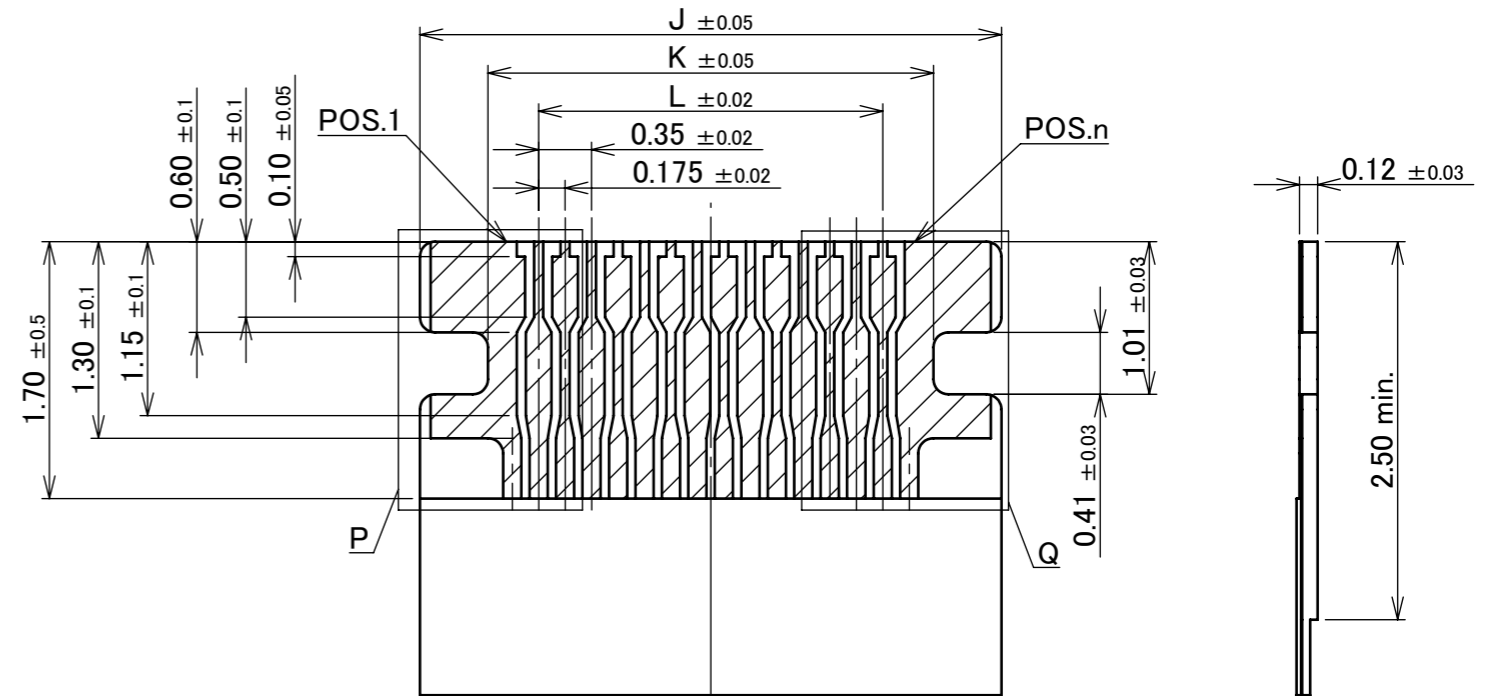
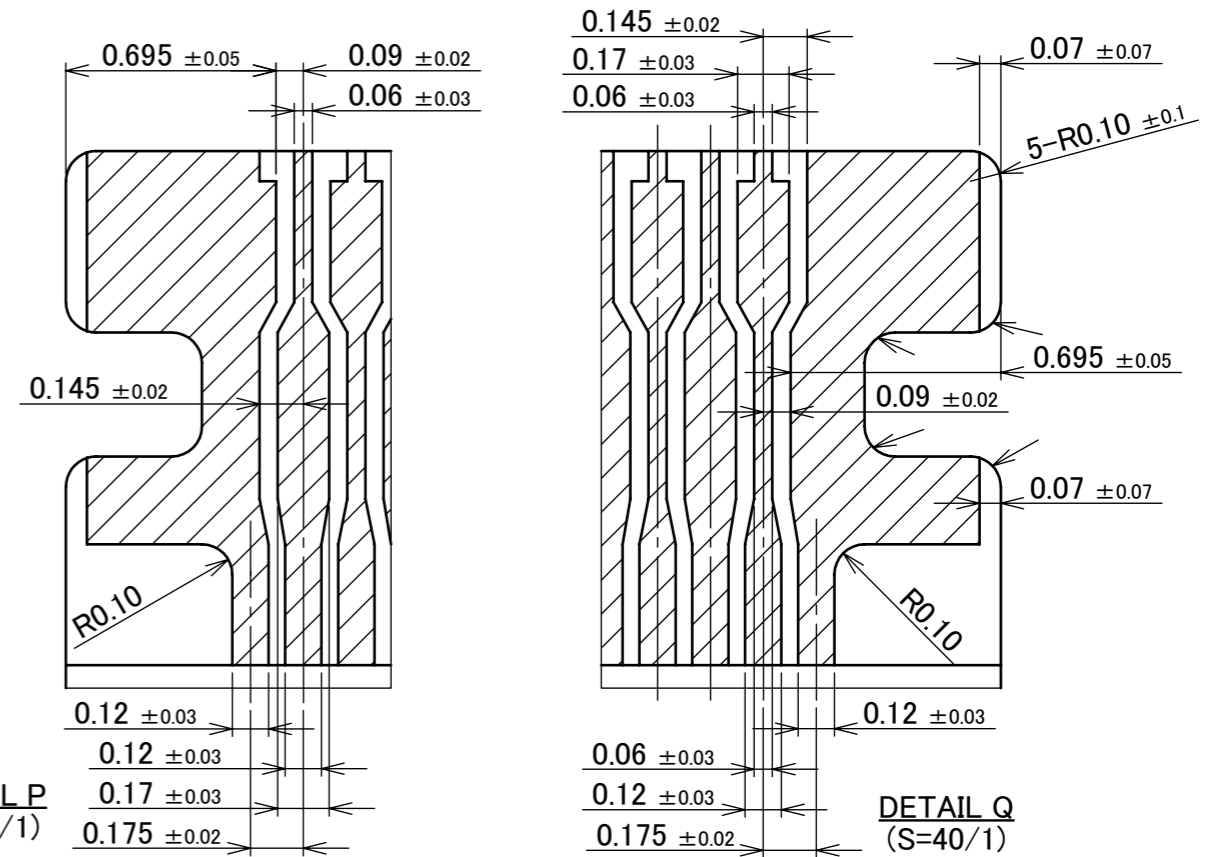
PART NO.	Pos.	C	D	E	J	K	L	M	N
◆20622-008E-0#	8	1.225	1.050	1.925	2.445	1.545	0.875	2.500	2.700
◆20622-010E-0#	10	1.575	1.400	2.275	2.795	1.895	1.225	2.850	3.050
◆20622-012E-0#	12	1.925	1.750	2.625	3.145	2.245	1.575	3.200	3.400
◆20622-014E-0#	14	2.275	2.100	2.975	3.495	2.595	1.925	3.550	3.750
20622-016E-0#	16	2.625	2.450	3.325	3.845	2.945	2.275	3.900	4.100
◆20622-018E-0#	18	2.975	2.800	3.675	4.195	3.295	2.625	4.250	4.450
◆20622-020E-0#	20	3.325	3.150	4.025	4.545	3.645	2.975	4.600	4.800
◆20622-022E-0#	22	3.675	3.500	4.375	4.895	3.995	3.325	4.950	5.150
◆20622-024E-0#	24	4.025	3.850	4.725	5.245	4.345	3.675	5.300	5.500
◆20622-026E-0#	26	4.375	4.200	5.075	5.595	4.695	4.025	5.650	5.850
◆20622-028E-0#	28	4.725	4.550	5.425	5.945	5.045	4.375	6.000	6.200
◆20622-030E-0#	30	5.075	4.900	5.775	6.295	5.395	4.725	6.350	6.550

◆MARK MEANS NOT AVAILABLE



RECOMMENDED PCB LAYOUT & METAL MASK LAYOUT
METAL MASK THICKNESS: t=0.12mm

NOTES
2.PLEASE DO NOT CONNECT THESE TWO SOLDER PADS TO THE ELECTRICAL CIRCUIT.(SIGNAL OR GROUND)



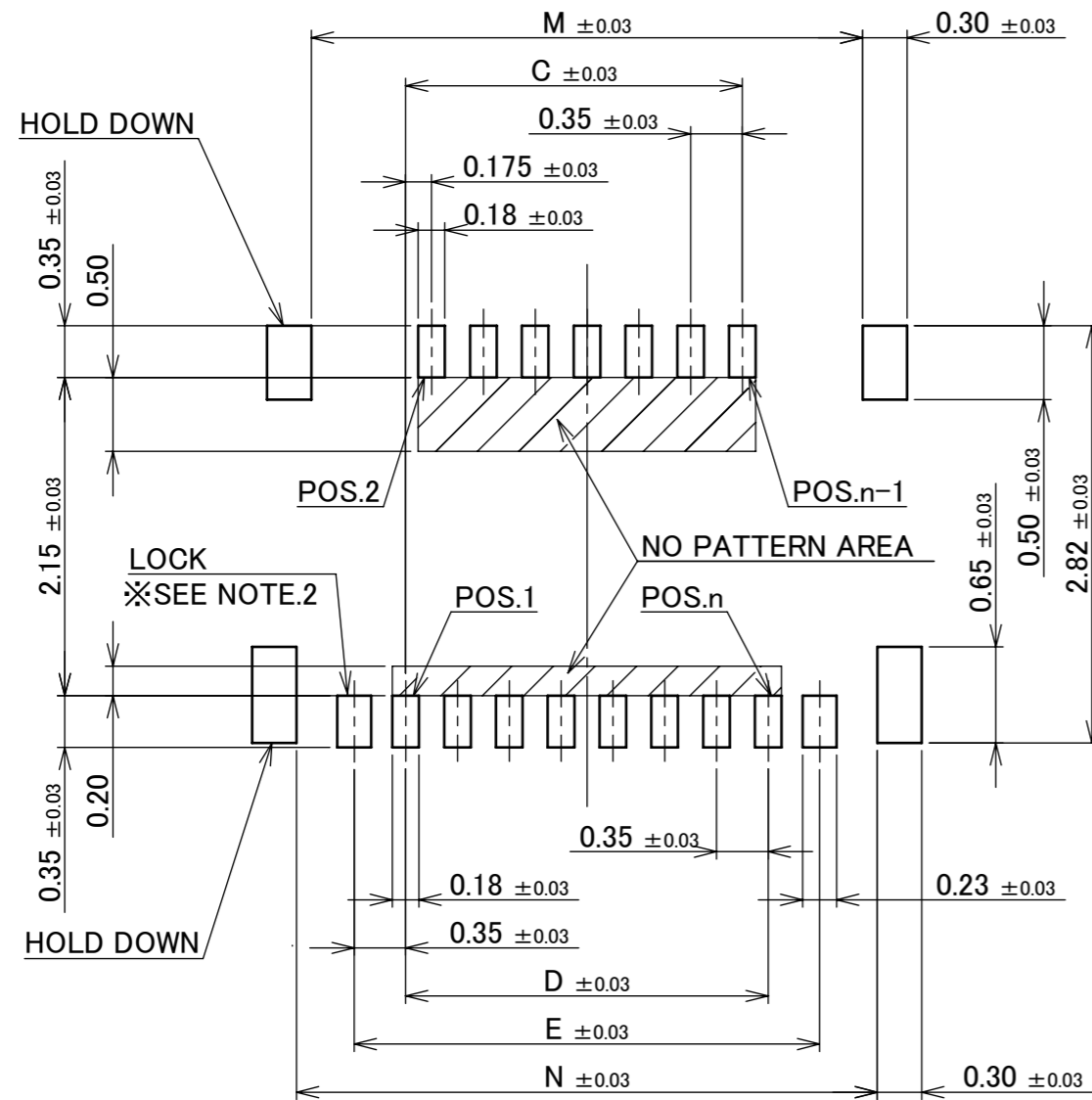
RECOMMENDED FPC LAYOUT

EVEN NUMBER POSITION

ANGLE	±2°	6 OVER 30 MAX.	±0.3	PROJECTION	SERIES No.	CUSTOMER COPY
6 MAX.	±0.2	30 OVER 120 MAX.	±0.5	⊕	R6	
GENERAL TOLERANCE.				TITLE	SCALE	I-PEX
DWG.	DATE			MINIFLEX® 175-ST	20:1	
CHK.	DATE				UNIT	
APP.	DATE			DWG. No.	mm	
				20622	SIZE	SHEET 4/7 REV. 5
					A3	

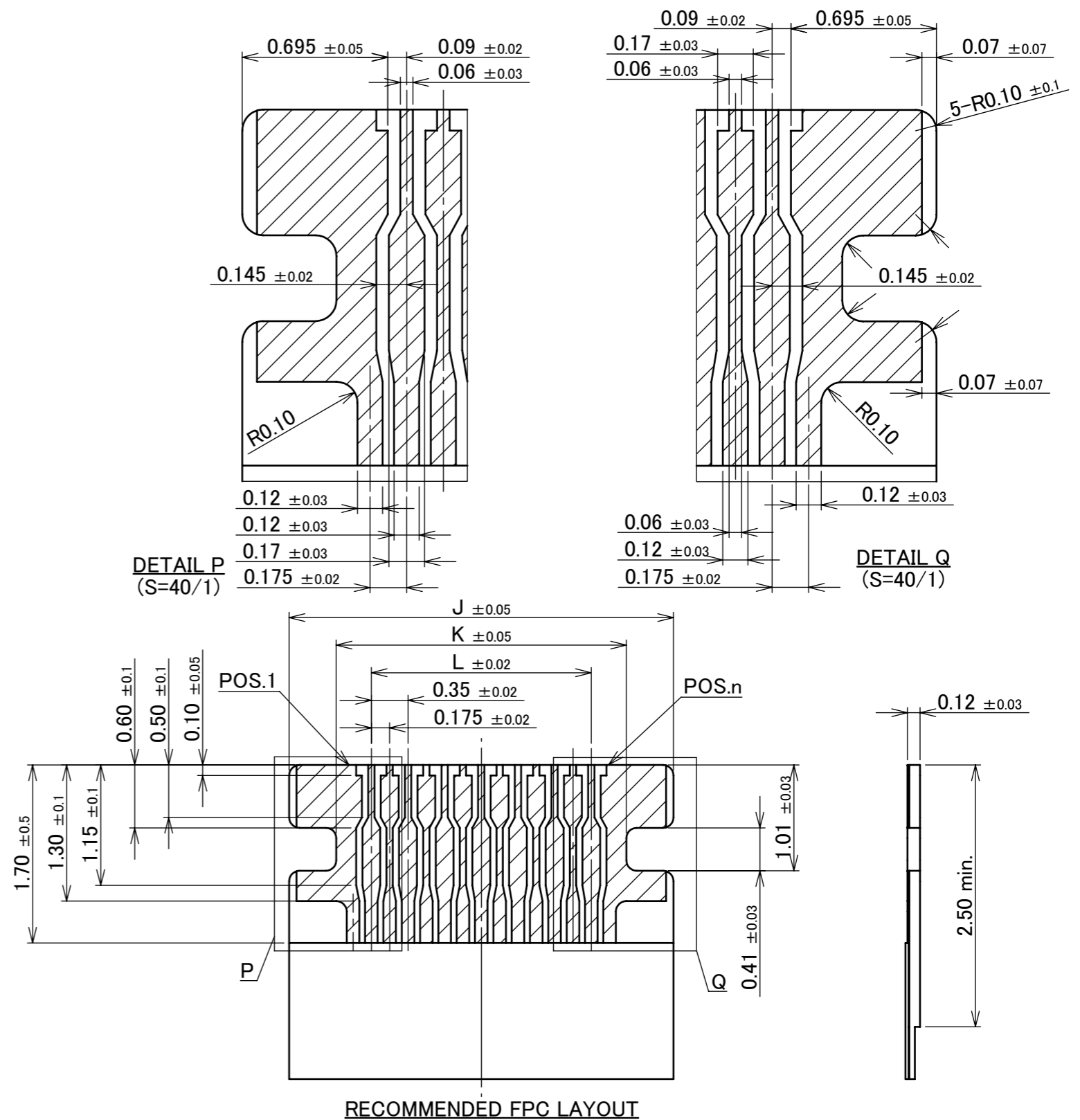
PART NO.	Pos.	C	D	E	J	K	L	M	N
◆20622-007E-0#	7	0.875	1.050	1.750	2.270	1.370	0.700	2.325	2.525
◆20622-009E-0#	9	1.225	1.400	2.100	2.620	1.720	1.050	2.675	2.875
◆20622-011E-0#	11	1.575	1.750	2.450	2.970	2.070	1.400	3.025	3.225
◆20622-013E-0#	13	1.925	2.100	2.800	3.320	2.420	1.750	3.375	3.575
◆20622-015E-0#	15	2.275	2.450	3.150	3.670	2.770	2.100	3.725	3.925
◆20622-017E-0#	17	2.625	2.800	3.500	4.020	3.120	2.450	4.075	4.275
20622-019E-0#	19	2.975	3.150	3.850	4.370	3.470	2.800	4.425	4.625
◆20622-021E-0#	21	3.325	3.500	4.200	4.720	3.820	3.150	4.775	4.975
◆20622-023E-0#	23	3.675	3.850	4.550	5.070	4.170	3.500	5.125	5.325
◆20622-025E-0#	25	4.025	4.200	4.900	5.420	4.520	3.850	5.475	5.675
◆20622-027E-0#	27	4.375	4.550	5.250	5.770	4.870	4.200	5.825	6.025
◆20622-029E-0#	29	4.725	4.900	5.600	6.120	5.220	4.550	6.175	6.375
◆20622-031E-0#	31	5.075	5.250	5.950	6.470	5.570	4.900	6.525	6.725

◆MARK MEANS NOT AVAILABLE



RECOMMENDED PCB LAYOUT & METAL MASK LAYOUT
METAL MASK THICKNESS: t=0.12mm

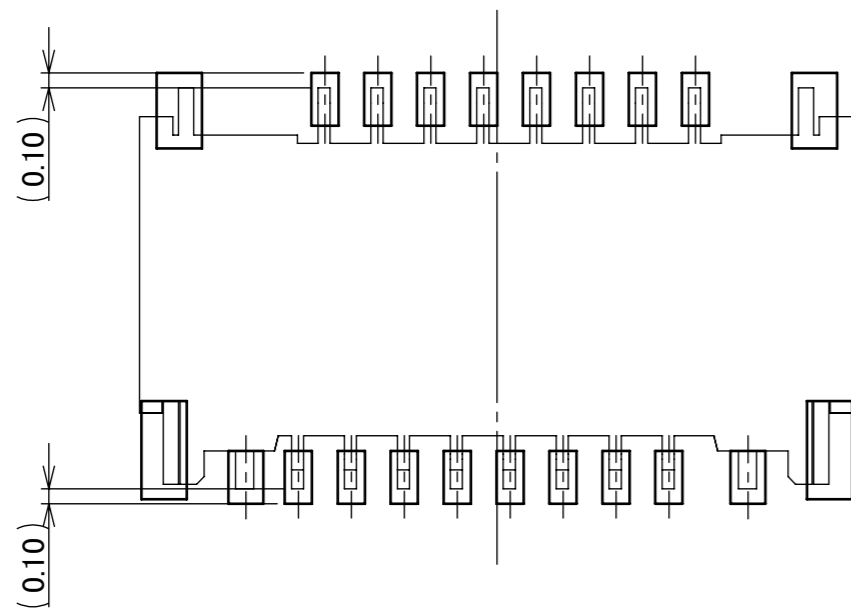
NOTES
2. PLEASE DO NOT CONNECT THESE TWO SOLDER PADS TO THE ELECTRICAL CIRCUIT. (SIGNAL OR GROUND)



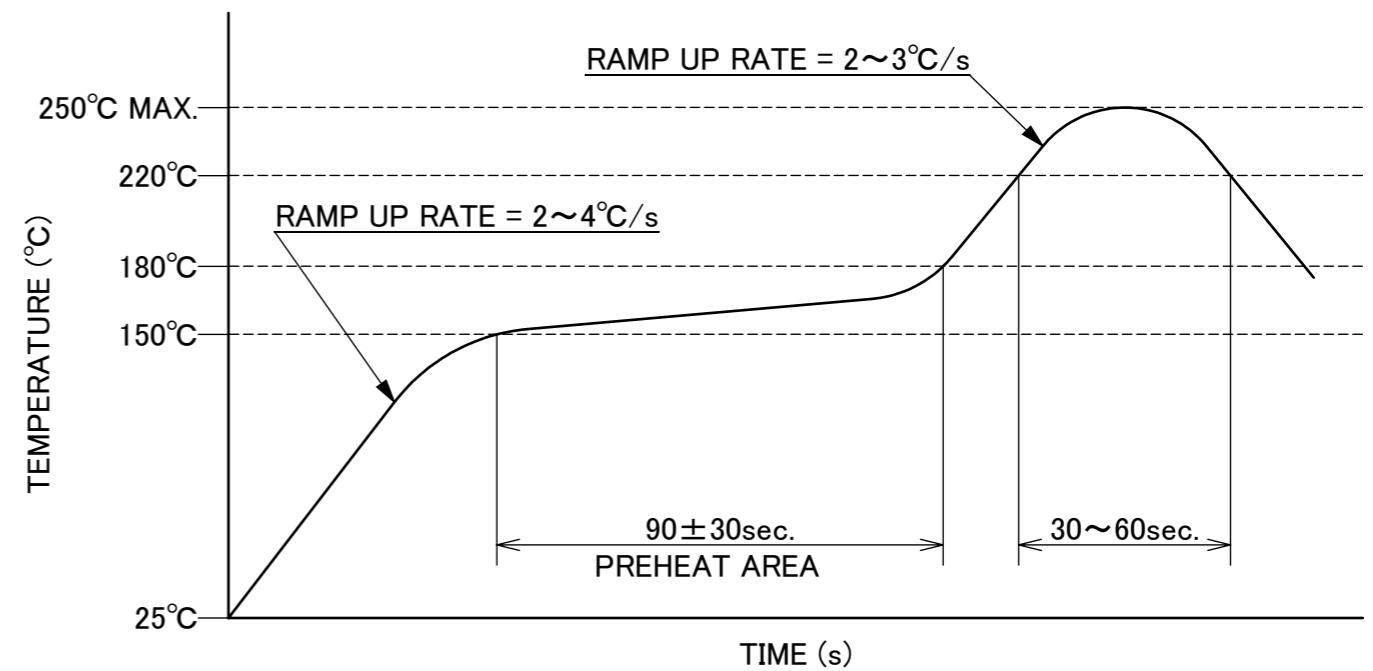
RECOMMENDED FPC LAYOUT

ODD NUMBER POSITION

ANGLE	±2°	6 OVER 30 MAX.	±0.3	PROJECTION	SERIES No.	CUSTOMER COPY
	6 MAX.	±0.2	30 OVER 120 MAX.	±0.5	R6	
GENERAL TOLERANCE.				TITLE	SCALE	I-PEX
DWG.	DATE			MINIFLEX® 175-ST	20:1	
CHK.	DATE				UNIT	
APP.	DATE			DWG. No.	mm	
					SIZE	SHEET 5/7 REV. 5
				20622	A3	



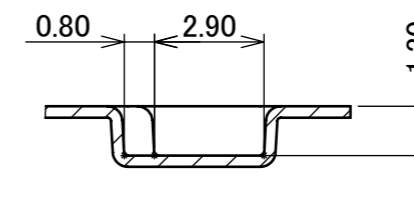
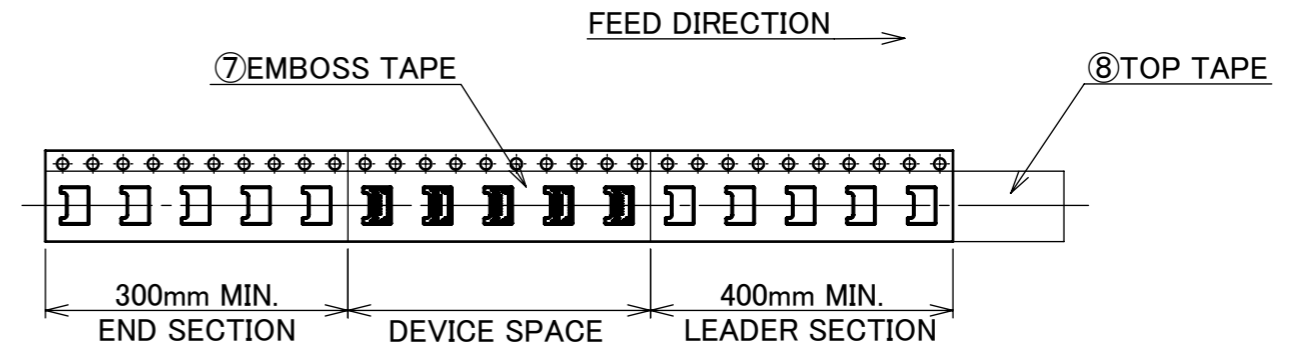
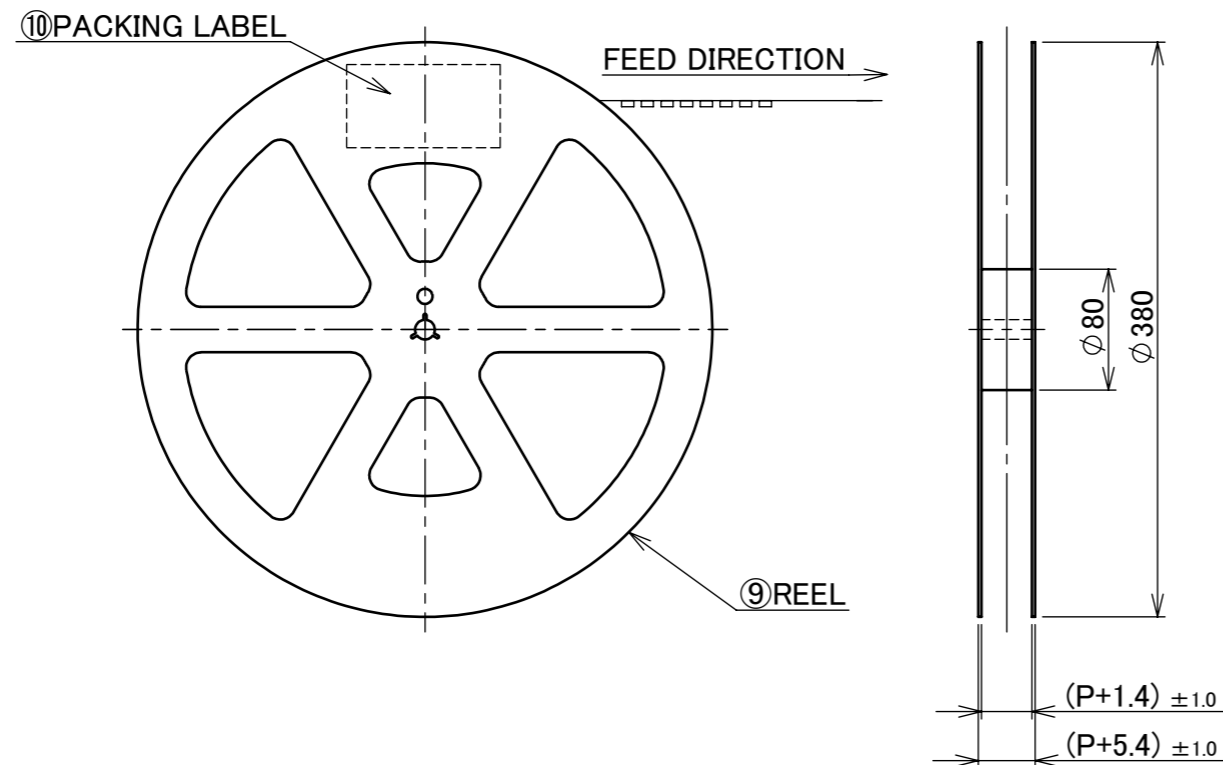
CONNECTOR ON RECOMMENDED FOOTPRINT PATTERN



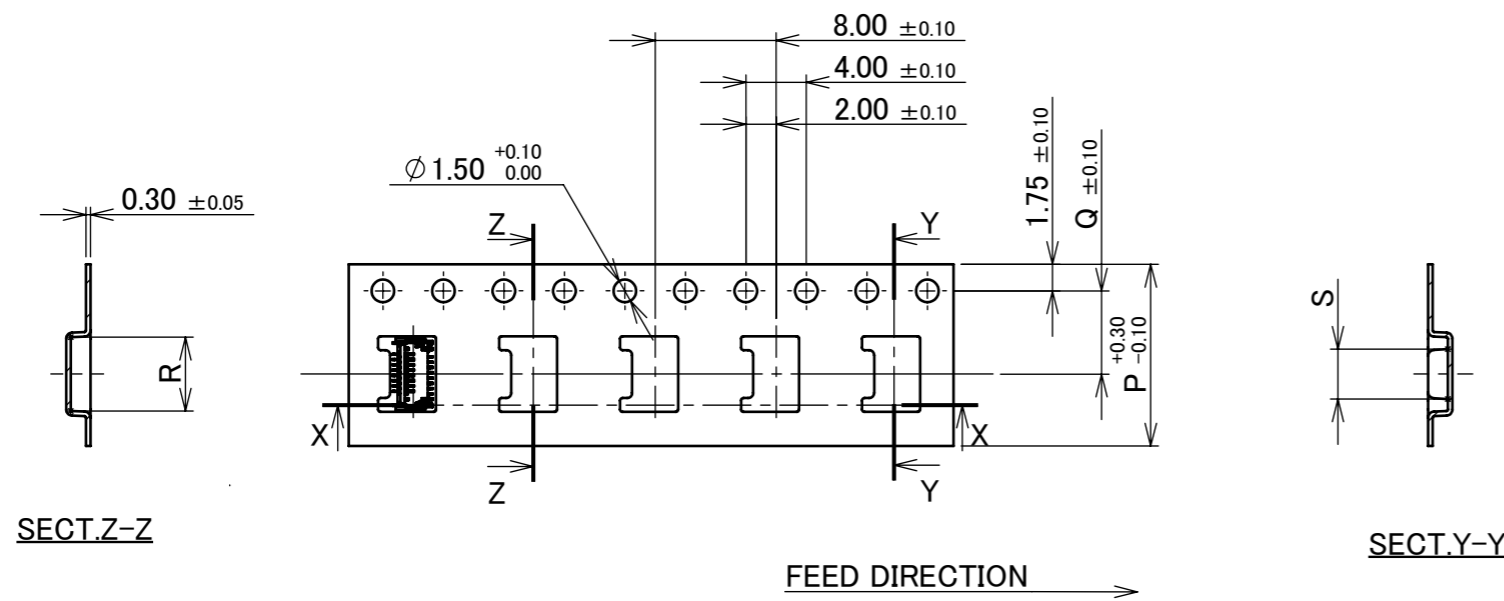
REFLOW TEMPERATURE PROFILE
SENJU METAL INDUSTRY CO., LTD. : M705-SHF(Sn96.5 Ag3.0 Cu0.5)

ANGLE	±2°	6 OVER 30 MAX.	±0.3	PROJECTION 	SERIES No. R6	CUSTOMER COPY	
6 MAX.	±0.2	30 OVER 120 MAX.	±0.5				
GENERAL TOLERANCE.				TITLE	SCALE 20:1 UNIT mm SIZE A3	 SHEET 6/7 REV. 5	
DWG.	DATE			MINIFLEX® 175-ST			
CHK.	DATE						
APP.	DATE			DWG. No. 20622			

PART NO.	P	Q	R	S	QTY. PER EMOSS REEL (PIECES / REEL)	QTY. PER PACKING CARTON (REELS / CARTON)
20622-016E-0#	12.00	5.50	4.870	3.300	7000 / REEL	8 / CARTON = 56000
20622-019E-0#			5.395	3.825		



DETAIL AA
(S=5/1)



NOTES.

- TAPING SPECIFICATION FOLLOWS JIS C 0806 (IEC 60286-3).
- MAKE EMPTY SECTION OF LEADER AND END ON EACH END OF THE TAPE.
- TOP TAPE SHALL NOT STICK OUT FROM EMOSS TAPE.
- TOP TAPE SHALL NOT COVER FEED HOLE.

NO.	DISCRIPTION	MATERIAL	FINISH , REMARKS
10	PACKING LABEL	-	-
9	REEL	PS	BLACK
8	TOP TAPE	PET t=0.062 TRANSPARENCY	ANTI-STATIC TYPE
7	EMBOSS TAPE	PS t=0.3 TRANSPARENCY	ANTI-STATIC TYPE

ANGLE	±2°	6 OVER 30 MAX.	±0.3	PROJECTION	SERIES No.	CUSTOMER COPY
6 MAX.	±0.2	30 OVER 120 MAX.	±0.5		R6	
GENERAL TOLERANCE.				TITLE	SCALE	I-PEX
DWG.	DATE			MINIFLEX® 175-ST	UNIT	
CHK.	DATE				mm	
APP.	DATE			DWG. No.	SIZE	
				20622	A3	SHEET 7/7 REV. 5