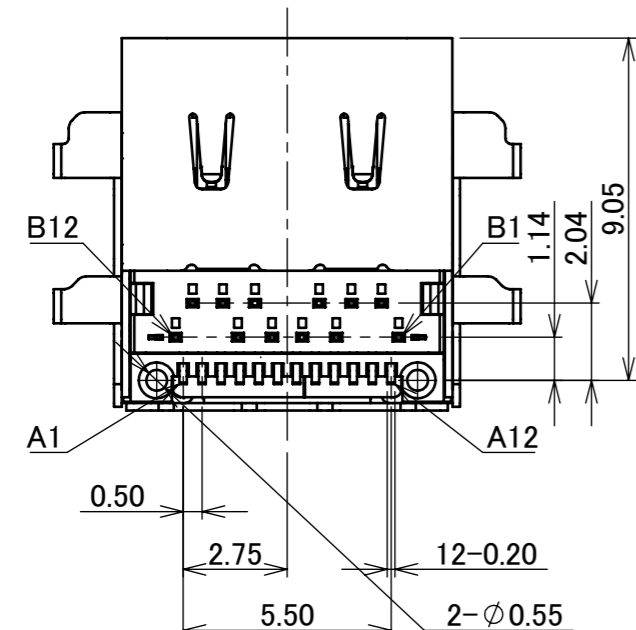
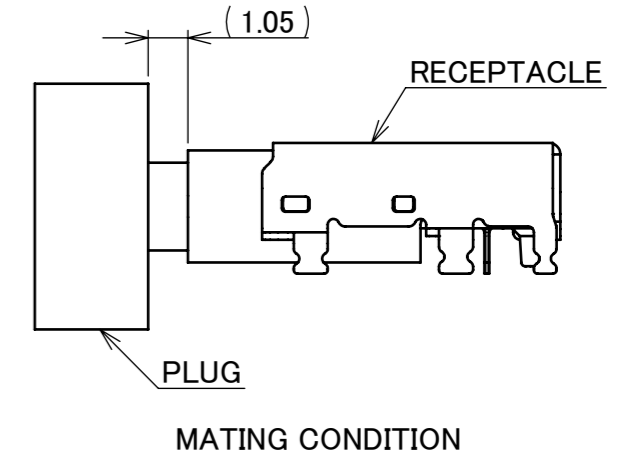
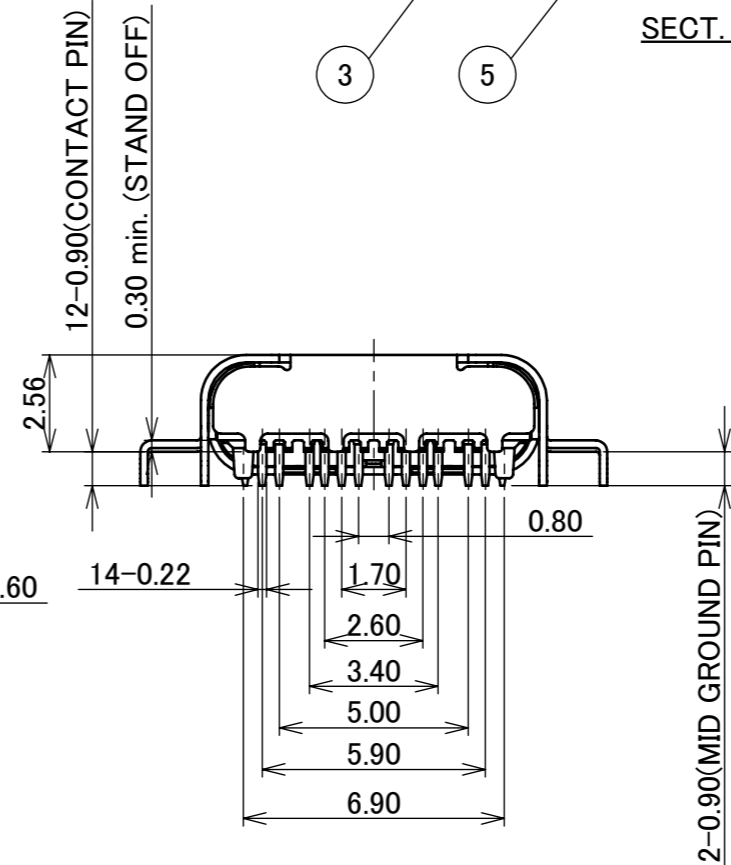
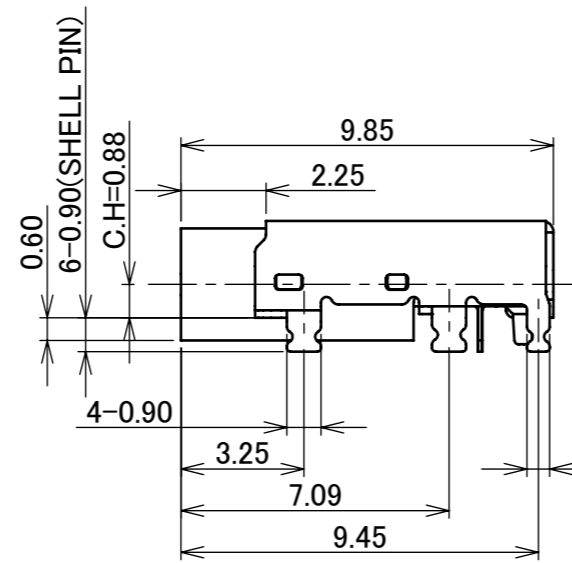
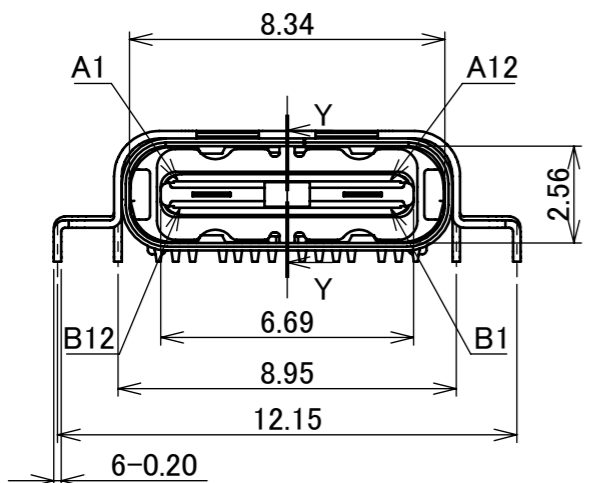
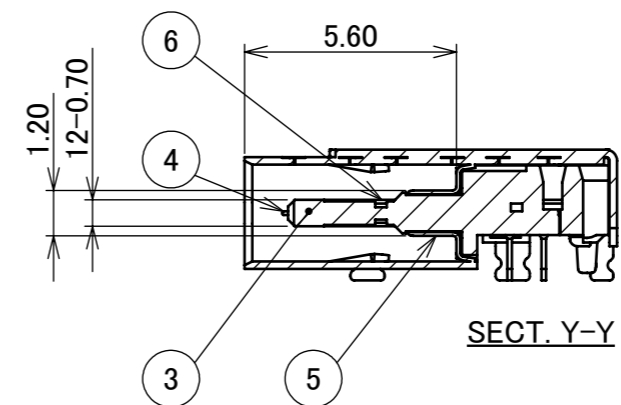
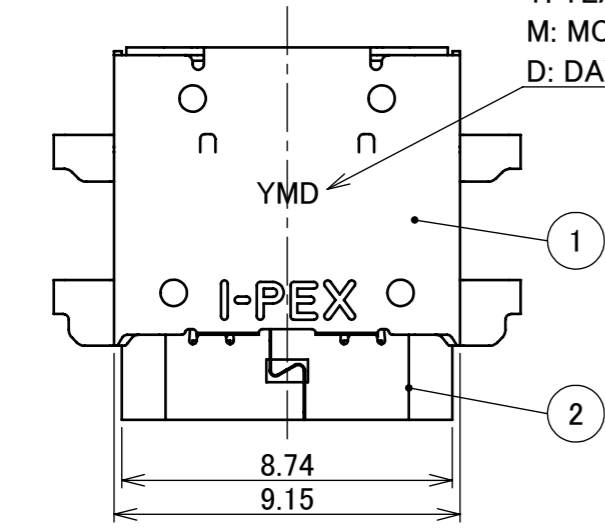
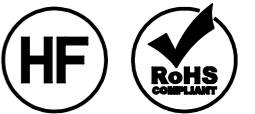


PART NO.
30114-024E-01

YMD
Y: YEAR
M: MONTH
D: DAY



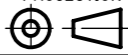
NO.	DESCRIPTION	MATERIAL	FINISH, REMARKS
6	CONTACT	COPPER ALLOY	CONTACT AREA Au 0.75 μm MIN. SOLDER AREA Sn 1.50~4.00 μm OVER Ni 2.00~4.00 μm
5	MATE GROUND	STAINLESS STEEL	Ni 1.27 μm MIN
4	MID GROUND	STAINLESS STEEL	Ni 1.27 μm MIN
3	HOUSING	LCP	BLACK, UL94 V-0
2	INNER SHELL	STAINLESS STEEL	Ni 1.50 μm MIN
1	OUTSIDE SHELL	STAINLESS STEEL	SOLDER AREA Sn 1.27 μm MIN. OVER Ni 1.50 μm MIN.

PIN ASSIGNMENT (Front)

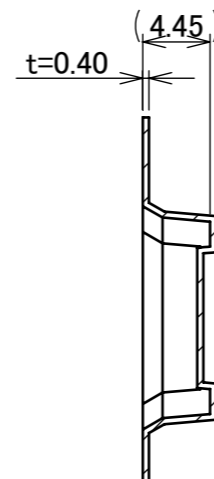
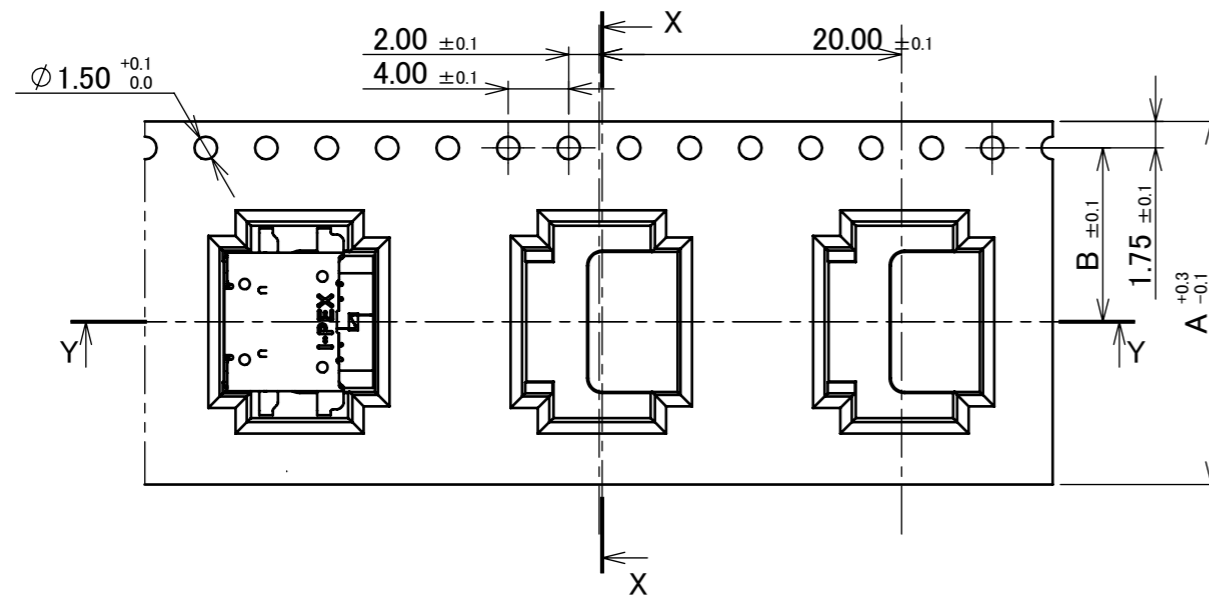
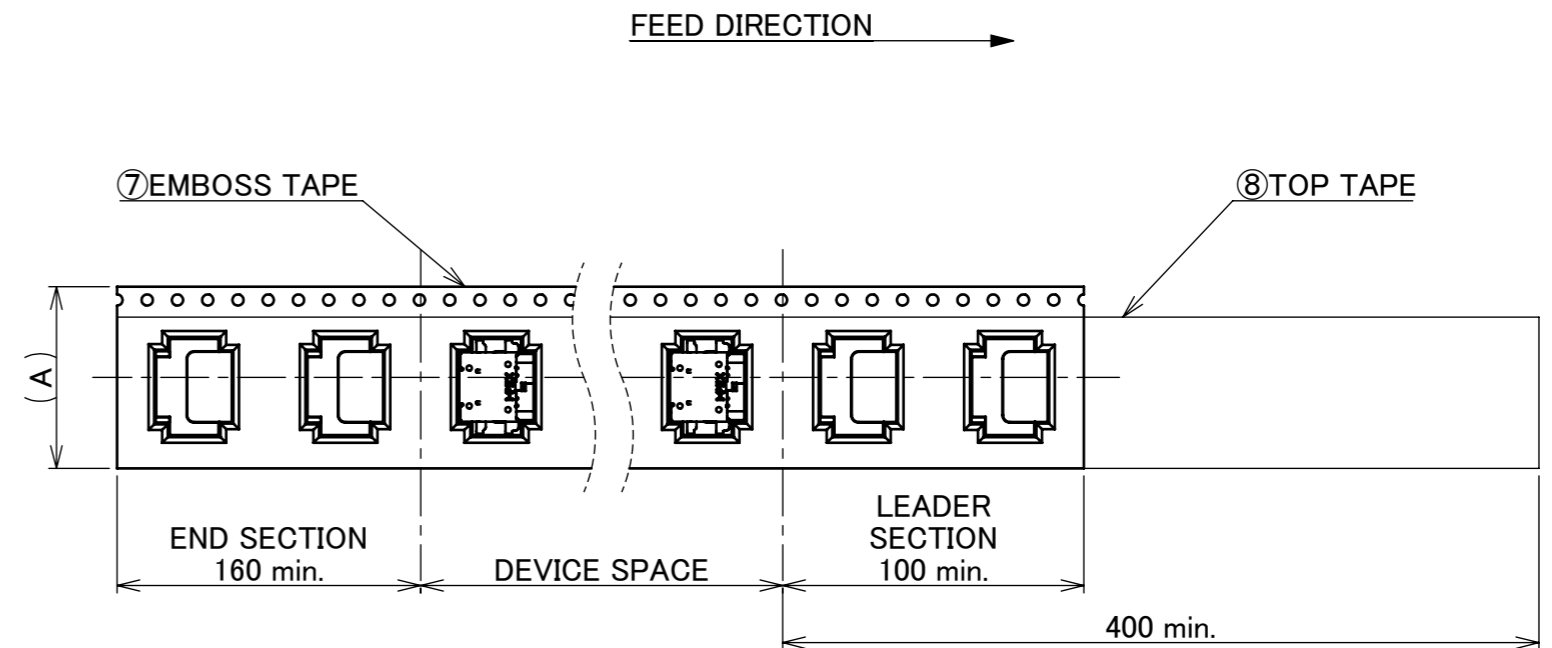
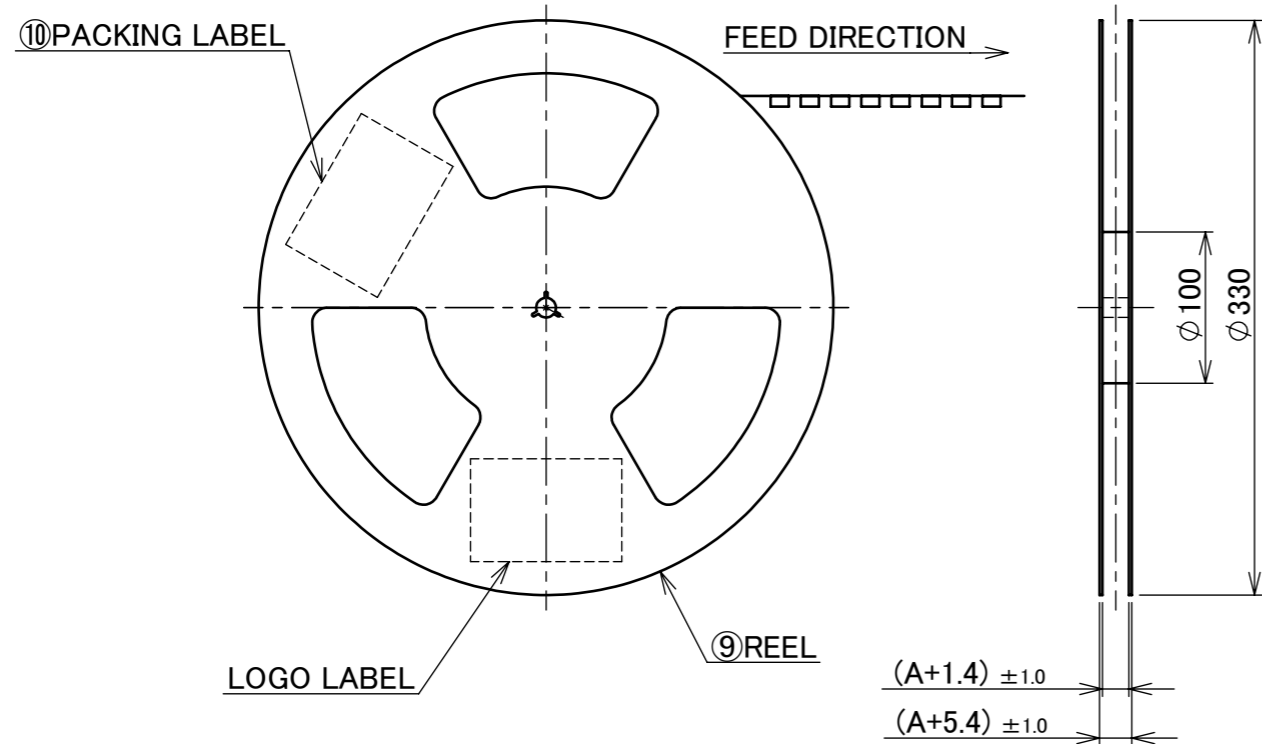
A1	A2	A3	A4	A5	A6	A7	A8	A9	A10	A11	A12
GND	TX1+	TX1-	V _{BUS}	CC1	D+	D-	SBU1	V _{BUS}	RX2-	RX2+	GND
GND	RX1+	RX1-	V _{BUS}	SBU2	D-	D+	CC2	V _{BUS}	TX2-	TX2+	GND
B12	B11	B10	B9	B8	B7	B6	B5	B4	B3	B2	B1

				ANGLE	±2°	6 OVER 30 MAX.	±0.3	PROJECTION ⊕	SERIES No. R0	CUSTOMER COPY			
					6 MAX.	±0.2	30 OVER 120 MAX.				±0.5		
				GENERAL TOLERANCE.				TITLE IX-UC2002 RECEPTACLE MID MOUNT TYPE	SCALE 5:1	UNIT mm	I-PEX		
1	Z181532	S.S	2018/12/28	TAK	DWG.	R.Hoshino	DATE					2018/08/24	
0	Z181093	R.H	2018/08/24		CHK.	S.Suzuki	DATE	2018/08/24					
REV.	ECN	BY	DATE	APP.	APP.	T.Hirakawa	DATE	2018/09/04	DWG. No.	30114	SIZE A3		
REVISION RECORD										SHEET	1/4	REV.	1

ITEMS	SPECIFICATION
RATING VOLTAGE	20V MAX.
RATING AMPERAGE (FOR VBUS PIN)	5A AC/DC
OPERATING TEMPERATURE	233~353K(-40°C~80°C)
CONTACT RESISTANCE	INITIAL : 40mohm MAX. / AFTER TEST : 50mohm MAX.
INSULATION RESISTANCE	100Mohm MIN.
DIELECTRIC WITHSTANDING VOLTAGE	AC100V 1min
DURABILITY	10,000 CYCLES
MATING FORCE (INITIAL / AFTER TEST)	20N MAX. 5N MIN.
UNMATING FORCE (INITIAL / AFTER TEST)	20N MAX. 8N MIN. / 20N MAX. 6N MIN.
COPLANARITY	0.10 MAX.
PRODUCT SPECIFICATION	PRS-2507
TEST REPORT	TR-18060
PACKING STANDARD	PST-18106

ANGLE	±2°	6 OVER 30 MAX.	±0.3	PROJECTION 	SERIES No. R0	CUSTOMER COPY
6 MAX.	±0.2	30 OVER 120 MAX.	±0.5			
GENERAL TOLERANCE.				TITLE IX-UC2002 RECEPTACLE MID MOUNT TYPE	SCALE	UNIT mm
DWG.	DATE					
CHK.	DATE					
APP.	DATE					
				DWG. No.	30114	SIZE A3
				SHEET 2/4		REV. 1

PART NO.	A	B	QTY. PER EMBOSS REEL (PIECES / REEL)	QTY. PER PACKING CARTON (REELS / CARTON)
30114-024E-01	24	11.5	800 / REEL	800 × 6 REELS / CARTON = 4,800



SECT. X-X
(S=2:1)



SECT. Y-Y
(S=2:1)

NOTES.

5. TAPING SPECIFICATION FOLLOWS JIS C 0806 (IEC 60286-3).
6. MAKE EMPTY SECTION OF LEADER AND END ON EACH END OF THE TAPE.
7. TOP TAPE SHALL NOT STICK OUT FROM EMBOSS TAPE.
8. TOP TAPE SHALL NOT COVER FEED HOLE.

NO.	DESCRIPTION	MATERIAL	FINISH, REMARKS
10	PACKING LABEL	-	-
9	REEL	PS	BLUE
8	TOP TAPE	PS TRANSPARENCY	-
7	EMBOSS TAPE	PS	-

ANGLE	±2°	6 OVER 30 MAX.	±0.3	PROJECTION ①	SERIES No. R0	CUSTOMER COPY
	6 MAX.	±0.2	30 OVER 120 MAX.			
GENERAL TOLERANCE.				TITLE IX-UC2002 RECEPTACLE MID MOUNT TYPE	SCALE 1:X	UNIT mm
DWG.	DATE		DWG. No. 30114			
CHK.	DATE					
APP.	DATE					
				SIZE A3	SHEET 4/4	REV. 1