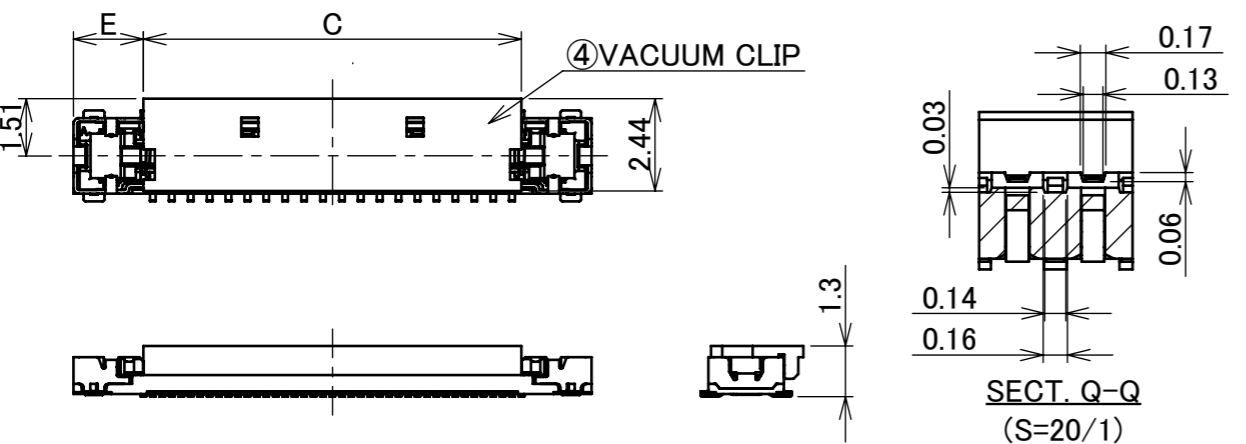
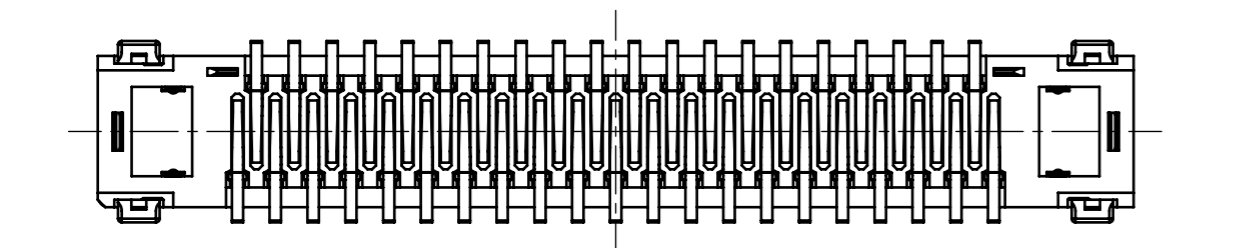
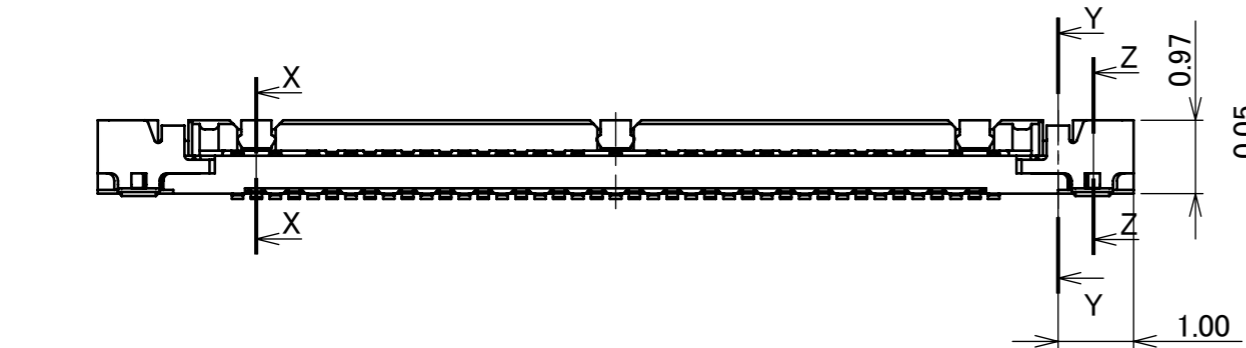
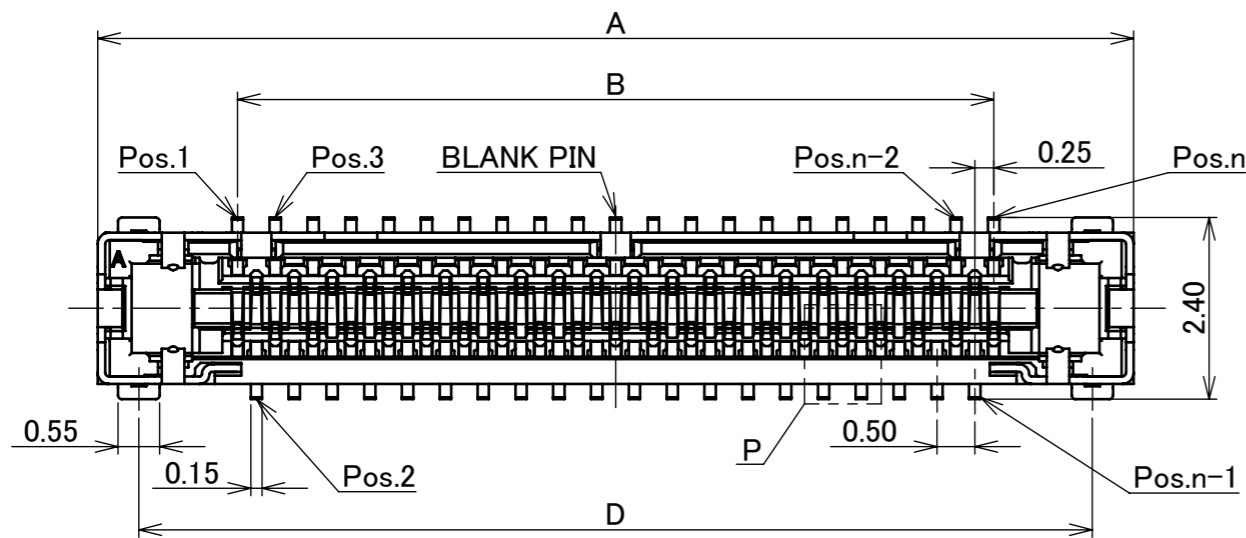


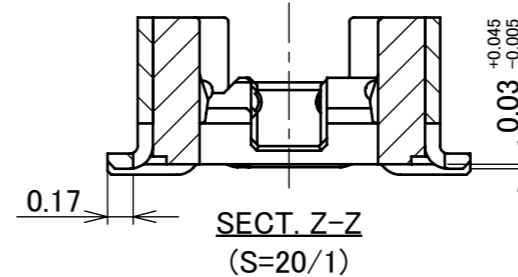
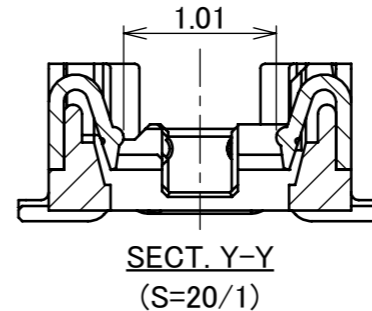
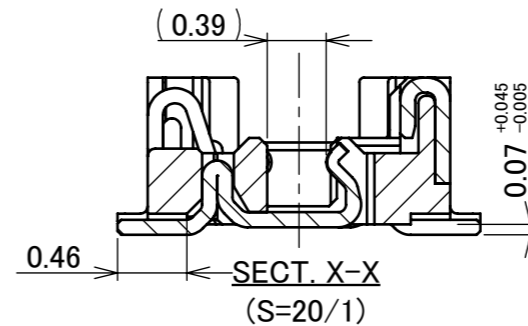
Recommended P/N 20533-0**E

PART NO.	Pos.	A	B	C	D	E
20533-030E-**-**	30	11.20	7.50	8.00	10.11	1.60
20533-034E-**-**	34	12.20	8.50	8.00	11.11	2.10
20533-040E-**-**	40	13.70	10.00	10.00	12.61	1.85
20533-050E-**-**	50	16.20	12.50	12.00	15.11	2.10

20533-0**E-**-**
SEE TABLE.1
Pos.



STATE OF VACUUM CLIP (S=5/1)



CONCAVE①
REFER TO THE TABLE.2

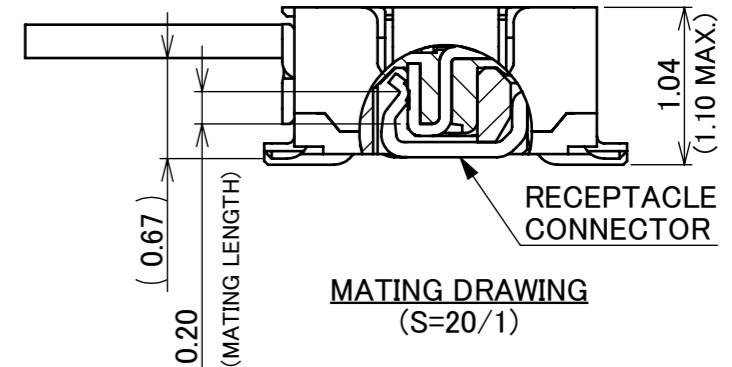
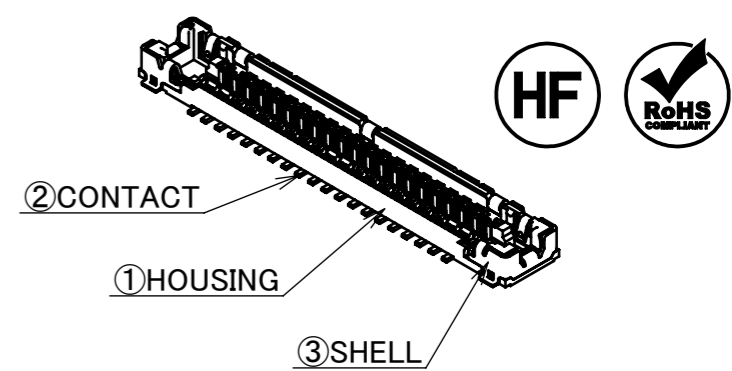
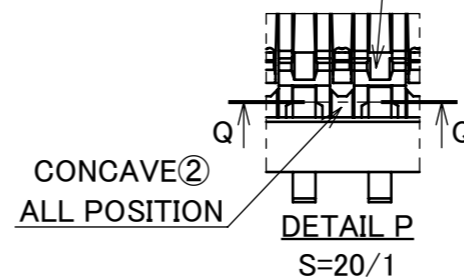


TABLE.2

POSITION OF CONCAVE①
30P : 2, 6, 8, 12, BLANK PIN, 19, 23, 25, 29 pos. (9 POSITIONS)
34P : 4, 8, 10, 14, BLANK PIN, 21, 25, 27, 31 pos. (9 POSITIONS)
40P : 6, 8, 12, 14, 18, 23, 25, 29, 33, 35 pos. (10 POSITIONS)
50P : 6, 8, 12, 14, 18, 22, BLANK PIN, 29, 33, 37, 39, 43, 45 pos. (13 POSITIONS)

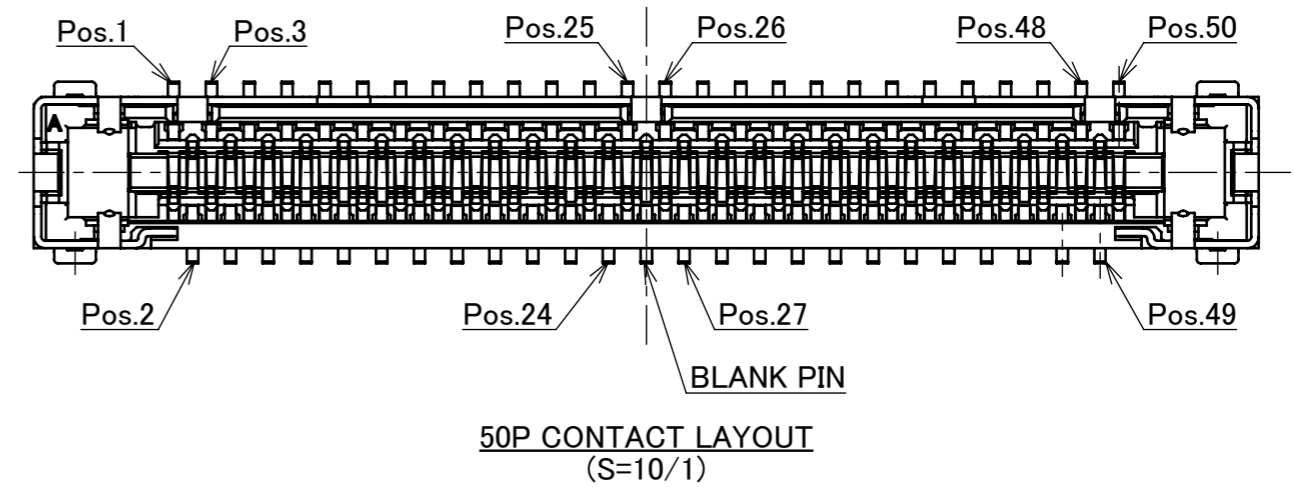
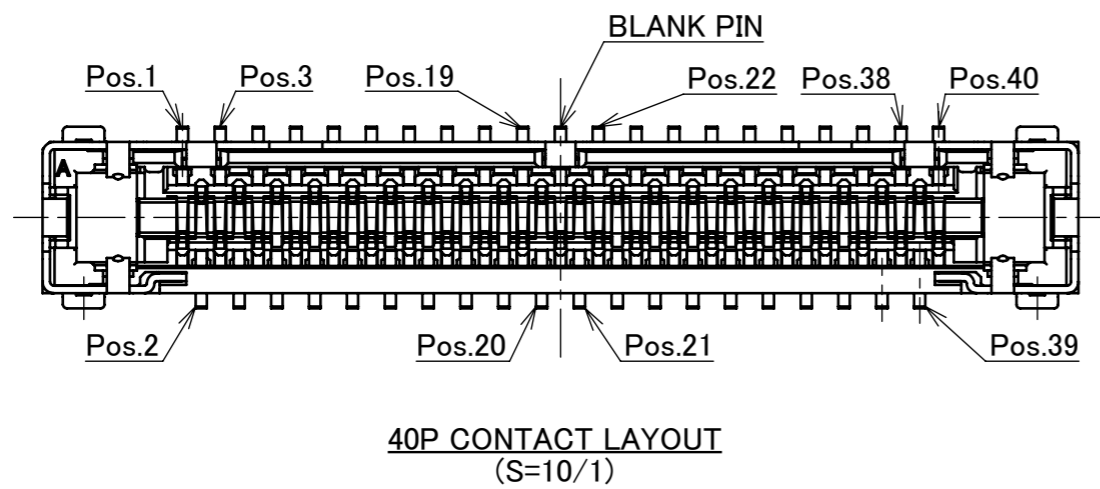
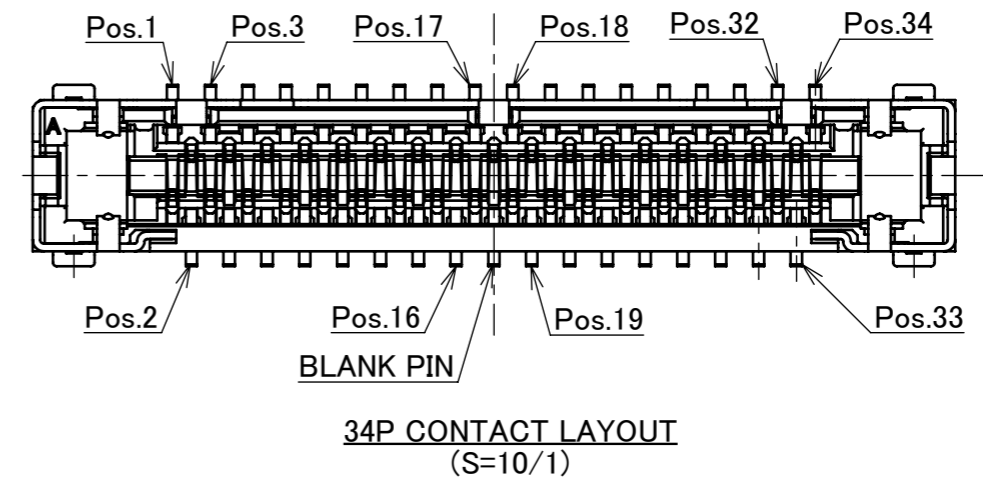
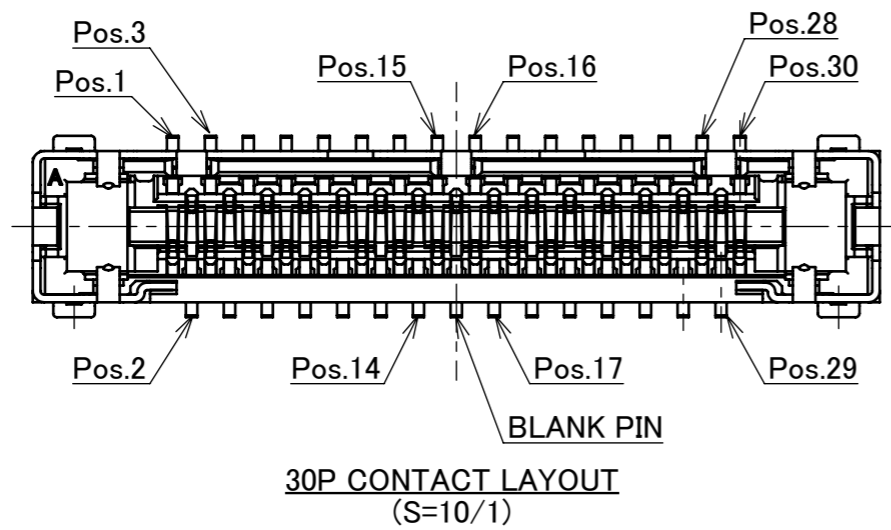
TABLE.1

PART NO.	CONTACT MATERIAL
20533-0**E	PHOSPHOR BRONZE
20533-0**E-01	CORSON ALLOY

NO.	DISCRIPTION	MATERIAL	FINISH , REMARKS
4	VACUUM CLIP	LCP	UL94V-0, BEIGE
3	SHELL	PHOSPHOR BRONZE	Au 0.02 μm MIN. OVER Ni 1.00 μm MIN.
2	COTANCT	SEE ABOVE TABLE.1	CONTACT AREA : Au 0.1 μm MIN. OVER Ni 1.00 μm MIN. SOLDERING AREA : Au 0.05 μm MIN. OVER Ni 1.00 μm MIN.
1	HOUSING	LCP	UL94-0, BLACK

REV.	ECN	BY	DATE	APP.	APP.	DATE	DWG. No.	20533	SIZE	A3	SHEET	1/7	REV.	13
13	Z190765	A.K	June/7/'19	H.I	ANGLE	±2°	6 OVER 30 MAX.	±0.3	PROJECTION SERIES No. R7 TITLE CABLIN®-UX II RECEPTACLE ASSEMBLY SCALE 10:1 UNIT mm I-PEX	CUSTOMER COPY	REVISION RECORD	E.Kawabe	2010/07/12	DWG. No.
12	Z190729	A.K	May/31/'19	Y.S	6 MAX.	±0.2	30 OVER 120 MAX.	±0.5						
11	Z180877	A.K	Sept./24/'18	H.I	GENERAL TOLERANCE.									
10	Z170849	R.H	Aug./21/'17	M.T	DWG.	M.Takemoto	DATE	2010/07/08						
9	Z161437	R.H	Nov./15/'16	Tom	CHK.	-	DATE							
8	Z160797	R.H	July/28/'16	K.N	APP.	-	DATE							

PART No.	Pos
20533-030E-**-**	30
20533-034E-**-**	34
20533-040E-**-**	40
20533-050E-**-**	50

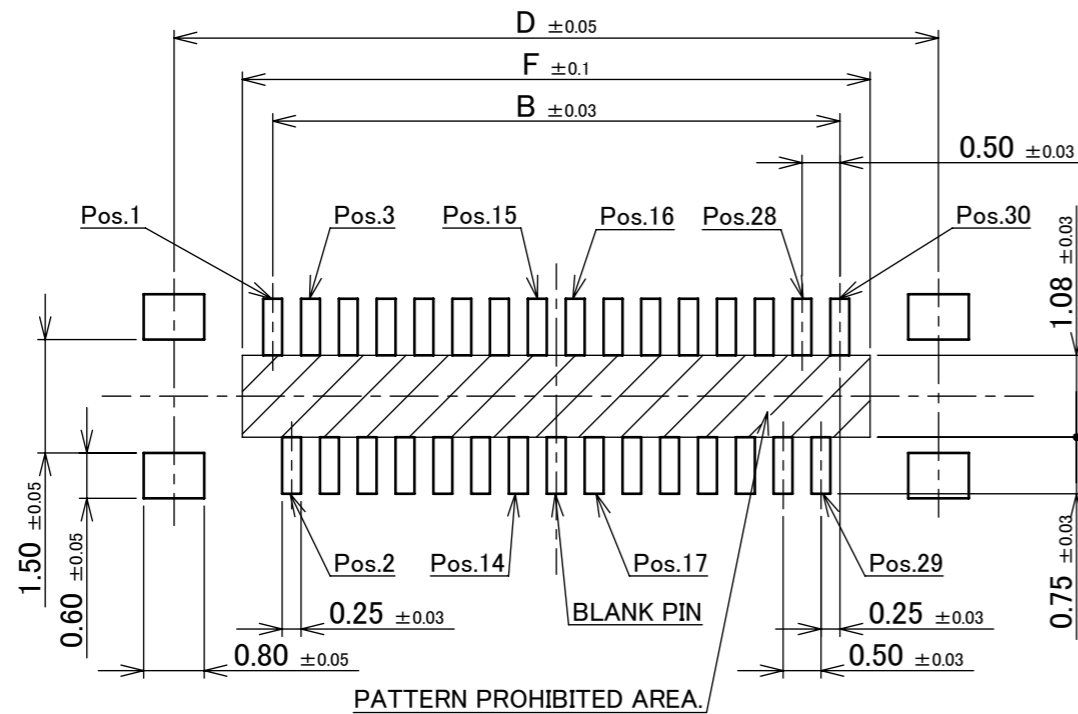


ANGLE	$\pm 2^\circ$	6 OVER 30 MAX.	± 0.3	PROJECTION 	SERIES No. R7	CUSTOMER COPY
6 MAX.	± 0.2	30 OVER 120 MAX.	± 0.5			
GENERAL TOLERANCE.				TITLE CABLIN [®] -UX II RECEPTACLE ASSEMBLY	DWG. No. 20533	SCALE
DWG.	DATE					10:1
CHK.	DATE					UNIT
APP.	DATE					mm
				SIZE	A3	SHEET 2/7 REV. 13

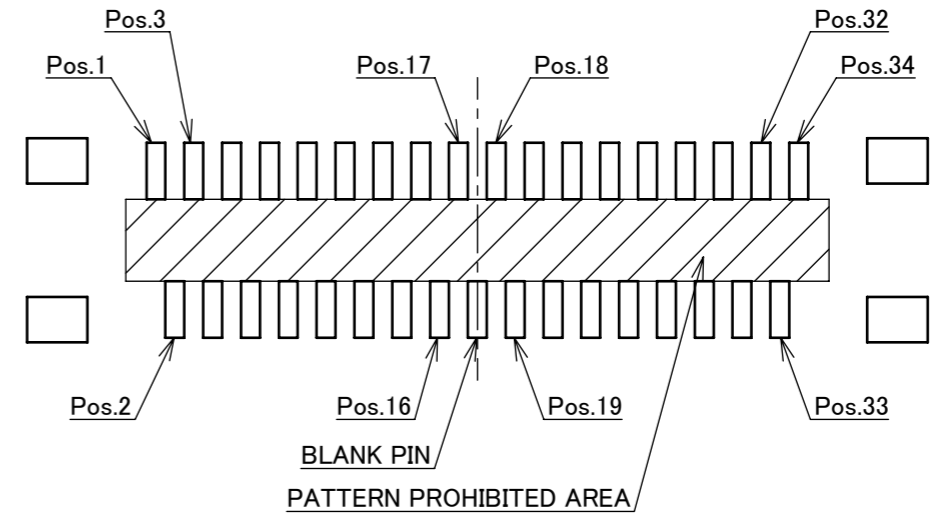
ITEMS	SPECIFICATION
APPLICABLE CABLE	MICRO COAX : AWG# 44 ,46 DISCRETE : AWG#39
RATING VOLTAGE	50V AC (PER CONTACT)
RATING AMPERAGE (FOR CONTACT)	CONTACT MATERIAL : PHOSPHOR BRONZE (PLUG : 20531-0**T-02 ,RECEPTACLE : 20533-0**E) 0.50A AC/DC [AWG#39] (PER CONTACT / UP TO 6 CONTACTS) 0.15A AC/DC [AWG#44] 0.10A AC/DC [AWG#46] CONTACT MATERIAL : CORSON ALLOY (PLUG : 20531-0**T-12 ,RECEPTACLE : 20533-0**E-01) 0.50A AC/DC [AWG#39] (PER CONTACT / UP TO 8 CONTACTS) 0.19A AC/DC [AWG#44] 0.14A AC/DC [AWG#46]
OPERATING TEMPERATURE	233~358K(-40°C~+85°C)
OPERATING HUMIDITY	75% MAX.(NON-CONDENSING)
CONTACT RESISTANCE	INITIAL : 450mohm MAX.(AWG#39) 1080mohm MAX.(AWG#44) 1880mohm MAX.(AWG#46) AFTER TEST : \triangle 40mohm MAX.
GROUND SHELL RESISTANCE	INITIAL : 100mohm MAX. / AFTER TEST : \triangle 40mohm MAX.
INSULATION RESISTANCE	INITIAL : 100Mohm MIN. / AFTER TEST : 100Mohm MIN.
DIELECTRIC WITHSTANDING VOLTAGE	AC100V 1min
DURABILITY	20 CYCLES
MATING FORCE (INITIAL / AFTER TEST)	30P : 26.4N MAX. 34P : 27.6N MAX. 40P : 29.4N MAX. 50P : 32.4N MAX.
UNMATING FORCE (INITIAL / AFTER TEST)	30P : 1.5N MIN. 34P : 1.9N MIN. 40P : 2.5N MIN. 50P : 3.5N MIN.
CABLE RETENTION FORCE	30P : 15.0N MIN. 34P : 17.0N MIN. 40P : 20.0N MIN. 50P : 25.0N MIN.
COPLANARITY	0.10mm MAX.
PRODUCT SPECIFICATION	PRS-1555
TEST REPORT	TR-10051
INSTRUCTION MANUAL	HIM-10001
PACKING STANDARD	300-874
APPEARANCE CRITERIA No.	QLS-A***

ANGLE	$\pm 2^\circ$	6 OVER 30 MAX.	± 0.3	PROJECTION 	SERIES No. R7	CUSTOMER COPY
		6 MAX.	± 0.2			
GENERAL TOLERANCE.				TITLE CABLIN [®] -UX II RECEPTACLE ASSEMBLY	SCALE 5:1 UNIT mm SIZE A3	SHEET 3/7 REV. 13
DWG.	DATE					
CHK.	DATE					
APP.	DATE					
				DWG. No.	20533	

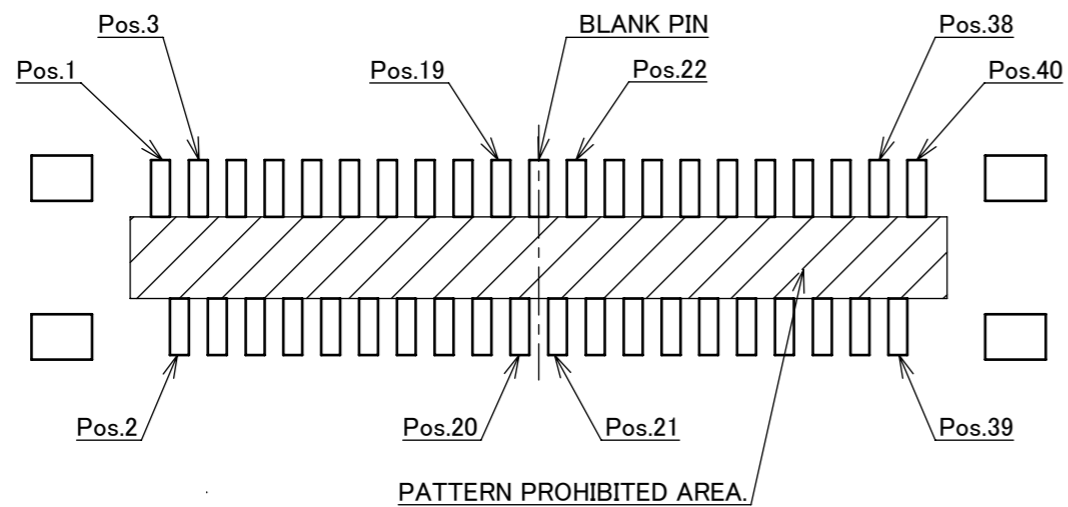
PART No.	Pos	B	D	F
20533-030E-**	30	7.50	10.11	8.30
20533-034E-**	34	8.50	11.11	9.30
20533-040E-**	40	10.00	12.61	10.80
20533-050E-**	50	12.50	15.11	13.30



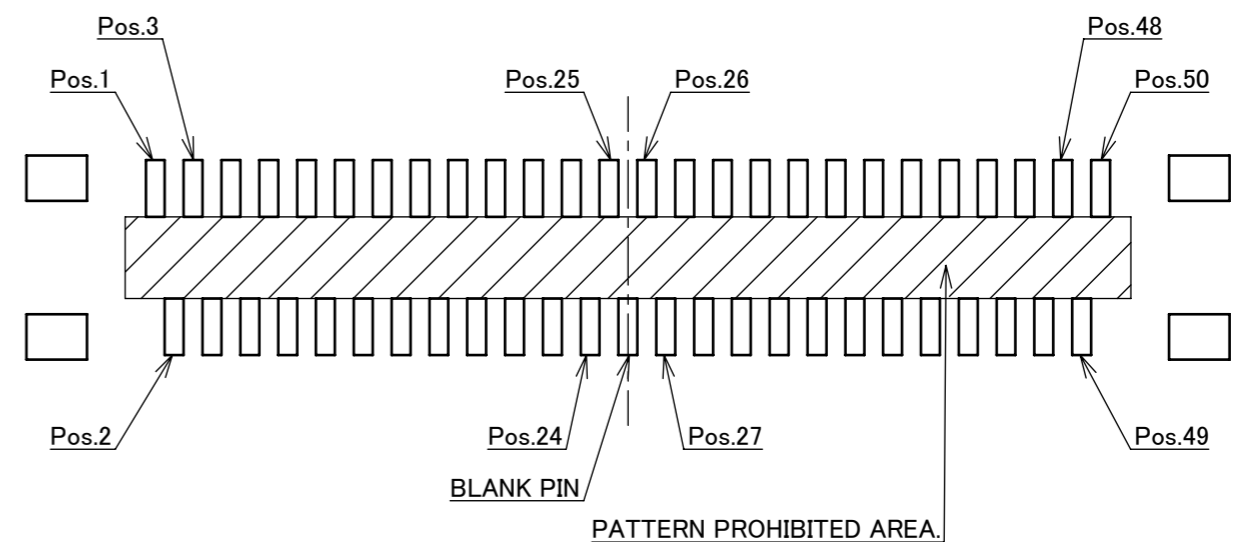
30P RECOMMENDED FOOTPRINT PATTERN LAYOUT



34P RECOMMENDED FOOTPRINT PATTERN LAYOUT



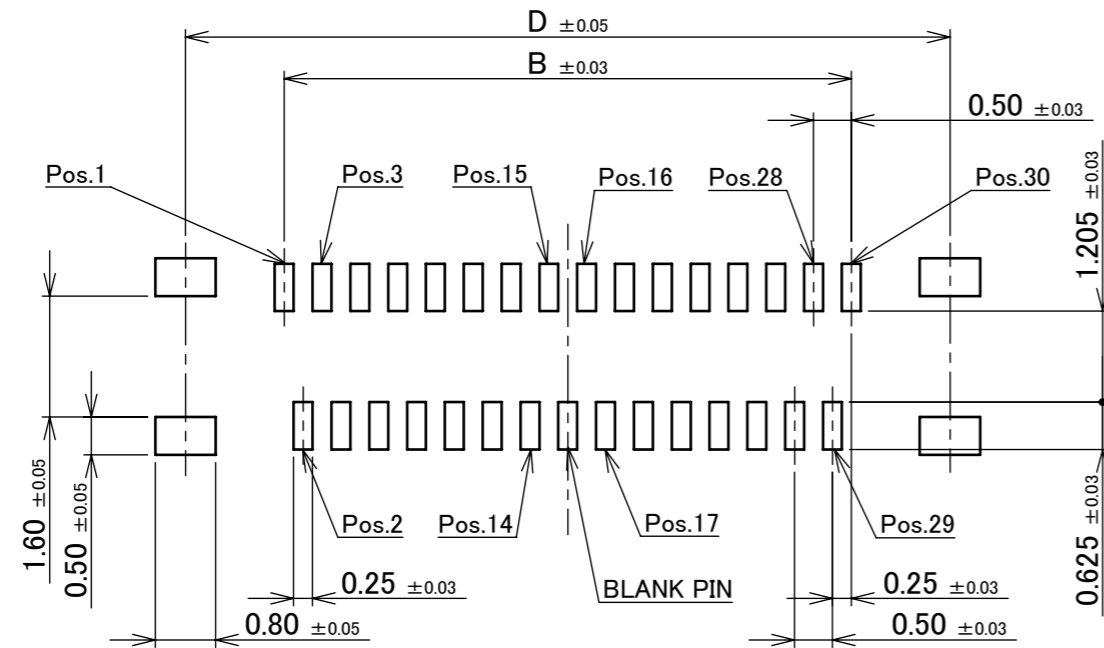
40P RECOMMENDED FOOTPRINT PATTERN LAYOUT



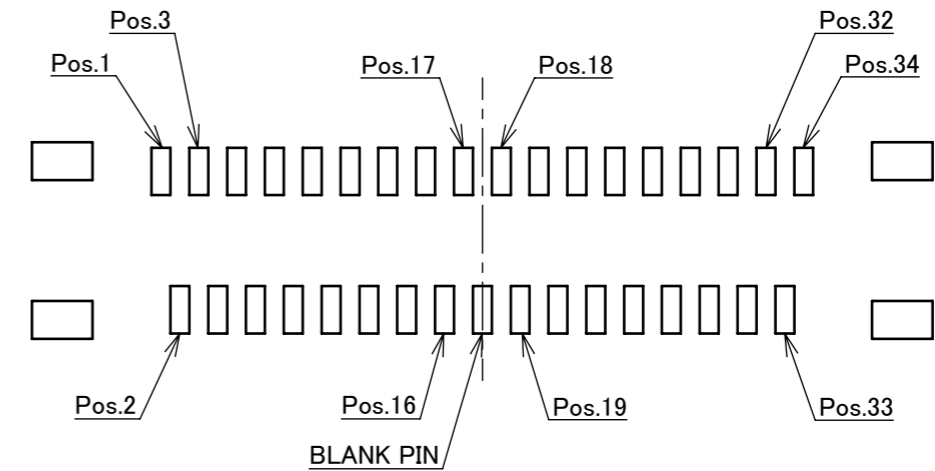
50P RECOMMENDED FOOTPRINT PATTERN LAYOUT

ANGLE	$\pm 2^\circ$	6 OVER 30 MAX.	± 0.3	PROJECTION	SERIES No.	CUSTOMER COPY
	6 MAX.	± 0.2	30 OVER 120 MAX.	± 0.5	R7	
GENERAL TOLERANCE.				TITLE	SCALE	I-PEX
DWG.	DATE			CABLIN [®] -UX II RECEPTACLE ASSEMBLY	10:1	
CHK.	DATE			DWG. No.	UNIT	
APP.	DATE			20533	mm	
				SIZE	A3	SHEET 4/7
						REV. 13

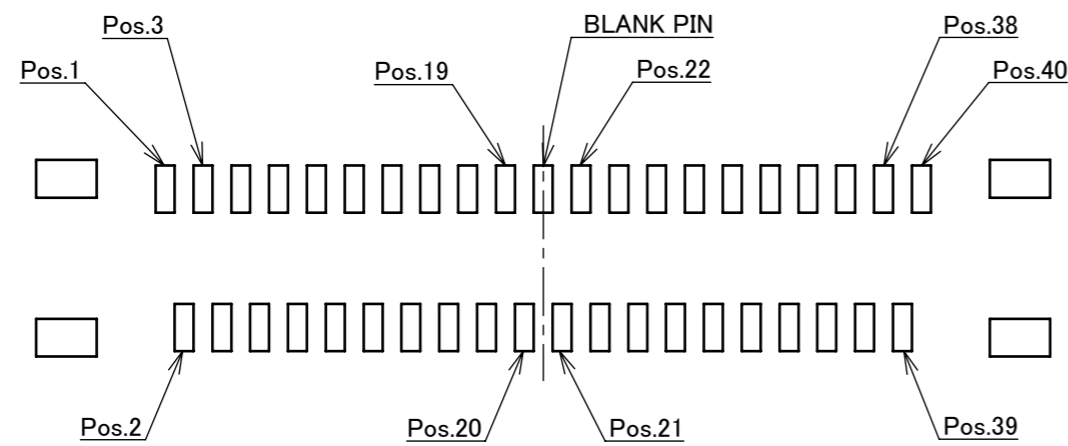
PART No.	Pos	B	D
20533-030E-**-**	30	7.50	10.11
20533-034E-**-**	34	8.50	11.11
20533-040E-**-**	40	12.61	
20533-050E-**-**	50	12.50	15.11



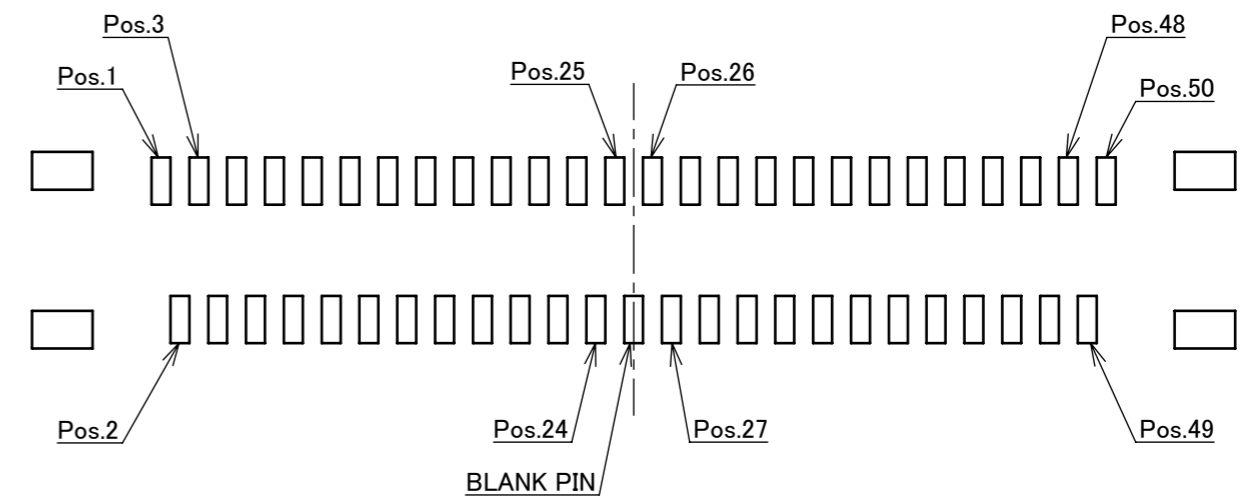
30P RECOMMENDED METAL MASK LAYOUT
METAL MASK THICKNESS : $t=0.12\text{mm}$



34P RECOMMENDED METAL MASK LAYOUT
METAL MASK THICKNESS : $t=0.12\text{mm}$

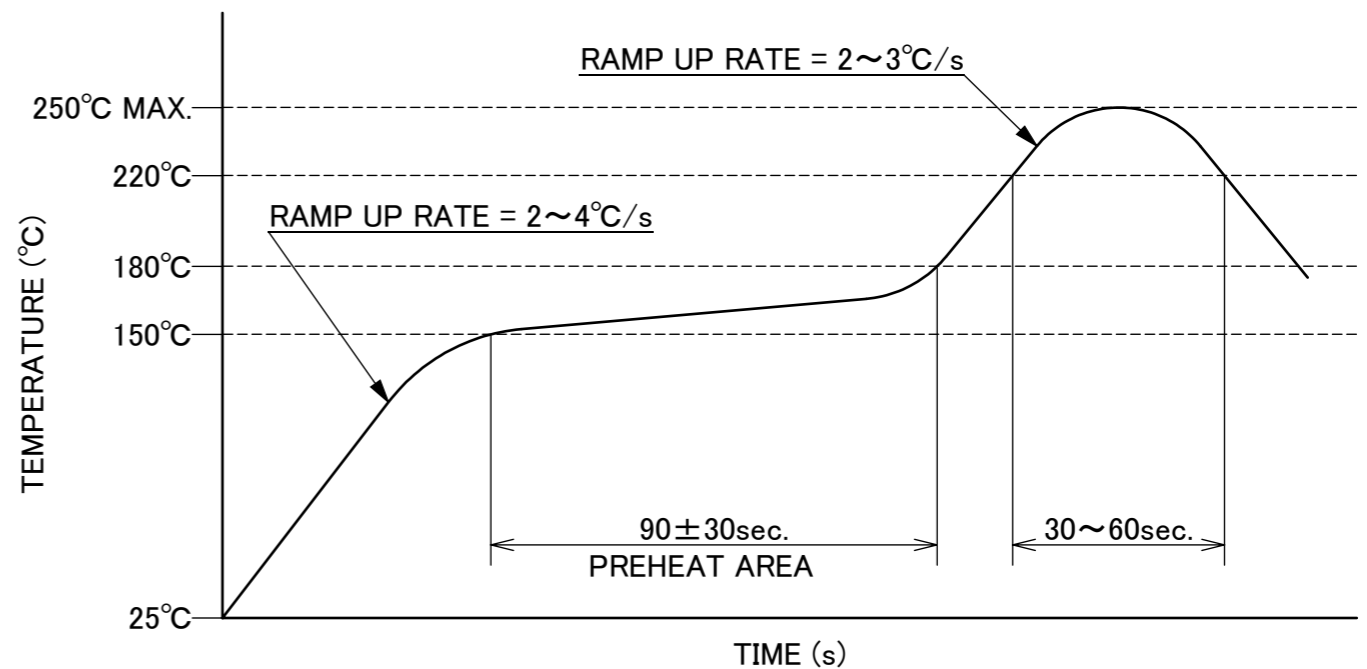
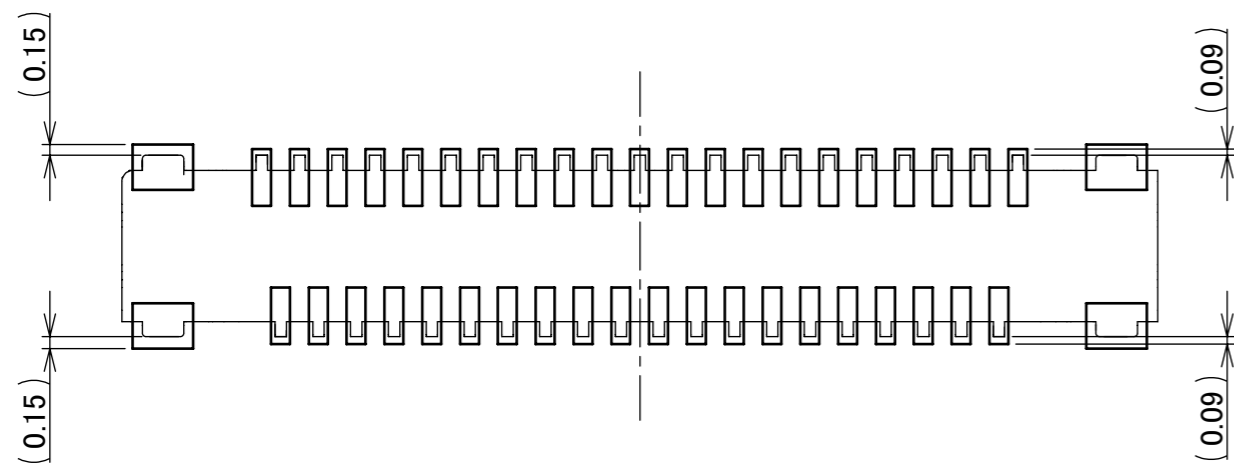


40P RECOMMENDED METAL MASK LAYOUT
METAL MASK THICKNESS : $t=0.12\text{mm}$



50P RECOMMENDED METAL MASK LAYOUT
METAL MASK THICKNESS : $t=0.12\text{mm}$

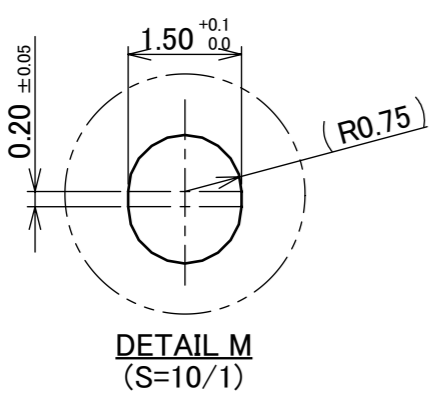
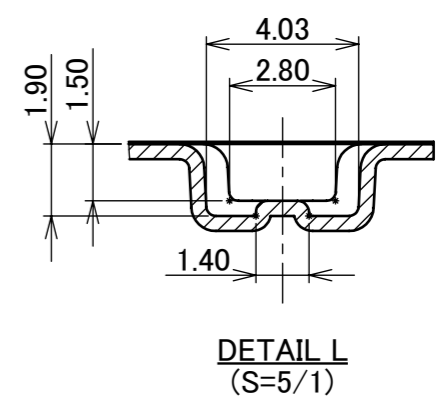
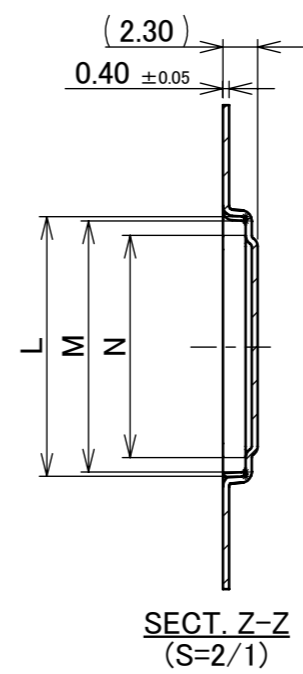
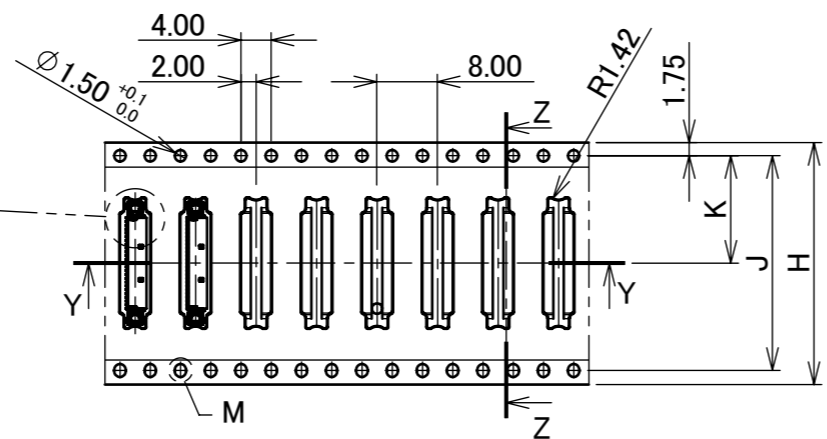
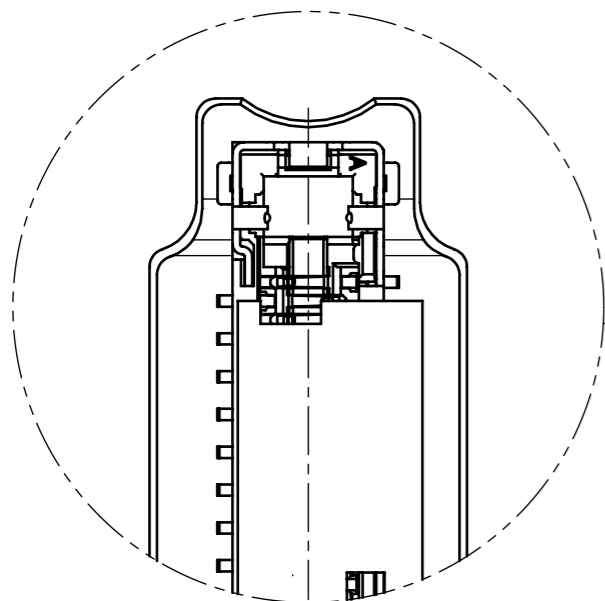
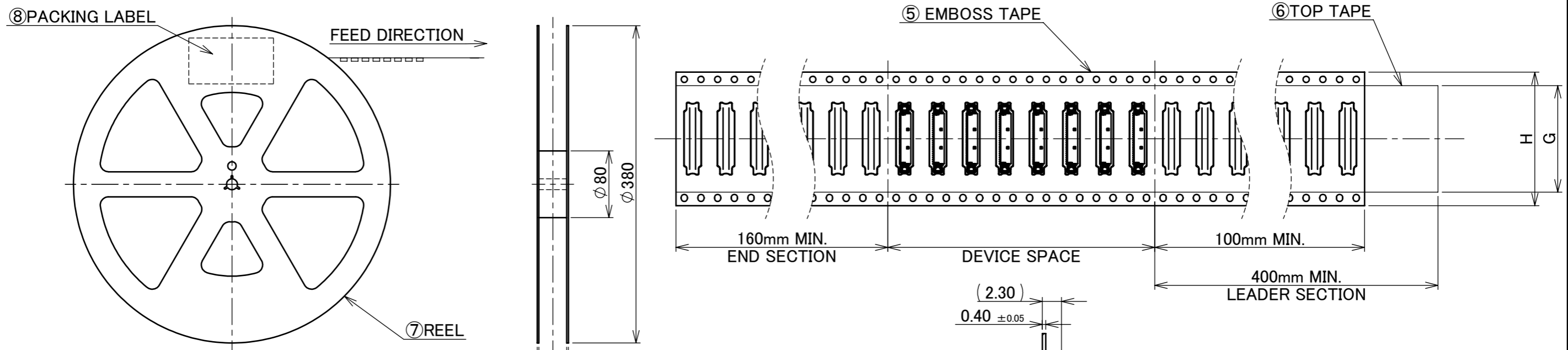
ANGLE	$\pm 2^\circ$	6 OVER 30 MAX.	± 0.3	PROJECTION 	SERIES No. R7	CUSTOMER COPY
6 MAX.	± 0.2	30 OVER 120 MAX.	± 0.5			
GENERAL TOLERANCE.				TITLE CABLIN [®] -UX II RECEPTACLE ASSEMBLY	SCALE 10:1	UNIT mm
DWG.	DATE					
CHK.	DATE					
APP.	DATE					
				DWG. No.	20533	SIZE A3
				SHEET 5/7		REV. 13



REFLOW TEMPERATURE PROFILE
 SENJU METAL INDUSTRY CO., LTD. : M705-SHF(Sn96.5 Ag3.0 Cu0.5)

ANGLE	±2°	6 OVER 30 MAX.	±0.3	PROJECTION 	SERIES No. R7	CUSTOMER COPY		
6 MAX.	±0.2	30 OVER 120 MAX.	±0.5					
GENERAL TOLERANCE.				TITLE CABLIN [®] -UX II RECEPTACLE ASSEMBLY	SCALE 5:1	UNIT mm		
DWG.	DATE							
CHK.	DATE							
APP.	DATE							
				DWG. No.	20533	SIZE A3	SHEET 6/7	REV. 13

PART No.	Pos.	G	H	J	K	L	M	N	QTY. PER EMBOSS REEL (PIECES / REEL)	QTY. PER PACKING CARTON (REELS / CARTON)
20533-030E-##	30	21.3	24.0	-	11.5	12.2	11.6	9.7	5000 / REEL	4 REELS / CARTON = 20000
20533-034E-##	34	21.3	24.0	-	11.5	13.2	12.6	10.7		
20533-040E-##	40	21.3	24.0	-	11.5	14.7	14.1	12.2		
20533-050E-##	50	25.5	32.0	28.4	14.2	17.2	16.6	14.7		



NOTES.

5. TAPING SPECIFICATION FOLLOWS JIS C 0806 (IEC 60286-3).

6. MAKE EMPTY SECTION OF LEADER AND END ON EACH END OF THE TAPE.

7. TOP TAPE SHALL NOT STICK OUT FROM EMBOSS TAPE.

8. TOP TAPE SHALL NOT COVER FEED HOLE.

NO.	DISCRIPTION	MATERIAL	FINISH , REMARKS
8	PACKING LABEL	-	-
7	REEL	PS	ANTI-STATIC TYPE BLACK
6	TOP TAPE	PET $t=0.062$ TRANSPARENCY	ANTI-STATIC TYPE
5	EMBOSS TAPE	PS $t=0.4$ TRANSPARENCY	ANTI-STATIC TYPE

ANGLE	$\pm 2^\circ$	6 OVER 30 MAX.	± 0.3	PROJECTION ①	SERIES No. R7	CUSTOMER COPY
6 MAX.	± 0.2	30 OVER 120 MAX.	± 0.5			
GENERAL TOLERANCE.				TITLE	SCALE	I-PEX
DWG.	DATE	CABLINE®-UX II RECEPTACLE ASSEMBLY		5:1		
CHK.	DATE			UNIT		
APP.	DATE			mm		
DWG. No.				SIZE	SHEET 7/7 REV. 13	
20533		A3				