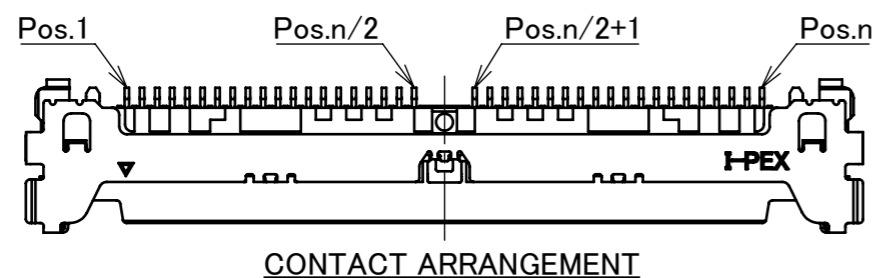
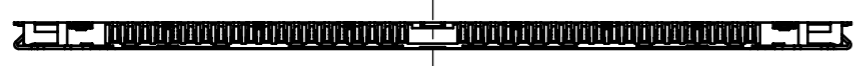
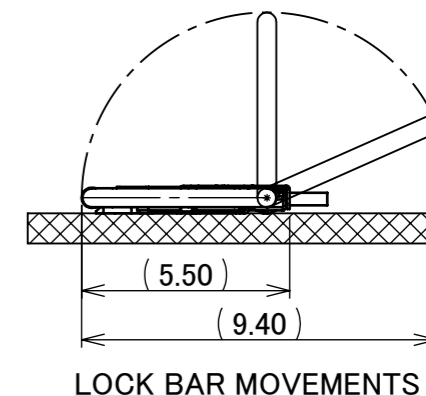
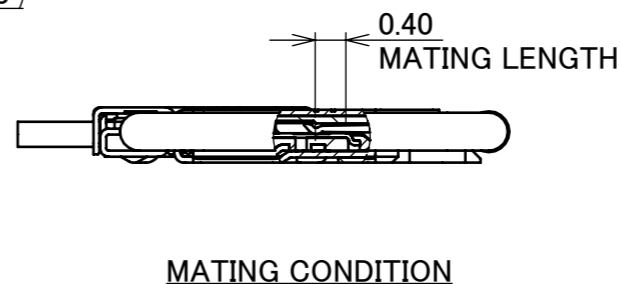
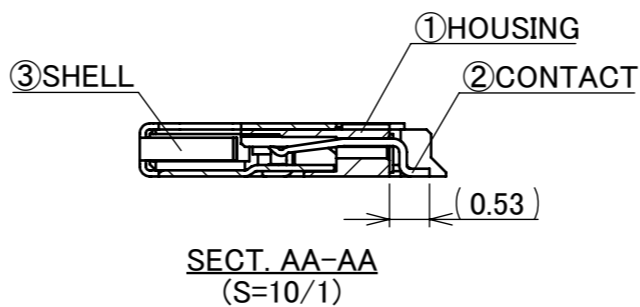
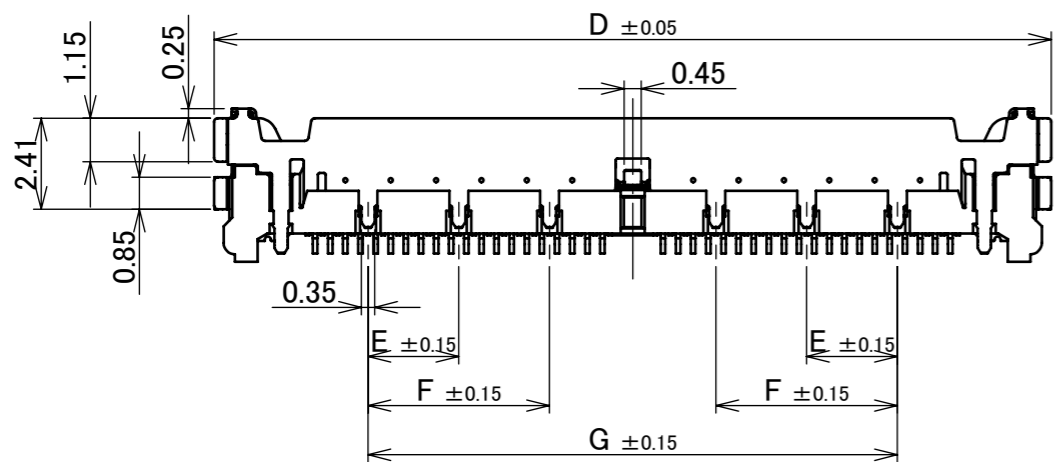
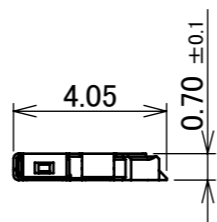
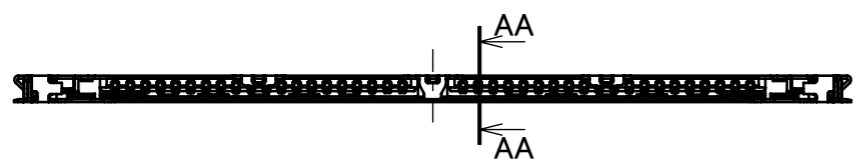
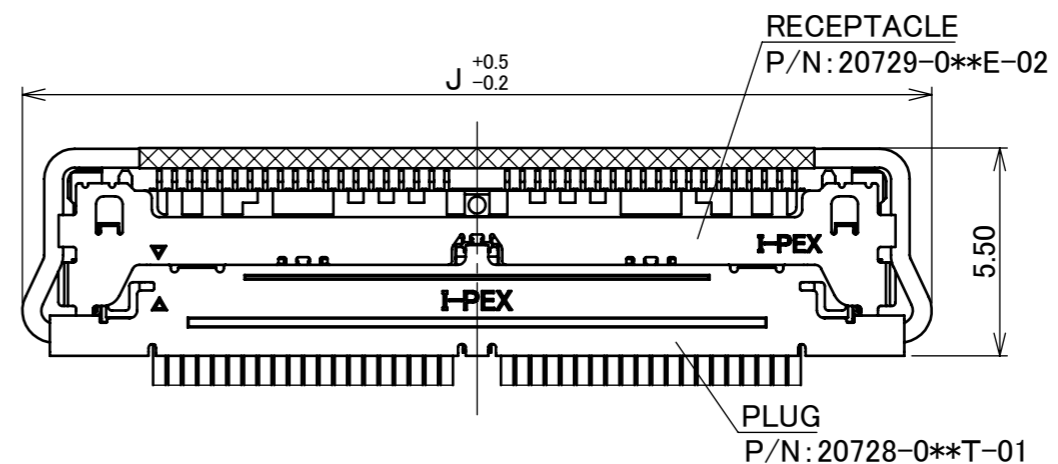
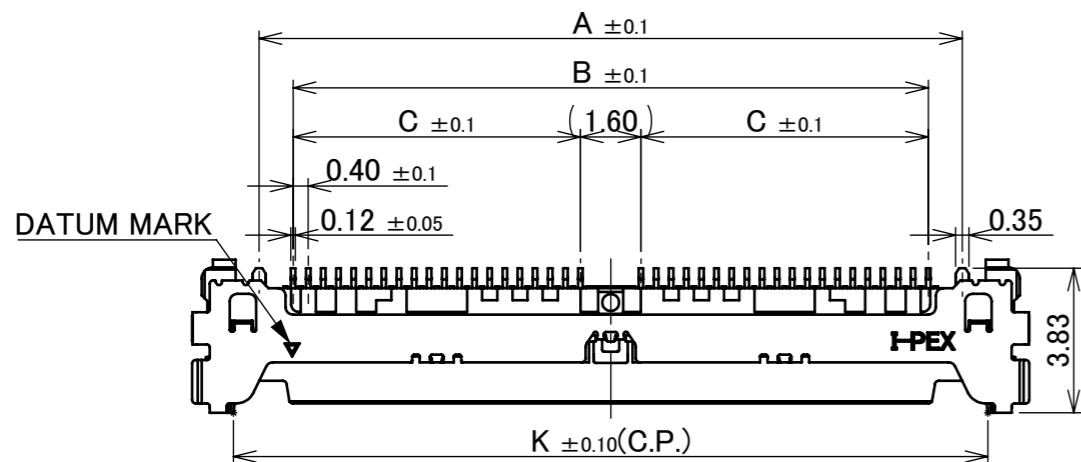
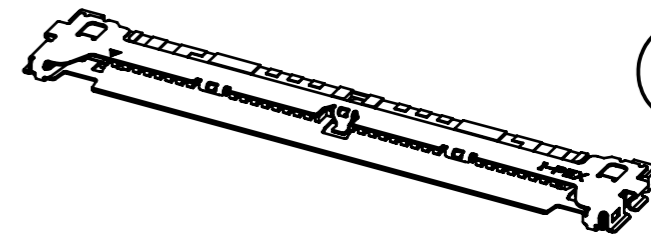


Recommended P/N 20729-0**E-02

PART NO.	Pos.	A	B	C	D	E	F	G	H	K
20729-030E-02	30	14.60	12.80	5.60	18.14	-	2.80	10.00	20.05	15.95
20729-040E-02	40	18.60	16.80	7.60	22.14	2.40	4.80	14.00	24.05	19.95



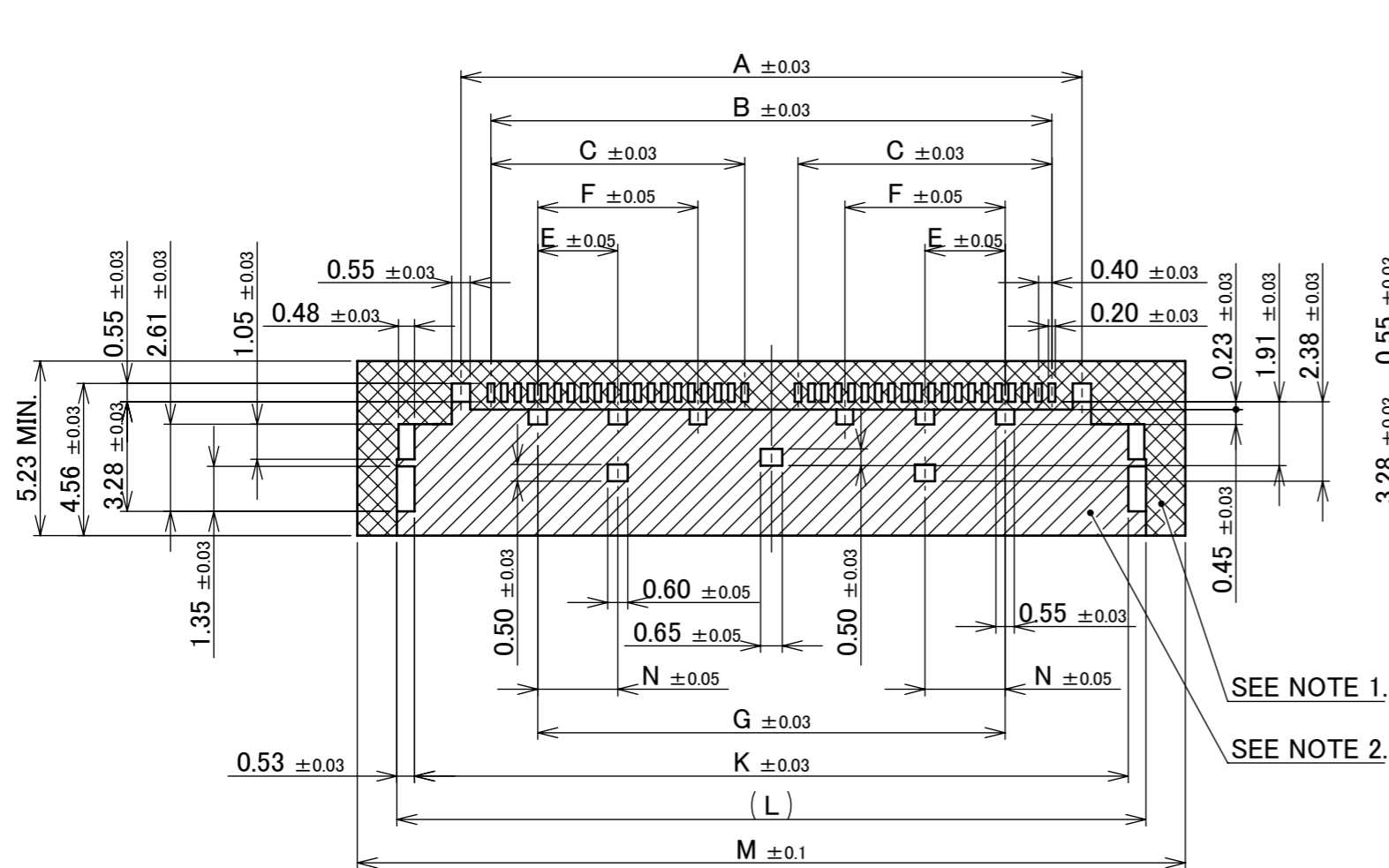
NO.	DISCRIPTION	MATERIAL	FINISH , REMARKS
3	SHELL	PHOSPHOR BRONZE	ALL OVER Ni 1.00 μ m MIN. SOLDERING AREA : Au 0.02 μ m MIN.
2	CONTACT	PHOSPHOR BRONZE	ALL OVER Ni 1.00 μ m MIN. CONTACT & SOLDERING AREA : Au 0.03 μ m MIN.
1	HOUSING	LCP	UL94V-0, BLACK, RED PHOSPHORUS FREE

REV.	ECN	BY	DATE	APP.	APP.	CHK.	DATE	PROJECTION	SERIES No.	TITLE	SCALE	SHEET	REV.
5	Z201253	S.Y	2020/12/07	Y.S	ANGLE	±2°	6 OVER 30 MAX.	±0.3		R4	5:1	1/5	5
4	Z200257	S.Y	2020/03/06	Y.S	6 MAX.	±0.2	30 OVER 120 MAX.	±0.5					
3	Z190170	S.Y	2019/02/08	Y.S	GENERAL TOLERANCE.			TITLE		CABLINER [®] -CAL RECEPTACLE ASS'Y	mm	I-PEX	
2	Z181287	M.I	2018/08/01	H.I	DWG.	DATE		M.Ishimaru 2017/04/12					
1	Z180190	M.I	2018/02/14	H.I	CHK.								
0	Z170418	M.I	2017/04/12		APP.								
REVISION RECORD					H.Ikari			DWG. No.	20729	SIZE	A3		

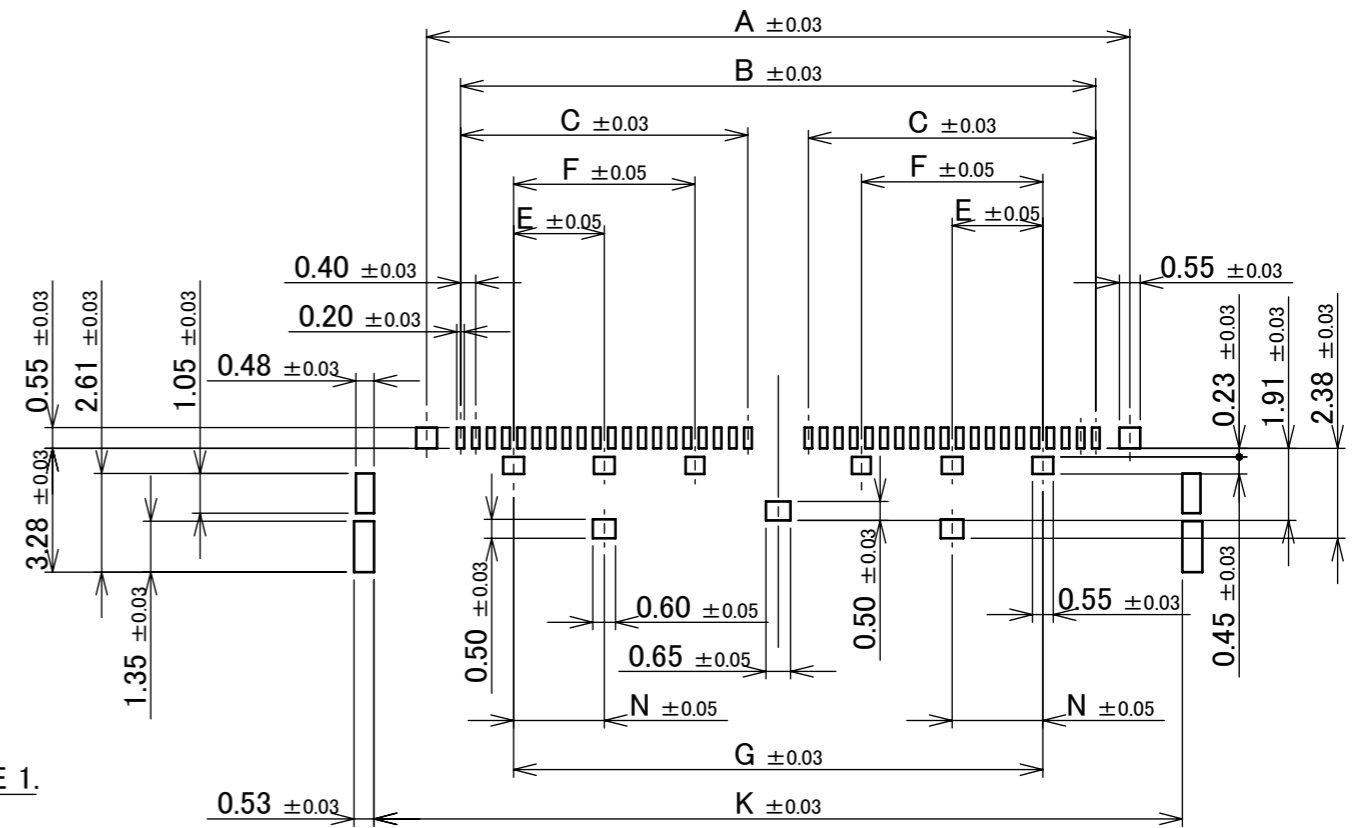
ITEMS	SPECIFICATION
APPLICABLE CABLE	MICRO COAX : AWG# 40,42,44 DISCRETE : AWG# 34,36
RATING VOLTAGE	100V AC (PER A CONTACT)
RATING AMPERAGE (FOR CONTACT)	0.10A AC/DC [AWG#44] 0.24A AC/DC [AWG#42] 0.30A AC/DC [AWG#40] 0.80A AC/DC [AWG#36] 1.00A AC/DC [AWG#34] ※ TESTING BY A REAL MACHINE IS RECOMMENDED BECAUSE TEMPERATURE RISE MAY AFFECTED BY ACTUAL SITUATION
OPERATING TEMPERATURE	233~358K(-40°C~+85°C)
OPERATING HUMIDITY	85% MAX.(NON-CONDENSING)
CONTACT RESISTANCE	INITIAL : 180mohm MAX.(AWG#34) / AFTER TEST : \triangle 40mohm MAX. 275mohm MAX.(AWG#36) 600mohm MAX.(AWG#40) 700mohm MAX.(AWG#42) 1080mohm MAX.(AWG#44)
GROUND SHELL RESISTANCE	INITIAL : 50mohm MAX. / AFTER TEST : \triangle 40mohm MAX.
INSULATION RESISTANCE	INITIAL : 1000Mohm MIN. / AFTER TEST : 500Mohm MIN.
DIELECTRIC WITHSTANDING VOLTAGE	AC250V 1min
DURABILITY	30 CYCLES
MATING FORCE (INITIAL / AFTER TEST)	30P : 12.0N MAX. 40P : 16.0N MAX.
UNMATING FORCE (INITIAL / AFTER TEST)	30P : 1.80N MIN. 40P : 2.40N MIN.
CABLE RETENTION FORCE	30P : 11.8N MIN. 40P : 12.4N MIN.
COPLANARITY	0.10 MAX.
PRODUCT SPECIFICATION	PRS-2371
TEST REPORT	TR-17036
PACKING STANDARD	PST-17058
INSTRUCTION MANUAL	HIM-17010
APPEARANCE CRITERIA No.	QLS-A***

ANGLE	$\pm 2^\circ$	6 OVER 30 MAX.	± 0.3	PROJECTION 	SERIES No. R4	CUSTOMER COPY			
	6 MAX.	± 0.2	30 OVER 120 MAX.			± 0.5			
GENERAL TOLERANCE.				TITLE CABLINER [®] -CAL RECEPTACLE ASS'Y	SCALE 	I-PEX			
DWG.	DATE					UNIT mm			
CHK.						SIZE A3	SHEET 2/5	REV. 5	
APP.						DWG. No. 20729			

PART NO.	Pos.	A	B	C	E	F	G	K	L	M	N
20729-030E-02	30	14.60	12.80	5.60	-	2.80	10.00	17.38	18.44	20.80	1.40
20729-040E-02	40	18.60	16.80	7.60	2.40	4.80	14.00	21.38	22.44	24.80	2.40



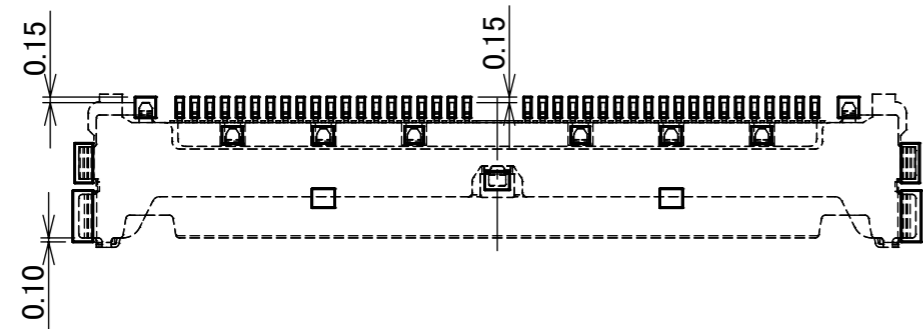
RECOMMENDED PCB LAYOUT



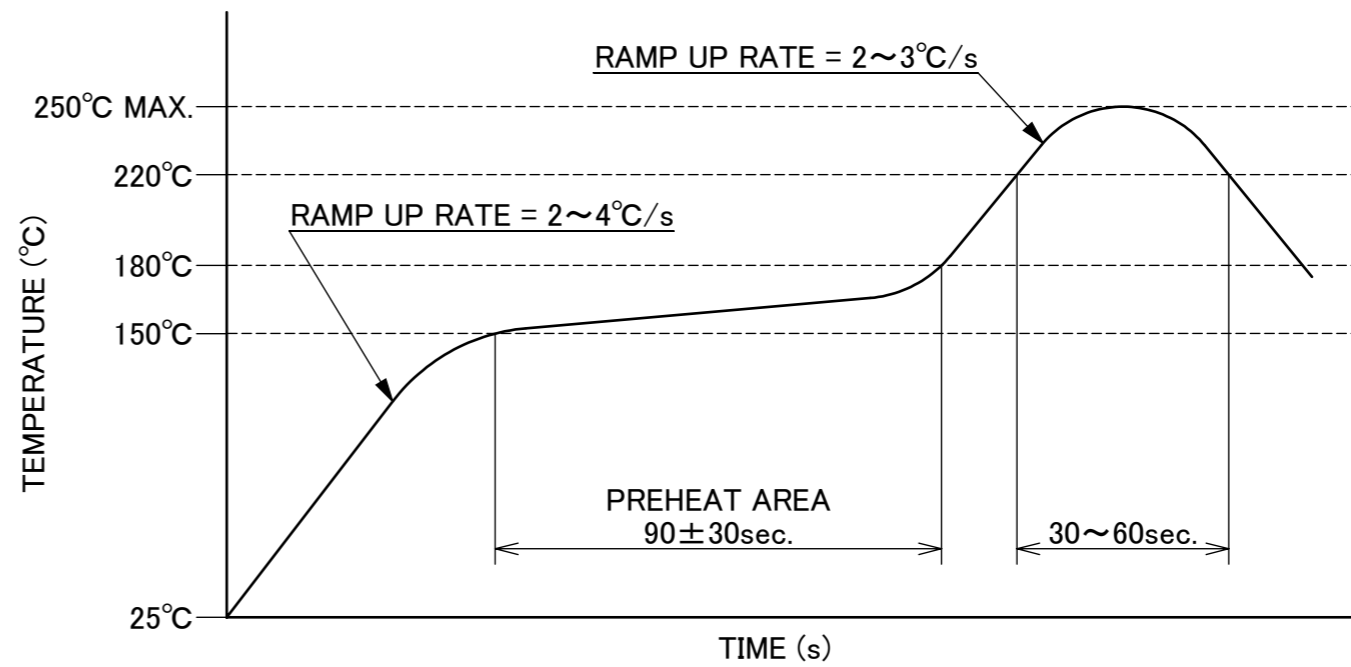
RECOMMENDED METAL MASK LAYOUT
METAL MASK THICKNESS : t=0.10 mm

- NOTES.
 1. THIS AREA CANNOT MOUNT ANOTHER COMPONENTS.
 2. SOLDER RESIST SHALL BE APPLIED TO PREVENT SHORT CIRCUITS WHEN PLACING SIGNAL LINES ON GROUND AREA.

ANGLE	±2°	6 OVER 30 MAX.	±0.3	PROJECTION	SERIES No.	CUSTOMER COPY	
6 MAX.	±0.2	30 OVER 120 MAX.	±0.5		R4		
GENERAL TOLERANCE.				TITLE	SCALE	I-PEX	
DWG.	DATE			CABLIN [®] -CAL RECEPTACLE ASS'Y	5:1		
CHK.					UNIT		
APP.					mm		
				DWG. No.	SIZE	SHEET	REV.
				20729	A3	3/5	5



CONNECTOR ON RECOMMENDED FOOTPRINT PATTERN

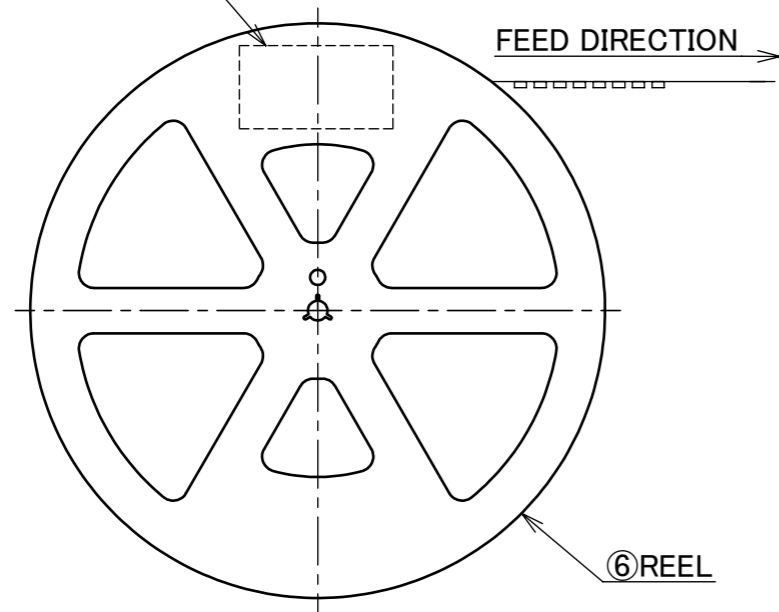


REFLOW TEMPERATURE PROFILE
 SENJU METAL INDUSTRY CO., LTD. : M705-SHF(Sn96.5 Ag3.0 Cu0.5)

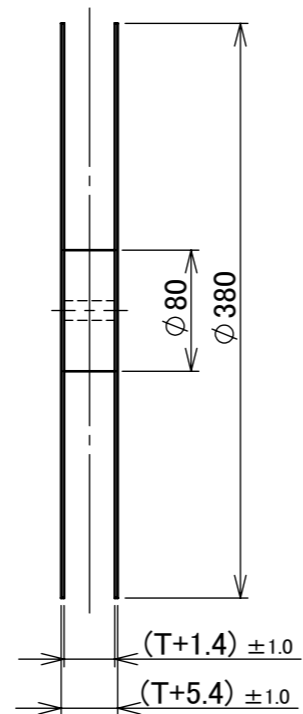
ANGLE	±2°	6 OVER 30 MAX.	±0.3	PROJECTION 	SERIES No. R4	CUSTOMER COPY			
6 MAX.	±0.2	30 OVER 120 MAX.	±0.5			SCALE 5:1	I-PEX		
GENERAL TOLERANCE.				TITLE	UNIT				
DWG.	DATE			CABLIN [®] -CAL RECEPTACLE ASS'Y	mm				
CHK.					SIZE	SHEET	REV.		
APP.					DWG. No.	A3	4/5	5	
				20729					

PART NO.	P	Q	R	S	T	W	QTY. PER EMBOSS REEL (PIECES / REEL)	QTY. PER PACKING CARTON (REELS / CARTON)
20729-030E-0#	15.00	18.54	14.20	28.40	32.00	25.50	6000/ REEL	4 / CARTON = 24000
20729-040E-0#	19.00	22.54	20.20	40.40	44.00	37.50		3 / CARTON = 18000

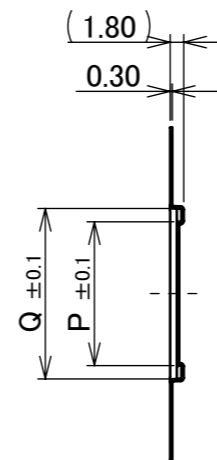
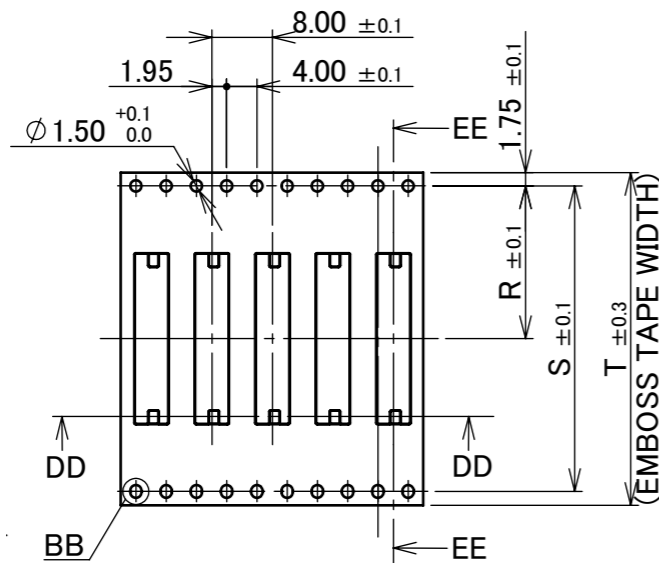
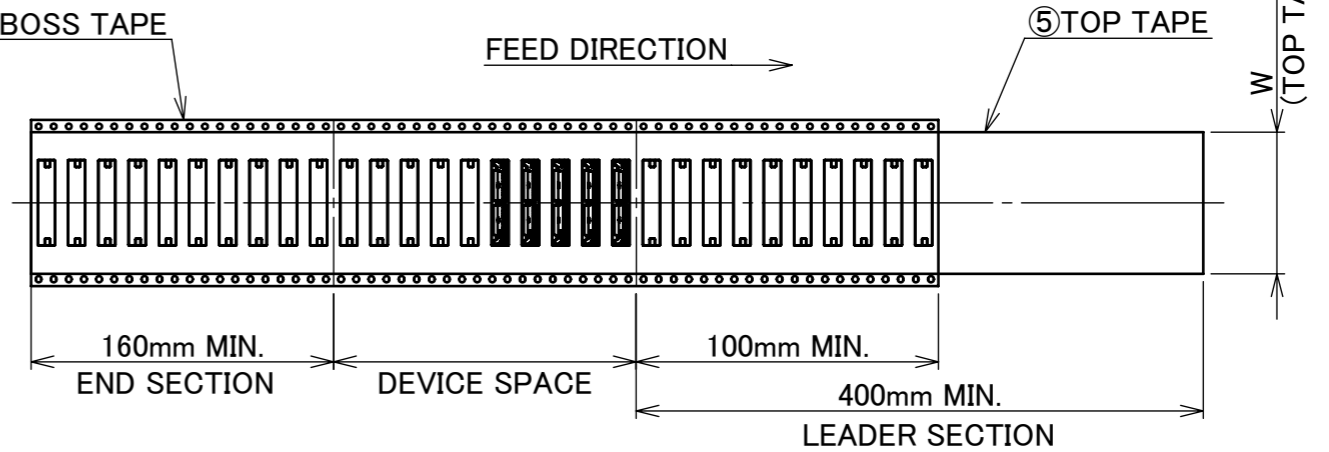
⑦PACKING LABEL



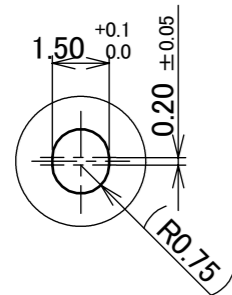
⑥REEL



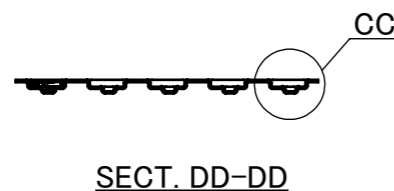
④EMBOSS TAPE



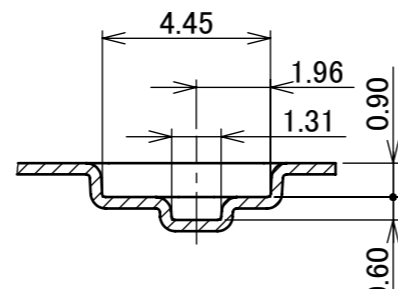
SECT. EE-EE



DETAIL BB
(S=10/1)



SECT. DD-DD



DETAIL CC
(S=5/1)

NOTES.

- TAPING SPECIFICATION FOLLOWS JIS C 0806 (IEC 60286-3).
- MAKE EMPTY SECTION OF LEADER AND END ON EACH END OF THE TAPE.
- TOP TAPE SHALL NOT STICK OUT FROM EMBOSS TAPE.
- TOP TAPE SHALL NOT COVER FEED HOLE.

NO.	DISCRIPTION	MATERIAL	FINISH , REMARKS
7	PACKING LABEL	-	-
6	REEL	PS	ANTI-STATIC TYPE BLACK
5	TOP TAPE	PET t=0.062 TRANSPARENCY	ANTI-STATIC TYPE
4	EMBOSS TAPE	PS t=0.3 TRANSPARENCY	ANTI-STATIC TYPE

ANGLE	$\pm 2^\circ$	6 OVER 30 MAX.	± 0.3	PROJECTION	SERIES No.	CUSTOMER COPY		
6 MAX.	± 0.2	30 OVER 120 MAX.	± 0.5		R4	TITLE		
GENERAL TOLERANCE.				TITLE		SCALE	I-PEX	
DWG.	DATE		CABLIN [®] -CAL RECEPTACLE ASS'Y		1:X			
CHK.					UNIT			
APP.			DWG. No.		mm	SIZE	SHEET	REV.
				20729		A3	5/5	5